

GENERAL NOTES:

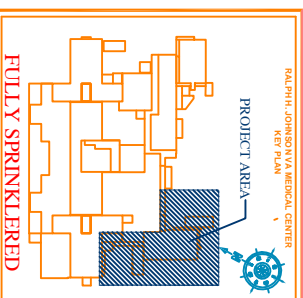
1. GALLIX AT JUNCTURE OF INTERIOR FACES OF DOOR FRAMES, VIEW WINDOW FRAMES, EXTERIOR WINDOW FRAMES, AND EXTERIOR WALLS SHALL BE CONSIDERED TOILET ACCESSORIES, TOILET ACCESSORIES, SURFACE MOUNTED TOILET ACCESSORIES, ETC. WITH ADJACENT MATERIALS TO BE REMOVED AND RECONSTRUCTED TO MATCH EXISTING MATERIALS.
2. ALL TOILETS, OFFICES AND EXAM ROOMS TO RECEIVE SOUND BAIT INSULATION AT WALLS TO HANDICAP ACCESSIBLE WALL MOUNTED SINKS AND LAVATORIES SHALL BE MOUNTED TO ALLOW 1'-3" CLEARANCE FROM THE FACE OF ADJACENT WALL, FROD EQUIPMENT, CASEWORK, TUBS, ETC.
3. ALL TOILETS, OFFICES AND EXAM ROOMS TO MAINTAIN A MIN. OF 18" CLEARANCE ON LATCH PUSH SIDE OF DOORS AS REQUIRED BY CODE.
4. PULL SIDE AND 12" CLEARANCE MIN. ON LATCH PUSH SIDE OF DOORS AS REQUIRED BY CODE.

KEY NOTES:

1. REMOVABLE GUARD RAILS. SEE DETAILS 5 & 6/4414.
2. ACCORDION WALL PARTITION DIVIDER. SEE DETAIL 22/4022.
3. ACCORDION TO PROVIDE ASSEMBLY TO HOUSE (4) MINIMUM ONE CYLINDER CONSTRUCTED OF LAMINATED GLASS WITH ADJACENT MATERIALS TO BE REMOVED AND RECONSTRUCTED TO MATCH EXISTING MATERIALS.
4. LOCATION OF DOOR LEVELER. COORDINATE LOCATION WITH VAMP PRIOR TO INSTALLATION.
5. LOCATION OF DOOR LEVELER. COORDINATE LOCATION WITH VAMP PRIOR TO INSTALLATION.
6. LOCATION OF DOOR LEVELER. COORDINATE LOCATION WITH VAMP PRIOR TO INSTALLATION.
7. EXISTING DOOR LEVELER. COORDINATE LOCATION WITH VAMP PRIOR TO INSTALLATION.
8. EXISTING DOOR LEVELER. COORDINATE LOCATION WITH VAMP PRIOR TO INSTALLATION.
9. EXISTING DOOR LEVELER. COORDINATE LOCATION WITH VAMP PRIOR TO INSTALLATION.
10. EXISTING DOOR LEVELER. COORDINATE LOCATION WITH VAMP PRIOR TO INSTALLATION.

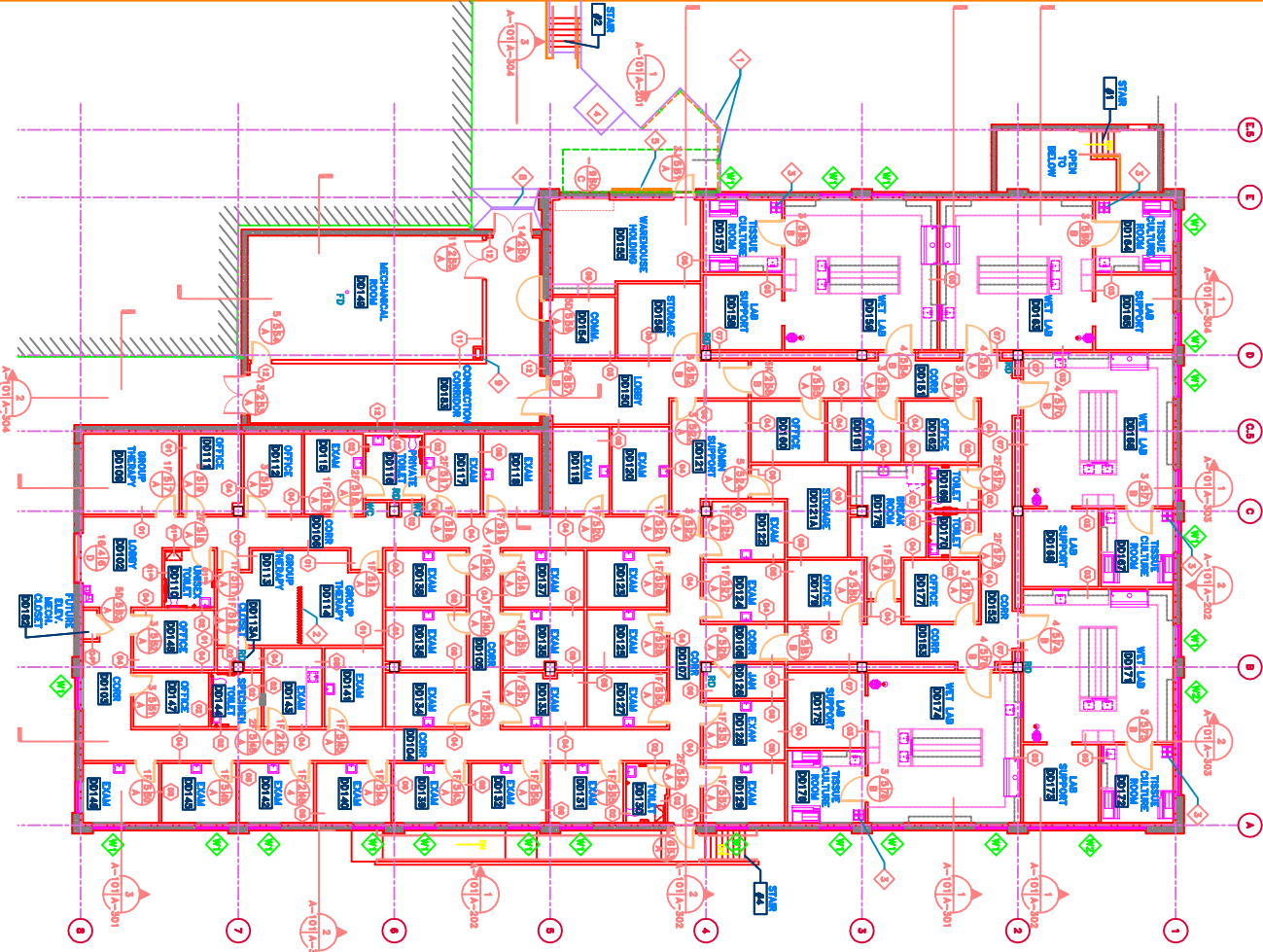
LEGEND:

- WALL TYPE - SEE SHEET A-002
- WINDOW TYPE - SEE SHEET A-002
- DOOR TYPE - SEE SHEET A-001
- WHEEL CHAIR STORAGE



0 4' 8' 16'
SCALE: 1/8" = 1'

1 FLOOR PLAN
SCALE: 1/8" = 1'-0"



Revision	DATE	BY
CONTRACT VISION-11-3-2012	09/28/12	

Architect/Engineer Address	Architect/Engineer Firm	Architect/Engineer State	Architect/Engineer Address
LINDBERGH & ASSOCIATES, LLC 3700 Ashland Boulevard, Suite 500 Charleston, South Carolina 29406 Phone: (843)353-6070 Fax: (843)353-0755	First Steel	South Carolina	

Project Title	Project Number	Project Name	Project Address
FIRST FLOOR PLAN	PTSD MENTAL HEALTH RESEARCH ADDITION	534-320	A-101
Approved: Services Director	Building Number	Building Name	Building Address
	1	PTSD MENTAL HEALTH RESEARCH ADDITION	534-320
			A-101
			Aug. 17 OF 2015

Department of Veterans Affairs