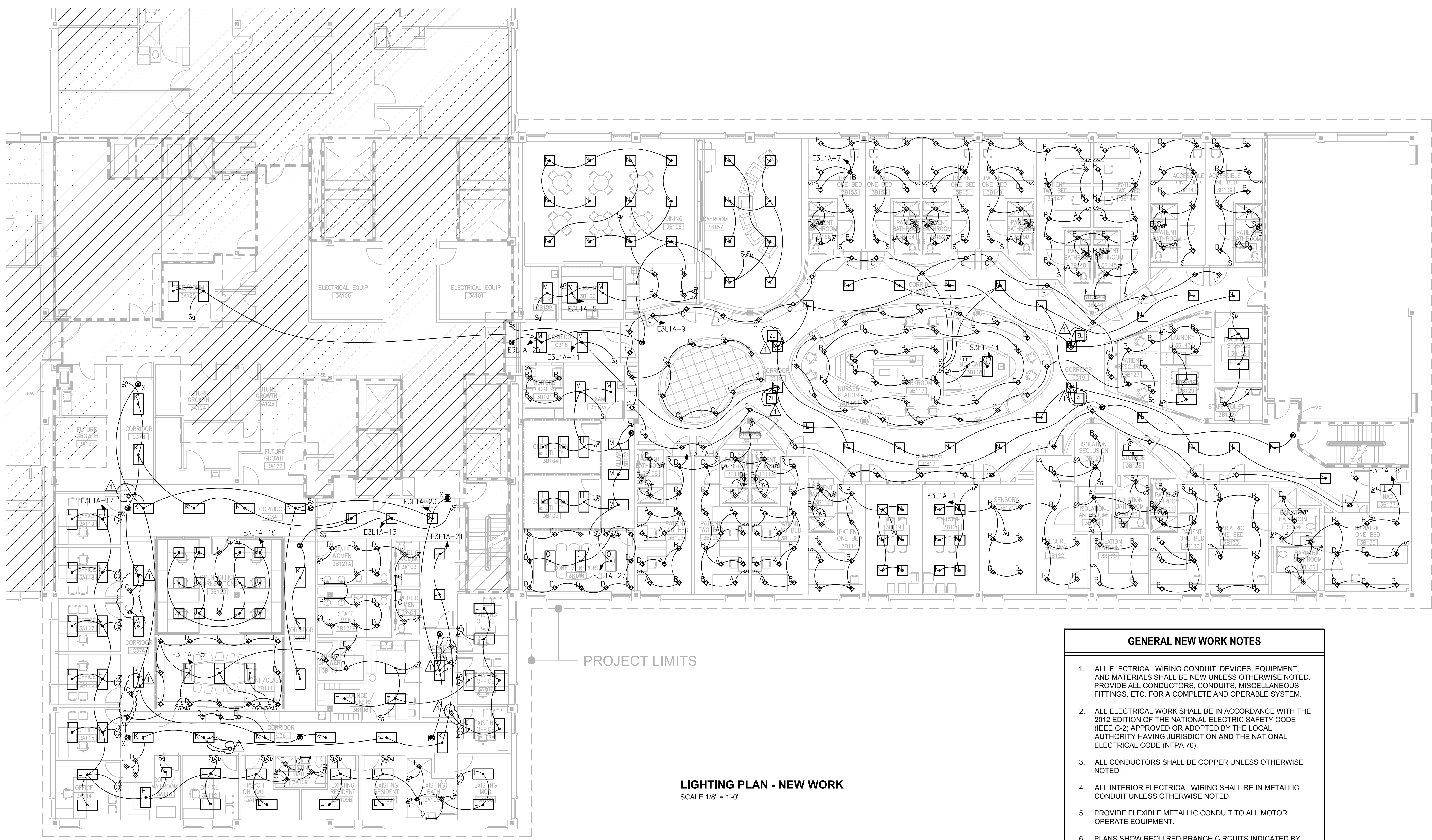


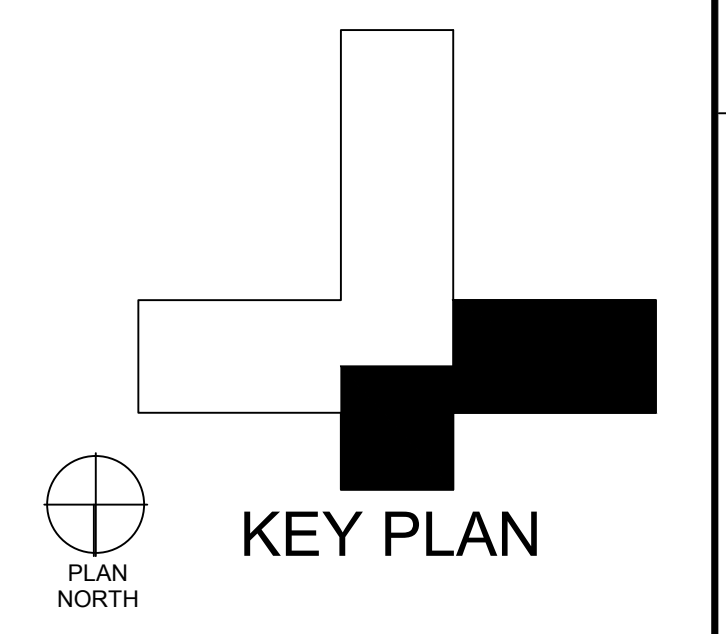
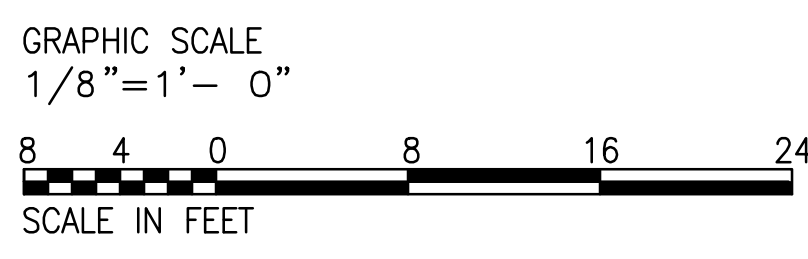
three inches = one foot
one and one half inches = one foot
one inch = one foot
three quarters inch = one foot
one half inch = one foot
three eighths inch = one foot
one quarter inch = one foot
one eighth inch = one foot



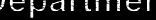

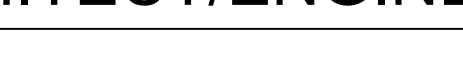
PROJECT LIMITS

LIGHTING PLAN - NEW WORK
SCALE 1/8" = 1'-0"

- GENERAL NEW WORK NOTES**
1. ALL ELECTRICAL WIRING CONDUIT, DEVICES, EQUIPMENT, AND MATERIALS SHALL BE NEW UNLESS OTHERWISE NOTED. PROVIDE ALL CONDUCTORS, CONDUITS, MISCELLANEOUS FITTINGS, ETC. FOR A COMPLETE AND OPERABLE SYSTEM.
 2. ALL ELECTRICAL WORK SHALL BE IN ACCORDANCE WITH THE 2012 EDITION OF THE NATIONAL ELECTRIC SAFETY CODE (IEEE C-2) APPROVED OR ADOPTED BY THE LOCAL AUTHORITY HAVING JURISDICTION AND THE NATIONAL ELECTRICAL CODE (NFPA 70).
 3. ALL CONDUCTORS SHALL BE COPPER UNLESS OTHERWISE NOTED.
 4. ALL INTERIOR ELECTRICAL WIRING SHALL BE IN METALLIC CONDUIT UNLESS OTHERWISE NOTED.
 5. PROVIDE FLEXIBLE METALLIC CONDUIT TO ALL MOTOR OPERATE EQUIPMENT.
 6. PLANS SHOW REQUIRED BRANCH CIRCUITS INDICATED BY CIRCUIT NUMBER, HOMERUNS SHOWN ARE SCHEMATIC. HOMERUNS MAY ORIGINATE FROM DIFFERENT LOCATIONS. ALL WIRES INCLUDING HOMERUNS SHALL BE DELINEATED ON RECORD DRAWINGS.
 7. COORDINATE WITH ALL TRADES AND EXISTING CONDITIONS PRIOR TO CONSTRUCTION.
 8. ALL EXIT LIGHTING SHALL BE PROVIDED WITH UNSWITCHED POWER.



**CONSTRUCTION DOCUMENT SUBMISSION
FULLY SPRINKLERED**

		CONSULTANTS:				ARCHITECT/ENGINEERS:		<div>Drawing Title LIGHTING PLAN</div> <div>Approved: Project Director</div>		<div>Project Title INPATIENT PSYCHIATRY AND SUBSTANCE ABUSE</div> <div>Location W.J. BRYAN DORN VAMC; COLUMBIA, SC</div> <div><div>Date 05/15/2014</div><div>Checked RLB</div><div>Drawn DLA</div></div> <div>Drawing Number EL101 <div>Dwg. 41 of 51</div></div>		<div>OFFICE OF CONSTRUCTION AND FACILITIES MANAGEMENT</div> <div> Department of Veterans Affairs</div>
						 <div>BES DESIGN/BUILD BES DESIGN/BUILD, LLC 766 Middle St, Fairhope, AL 36532 Phone: 251.990.5778 Fax: 251.990.3716</div>						
1. ADD ZL AND DOME LIGHTING. Revisions:		06/04/14 Date										