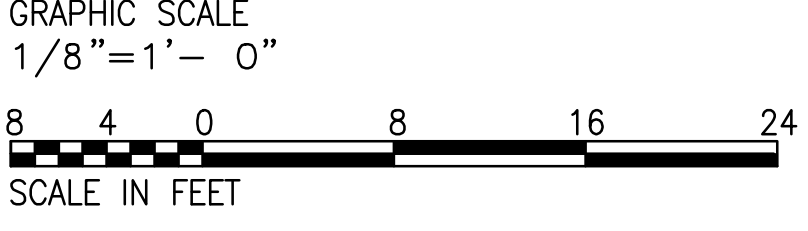
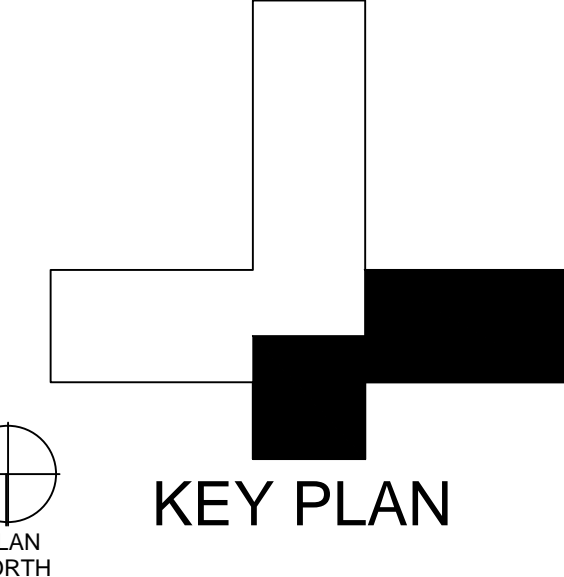


three inches = one foot
one and one half inches = one foot
one inch = one foot
three quarters inch = one foot
one half inch = one foot
three eighths inch = one foot
one quarter inch = one foot
one eighth inch = one foot

SECONDARY SYSTEMS PLAN - NEW WORK
SCALE 1/8" = 1'-0"

- GENERAL NEW WORK NOTES**
- ALL ELECTRICAL WIRING CONDUIT, DEVICES, EQUIPMENT, AND MATERIALS SHALL BE NEW UNLESS OTHERWISE NOTED. PROVIDE ALL CONDUCTORS, CONDUITS, MISCELLANEOUS FITTINGS, ETC. FOR A COMPLETE AND OPERABLE SYSTEM.
 - ALL ELECTRICAL WORK SHALL BE IN ACCORDANCE WITH THE 2012 EDITION OF THE NATIONAL ELECTRIC SAFETY CODE (IEEE C-2) APPROVED OR ADOPTED BY THE LOCAL AUTHORITY HAVING JURISDICTION AND THE NATIONAL ELECTRICAL CODE (NFPA 70).
 - ALL CONDUCTORS SHALL BE COPPER UNLESS OTHERWISE NOTED.
 - ALL INTERIOR ELECTRICAL WIRING SHALL BE IN METALLIC CONDUIT UNLESS OTHERWISE NOTED.
 - PROVIDE FLEXIBLE METALLIC CONDUIT TO ALL MOTOR OPERATE EQUIPMENT.

- NEW WORK NOTES**
- PROVIDE CONTROL BOX FOR ACCESS CONTROL. SEE ACCESS CONTROL DETAILS ON DRAWING NUMBER ET101.
 - PROVIDE (6"x6") JUNCTION BOX UNDER COUNTER FOR NURSE CALL.
 - A NEW STAFF TERMINAL (ST) WILL BE INSTALLED AT THE POLICE DESK LOCATED IN B100 IN ROOM 1C156.



**CONSTRUCTION DOCUMENT SUBMISSION
FULLY SPRINKLERED**

CONSULTANTS:		ARCHITECT/ENGINEERS:		Drawing Title SECONDARY SYSTEMS PLAN	Project Title INPATIENT PSYCHIATRY AND SUBSTANCE ABUSE		Project Number 544-13-101	OFFICE OF CONSTRUCTION AND FACILITIES MANAGEMENT Department of Veterans Affairs
				Approved: Project Director	Location W.J. BRYAN DORN VAMC; COLUMBIA, SC		Building Number 100	
1. ADD NURSE CALL BUTTONS & JUNCTION BOXES					Date 05/15/2014	Checked RLB	Drawing Number EY101	
Revisions:					Drawn DLA		Dwg. 43 of 51	