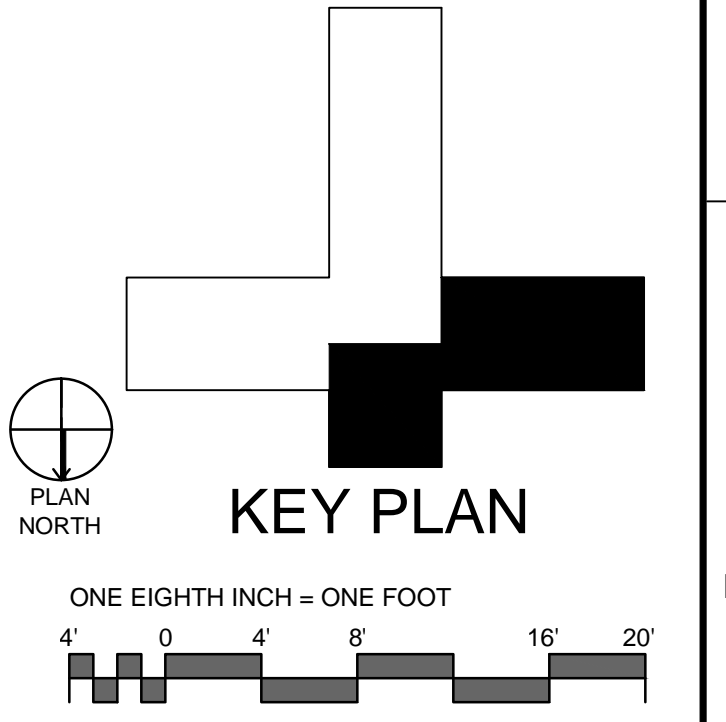


1 FINISH PLAN - NORTH AND WEST WING
1/8"=1'-0"

- NOTES**
1. REFER TO SHEET AE602 FOR TRANSITION DETAILS.
 2. REFER TO SHEET AE603 FOR CORNER GUARD AND WALL GUARD DETAILS.
 3. REFER TO IN102 FOR FINISH SCHEDULE.
 4. REFER TO QH101 FOR EQUIPMENT/FURNITURE SCHEDULE PLANS.
 5. (7) INDICATES SIGNAGE. REFER TO IN102 FOR SIGNAGE SCHEDULE AND MOUNTING HEIGHTS.

WALL LEGEND	
LINETYPE	DESCRIPTION
[Solid Line]	EXISTING WALL TO REMAIN
[Dashed Line]	EXISTING WALL TO BE REMOVED
[Dotted Line]	EXISTING / NEW FIRE WALL-1HR
[Dash-dot Line]	EXISTING / NEW FIRE WALL-2HR
[Thick Solid Line]	EXISTING / NEW 1 HR SMOKE/FIRE WALL
[Thick Dotted Line]	EXISTING / NEW 2 HR SMOKE/FIRE WALL
[Thick Dash-dot Line]	EXISTING / NEW HAZARDOUS ROOM



ADDENDUM NO. 1	06-04-14	CONSULTANTS:	ARCHITECT/ENGINEERS:	Drawing Title FINISH PLAN - NORTH AND WEST WING	Project Title INPATIENT PSYCHIATRY AND SUBSTANCE ABUSE	Project Number 544-13-101
				Approved: Project Director	Location W.J. BRYAN DORN VAMC; COLUMBIA, SC	Building Number 100
					Date 05-15-2014	Drawing Number IN101
					Checked DCVT	Dwg. 17 of 51
					Drawn ROW	

BES DESIGN/BUILD

BES DESIGN/BUILD, LLC
766 Middle St, Fairhope, AL 36532
Phone: 251.990.5778
Fax: 251.990.3716

OFFICE OF CONSTRUCTION AND FACILITIES MANAGEMENT

Department of Veterans Affairs