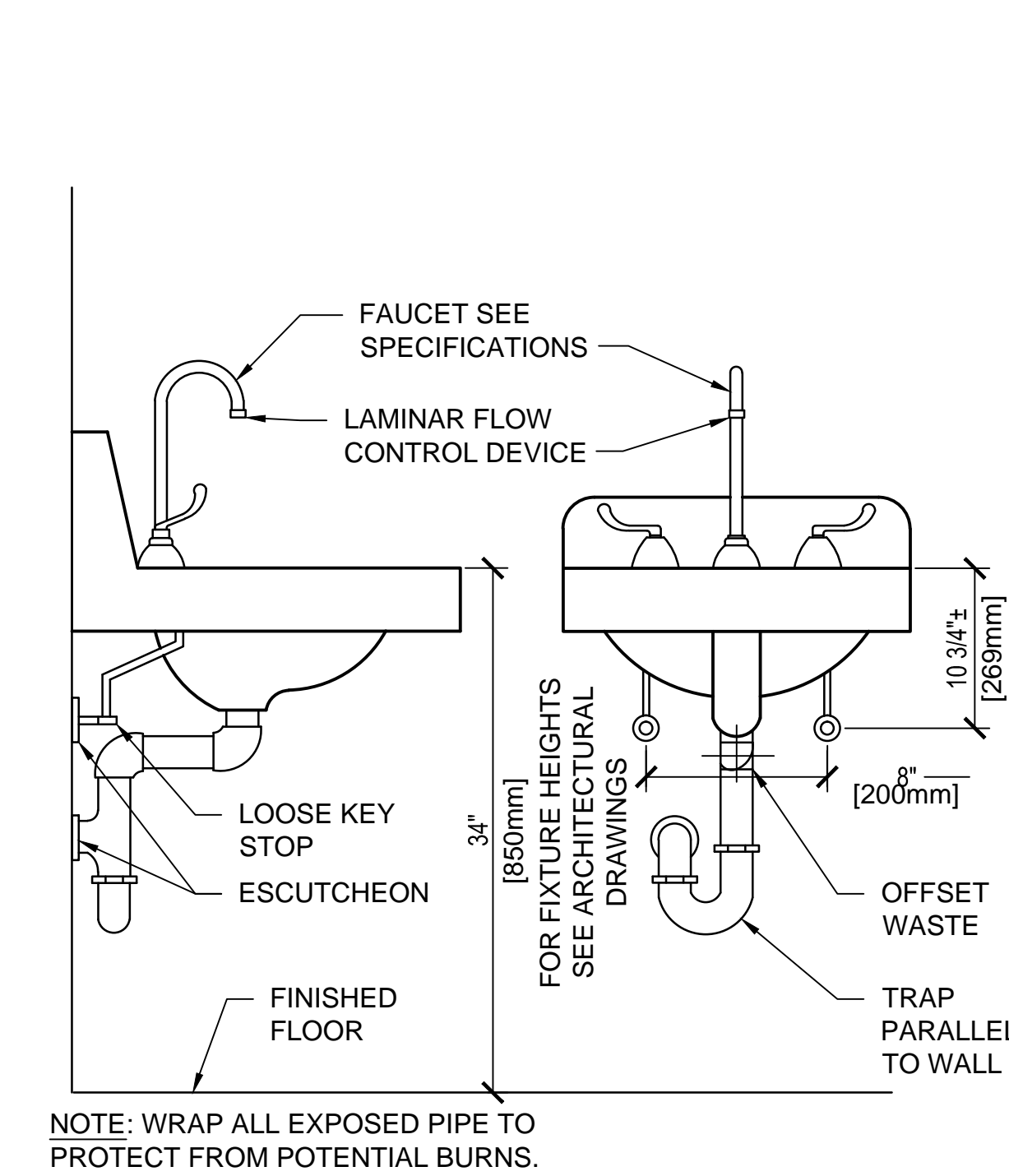
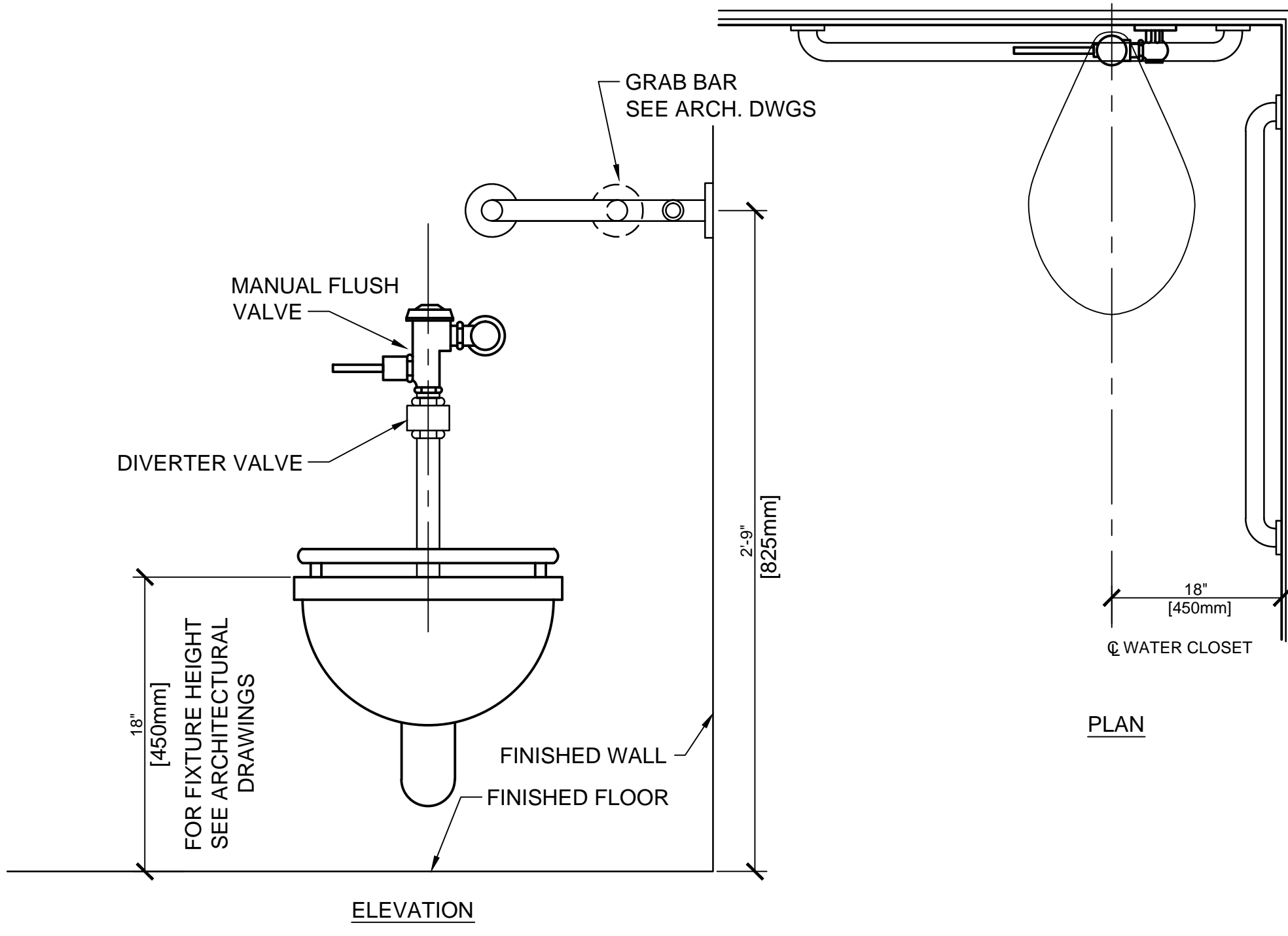


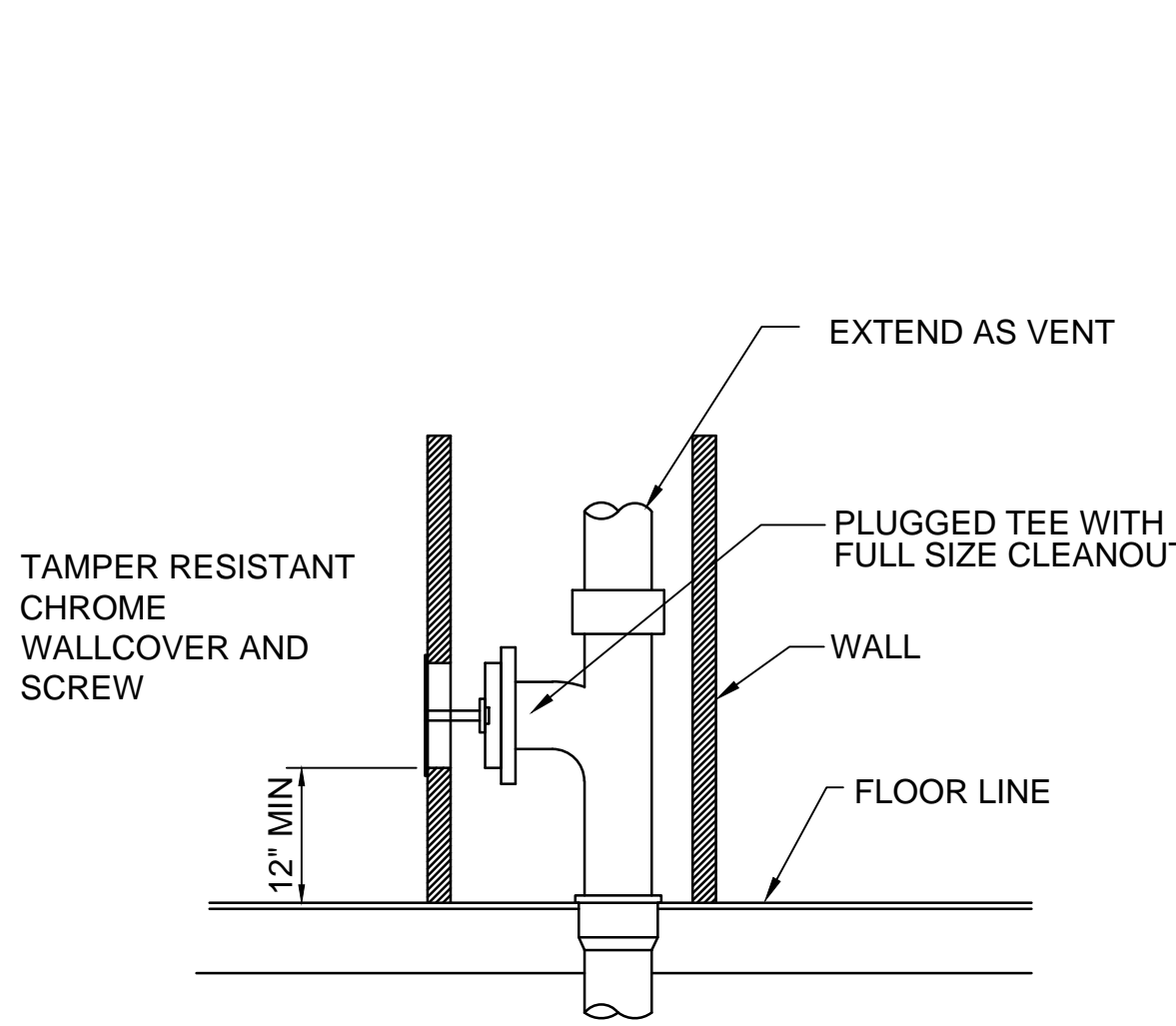
three inches = one foot
one and one half inches = one foot
one inch = one foot
one inch = one foot
three quarters inch = one foot
three eighths inch = one foot
one half inch = one foot
one quarter inch = one foot
one eighth inch = one foot
one eighth inch = one foot



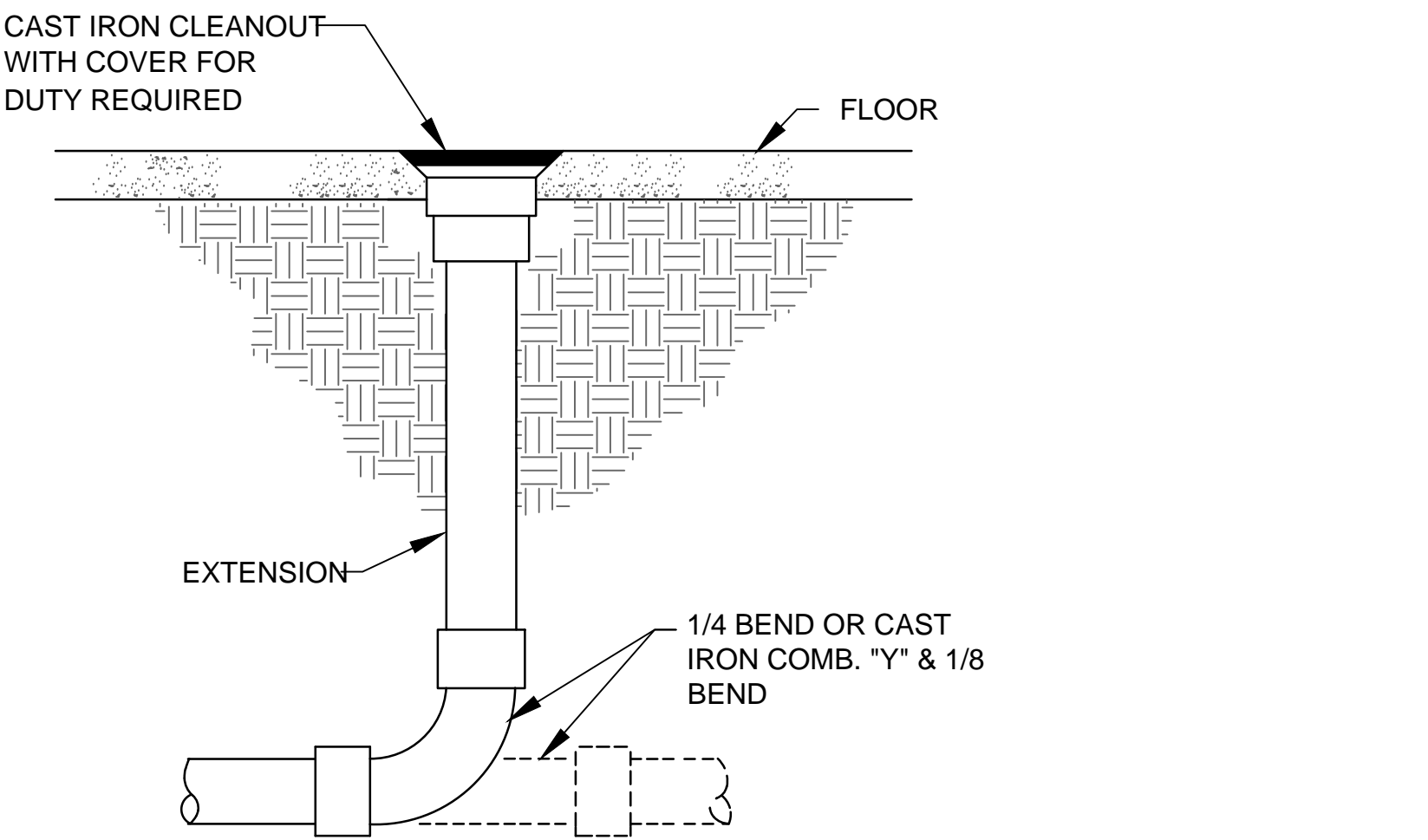
1 TYPICAL WALL HUNG LAVATORY DETAIL (P-414)
NTS
NOTE: DETAIL APPLIES TO PUBLIC OR STAFF ROOMS ONLY AND NOT PATIENT ROOMS



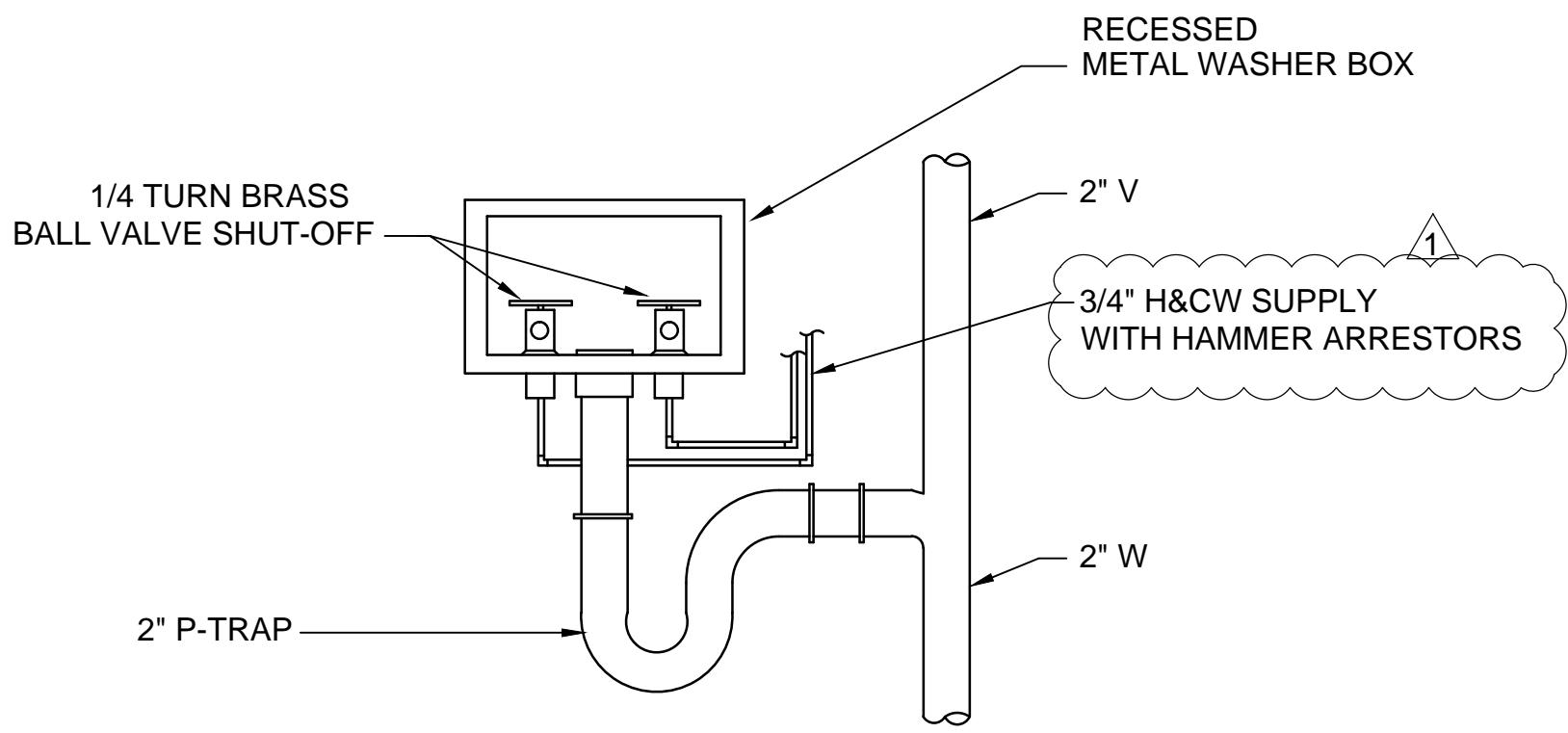
2 TYPICAL WATER CLOSET DETAIL (P-103)
NTS
NOTE: DETAIL APPLIES TO PUBLIC OR STAFF ROOMS ONLY AND NOT PATIENT ROOMS



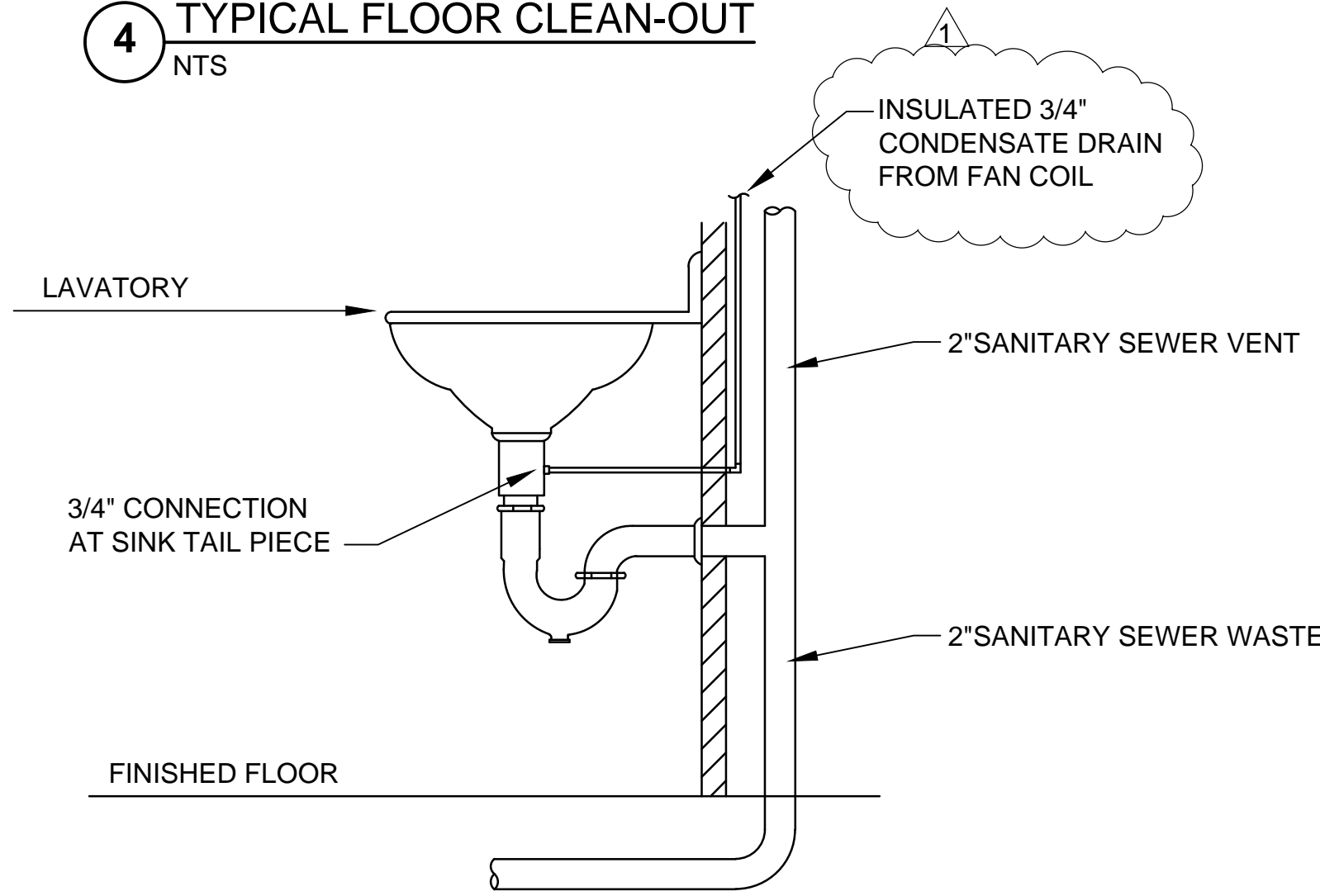
3 TYPICAL WALL CLEAN-OUT
NTS



4 TYPICAL FLOOR CLEAN-OUT
NTS



5 TYPICAL WASHER BOX
NTS
NOTE: MOUNT WASHER BOX 40" AFF +/-



6 FAN COIL COND. DRAIN CONNECTION
NTS

PLUMBING FIXTURE SCHEDULE						
ITEM	DESCRIPTION (LOCATION)	CW	HW	WASTE	VENT	REMARKS (SEE NOTE 1)
P-103	WATER CLOSET (STAFF & GEN. PUBLIC)	1 1/4"	-	4"	2"	ADA COMPLIANT, WHITE, WALL HUNG, VITREOUS CHINA, REAR OUTLET, TOP SPUD, ZURN #Z5615. PROVIDE WITH HINGED OPEN FRONT SEAT ZURN #Z5955-EL AND MANUAL PISTON OPERATED FLUSH VALVE, ZURN 6200-HET, FIXTURE CARRIER.
P-108*	WATER CLOSET (TYPICAL PATIENT ROOM)	1 1/4"	-	4"	2"	ADA COMPLIANT, WHITE, VITREOUS CHINA, FLOOR MOUNT, REAR OUTLET, ELONGATED OPEN FRONT SEAT, 1.28 GPF, ZURN #Z5647, WITH CONCEALED PUSH BUTTON FLUSH VALVE, FIXTURE CARRIER.
P-109*	WATER CLOSET (ISOLATION PATIENT ROOM)	1 1/4"	-	4"	2"	ADA COMPLIANT, FLOOR MOUNT, BLOW-OUT JET, ELONGATED BOWL, WHITE POWDER COATING, 1.28 GPF, ACORN #1685-W, ANTI-SUICIDE SKIRT, CONCEALED PUSHBUTTON FLUSH VALVE, FIXTURE CARRIER. HINGED OPEN FRONT SEAT, CONCEALED PIPING INSTALLATION. (SEE NOTE 3)
P-114	WATER CLOSET (BARIATRIC PATIENT ROOM)	1 1/2"	-	4"	2"	ADA COMPLIANT, FULLY ENCLOSED FLOOR MOUNTED, SIPHON JET, 14 GA. 304 SAN, WHITE POWDER COATING, HINGED OPEN FRONT SEAT, CONCEALED PUSHBUTTON FLUSH VALVE, 1.6 GPF, WHITEHALL #2125-A, FIXTURE CARRIER, CONCEALED PIPING INSTALLATION. (SEE NOTE 3)
P-201	URINAL (STAFF & GEN. PUBLIC)	3/4"	-	2"	1 1/2"	ADA COMPLIANT, WHITE, 0.5 GPF, ZURN Z5750, FIXTURE CARRIER. MANUAL PISTON FLUSH VALVE, 3/4" TOP SPUD, ZURN #6203
P-401	LAVATORY	1/2"	1/2"	1 1/2"	1 1/2"	ADA COMPLIANT, WALL HUNG, STRAIGHT BACK, VITREOUS CHINA, 4" CENTERS ZURN #5310, WITH CENTERSET FAUCET SINGLE HANDLE, GRID STRAINER, CERAMIC CARTRIDGE, ZURN #Z7440-XL, POINT-OF-USE THERMOSTATIC MIXING VALVE, LEONARD #170, FLOOR MOUNTED FIXTURE CARRIER.
P-414	LAVATORY	1/2"	1/2"	1 1/2"	1 1/2"	ADA COMPLIANT, LAVATORY, WALL HUNG, STRAIGHT BACK, VITREOUS CHINA, 8" CENTERS ZURN #5310, WITH GOOSENECK FAUCET & WRIST BLADE HANDLES ZURN #Z83184-XL, GRID STRAINER, POINT-OF-USE THERMOSTATIC MIXING VALVE, LEONARD #170. FLOOR MOUNTED FIXTURE CARRIER.
P-418	LAVATORY	1/2"	1/2"	1 1/2"	1 1/2"	ADA COMPLIANT, LAVATORY, WALL HUNG, STRAIGHT BACK, VITREOUS CHINA, 4" CENTERS ZURN #Z5314, WITH SENSOR FAUCET, HARD WIRED, 0.5 GPM, ZURN #Z6915-CWB-F, GRID STRAINER, FLOOR MOUNTED FIXTURE CARRIER, POINT-OF-USE THERMOSTATIC MIXING VALVE, LEONARD #170.
P-421*	LAVATORY (TYPICAL PATIENT ROOM)	1/2"	1/2"	1 1/2"	1 1/2"	ADA COMPLIANT, WALL HUNG, SOLID SURFACE COUNTER WITH INTEGRAL INFRARED SPRAY HEAD, HARD WIRED, 0.5 GPM, BRADLEY #HSL1, THERMOSTATIC MIXING VALVE. VANDAL PROOF GRID STRAINER, FLOOR MOUNTED FIXTURE CARRIER, CONCEALED PIPING INSTALLATION. (SEE NOTE 4)
P-422*	LAVATORY, OVAL COUNTERTOP	1/2"	1/2"	1 1/2"	1 1/2"	ADA COMPLIANT, OVAL COUNTERTOP, VITREOUS CHINA, 4" CENTERS ZURN #Z5110, WITH CENTERSET FAUCET SINGLE HANDLE, ZURN #Z7440-XL, POINT-OF-USE THERMOSTATIC MIXING VALVE, LEONARD #170. GRID STRAINER.
P-502	SERVICE SINK	1"	1"	3"	1 1/2"	TERRAZZO TOP, CORNER TYPE 28"x28"x12", STERN WILLIAMS #CRS-2200. VACUUM BREAKER WITH BRASS SERVICE SINK FAUCET, ZURN #Z14996-SF
P-524	SINK	1/2"	1/2"	1 1/2"	1 1/2"	ADA COMPLIANT, DOUBLE BOWL, 33"x22"x7-1/2" DEEP, STAINLESS STEEL, SELF-RIMMING, ELKAY #LRAD3321 WITH SWIVEL SPOUT FAUCET & SPRAY HOSE, BASKET STRAINER, ELKAY #LK406 W/ SPOUT-8. POINT-OF-USE THERMOSTATIC MIXING VALVE, LEONARD #170.
P-528	SINK	1/2"	1/2"	1 1/2"	1 1/2"	ADA COMPLIANT, SINGLE BOWL, STAINLESS STEEL, SELF-RIMMING, 22"x22"x6-1/2" DEEP BOWL, BASKET STRAINER, ELKAY #LRAD2222 WITH GOOSENECK FAUCET & 4" WRIST BLADE HANDLES, ELKAY #LK406 W/ SPOUT-8. POINT-OF-USE THERMOSTATIC MIXING VALVE, LEONARD #170.
P-530	SINK	1/2"	1/2"	1 1/2"	1 1/2"	ADA COMPLIANT, SINGLE BOWL, STAINLESS STEEL, SELF-RIMMING, 22"x22"x6-1/2" DEEP BOWL, GRID STRAINER, ELKAY #LRAD2222 WITH GOOSENECK FAUCET & ELECTRONIC SENSOR OPERATED FAUCET, ZURN#Z6920-XL WITH 8" GOOSENECK SPOUT, 1.0 GPM LAMINAR FLOW. POINT-OF-USE THERMOSTATIC MIXING VALVE, LEONARD #170.
P-604	ELECTRIC WATER COOLER	1/2"	-	1 1/2"	1 1/2"	ADA COMPLIANT, WALL-HUNG, SELF-CONTAINED, 8 GPH, PUSH BAR OPERATED, ANTI-SPLASH DESIGN, S.STL. COOLER TOP, HALSEY-TAYLOR #HAC8FS-Q
P-702	SHOWER (TYPICAL PATIENT ROOM)	1/2"	1/2"	2"	1 1/2"	ADA COMPLIANT, CHROME PLATED BRASS CONSTRUCTION, THERMOSTATIC AND PRESSURE BALANCING VALVE, 2.0 GPM, LIGATURE RESISTANT SHOWER HEAD WITH CONCEALED WATER SUPPLY. WHITEHALL #1741-FH-CSH-SRCH SEE NOTE 5. TERRAZO SHOWER PAN STERN WILLIAMS WH-SERIES.
P-703	SHOWER (STAFF SHOWER ROOM)	1/2"	1/2"	2"	1 1/2"	ADA COMPLIANT, SINGLE HANDLE SHOWER, WALL MOUNTED, 2.0 GPM, CHROME PLATED FINISH, WITH THERMOSTATIC AND PRESSURE BALANCING VALVE, DIVERTER VALVE, HAND-HELD SHOWER HEAD WITH GLIDE BAR, ADJUSTABLE SHOWER HEAD WITH SWING ARM, SPEAKMAN #SM-5060. TERRAZZO SHOWER PAN STERN WILLIAMS WH-SERIES.
P-808	WASHING MACHINE BOX	3/4"	3/4"	2"	2"	20 GAUGE STEEL BOX WITH CORROSION RESISTANT EPOXY COATING, 1/4 TURN BRASS BALL VALVES OATEY METAL WASHER BOX #38981
P-900*	ICE MAKER BOX	1/2"	-	-	-	20 GAUGE STEEL BOX WITH CORROSION RESISTANT EPOXY COATING, 1/4 TURN BRASS BALL VALVE OATEY METAL ICEMAKER BOX #38689

NOTES:
1. BASIS OF DESIGN IS NOT INTENDED TO LIMIT EQUIPMENT SELECTION. PROVIDE INDICATED EQUIPMENT OR EQUIPMENT OF EQUAL PERFORMANCE AND QUALITY.
2. PROVIDE PIPE PROTECTION AT ALL LAVATORY HW/CW PIPING, DRAINS & TRAPS FOR ADA COMPLIANCE.
3. PROVIDE PATIENT ROOM WATER CLOSETS WITH CONCEALED MANUAL PUSHBUTTON FLUSH VALVES WITH AN ELECTRONIC CONTROLLER TO FLUSH VALVE WIRED TO THE NURSE'S STATION FOR REMOTE CONTROL AND MONITORING. PROVIDE WATER CLOSET WITH CONCEALED REAR WATER PIPING CONNECTION.
4. PROVIDE PATIENT ROOM LAVATORIES WITH ELECTRONIC SOLENOID CONTROL VALVE WIRED TO THE NURSE'S STATION FOR REMOTE CONTROL AND MONITORING. PROVIDE LAVATORY WITH CONCEALED WATER SUPPLY AND DRAIN PIPING CONNECTIONS.
5. PROVIDE PATIENT ROOM SHOWERS WITH ELECTRONIC SOLENOID CONTROL VALVE WIRED TO THE NURSE'S STATION FOR REMOTE CONTROL AND MONITORING.
6. PROVIDE LAVATORY, HAND SINK, AND SHOWER FAUCET SETS WITH POINT-OFUSE THERMOSTATIC MIXING VALVE CONTROL FOR HW SUPPLY.

MISCELLANEOUS EQUIPMENT:
WATER HAMMER ARRESTORS: PERMANENTLY SEALED MECHANICAL DEVICE, PRE-CHARGED, THREADED CONNECTION. ASSE 1010 - 2004 CERTIFIED. INSTALL AS CLOSE AS POSSIBLE TO QUICK-CLOSING VALVE. NO ACCESS PANEL REQUIRED. PISTON-TYPE: HARD DRAWN SEALED COPPER BODY WITH PLASTIC RINGS AND PISTON, THREADED ADAPTER: SIOUX CHIEF 650 SERIES OR EQUAL.
*NON-STANDARD ITEM NUMBER.
**ALL GANG PLUMBING, RESTROOM AREAS WILL REQUIRE WATER HAMMER ARRESTORS, NOT EXAM ROOM SINKS.

CONSTRUCTION DOCUMENT SUBMISSION
FULLY SPRINKLERED

CONSULTANTS:		ARCHITECT/ENGINEERS:		Drawing Title PLUMBING SCHEDULE AND DETAILS	Project Title INPATIENT PSYCHIATRY AND SUBSTANCE ABUSE	Project Number 544-13-101	OFFICE OF CONSTRUCTION AND FACILITIES MANAGEMENT Department of Veterans Affairs
				Approved: Project Director	Location W.J. BRYAN DORN VAMC; COLUMBIA, SC	Building Number 100	
					Date 05-09-2014	Checked CMD	
					Drawn JL	Drawing Number PL601	
1 ADDENDUM #1						Dwg. 28 of 51	