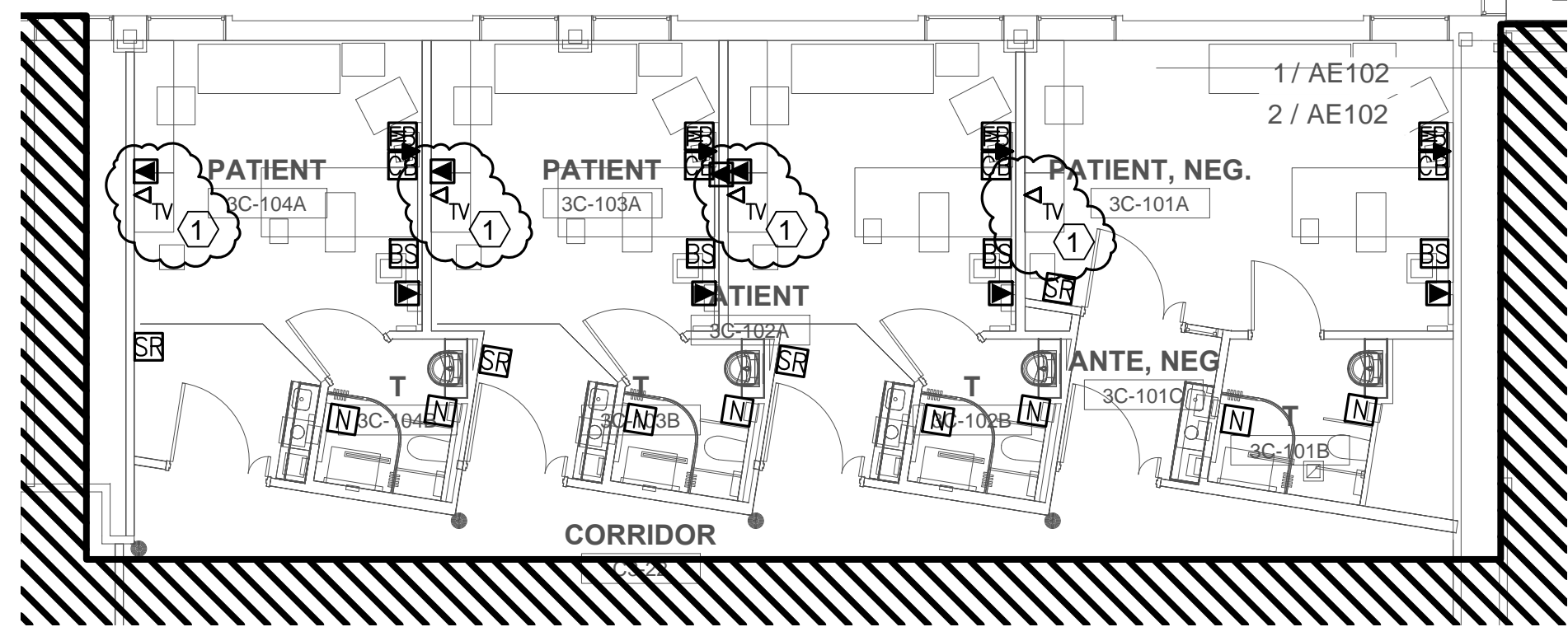
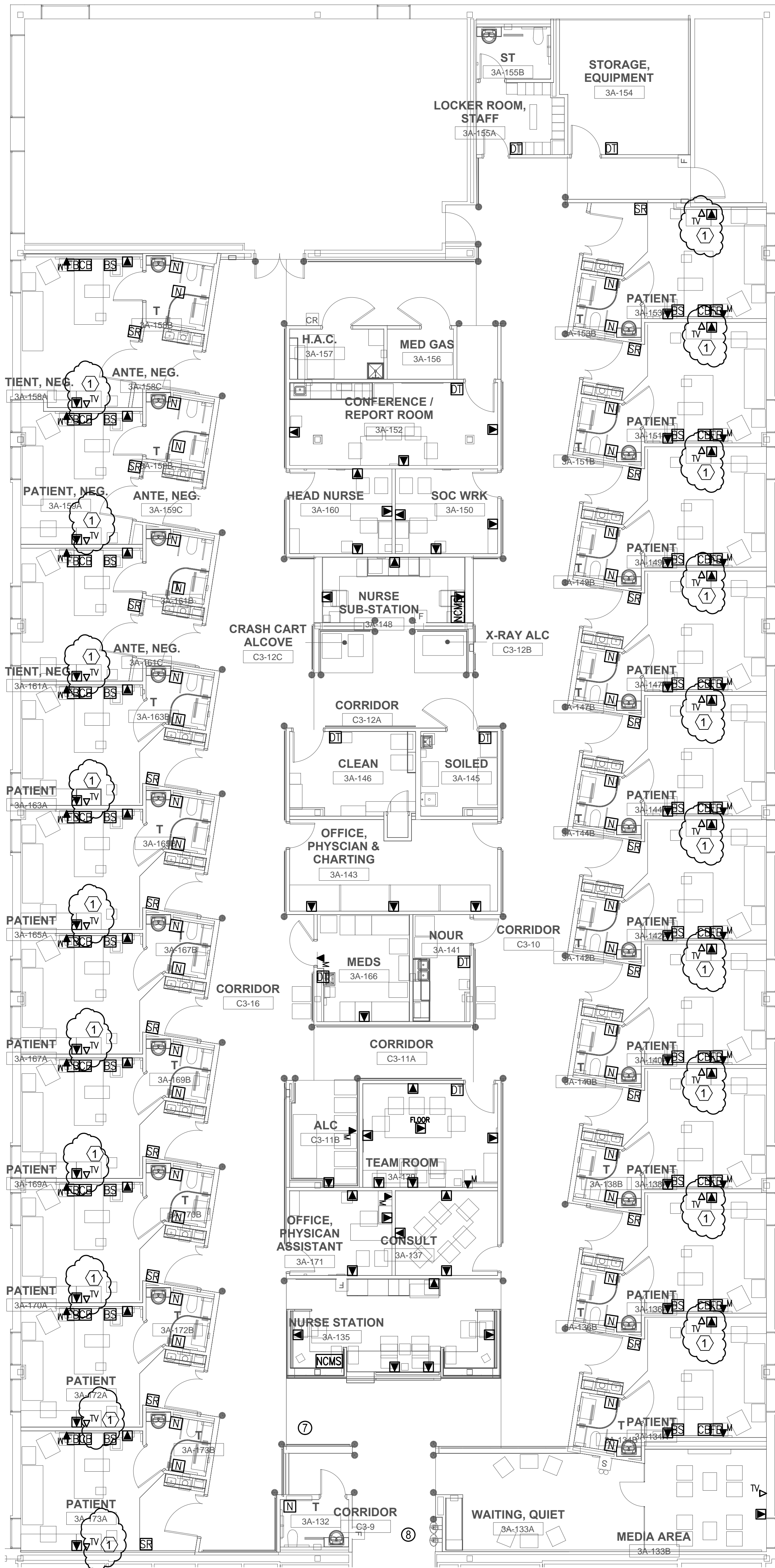


three inches = one foot
one and one half inches = one foot
one inch = one foot
three quarters inch = one foot
one half inch = one foot
one quarter inch = one foot
one eighth inch = one foot
one quarter inch = one foot
one eighth inch = one foot
one quarter inch = one foot
one eighth inch = one foot



DATA/COMM PLAN - NEW WORK
SCALE 1/8" = 1'-0"

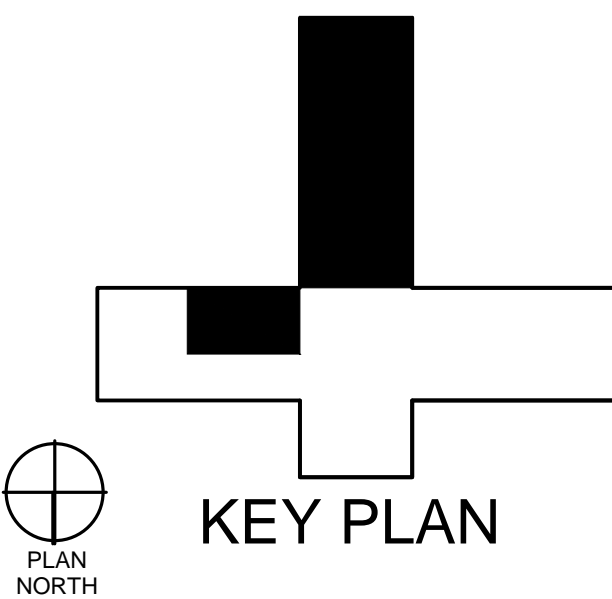


GENERAL NEW WORK NOTES

1. ALL ELECTRICAL WIRING CONDUIT, DEVICES, EQUIPMENT, AND MATERIALS SHALL BE NEW UNLESS OTHERWISE NOTED. PROVIDE ALL CONDUCTORS, CONDUITS, MISCELLANEOUS FITTINGS, ETC. FOR A COMPLETE AND OPERABLE SYSTEM.
2. ALL ELECTRICAL WORK SHALL BE IN ACCORDANCE WITH THE 2012 EDITION OF THE NATIONAL ELECTRIC SAFETY CODE (IEEE C-2) APPROVED OR ADOPTED BY THE LOCAL AUTHORITY HAVING JURISDICTION AND THE NATIONAL ELECTRICAL CODE (NFPA 70).
3. ALL CONDUCTORS SHALL BE COPPER UNLESS OTHERWISE NOTED.
4. ALL INTERIOR ELECTRICAL WIRING SHALL BE IN METALLIC CONDUIT UNLESS OTHERWISE NOTED.
5. PROVIDE FLEXIBLE METALLIC CONDUIT TO ALL MOTOR OPERATE EQUIPMENT.
6. PLANS SHOW REQUIRED BRANCH CIRCUITS INDICATED BY CIRCUIT NUMBER. HOMERUNS SHOWN ARE SCHEMATIC. HOMERUNS MAY ORIGINATE FROM DIFFERENT LOCATIONS. ALL WIRES, INCLUDING HOMERUNS, SHALL BE DELINEATED ON RECORD DRAWINGS.
7. COORDINATE WITH ALL TRADES AND EXISTING CONDITIONS PRIOR TO CONSTRUCTION.
8. ALL EXIT LIGHTING SHALL BE PROVIDED WITH UNSWITCHED POWER.

NEW WORK NOTE

- ① NURSE CALL TV CONNECTION CONTROLLED BY PILLOW SPEAKER.



CONSTRUCTION DOCUMENTS SUBMISSION
FULLY SPRINKLERED

CONSULTANTS:		ARCHITECT/ENGINEERS:		Drawing Title DATA/COMM PLAN - NEW WORK	Project Title RENOVATE MEDICAL SURGICAL UNIT	Project Number 544-13-102	OFFICE OF CONSTRUCTION AND FACILITIES MANAGEMENT	
				Approved: Project Director	Location W.J. BRYAN DORN VAMC; COLUMBIA, SC	Building Number 100		
1. ADD NOTE #1 TO ALL TV'S		BES DESIGN/BUILD			Date 05/16/2014	Checked RLB	Drawn DLA	ET101
Revisions:		BES DESIGN/BUILD						Dwg. 75 of 78