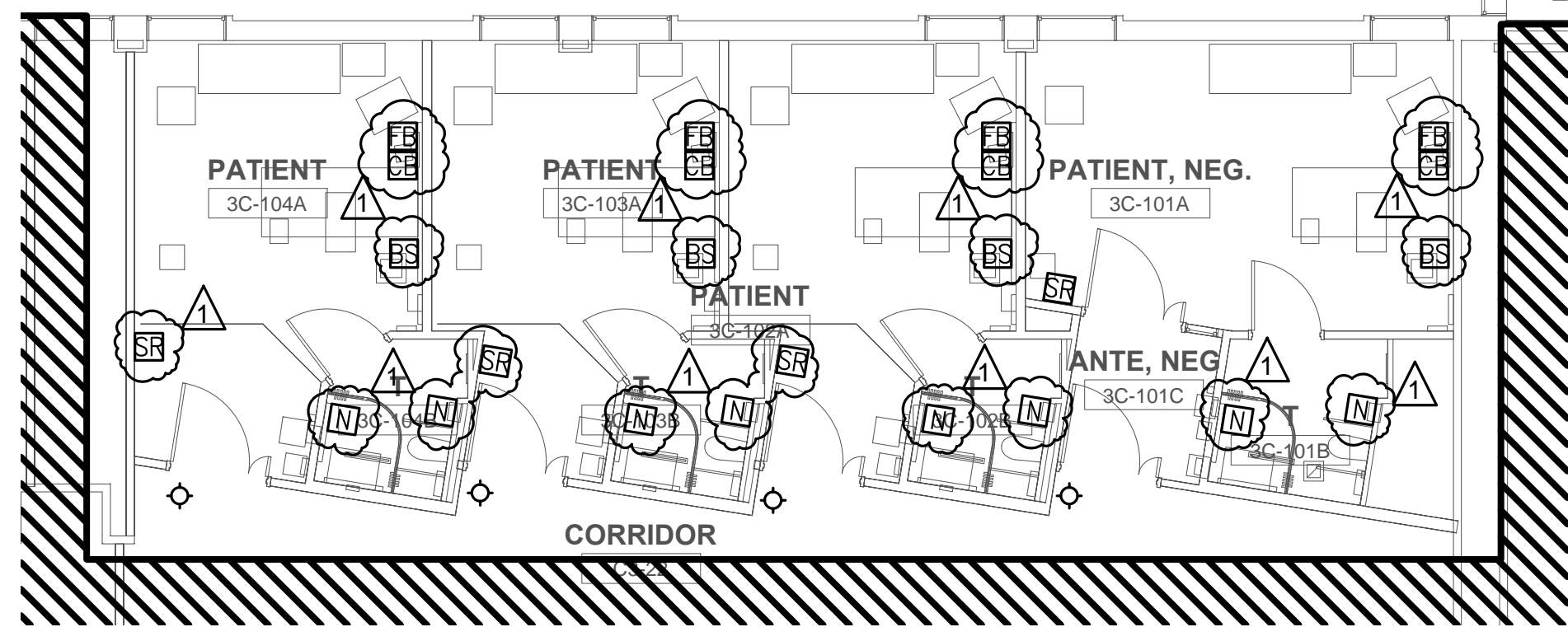
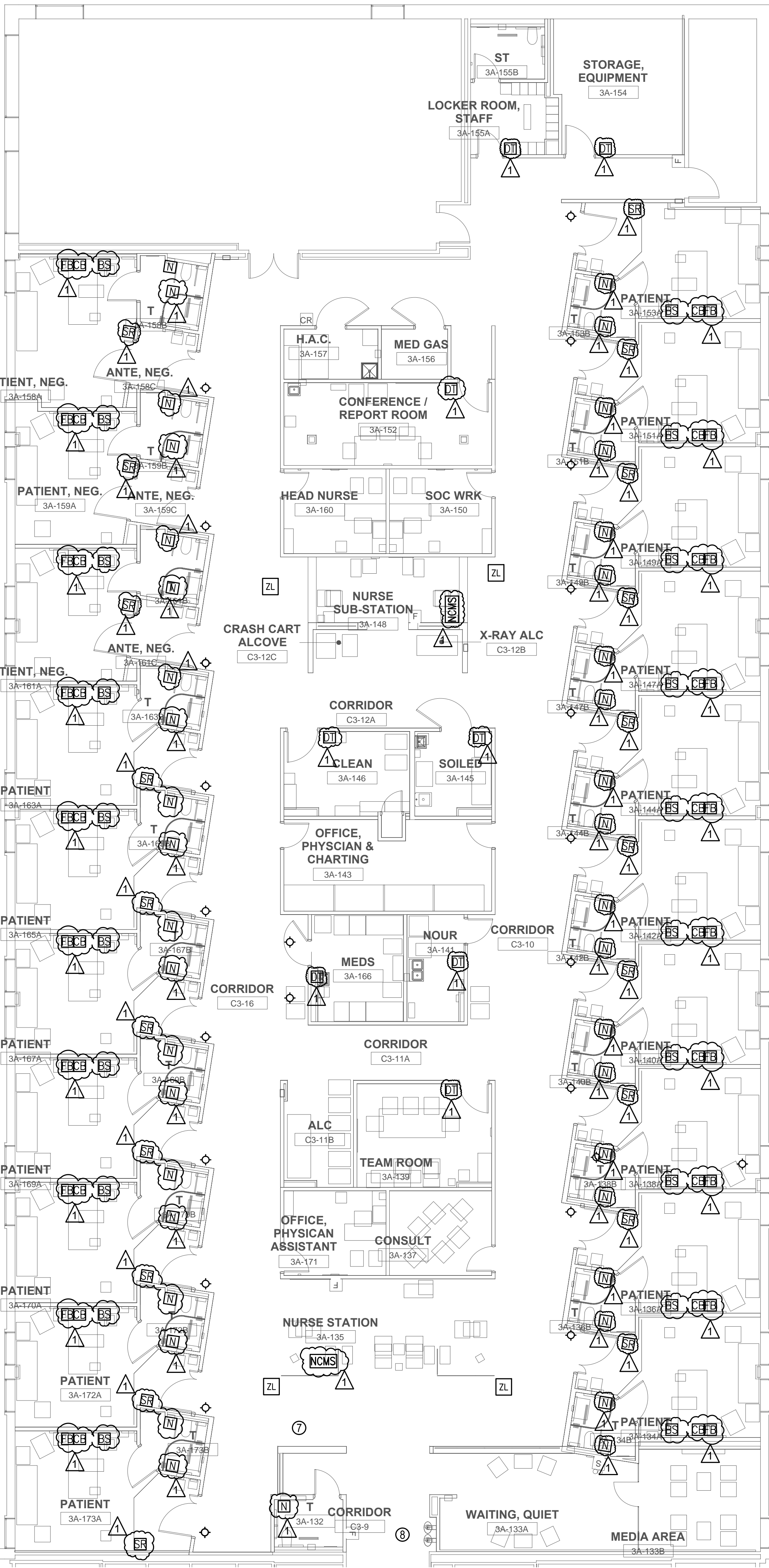


three inches = one foot  
one and one half inches = one foot  
one inch = one foot  
three quarters inch = one foot  
one half inch = one foot  
three eighths inch = one foot  
one quarter inch = one foot  
one eighth inch = one foot



NURSE CALL PLAN - NEW WORK  
SCALE 1/8" = 1'-0"

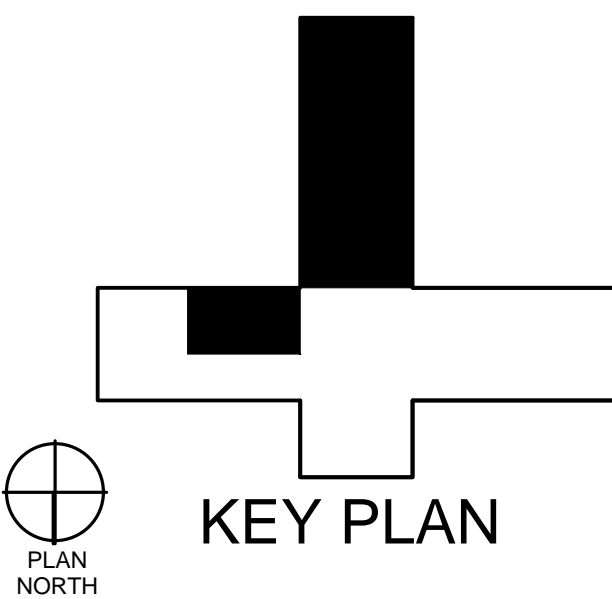


GENERAL NEW WORK NOTES

- ALL ELECTRICAL WIRING CONDUIT, DEVICES, EQUIPMENT, AND MATERIALS SHALL BE NEW UNLESS OTHERWISE NOTED. PROVIDE ALL CONDUCTORS, CONDUITS, MISCELLANEOUS FITTINGS, ETC. FOR A COMPLETE AND OPERABLE SYSTEM.
- ALL ELECTRICAL WORK SHALL BE IN ACCORDANCE WITH THE 2012 EDITION OF THE NATIONAL ELECTRIC SAFETY CODE (IEEE C-2) APPROVED OR ADOPTED BY THE LOCAL AUTHORITY HAVING JURISDICTION AND THE NATIONAL ELECTRICAL CODE (NFPA 70).
- ALL CONDUCTORS SHALL BE COPPER UNLESS OTHERWISE NOTED.
- ALL INTERIOR ELECTRICAL WIRING SHALL BE IN METALLIC CONDUIT UNLESS OTHERWISE NOTED.
- PROVIDE FLEXIBLE METALLIC CONDUIT TO ALL MOTOR OPERATE EQUIPMENT.
- PLANS SHOW REQUIRED BRANCH CIRCUITS INDICATED BY CIRCUIT NUMBER. HOMERUNS SHOWN ARE SCHEMATIC. HOMERUNS MAY ORIGINATE FROM DIFFERENT LOCATIONS. ALL WIRES, INCLUDING HOMERUNS, SHALL BE DELINEATED ON RECORD DRAWINGS.
- COORDINATE WITH ALL TRADES AND EXISTING CONDITIONS PRIOR TO CONSTRUCTION.
- ALL EXIT LIGHTING SHALL BE PROVIDED WITH UNSWITCHED POWER.

NURSE CALL/INTERCOM LEGEND

- |      |  |
|------|--|
| NCMS | NURSE CALL MASTER STATION                                    |
| N    | NURSE CALL BUTTON (TOILET/SHOWER)                            |
| BS   | NURSE CALL BED STATION                                       |
| CB   | NURSE CALL ASSIST STATION (CODE BLUE)                        |
| DT   | NURSE CALL DUTY STATION                                      |
| FB   | NURSE CALL (BE CONNECTION FEATURE)                           |
| SR   | NURSE CALL (BE STAFF BUTTON)                                 |
| ◇    | NURSE CORRIDOR CALL DOME LIGHT (SEE 'C' IN FIXTURE SCHEDULE) |



CONSTRUCTION DOCUMENTS SUBMISSION  
FULLY SPRINKLERED

CONSULTANTS:		ARCHITECT/ENGINEERS:		Drawing Title NURSE CALL PLAN - NEW WORK	Project Title RENOVATE MEDICAL SURGICAL UNIT		Project Number 544-13-102		OFFICE OF CONSTRUCTION AND FACILITIES MANAGEMENT  Department of Veterans Affairs
				Approved: Project Director	Location W.J. BRYAN DORN VAMC; COLUMBIA, SC		Building Number 100		
					Date 05/16/2014		Checked RLB	Drawn DLA	
1. ADD NURSE CALL BUTTONS, NOTES & SYMBOLS Revisions:							Drawing Number EY101 Dwg. 77 of 78		