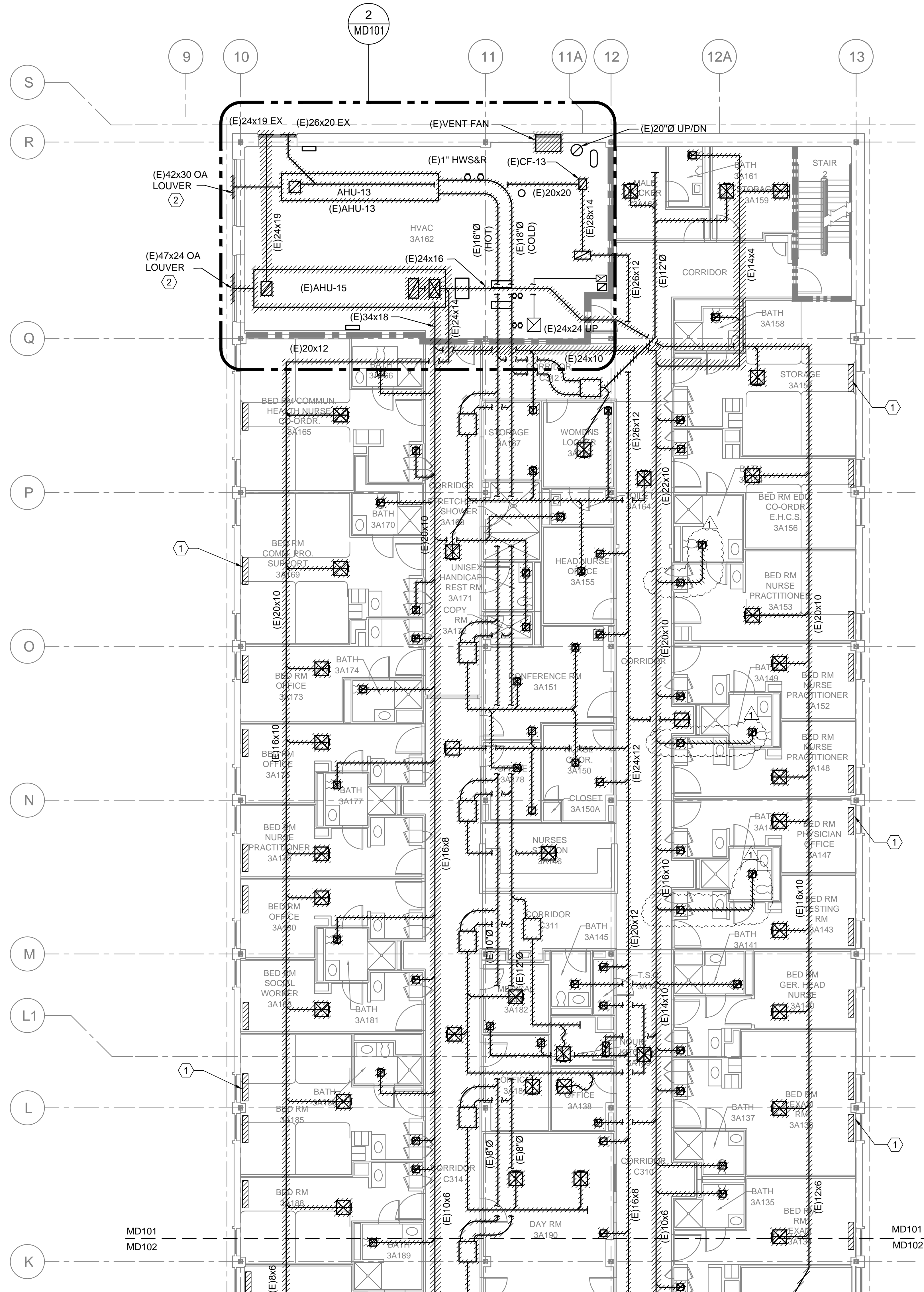


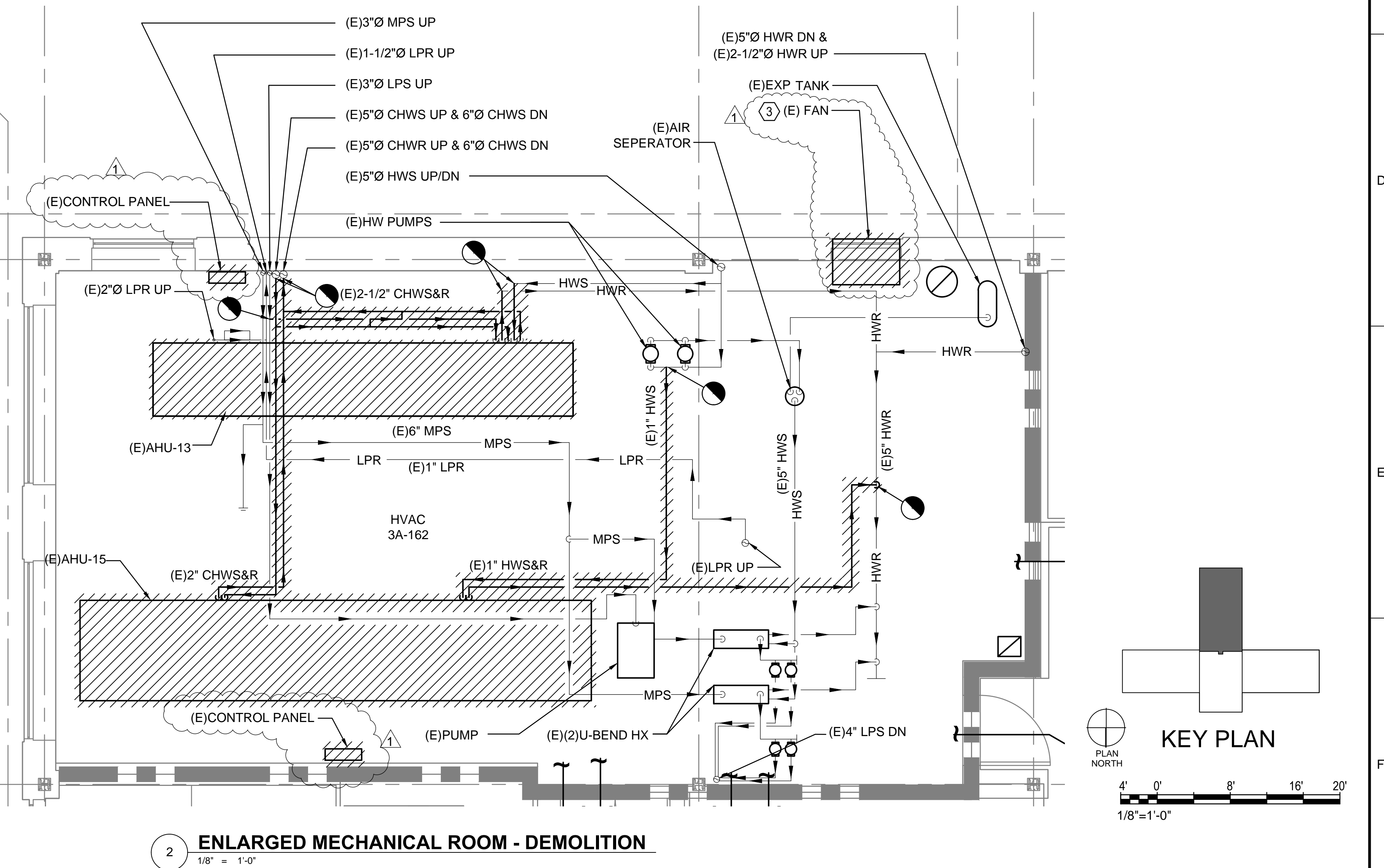
three inches = one foot  
one and one half inches = one foot  
one inch = one foot  
three quarters inch = one foot  
one half inch = one foot  
three eighths inch = one foot  
one quarter inch = one foot  
one eighth inch = one foot



1 SOUTH WING - DEMOLITION  
1/8" = 1'-0"

- ### GENERAL DEMOLITION NOTES
- ALL DUCTWORK, EQUIPMENT, AND PIPING SHOWN WITH HATCHED LINES INDICATE ITEMS TO BE DEMOLISHED. SEE ARCHITECTURAL DRAWINGS AND CODED DEMOLITION NOTES FOR SPECIFIC INFORMATION. EXISTING DUCT TAKE-OFFS MAY BE REUSED IN NEW WORK IF CORRECT SIZE AND LOCATION.
  - SHADED AREAS OF THIS PLAN ARE NOT WITHIN THE PROJECT SCOPE OF WORK AND ARE SHOWN FOR REFERENCE ONLY.
  - LOCATION OF EXISTING EQUIPMENT, DUCTWORK, AIR OUTLETS, CONTROLS AND ALL CONCEALED WORKS, ETC. ARE APPROXIMATE. THE CONTRACTOR SHALL EXAMINE THE SITE PRIOR TO BUILDING AND AFTER DEMOLITION HAS EXPOSED "AS-BUILT" CONDITIONS TO VERIFY EACH AIR OUTLET, AND EQUIPMENT LOCATION. THE CONTRACTOR SHALL MAKE ADJUSTMENTS AND/OR ALTERATIONS AS NECESSARY TO INSTALL COMPLETE AND OPERABLE SYSTEMS IN ACCORDANCE WITH THE CODES HAVING JURISDICTION AT NO ADDITIONAL COST TO THE GOVERNMENT.
  - ALL OPENINGS AND SURFACES MADE BARE BY DEMOLITION AND/OR REMOVAL OF AIR OUTLETS, EQUIPMENT, CONTROLS, ETC. SHALL BE REPAIRED AND/OR PATCHED TO MATCH ADJACENT FINISH. PREPARE SURFACES TO RECEIVE NEW FINISH. SEE ARCHITECTURAL DRAWINGS FOR NEW FINISH SCHEDULE. ALL REPAIRS AND NEW FINISH SHALL BE BY TRADES SKILLED IN FINISH WORKS UNDER EMPLOY OF THE GENERAL CONTRACTOR.
  - DURING THE LIFE OF THE CONTRACT (CONSTRUCTION AND DEMOLITION TO POINT OF BENEFICIAL OCCUPANCY BY OWNER), THE CONTRACTOR SHALL PROTECT ALL SYSTEMS OR PORTIONS OF SYSTEMS TO REMAIN FOR REUSE FROM DAMAGE. ALL SYSTEMS SHALL BE TESTED IN SERVICE AFTER COMPLETION OF THE CONTRACT AND MADE COMPLETE AND OPERABLE AT NO ADDITIONAL COST TO THE GOVERNMENT.
  - NOT ALL CONTROL CIRCUITS AND DEVICES ARE INDICATED. FOR EACH CONTROL AND, DEVICE THERE IS A CIRCUIT OR FEEDER BACK TO THE POINT OF ORIGIN. WHERE WALLS, FLOORS OR CEILING ARE TO BE DEMOLISHED ALL MATERIAL, SURFACE OR FLUSH MOUNTED THEREON SHALL BE REMOVED UNLESS INDICATED OR REQUIRED TO REMAIN TO SERVE A DEVICE.
  - DEMOLISH CONTROLS AND DEVICES PERTAINING TO THE HVAC EQUIPMENT BEING DEMOLISHED OR REPLACED. NEW DDC SYSTEM SHALL BE AN EXTENSION OF EXISTING BUILDING MANAGEMENT SYSTEM. SEE MECHANICAL CONTROLS SHEET FOR DETAIL INFORMATION.
  - SEE ARCHITECTURAL DRAWINGS AND SPECIFICATION FOR ADDITIONAL INFORMATION. COORDINATE ALL DEMOLITION WITH ALL TRADES INVOLVED.
  - DEMOLISH ALL PIPING BACK TO THE MAIN AND CAP. LEAVE NO DEAD END BRANCHES. NO PIPING SHALL BE ABANDONED ABOVE THE CEILING OR BELOW THE FLOOR UNLESS NOTED OTHERWISE. PATCH FLOOR AND WALL PENETRATIONS LEFT BEHIND FROM DEMOLISHED PIPING TO MATCH EXISTING CONDITIONS.
  - ALL WORK MUST BE ACCOMPLISHED IN PHASES AS SPECIFIED AND/OR INDICATED. SEE ARCHITECTURAL DRAWINGS AND SPECIFICATIONS FOR ADDITIONAL INFORMATION. THE BUILDING WILL BE OCCUPIED AND IN OPERATION DURING THE LIFE OF THE CONTRACT. WORK SHALL BE ACCOMPLISHED IN AREAS AND/OR PHASES SO AS TO PERMIT CONTINUOUS OPERATION OF THE FACILITIES, INCLUDING HANGAR BARRELS AND ADMINISTRATIVE AREAS. THESE FACILITIES ARE IN USE 24 HOURS PER DAY, 7 DAYS A WEEK. THE CONTRACTOR SHALL PROVIDE TEMPORARY SERVICES AS REQUIRED TO MAINTAIN SYSTEMS (INCLUDING FIRE DETECTION/ALARM, LIFE SAFETY, FIRE PROTECTION SYSTEMS, HVAC SYSTEMS, CONTROL SYSTEMS, ETC.)
  - THE CONTRACTOR SHALL COORDINATE WITH THE CONTRACTING OFFICER FOR ACCESS TO AREAS OF THE BUILDING NOT IN CONTRACT WHICH WILL REMAIN OPERATIONAL DURING CONSTRUCTION. ANY BREAKS IN UTILITY OR HVAC SERVICE SHALL BE COORDINATED WITH THE CONTRACTING OFFICER PRIOR TO WORK COMMENCING.

- ### DEMOLITION KEY NOTES
- FAN COIL UNIT (SOUTH & EAST WINGS) TO BE REMOVED AND ASSOCIATED PIPING TO BE DRAINED AND REMOVED. PATCH FLOOR TO MATCH EXISTING. REFER TO MECHANICAL DETAILS. (TYPICAL)
  - DEMOLISH EXISTING MECHANICAL LOUVERS AND EXTERIOR WALL, AS REQUIRED, FOR DEMOLITION OF EXISTING AIR HANDLING UNITS. PROVIDE WALL OPENING LARGE ENOUGH TO INSTALL NEW AIR HANDLING UNIT INTO BUILDING.
  - REMOVE AND RELOCATE EXISTING EXHAUST FAN. REUSE EXISTING WALL OPENING FOR INSTALLATION OF NEW EXHAUST LOUVER. REFER TO MECHANICAL FLOOR PLAN MH101.
  - DEMOLISH DRYER VENT DUCTWORK IN LAUNDRY.



2 ENLARGED MECHANICAL ROOM - DEMOLITION  
1/8" = 1'-0"

### CONSTRUCTION DOCUMENT SUBMISSION FULLY SPRINKLERED

<b>CONSULTANTS:</b>		<b>ARCHITECT/ENGINEERS:</b>		<b>Drawing Title</b>		<b>Project Title</b>		<b>Project Number</b>		<b>OFFICE OF CONSTRUCTION AND FACILITIES MANAGEMENT</b>	
				<b>MECHANICAL DEMOLITION PLAN SOUTH WING</b>		<b>RENOVATE MEDICAL SURGICAL UNIT</b>		<b>544-13-102</b>		<b>Department of Veterans Affairs</b>	
				Approved: Project Director		Location W.J. BRYAN DORN VAMC; COLUMBIA, SC		Building Number 100			
						Date 05-16-2014		Checked CD		Drawing Number MD101	
										Dwg. 45 of 78	

1 ADDENDUM #1 6/4/2014  
Revisions: Date

VA FORM 08-6231