

three inches = one foot
one and one half inches = one foot
one inch = one foot
three quarters inch = one foot
one half inch = one foot
three eighths inch = one foot
one quarter inch = one foot
one eighth inch = one foot

GENERAL WORK NOTES

1.

PROVIDE NEW FAN COIL UNIT (FCU) AS SCHEDULED.

2.

PROVIDE NEW AIR OUTLET AS SCHEDULED.

3.

PROVIDE NEW DUCTWORK WITH HANGERS AND SUPPORTS WITH APPLIED CONNECTORS.

4.

PROVIDE NEW SPACE TEMPERATURE SENSOR (THERMOSTAT)

5.

CONNECT NEW AIR DEVICES TO EXISTING DUCTWORK, AS SHOWN. EXISTING DUCT TAKE-OFFS MAY BE REUSED IF CORRECT SIZE AND LOCATION.

6.

SEE SHEET MP101 AND MP102 FOR MECHANICAL PIPING IN THIS AREA.

7.

INSPECT EXISTING FIRE AND SMOKE DAMPERS TO REMAIN AND VERIFY THAT THEY ARE IN PROPER WORKING ORDER. REPORT ANY DEFICIENCIES TO THE CONTRACTING OFFICER'S REPRESENTATIVE.

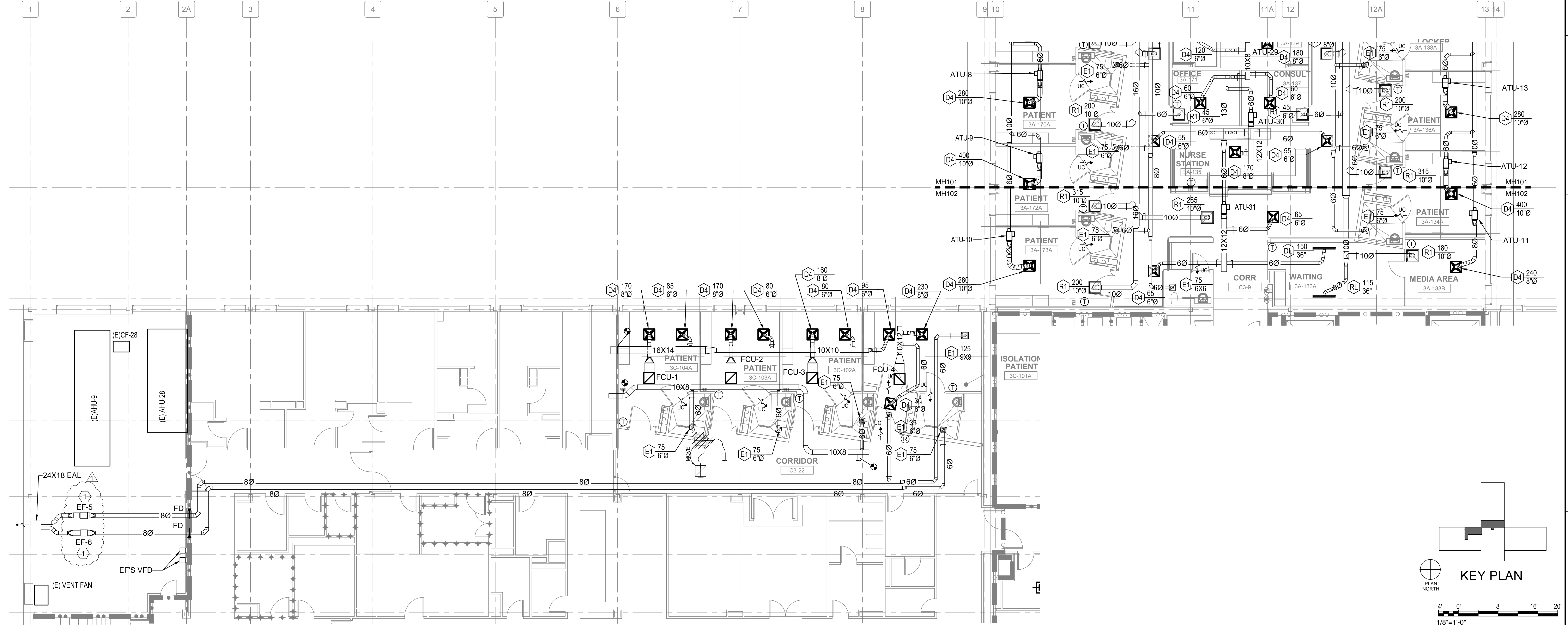
8.

ALL CONTAMINATED DUCTS AND FILTERS FOR PATIENT ISOLATION ROOMS SHALL BE LABEL AS 'BIOHAZARD' IN ACCORDANCE WITH THE VA STANDARDS AND SPECIFICATIONS.

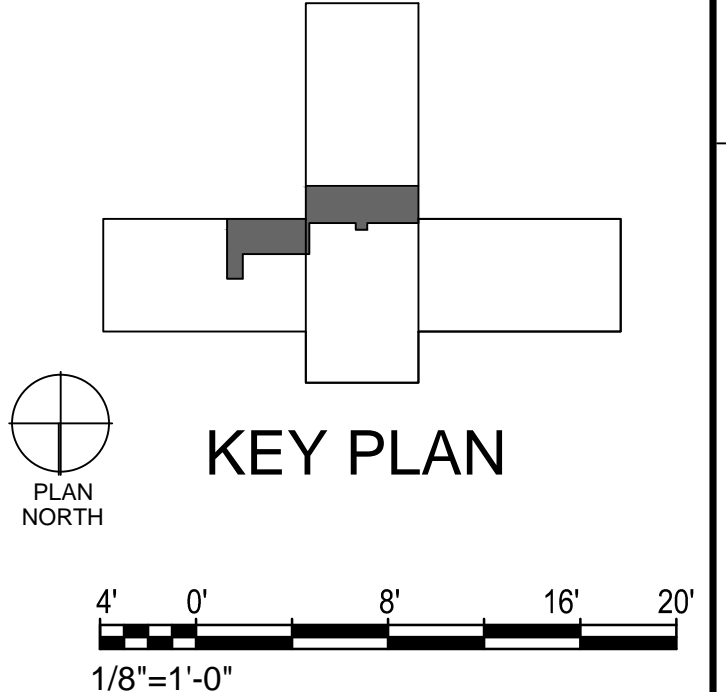
SHEET KEY NOTES

1

PROVIDE EXHAUST FAN WITH FILTER BOX FOR MERV 7 PREFILTER AND MERV 17 HEPA FILTER DOWNSTREAM OF FAN. (TYPICAL)



1 EAST & SOUTH WING - NEW WORK
1/8" = 1'-0"



<div>1 ADDENDUM #1 6/4/2014</div> <div>Revisions: Date</div>	CONSULTANTS:		ARCHITECT/ENGINEERS: BES DESIGN/BUILD, LLC 766 Middle St, Fairhope, AL 36532 Phone: 251.990.5778 Fax: 251.990.3716	Drawing Title MECHANICAL HVAC PLAN EAST WING & PARTIAL SOUTH WING	Project Title RENOVATE MEDICAL SURGICAL UNIT		Project Number 544-13-102		OFFICE OF CONSTRUCTION AND FACILITIES MANAGEMENT
				Approved: Project Director	Location W.J. BRYAN DORN VAMC; COLUMBIA, SC		Building Number 100		
				Date 05-16-2014	Checked CD	Drawn CD	Drawing Number MH102		
				Dwg. 48 of 78					