

three eighths inch = one foot
one quarter inch = one foot
one eighth inch = one foot
one half inch = one foot
three quarters inch = one foot
one inch = one foot
one and one half inches = one foot
two inches = one foot
three inches = one foot
four inches = one foot
five inches = one foot
six inches = one foot
seven inches = one foot
eight inches = one foot
nine inches = one foot
ten inches = one foot
eleven inches = one foot
twelve inches = one foot
thirteen inches = one foot
fourteen inches = one foot
fifteen inches = one foot
sixteen inches = one foot
seventeen inches = one foot
eighteen inches = one foot
nineteen inches = one foot
twenty inches = one foot
twenty one inches = one foot
twenty two inches = one foot
twenty three inches = one foot
twenty four inches = one foot
twenty five inches = one foot
twenty six inches = one foot
twenty seven inches = one foot
twenty eight inches = one foot
twenty nine inches = one foot
thirty inches = one foot
thirty one inches = one foot
thirty two inches = one foot
thirty three inches = one foot
thirty four inches = one foot
thirty five inches = one foot
thirty six inches = one foot
thirty seven inches = one foot
thirty eight inches = one foot
thirty nine inches = one foot
forty inches = one foot
forty one inches = one foot
forty two inches = one foot
forty three inches = one foot
forty four inches = one foot
forty five inches = one foot
forty six inches = one foot
forty seven inches = one foot
forty eight inches = one foot
forty nine inches = one foot
fifty inches = one foot
fifty one inches = one foot
fifty two inches = one foot
fifty three inches = one foot
fifty four inches = one foot
fifty five inches = one foot
fifty six inches = one foot
fifty seven inches = one foot
fifty eight inches = one foot
fifty nine inches = one foot
sixty inches = one foot
sixty one inches = one foot
sixty two inches = one foot
sixty three inches = one foot
sixty four inches = one foot
sixty five inches = one foot
sixty six inches = one foot
sixty seven inches = one foot
sixty eight inches = one foot
sixty nine inches = one foot
seventy inches = one foot
seventy one inches = one foot
seventy two inches = one foot
seventy three inches = one foot
seventy four inches = one foot
seventy five inches = one foot
seventy six inches = one foot
seventy seven inches = one foot
seventy eight inches = one foot
seventy nine inches = one foot
eighty inches = one foot
eighty one inches = one foot
eighty two inches = one foot
eighty three inches = one foot
eighty four inches = one foot
eighty five inches = one foot
eighty six inches = one foot
eighty seven inches = one foot
eighty eight inches = one foot
eighty nine inches = one foot
ninety inches = one foot
ninety one inches = one foot
ninety two inches = one foot
ninety three inches = one foot
ninety four inches = one foot
ninety five inches = one foot
ninety six inches = one foot
ninety seven inches = one foot
ninety eight inches = one foot
ninety nine inches = one foot
one hundred inches = one foot

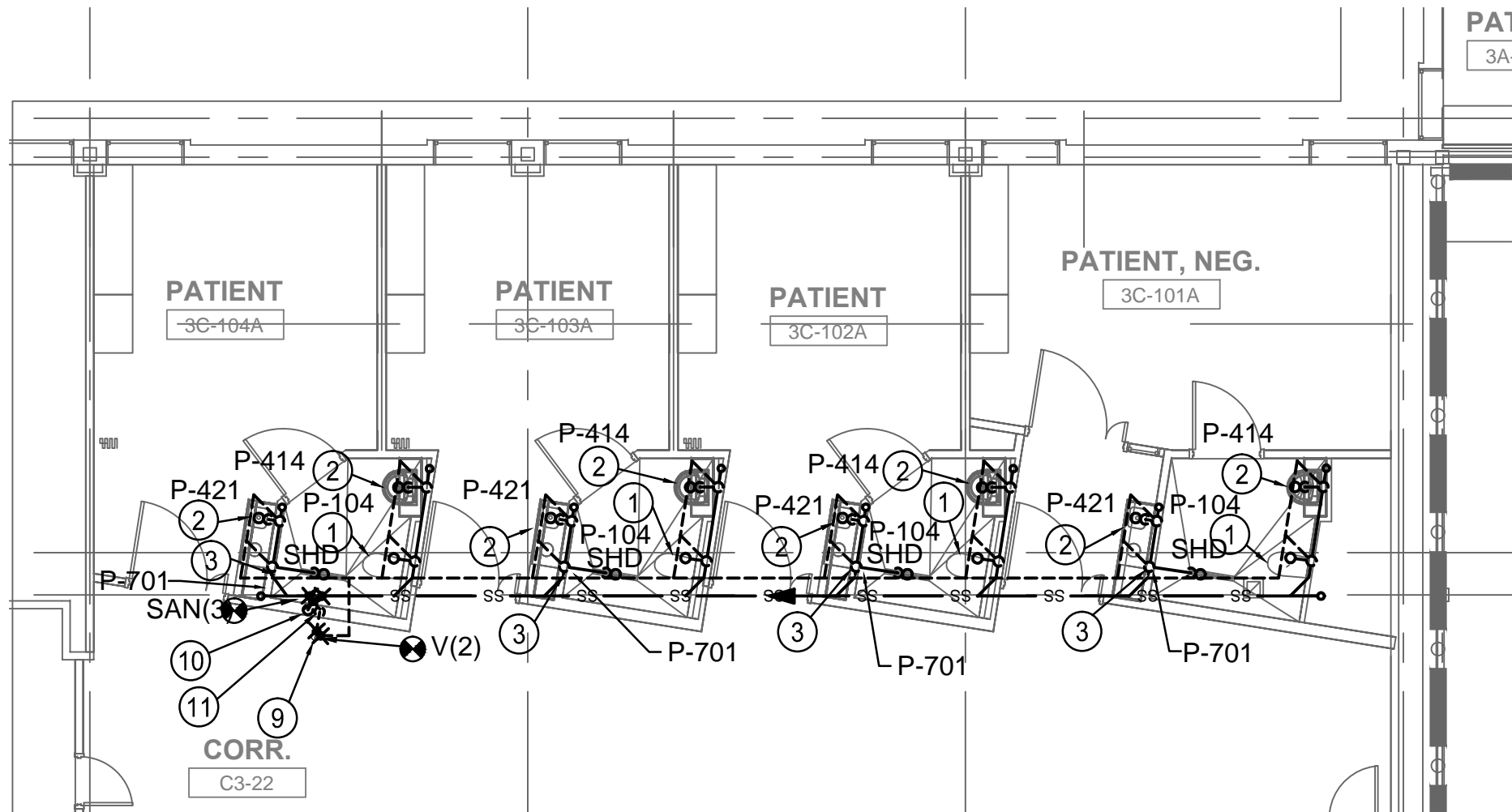
- SHEET KEYNOTES**
1. INSTALL NEW WALL-HUNG TOILET ON FLOOR MOUNTED CARRIER. ROUTE NEW PLUMBING AND TIE-IN TO EXISTING SAN & V LINES.
 2. INSTALL NEW WALL-HUNG LAVATORY ON FLOOR MOUNTED CARRIER. ROUTE NEW PLUMBING AND TIE-IN TO EXISTING SAN & V LINES.
 3. INSTALL NEW SHOWER FLOOR DRAIN. ROUTE NEW PLUMBING AND TIE-IN TO EXISTING SAN & V LINES.
 4. INSTALL NEW SINGLE COMPARTMENT COUNTERTOP SINK. ROUTE NEW PLUMBING AND TIE-IN TO EXISTING SAN & V LINES.
 5. INSTALL NEW DOUBLE COMPARTMENT COUNTERTOP SINK. ROUTE NEW PLUMBING AND TIE-IN TO EXISTING SAN & V LINES.
 6. INSTALL CLINIC SERVICE SINK WITH BED PAN WASHER. ROUTE NEW PLUMBING AND TIE-IN TO EXISTING SAN & V LINES.
 7. INSTALL NEW DRINKING FOUNTAIN. ROUTE NEW PLUMBING AND TIE-IN TO EXISTING CW, SAN & V LINES.
 8. INSTALL NEW SERVICE SINK. ROUTE NEW PLUMBING AND TIE-IN TO EXISTING CW, HW, SAN & V LINES.
 9. OFFSET EXISTING SAN, WASTE AND VENT LINES APPROXIMATELY AS SHOWN TO CORRECTLY ALIGN EXISTING VERTICAL DROPS WITH NEW WALLS ON 3RD FLOOR.
 10. 4" SAN UP AND DN IN WALL.
 11. 4" V UP AND DN IN WALL.
 12. (E)4" SAN UP AND DN IN WALL.
 13. (E)4" V UP AND DN IN WALL.
 14. (E)4" SAN UP.
 15. (E)4" V UP.
 16. (E)4" SAN DN.
 17. (E)4" V DN.
 18. (E)2" AV DN.
 19. (E)2" AV UP.

GENERAL NOTES

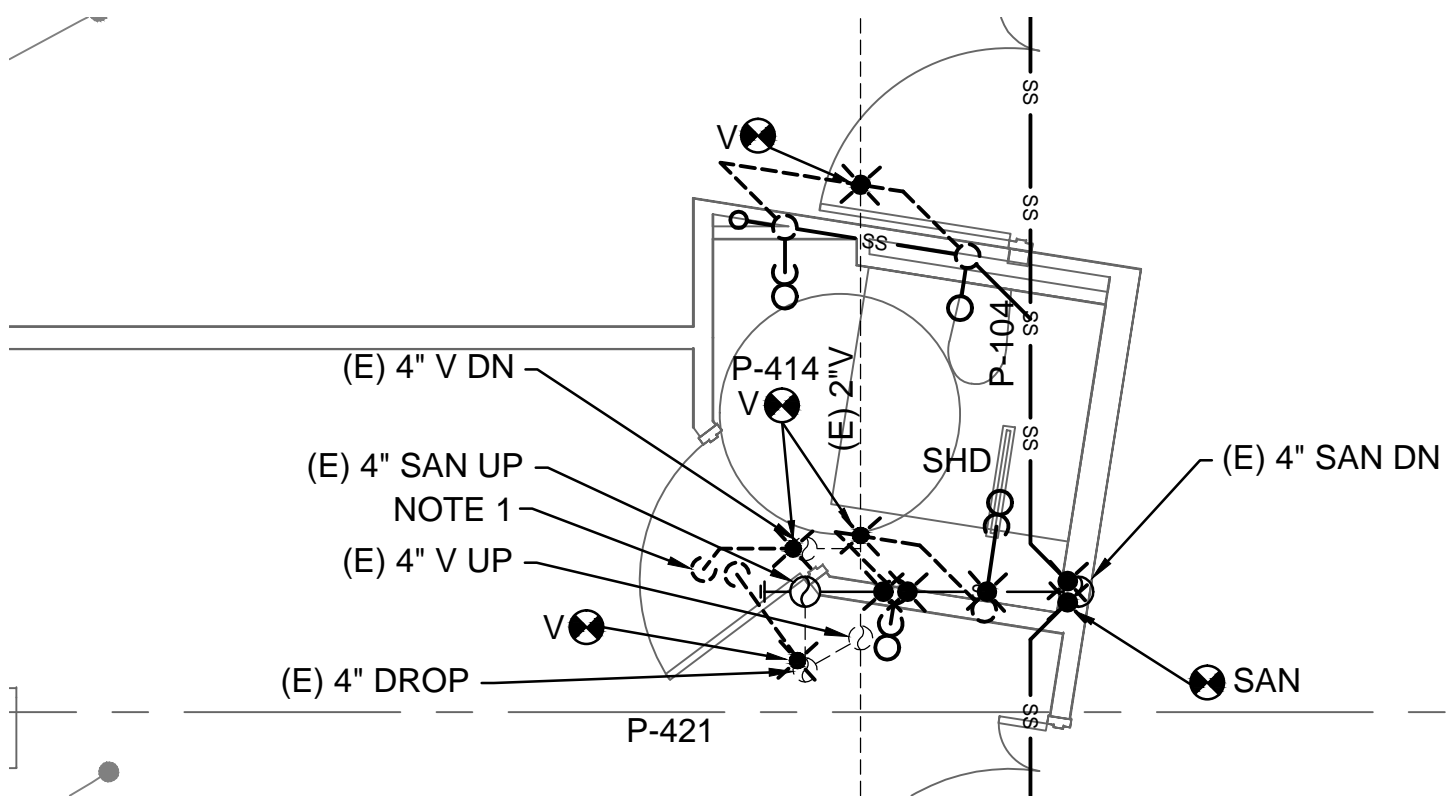
SEE SHEET PL001 FOR GENERAL NOTES.

PLUMBING SYMBOLS

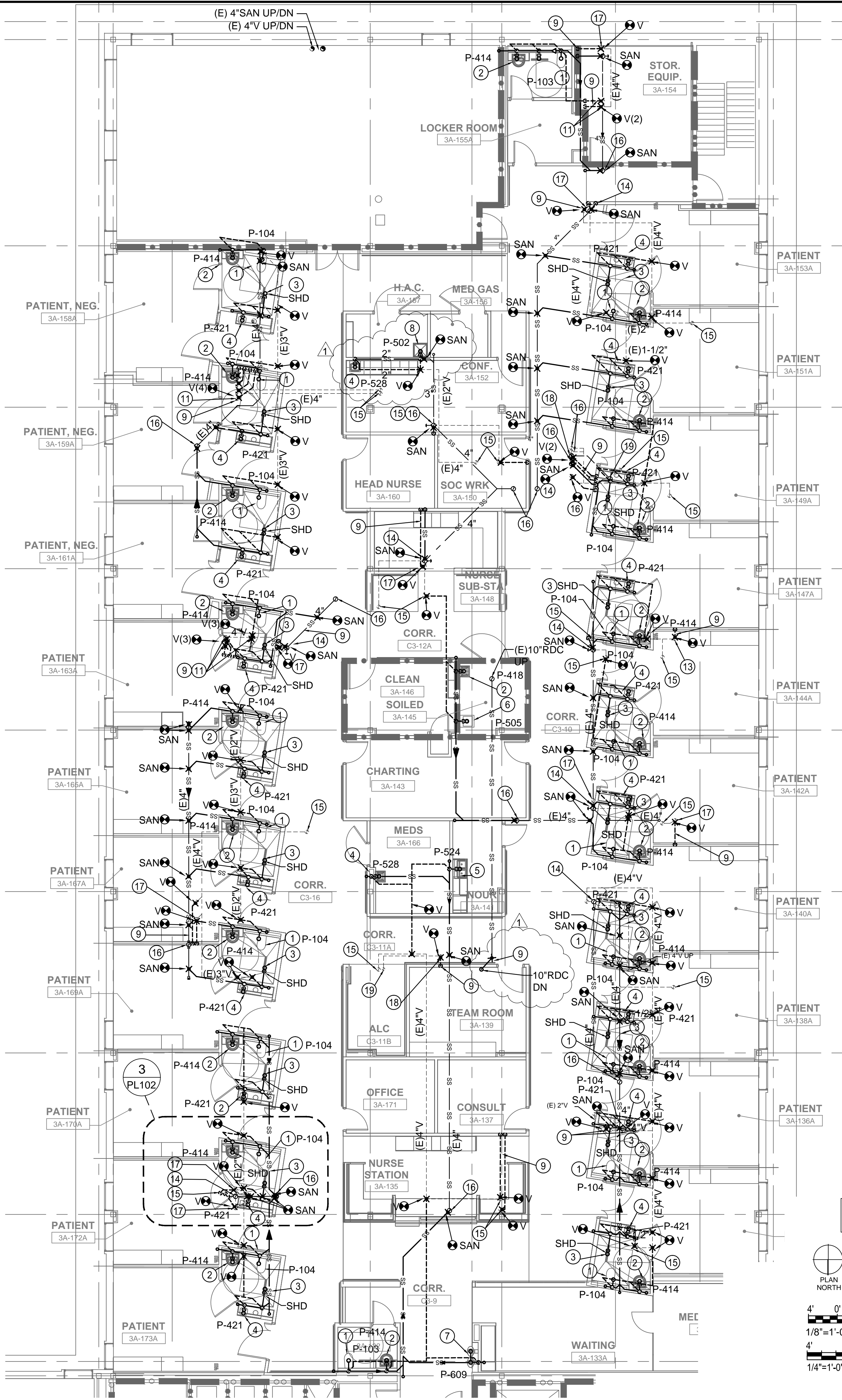
SEE SHEET PL001 FOR PLUMBING SYMBOLS.



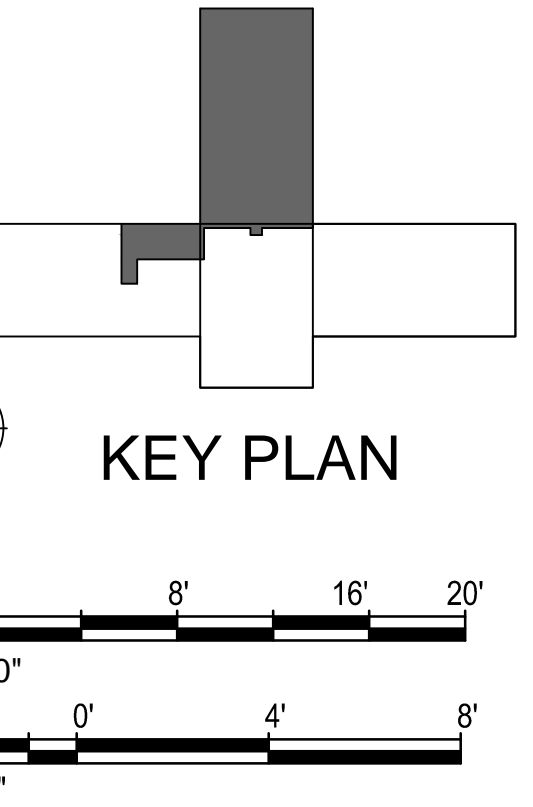
2 PLUMBING FLOOR PLAN - SAN, W&V - EAST WING
1/8" = 1'-0"



3 ENLARGED VIEW - TOILET 3A-172A
1/4" = 1'-0"



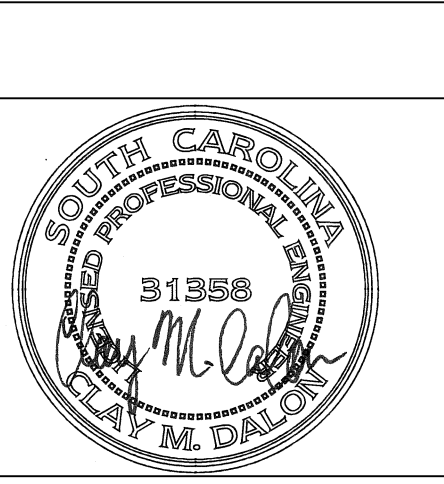
1 PLUMBING FLOOR PLAN - SAN, W&V - SOUTH WING
1/8" = 1'-0"



KEY PLAN

1	ADDENDUM #1	6/4/2014
Revisions:		Date

CONSULTANTS:



ARCHITECT/ENGINEERS:

BES
DESIGN/BUILD

BES DESIGN/BUILD, LLC
766 Middle St, Fairhope, AL 36532
Phone: 251.990.5778 Fax: 251.990.3716

Drawing Title
**PLUMBING FLOOR PLAN - SANITARY,
WASTE AND VENT - EAST AND SOUTH WING**

Approved: Project Director

Project Title
**RENOVATE MEDICAL SURGICAL
UNIT**

Location
W.J. BRYAN DORN VAMC; COLUMBIA, SC

Date
05-16-2014

Checked
CD

Drawn
JL

Project Number
544-13-102

Building Number
100

Drawing Number
PL102

Dwg. 39 of 78

**OFFICE OF
CONSTRUCTION
AND
FACILITIES
MANAGEMENT**

Department of
Veterans Affairs