

three inches = one foot  
one and one half inches = one foot  
one inch = one foot  
three quarters inch = one foot  
one half inch = one foot  
three eighths inch = one foot  
one quarter inch = one foot  
one eighth inch = one foot

### SHEET KEYNOTES

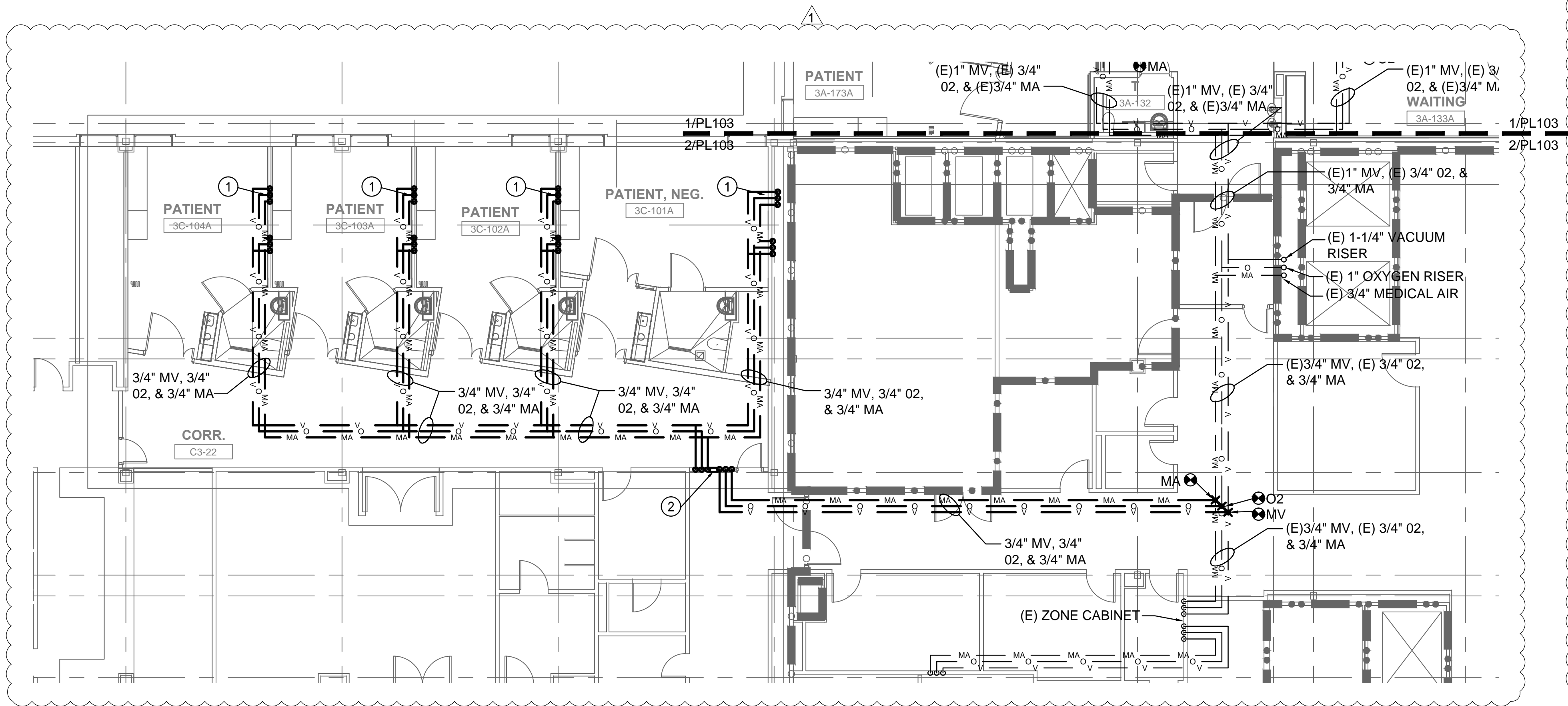
1. INSTALL NEW AIR FLOWMETER, OXYGEN FLOWMETER & VACUUM PRESSURE REGULATOR IN PATIENT ROOMS FOR CONNECTION TO CENTRAL PIPED SYSTEM. EACH PATIENT ROOM HEAD WALL SYSTEM WILL HAVE (2) MEDICAL AIR OUTLETS, (2) VACUUM OUTLETS AND (2) OXYGEN OUTLETS. TIE INTO EXISTING SERVICE PIPING AND REUSE AS MUCH AS POSSIBLE. ALL PIPE DROPS FROM BRANCH LINES SHALL BE 1/2" DIAMETER.
2. PROVIDE NEW ZONE VALVE BOX IN WALL, AS SHOWN. RECONNECT NEW SERVICE PIPING TO EXISTING APPROXIMATELY AS SHOWN.
3. PROVIDE MEDICAL ELECTRONIC GAS ALARM PANEL AT NURSE STATION. PROVIDE ALARM PANEL WITH LCD READOUT INDICATING A (SOUTH WING) ZONE LOW, HIGH AND NORMAL OPERATING LEVELS FOR OXYGEN, VACUUM AND MEDICAL AIR. COORDINATE INSTALLATION WITH ELECTRICAL FLOOR PLANS AND REFER TO PLUMBING SPECIFICATIONS 22 62 00 AND 22 63 00.

### GENERAL NOTES

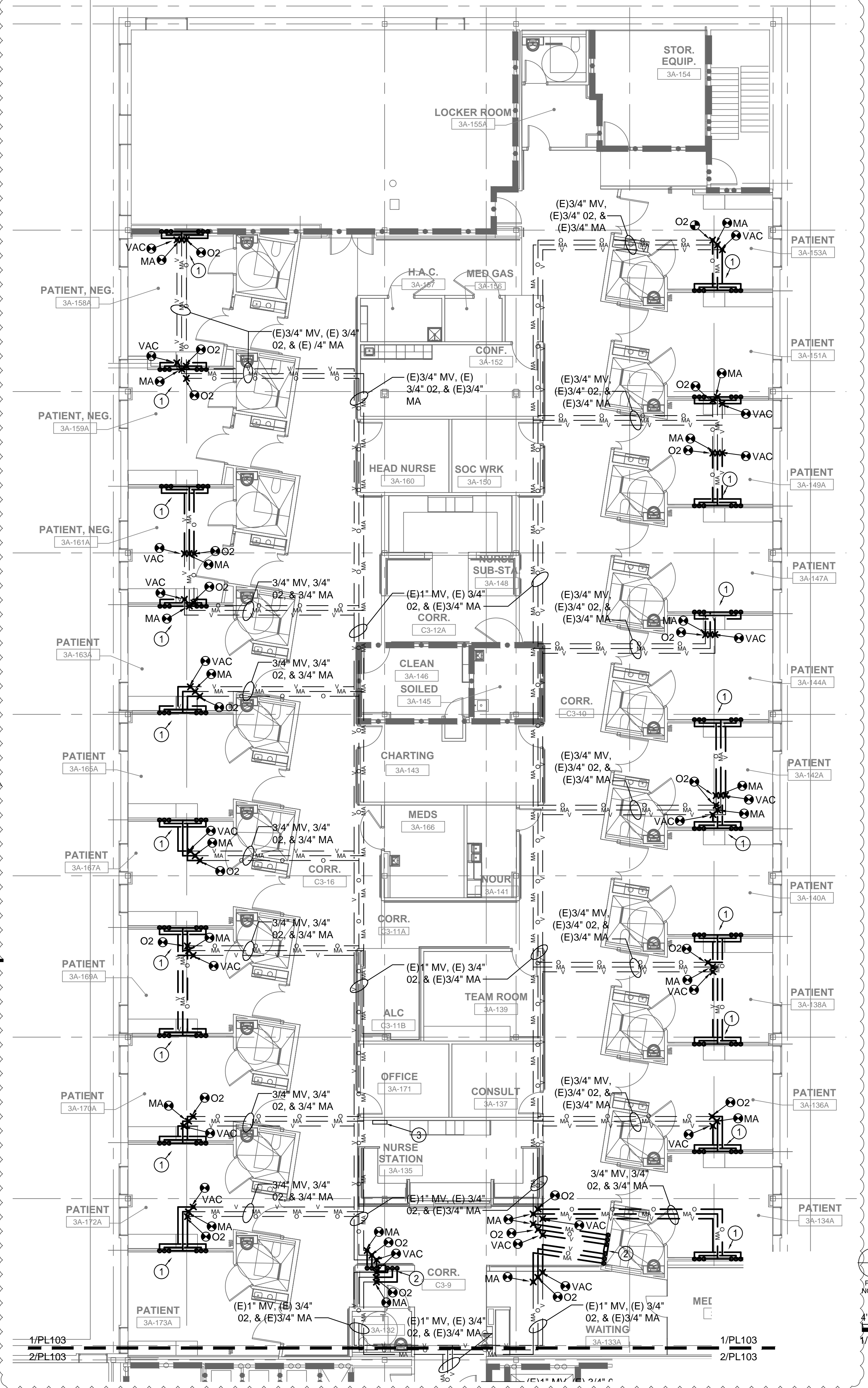
SEE SHEET PL001 FOR GENERAL PLUMBING NOTES.

### PLUMBING SYMBOLS

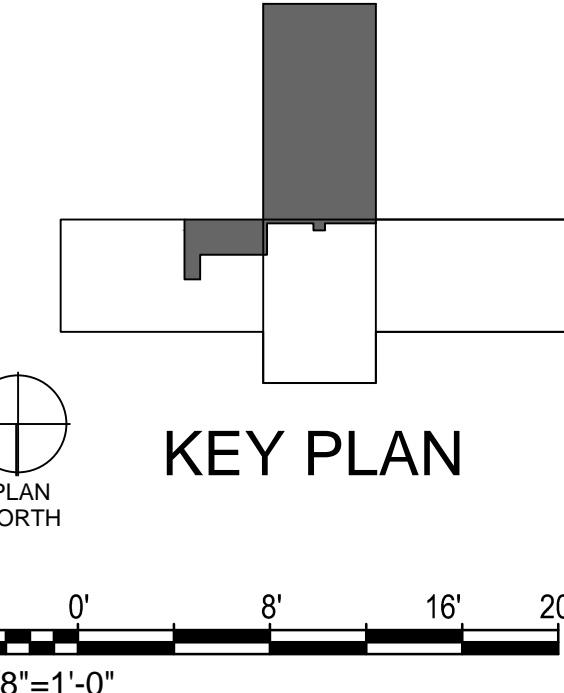
SEE SHEET PL001 PLUMBING SYMBOLS.



2 PLUMBING FLOOR PLAN - MEDICAL GAS - EAST WING  
1/8" = 1'-0"



1 PLUMBING FLOOR PLAN - MEDICAL GAS - SOUTH WING  
1/8" = 1'-0"



CONSTRUCTION DOCUMENT SUBMISSION  
FULLY SPRINKLERED

CONSULTANTS:		ARCHITECT/ENGINEERS:		Drawing Title PLUMBING FLOOR PLAN - MEDICAL GAS EAST AND SOUTH WING		Project Title RENOVATE MEDICAL SURGICAL UNIT		Project Number 544-13-102		OFFICE OF CONSTRUCTION AND FACILITIES MANAGEMENT	
				Approved: Project Director		Location W.J. BRYAN DORN VAMC; COLUMBIA, SC		Building Number 100		Department of Veterans Affairs	
1 ADDENDUM #1		31388		BES DESIGN/BUILD, LLC 766 Middle St, Fairhope, AL 36532 Phone: 251.990.5778 Fax: 251.990.3716		Date 05-16-2014		Checked CD		Drawing Number PL103	
Revisions:		6/4/2014				Dwg. 40 of 78					