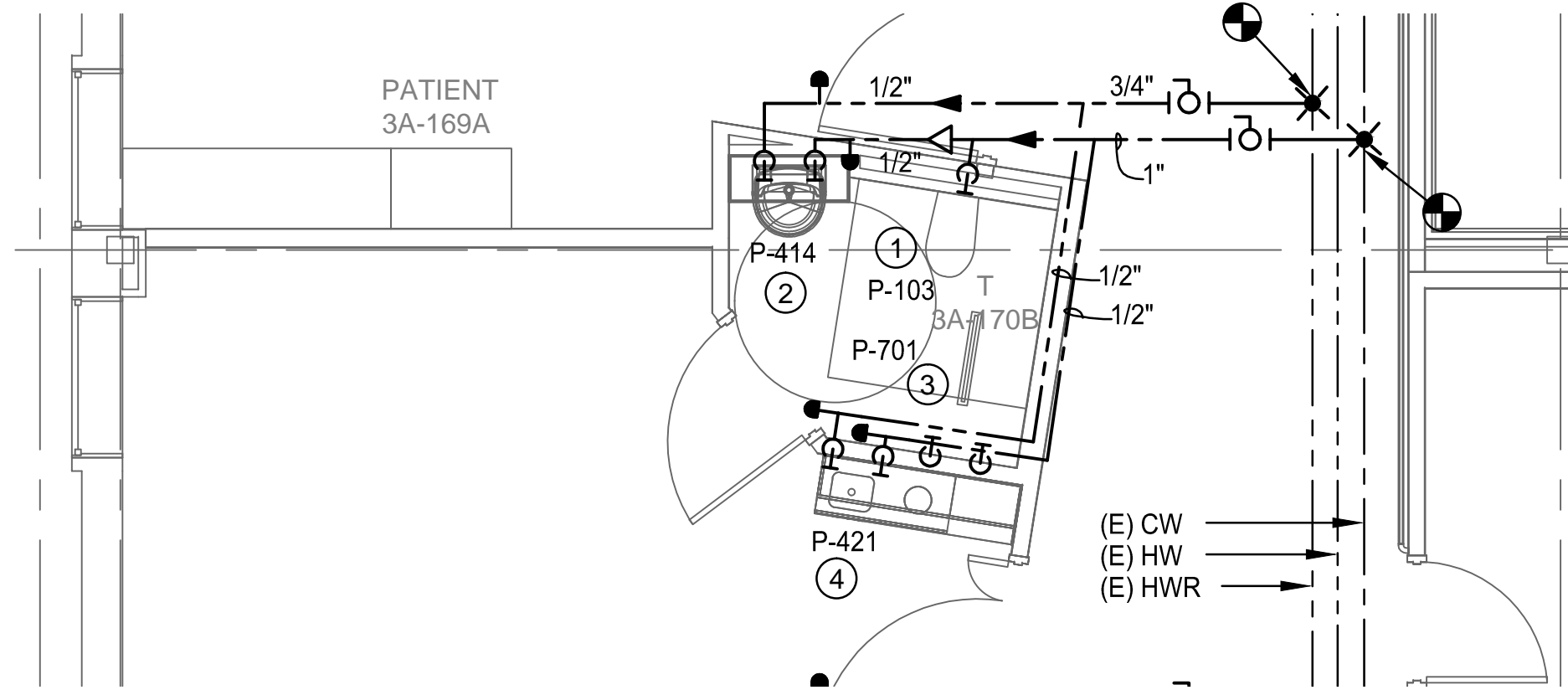
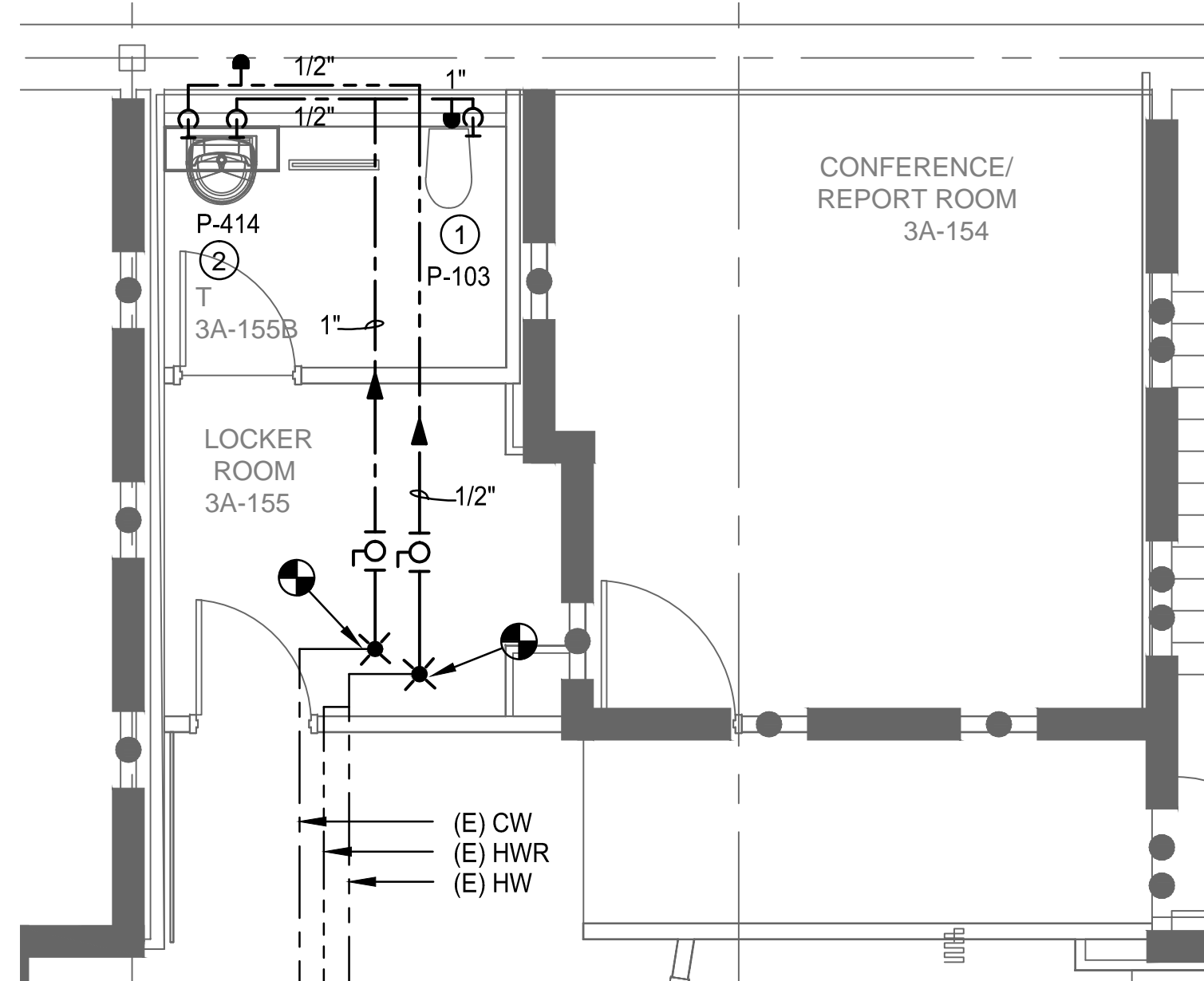


three inches = one foot
one and one half inches = one foot
one inch = one foot
one inch = one foot
three quarters inch = one foot
one half inch = one foot
one half inch = one foot
three eighths inch = one foot
one quarter inch = one foot
one eighth inch = one foot

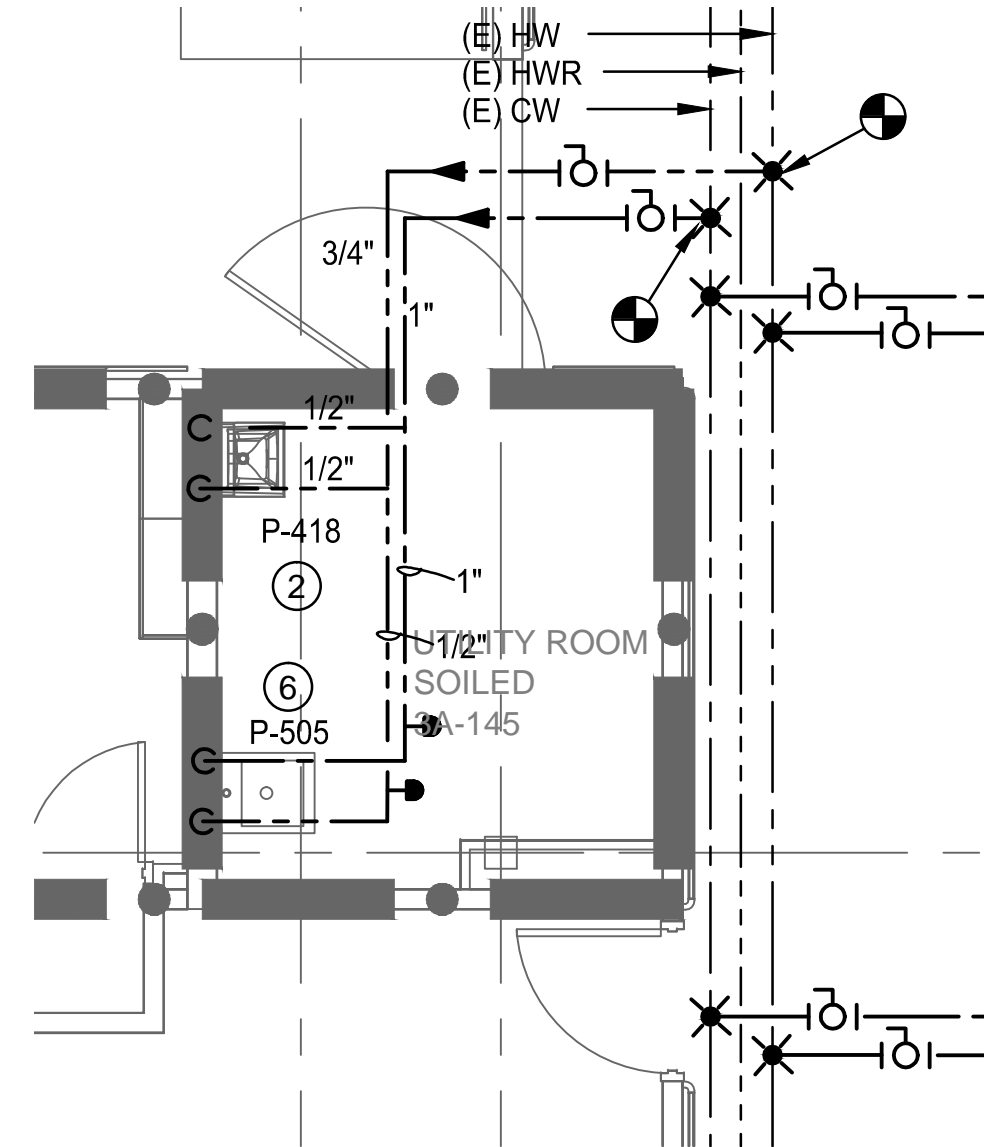


1 ENLARGED TYPICAL PATIENT TOILET - H&CW
1/4" = 1'-0"

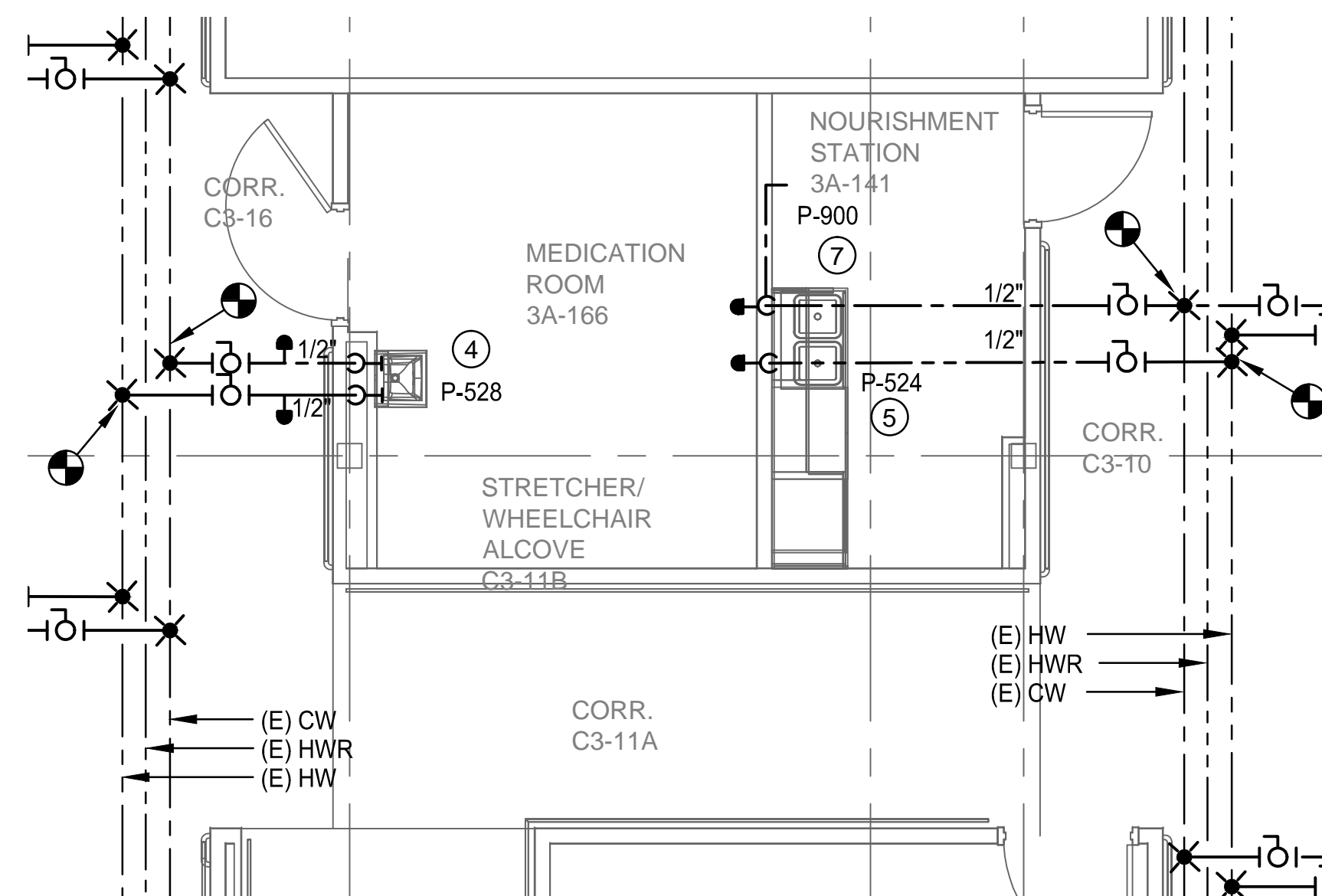
NOTE:
ACTUAL PLUMBING ROUTING VARIES FROM ROOM TO ROOM. SEE DWG. PL101 FOR TIE-IN
LOCATIONS AND CORRECT ROOM-SPECIFIC LAYOUT.



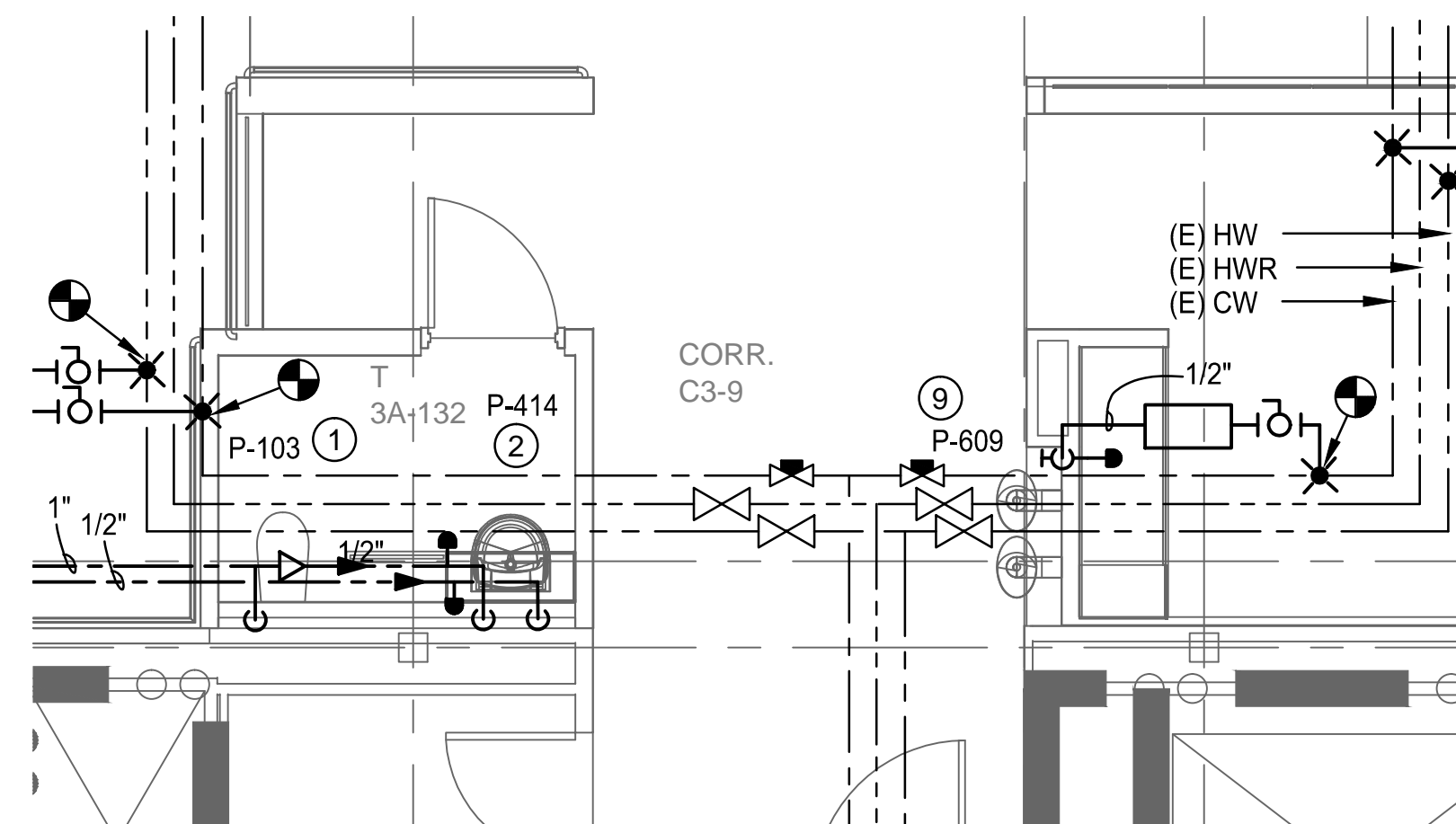
2 ENLARGED LOCKER ROOM/TOILET/CONF. ROOM - H&CW
1/4" = 1'-0"



3 ENLARGED UTILITY SOILED ROOM - H&CW
1/4" = 1'-0"



4 ENLARGED NOURISHMENT STA./MEDICATION RM. - H&CW
1/4" = 1'-0"



5 ENLARGED PUBLIC TOILET/WATER FOUNTAIN - H&CW
1/4" = 1'-0"

GENERAL PLUMBING NOTES

SEE SHEET PL001 FOR GENERAL PLUMBING NOTES.

PLUMBING SYMBOLS

SEE SHEET PL001 FOR PLUMBING SYMBOLS.

SHEET KEYNOTES

- 1 INSTALL NEW WALL-HUNG TOILET AND FLUSH VALVE ON FLOOR MOUNTED CARRIER. ROUTE NEW PLUMBING AND TIE-IN TO EXISTING CW LINE.
- 2 INSTALL NEW WALL-HUNG LAVATORY AND FAUCET. ROUTE NEW PLUMBING AND TIE-IN TO EXISTING H&CW LINES.
- 3 INSTALL NEW WALL-MOUNTED SHOWER WITH A SINGLE LEVER MIXING VALVE AND HAND-HELD SPRAY HEAD WITH FLOOR DRAIN. ROUTE NEW PLUMBING AND TIE-IN TO EXISTING H&CW LINES.
- 4 INSTALL NEW SINGLE COMPARTMENT COUNTERTOP SINK AND FAUCET. ROUTE NEW PLUMBING AND TIE-IN TO EXISTING H&CW LINES.
- 5 INSTALL NEW DOUBLE COMPARTMENT COUNTERTOP SINK AND FAUCET. ROUTE NEW PLUMBING AND TIE-IN TO EXISTING H&CW LINES.
- 6 INSTALL CLINIC SERVICE SINK WITH BED PAN WASHER AND FAUCET. FAUCET WILL REQUIRE 1/2" CW AND HW SUPPLY, FLUSH VALVE WILL REQUIRE 1" CW SUPPLY. ROUTE NEW PLUMBING AND TIE-IN TO EXISTING H&CW LINES.
- 7 INSTALL NEW REFRIGERATOR ICE MAKER OUTLET BOX. ROUTE NEW PLUMBING AND TIE-IN TO EXISTING CW LINE.
- 8 INSTALL NEW SERVICE SINK AND FAUCET. ROUTE NEW PLUMBING AND TIE-IN TO EXISTING H&CW LINES.
- 9 INSTALL NEW DRINKING FOUNTAIN WITH REMOTE WATER COOLER INSTALLED ABOVE CEILING. ROUTE NEW PLUMBING AND TIE-IN TO EXISTING CW LINE.

4' 0' 4' 8'
1/4"=1'-0"

CONSTRUCTION DOCUMENT SUBMISSION FULLY SPRINKLERED

CONSULTANTS:		ARCHITECT/ENGINEERS:		Drawing Title ENLARGED PLUMBING PLANS - DOMESTIC WATER	Project Title RENOVATE MEDICAL SURGICAL UNIT	Project Number 544-13-102	OFFICE OF CONSTRUCTION AND FACILITIES MANAGEMENT Department of Veterans Affairs
				Approved: Project Director	Location W.J. BRYAN DORN VAMC; COLUMBIA, SC	Building Number 100	
1 ADDENDUM #1 Revisions: Date		6/4/2014 Date			Date 05-16-2014	Checked CD	
					Drawn JL	Drawing Number PL401	Dwg. 41 of 78