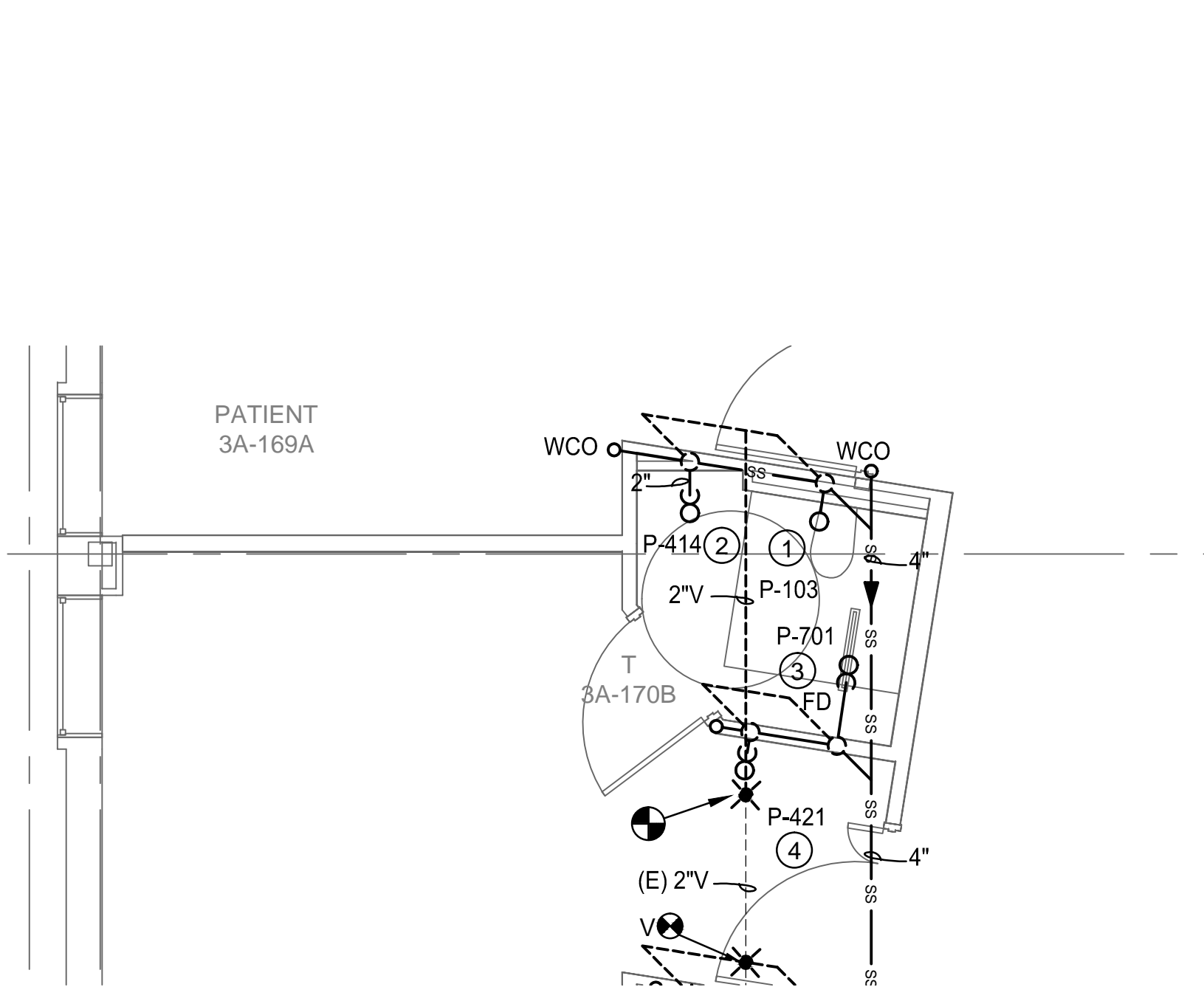
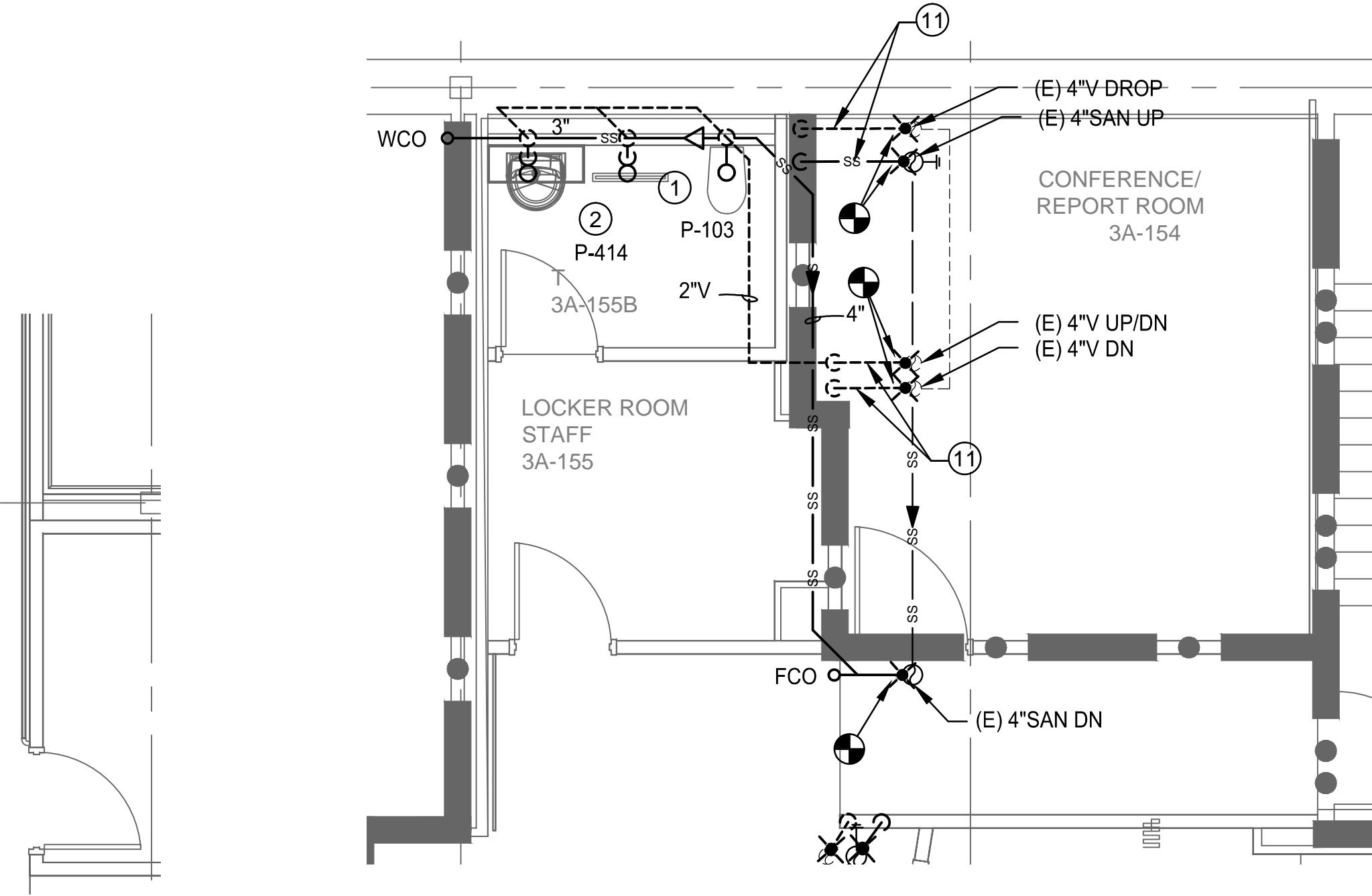


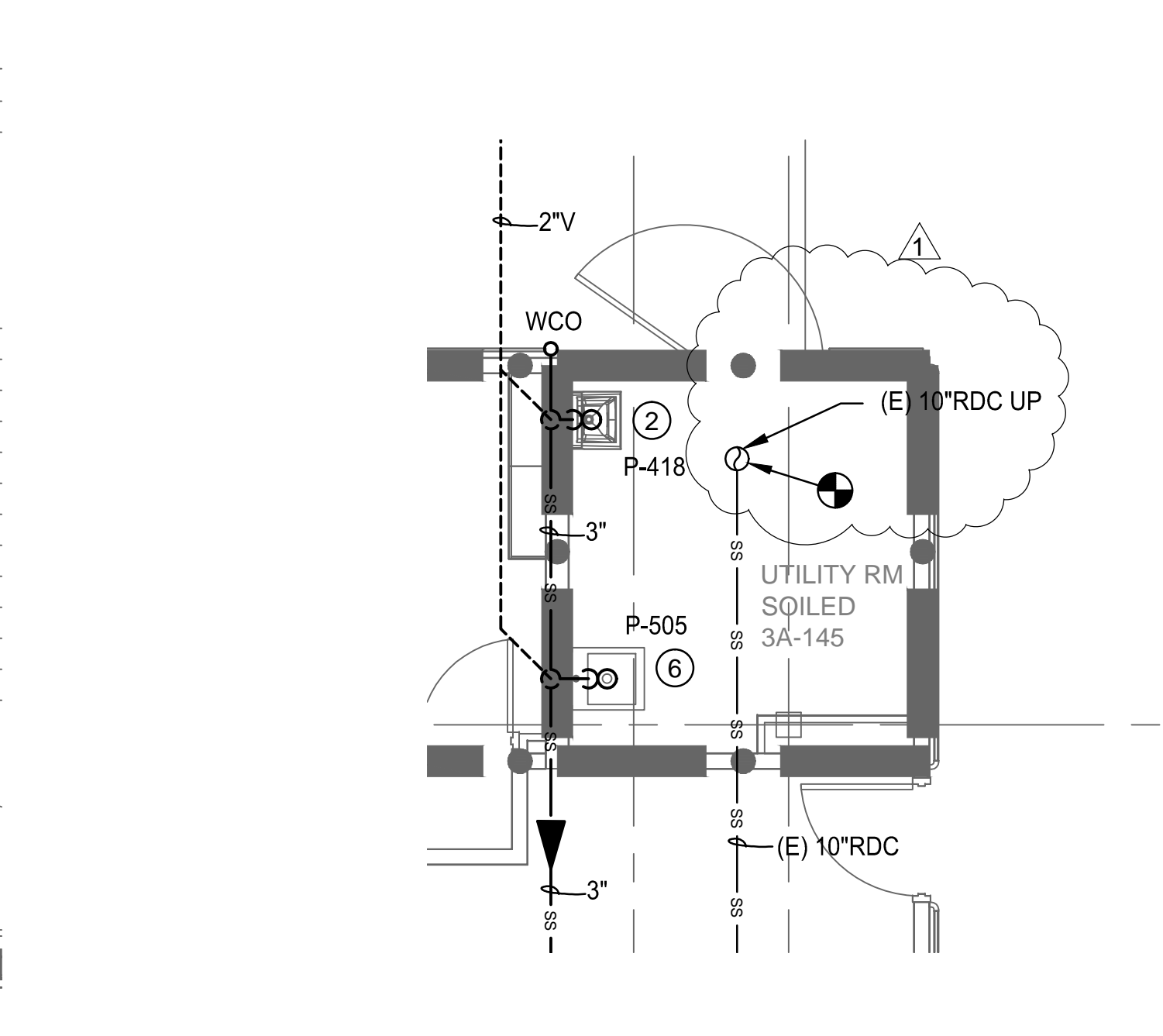
three inches = one foot
one and one half inches = one foot
one inch = one foot
three quarters inch = one foot
one half inch = one foot
three eighths inch = one foot
one quarter inch = one foot
one eighth inch = one foot



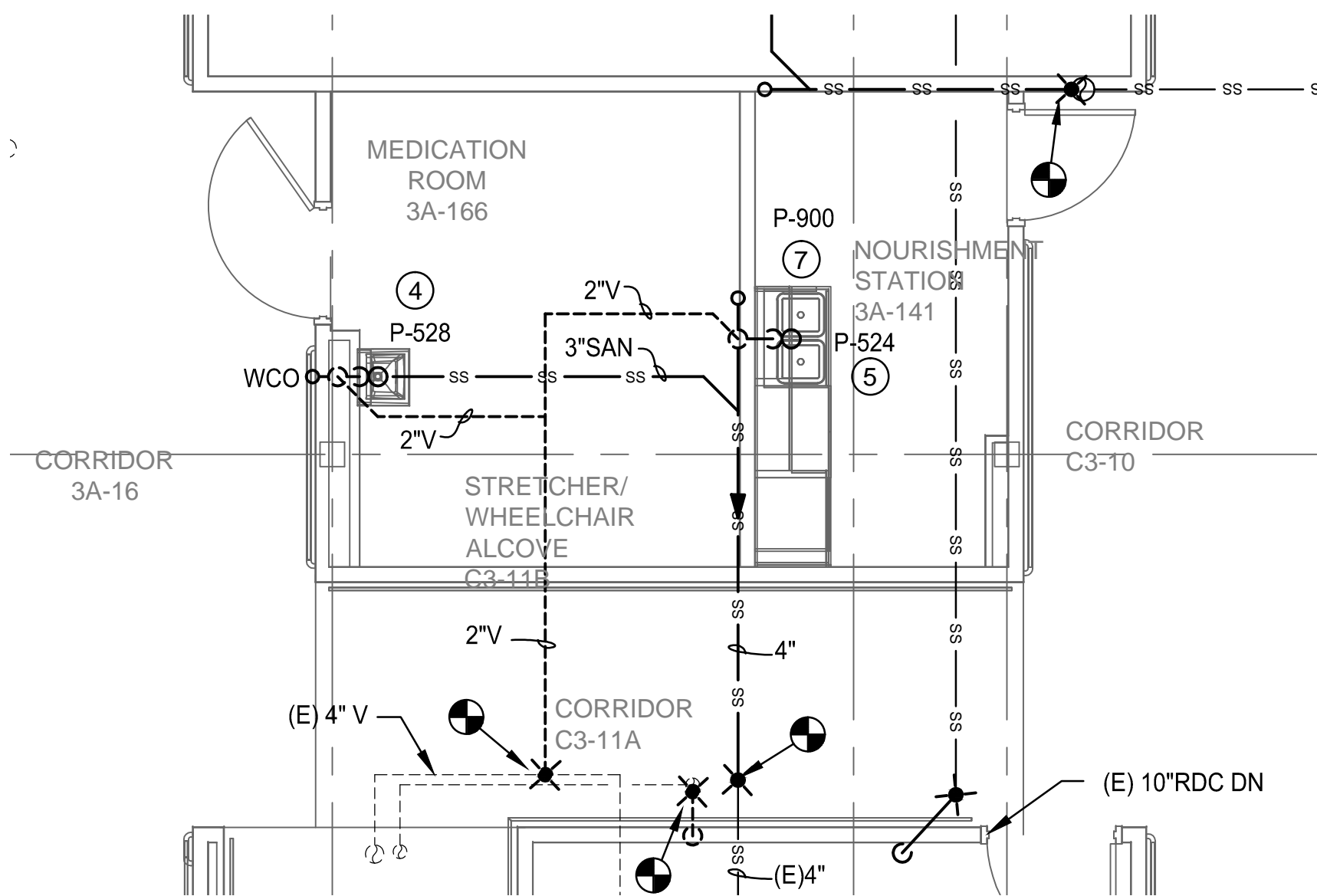
1 ENLARGD TYPICAL PATIENT TOILET - SAN, W & V
1/4" = 1'-0"
NOTE 1



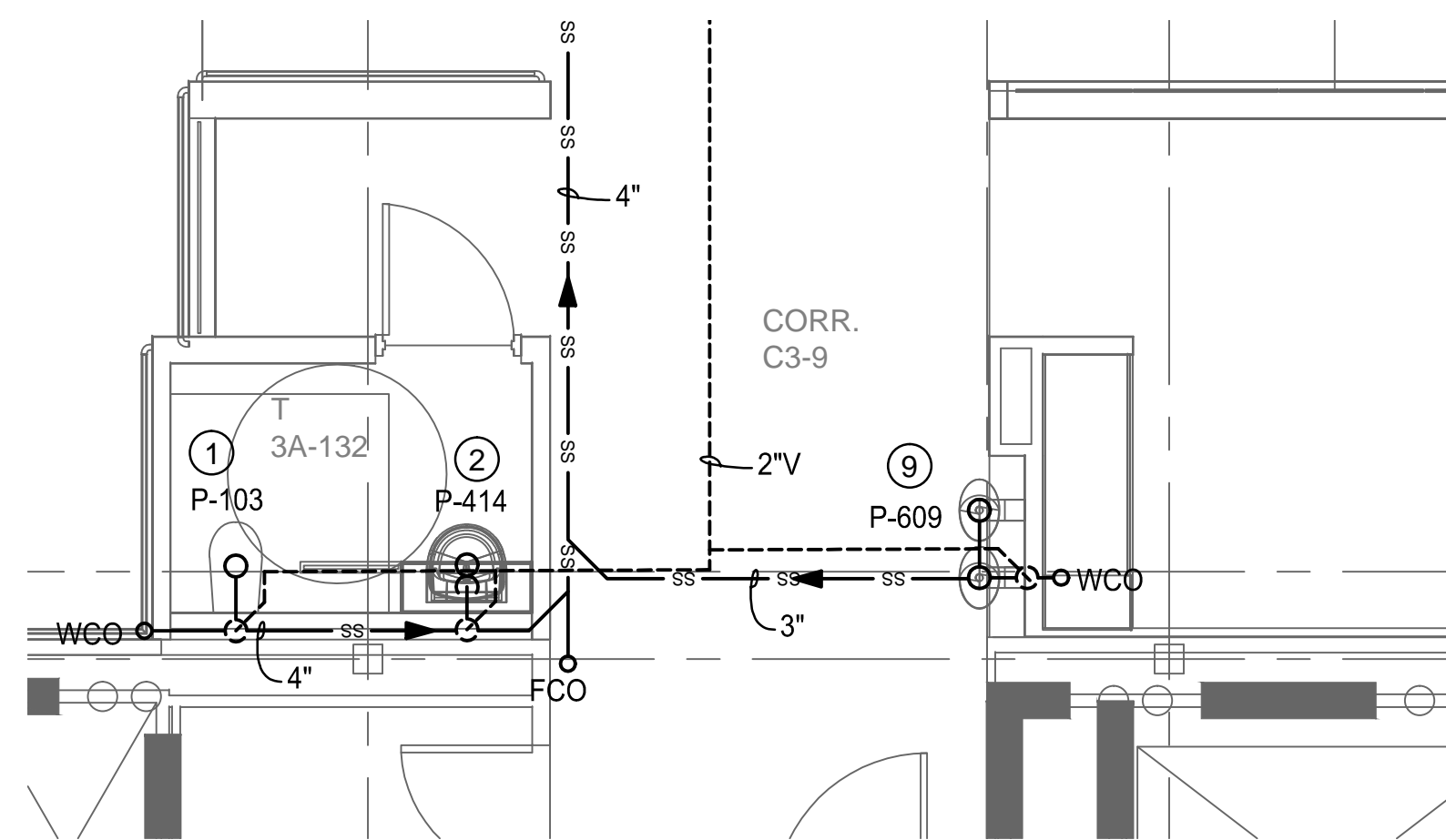
2 ENLARGED LOCKER ROOM/TOILET/CONF. ROOM - SAN, W & V
1/4" = 1'-0"



3 ENLARGED UTILITY ROOM SOILED - SAN, W & V
1/4" = 1'-0"



4 ENLARGED NOURISHMENT STA./MEDICATION RM. - SAN, W & V
1/4" = 1'-0"



5 ENLARGED PUBLIC TOILET/WATER FOUNTAIN - SAN, W & V
1/4" = 1'-0"

GENERAL PLUMBING NOTES

FOR GENERAL PLUMBING NOTES, SEE SHEET PL001.

LEGEND

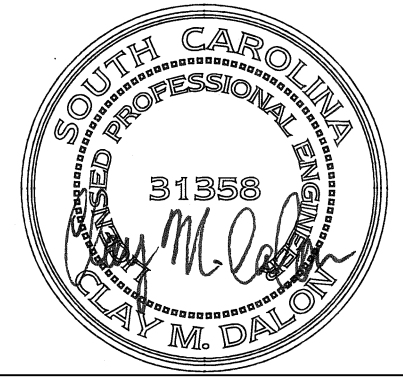
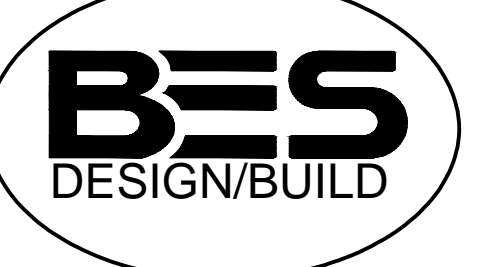

FOR LEGEND, SEE DWG. PL001.

SHEET KEYNOTES

- 1 INSTALL NEW WALL-HUNG TOILET AND FLUSH VALVE ON FLOOR MOUNTED CARRIER. ROUTE NEW PLUMBING AND TIE-IN TO EXISTING CW, SAN & V LINES.
- 2 INSTALL NEW WALL-HUNG LAVATORY AND FAUCET. ROUTE NEW PLUMBING AND TIE-IN TO EXISTING CW, HW, SAN & V LINES.
- 3 INSTALL NEW WALL-MOUNTED SHOWER WITH A SINGLE LEVER MIXING VALVE AND HAND-HELD SPRAY HEAD WITH FLOOR DRAIN. ROUTE NEW PLUMBING AND TIE-IN TO EXISTING CW, HW, SAN & V LINES.
- 4 INSTALL NEW SINGLE COMPARTMENT COUNTERTOP SINK AND FAUCET. ROUTE NEW PLUMBING AND TIE-IN TO EXISTING CW, HW, SAN & V LINES.
- 5 INSTALL NEW DOUBLE COMPARTMENT COUNTERTOP SINK AND FAUCET. ROUTE NEW PLUMBING AND TIE-IN TO EXISTING CW, HW, SAN & V LINES.
- 6 INSTALL CLINIC SERVICE SINK WITH BED PAN WASHER AND FAUCET. FAUCET WILL REQUIRE 1/2" CW AND HW SUPPLY, FLUSH VALVE WILL REQUIRE 1" CW SUPPLY. ROUTE NEW PLUMBING AND TIE-IN TO EXISTING CW, HW, SAN & V LINES.
- 7 INSTALL NEW REFRIGERATOR ICE MAKER OUTLET BOX. ROUTE NEW PLUMBING AND TIE-IN TO EXISTING CW LINE.
- 8 INSTALL NEW SERVICE SINK AND FAUCET. ROUTE NEW PLUMBING AND TIE-IN TO EXISTING CW, HW, SAN & V LINES.
- 9 INSTALL NEW DRINKING FOUNTAIN. ROUTE NEW PLUMBING AND TIE-IN TO EXISTING CW, SAN & V LINES.
- 10 ACTUAL PLUMBING ROUTING VARIES FROM ROOM TO ROOM. SEE DWG. PL102 FOR TIE-IN LOCATIONS AND CORRECT ROOM-SPECIFIC LAYOUT.
- 11 OFFSET EXISTING SAN AND VENT LINES APPROXIMATELY AS SHOWN TO CORRECTLY ALIGN EXISTING VERTICAL DROPS WITH NEW WALLS ON 3RD FLOOR.

4' 0' 4' 8'
1/4"=1'-0"

CONSTRUCTION DOCUMENT SUBMISSION FULLY SPRINKLERED

CONSULTANTS:		ARCHITECT/ENGINEERS:		Drawing Title ENLARGED PLUMBING PLANS - SANITARY, WASTE AND VENT		Project Title RENOVATE MEDICAL SURGICAL UNIT		Project Number 544-13-102 Building Number 100		OFFICE OF CONSTRUCTION AND FACILITIES MANAGEMENT	
Revisions:				 BES DESIGN/BUILD, LLC 766 Middle St, Fairhope, AL 36532 Phone: 251.990.5778 Fax: 251.990.3716		Location W.J. BRYAN DORN VAMC; COLUMBIA, SC		Drawing Number PL402 Dwg. 42 of 78			
1 ADDENDUM #1						Date 05-16-2014		Checked CD		Drawn JL	