

6/26/2014 11:23:00 AM C:\Newit Local\15500_VA_PH_Local_zfolor.rvt

three inches = one foot

one and one-half inches = one foot

one inch = one foot

three-quarters inch = one foot

one-half inch = one foot

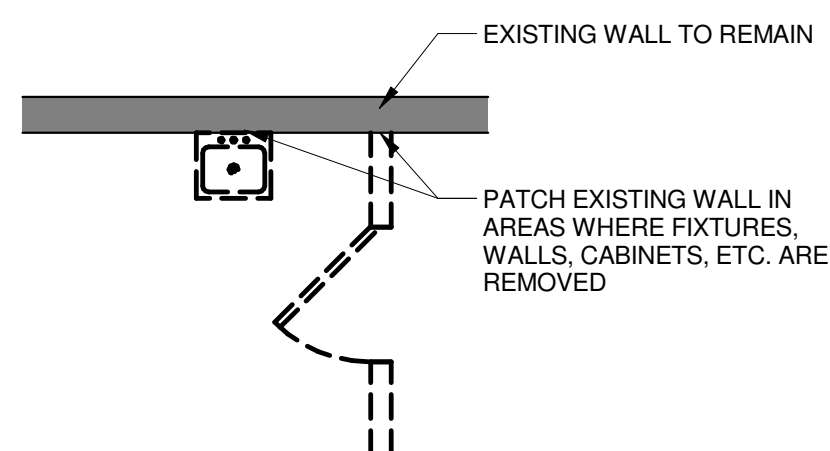
three-eighths inch = one foot

one-eighth inch = one foot

DEMOLITION GENERAL NOTES

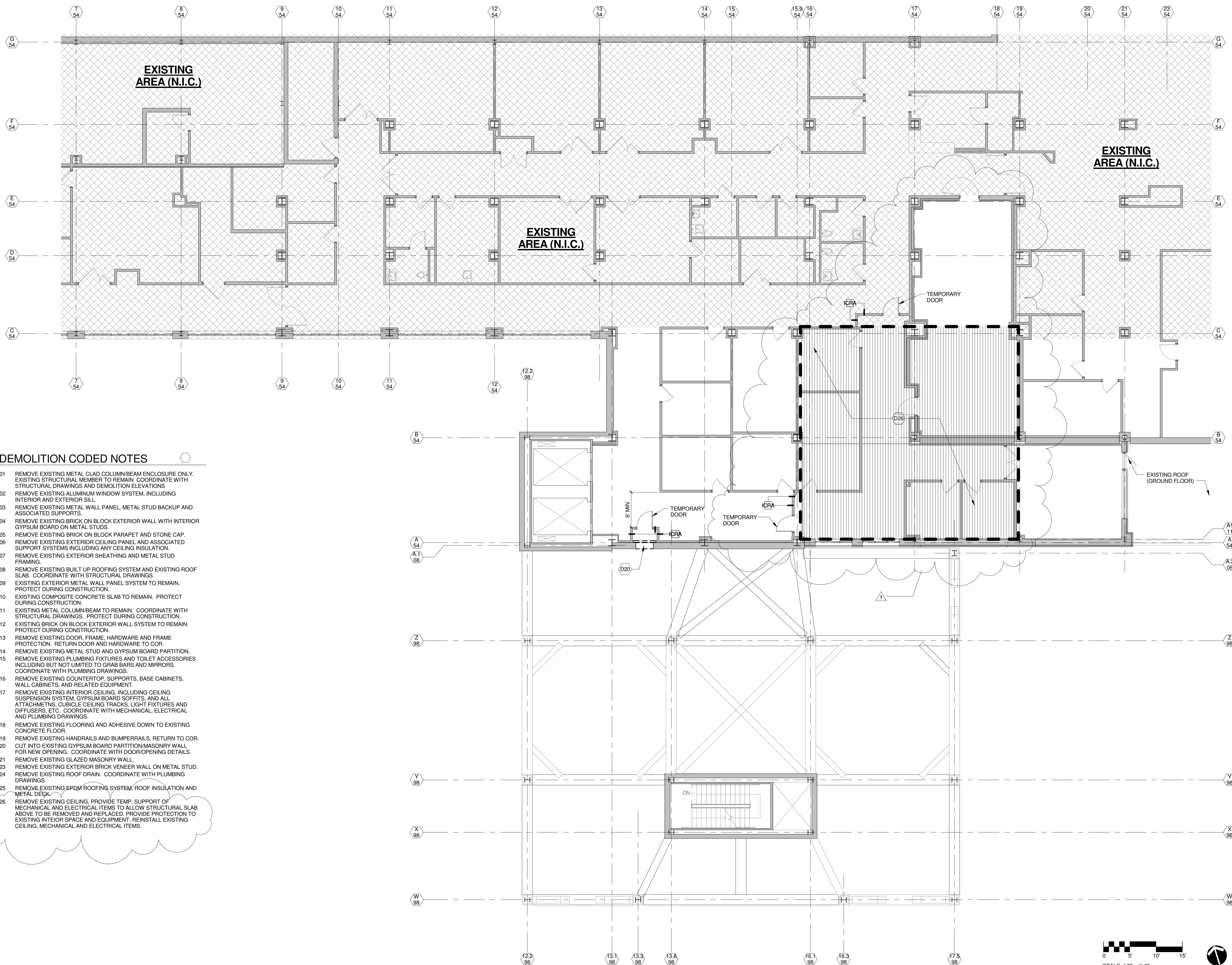
- EXCEPT FOR ITEMS OR MATERIALS INDICATED TO BE REUSED, SALVAGE, REINSTALLED OR OTHERWISE INDICATED TO REMAIN THE OWNER'S PROPERTY, DEMOLISHED MATERIALS SHALL BECOME THE CONTRACTOR'S PROPERTY AND SHALL BE REMOVED FROM THE SITE WITH FURTHER DISPOSITION AT THE CONTRACTOR'S OPTION.
- DISPOSITION OF MECHANICAL, PLUMBING, GAS, AIR, VAC, PIPING, FIRE PROTECTION AND ELECTRICAL ITEMS ENCOUNTERED IN AREAS TO BE DEMOLISHED ARE DESCRIBED IN RESPECTIVE DRAWINGS AND SPECIFICATIONS. CONTRACTOR SHALL COORDINATE WORK WITH ALL TRADES.
- WALLS, DOORS, FIXTURES, ETC. TO BE REMOVED ARE SHOWN DASHED. SELECTED ITEMS ARE LABELED TO IDENTIFY THE ITEM TO BE REMOVED.
- LOOSE EQUIPMENT OR FURNITURE NOT IDENTIFIED FOR REMOVAL, RE-USE OR RELOCATION IS TO BE TURNED OVER TO OWNER.
- INSTALL SECURE TEMPORARY DUST PARTITIONS TO SEPARATE DEMOLITION & CONSTRUCTION AREAS FROM OCCUPIED SPACE.
- REFER TO STRUCTURAL, MECHANICAL AND ELECTRICAL DRAWINGS FOR ADDITIONAL DEMOLITION ITEMS AND REQUIREMENTS.
- REMOVE EXISTING FLOOR AND BASE MATERIALS IN AREAS SCHEDULED TO RECEIVE NEW FLOORING, PREP EXISTING FLOOR TO RECEIVE NEW FINISH.
- REMOVE EXISTING CEILING MATERIALS AND SUPPORT SYSTEM IN AREAS SCHEDULED TO RECEIVE NEW CEILING.
- DEMOLITION CONTRACTOR TO VERIFY LOCATION OF ALL UNDERGROUND UTILITIES. NOTIFY OWNER AND ARCHITECT OF ANY DISCREPANCIES.
- REMOVE ALL DEBRIS, RUBBISH, AND OTHER MATERIALS RESULTING FROM DEMOLITION OPERATIONS IN ACCORDANCE WITH LOCAL, STATE, AND FEDERAL LAWS FROM THE PROJECT SITE. BURNING OF REMOVED MATERIALS IS NOT PERMITTED ON PROJECT SITE.
- COORDINATE WITH OWNER FOR SHUTOFF, CAPPING AND CONTINUATION OF UTILITY SERVICES AS REQUIRED. DO NOT INTERRUPT EXISTING UTILITIES SERVING OCCUPIED OR FACILITIES USED.
- MAKE PORTABLE FIRE EXTINGUISHER AVAILABLE DURING DEMOLITION PROCESS.
- USE OF EXPLOSIVES IS NOT PERMITTED.
- COMPLY WITH ALL GOVERNING REGULATIONS PERTAINING TO ENVIRONMENTAL PROTECTION (FEDERAL, STATE AND LOCAL).
- CONTRACTOR TO PATCH AND REPAIR ALL EXISTING FIREPROOFING AFTER INSTALLATION OF NEW WORK AS REQUIRED TO MAINTAIN REQUIRED FIRE RATING. CONTRACTOR TO USE MATERIALS COMPATIBLE WITH EXISTING FIREPROOFING FOR PATCH WORK.
- REMOVE ALL WALL PROTECTION, FASTENERS AND ALL WALL ATTACHMENTS ASSOCIATED WITH REMOVAL OF WALLS TO BE DEMOLISHED.

DEMOLITION PLAN LEGEND



DEMOLITION CODED NOTES

- REMOVE EXISTING METAL CLAD COLUMN/BEAM ENCLOSURE ONLY. EXISTING STRUCTURAL MEMBER TO REMAIN. COORDINATE WITH STRUCTURAL DRAWINGS AND DEMOLITION ELEVATIONS.
- REMOVE EXISTING ALUMINUM WINDOW SYSTEM, INCLUDING INTERIOR AND EXTERIOR SILL.
- REMOVE EXISTING METAL WALL PANEL, METAL STUD BACKUP AND ASSOCIATED SUPPORTS.
- REMOVE EXISTING BRICK ON BLOCK EXTERIOR WALL WITH INTERIOR GYPSUM BOARD ON METAL STUDS.
- REMOVE EXISTING BRICK ON BLOCK PARAPET AND STONE CAP.
- REMOVE EXISTING EXTERIOR CEILING PANEL AND ASSOCIATED SUPPORT SYSTEMS INCLUDING ANY CEILING INSULATION.
- REMOVE EXISTING EXTERIOR SHEATHING AND METAL STUD FRAMING.
- REMOVE EXISTING BUILT UP ROOFING SYSTEM AND EXISTING ROOF SLAB. COORDINATE WITH STRUCTURAL DRAWINGS.
- EXISTING EXTERIOR METAL WALL PANEL SYSTEM TO REMAIN. PROTECT DURING CONSTRUCTION.
- EXISTING COMPOSITE CONCRETE SLAB TO REMAIN. PROTECT DURING CONSTRUCTION.
- EXISTING METAL COLUMN/BEAM TO REMAIN. COORDINATE WITH STRUCTURAL DRAWINGS. PROTECT DURING CONSTRUCTION.
- EXISTING BRICK ON BLOCK EXTERIOR WALL SYSTEM TO REMAIN. PROTECT DURING CONSTRUCTION.
- REMOVE EXISTING DOOR, FRAME, HARDWARE AND FRAME PROTECTION. RETURN DOOR AND HARDWARE TO COR.
- REMOVE EXISTING METAL STUD AND GYPSUM BOARD PARTITION.
- REMOVE EXISTING PLUMBING FIXTURES AND TOILET ACCESSORIES INCLUDING BUT NOT LIMITED TO GRAB BARS AND MIRRORS. COORDINATE WITH PLUMBING DRAWINGS.
- REMOVE EXISTING COUNTERTOP, SUPPORTS, BASE CABINETS, WALL CABINETS, AND RELATED EQUIPMENT.
- REMOVE EXISTING INTERIOR CEILING, INCLUDING CEILING SUSPENSION SYSTEM, GYPSUM BOARD SOFFITS, AND ALL ATTACHMENTS, CURBCE CEILING TRACKS, LIGHT FIXTURES AND DIFFUSERS, ETC. COORDINATE WITH MECHANICAL, ELECTRICAL AND PLUMBING DRAWINGS.
- REMOVE EXISTING FLOORING AND ADHESIVE DOWN TO EXISTING CONCRETE FLOOR.
- REMOVE EXISTING HANDRAILS AND BUMPERRAILS, RETURN TO COR. CUT INTO EXISTING GYPSUM BOARD PARTITION/MASONRY WALL FOR NEW OPENING. COORDINATE WITH DOOR/OPENING DETAILS.
- REMOVE EXISTING GLAZED MASONRY WALL.
- REMOVE EXISTING EXTERIOR BRICK VENEER WALL ON METAL STUD.
- REMOVE EXISTING ROOF DRAIN. COORDINATE WITH PLUMBING DRAWINGS.
- REMOVE EXISTING EPDM ROOFING SYSTEM, ROOF INSULATION AND METAL DECK.
- REMOVE EXISTING CEILING, PROVIDE TEMP. SUPPORT OF MECHANICAL AND ELECTRICAL ITEMS TO ALLOW STRUCTURAL SLAB ABOVE TO BE REMOVED AND REPLACED. PROVIDE PROTECTION TO EXISTING INTERIOR SPACE AND EQUIPMENT. REINSTALL EXISTING CEILING, MECHANICAL AND ELECTRICAL ITEMS.



1 PARTIAL FIRST FLOOR DEMOLITION PLAN - PHASE IA
A1-1 SCALE: 1/8" = 1'-0"

CONSTRUCTION BID DOCUMENTS FULLY SPRINKLERED

CONSULTANTS:		ARCHITECTS/ENGINEERS:		ARCHITECTURAL PROJECT # 18500		Drawing Title PARTIAL FIRST FLOOR DEMOLITION PLAN - PHASE IA		Project Title VA Pittsburgh Healthcare System UD, EXPAND MEDICAL AND SURGICAL CLINICS		Project Number 646-372 Building Number		Office of Construction and Facilities Management	
ADDENDUM NO. 1 CONSTRUCTION BID DOCUMENTS Revisions		CBLH DESIGN 7850 Freeway Circle 440.243.2000 t		Architecture Planning Interior Design Cleveland, OH 44130 440.243.3305 f		Approved: Project Director		Location UNIVERSITY DRIVE DIVISION		Drawing Number A1-1 Dwg. 7 of 133		Department of Veterans Affairs	
05/30/2014 Date		2ND FLOOR PLAN KEY PLAN						Date 05/06/2014		Checked JJV		Drawn BTH	