

6/26/2014 11:23:01 AM C:\Newit Local\15500_VA PH_Local_zfolor.vrf

three inches = one foot

one and one-half inches = one foot

one inch = one foot

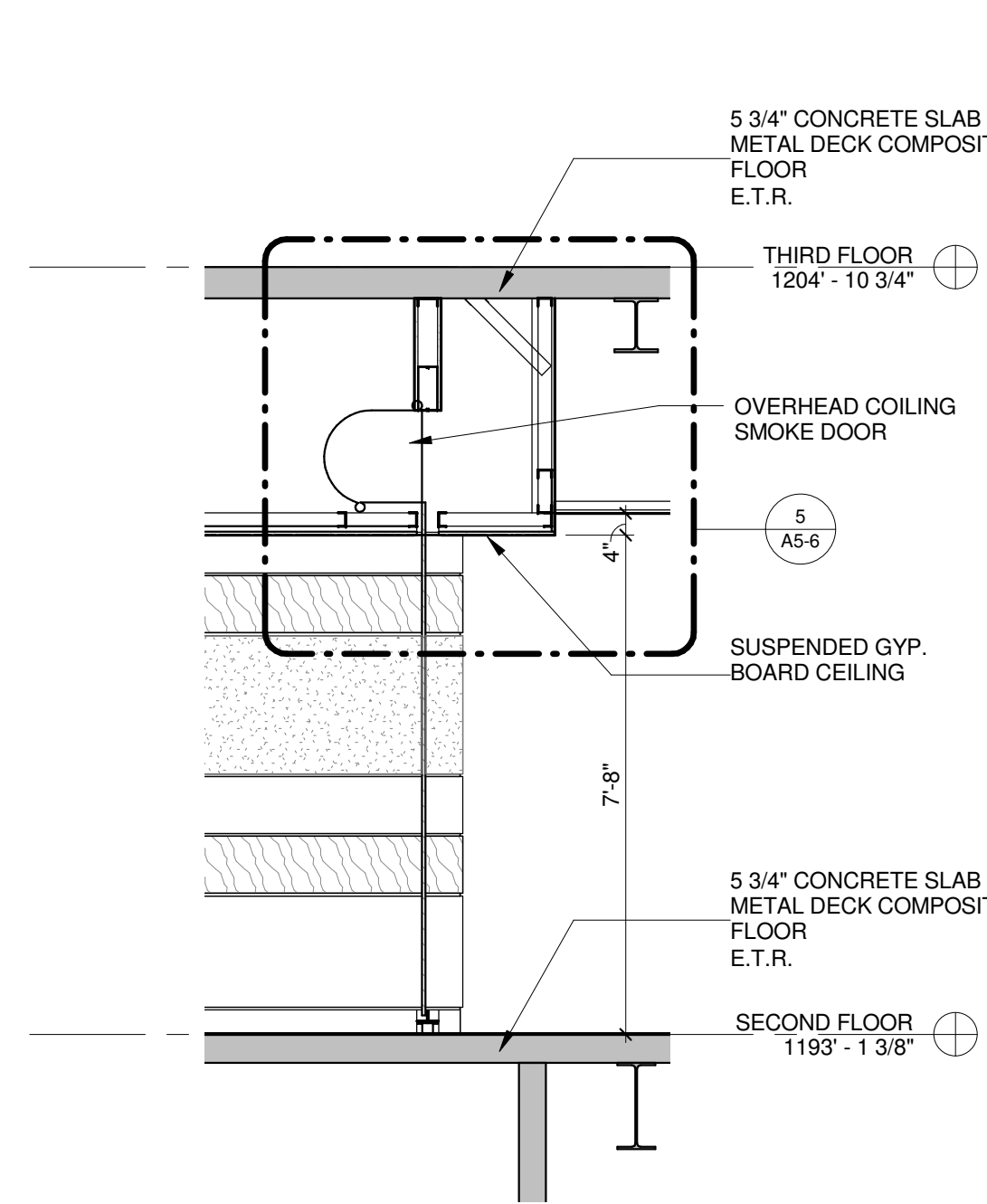
three-quarters inch = one foot

one-half inch = one foot

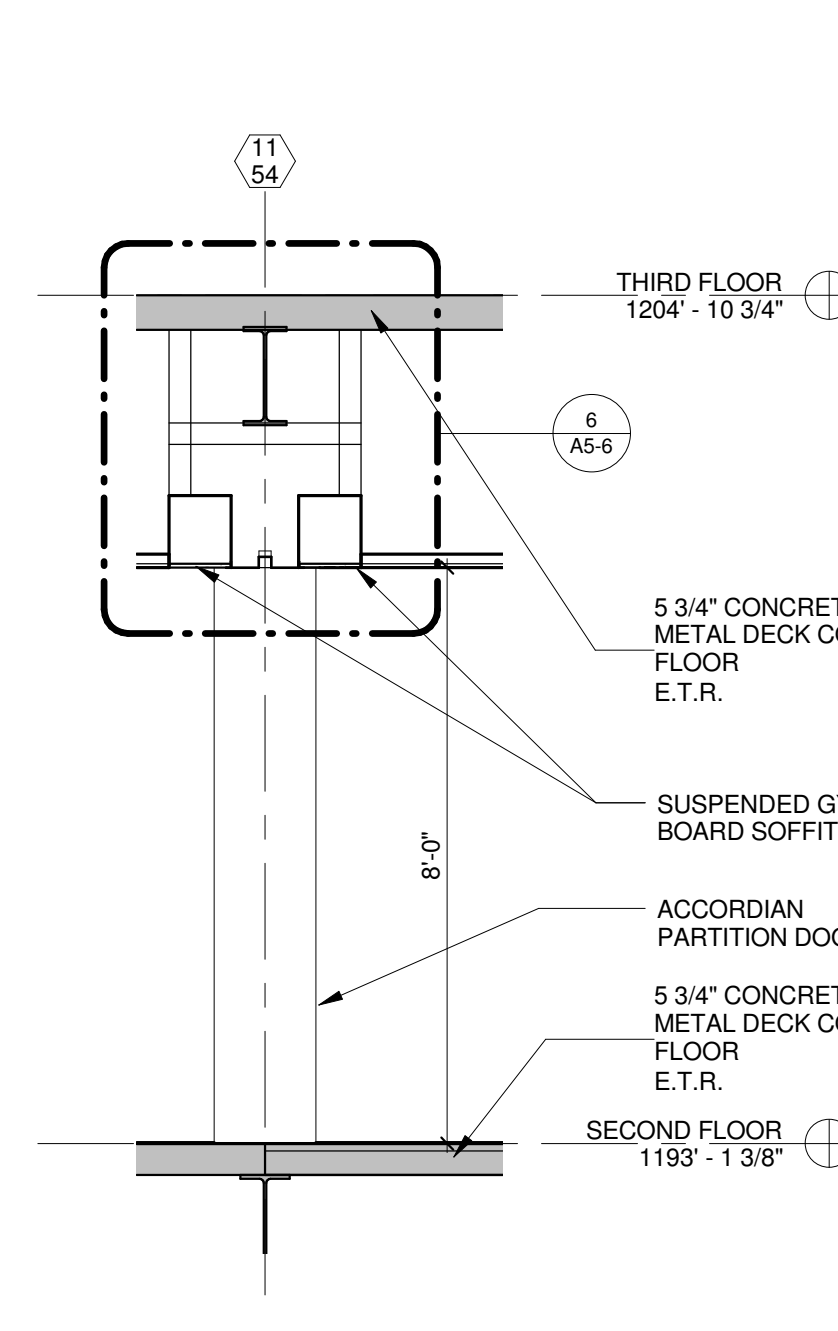
three-eighths inch = one foot

one-quarter inch = one foot

one-eighth inch = one foot

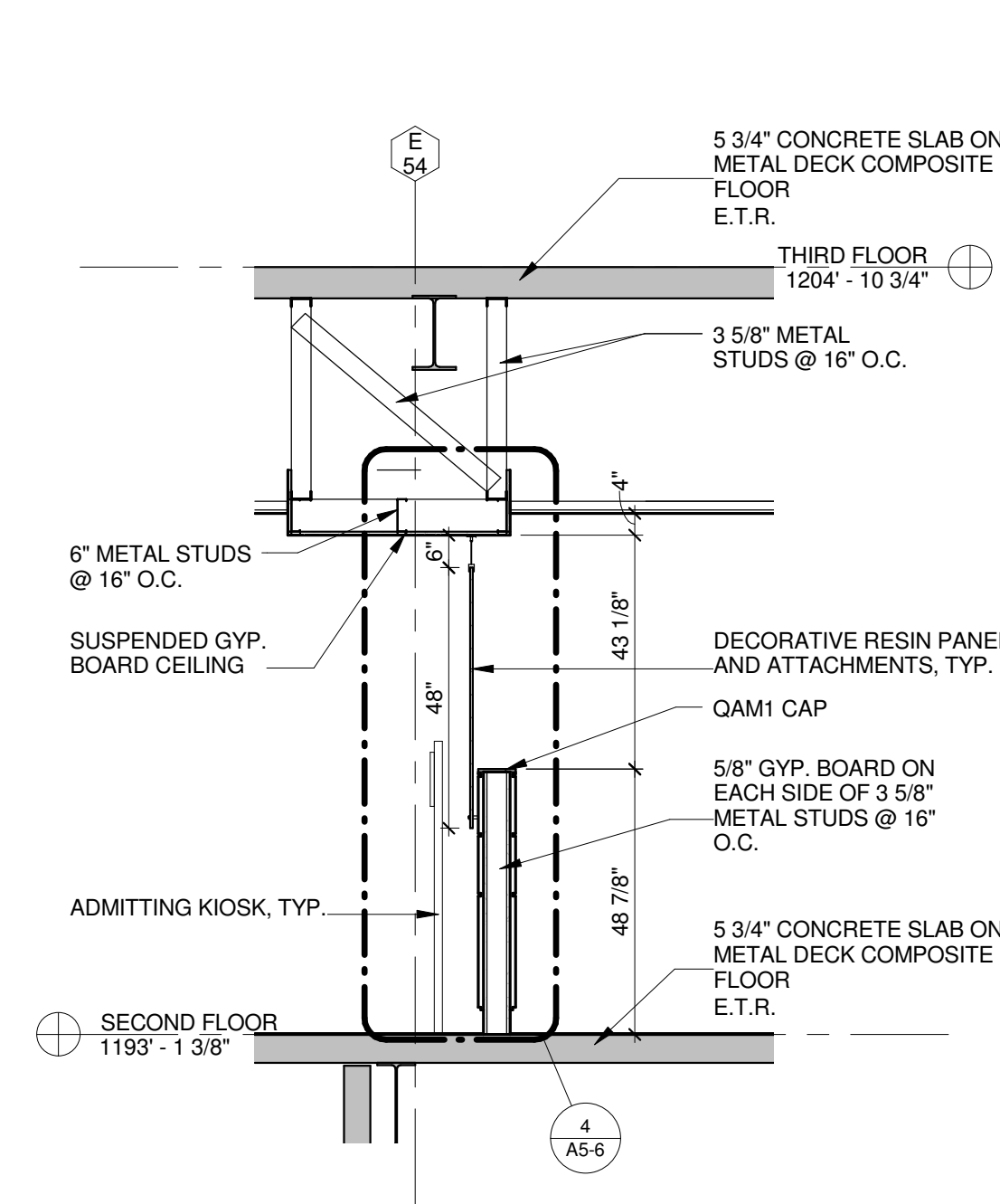


1 WALL SECTION
A5-6 SCALE: 3/8" = 1'-0"

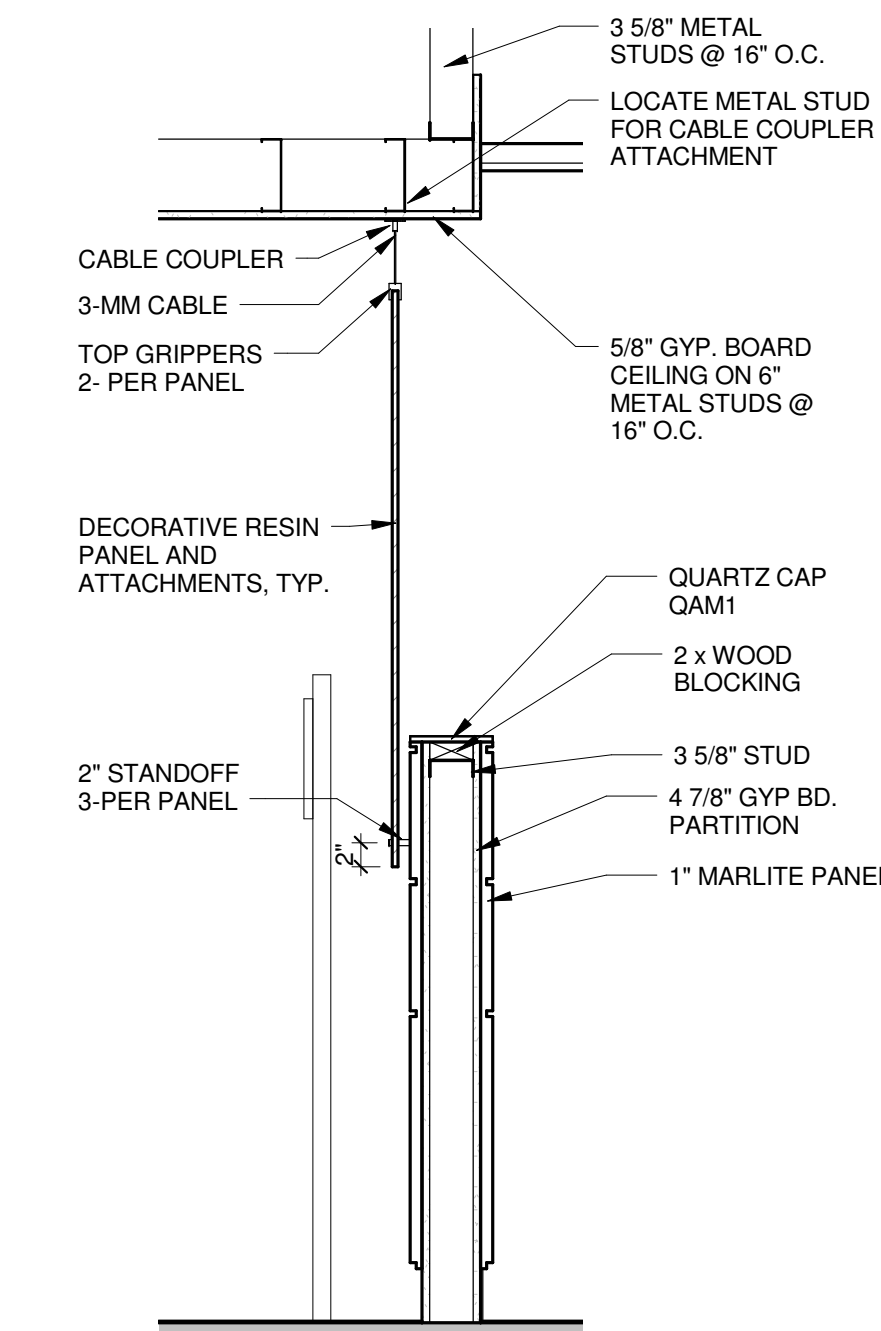


2 WALL SECTION
A5-6 SCALE: 3/8" = 1'-0"

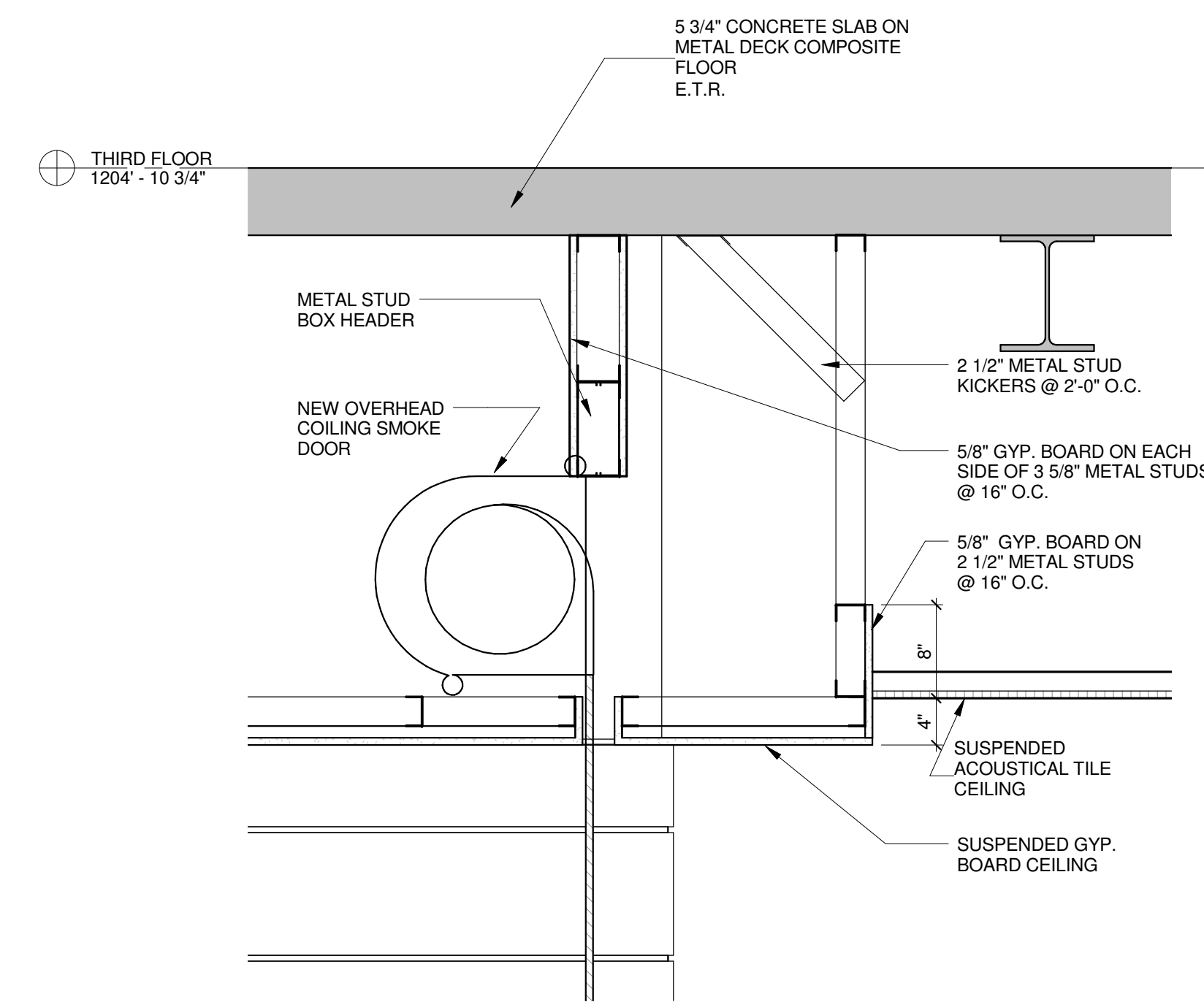
NOTE:
DEDUCT ALTERNATE NO. 1



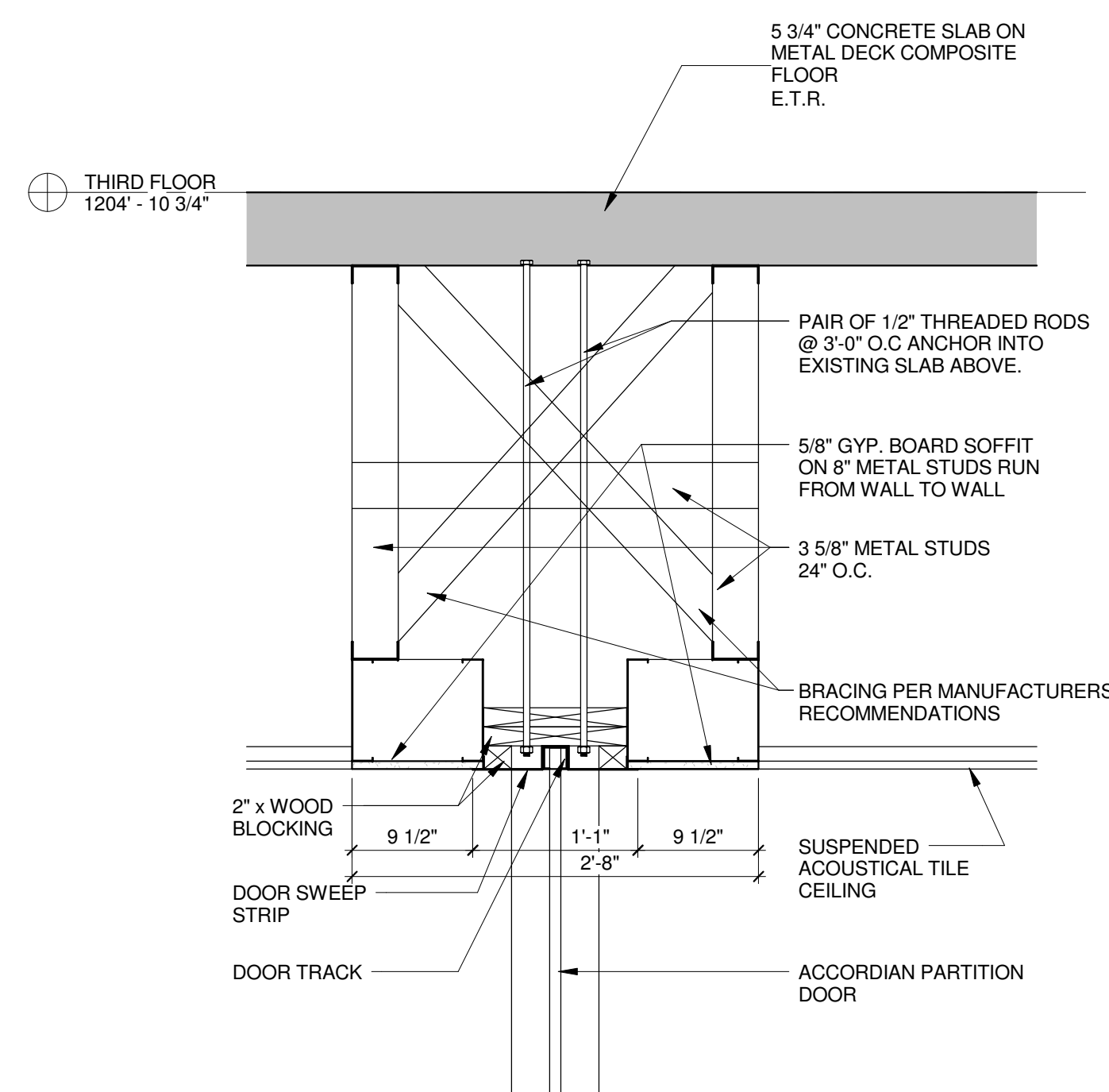
3 WALL SECTION
A5-6 SCALE: 3/8" = 1'-0"



4 DETAIL
A5-6 SCALE: 3/4" = 1'-0"

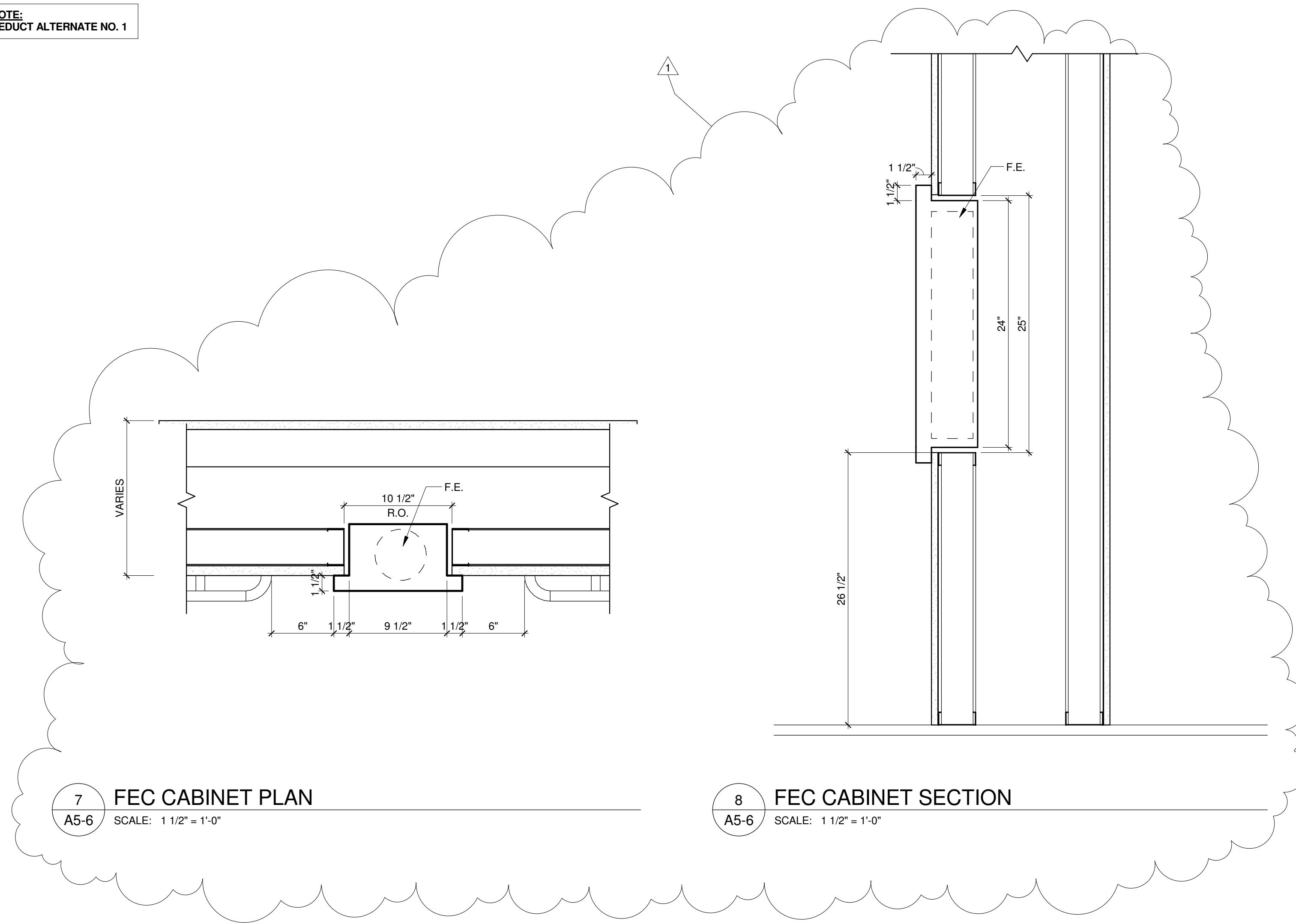


5 DETAIL
A5-6 SCALE: 1" = 1'-0"



6 DETAIL
A5-6 SCALE: 1" = 1'-0"

NOTE:
DEDUCT ALTERNATE NO. 1

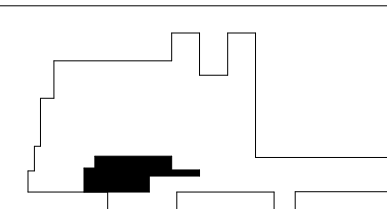


7 FEC CABINET PLAN
A5-6 SCALE: 1 1/2" = 1'-0"

8 FEC CABINET SECTION
A5-6 SCALE: 1 1/2" = 1'-0"

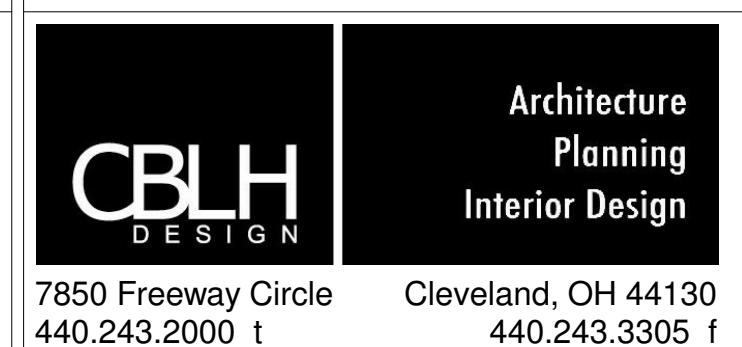
ALL STRUCTURAL STEEL SHALL REQUIRE
FIRE PROOFING. SEE COVER SHEET FOR
MORE INFORMATION.

CONSULTANTS:



2ND FLOOR PLAN
KEY PLAN

ARCHITECTS/ENGINEERS:



ARCHITECTURAL PROJECT # 18500

Drawing Title
WALL SECTIONS - PHASE IB

Approved: Project Director

Project Title
VA Pittsburgh Healthcare System
UD, EXPAND MEDICAL AND
SURGICAL CLINICS

Location
UNIVERSITY DRIVE DIVISION

Date
05/06/2014

Checked
JJV

Drawn
ZF

Project Number
646-372
Building Number

Drawing Number
A5-6
Dwg. 31 of 133

Office of
Construction
and Facilities
Management

