

Addenda: Intestinal Space Clarifications

Refer to General Addendum #1 Conditions

1. The medical gas lines shown on drawings PG-02 and PG-03 of the Medical Surgical Project Documents are pre-existing and serve the Ambulatory Surgery unit above the area where we will be working. The third floor Ambulatory Surgery Suite coordination drawings indicate the location of the contents of the interstitial space. These drawings will serve as the baseline for existing conditions. The relocation of the lines is not necessary should you be able to coordinate the documents such that they do not need to be moved. Verify elevations and report any differences in the location or elevation between verified existing conditions and coordination drawings within 5 days after demolition of the exterior ceiling tiles. Coordination drawings of the interstitial space shall be submitted for approval within 40 days after the demolition of the ceiling tiles. Coordination drawings produced for the Ambulatory Surgery project are attached for information only.
2. Outages of any kind impacting the third floor cannot last longer than a weekend; defined as Friday and 6 PM to Monday at 6 AM. They must be listed in your Master Construction Schedule and notification given in accordance with the specifications.

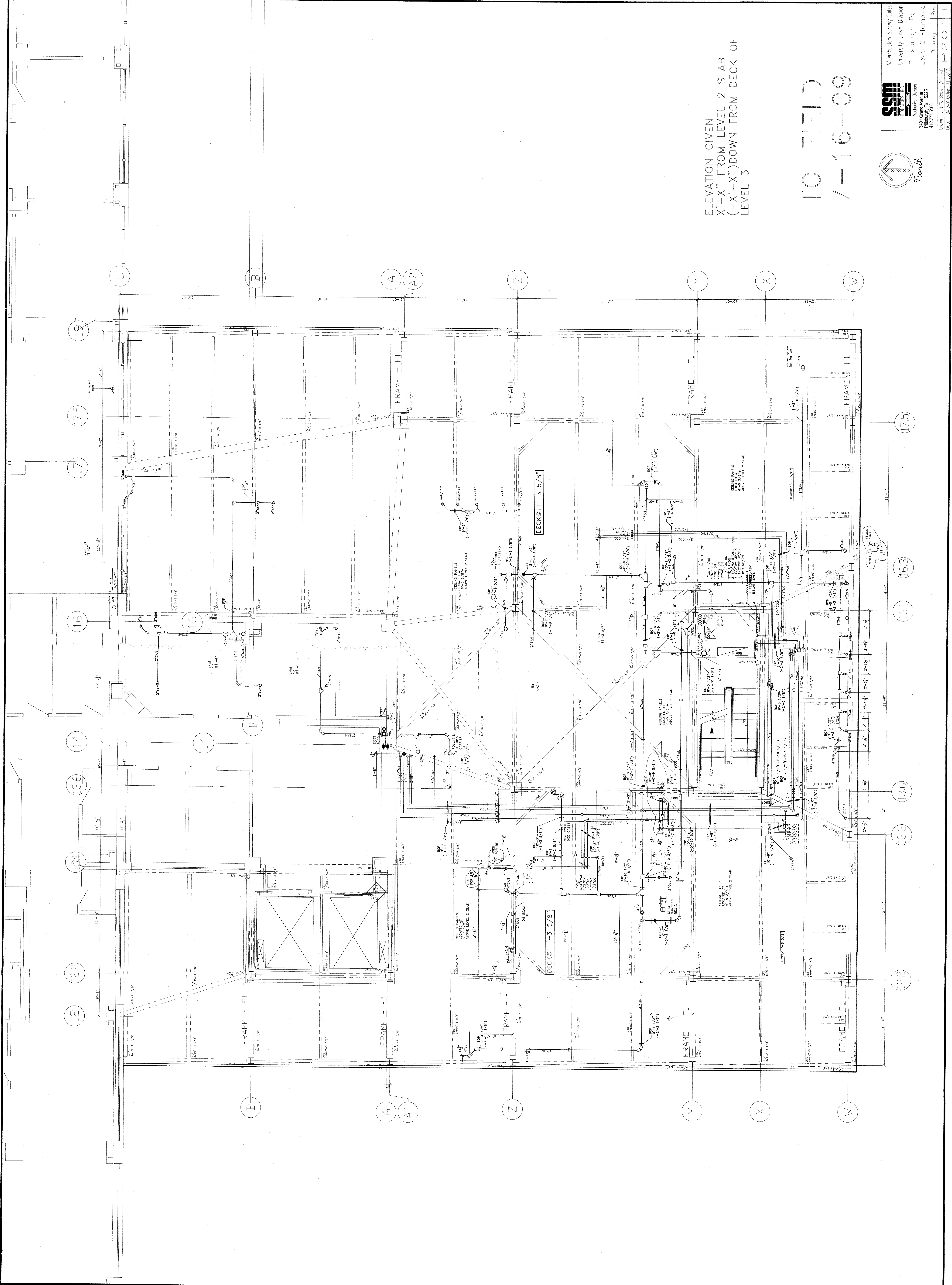
REFERENCE DOCUMENTS: Attached

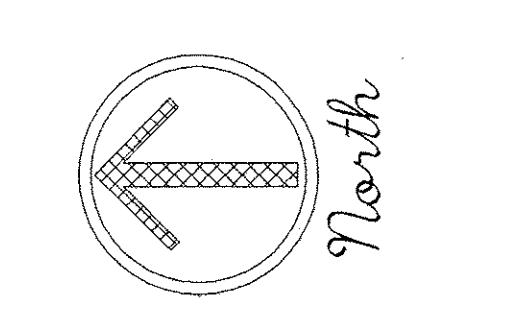
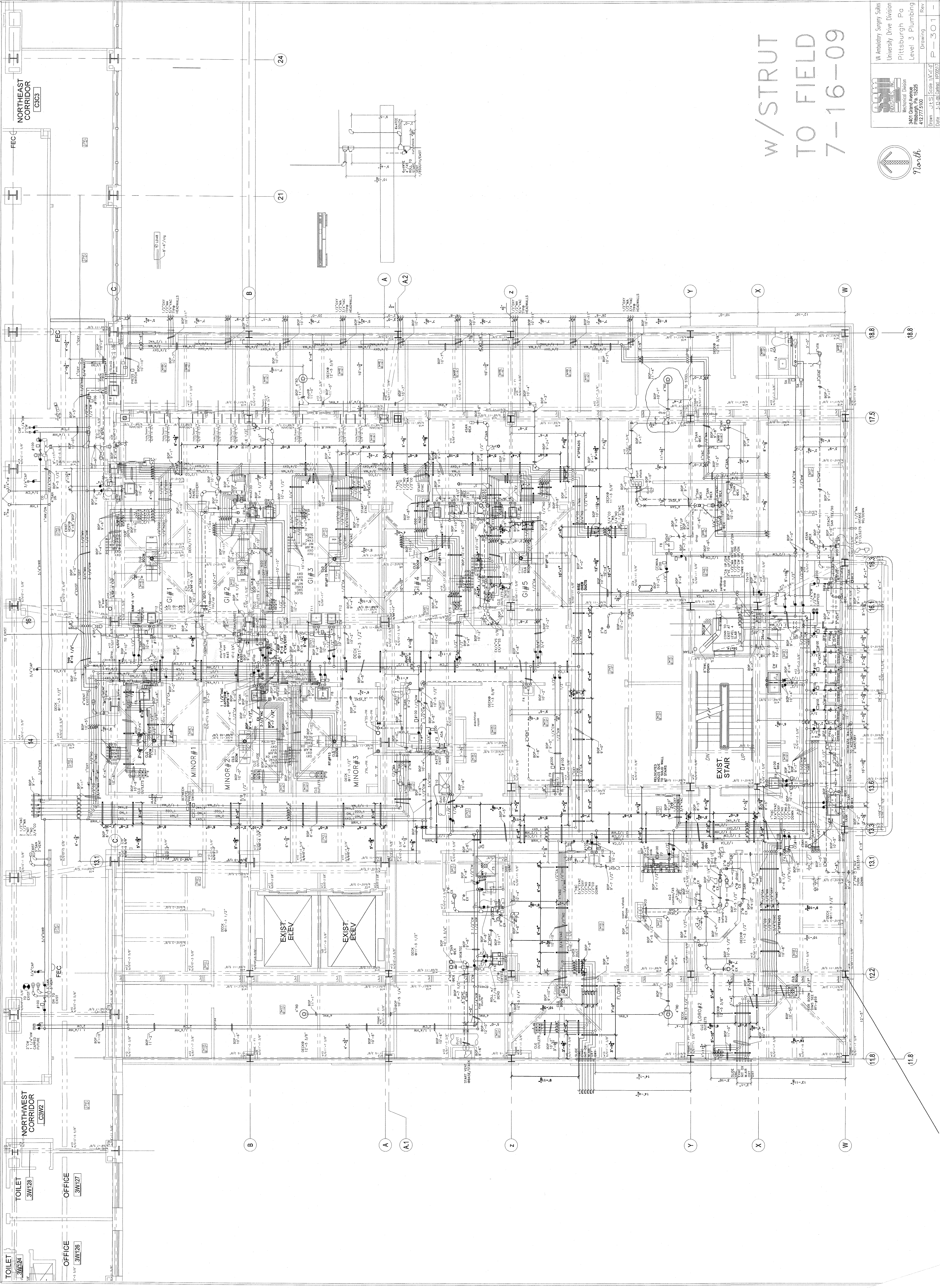
Existing Conditions Coordination Drawings Ambulatory Surgery (3)

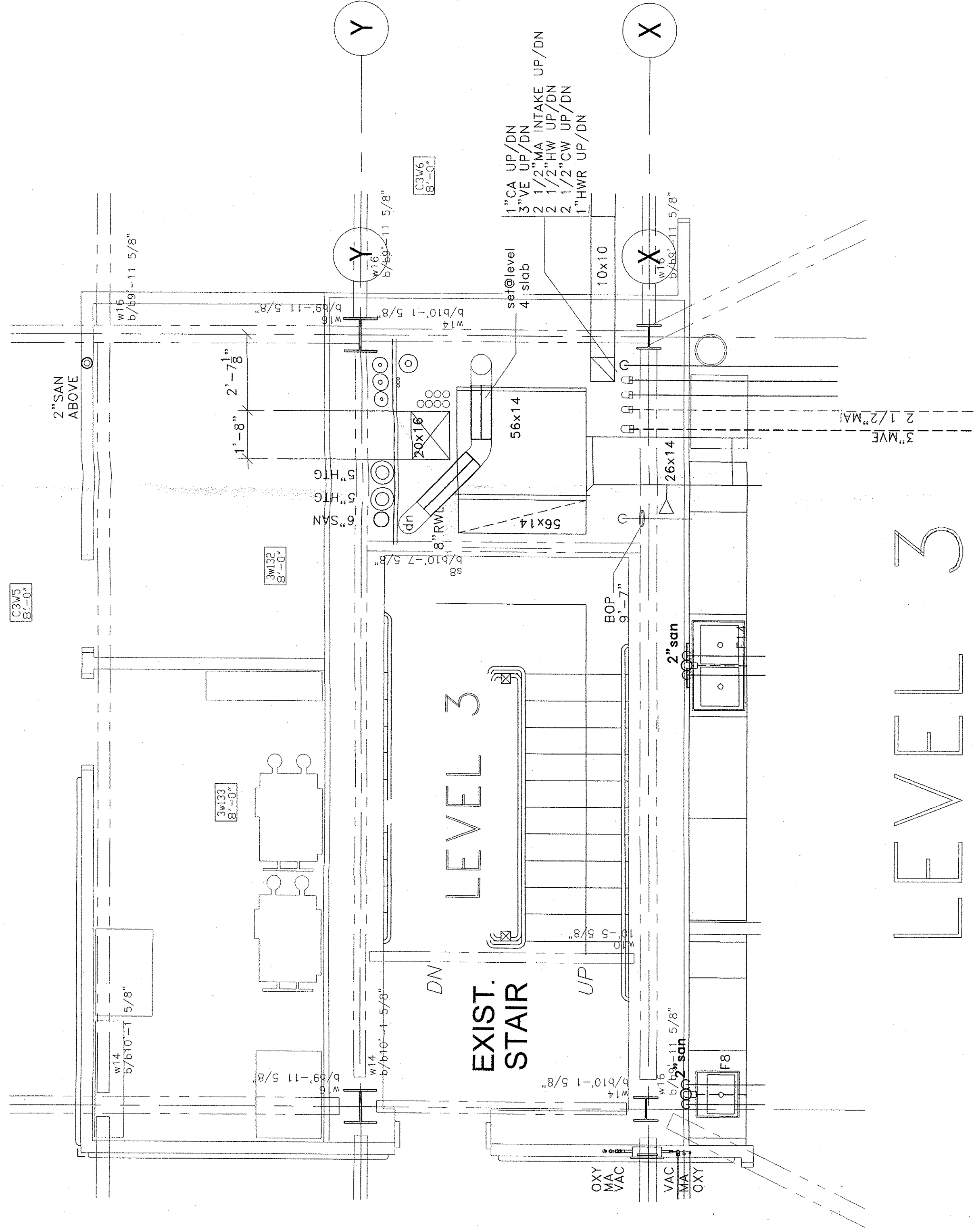
PS-101

PS-201-R1

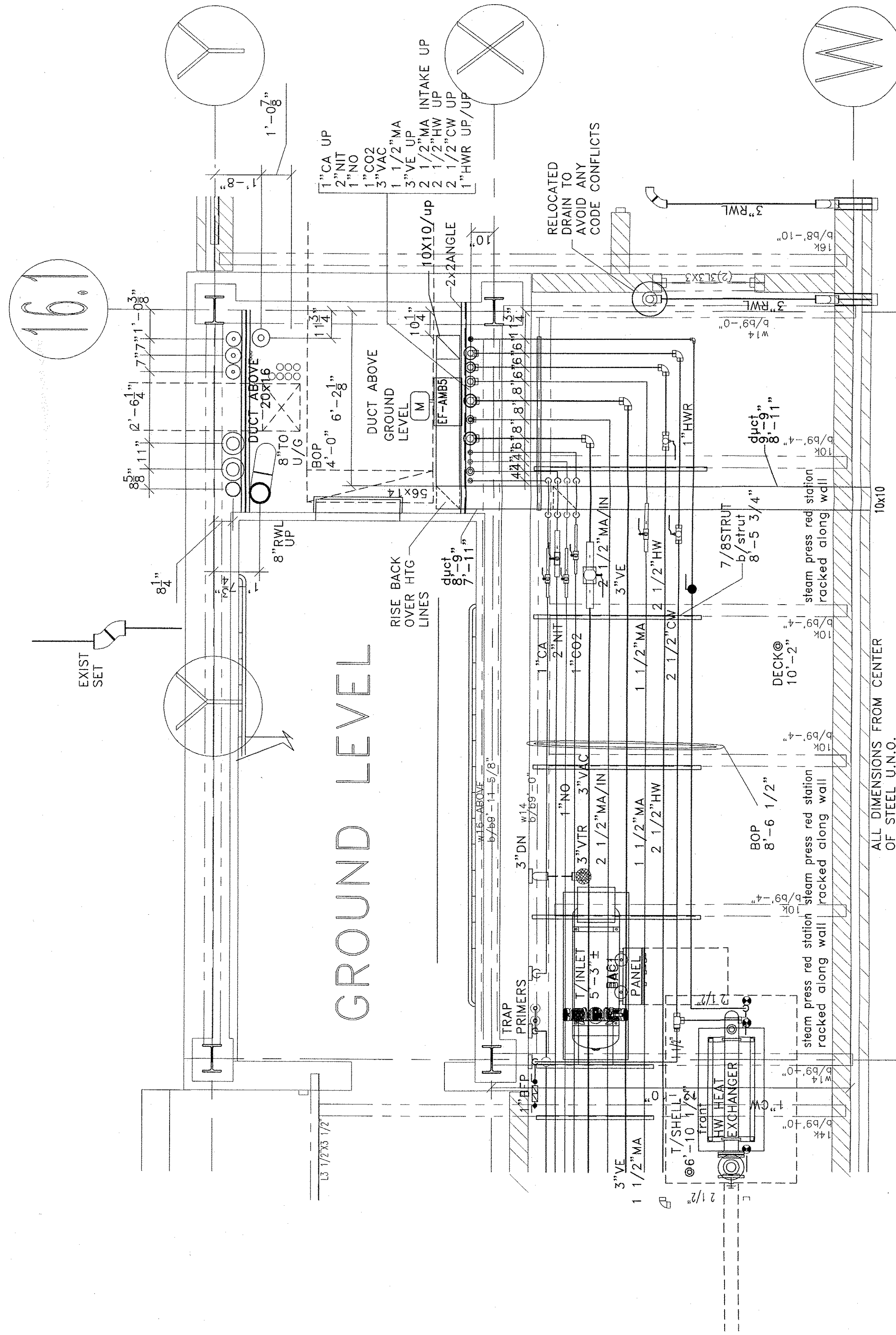
PS-301



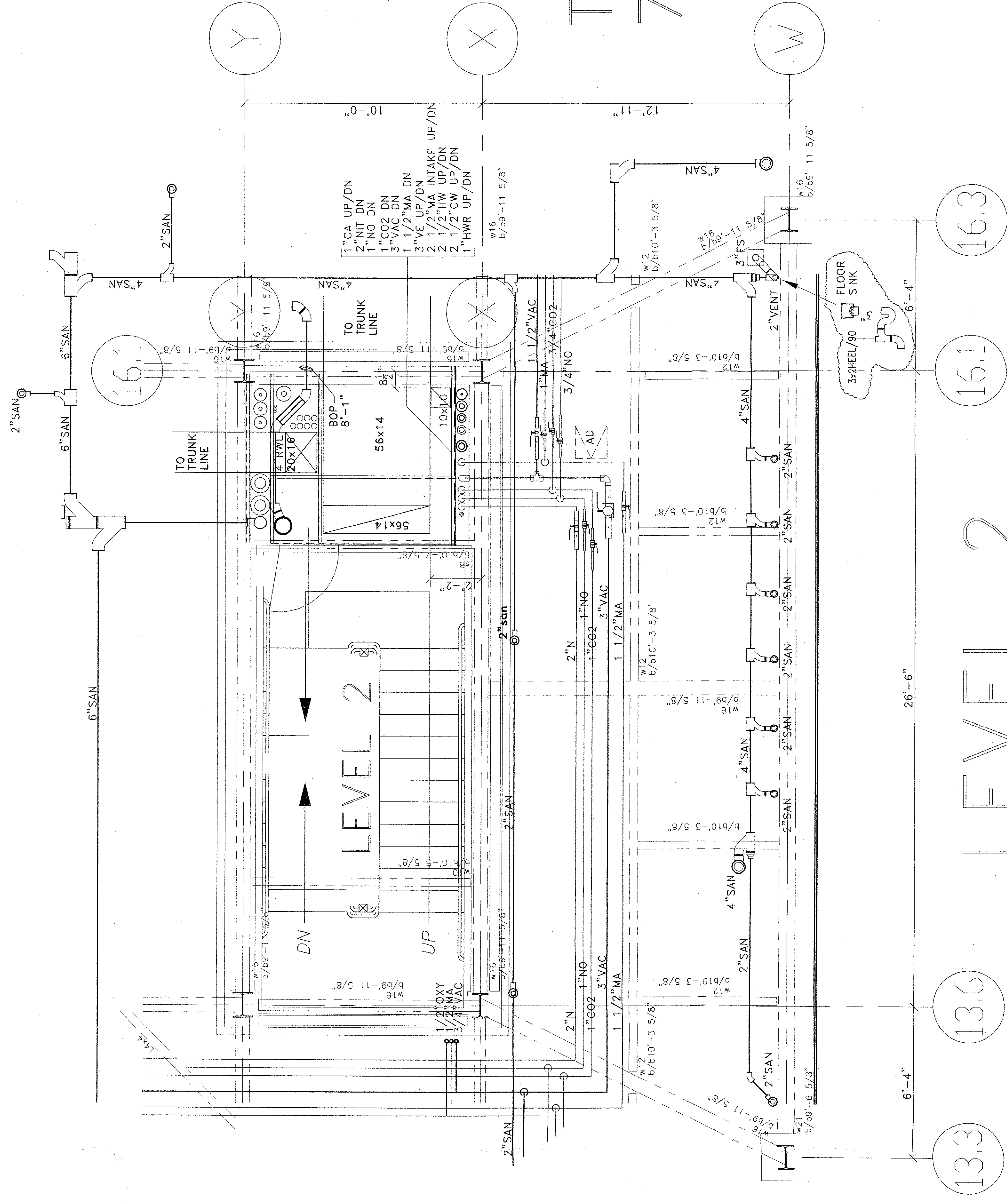




LEVEL 3



GROUND LEVEL



LEVEL 2

TO FIELD
7-16-09

