

GENERAL NOTES

1. SEE CIVIL DRAWINGS FOR COMPLETE SITE PLAN.

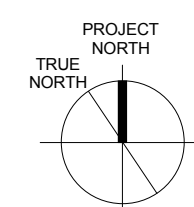
KEY NOTES

1. CONNECTION FOR SIGNAGE.
2. EXISTING MANHOLE TO BE REMOVED. PROVIDE A NEW MANHOLE AND CONDUITS/FEDDER AS SHOWN. SEE CIVIL DRAWINGS FOR MORE INFORMATION.
3. REFER TO E6051, E701 AND E702 FOR MORE INFORMATION ABOUT WORK IN THIS AREA.
4. PROVIDE RECEPTACLE FOR SUMP PUMP IN EACH MANHOLE. WIRE SUMP PUMPS TO 1LN12-16 AND 1LN12-18, RESPECTIVELY. REFER TO E6702/02 FOR MANHOLE DIMENSIONS.
5. (2) SETS OF 3#20, 15KV CONDUCTOR AND 1#40G IN 4" C AND (2) SPARE 4" (TOTAL OF 4) CONDUITS). SEE 7E702/02 FOR DUCT BANK CONFIGURATION.
6. SEE TELECOM DRAWINGS AND SPECIFICATIONS FOR SCOPE OF WORK REGARDING NEW TELECOM MANHOLE.
7. PROPOSED ROUTE OF CONDUIT FROM CTS TO EXISTING EMERGENCY POWER VAULT. WIRE AND TERMINATIONS BY OTHERS. COORDINATE THIS WORK WITH OWNER.

BRANCH CIRCUIT NOTES

1. UNLESS OTHERWISE NOTED, WIRE ALL 277V DEVICES TO PANELBOARD 1LNH1 LOCATED IN ELEC RM 165.
2. UNLESS OTHERWISE NOTED, WIRE ALL 120V DEVICES TO PANELBOARD 1LNL2 LOCATED IN ELEC RM 165.

LEGEND



ISSUE FOR BID

9		
8		
7		
6		
5		
4		
3		
2	ADDENDUM 3	06/26/2014
1	ADDENDUM 2	05/16/2014
Revisions		Date

CONSULTANTS:

Seals and Signatures

ARCHITECT/ENGINEERS:

CANNONDESIGN

201 Mission Street, Suite 2400, San Francisco, California 94105 415.243.4170

Baltimore ■ Boston ■ Buffalo ■ Calgary ■ Chicago
Houston ■ Los Angeles ■ Mumbai ■ New York ■ Phoenix
St. Louis ■ San Francisco ■ Shanghai ■ Toronto
Vancouver ■ Victoria ■ Washington DC

Drawing Title
SITE PLAN

Approved: Project Director
Approver

Project Title	VA SIMULATION CENTER
---------------	----------------------

Location	Veterans Affairs Palo Alto Health Care System 3801 Miranda Ave, Palo Alto, CA 94304
----------	--

Date
JUNE 14, 2013

Checked
RJG

Drawn
JSS

VA Project Number:
640-385

Building Number:
105

Drawing No. 50



A
B
C
D
E
F

three inches = one foot
one and one-half inches = one foot
one inch = one foot
three-quarters inch = one foot
one-half inch = one foot
three-eighths inch = one foot
one-quarter inch = one foot
one-eighth inch = one foot

A
B
C
D
E
F

9		
8		
7		
6		
5		
4		
3		
2	ADDENDUM 3	06/26/2014
1	ADDENDUM 2	05/16/2014
	Revisions	Date

CONSULTANTS:

Seals and Signatures

ARCHITECT/ENGINEERS:

CANNONDESIGN

201 Mission Street, Suite 2400, San Francisco, California 94105 415.243.4170

Baltimore ■ Boston ■ Buffalo ■ Calgary ■ Chicago
Houston ■ Los Angeles ■ Mumbai ■ New York ■ Phoenix
St. Louis ■ San Francisco ■ Shanghai ■ Toronto
Vancouver ■ Victoria ■ Washington DC

Drawing Title
ONE LINE DIAGRAM

Approved: Project Director
Approver

Project Title
VA SIMULATION CENTER

Location
Veterans Affairs Palo Alto Health Care System
3801 Miranda Ave, Palo Alto, CA 94304

Date
JUNE 14, 2013

Checked
RJG

Drawn
JSS

VA Project Number:
640-385
Building Number:
105

Drawing No.
E0501

VA PAHCS
Veterans Affairs Palo Alto Health Care System

Department of
Veterans Affairs

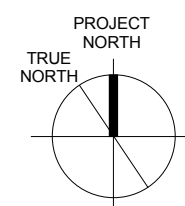
GENERAL NOTES

1. COORDINATE SHUT-DOWN OF EXISTING ELECTRICAL SERVICE WITH OWNER. MAKE ACCOMMODATIONS FOR TEMPORARY POWER AS NEEDED.

KEY NOTES

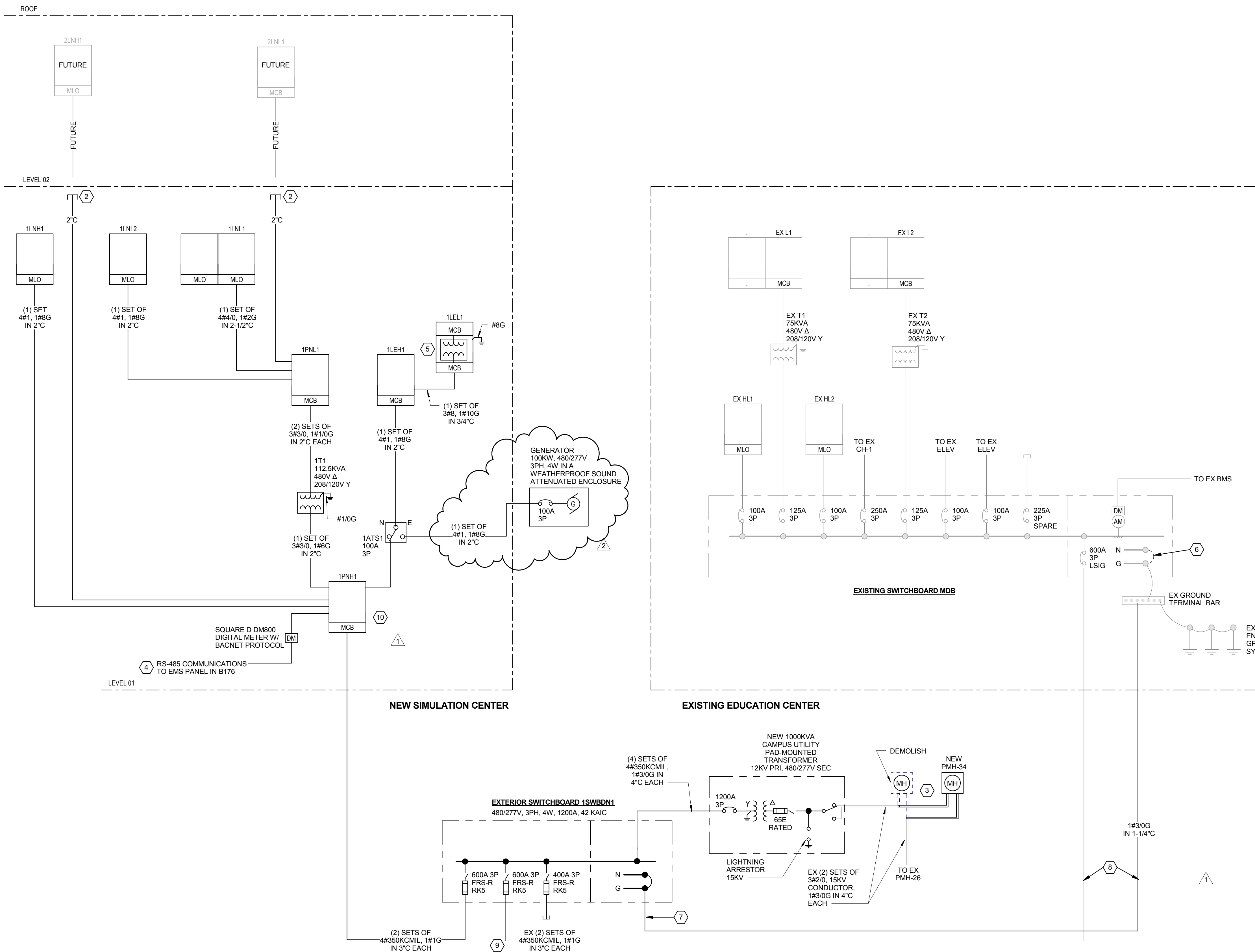
1. INSTALLATION AND TERMINATION OF EMERGENCY POWER FEEDER AND CONDUIT IS A PART OF DIFFERENT SCOPE OF WORK TO BE COORDINATED BY THE OWNER. PROVIDE STUB UP AT LOCATION SHOWN ON DRAWING E0051.
2. STUB UP CONDUIT(S) TO ACCESSIBLE CEILING.
3. SEE E0051 AND 4/E0702 FOR MORE INFORMATION.
4. REFER TO MECHANICAL SPEC SECTION 23-0923 FOR MORE INFORMATION ON EMS SYSTEM.
5. THREE PHASE POWER CENTER WITH INTEGRAL 480V TO 208/120V, 9KVA TRANSFORMER WITH FACTORY INSTALLED 25A PRIMARY AND 25A SECONDARY MAIN CIRCUIT BREAKERS.
6. REMOVE NEUTRAL TO GROUND BOND ON EXISTING SWITCHBOARD MDB.
7. PROVIDE NEW GROUND WIRE FROM 1SWBDN1 TO EXISTING GROUND TERMINAL BAR IN EXISTING ELECTRICAL ROOM. SEE E0051 FOR MORE INFORMATION.
8. PROVIDE DEDUCTIVE ALTERNATE PRICING TO RUN THE NEW #3/0 GROUND WIRE IN EXISTING 3" CONDUIT.
9. SEE 4/E0701 FOR ADDITIONAL INFORMATION REGARDING WORK IN THIS AREA.
10. PROVIDE EXTERNALLY MOUNTED TVSS FOR PANELBOARD "1PNH1". PROVIDE (3) SPARE TVSS MODULES.

LEGEND



ISSUE FOR BID

1 ONE LINE DIAGRAM





C



- F

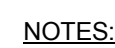
F



1 ELECTRICAL ROOM GROUND TERMINAL BAR



- 

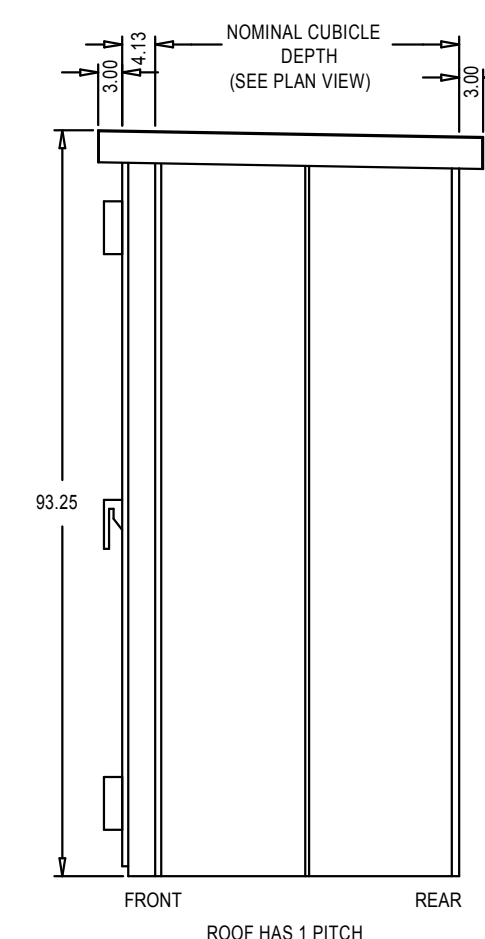
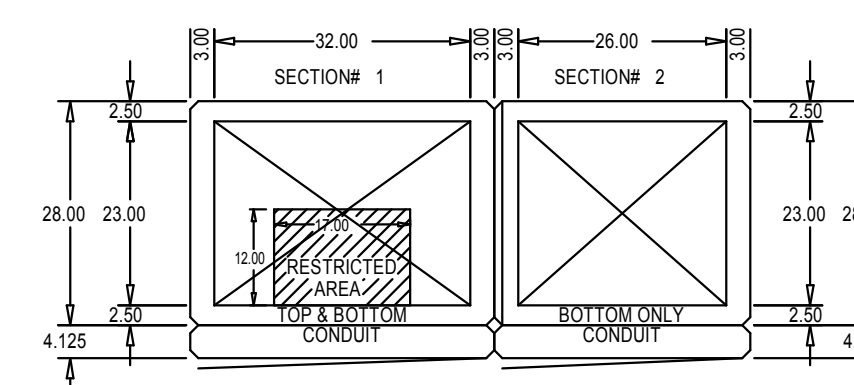


- 8 1000 KVA TRANSFORMER PAD & CONTAINMENT TRENCH
1/8" = 1'-0"

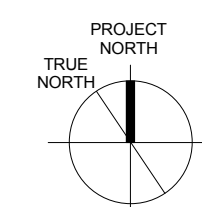
1



6 PHYSICAL GROUNDING REQUIREMENTS



5 EXTERIOR SWITCHBOARD "1SWBDN1" DETAILS



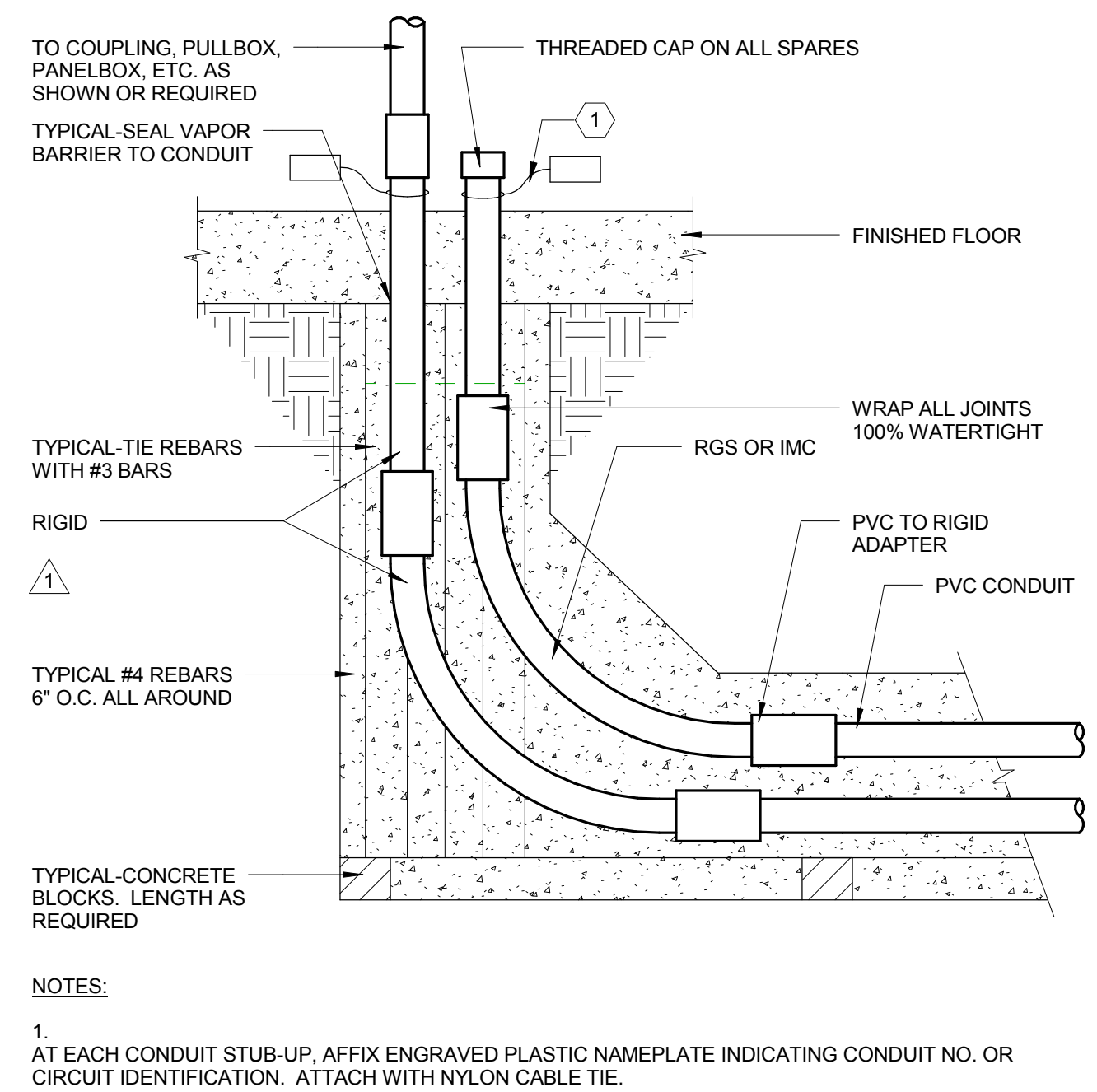
ISSUE FOR BID

 Department of
Veterans Affairs

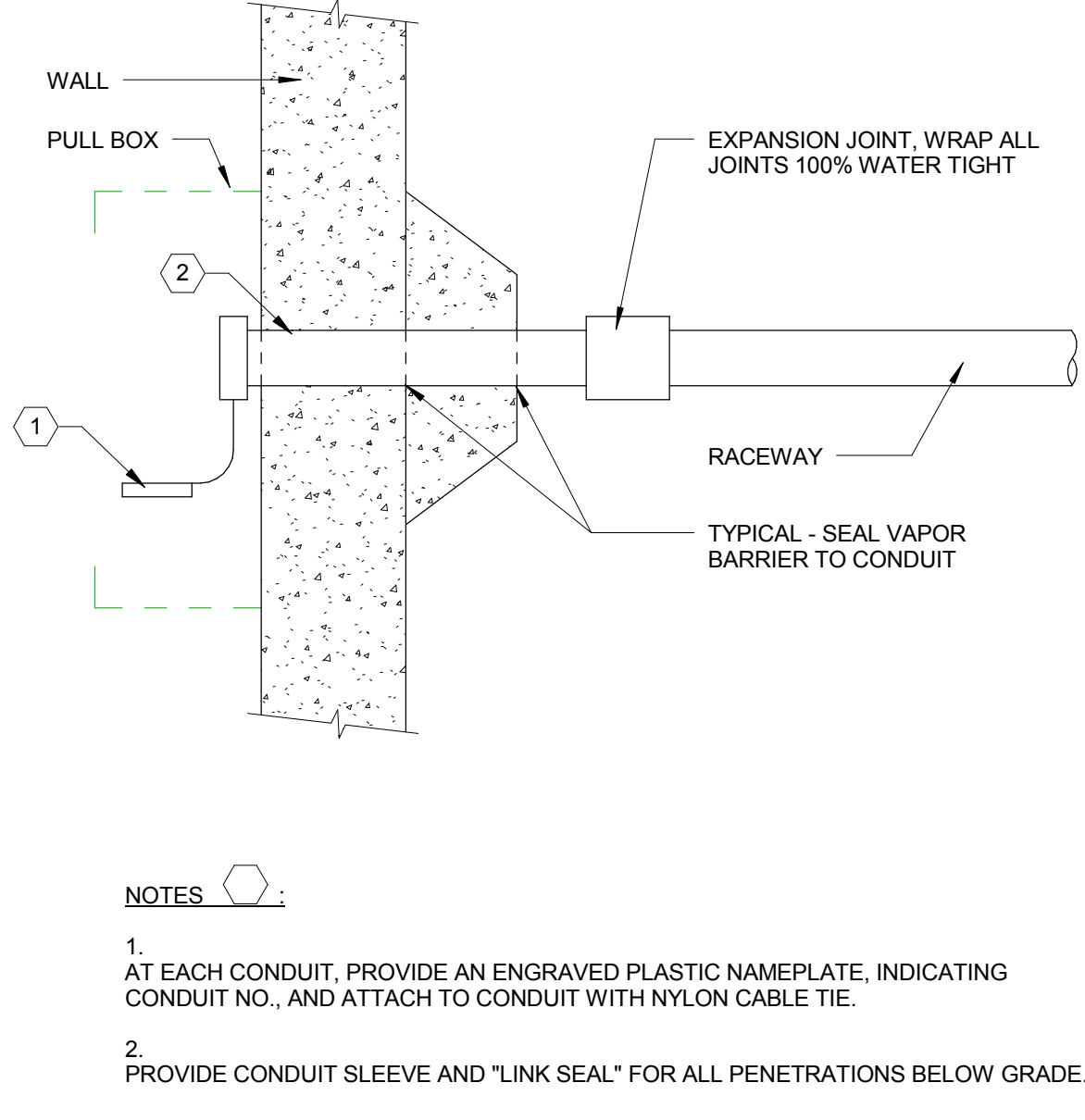
A
B
C
D
E
F

three inches = one foot
one and one-half inches = one foot
one inch = one foot
three-quarters inch = one foot
one-half inch = one foot
three-eighths inch = one foot
one-quarter inch = one foot
one-eighth inch = one foot

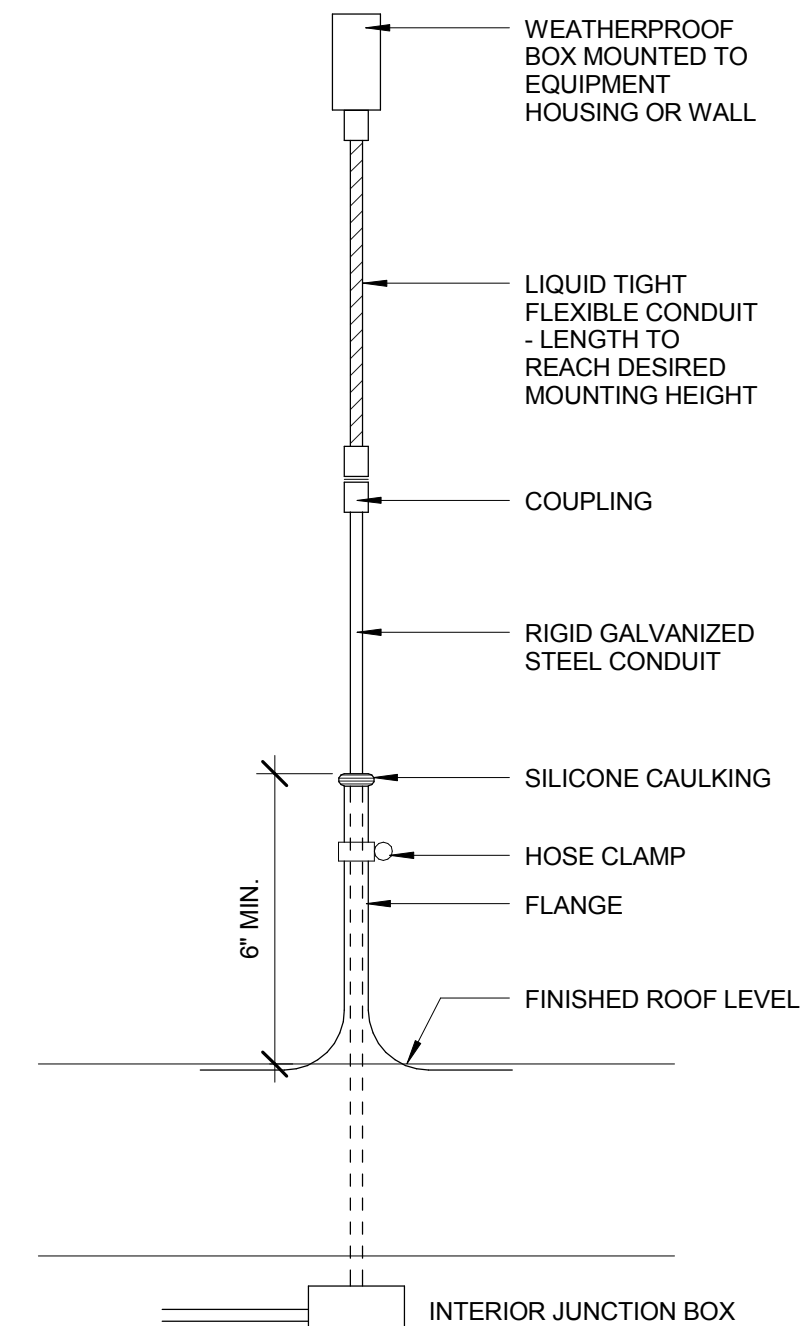
1 2 3 4 5 6 7 8 9 10



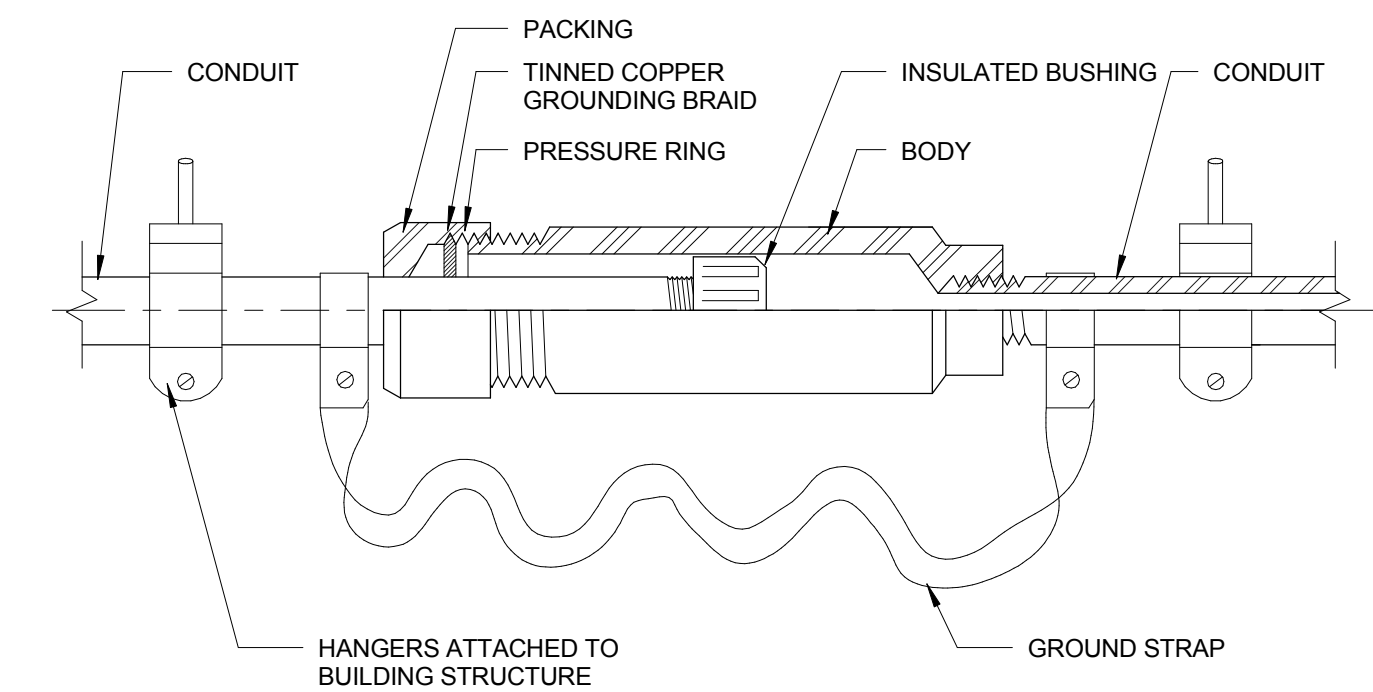
4 CONDUIT STUB-UP INSIDE BUILDING



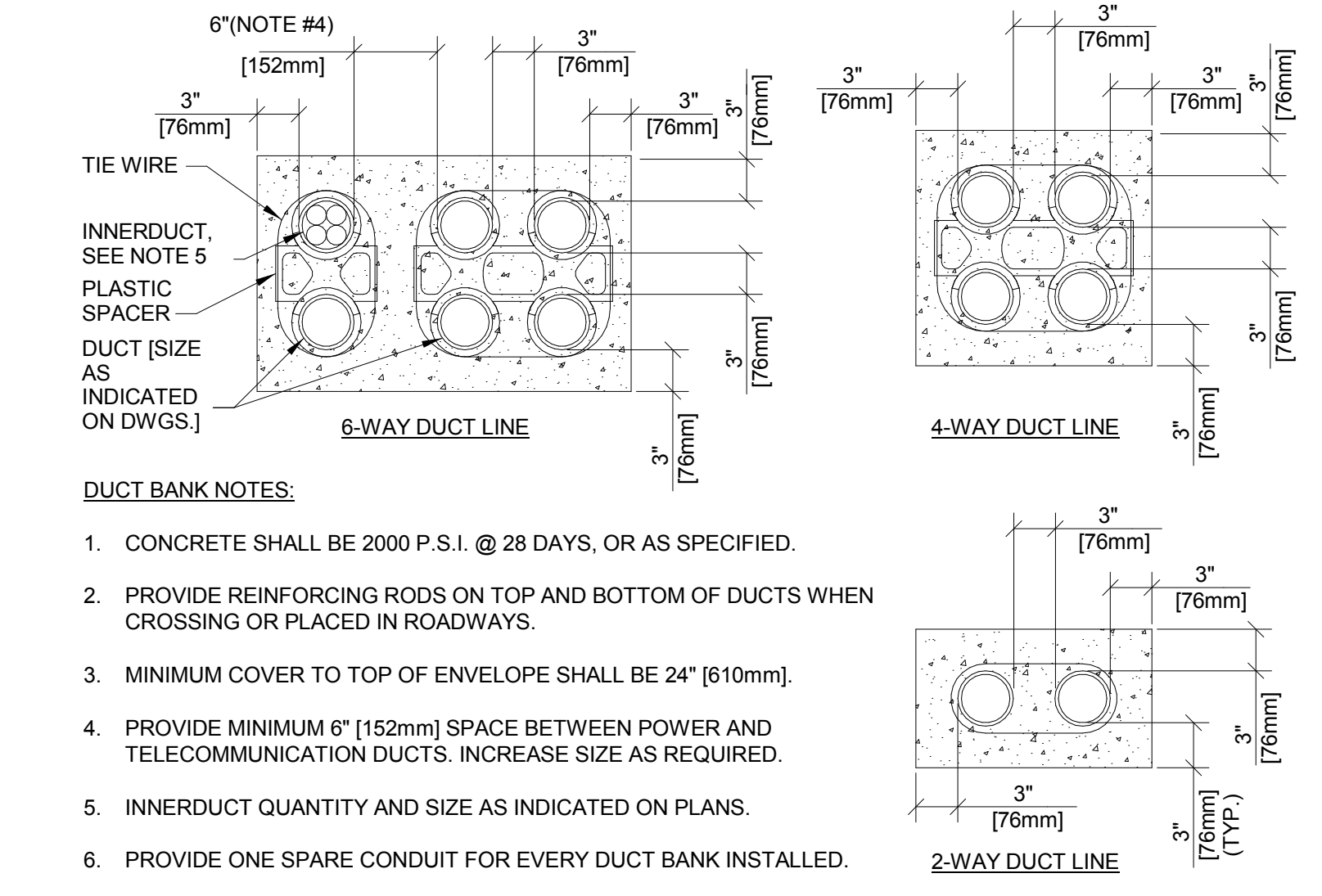
3 TYPICAL DIRECT BURIAL CONDUIT PENETRATION INTO BUILDING



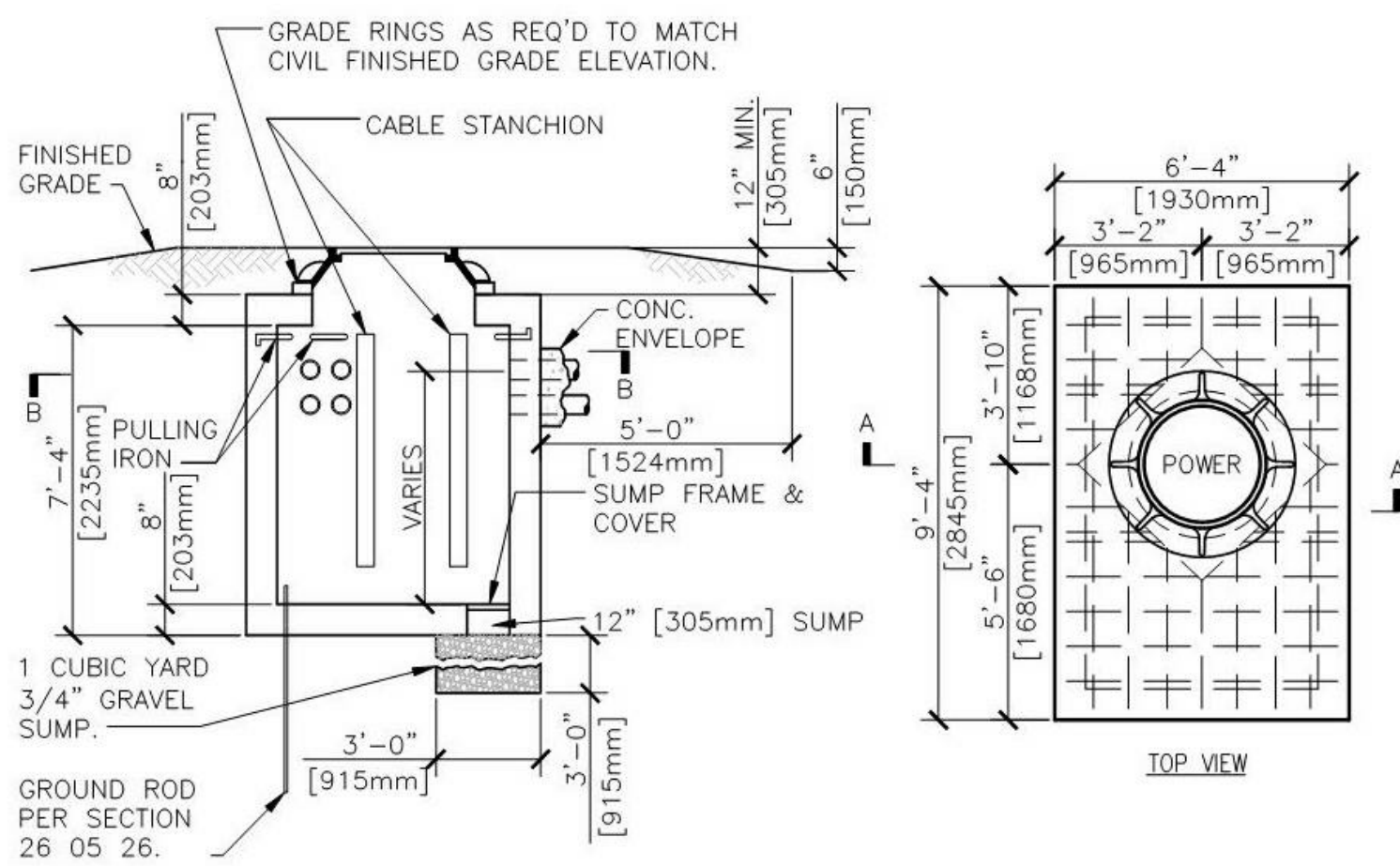
2 RACEWAY ROOF PENETRATION



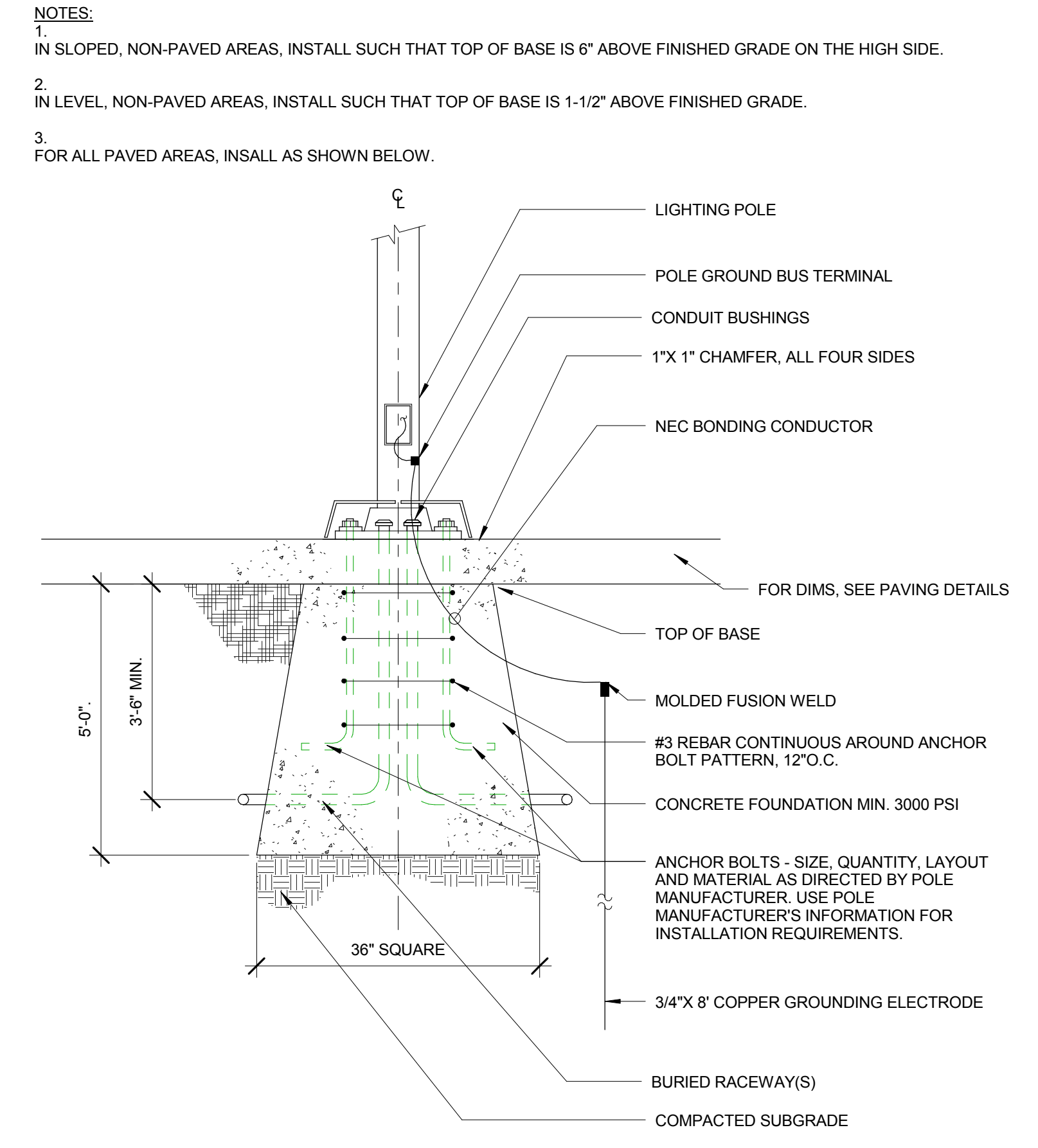
1 CONDUIT EXPANSION FITTING



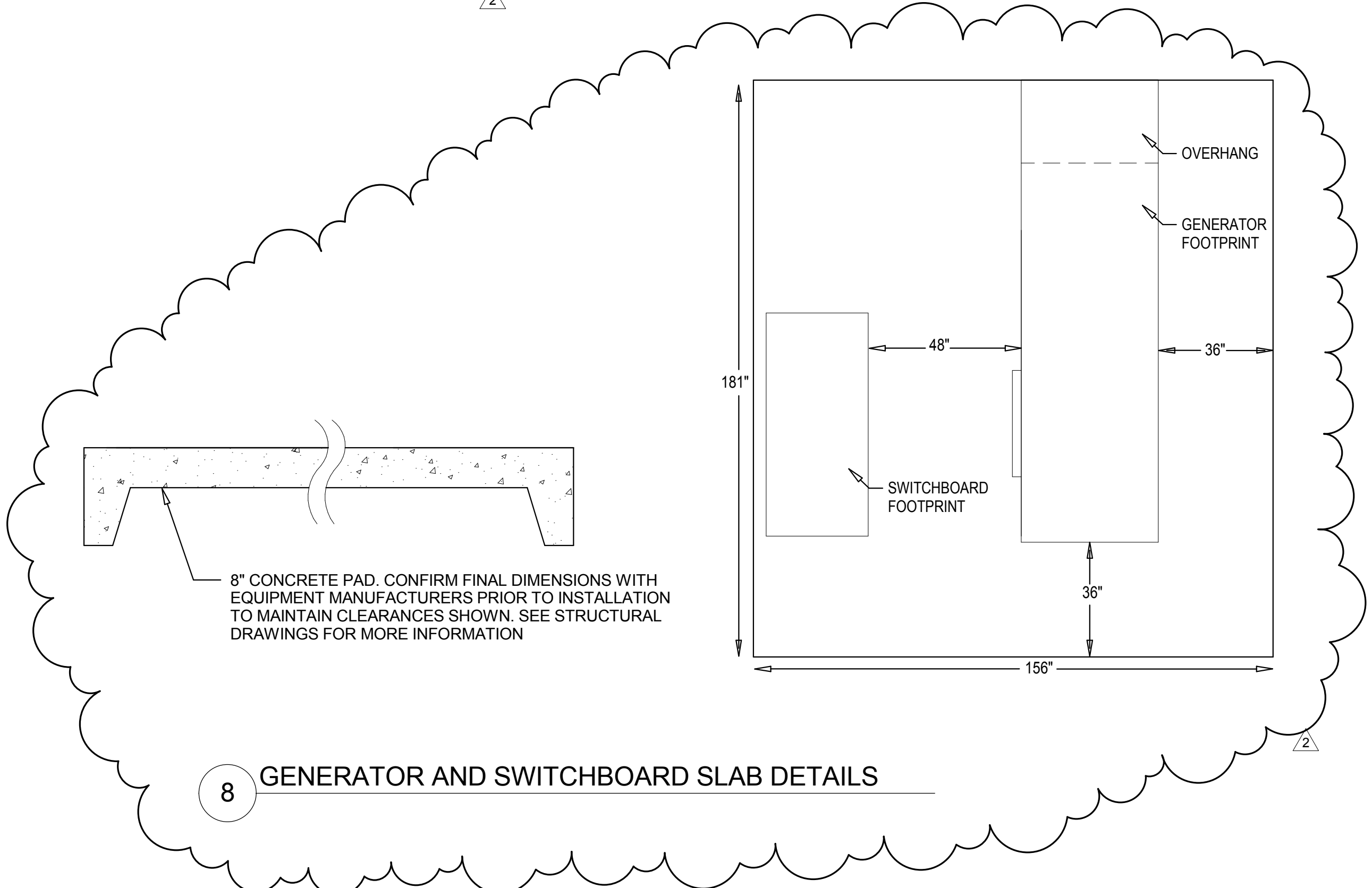
7 ELECTRICAL AND TELECOM DUCT BANK DETAIL



6 POWER & TELECOM MANHOLES



5 LIGHTING POLE FOUNDATION



8 GENERATOR AND SWITCHBOARD SLAB DETAILS

GENERAL NOTES

KEY NOTES

LEGEND

ISSUE FOR BID

9			CONSULTANTS:		Seals and Signatures	ARCHITECT/ENGINEERS:	<div>CANNON</div> <div>DESIGN</div> <div>201 Mission Street, Suite 2400, San Francisco, California 94105 415.243.4170</div> <div>Baltimore ■ Boston ■ Buffalo ■ Calgary ■ Chicago</div> <div>Houston ■ Los Angeles ■ Mumbai ■ New York ■ Phoenix</div> <div>St. Louis ■ San Francisco ■ Shanghai ■ Toronto</div> <div>Vancouver ■ Victoria ■ Washington DC</div>	Drawing Title	ELECTRICAL DETAILS	Project Title	VA Project Number:	640-385	Building Number:	105	Drawing No.	E0702	<div>VA</div> <div>Veterans Affairs</div> <div>PAHCS</div> <div>Palo Alto Health Care System</div>
8																	
7																	
6																	
5																	
4																	
3																	
2	ADDENDUM 3	06/26/2014															
1																	
Revisions			Date					Approved: Project Director	Approver	Location	Veterans Affairs Palo Alto Health Care System 3801 Miranda Ave, Palo Alto, CA 94304	Date	JUNE 14, 2013	Checked	RJG	Drawn	JSS

1 2 3 4 5 6 7 8 9 10