

SYMBOL LIST

FCCP	FIRE SYSTEM CONTROL UNIT
APSP	ALARM DEVICE POWER SUPPLY
FPCP	FIRE PUMP CONTROL PANEL
RECR	ELEVATOR RECALL CONTROL RELAYS
EPSS	ELEVATOR POWER SHUTDOWN RELAYS
RAN	SITE NETWORK FIRE ALARM ANNUNCIATOR PANEL
FAP	FIRE ALARM PRINTER
UPS	UNINTERRUPTIBLE POWER SUPPLY
CRT	CRT WITH KEYBOARD - OPERATOR'S TERMINAL
TC	FIRE ALARM TERMINAL CABINET
RA	REMOTE ANNUNCIATOR
ML	MAGNETIC DOOR LOCK RELEASE
RL	REMOTE INDICATOR LAMP
SD	SMOKE DAMPER
EP	ELECTRICAL PANEL
KH	KITCHEN HOOD FIRE SUPPRESSION SYSTEM
MP	MANUAL PULL STATION
PSD	PHOTOELECTRIC SMOKE DETECTOR (S-SOUNDER SMOKE DETECTOR)
H	HEAT DETECTOR
ASD	AIR DUCT SMOKE DETECTOR
S	SPEAKER (CEILING MOUNT)
SH	HORN WITH STROBE (WALL MOUNT) (SP-SPEAKER WITH STROBE)
H	HORN (WALL MOUNT)
SL	STROBE LIGHT (WALL MOUNT)
J	JUNCTION BOX
R	RELAY MODULE
AM	ADDRESSABLE MONITOR MODULE
M	MAGNETIC DOOR HOLDER
SW	FIRE SPRINKLER WATERFLOW SWITCH
SV	FIRE SPRINKLER VALVE SUPERVISION SWITCH
A	16-2C SHIELDED FPLP CABLE - (SLC)
B	16-2C SHIELDED FPLP CABLE - (SPEAKER)
C	14-2C UNSHIELDED FPLP CABLE - (NAC)
D	16-2C UNSHIELDED FPLP CABLE - (DOOR HOLDER POWER)
E	16-2C UNSHIELDED FPLP CABLE - (DUCT DETECTOR POWER)

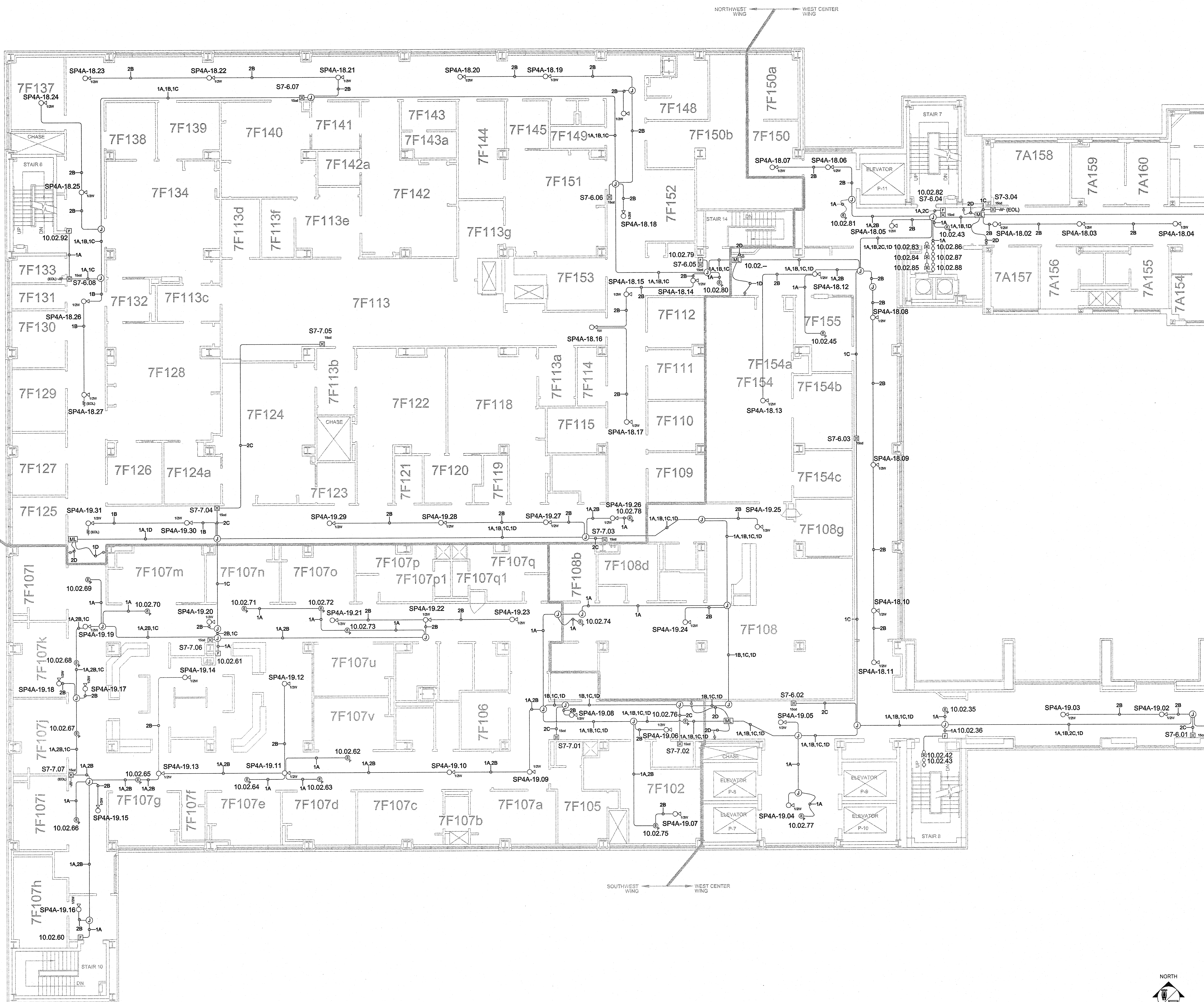
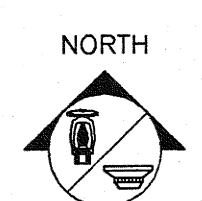
General Notes

- All wiring shall be in compliance with Article 760 of the enforced version of the National Electric Code (NFPA 70), the National Fire Code (NFPA 72) and local building and fire codes.
- AC input power to the fire alarm system power supplies requires a dedicated single phase, 20 amp, 120 volt circuit with ground. Mark these circuits "FIRE ALARM SYSTEM".
- Traditional "Hard Wired" initiating and indicating circuits are circuited in series-parallel utilizing a resistor for integrity supervision of the circuit's conductors. Wire all circuits as shown. No parallel branching of conductors is permitted.
- Analog signaling line circuits are parallel and do not require a supervision resistor. In certain applications, signaling line circuits are installed in series-parallel for a higher performance level. Wire all circuits as shown. Contact Mac Systems before deviating from the drawings.
- Device Placement:
 - Smoke detectors and heat detectors shall be located at least 3' from and air register and at least 4" from the wall.
- Equipment Elevations:
 - Control Units - 72" AFF to top of the cabinet.
 - Annunciators - 60" AFF to the centerline of the cabinet.
 - Manual pull stations - 42" - 54" to the operating handle of the device. Use switch height if in these parameters.
 - Audible Visual Devices - 80" AFF or 6" below the ceiling to the centerline of the outlet box whichever is lower.
 - Visual Devices - 80" AFF or 6" below the ceiling to the centerline of the outlet box whichever is lower.
 - Audible Devices - 90" AFF or 6" below the ceiling to the centerline of the outlet box whichever is lower.
- Outlet box requirements:
 - Manual pull stations - Single gang box or 4" square box with a single gang plaster ring.
 - Smoke detectors - 4" square box with a round plaster ring. Use a 2 1/8" deep box with an extension ring and no plaster ring if the smoke detector has an integral audible alarm.
 - Heat detectors - 4" square box with a round plaster ring.
 - Monitor modules - 4" square box with a blank cover.
 - Control modules - 4" square box - 2 1/8" deep.
 - Strobe Horns and Strobe lights - Single gang box or 4" square box with a single gang plaster ring. The plaster ring may be deleted for surface mount installations.
 - Speakers and Speaker Strobe - 4" square box - 2 1/8" deep with an extension ring.
 - Door Holders - Single gang box or 4" square box with a single gang plaster ring.
- Special Notes:
 - Voltage drop and battery calculations will be performed in the field based upon actual wire lengths using Wheelock version 6 voltage drop calculator.
 - Fire alarm speakers will be connected to the system so that no more than 20 watts of power will be consumed per circuit.
 - Actual device, control unit, and power supply locations will be shown on the record drawings. Cable quantities, types, and locations will also be shown on the record drawings.



210 South Norfolk
Tulsa, Oklahoma 74120
Voice (918) 582-1148 Fax (918) 582-3700
Oklahoma Alarm License # 0363

Department of Veterans Affairs
VA Medical Center
921 NE 13th Street
Oklahoma City, Oklahoma 73104
SCALE: 1/8" = 1' DRAWN BY: John Quim
DESIGNER: John Quim
JOB NUMBER: 1224 DRAWING DATE: As-Built - 02/16/07
FLOOR: Seventh Floor
DRAWING TYPE: Fire Detection and Alarm System
SHEET NUMBER: FA129



NORTHWEST WING
SOUTHWEST WING

NORTHWEST WING
WEST CENTER WING

SOUTHWEST WING
WEST CENTER WING