



VA Sierra Nevada Health Care System
Reno, Nevada

INTERACTIVE DYNAMIC WAYFINDING DIRECTORIES

Design/Build/Program

Profile, Specifications & Scope of Work

Bid Documents (Final)

June 26, 2013

**H+K ARCHITECTS
SOLSIS LLC
PK ELECTRICAL, INC.**

INTERACTIVE DYNAMIC WAYFINDING DIRECTORIES

Design/Build/Program

Profile, Specifications &
Scope of Work

Solsis LLC

790 Lathrop Road
Grants Pass, OR
97526-9334

888 476-4111
phone & fax



INTERACTIVE DYNAMIC WAYFINDING DIRECTORIES

PROJECT OVERVIEW

The scope of this project is to design a interactive touch screen directory that will enable visitors to locate specific departments within the hospital and clinical building(s). This scope of work involves both single sided wall mounted and free standing double sided kiosk directories with touch screen display(s) with a directory and interactive wayfinding map of the facility.

The project requires taking the kiosk & directory design intent shown herein and developing construction design and fabrication drawings, constructing the units, and then their installation. The project involves designing the maps and illustrations necessary to show the entire hospital, all floors, in the appropriate views for correct orientation. A directory listing for all the services within the hospital will be developed and the services identified on the map in their correct location for directing a visitor to the room or point of reception.

The directory and map are to be interactive allowing a user to touch a directory listing and then the map will illustrate the path of travel, from the location of the directory to the service location.

The project also involves providing software and art support for updating the directories during their first year of operation.

PROJECT LOCATION

Ioannia A. Lougaris Medical Center, Reno, NV

A - DIRECTORY LOCATIONS WITHIN THE BUILDING

There are to be 3 different locations.

Location 1 - A free standing double sided kiosk installed, on the first floor, off the main entrance lobby, in the main corridor.

Location 2 - A free standing double sided kiosk adjacent to the Mental Health Building entrance lobby and the corridor off Emergency.

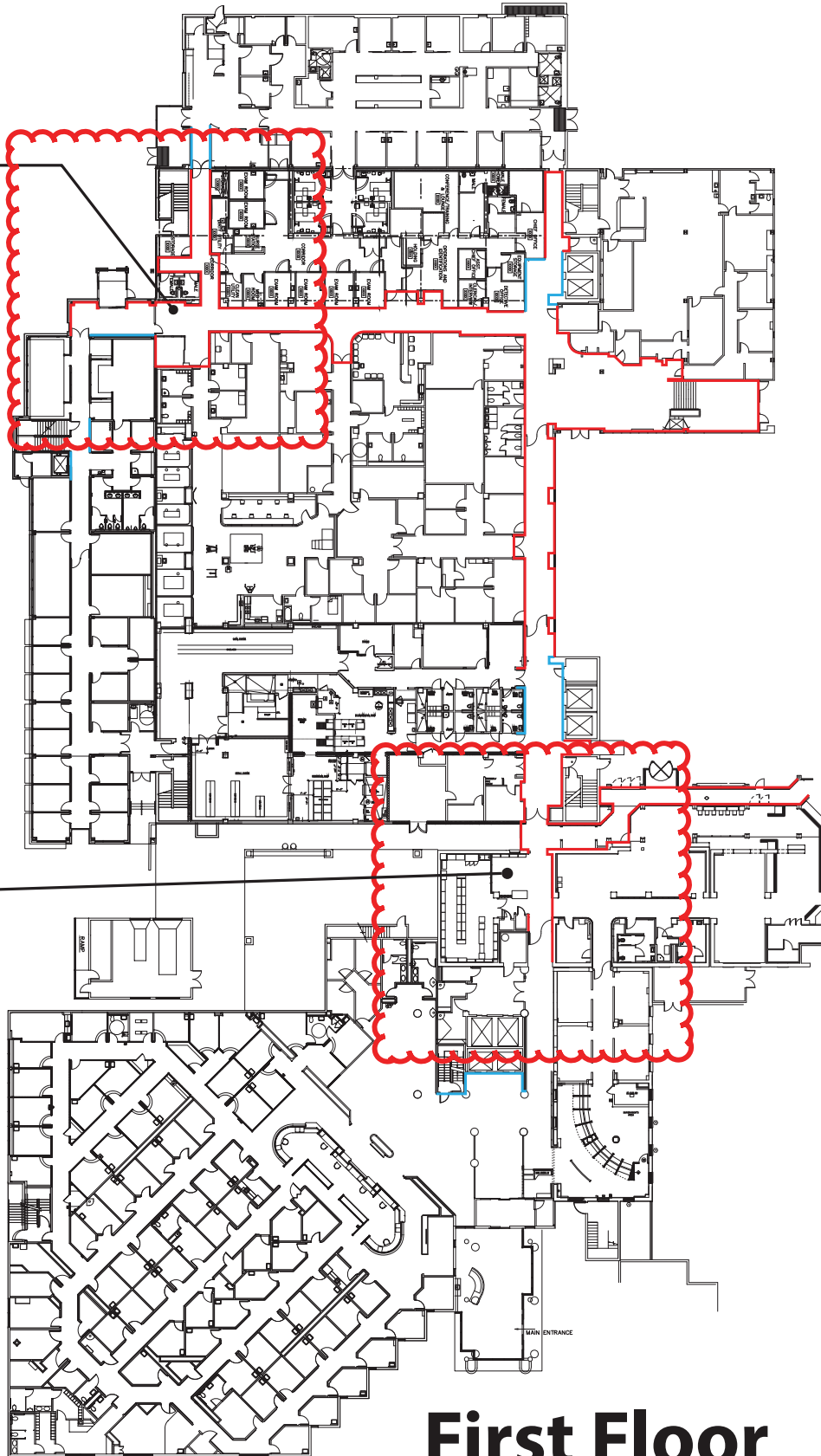
Location 3 - A wall mounted unit in an alcove near the corridor intersection of the 2nd floor.

The kiosk directory in location 1 & 2 is to be installed in a semi permanent manner (secured to the floor, but capable of be moved if necessary). The wall directory in location 2 is to be installed in a semi temporary manner, as it may be moved in a year.

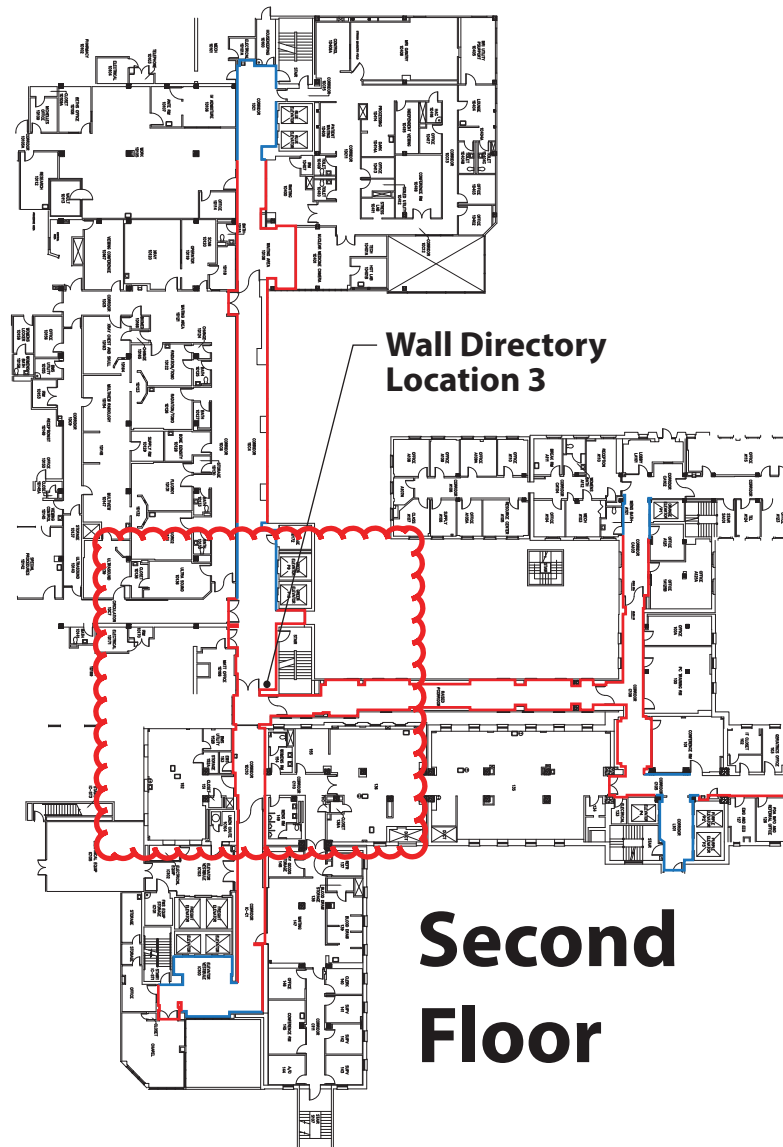
The following drawings show the locations within the hospital.

Kiosk
Location
1

Kiosk
Location
2



First Floor



B - PRODUCT DESCRIPTION

Wall mounted and free-standing 2 sided kiosk with electronic touch screen interactive directory. See drawings.

The dynamic display will contain a directory listing of departments and services within the hospital. These will be identified by name, area and color, floor and room number. The display will illustrate a map of the different floor levels of the facility and the elevators servicing the floors. The map will need to be orientated

to the way the user is facing in relation to the building orientation. Considering the locations and the units being 2 sided, there will be 4 orientation views required.

When a user touches the directory listing, a route from the location of the kiosk, to the department that has been touched, will be displayed on the map. This route will identify the "you are here" starting point, the path of travel, the elevator (if required) and the path of travel from the elevator to the end destination, the name of the department at the end destination and the room number.

C - PROVIDED BY HOSPITAL & DESIGNER

The hospital and designer will provide a listing of all departments/services to be listed in the directory. Designer will provide map art of each floor of the facility. The hospital will provide information noting where the departments or service are located.

It is estimated that there are approximately 40 departments/services that will be identified through out the building on different floors. The hospital has 6 floors and 6 public elevators. Different areas of the hospital floor plans will need to be represented in different colors that coordinate with hospital's sign program. The designer will provide drawings showing the areas and specifying the colors.

D - PROVIDED BY CONTRACTOR

1. Freestanding Kiosk Structure with Interactive Touch Screen Directories

Free standing double sided kiosk structure as shown in the drawing. 2 required, in 2 locations. The drawing illustration is design intent and the Contractor can slightly adjust the design and dimensions to incorporate the specific requirements that may be necessary to accommodate the touch screen monitors. The unit is fabricated out of aluminum with a touch screen on both sides with one set for standing operation and one set for wheel chair height operation.

Touch screens are to be minimum 42" (diagonal) size. Kiosk structure is to be constructed the same for all locations. Kiosks are to be base weighted to be secure and not tip. Units can be mounted to the floor, but the mounting has to be of the type that allow the facility to easily disconnect and move the units for floor maintenance.

2. Wall Mounted Interactive Touch Screen Directory

Wall mounted directory as shown in the drawing. 1 required, in 1 location. The drawing illustration is design intent and the Contractor can slightly adjust the design and dimensions to incorporate the specific requirements that may be necessary to accommodate the touch screen monitor. The unit (case) is fabricated out of aluminum with a single touch screen. Touch screen to be minimum 42" (diagonal) size. Units construction and installation on the wall must allow the facility to easily disconnect and move the unit for possible relocation.

3. Digital Content

Directory information.....

- a. A welcome screen that tells a person what this is and how to use it.
- b. A directory, listing all "public" services in the hospital and where they are located.

- c. A map illustrating the entire hospital, all floors, corridors, elevators and available routes of circulation.
- d. An interactive capability to show a route of travel from the directory location to the selected service location selected in the directory.
- e. Electronic support for the digital content and system is to be provided by the Contractor, not the VA. In addition to the directory having the directory/map wayfinding capability, the contractor will need to host this dynamic wayfinding system so that the same activity could be accessed, by an individual over the internet, with a link from the VA Medical Center's website.

Allowances for future capability of printing this map, in a brochure, should be taken into account when developing the dynamic map programming.

Contractor, in development of the interactive system, should also take into account that the hospital may want to expand the system to be able to be used over the internet with their web site as a future project.

4. Contractor will provide necessary electrical and data connections at the each location. Currently one location has available connections. See attached drawings for additional information.

E - COORDINATION BETWEEN DESIGNER/CONTRACTOR/VA

The VA will provide all information noting the locations of the departments and services and their location within the facility.

The designer will develop and provide the map art noting the locations of the services and the access routes. The designer will coordinate with the contractor regarding the construction, materials, size and assembly of the kiosk structure

The contractor will use the map art and information from the VA to create the digital interactive display and digitally show the path to each location from each kiosk.

The contractor will submit shop drawings of the kiosk and wall directory to the VA and the Designer for review and approval prior to production.

The contractor will submit a computer map art to the VA and the Designer for review and approval prior to production.

The contractor will submit computer routing pathways interface to destination to the VA and the Designer for review and approval prior to production.

F - INSTALLATION

Contractor will install the units in each location and make operable.

G - WARRANTY

Sign contractor will provide a 1 year warranty which will provide full service and repairs for all elements of the kiosks including the structure, the displays and all electronic components and systems.

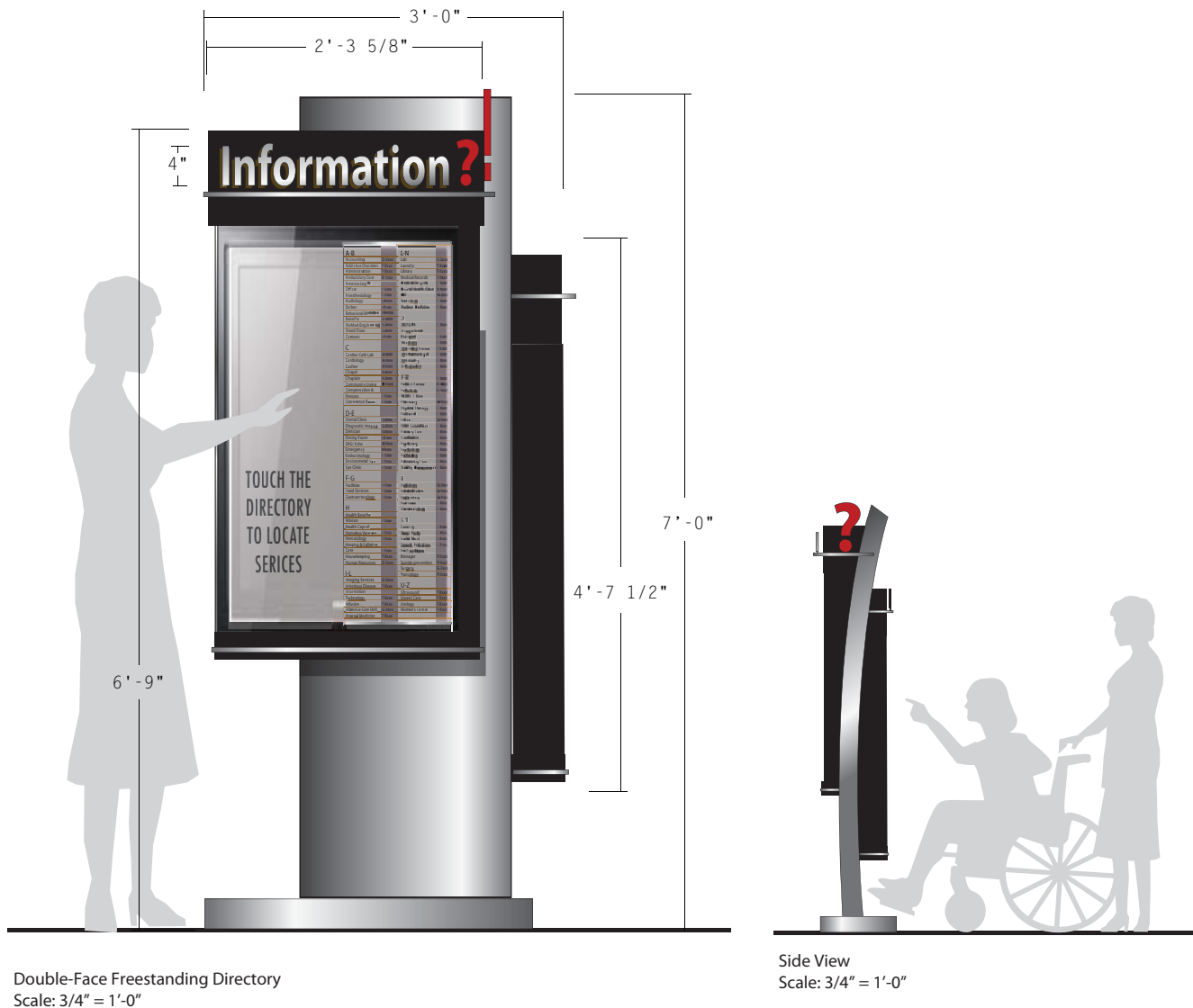
H - ONGOING SUPPORT

Sign contractor will provide a service agreement to provide 4 updates to the digital content (directory, map and wayfinding paths) during the first year of operation.

Sign contractor will provide a service agreement quotation to provide 4 updates to the digital content (directory, map and wayfinding paths) annually, after the first year of operation.

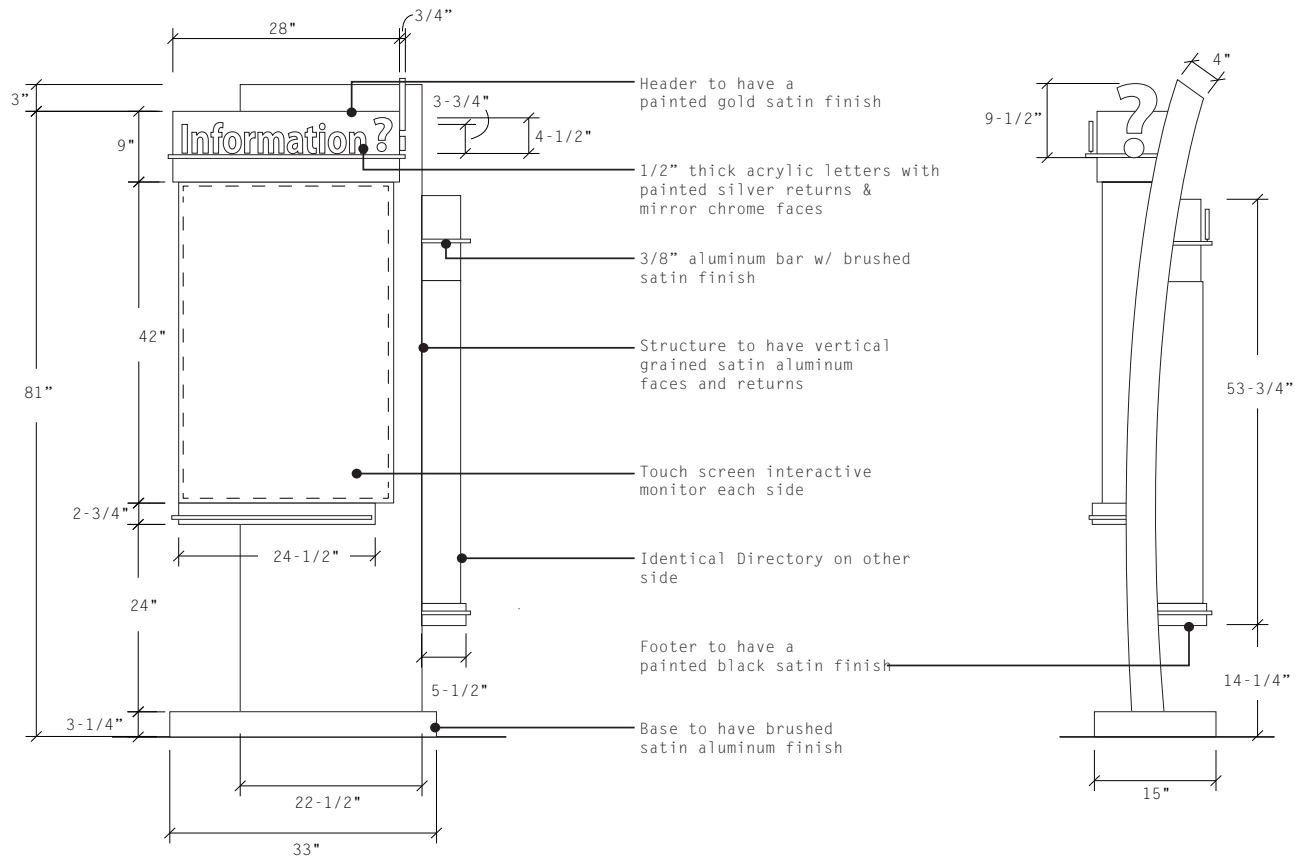
I - SCHEDULE

Kiosks, wall directory and interactive wayfinding shall be installed by the contractor/vendor and be fully operational within 6 months of award.



J - KIOSK DIRECTORY DRAWING

K - DIRECTORY DETAIL DRAWINGS



L - WALL DIRECTORY



Double-Face Freestanding Directory
Scale: 3/4" = 1'-0"



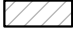











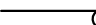
Side View
Scale: 3/4" = 1'-0"

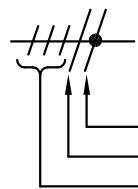
The illustration below shows the basic configuration of the hospital floor plans, corridors and elevators. The placements of departments is not current. This base art will be provided as a starting point toward the development of the necessary floor plans for use in the directory.



ELECTRICAL LEGEND

JANUARY 2013

	PANELBOARD: SURFACE MOUNTED
	PANELBOARD: FLUSH MOUNTED
	SWITCHBOARD OR DISTRIBUTION PANEL
	TRANSFORMER
	DUPLEX RECEPTACLE: 20A, 125V, NEMA 5-20, +18" AFF (UNO)
	DUPLEX RECEPTACLE: FLOOR MOUNTED
	QUAD RECEPTACLE: 20A, 125V, NEMA 5-20, +18" AFF (UNO)
	QUAD RECEPTACLE: FLOOR MOUNTED
	DATA / VOICE OUTLET: 18" AFF (UNO) - 1 VOICE, 1 DATA JACK, 2 BLANKS
	DATA / VOICE OUTLET: FLOOR MOUNTED
	TELEVISION OUTLET: 18" AFF (UNO)
	JUNCTION BOX (SIZE AS REQUIRED UNO)
	SHEET NOTE DESIGNATION
	CONDUIT/RACEWAY IN WALL OR ABOVE CEILING
	BREAK OR RUN CONTINUES



TICS = NO. OF #12 WIRES (UNO) IF MORE THAN TWO WITHIN RACEWAY. GROUNDING CONDUCTOR (NOT SHOWN) ALWAYS REQUIRED.

ISOLATED GROUNDING CONDUCTOR
NEUTRAL CONDUCTOR
PHASE CONDUCTOR(S)



BRANCH CIRCUIT (WHEN TIC MARKS ARE NOT SHOWN) = (1) PHASE, (1) NEUTRAL AND (1) GROUNDING CONDUCTOR



HOMERUN TO PANELBOARD OR DEVICE

© 2008-2013 PK ELECTRICAL, INC.



PK Electrical, Inc.

PROJECT:

VA RENO - WAYFINDING KIOSKS

BUILDING:

OVERALL

SHEET TITLE:

ELECTRICAL LEGEND

DATE:

06/26/13

SCALE:

NONE

DWG No:

EO.1

26-Jun-13			PANEL: (E) LEEGA						LOCATION: 1ST FLOOR ELEC RM 129			
#	DESCRIPTION	LOAD	BKR	CIR	A	B	C	CIR	BKR	LOAD	DESCRIPTION	#
M	EF-2	670	20	1	920			2	20	250	HOT WTR CONTROL TCP	E
M	AC-7 CONTROL	500	20	3		500		4			SPACE	
R	ROOFTOP GFI'S		25	5			0	6			SPACE	
E	F/A DOOR HOLDERS		30	7	0			8			SPACE	
M	SUMP PUMP	670	20	9		670		10			SPACE	
E	TIMECLOCK		20	11			0	12			SPACE	
E	BED PAN GRINDER		20/2	13	0			14			SPACE	
E	X		X	15		0		16			SPACE	
M1	P-1	320	20/3	17			320	18			SPACE	
M1	X	320	X	19	320			20			SPACE	
M1	X	320	X	21		320		22			SPACE	
E	VENDING MACHINE *	1500	20	23			1500	24			SPACE	
E	VENDING MACHINE **	1500	20	25	1500			26			SPACE	
R	WAITING RM **	1080	20	27		1080		28			SPACE	
R	HOUSKEEPING **	900	20	29			900	30			SPACE	
L	DIMMING LED CAN **	760	20	31	760			32			SPACE	
E	TRAP PRIMER **	250	20	33		250		34			SPACE	
E	WAITING ROOM TV(S) *	1000	20	35			1000	36			SPACE	
E	WAYFINDING KIOSK	500	20	37	500			38			SPACE	
	SPACE			39		0		40			SPACE	
	SPACE			41			0	42			SPACE	
					4000	2820	3720					
SIZE:		125A		GROUND:		STANDARD		NOTES:EXISTING PANEL				
VOLTAGE:		208		MOUNTING:		SURFACE		[1] PROVIDE NEW BREAKER TO				
PHASE:		3		ENCLOSURE:		NEMA 1		MATCH EXISTING MFGR AND				
WIRE:		4		# OF 1-POLE CIRCUITS		42		AIC RATING.				
LUGS:		MLO		CONNECTED KVA:		10.5						
BREAKER AIC RATING:		EXISTING		CONNECTED AMPS:		29.3						
BUS:		COPPER		NET KVA:		11.2						
NEUTRAL:		100%		NET AMPS:		31.1		SQUARE D PANELBOARD				

26-Jun-13			PANEL: (E) LNA1B						LOCATION: 2ND FLOOR G2504			
TYPE	DESCRIPTION	LOAD	BKR	CIR	A	B	C	CIR	BKR	LOAD	DESCRIPTION	TYPE
R	G2594 & G2595	1080	20	1	1440			2	20	360	[2] G2556 - SERVICE REC.	R
R	BREAK AREA 1D182	900	20	3		2260		4	20	1360	[2] G2559 - REFER. CONV.	R
R	BREAK AREA 1D182	900	20	5			1800	6	20	900	G2506, 2507, 2599, 2584	R
R	GFCI, ROOF	360	20	7	1560			8	20	1200	G2562-ULTRASOUND UNIT	E
R	G2570 - SOILED UTILITY	900	20	9		2100		10	20	1200	G2563-ULTRASOUND UNIT	E
R	G2569 - BONE DENS.	900	20	11			1980	12	20	1080	[2] G2562 - CONV. REC.	R
E	G2569 - MED EQUIPMENT	1600	20	13	2860			14	20	1260	[2] G2566 - FLUORO CONV.	R
E	G2568 - PATIENT SUPPORT	1200	20	15		2100		16	20	900	G2567 - CONV. REC.	R
R	G2540 - IR CONTR. RM.	1500	20	17			2580	18	20	1080	G2567 - WORKSTATIONS	R
R	G2542 - IR COMPONENT	360	20	19	1440			20	20	1080	[2] G2567 - WORKSTATIONS	R
R	G2568 - X-RAY	900	20	21		1980		22	20	1080	[2] G2567 - WORKSTATIONS	R
R	G2544 - HEAD WALL	1500	20	23			2400	24	20	900	[2] G2572 - CONV. REC.	R
R	G2544 - PATIENT PREP	900	20	25	1620			26	20	720	[2] G2577 - CONV. REC.	R
R	[2] G2543, G2544	1080	20	27		1980		28	20	900	[2] G2577 - WORKSTATION	R
R	[2] G2545	540	20	29			1740	30	20	1200	[2] G2582 - PCR	R
E	[1] WAYFINDING KIOSK	500	20	31	1400			32	20	900	[2] G2582 - CONV REC.	R
R	[2] G2546 - TEAM RM	1260	20	33		1800		34	20	540	[2] G2576, G2691, G2581	R
R	[2] G2548, G2549	1080	20	35			1800	36	20	720	[2] G2568 - X-RAY	R
R	[2] G2550, G2551	900	20	37	1800			38	20	900	[2] G2577 - CONV. REC.	R
R	[2] G2555, G2598a, CORR.	1080	20	39		2340		40	20	1260	[2] G2567 - CONV. REC.	R
R	[2] G2552, G2553	900	20	41			1980	42	20	1080	[2] G2563, G2564 - CONV.	R
					12120	14560	14280					
COPPER BUS SIZE:		250		GROUND:		STANDARD		NOTES:				
VOLTAGE:		208		MOUNTING:		SURFACE		[1] PROVIDE NEW BREAKER TO				
PHASE:		3		ENCLOSURE:		NEMA 1		MATCH MFGR & AIC RATING				
WIRE:		4		# OF 1-POLE CIRCUITS		42		[2] FUTURE DICE PROJECT				
LUGS:		MLO		CONNECTED KVA:		41.0		SIEMENS: P1C42ML250CTS				
BREAKER AIC RATING:		22K		CONNECTED AMPS:		113.7						
NEUTRAL:		100%		NET KVA:		28.3						
FEEDER OCPD SIZE:		225		NET AMPS:		78.6						

© 2008-2011 PK ELECTRICAL, INC.



PK Electrical, Inc.

PROJECT:

VA RENO - WAYFINDING KIOSKS

BUILDING:

OVERALL

SHEET TITLE:

PANEL SCHEDULES

DATE:

06/26/13

SCALE:

NONE

DWG No:

EO.2

LASER PRINTED TELECOM
OUTLET LABELS.

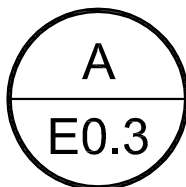
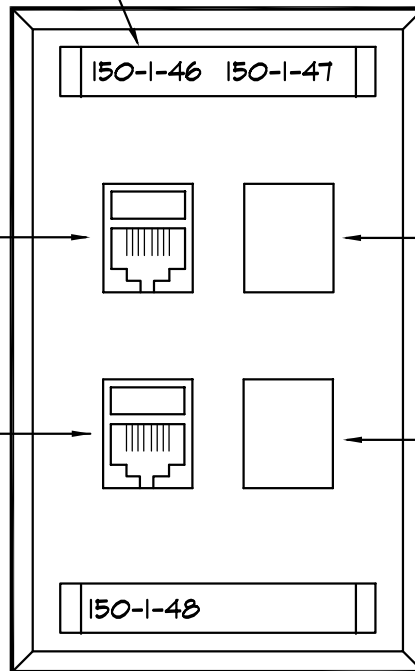
4-PORT FACEPLATE
W/TOP AND BOTTOM
LABEL HOLDERS
W/PLASTIC INSERTS
(VERIFY COLOR
W/ARCHITECT).

CATEGORY 6 DATA
JACK, BLUE, T568B
PINOUT.

CATEGORY 6 VOICE JACK,
BLUE, T568B PINOUT.

BLANK

BLANK



TELECOM OUTLET

SCALE: NONE



PK Electrical, Inc.

PROJECT:

VA RENO - WAYFINDING KIOSKS

BUILDING:

DETAILS

SHEET TITLE:

TELECOM OUTLET

DATE:

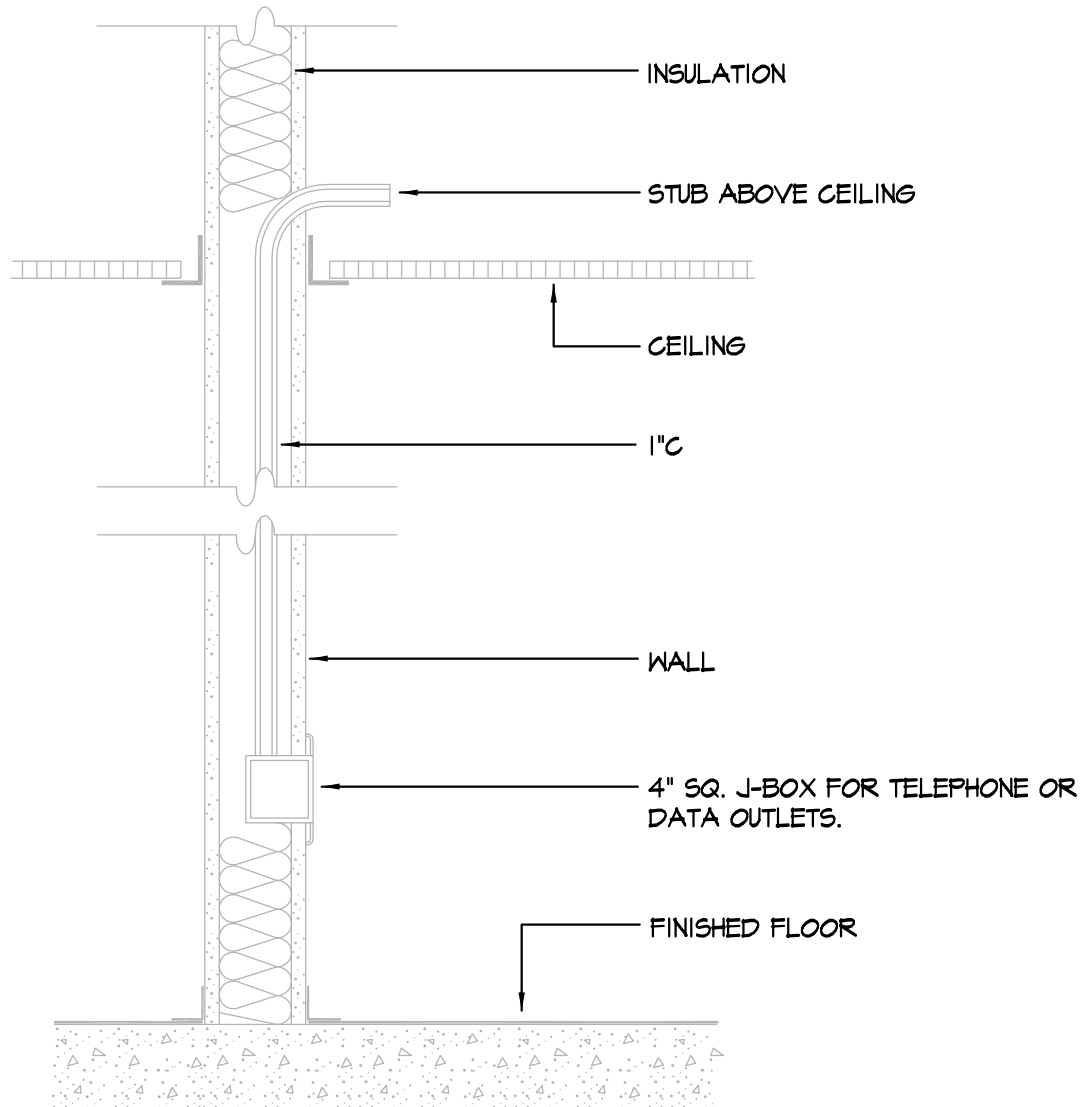
06/26/13

SCALE:

NONE

DWG No:

E0.3



A
E0.4

TELECOM OUTLET BOX ROUGH-IN

SCALE: NONE



PK Electrical, Inc.

PROJECT:

VA RENO - WAYFINDING KIOSKS

BUILDING:

DETAILS

SHEET TITLE:

TELECOM OUTLET BOX ROUGH-IN

DATE:

06/26/13

SCALE:

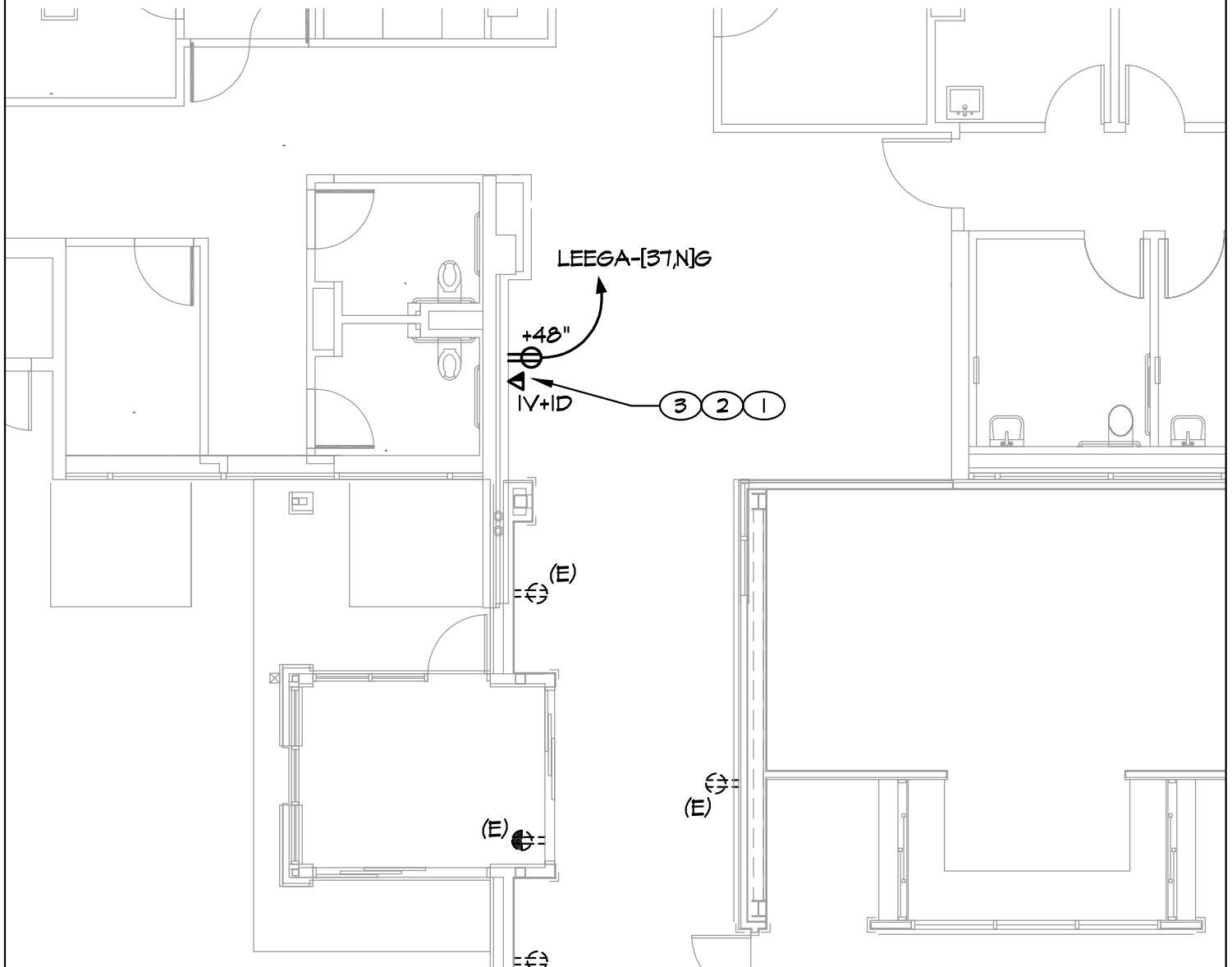
NONE


DWG No:

E0.4

SHEET NOTES

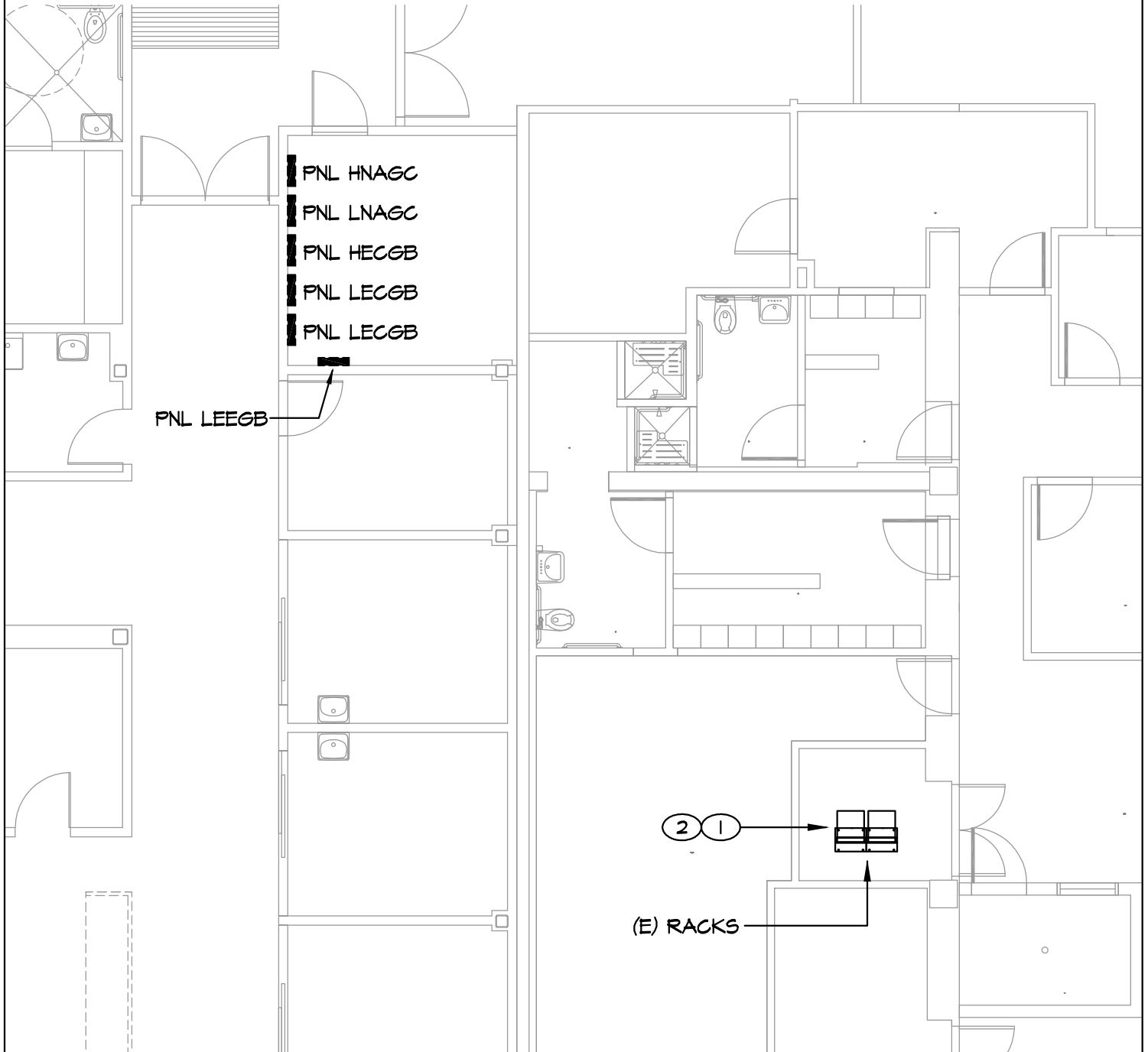
- ① AT ALL TELECOM OUTLETS INSTALL 1" CONDUIT TO ACCESSIBLE CEILING SPACE. INSTALL J-HOOKS SPACED AT 4'-0" O.C. FROM THIS POINT TO THE NEAREST WIRE BASKET TRAY. SEE DETAILS ON SHEETS E0.3 AND E0.4 FOR TYPICAL TELECOM OUTLET ROUGH-IN.
- ② INSTALL QTY OF CAT 6 VOICE AND DATA DROPS TO EACH TELECOM OUTLET AS SHOWN ON THE DRAWINGS. FOR EXAMPLE "2V+2D" = 2 VOICE AND 2 DATA DROPS. VOICE CABLES SHALL BE PLENUM RATED WITH A BLUE JACKET. DATA CABLES SHALL BE PLENUM RATED WITH BLUE JACKET. TERMINATE ALL VOICE AND DATA CABLES ON CAT 6 DATA JACKS AT THE WORK AREA OUTLETS AND ON CAT 6 PATCH PANELS IN THE TELECOM ROOM.
- ③ LOCATE TELECOM OUTLETS DIRECTLY ADJACENT TO ELECTRICAL OUTLETS TYPICAL. RECEPTACLE AND DATA JACK SHALL BE MOUNTED AT 48" AFF.



 PK Electrical, Inc.	PROJECT:	DATE:
	VA RENO - WAYFINDING KIOSKS	06/26/13
	BUILDING:	SCALE:
	MENTAL HEALTH / EMERGENCY	1/8" = 1'-0"
	SHEET TITLE:	DWG No:
	FIRST FLOOR ENLARGED PLAN	E1.2

SHEET NOTES

- ① EXISTING FIBER TERMINATION CABINET(S).
- ② EXISTING CAT 5E PATCH PANEL(S).



PK Electrical, Inc.

PROJECT:

VA RENO - WAYFINDING KIOSKS

BUILDING:

MENTAL HEALTH / EMERGENCY

SHEET TITLE:

FIRST FLOOR ENLARGED PLAN

DATE:

06/26/13

SCALE:

1/8" = 1'-0"

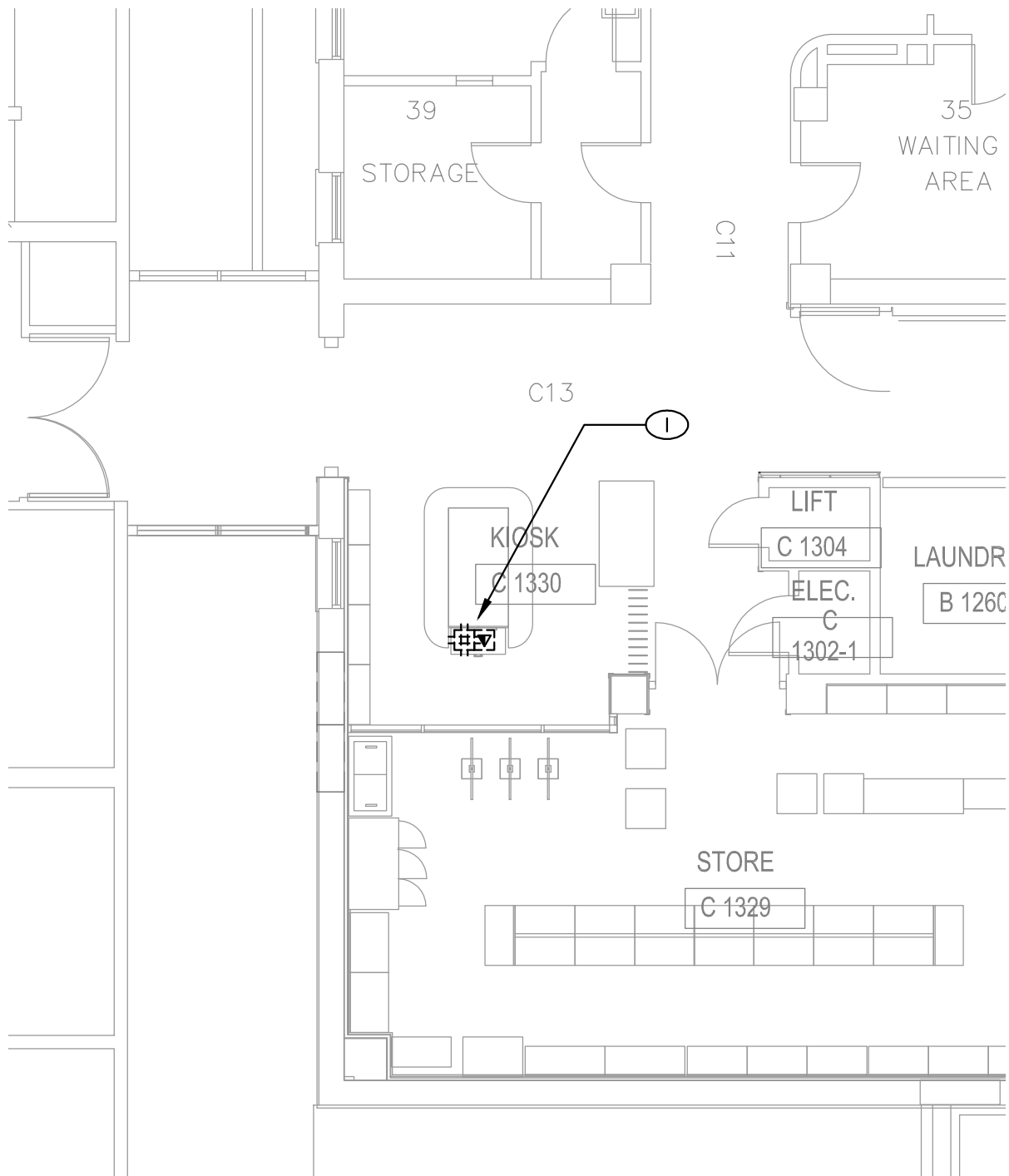
DWG No:

E1.3

SHEET NOTES

①

EXISTING FLOOR BOX WITH POWER AND DATA INSTALLED DURING CANTEEN PROJECT.



PK Electrical, Inc.

PROJECT:

VA RENO - WAYFINDING KIOSKS

BUILDING:

CANTEEN

SHEET TITLE:

FIRST FLOOR ENLARGED PLAN

DATE:

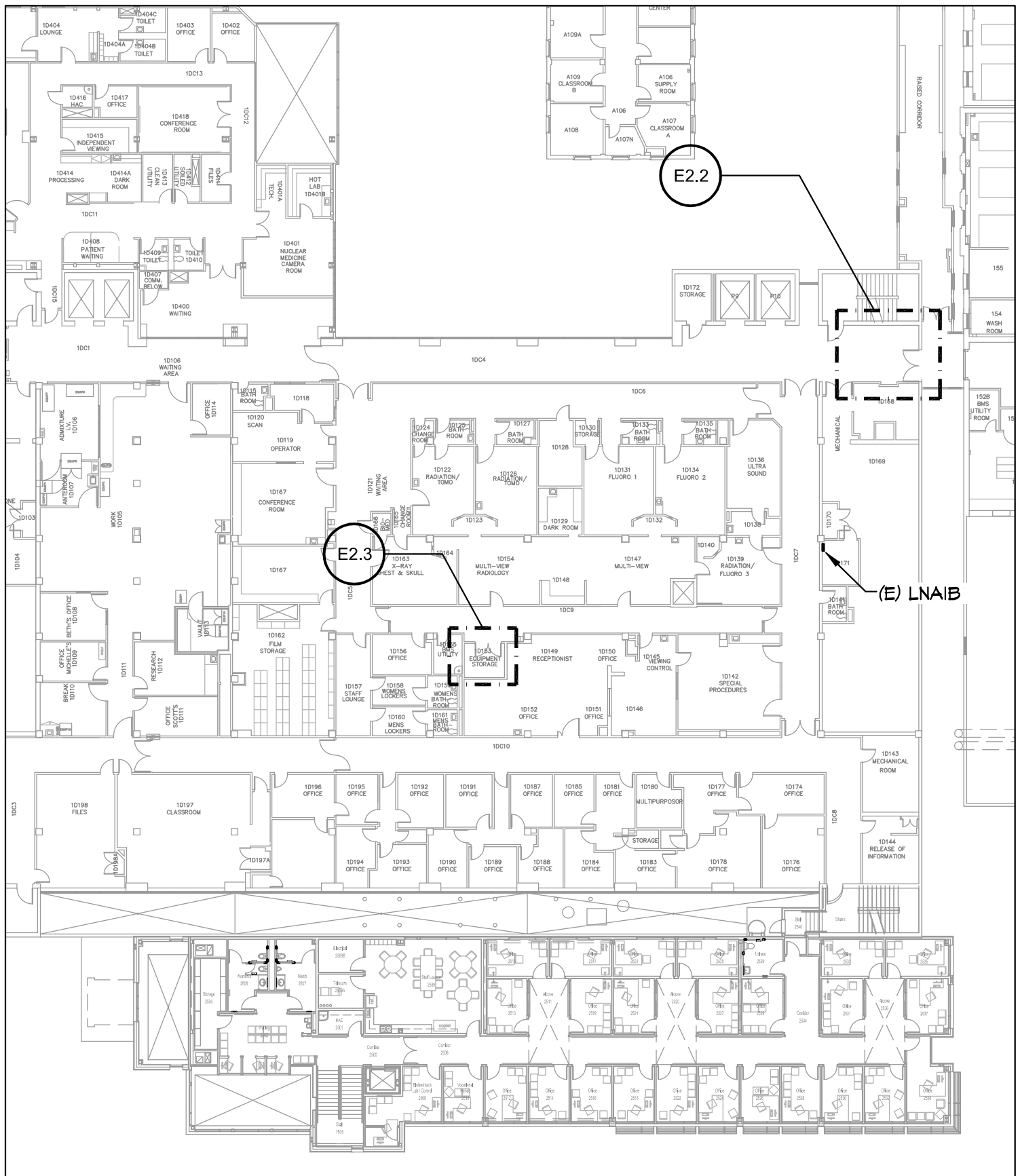
06/26/13


SCALE:

1/8" = 1'-0"

DWG No:

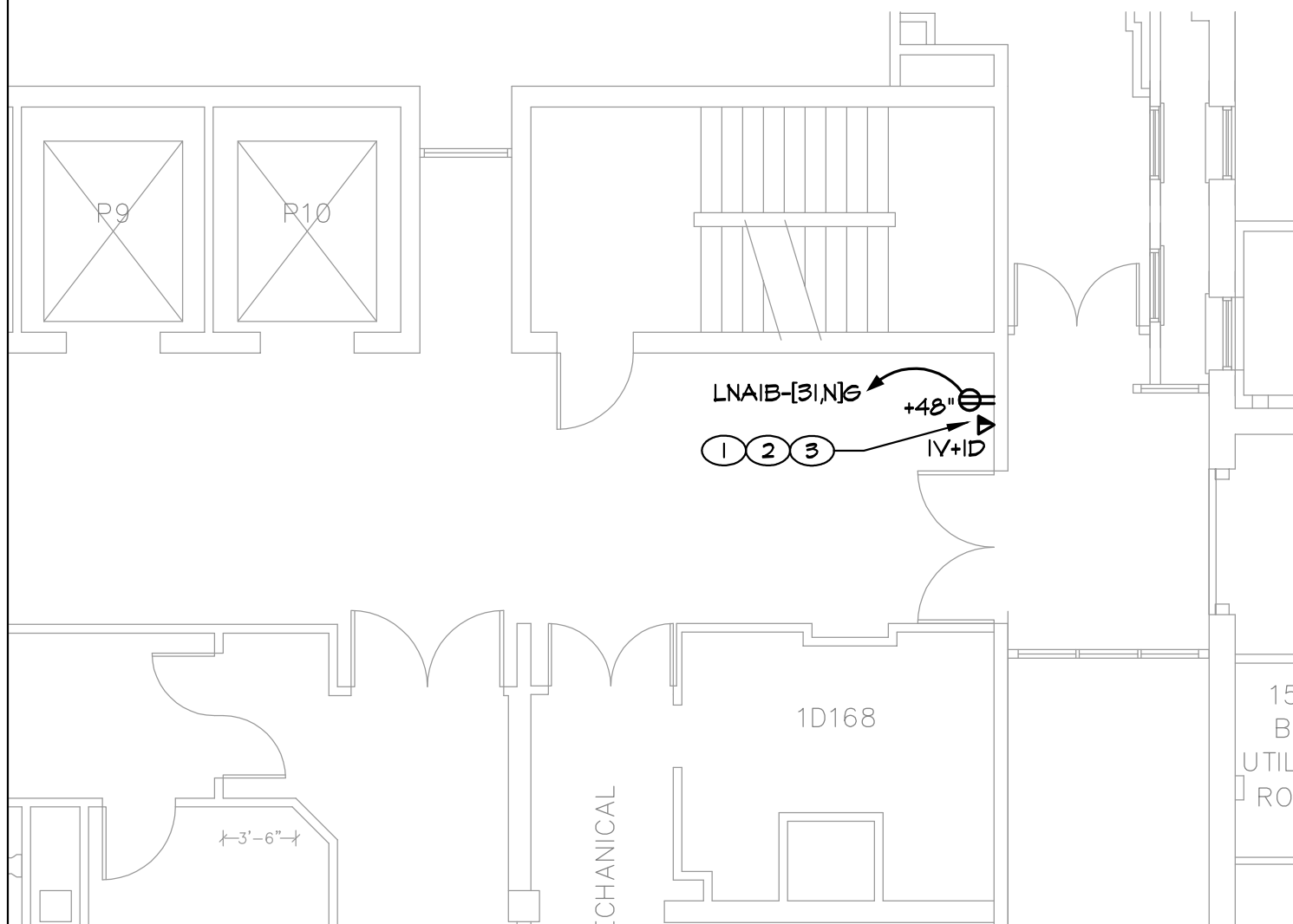
E1.4



 <p>PK Electrical, Inc.</p>	PROJECT: VA RENO - WAYFINDING KIOSKS	DATE: 06/26/13
	BUILDING: BUILDING ID	SCALE: 1"=30'-0"
	SHEET TITLE: SECOND FLOOR OVERALL PLAN	DWG No: E2.1

SHEET NOTES

- ① AT ALL TELECOM OUTLETS INSTALL 1" CONDUIT TO ACCESSIBLE CEILING SPACE. INSTALL J-HOOKS SPACED AT 4'-0" O.C. FROM THIS POINT TO THE NEAREST WIRE BASKET TRAY. SEE DETAILS ON SHEETS E0.3 AND E0.4 FOR TYPICAL TELECOM OUTLET ROUGH-IN.
- ② INSTALL QTY OF CAT 6 VOICE AND DATA DROPS TO EACH TELECOM OUTLET AS SHOWN ON THE DRAWINGS. FOR EXAMPLE "2V+2D" = 2 VOICE AND 2 DATA DROPS. VOICE CABLES SHALL BE PLENUM RATED WITH A BLUE JACKET. DATA CABLES SHALL BE PLENUM RATED WITH BLUE JACKET. TERMINATE ALL VOICE AND DATA CABLES ON CAT 6 DATA JACKS AT THE WORK AREA OUTLETS AND ON CAT 6 PATCH PANELS IN THE TELECOM ROOM.
- ③ LOCATE TELECOM OUTLETS DIRECTLY ADJACENT TO ELECTRICAL OUTLETS TYPICAL. RECEPTACLE AND DATA JACK SHALL BE MOUNTED AT 48" AFF.
- ④ CONNECT NEW RECEPTACLE TO EXISTING CIRCUIT MADE AVAILABLE FROM DEMOLITION OF EXISTING WATER COOLER.



PK Electrical, Inc.

PROJECT:

VA RENO - WAYFINDING KIOSKS

BUILDING:

BUILDING ID - KIOSK LOCATION

SHEET TITLE:

SECOND FLOOR ELECTRICAL PLAN

DATE:

06/26/13

SCALE:

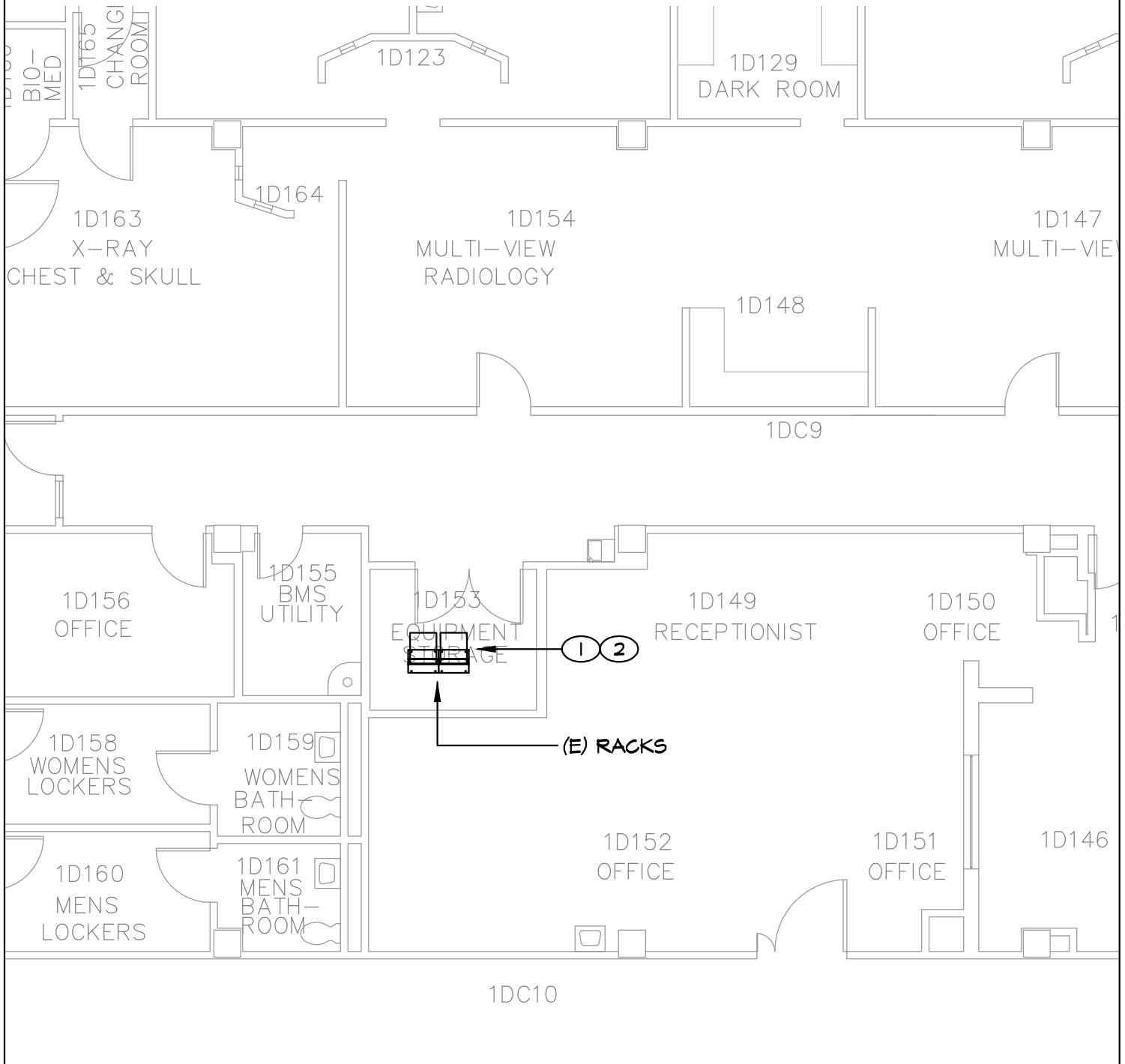
1/8" = 1'-0"

DWG No:

E2.2

SHEET NOTES

- ① EXISTING FIBER TERMINATION CABINET(S).
- ② EXISTING CAT 5E PATCH PANEL(S).



PK Electrical, Inc.

PROJECT:

VA RENO - WAYFINDING KIOSKS

BUILDING:

BUILDING ID - TELECOM ROOM

SHEET TITLE:

SECOND FLOOR ELECTRICAL PLAN

DATE:

06/26/13

SCALE:

1/8" = 1'-0"

DWG No:

E2.3