

FA100 FIRE ALARM PLAN - GROUND FLOOR
 1/8" = 1'
 HATCHED AREA IS EXISTING AND NO WORK UNDER THIS SCOPE.

CIRCUIT ROUTING FOR SLC AND SPEAKERS HAS NOT BEEN SHOWN. CONTRACTOR TO ESTABLISH MOST EFFICIENT ROUTE BASED ON THEIR PRODUCT.

COORDINATE WITH SPRINKLER PLANS FOR TAMPER SWITCH(S) AT CONNECTIONS TO EXISTING SYSTEM

HATCHED AREA IS EXISTING AND NO WORK UNDER THIS SCOPE.

EXPANSION JOINT, PROVIDE CONDUIT OFFSET OF AT LEAST TWO FEET AT THIS LOCATION TO ALLOW MOVEMENT.

COORDINATE RELOCATION OF EXISTING PULL STATION, STROBE, AND SPEAKER WITH NEW DOORS AND WALLS AT CONNECTION TO EXISTING BUILDING. MOVE DEVICES SO THEY ARE NOT BLOCKED BY NEW DOOR SWING.

NO.	DESCRIPTION	DATE

APPROVED: MEDICAL CENTER DIRECTOR	APPROVED: FACILITY PLANNER	APPROVED: SERVICE CHIEF	APPROVED: SERVICE CHIEF	APPROVED:
APPROVED: ASSOCIATE DIRECTOR	APPROVED: CHIEF ENGINEER	APPROVED: SERVICE CHIEF	APPROVED: SERVICE CHIEF	APPROVED:
APPROVED: CHIEF OF STAFF	APPROVED: WOMEN VET. PROG. COORD.	APPROVED: SERVICE CHIEF	APPROVED: SERVICE CHIEF	APPROVED:

DRAWING TITLE
FIRE ALARM PLAN - GROUND FLOOR

PROJECT TITLE
**EUGENE J. TOWBIN HEALTHCARE CENTER
 NEW SUBSTANCE ABUSE
 BUILDING**

BUILDING NUMBER
172

CHECKED
V. POELLOT

DRAWN
S. LACEY

LOCATION
 C.A.V.H.S., LR DIVISION

DATE
01 FEBRUARY 2014

V.A.C. NUMBER
VA 256-P-1272

FIG. PROJECT NUMBER
84410

DRAWING NO.
FA100

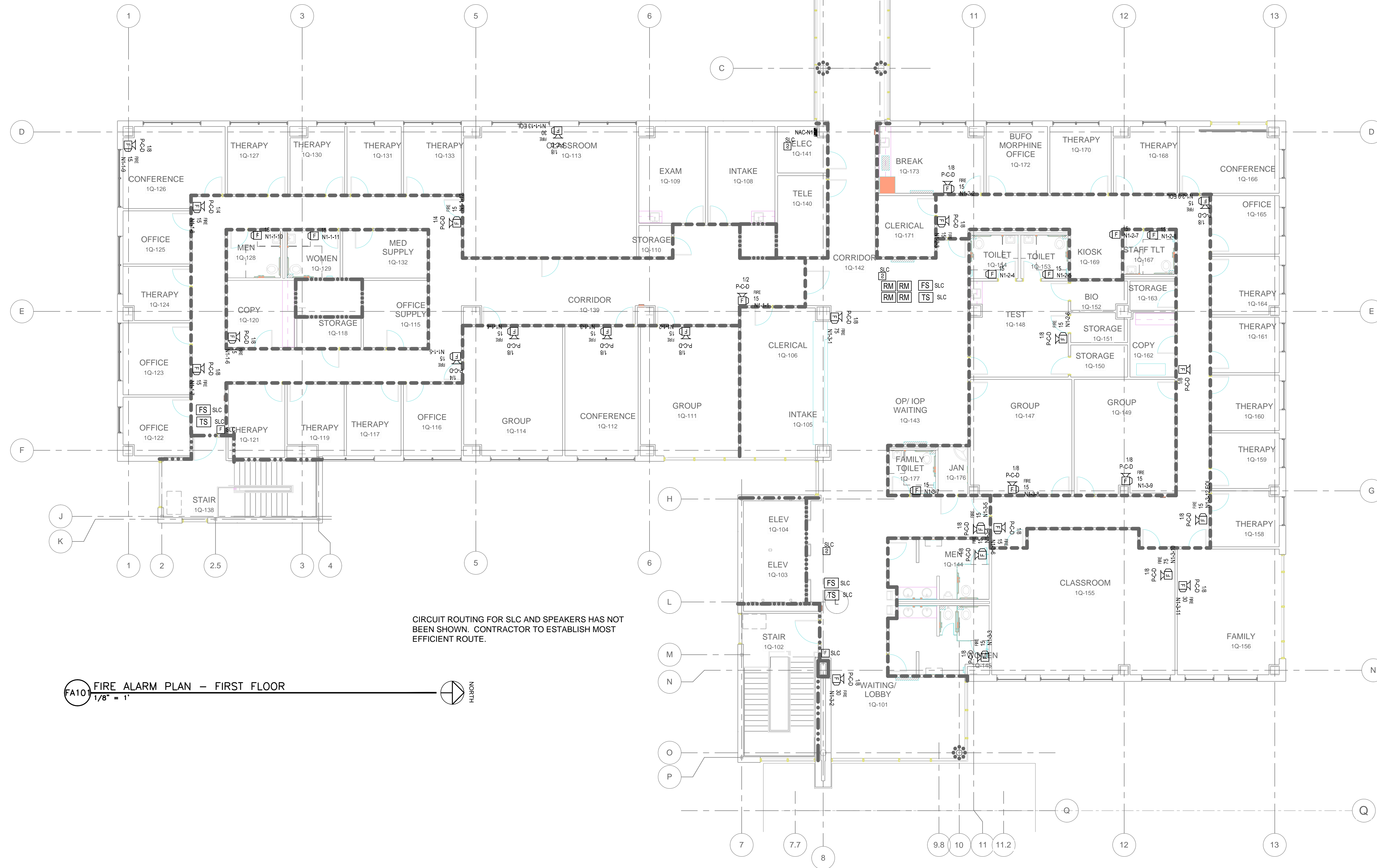
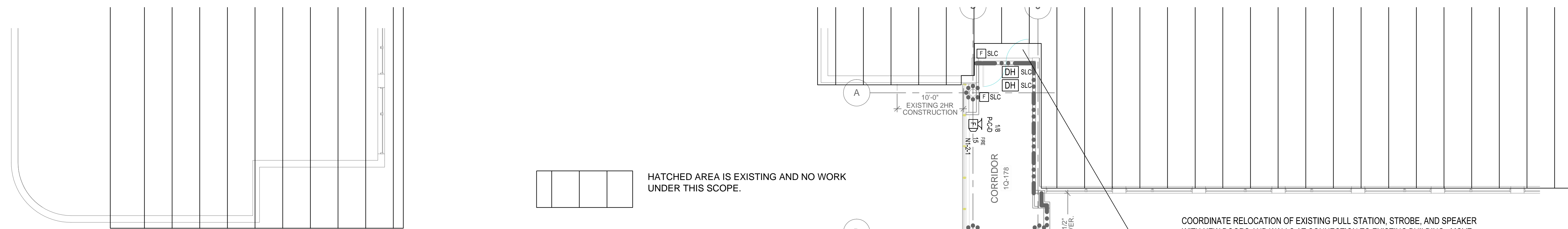
80 of 167

Lacey
 Fire Protection
 Engineering, LLC
 www.LaceyFPE.com

OFFICIAL SEAL
 EUGENE J. TOWBIN HEALTHCARE CENTER
 SCOTT WADE
 LACEY
 2-01-2014
 VIRGINIA

Office of Facilities

DEPARTMENT OF VETERANS AFFAIRS



FA10 FIRE ALARM PLAN - FIRST FLOOR
1/8" = 1'

NO.	DESCRIPTION	DATE

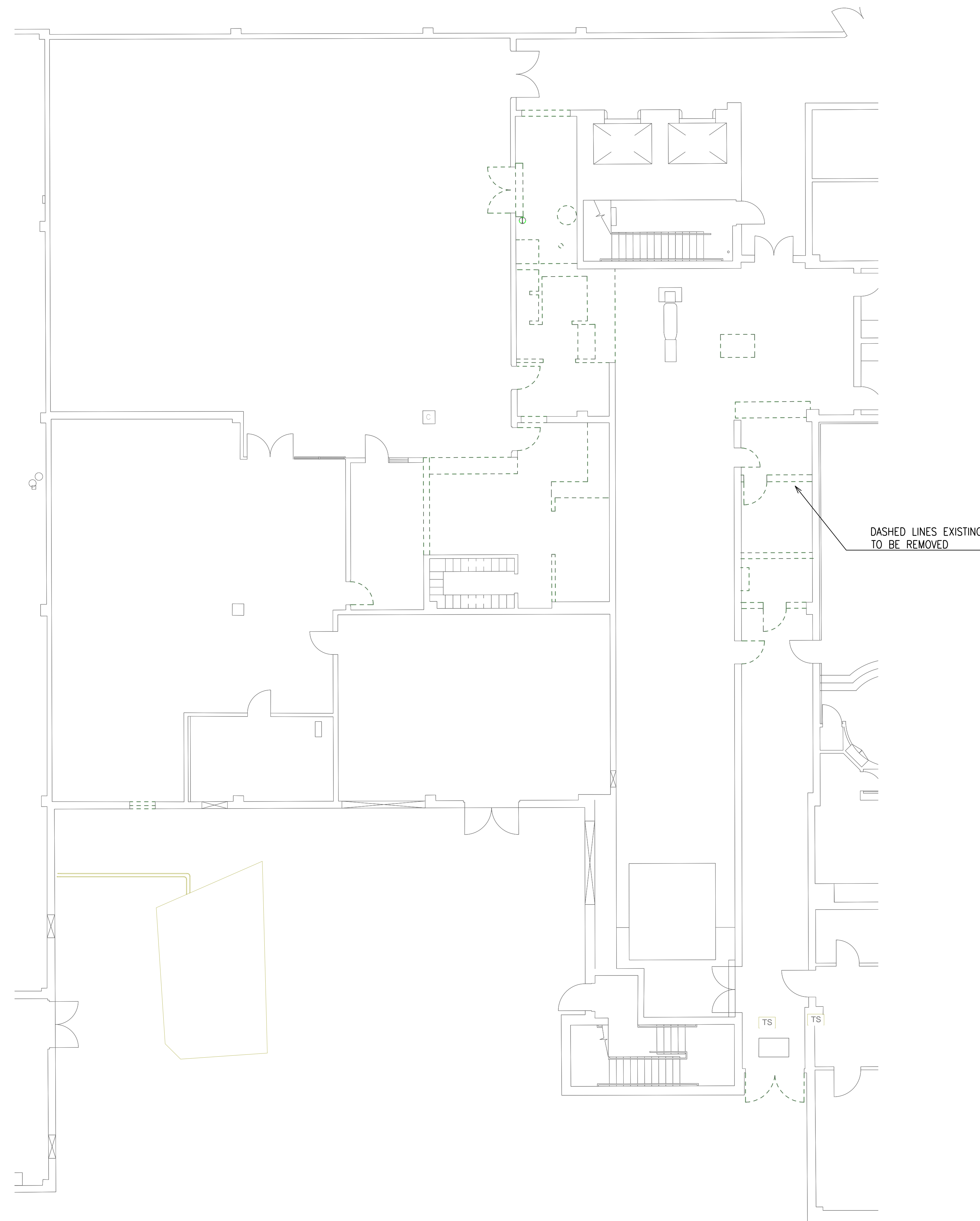
APPROVED: MEDICAL CENTER DIRECTOR	APPROVED: FACILITY PLANNER	APPROVED: SERVICE CHIEF	APPROVED: SERVICE CHIEF	APPROVED:
APPROVED: ASSOCIATE DIRECTOR	APPROVED: CHIEF ENGINEER	APPROVED: SERVICE CHIEF	APPROVED: SERVICE CHIEF	APPROVED:
APPROVED: CHIEF OF STAFF	APPROVED: WOMEN VET. PROG. COORD.	APPROVED: SERVICE CHIEF	APPROVED: SERVICE CHIEF	APPROVED:

DRAWING TITLE FIRE ALARM PLAN - FIRST FLOOR	PROJECT TITLE EUGENE J. TOWBIN HEALTHCARE CENTER NEW SUBSTANCE ABUSE BUILDING	DATE 01 FEBRUARY 2014
	BUILDING NUMBER 172	CHECKED V. POELLOT
	LOCATION C.A.V.H.S., LR DIVISION	DRAWN S. LACEY
		DRAWING NO. FA101
		81 of 167

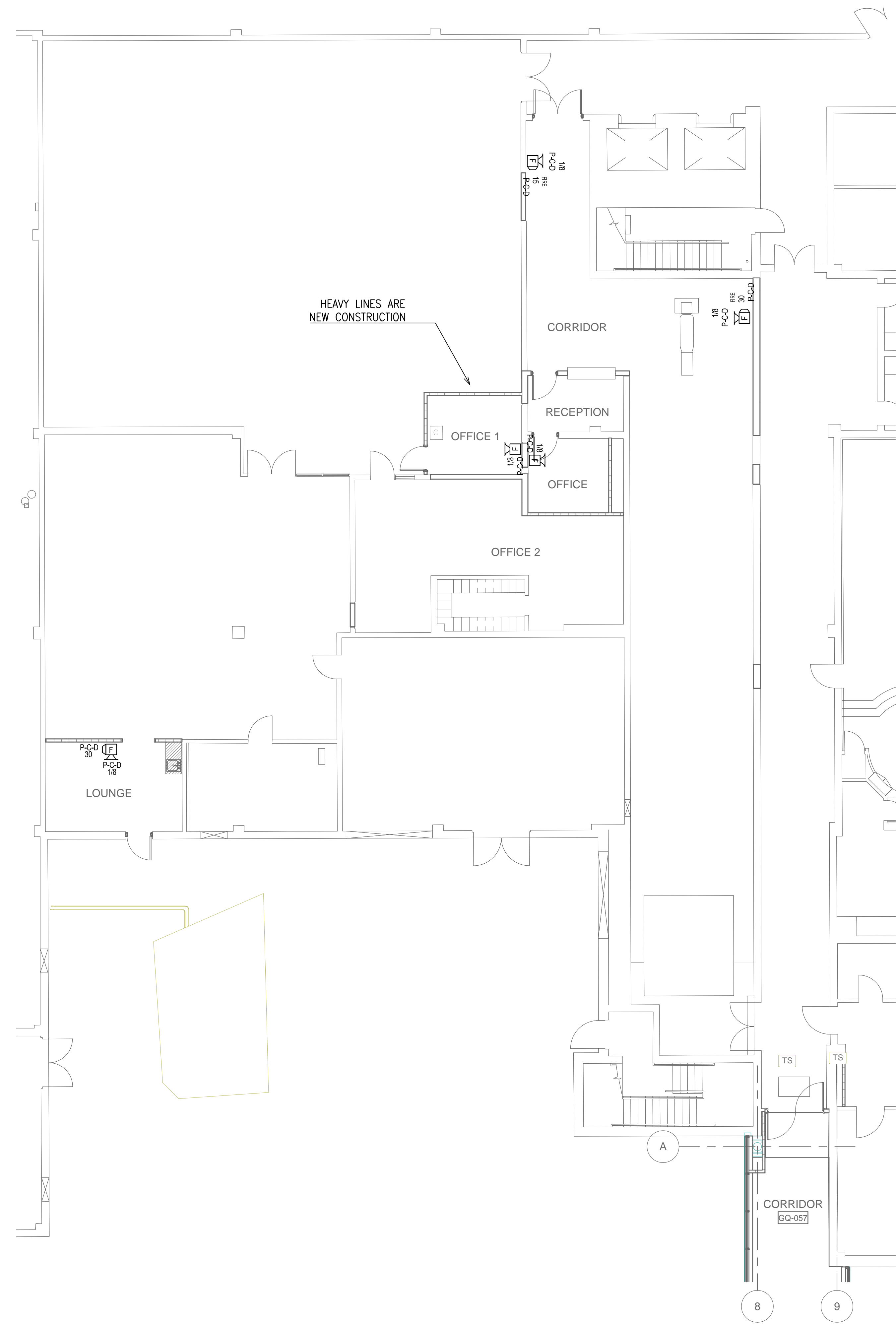
Lacey
Fire Protection
Engineering, LLC
www.LaceyFPE.com

Office of Facilities

DEPARTMENT OF VETERANS AFFAIRS



1 EXISTING GROUND FLOOR DEMOLITION - FIRE ALARM
1/8" = 1'



2 EXISTING GROUND FLOOR RENOVATION - FIRE ALARM
1/8" = 1'

THIS DRAWING REPRESENTS EXISTING AREAS THAT ARE UNDERGOING A RENOVATION. COORDINATE WITH EXISTING FIRE ALARM DEVICES AND CIRCUITS (NOT SHOWN). CONTRACTOR TO INTEGRATE NEW DEVICES WITH EXISTING CIRCUITS. PROVIDE NEW PANELS AND/OR EXPANSION BOARDS INTO EXISTING SYSTEMS AS REQUIRED BASED ON DEVICES SHOWN.

NO.	DESCRIPTION	DATE

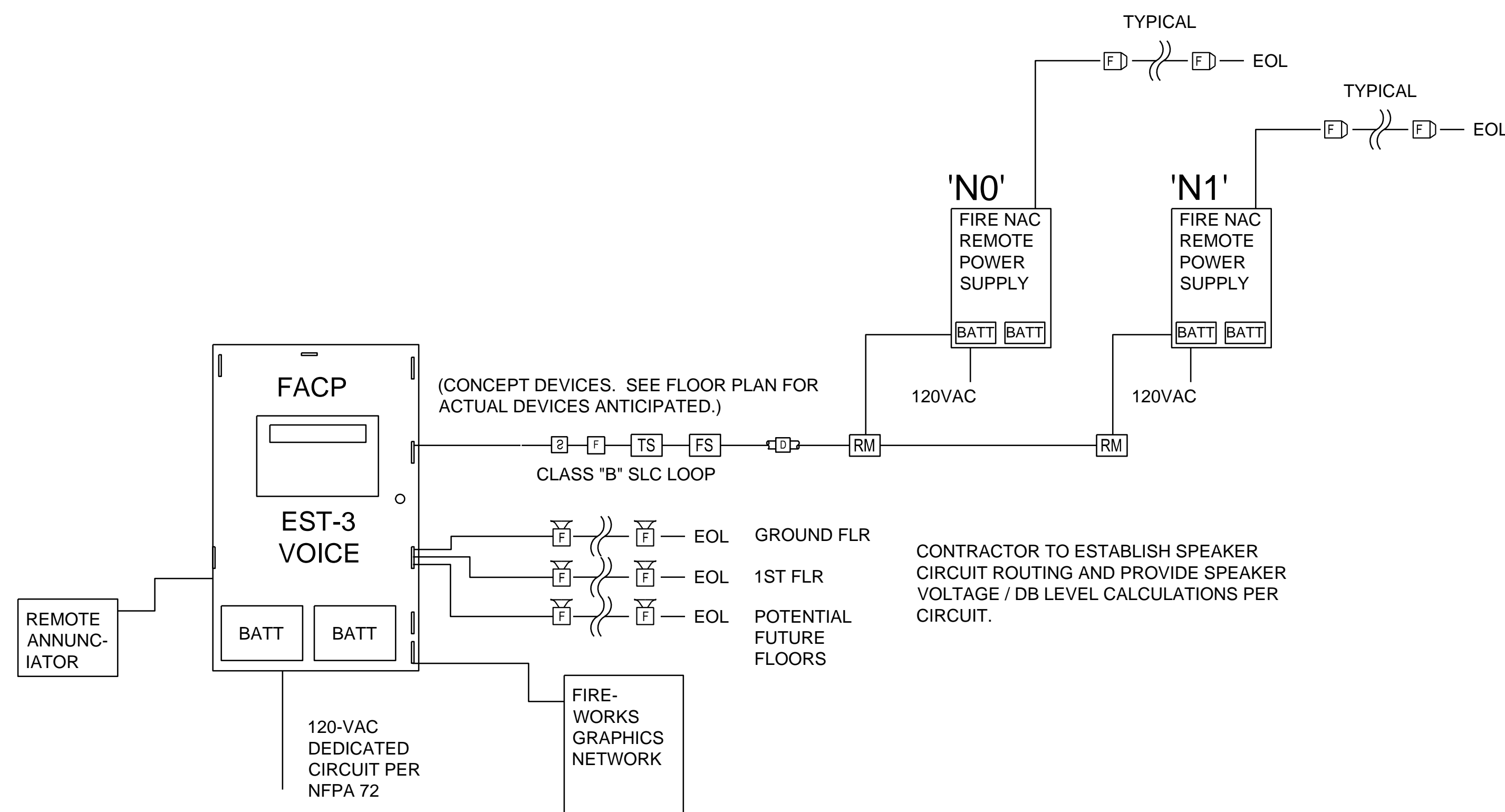
APPROVED: MEDICAL CENTER DIRECTOR	APPROVED: FACILITY PLANNER	APPROVED: SERVICE CHIEF	APPROVED: SERVICE CHIEF	APPROVED:
APPROVED: ASSOCIATE DIRECTOR	APPROVED: CHIEF ENGINEER	APPROVED: SERVICE CHIEF	APPROVED: SERVICE CHIEF	APPROVED:
APPROVED: CHIEF OF STAFF	APPROVED: WOMEN VET. PROG. COORD.	APPROVED: SERVICE CHIEF	APPROVED: SERVICE CHIEF	APPROVED:

DRAWING TITLE EXISTING RENOVATION - FIRE ALARM PLAN		PROJECT TITLE EUGENE J. TOWBIN HEALTHCARE CENTER NEW SUBSTANCE ABUSE BUILDING		DATE 01 FEBRUARY 2014
BUILDING NUMBER 172		CHECKED V. POELLOT	DRAWN S. LACEY	VA PROJECT NUMBER VA 256-P-1272
LOCATION C.A.V.H.S., LR DIVISION		FPCG PROJECT NUMBER 84410		DRAWING NO. FA300
				82 of 167

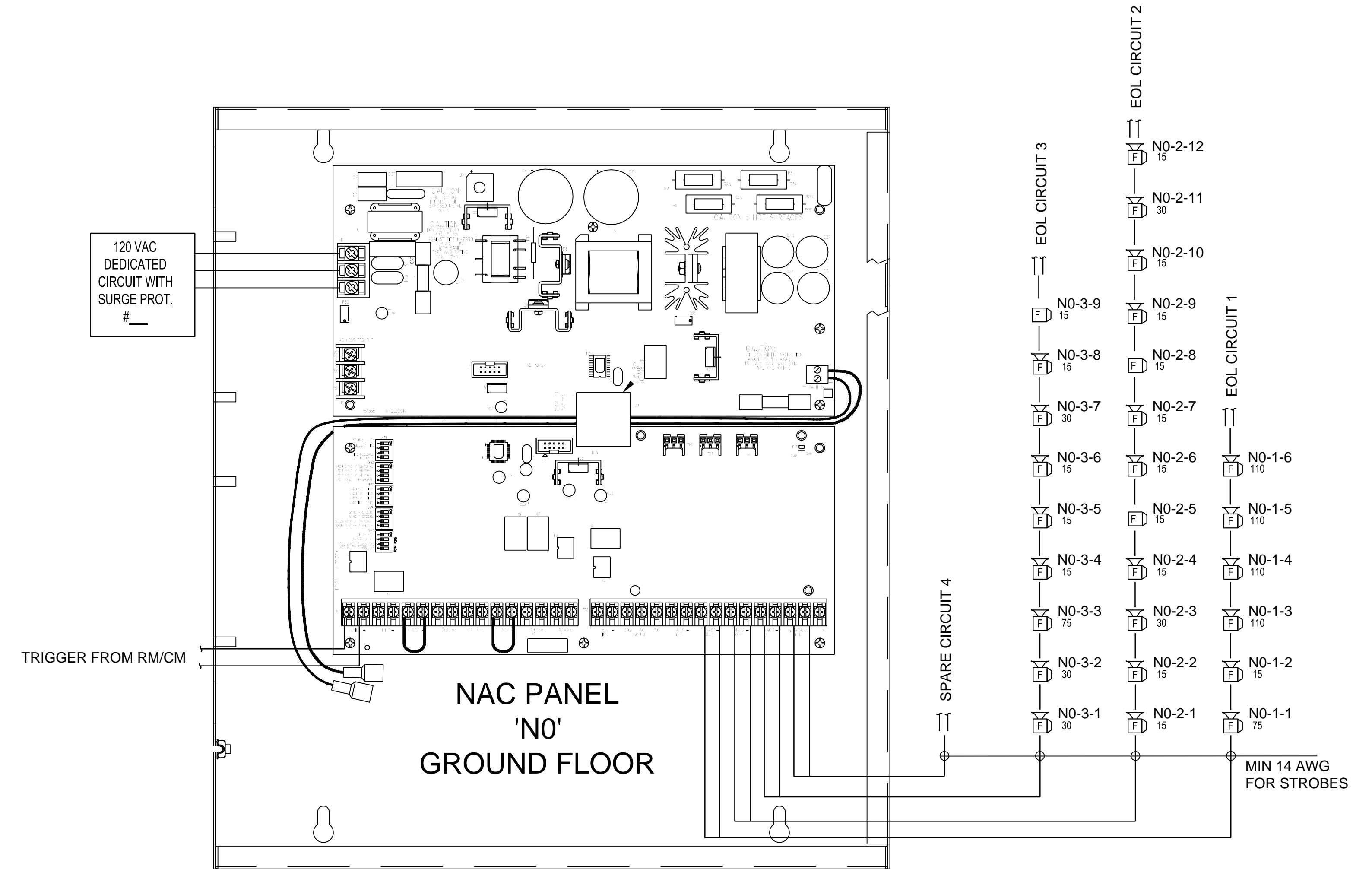
Lacey
Fire Protection
Engineering, LLC
www.LaceyFPE.com

Office of Facilities

DEPARTMENT OF VETERANS AFFAIRS

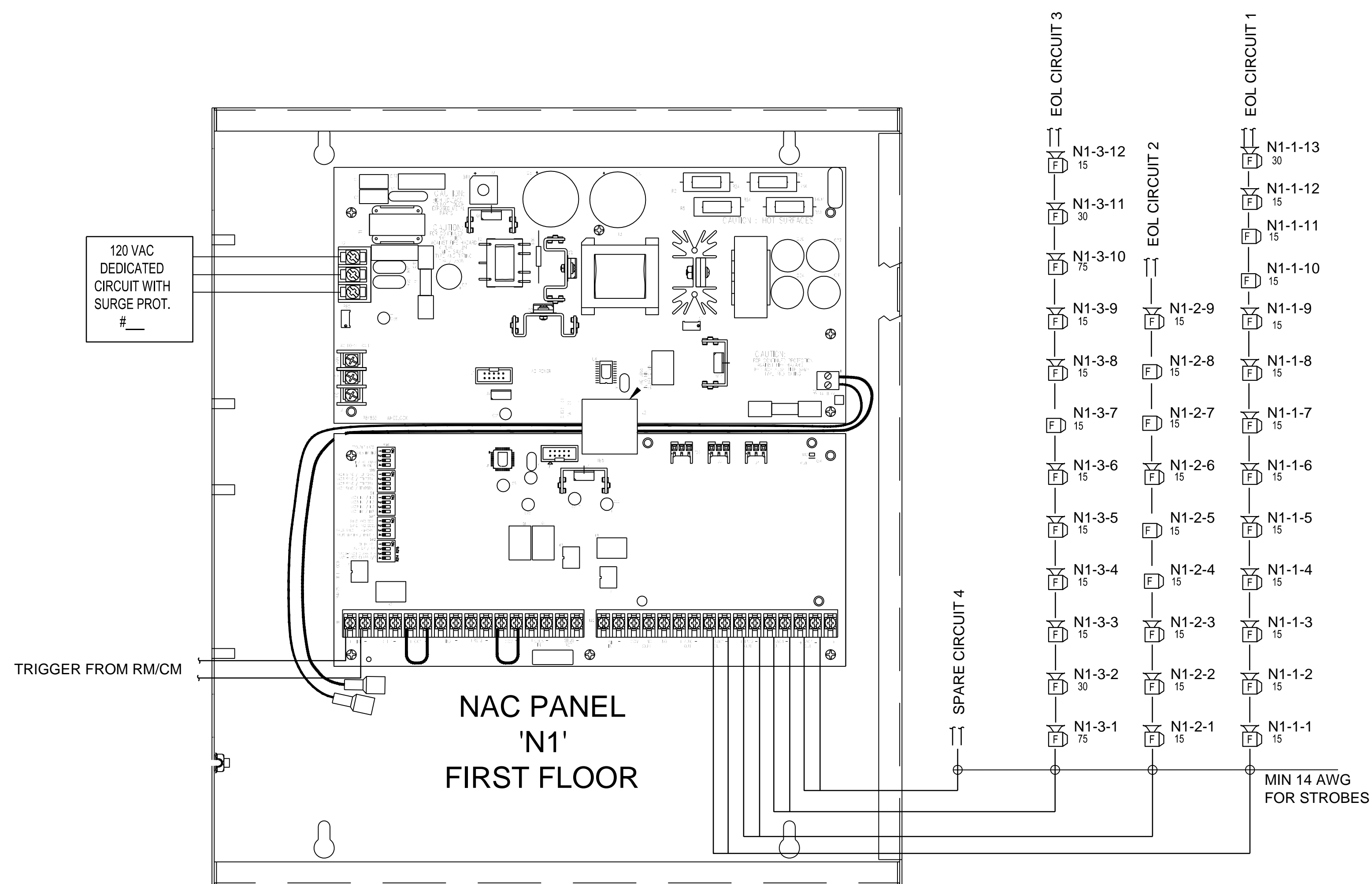


1 FIRE ALARM RISER CONCEPT
NOT TO SCALE



2 FIRE ALARM NAC CONCEPT "N0"
NOT TO SCALE

MAGNETIC DOOR HOLD-OPENS SHALL BE POWERED USING AUX CIRCUITS ON NAC PANELS. PROVIDE RELAY AT DOORS TO RELEASE UPON ALARM. CONTRACTOR TO ESTABLISH ROUTING.



3 FIRE ALARM NAC CONCEPT 'N1'
NOT TO SCALE

NO.	DESCRIPTION	DATE

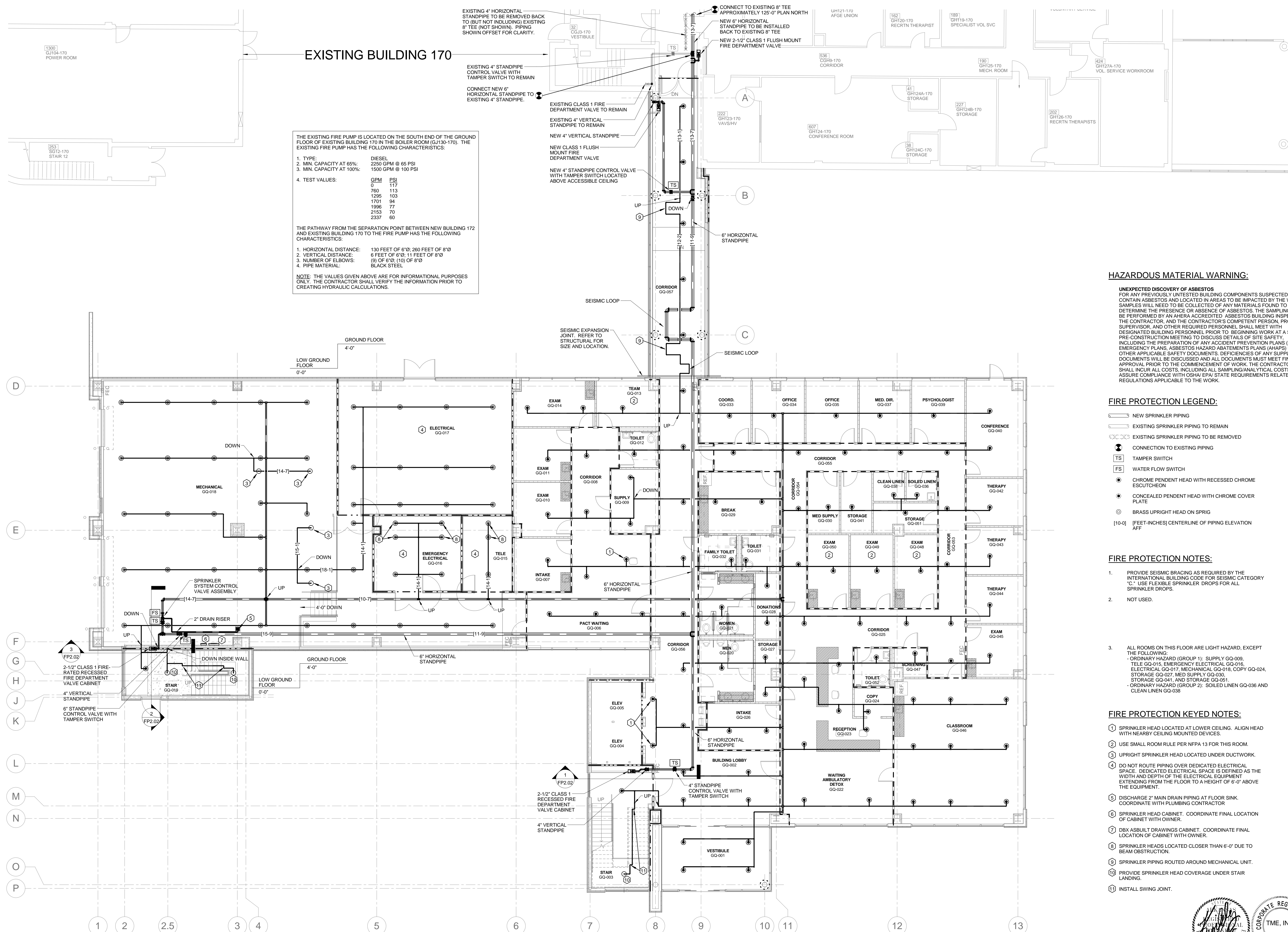
APPROVED: MEDICAL CENTER DIRECTOR	APPROVED: FACILITY PLANNER	APPROVED: SERVICE CHIEF	APPROVED: SERVICE CHIEF	APPROVED:
APPROVED: ASSOCIATE DIRECTOR	APPROVED: CHIEF ENGINEER	APPROVED: SERVICE CHIEF	APPROVED: SERVICE CHIEF	APPROVED:
APPROVED: CHIEF OF STAFF	APPROVED: WOMEN VET. PROG. COORD.	APPROVED: SERVICE CHIEF	APPROVED: SERVICE CHIEF	APPROVED:

DRAWING TITLE FIRE ALARM DETAILS		PROJECT TITLE EUGENE J. TOWBIN HEALTHCARE CENTER NEW SUBSTANCE ABUSE BUILDING		DATE 01 FEBRUARY 2014
BUILDING NUMBER 172		CHECKED V. POELLLOT	DRAWN S. LACEY	V.A. PROJECT NUMBER VA 256-P-1272
LOCATION C.A.V.H.S., LR DIVISION		DRAWING NO. FA601		PCG PROJECT NUMBER 84410
		Dwg 83 of 167		

Lacey
Fire Protection
Engineering, LLC
www.LaceyFPE.com

Office of Facilities

DEPARTMENT OF VETERANS AFFAIRS



THE EXISTING FIRE PUMP IS LOCATED ON THE SOUTH END OF THE GROUND FLOOR OF EXISTING BUILDING 170 IN THE BOILER ROOM (GJ130-170). THE EXISTING FIRE PUMP HAS THE FOLLOWING CHARACTERISTICS:

1. TYPE:	DIESEL
2. MIN. CAPACITY AT 65%:	2250 GPM @ 65 PSI
3. MIN. CAPACITY AT 100%:	1500 GPM @ 100 PSI
4. TEST VALUES:	
	GPM PSI
	0 117
	750 113
	1295 103
	1701 94
	1996 77
	2153 70
	2337 60

THE PATHWAY FROM THE SEPARATION POINT BETWEEN NEW BUILDING 172 AND EXISTING BUILDING 170 TO THE FIRE PUMP HAS THE FOLLOWING CHARACTERISTICS:

1. HORIZONTAL DISTANCE:	130 FEET OF 6"Ø; 260 FEET OF 8"Ø
2. VERTICAL DISTANCE:	6 FEET OF 6"Ø; 11 FEET OF 8"Ø
3. NUMBER OF ELBOWS:	(9) OF 8"Ø; (10) OF 6"Ø
4. PIPE MATERIAL:	BLACK STEEL

NOTE: THE VALUES GIVEN ABOVE ARE FOR INFORMATIONAL PURPOSES ONLY. THE CONTRACTOR SHALL VERIFY THE INFORMATION PRIOR TO CREATING HYDRAULIC CALCULATIONS.

HAZARDOUS MATERIAL WARNING:

UNEXPECTED DISCOVERY OF ASBESTOS
 FOR ANY PREVIOUSLY UNTESTED BUILDING COMPONENTS SUSPECTED TO CONTAIN ASBESTOS AND LOCATED IN AREAS TO BE IMPACTED BY THE WORK, SAMPLES WILL NEED TO BE COLLECTED OF ANY MATERIALS FOUND TO DETERMINE THE PRESENCE OR ABSENCE OF ASBESTOS. THE SAMPLING MUST BE PERFORMED BY AN AHERA ACCREDITED ASBESTOS BUILDING INSPECTOR, THE CONTRACTOR, AND THE CONTRACTOR'S COMPETENT PERSON, PROJECT SUPERVISOR, AND OTHER REQUIRED PERSONNEL SHALL MEET WITH DESIGNATED BUILDING PERSONNEL PRIOR TO BEGINNING WORK AT A SAFETY PRE-CONSTRUCTION MEETING TO DISCUSS DETAILS OF SITE SAFETY, INCLUDING THE PREPARATION OF ANY ACCIDENT PREVENTION PLANS (AAPs), EMERGENCY PLANS, ASBESTOS HAZARD ABATEMENTS PLANS (AHAPs) OR ANY OTHER APPLICABLE SAFETY DOCUMENTS. DEFICIENCIES OF ANY SUPPLIED DOCUMENTS WILL BE DISCUSSED AND ALL DOCUMENTS MUST MEET FINAL APPROVAL PRIOR TO THE COMMENCEMENT OF WORK. THE CONTRACTOR SHALL INCUR ALL COSTS, INCLUDING ALL SAMPLING/ANALYTICAL COSTS TO ASSURE COMPLIANCE WITH OSHA/ EPA/ STATE REQUIREMENTS RELATED TO REGULATIONS APPLICABLE TO THE WORK.

- FIRE PROTECTION LEGEND:**
- NEW SPRINKLER PIPING
 - - - EXISTING SPRINKLER PIPING TO REMAIN
 - XXX EXISTING SPRINKLER PIPING TO BE REMOVED
 - ⊙ CONNECTION TO EXISTING PIPING
 - TS TAMPER SWITCH
 - FS WATER FLOW SWITCH
 - CHROME PENDENT HEAD WITH RECESSED CHROME ESCUTCHEON
 - CONCEALED PENDENT HEAD WITH CHROME COVER PLATE
 - ⊙ BRASS UPRIGHT HEAD ON SPRIG
 - [10'-0] [FEET-INCHES] CENTERLINE OF PIPING ELEVATION AFF

- FIRE PROTECTION NOTES:**
1. PROVIDE SEISMIC BRACING AS REQUIRED BY THE INTERNATIONAL BUILDING CODE FOR SEISMIC CATEGORY "C". USE FLEXIBLE SPRINKLER DROPS FOR ALL SPRINKLER DROPS.
 2. NOT USED.
 3. ALL ROOMS ON THIS FLOOR ARE LIGHT HAZARD, EXCEPT THE FOLLOWING:
 - ORDINARY HAZARD (GROUP 1): SUPPLY GG-009, TELE GG-015, EMERGENCY ELECTRICAL GG-016, ELECTRICAL GG-017, MECHANICAL GG-018, COPY GG-024, STORAGE GG-027, MED SUPPLY GG-030, STORAGE GG-041, AND STORAGE GG-051.
 - ORDINARY HAZARD (GROUP 2): SOILED LINEN GG-036 AND CLEAN LINEN GG-038

- FIRE PROTECTION KEYED NOTES:**
- ① SPRINKLER HEAD LOCATED AT LOWER CEILING. ALIGN HEAD WITH NEARBY CEILING MOUNTED DEVICES.
 - ② USE SMALL ROOM RULE PER NFPA 13 FOR THIS ROOM.
 - ③ UPRIGHT SPRINKLER HEAD LOCATED UNDER DUCTWORK.
 - ④ DO NOT ROUTE PIPING OVER DEDICATED ELECTRICAL SPACE. DEDICATED ELECTRICAL SPACE IS DEFINED AS THE WIDTH AND DEPTH OF THE ELECTRICAL EQUIPMENT EXTENDING FROM THE FLOOR TO A HEIGHT OF 6'-0" ABOVE THE EQUIPMENT.
 - ⑤ DISCHARGE 2" MAIN DRAIN PIPING AT FLOOR SINK. COORDINATE WITH PLUMBING CONTRACTOR.
 - ⑥ SPRINKLER HEAD CABINET. COORDINATE FINAL LOCATION OF CABINET WITH OWNER.
 - ⑦ DBX ASBUILT DRAWINGS CABINET. COORDINATE FINAL LOCATION OF CABINET WITH OWNER.
 - ⑧ SPRINKLER HEADS LOCATED CLOSER THAN 6'-0" DUE TO BEAM OBSTRUCTION.
 - ⑨ SPRINKLER PIPING ROUTED AROUND MECHANICAL UNIT.
 - ⑩ PROVIDE SPRINKLER HEAD COVERAGE UNDER STAIR LANDING.
 - ⑪ INSTALL SWING JOINT.

GROUND FLOOR PLAN - FIRE PROTECTION
 1/8" = 1'-0"

NO.	DESCRIPTION	DATE
1	Revision 1	3/7/14

APPROVED: MEDICAL CENTER DIRECTOR	APPROVED: FACILITY PLANNER	APPROVED: SERVICE CHIEF	APPROVED: SERVICE CHIEF	APPROVED:
APPROVED: ASSOCIATE DIRECTOR	APPROVED: CHIEF ENGINEER	APPROVED: SERVICE CHIEF	APPROVED: SERVICE CHIEF	APPROVED:
APPROVED: CHIEF OF STAFF	APPROVED: WOMEN VET. PROG. COORD.	APPROVED: SERVICE CHIEF	APPROVED: SERVICE CHIEF	APPROVED:

DRAWING TITLE: **GROUND FLOOR PLAN - FIRE PROTECTION**

PROJECT TITLE: **EUGENE J. TOWBIN HEALTHCARE CENTER NEW SUBSTANCE ABUSE BUILDING**

BUILDING NUMBER: **172**

CHECKED: **GAG** DRAWN: **JAB**

LOCATION: **C.A.V.H.S., LR DIVISION**

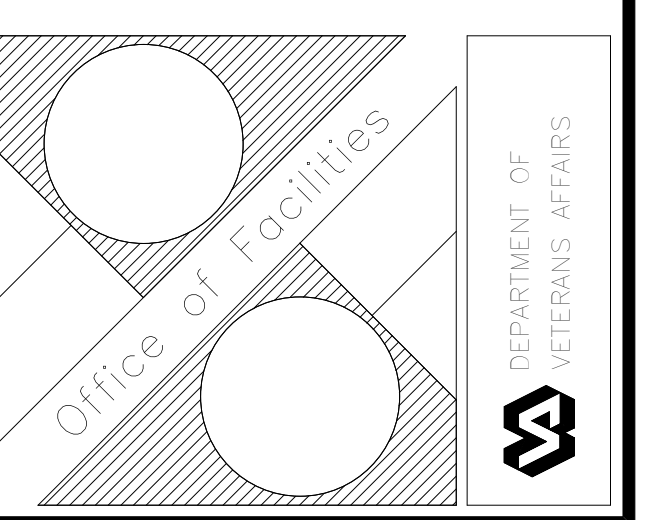
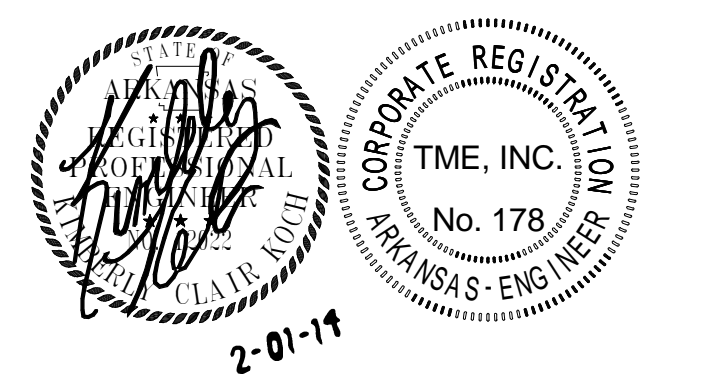
DATE: **01 FEBRUARY 2014**

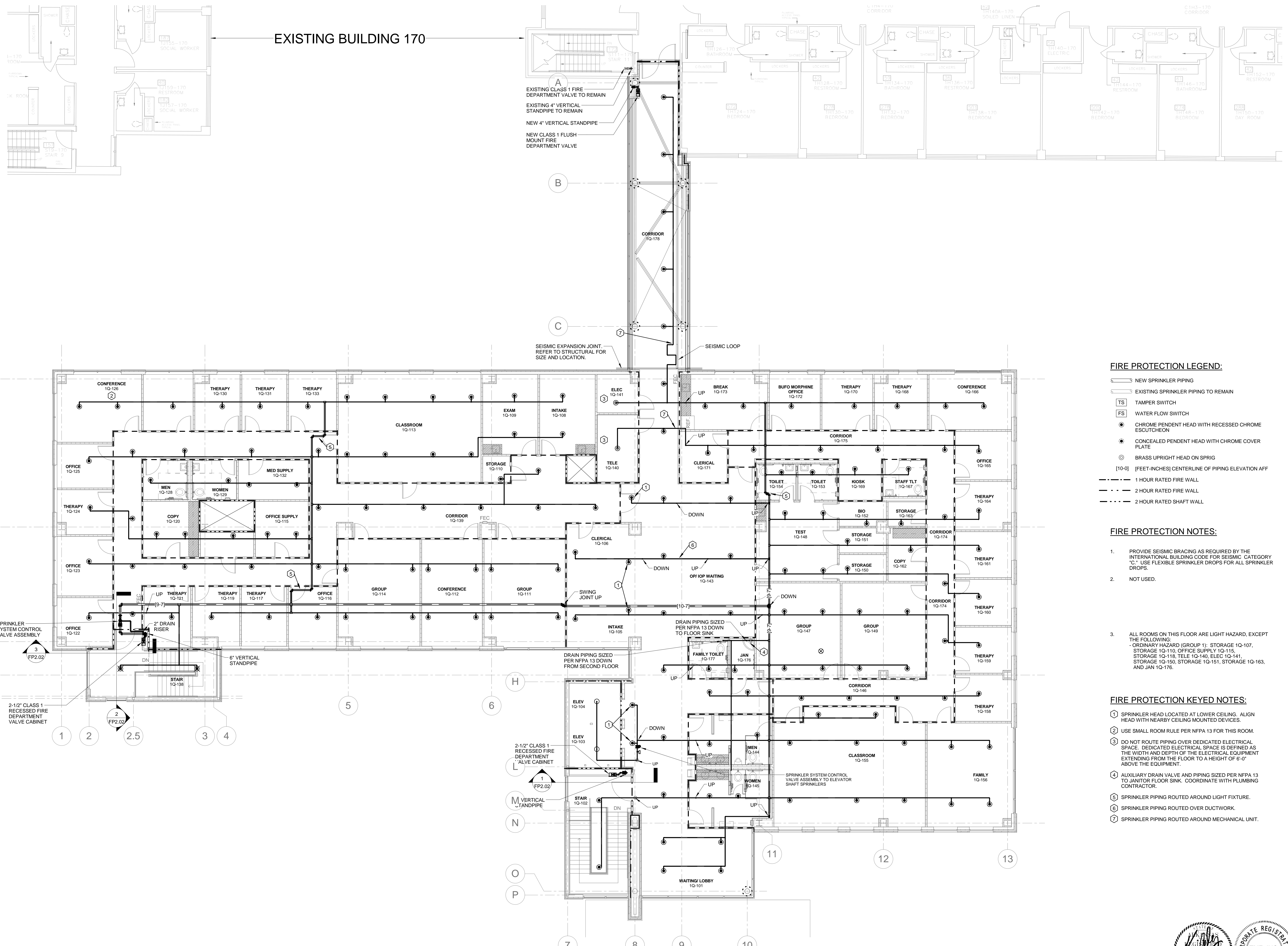
VA PROJECT NUMBER: **VA 256 - P - 1272**

TRC PROJECT NUMBER: **84410**

DRAWING NO.: **FP1.01**

Sheet **84** of **167**





EXISTING BUILDING 170

A
EXISTING CLASS 1 FIRE DEPARTMENT VALVE TO REMAIN
EXISTING 4" VERTICAL STANDPIPE TO REMAIN
NEW 4" VERTICAL STANDPIPE
NEW CLASS 1 FLUSH MOUNT FIRE DEPARTMENT VALVE

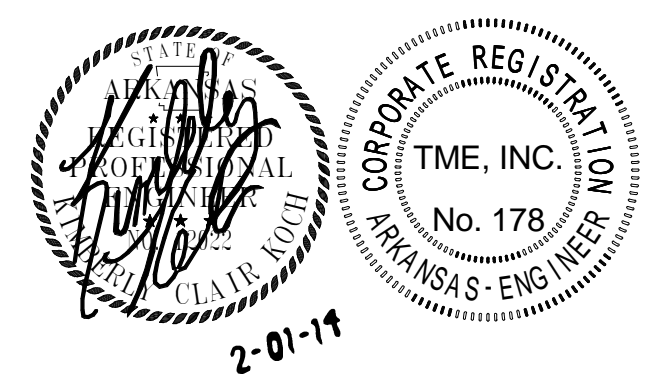
B
C
SEISMIC EXPANSION JOINT REFER TO STRUCTURAL FOR SIZE AND LOCATION.
SEISMIC LOOP

- FIRE PROTECTION LEGEND:**
- NEW SPRINKLER PIPING
 - EXISTING SPRINKLER PIPING TO REMAIN
 - TS TAMPER SWITCH
 - FS WATER FLOW SWITCH
 - CHROME PENDENT HEAD WITH RECESSED CHROME ESCUTCHEON
 - CONCEALED PENDENT HEAD WITH CHROME COVER PLATE
 - BRASS UPRIGHT HEAD ON SPRIG
 - (10'-0") [FEET-INCHES] CENTERLINE OF PIPING ELEVATION AFF
 - 1 HOUR RATED FIRE WALL
 - - - 2 HOUR RATED FIRE WALL
 - · - · 2 HOUR RATED SHAFT WALL

- FIRE PROTECTION NOTES:**
1. PROVIDE SEISMIC BRACING AS REQUIRED BY THE INTERNATIONAL BUILDING CODE FOR SEISMIC CATEGORY 'C'. USE FLEXIBLE SPRINKLER DROPS FOR ALL SPRINKLER DROPS.
 2. NOT USED.
 3. ALL ROOMS ON THIS FLOOR ARE LIGHT HAZARD, EXCEPT THE FOLLOWING:
 - ORDINARY HAZARD (GROUP 1): STORAGE 1Q-107, STORAGE 1Q-110, OFFICE SUPPLY 1Q-115, STORAGE 1Q-118, TELE 1Q-140, ELEC 1Q-141, STORAGE 1Q-150, STORAGE 1Q-151, STORAGE 1Q-163, AND JAN 1Q-176.

- FIRE PROTECTION KEYED NOTES:**
- ① SPRINKLER HEAD LOCATED AT LOWER CEILING. ALIGN HEAD WITH NEARBY CEILING MOUNTED DEVICES.
 - ② USE SMALL ROOM RULE PER NFPA 13 FOR THIS ROOM.
 - ③ DO NOT ROUTE PIPING OVER DEDICATED ELECTRICAL SPACE. DEDICATED ELECTRICAL SPACE IS DEFINED AS THE WIDTH AND DEPTH OF THE ELECTRICAL EQUIPMENT EXTENDING FROM THE FLOOR TO A HEIGHT OF 6'-0" ABOVE THE EQUIPMENT.
 - ④ AUXILIARY DRAIN VALVE AND PIPING SIZED PER NFPA 13 TO JANITOR FLOOR SINK. COORDINATE WITH PLUMBING CONTRACTOR.
 - ⑤ SPRINKLER PIPING ROUTED AROUND LIGHT FIXTURE.
 - ⑥ SPRINKLER PIPING ROUTED OVER DUCTWORK.
 - ⑦ SPRINKLER PIPING ROUTED AROUND MECHANICAL UNIT.

1 FIRST FLOOR PLAN - FIRE PROTECTION
1/8" = 1'-0"



NO.	DESCRIPTION	DATE
1	Revision 1	3/7/14

APPROVED: MEDICAL CENTER DIRECTOR	APPROVED: FACILITY PLANNER	APPROVED: SERVICE CHIEF	APPROVED: SERVICE CHIEF	APPROVED:
APPROVED: ASSOCIATE DIRECTOR	APPROVED: CHIEF ENGINEER	APPROVED: SERVICE CHIEF	APPROVED: SERVICE CHIEF	APPROVED:
APPROVED: CHIEF OF STAFF	APPROVED: WOMEN VET. PROG. COORD.	APPROVED: SERVICE CHIEF	APPROVED: SERVICE CHIEF	APPROVED:

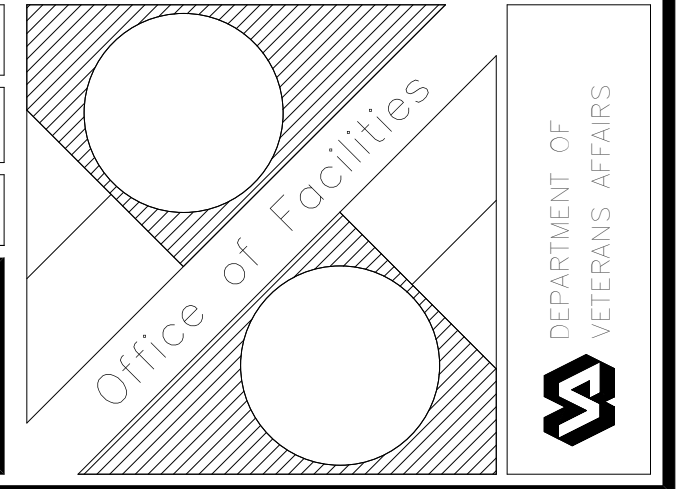
DRAWING TITLE
FIRST FLOOR PLAN - FIRE PROTECTION

PROJECT TITLE
**EUGENE J. TOWBIN HEALTHCARE CENTER
NEW SUBSTANCE ABUSE BUILDING**

BUILDING NUMBER: 172
CHECKED: GAG
DRAWN: JAB

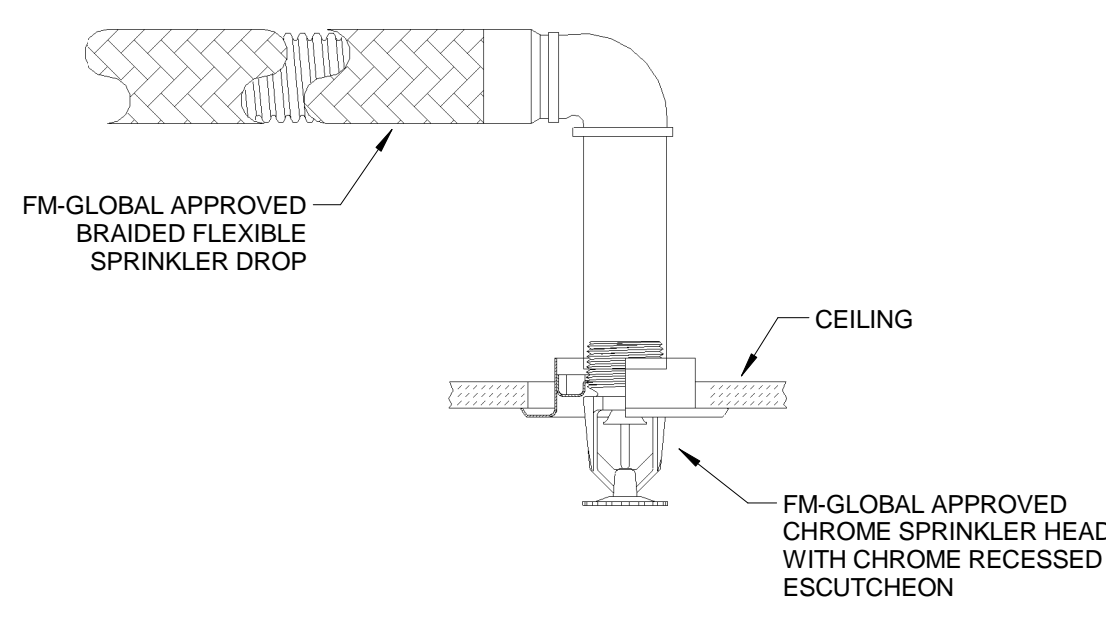
LOCATION: C.A.V.H.S., LR DIVISION

DATE: 01 FEBRUARY 2014
VA PROJECT NUMBER: VA 256 - P - 1272
FPC PROJECT NUMBER: 84410
DRAWING NO.: **FP1.02**
SHEET: 85 OF 167

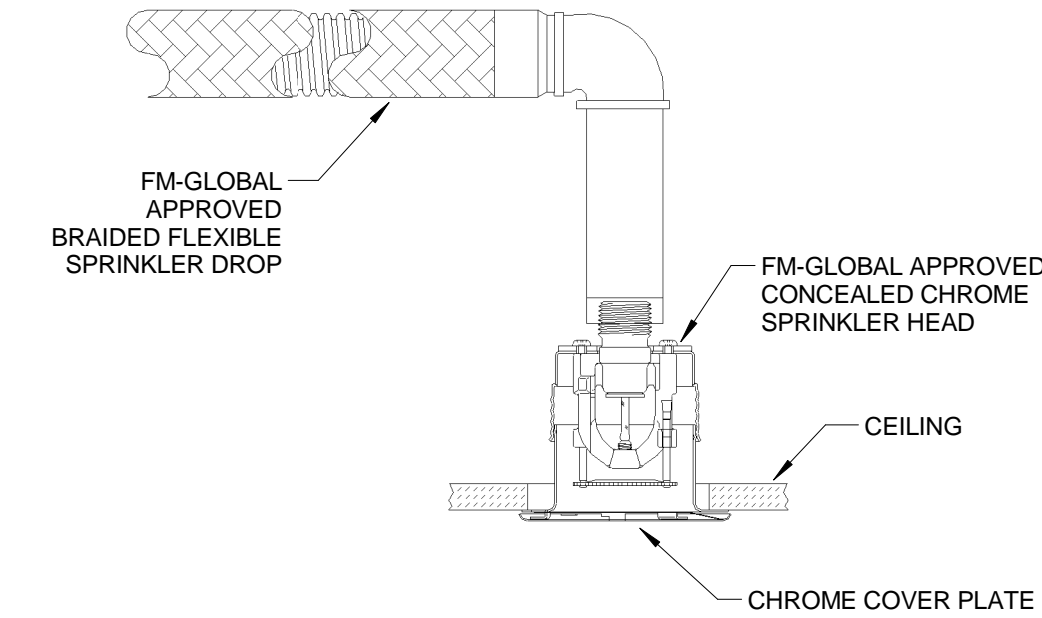


FIRE PROTECTION NOTES:

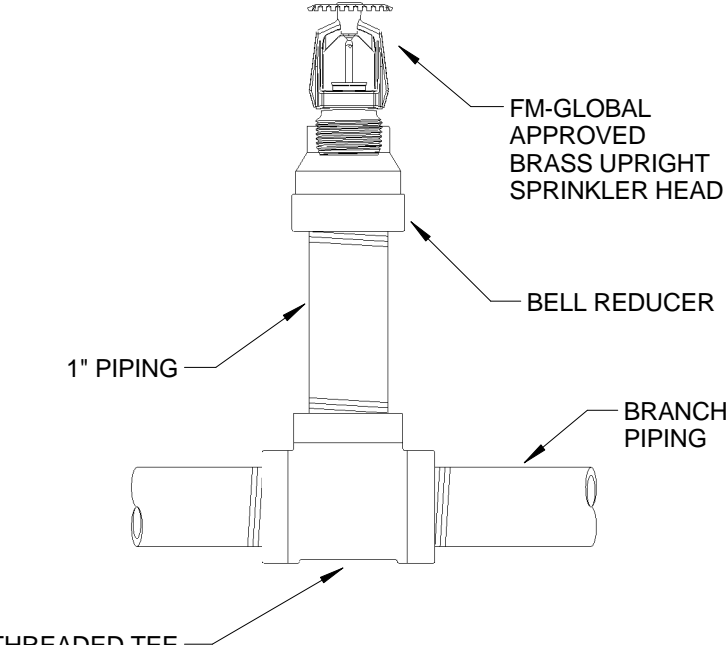
- REFER TO NOTES ON DRAWINGS AND SPECIFICATIONS FOR ADDITIONAL REQUIREMENTS.
- FIRE PROTECTION CONTRACTOR SHALL BASE BID ON CAREFUL COORDINATION OF THE MECHANICAL, PIPING, ELECTRICAL AND STRUCTURAL SYSTEMS IN THE BUILDING.
- PROVIDE A COMPLETE HYDRAULICALLY CALCULATED, FULLY AUTOMATIC WET PIPE SPRINKLER SYSTEM THROUGHOUT THE SUBSTANCE ABUSE BUILDING (I.E. SOUTH ADDITION TO EXISTING BUILDING 170). FIRE PROTECTION CONTRACTOR SHALL INSTALL THE FIRE PROTECTION SYSTEM IN ACCORDANCE WITH ALL APPLICABLE NFPA STANDARDS, JOB SPECIFICATIONS, AND LOCAL CODE REQUIREMENTS.
- FIRE PROTECTION SYSTEMS, PIPING, VALVES AND APPURTENANCES INDICATED ON THE DRAWING ARE DIAGRAMMATIC ONLY. FIRE PROTECTION CONTRACTOR SHALL VERIFY EQUIPMENT SELECTIONS, PIPE ROUTING, ETC. FOR CODE COMPLIANCE, AND ARCHITECTURAL AND STRUCTURAL CONFORMITY. FIRE PROTECTION CONTRACTOR SHOULD THOROUGHLY SURVEY THE PROPERTY AND REVIEW ARCHITECTURAL, STRUCTURAL, MECHANICAL, AND ELECTRICAL CONSTRUCTION DOCUMENTS PRIOR TO BID. THERE IS LIMITED SPACE IN CERTAIN AREAS, AVAILABLE FOR PIPE ROUTING.
- FIRE PROTECTION SHOP DRAWINGS SHALL HAVE COMPLETE REFLECTED CEILING PLANS INDICATING LOCATION OF EACH SPRINKLER HEAD, AS WELL AS PIPING LAYOUTS. PROVIDE ADDITIONAL SPRINKLER HEADS (OVER CODE MINIMUM) IF REQUESTED BY THE ARCHITECT, TO OBTAIN SYMMETRICAL CEILING LAYOUTS.
- FIRE PROTECTION SYSTEM SHALL BE COMPLETE. REUSE EXISTING EQUIPMENT AS NEEDED, SUCH AS THE FIRE PUMP, BACKFLOW PREVENTER, HORIZONTAL STANDPIPES AND FIRE DEPARTMENT CONNECTIONS. INSTALL FIRE DEPARTMENT HOSE VALVES, CONTROL VALVES, SPRINKLER PIPING AND HEADS, ELECTRONIC SUPERVISION, APPURTENANCES, ETC., AS REQUIRED BY NFPA AND LOCAL AUTHORITIES. PIPE SIZING SHALL BE ESTABLISHED BY THE FIRE PROTECTION CONTRACTOR.
- FIRE PROTECTION CONTRACTOR SHALL PERFORM ALL CONNECTIONS TO THE EXISTING SPRINKLER SYSTEM DURING A SINGLE SHUT-DOWN OF THE SPRINKLER SYSTEM. THE SPRINKLER SYSTEM SHUT DOWN PROCEDURE, AS DIRECTED BY THE OWNER, SHALL BE FOLLOWED. IN NO CASE SHALL THE SPRINKLER SYSTEM BE TURNED OFF DURING THE OVERNIGHT HOURS. EXCEPTION: IF THE OWNER SPECIFICALLY ALLOWS THE SHUT DOWN TO A PREDETERMINED AND ACCEPTED TIME FRAME. HOWEVER, IT SHALL IN NO WAY EXTEND INTO WEEKENDS OR HOLIDAYS.
- ALL NEW SPRINKLER MAIN PIPING SHALL BE SCHEDULE 10 WITH ROLL GROOVED AND WELDED OUTLETS. FITTINGS AND COUPLINGS SHALL BE STANDARD ROLL GROOVED.
- ALL NEW SPRINKLER BRANCH LINE PIPING SHALL BE BLACK SCHEDULE 40. FITTINGS SHALL BE STANDARD "BLACK" GRADE CAST IRON, DUCTILE IRON OR MALLEABLE IRON.
- ALTERNATIVE STEEL PIPE SCHEDULES ALLOWED BY NFPA 13 ARE NOT ACCEPTABLE ON THIS PROJECT.
- HYDRAULIC CALCULATIONS SHALL BE BASED UPON A CURRENT FIRE PUMP PERFORMANCE TEST. CONTACT OWNER FOR MOST RECENT TEST RESULTS. IF TEST RESULTS ARE OVER ONE (1) YEAR OLD, A NEW FIRE PUMP PERFORMANCE TEST SHALL BE CONDUCTED AND RESULTS PROPERLY RECORDED AND INCLUDED IN PROJECT SUBMITTAL PACKAGE. PROVIDE MINIMUM OF 10 PSI SAFETY FACTOR FOR ALL HYDRAULIC CALCULATIONS. AVOID SYSTEM PRESSURES EXCEEDING 175 PSI. FIRE PUMP TEST RESULTS ARE SHOWN BELOW FOR INFORMATION PURPOSES ONLY. THE CONTRACTOR SHALL VERIFY THIS INFORMATION IS CORRECT AND CURRENT.
- FIRE PROTECTION SYSTEM SHALL INTERFACE WITH THE BUILDING FIRE ALARM SYSTEM. REFER TO FIRE ALARM SHEETS.
- ALL CONTROL VALVES SHALL HAVE ELECTRONIC SUPERVISION.
- SEE SPECIFICATIONS AND PROJECT MANUAL FOR SYSTEM REQUIREMENTS. REFER TO STRUCTURAL AND ARCHITECTURAL DRAWINGS FOR BUILDING DETAILS.
- SPECIAL CONSIDERATION SHALL BE GIVEN TO AREAS THROUGHOUT THE BUILDING SUCH AS DROPPED SOFFITS, RAISED CEILING AND LIGHTING SOFFITS THAT NECESSITATE ADDITIONAL SPRINKLER HEADS. REFER TO ARCHITECTURAL AND STRUCTURAL DRAWINGS FOR BUILDING DETAILS.
- GENERAL CONTRACTOR SHALL CONDUCT A COORDINATION MEETING WITH THE SUBCONTRACTORS TO ESTABLISH CLEARANCE REQUIREMENTS NEEDED FOR MECHANICAL, PLUMBING AND ELECTRICAL WORK PRIOR TO FABRICATION OF THE SPRINKLER SYSTEM.
- ALL CEILING MOUNTED SPRINKLER HEADS SHALL BE CHROME WITH CHROME RECESSED ESCUTCHEONS, UNLESS NOTED OTHERWISE OF FIRE PROTECTION PLANS. ALL NEW SPRINKLER HEADS FOR LIGHT HAZARD AND ALL STANDARD SPRAY SPRINKLER HEADS FOR ORDINARY HAZARD SHALL BE QUICK RESPONSE, AND UL/FM APPROVED FOR THE DESIGNED LOCATION AND USE.
- ALL CEILING MOUNTED SPRINKLER HEADS SHALL BE LOCATED IN THE CENTER OF CEILING TILES IN ALL AREAS. EXCEPTION: CLOSETS, STORAGE ROOMS, EQUIPMENT ROOMS AND OTHER SIMILAR NON-PUBLIC AREAS ARE NOT REQUIRED TO BE CENTER OF TILE BUT SHALL BE NO CLOSER THAN 6" TO CEILING GRID.
- PROVIDE HEAD GUARDS FOR ALL SPRINKLER HEADS IN JANITOR CLOSETS, ELEVATOR MACHINE ROOMS, OR FOR ANY SPRINKLER HEAD 9 WITHIN 7' OF THE FLOOR.
- PROVIDE AUXILIARY DRAINS FOR ALL TRAPPED PIPING SECTIONS IN ACCORDANCE WITH NFPA 13.
- INSTALL PIPING HORIZONTALLY AND AT RIGHT ANGLES TO WALLS AND CEILINGS.
- PAINT SPRINKLER PIPING IN MECHANICAL ROOMS OSHA RED.
- PROVIDE PROTECTION FOR SPRINKLER HEADS IN AREAS WHERE THE CEILING AND SURROUNDING AREAS ARE TO BE PAINTED. FIRE PROTECTION CONTRACTOR SHALL BE RESPONSIBLE FOR THE REMOVAL OF SPRINKLER PROTECTION AFTER THE PAINTING WORK IS COMPLETE. ANY SPRINKLER WITH PAINT OR TEXTURE OVERSPRAY SHALL BE REPLACED BY THE FIRE PROTECTION CONTRACTOR AT NO ADDITIONAL EXPENSE TO THE OWNER.
- PROVIDE SEISMIC BRACING AS REQUIRED BY THE INTERNATIONAL BUILDING CODE FOR SEISMIC CATEGORY "C."
- ALL WORK SHALL BE IN ACCORDANCE WITH THE HOSPITAL'S INFECTIOUS CONTROL RISK GUIDELINES AND/OR INTERIM LIFE SAFETY MEASURES.
- FIRE PROTECTION PLANS SHALL BE SUBMITTED TO ALL REQUIRED LOCAL AND STATE AUTHORITIES.



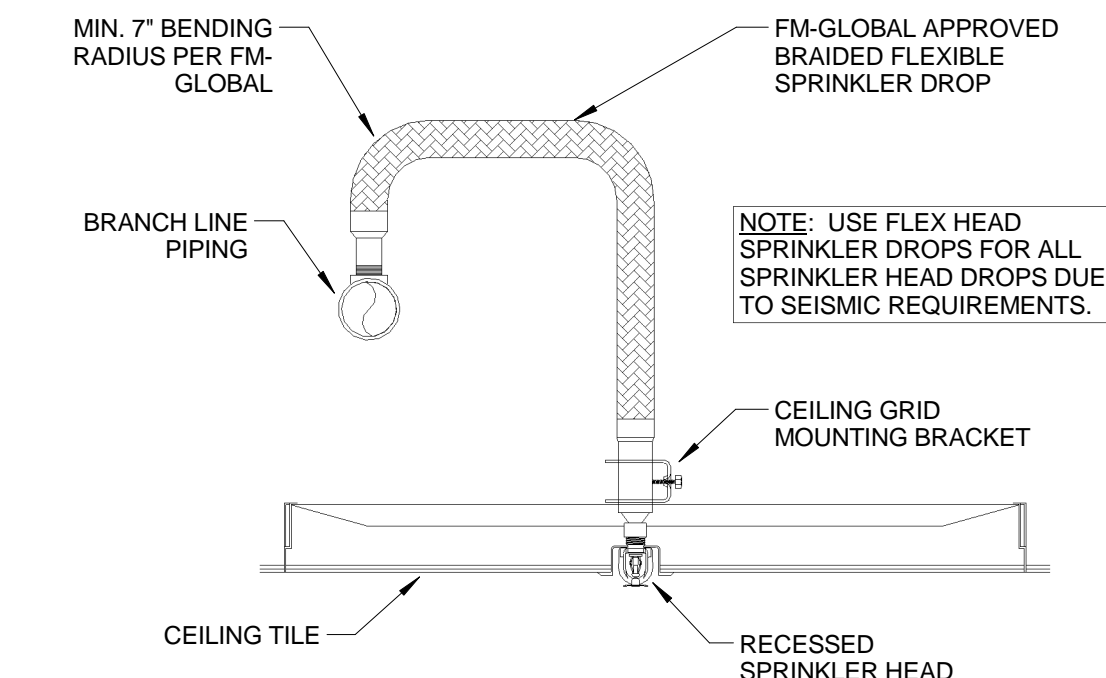
1 RECESSED SPRINKLER HEAD DETAIL
NOT TO SCALE



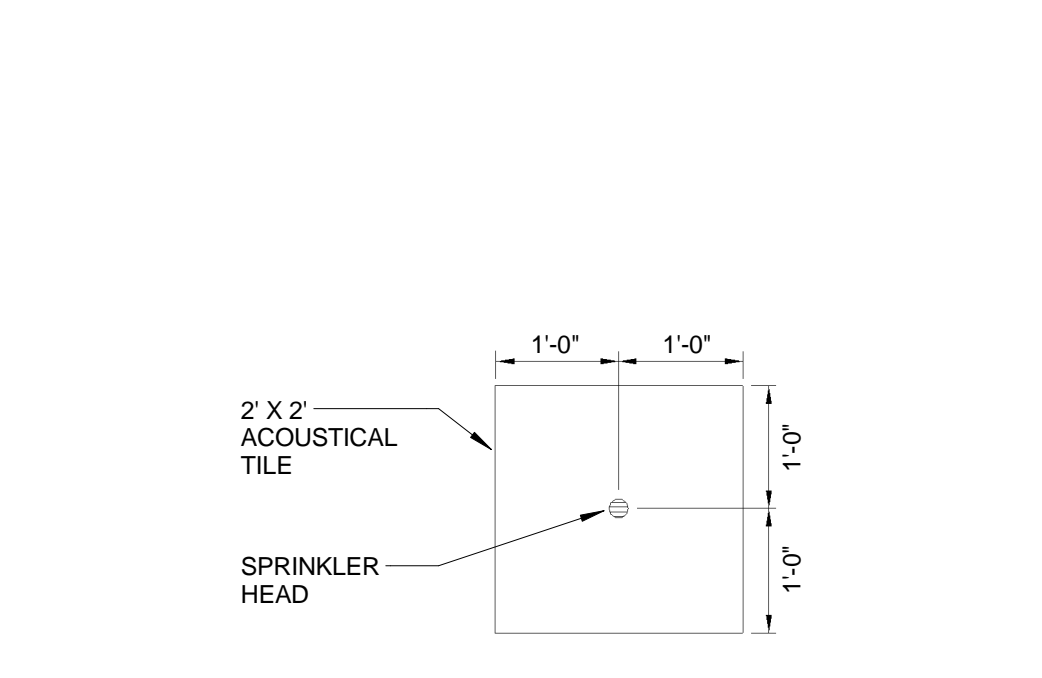
2 CONCEALED SPRINKLER HEAD DETAIL
NOT TO SCALE



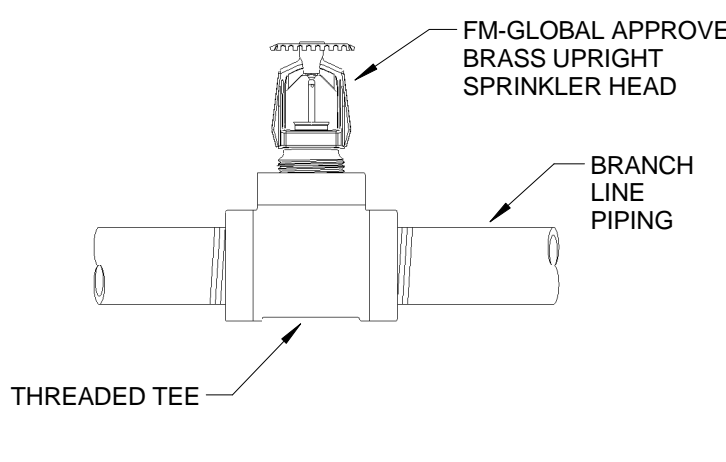
3 UPRIGHT SPRINKLER HEAD ON 1" SPRIG DETAIL
NOT TO SCALE



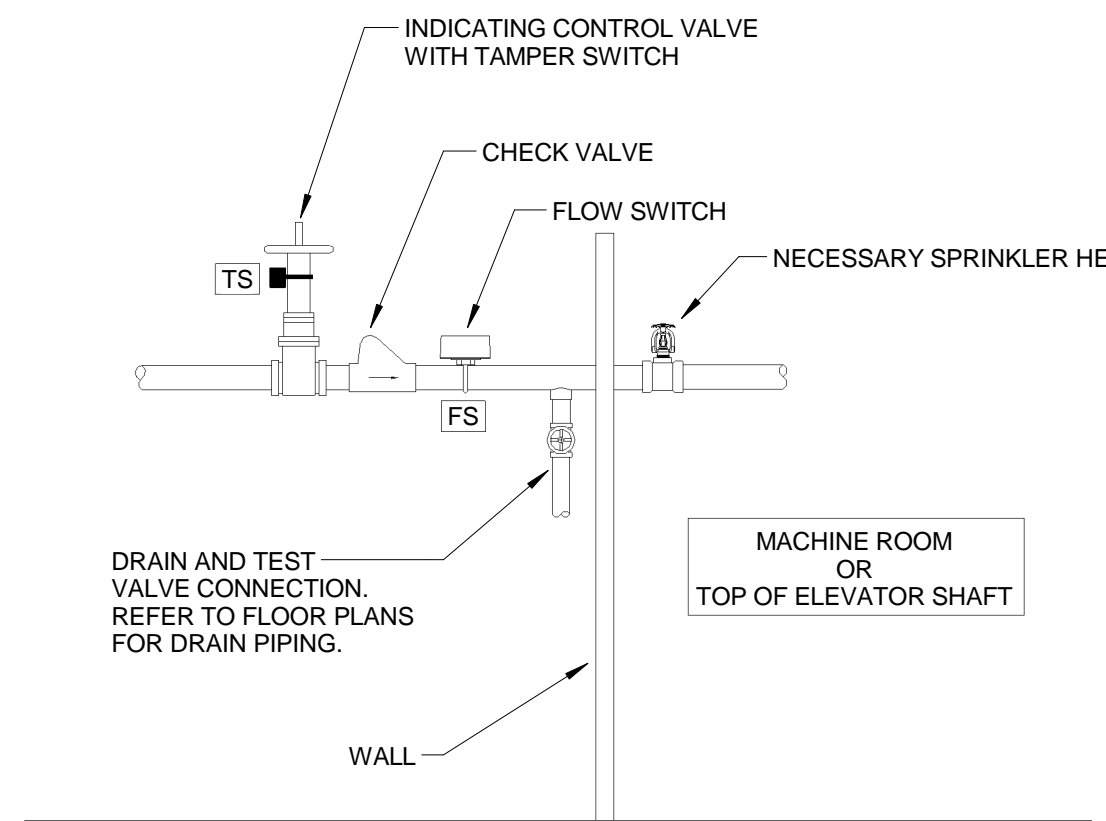
4 FLEX HEAD SPRINKLER DROP DETAIL
NOT TO SCALE



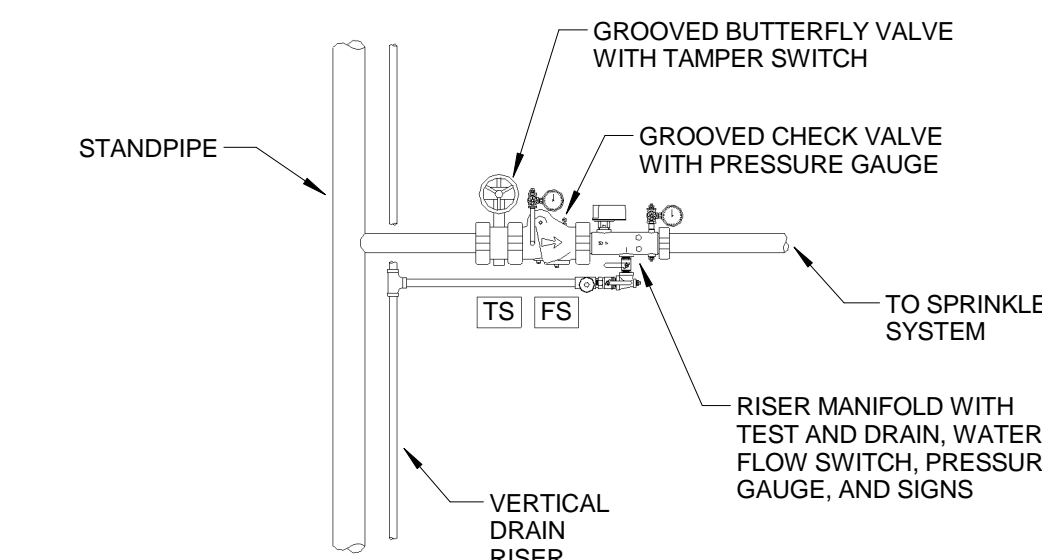
5 CENTER LINE OF 2' TILE DETAIL
NOT TO SCALE



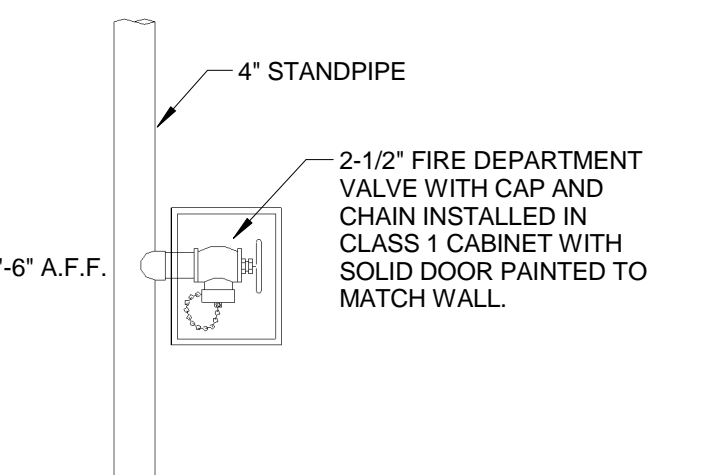
6 UPRIGHT SPRINKLER HEAD DETAIL
NOT TO SCALE



7 ELEVATOR MACHINE ROOM SYSTEM CONNECTION DETAIL
NOT TO SCALE



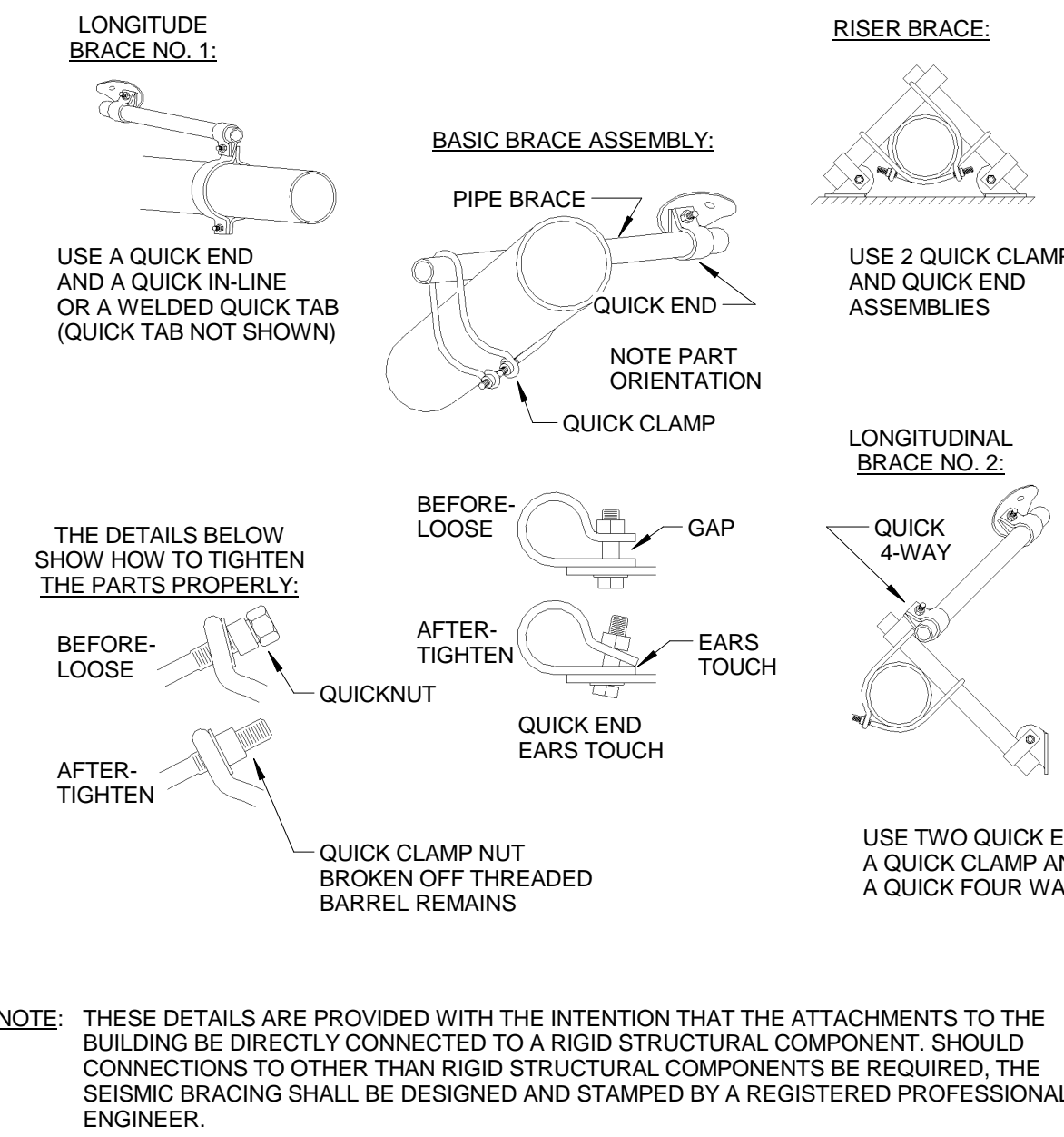
8 SPRINKLER CONTROL VALVE ASSEMBLY DETAIL
NOT TO SCALE



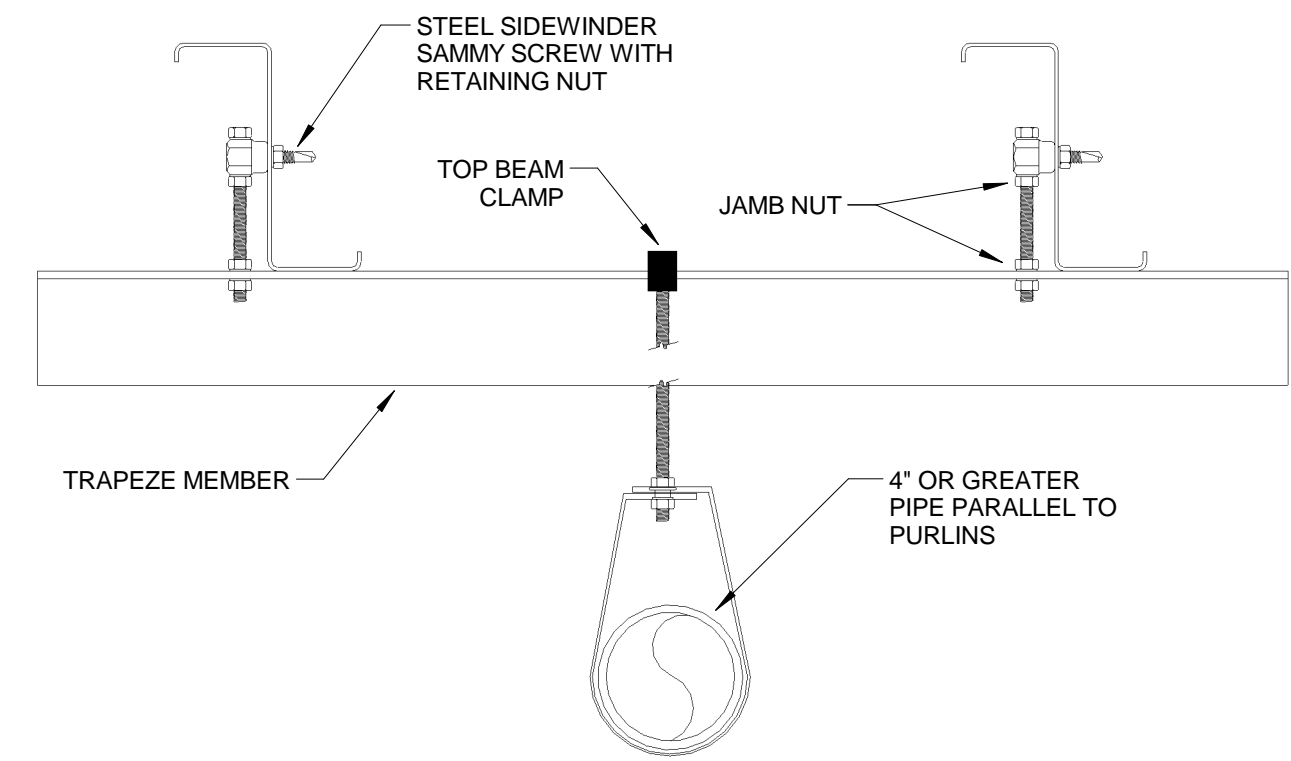
9 FIRE DEPARTMENT VALVE CABINET DETAIL
NOT TO SCALE

THE EXISTING FIRE PUMP IS LOCATED ON THE SOUTH END OF THE GROUND FLOOR OF EXISTING BUILDING 170 IN THE BOILER ROOM (GJ130-170). THE EXISTING FIRE PUMP HAS THE FOLLOWING CHARACTERISTICS:

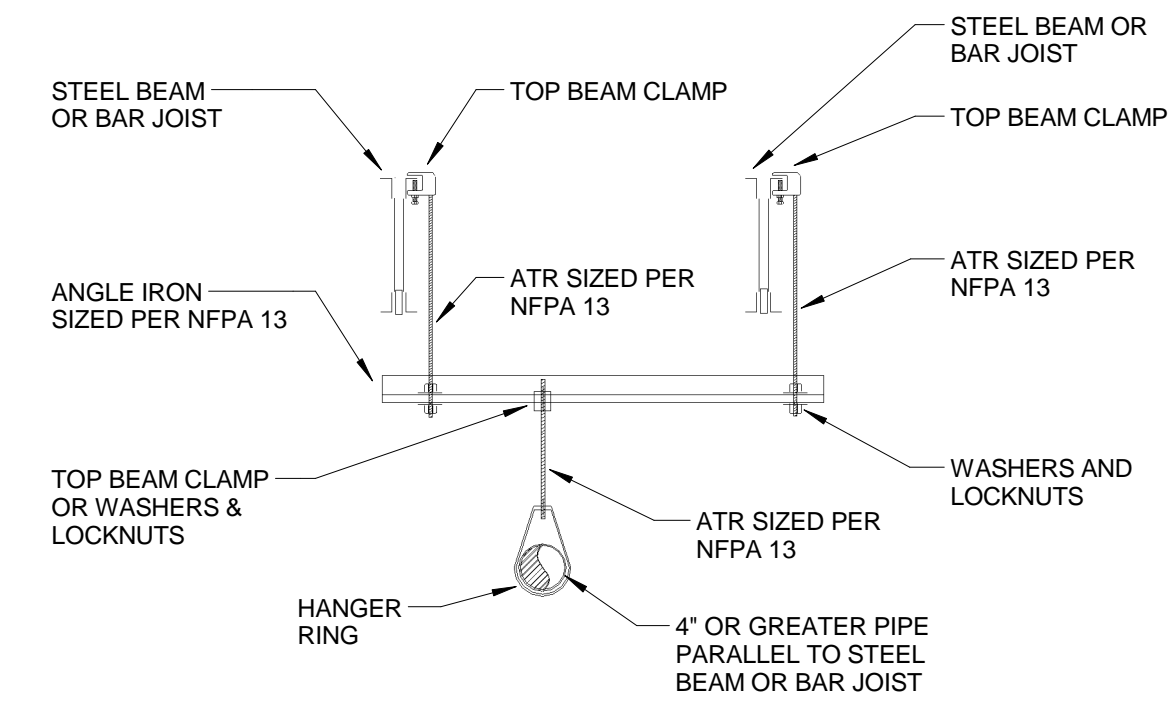
1. TYPE:	DIESEL
2. MIN. CAPACITY AT 65%:	2250 GPM @ 65 PSI
3. MIN. CAPACITY AT 100%:	1500 GPM @ 100 PSI
4. TEST VALUES:	
	GPM PSI
	0 117
	760 113
	1295 103
	1701 94
	1996 77
	2153 70
	2337 60



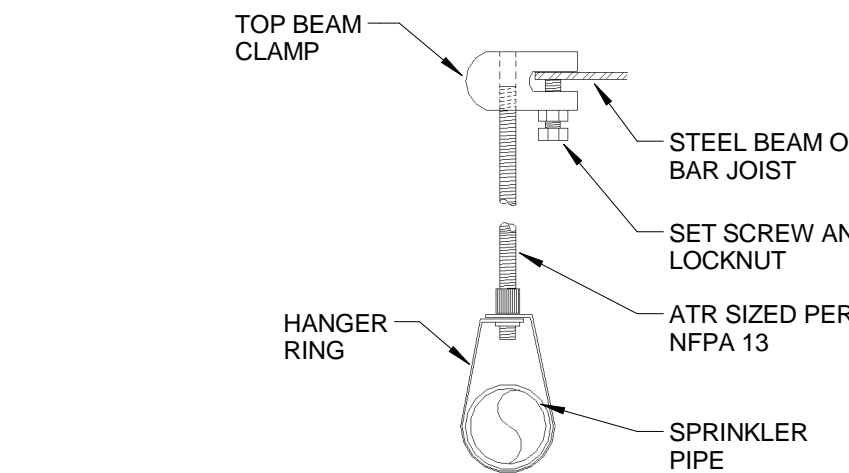
14 TYPICAL SEISMIC BRACING DETAILS
NOT TO SCALE



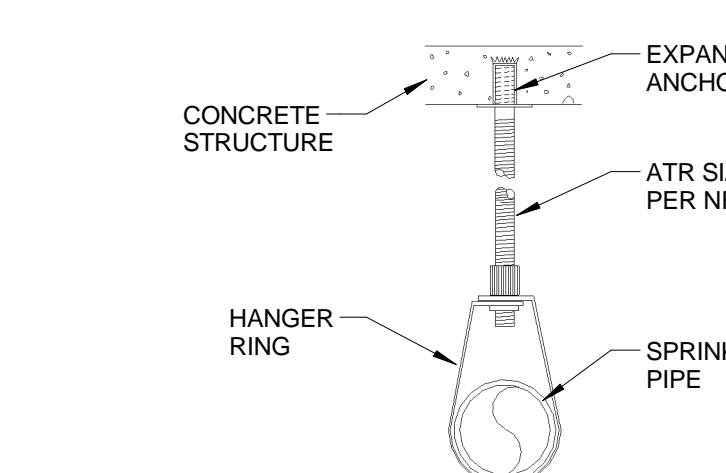
10 TRAPEZE HANGER WITH PULIN DETAIL
NOT TO SCALE



11 TRAPEZE HANGER DETAIL
NOT TO SCALE



12 TOP BEAM CLAMP HANGER DETAIL
NOT TO SCALE



13 CONCRETE HANGER DETAIL
NOT TO SCALE



NO.	DESCRIPTION	DATE

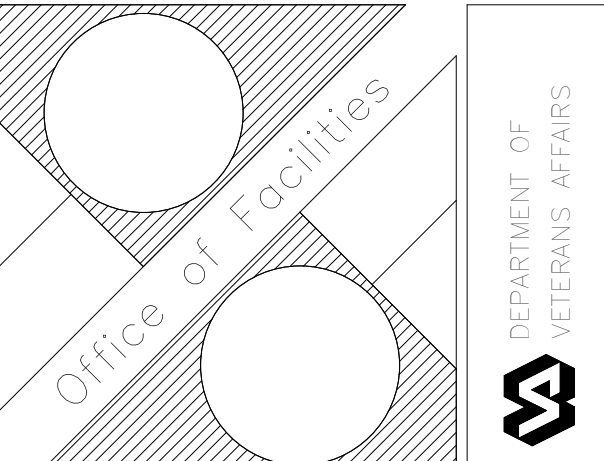
APPROVED: MEDICAL CENTER DIRECTOR	APPROVED: FACILITY PLANNER	APPROVED: SERVICE CHIEF	APPROVED: SERVICE CHIEF	APPROVED:
APPROVED: ASSOCIATE DIRECTOR	APPROVED: CHIEF ENGINEER	APPROVED: SERVICE CHIEF	APPROVED: SERVICE CHIEF	APPROVED:
APPROVED: CHIEF OF STAFF	APPROVED: WOMEN VET. PROG. COORD.	APPROVED: SERVICE CHIEF	APPROVED: SERVICE CHIEF	APPROVED:

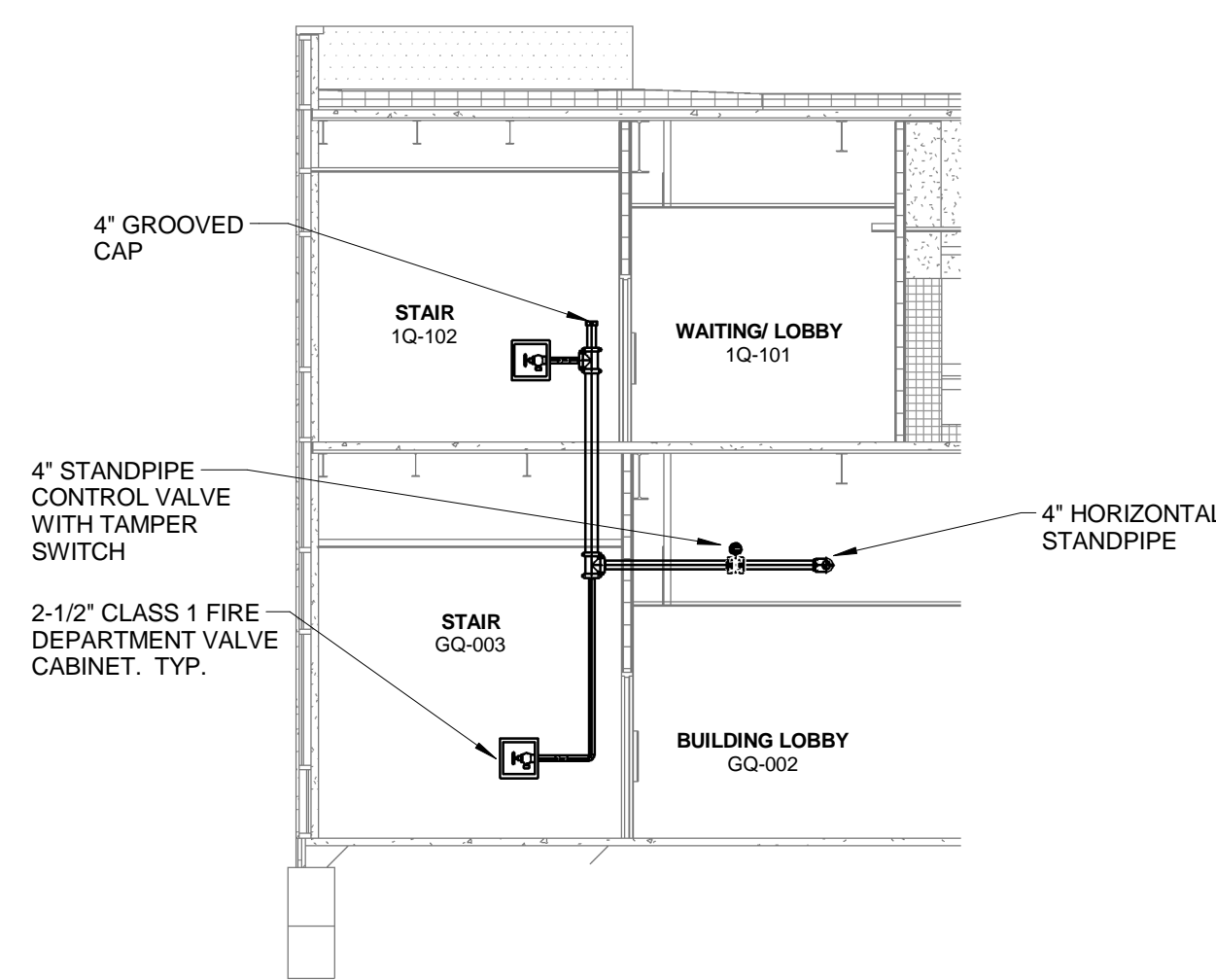
DRAWING TITLE
GENERAL NOTES AND DETAILS - FIRE PROTECTION

PROJECT TITLE
**EUGENE J. TOWBIN HEALTHCARE CENTER
NEW SUBSTANCE ABUSE
BUILDING**

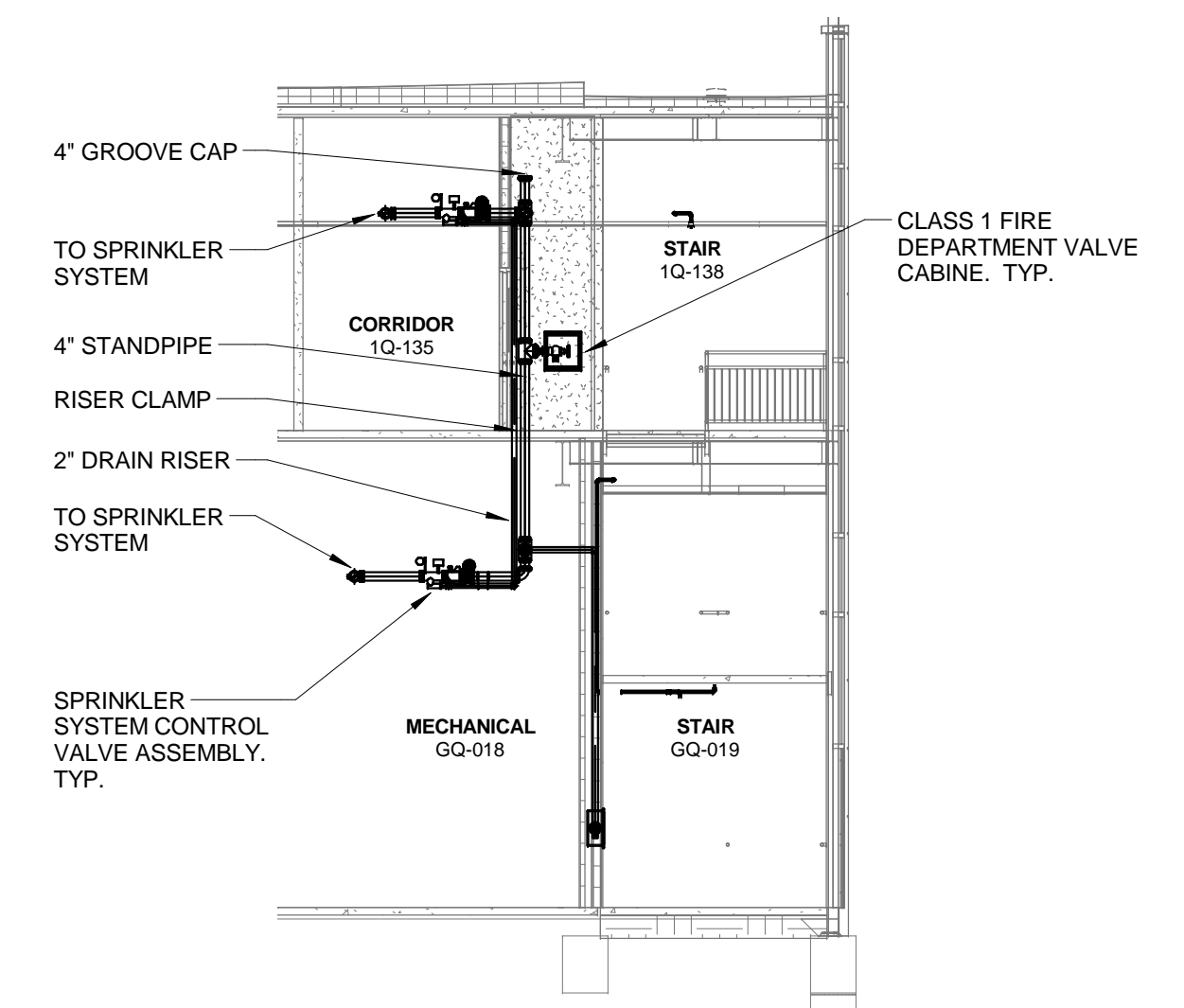
BUILDING NUMBER: **172**
CHECKED: **GAG**
DRAWN: **JAB**
LOCATION: **C.A.V.H.S., 1R DIVISION**

DATE: **01 FEBRUARY 2014**
VA PROJECT NUMBER: **VA 256 - P - 1272**
FPC PROJECT NUMBER: **84410**
DRAWING NO.: **FP2.01**
Sheet **86** of **167**

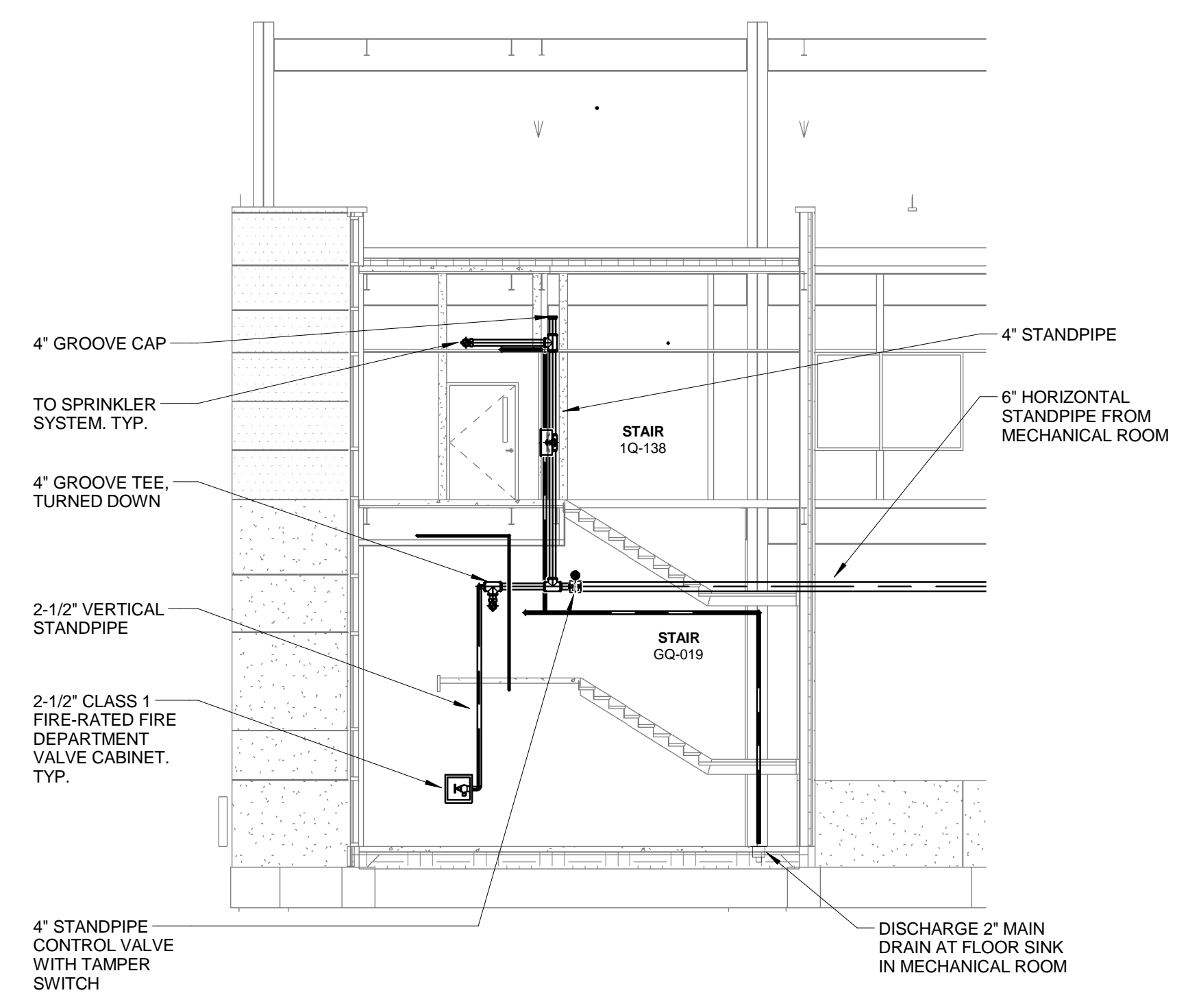




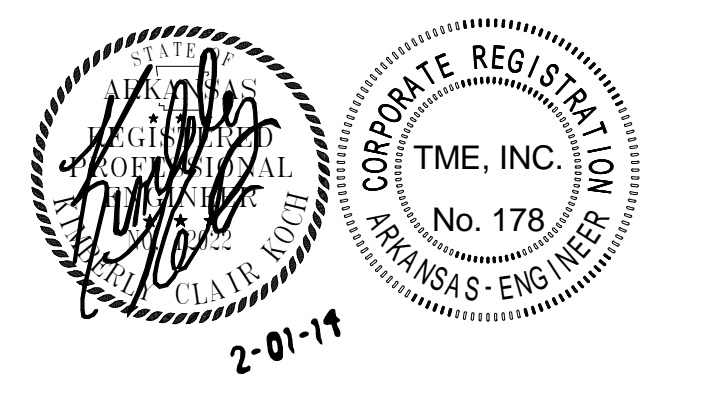
1 "EAST STAIR" WEST ELEVATION
1/8" = 1'-0"



2 "SOUTH STAIR" SOUTH ELEVATION
1/8" = 1'-0"



3 "SOUTH STAIR" WEST ELEVATION
1/8" = 1'-0"



NO.	DESCRIPTION	DATE
1	Revision 1	3/7/14

APPROVED: MEDICAL CENTER DIRECTOR	APPROVED: FACILITY PLANNER	APPROVED: SERVICE CHIEF	APPROVED: SERVICE CHIEF	APPROVED:
APPROVED: ASSOCIATE DIRECTOR	APPROVED: CHIEF ENGINEER	APPROVED: SERVICE CHIEF	APPROVED: SERVICE CHIEF	APPROVED:
APPROVED: CHIEF OF STAFF	APPROVED: WOMEN VET. PROG. COORD.	APPROVED: SERVICE CHIEF	APPROVED: SERVICE CHIEF	APPROVED:

DRAWING TITLE STANDPIPE DETAILS - FIRE PROTECTION		PROJECT TITLE EUGENE J. TOWBIN HEALTHCARE CENTER NEW SUBSTANCE ABUSE BUILDING		DATE 01 FEBRUARY 2014
BUILDING NUMBER 172		CHECKED GAG	DRAWN JAB	VA PROJECT NUMBER VA 256 - P - 1272
LOCATION C.A.V.H.S., LR DIVISION		DRAWING NO. FP2.02		IFCC PROJECT NUMBER 84410
		Sheet 87 of 167		Office of Facilities





GENERAL FIRE PROTECTION RENOVATION NOTES

1. FIRE PROTECTION CONTRACTOR SHALL MODIFY THE EXISTING SPRINKLER SYSTEM AS REQUIRED FOR THE RENOVATED AREAS.
2. FIRE PROTECTION CONTRACTOR SHALL REFER TO NFPA FOR DESIGN CRITERIA REQUIREMENTS.
3. FIRE PROTECTION CONTRACTOR SHALL BE RESPONSIBLE FOR SURVEYING THE AREA OF WORK TO DETERMINE THE SCOPE OF DEMOLITION WORK REQUIRED.
4. ALL ROOMS SHALL BE CONSIDERED LIGHT HAZARD AND SPRINKLER COVERAGE SHALL NOT EXCEED 225 SQ. FT. PER HEAD.
5. ALL EXISTING SPRINKLER HEADS SHALL BE REMOVED, UNLESS NOTED OTHERWISE. REWORK EXISTING PIPING FOR NEW SPRINKLER HEAD.
6. REFER TO ARCHITECTURAL PLANS FOR GENERAL RENOVATION ITEMS SUCH AS CEILINGS, WALLS, AREAS OF WORK, ETC.
7. REFER TO SHEET FP2.01 FOR ADDITIONAL NOTES AND DETAILS.
8. FIRE PROTECTION CONTRACTOR SHALL COORDINATE WITH THE OWNER AS TO CONSTRUCTION SCHEDULING, SERVICE INTERRUPTIONS, AND ACCESS TO WORK AREAS.
9. NO MORE THAN ONE (1) SPRINKLER HEAD SHALL BE SUPPLIED FROM AN EXISTING 1/2" SPRINKLER OUTLET. NO MORE THAN TWO (2) SPRINKLER HEADS SHALL BE SUPPLIED FROM AN EXISTING 1" SPRINKLER OUTLET.
10. REMOVE AND PLUG OUTLETS FOR ALL EXISTING SPRINKLER HEAD LOCATIONS NOT REUSED.
11. THERE IS LIMITED SPACE ABOVE CEILINGS. EXERCISE EXTREME COORDINATION WITH MECHANICAL, PLUMBING, AND ELECTRICAL PRIOR TO CREATING SHOP DRAWINGS. FIRE PROTECTION CONTRACTOR SHALL FIELD VERIFY EXISTING AND NEW MECHANICAL, PLUMBING AND ELECTRICAL EQUIPMENT PRIOR TO SPRINKLER SYSTEM FABRICATION.
12. ALL CONNECTIONS TO EXISTING PIPING SHALL BE INSTALLED DURING A SINGLE SPRINKLER SYSTEM SHUT DOWN, AS DIRECTED BY THE OWNER.
13. REPAIR ALL HOLES IN WALLS AND CEILINGS AND MAINTAIN REQUIRED FIRE RATING OF WALL AND CEILINGS.
14. IF NEW WALL LOCATIONS CREATE A SITUATION OF OVER SPACING FOR THE ADJACENT EXISTING NON-RENOVATED AREAS, REWORK EXISTING SPRINKLER COVERAGE IN NON-RENOVATED AREAS TO BRING THESE AREAS INTO COMPLIANCE WITH NFPA SPACING RULES FOR THE GIVEN OCCUPANCY HAZARDS.
15. ALL RENOVATION WORK SHALL BE IN ACCORDANCE WITH THE HOSPITAL'S INFECTIOUS CONTROL GUIDELINES.
16. THE RE-USE OF EXISTING SPRINKLER SYSTEM COMPONENTS IS ACCEPTABLE, WITH THE EXCEPTION OF SPRINKLER HEADS.
17. THE SPRINKLER SYSTEM SHUT DOWN PROCEDURE, AS DIRECTED BY THE OWNER, SHALL BE FOLLOWED. IN ANY CASE, THE RESPONDING FIRE DEPARTMENT SHALL BE NOTIFIED PRIOR TO SHUT DOWN. IN NO CASE SHALL THE SPRINKLER SYSTEM BE TURNED OFF DURING THE OVERNIGHT HOURS. EXCEPTION: IF THE OWNER SPECIFICALLY ALLOWS THE SHUT DOWN TO A PREDETERMINED AND ACCEPTED TIME FRAME. HOWEVER, IT SHALL IN NO WAY EXTEND INTO WEEKENDS OR HOLIDAYS.
18. REMOVE ALL EXISTING FIRE SPRINKLER PIPING, FITTINGS AND HANGERS THAT ARE NO LONGER USEFUL TO THE FIRE SPRINKLER SYSTEM AT TIME OF COMPLETION. THE OWNER RETAINS THE FIRST RIGHTS OF REFUSAL FOR ALL SUCH EQUIPMENT.
19. AFTER THE RENOVATIONS ARE COMPLETE, THE FIRE PROTECTION CONTRACTOR IS REQUIRED TO PERFORM A WORKING PRESSURE TEST. THE TEST SHALL PROVE THAT THERE ARE NO LEAKS IN EXCESS IN TWO HOURS WHEN THE SYSTEM IS PUMPED TO 50 PSI GREATER THAN SYSTEM WORKING PSI. THE CONTRACTOR SHALL COORDINATE THESE ACTIVITIES WITH THE OWNER. THE CONTRACTOR SHALL MAKE EVERY ATTEMPT TO PERFORM HIS WORK AS EXPEDITIOUSLY AS POSSIBLE IN ORDER TO MINIMIZE THE LENGTH OF TIME THE SYSTEM IS SHUT DOWN.

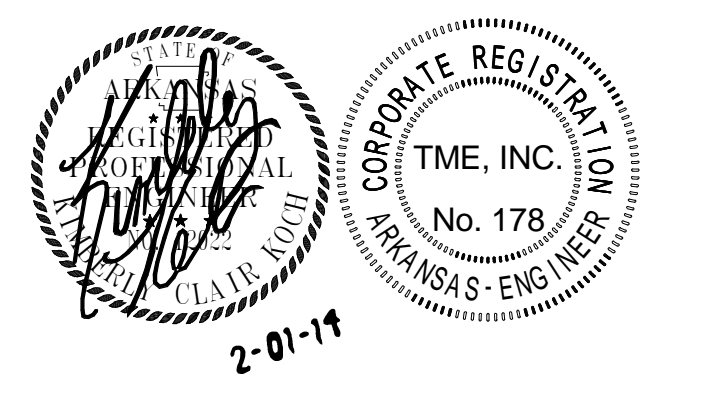
KEYED FIRE PROTECTION RENOVATION NOTES

- ① REPLACE EXISTING STANDARD RESPONSE SPRINKLER HEAD WITH NEW QUICK RESPONSE SPRINKLER HEAD.
- ② EXISTING QUICK RESPONSE SPRINKLER HEAD SHALL REMAIN.
- ③ MATCH EXISTING SPRINKLER HEADS WITHIN THIS ROOM IN EVERY CHARACTERISTIC (STYLE, COLOR, ESCUTCHEON, ETC.)

FIRE PROTECTION LEGEND

- EXISTING CHROME PENDENT SPRINKLER HEAD WITH CHROME ESCUTCHEON TO BE REMOVED
- EXISTING BRASS UPRIGHT SPRINKLER HEAD TO BE REMOVED
- ⊙ NEW QUICK RESPONSE CHROME PENDENT SPRINKLER HEAD WITH CHROME RECESSED ESCUTCHEON
- ▭ INDICATES FIRE PROTECTION SCOPE OF WORK

GROUND FLOOR RENOVATION PLAN - FIRE PROTECTION
1 1/8" = 1'-0"



NO.	DESCRIPTION	DATE
1	Revision 1	3/7/14

APPROVED: MEDICAL CENTER DIRECTOR	APPROVED: FACILITY PLANNER	APPROVED: SERVICE CHIEF	APPROVED: SERVICE CHIEF	APPROVED:
APPROVED: ASSOCIATE DIRECTOR	APPROVED: CHIEF ENGINEER	APPROVED: SERVICE CHIEF	APPROVED: SERVICE CHIEF	APPROVED:
APPROVED: CHIEF OF STAFF	APPROVED: WOMEN VET. PROG. COORD.	APPROVED: SERVICE CHIEF	APPROVED: SERVICE CHIEF	APPROVED:

DRAWING TITLE
GROUND FLOOR RENOVATION PLAN - FIRE PROTECTION

PROJECT TITLE
EUGENE J. TOWBIN HEALTHCARE CENTER NEW SUBSTANCE ABUSE BUILDING

BUILDING NUMBER
172

CHECKED
GAG

DRAWN
JAB

LOCATION
C.A.V.H.S., LR DIVISION

DATE
01 FEBRUARY 2014

VA PROJECT NUMBER
VA 256 - P - 1272

FPC PROJECT NUMBER
84410

DRAWING NO.
FP3.01

Page **88** of **167**

