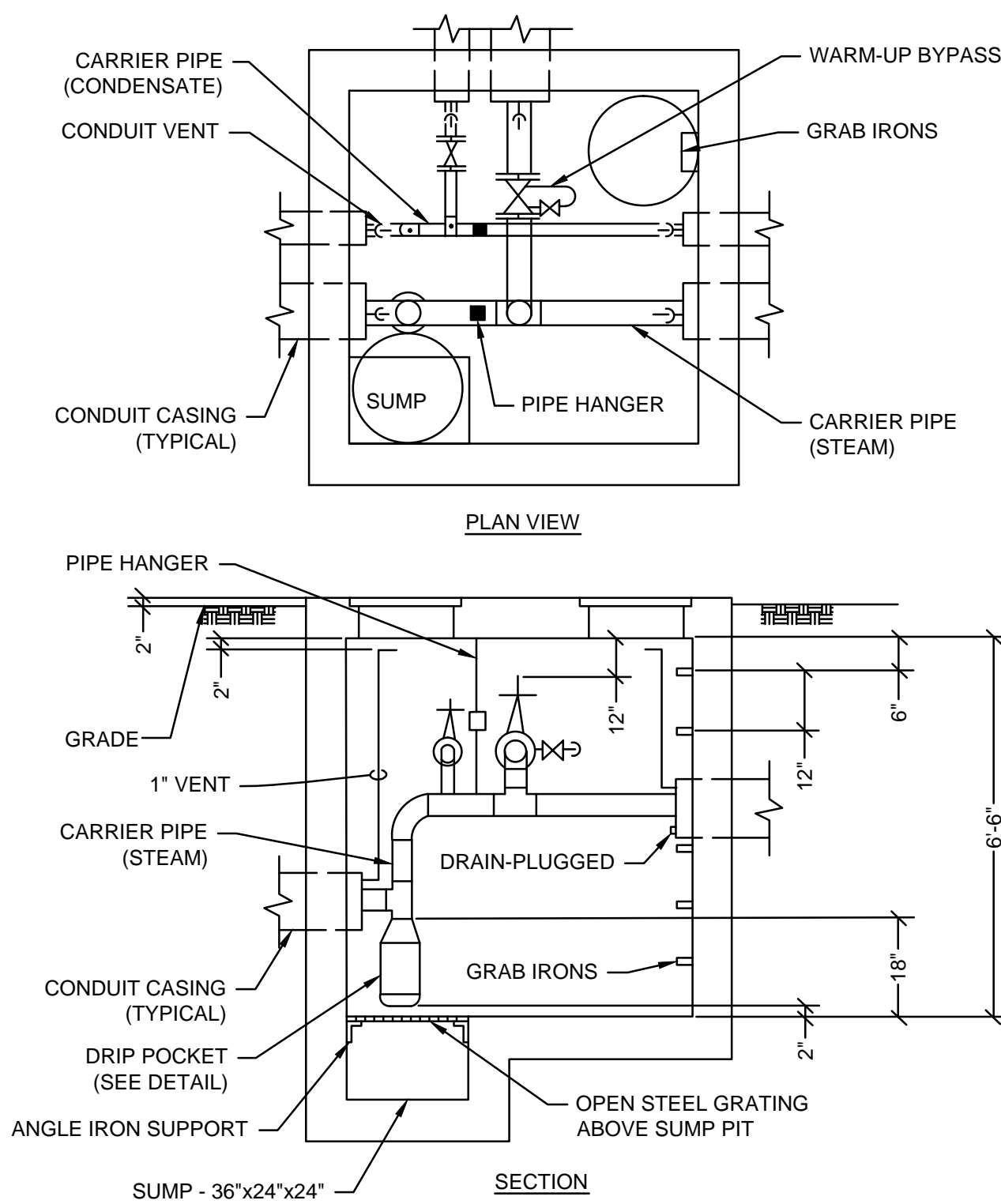
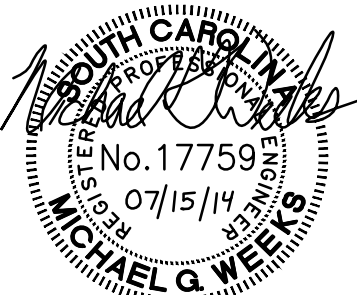
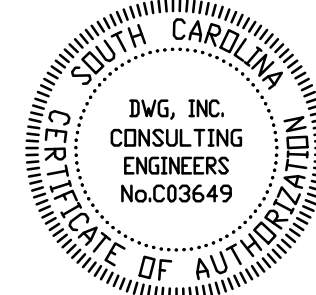


Item	Date	Description
1	07/15/14	ADDENDUM 2



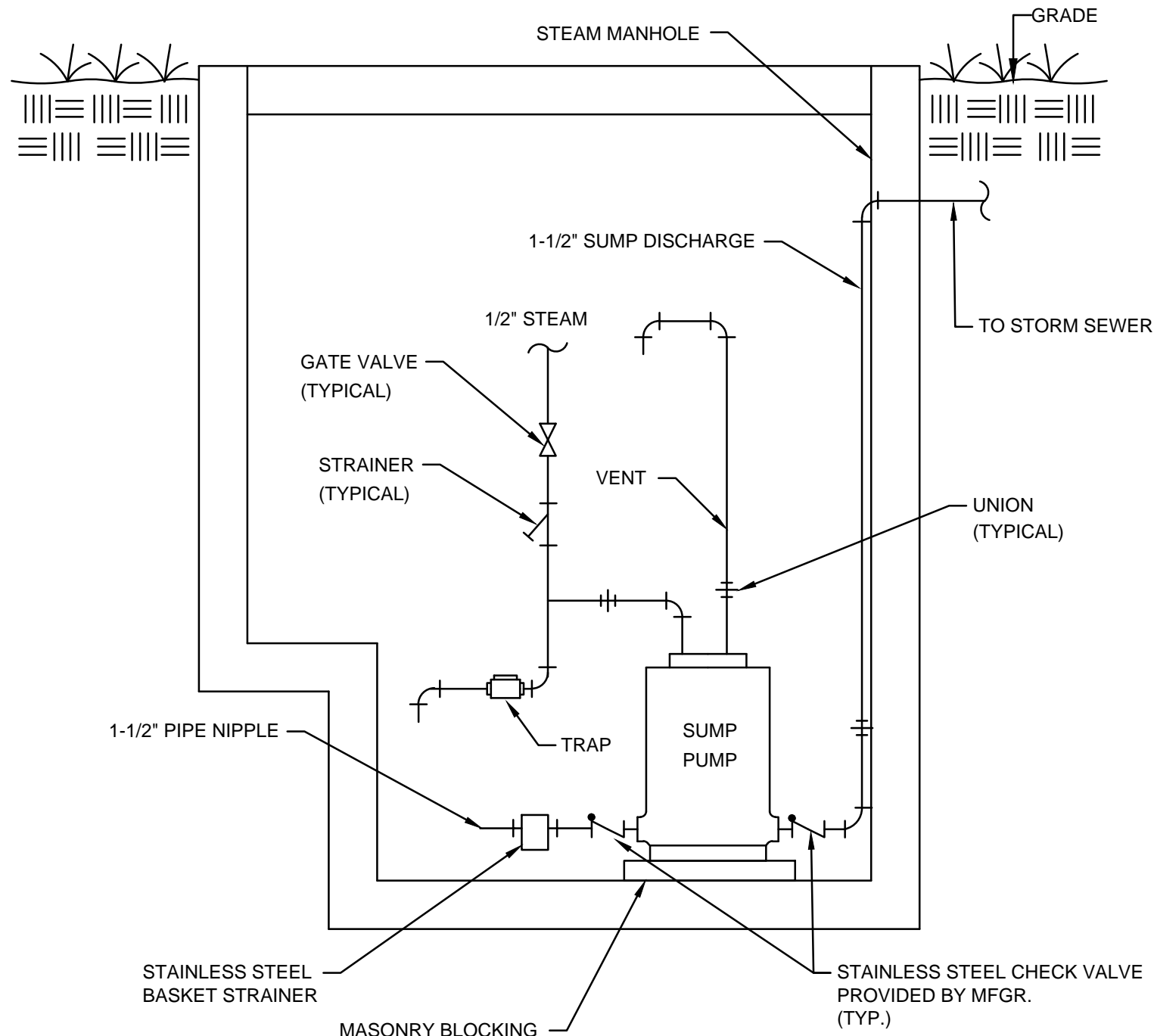
- NOTES:
- DIMENSIONS ARE MINIMUM UNLESS OTHERWISE NOTED.
 - PROVIDE STRUCTURAL DESIGN SUITABLE FOR SITE LOCATION.
 - FOR ADDITIONAL MANHOLE DETAILS INCLUDING STRUCTURE, VENTILATION, AND DRAINAGE CONSULT ARMY TECHNICAL MANUAL, TM-5-810-7.
 - MINIMUM FLOOR SPACE 6'x6'.

1

MS001

CONCRETE STEAM MANHOLE WITH TYPICAL PIPING

SCALE: NTS

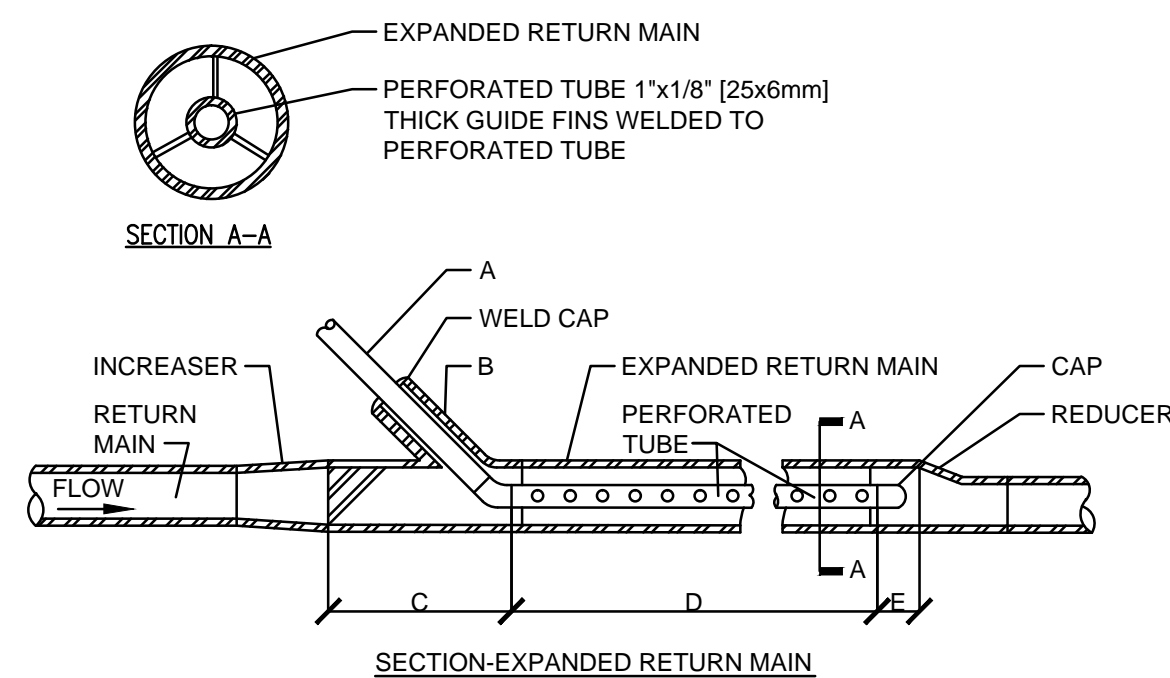


2

MS001

SUMP PUMP DETAIL

SCALE: NTS



A	SIZE, TRAP DISCHARGE LINE	1/2" [15mm]	3/4" [20mm]
B	SIZE, 45° WELDING NIPPLE	1" [25mm]	1-1/4" [32mm]
C	LENGTH OF EXPANDED MAIN AHEAD OF TRAP DISCHARGE PIPE	7' [175mm]	7' [175mm]
D	LENGTH OF PERFORATED PIPE	16-1/2" [415mm]	16-1/2" [415mm]
E	LENGTH OF EXPANDED MAIN OF FOLLOWING PERFORATED PIPE	2' [50mm]	2' [50mm]

RETURN MAIN SIZE	UP TO 1-1/2" [40mm]	2" [50mm]	3" [75mm] & OVER
EXPANDED RETURN MAIN SIZE		2-1/2" [65mm]	SAME SIZE

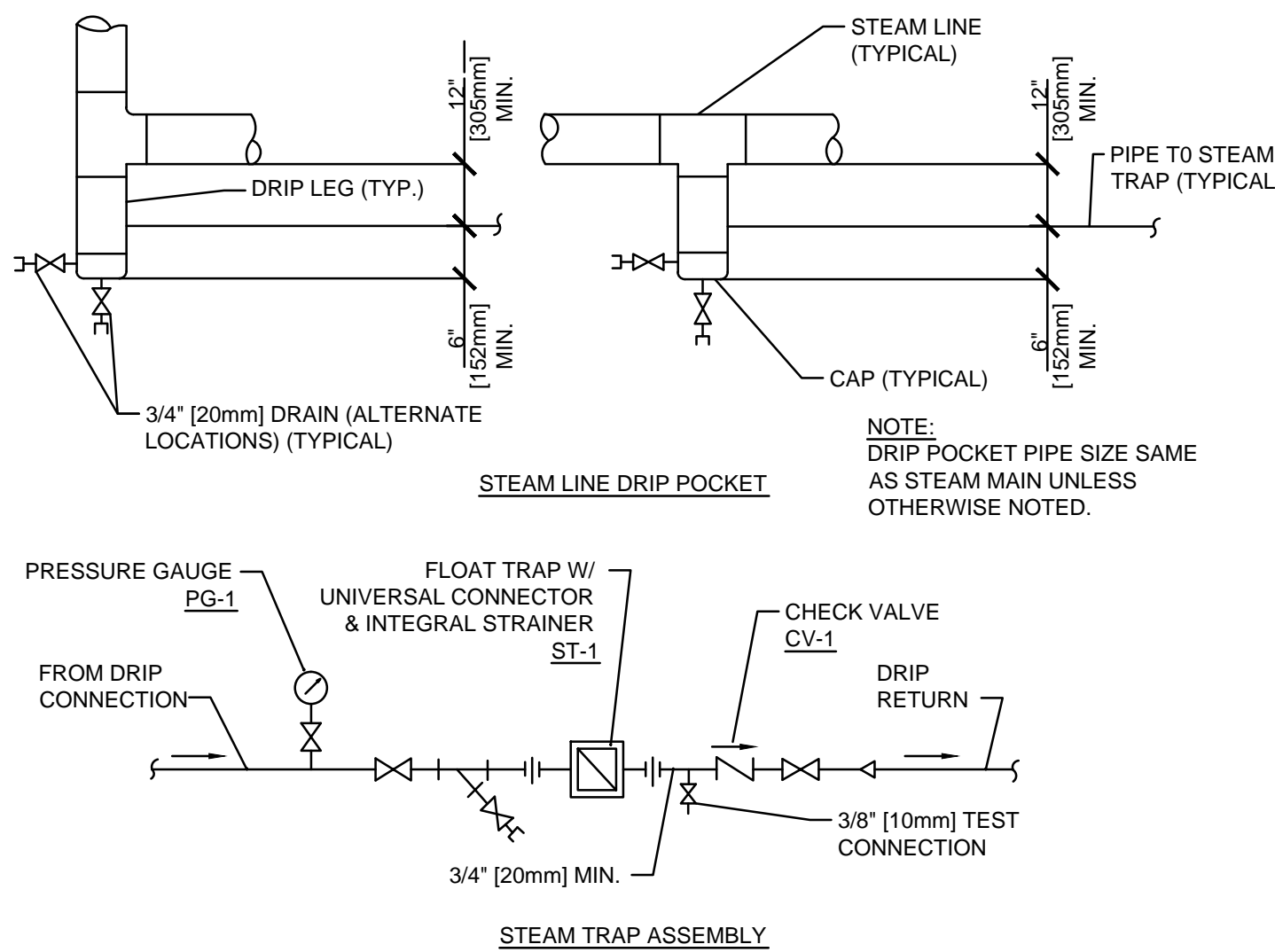
- NOTES:
- 1/2" [15mm] PERFORATED TUBE SHALL HAVE 40 - 1/8" [16mm] DIAMETER HOLES SPACED 1-1/2" [40mm] O.C. IN 4 ROWS.
 - 3/4" [20mm] PERFORATED TUBE SHALL HAVE 78 - 1/8" [8mm] DIAMETER HOLES SPACED 1-1/2" [40mm] O.C. IN 6 ROWS.
 - HOLES IN TUBE SHALL BE SPACED EQUALLY AROUND PERIMETER.

3

MS001

HIGH AND MEDIUM PRESSURE STEAM TRAP DISCHARGE INTO PUMPED CONDENSATE RETURN LINE DETAIL

SCALE: NTS



4

MS001

STEAM LINE DRIP POCKET STEAM TRAP ASSEMBLY

SCALE: NTS

STEAM SPECIALTY SCHEDULE

TAG	DESCRIPTION	TYPE	CONNECTION SIZES (INCHES)	CONNECTION TYPE	DISCHARGE CAPACITY (PPH)	DIFFERENTIAL PRESSURE (PSI)	MAXIMUM OPERATING PRESSURE (PSIG)	MANUFACTURER/ MODEL	NOTES/REMARKS
ST-1	STEAM TRAP	FLOAT	1	NPT	1000	70	150	TLV CO. FS5-10	1
CV-1	CHECK VALVE	SPRING LOAD DISC	1	NPT	-	-	300	TLV CO. CK3M	-
AV-1	AUTO AIR VENT	BALANCE PRESSURE DIAPHRAGM	1/2	NPT	-	-	300	TLV CO. LA21	-
SP-1	SUMP PUMP	STEAM POWERED	STRAINED INLET 1-1/2 OUT	NPT	30 GPM	25 FT	125	SPIRAX-SARCO PPEC	2
PG-1	PRESSURE GAUGE	PHOSPHOR BRONZE TUBE	1/4	NPT	-	-	-	WEKSLER EA14 E	-

NOTES:

- PROVIDE UNIVERSAL CONNECTOR W/ STRAINER.
- PUMP SHALL BE STAINLESS STEEL CASE, STAINLESS STEEL STRAINER WITH STAINLESS STEEL HARDWARE. MAXIMUM SOLIDS SIZE 1/2".

STEAM SYSTEM LEGEND

ABBREVIATION	LINE TYPE	DESCRIPTION
DSTM-TEXT	_____	STEAM TEXT
DSTM-CDR-CONST	-----	STEAM CONDENSATE RETURN PIPING
DSTM-S-CONST	_____	STEAM SUPPLY PIPING
DSTM-CDR	-----	STEAM CONDENSATE RETURN
DSTM-S	_____	STEAM SUPPLY PIPING

STEAM SYSTEM SYMBOLS

ABBREVIATION	SYMBOL	DESCRIPTION
A/C	=====	ABOVE CEILING
AG	=====	ALIGNMENT GUIDE
COTR	=====	CONTRACTING OFFICER'S TECHNICAL REPRESENTATIVE
CV	⌋	CHECK VALVE
FG	=====	FINISH GRADE
HPC	=====	HIGH PRESSURE CONDENSATE
HPS	=====	HIGH PRESSURE STEAM
PC	=====	PUMPED CONDENSATE
PG	⊙	PRESSURE GAUGE
R	----->	REDUCER
ST	⌋	STEAM TRAP
TYP	=====	TYPICAL
U/G	=====	UNDER GROUND
V	⌋	VALVE
	=====	UNION
	=====	CONNECT TO EXISTING

GENERAL NOTES

- PRE-MANUFACTURED PIPE SUPPORT SYSTEMS AND COMPONENTS SHALL BE MANUFACTURED IN ACCORDANCE WITH THE MANUFACTURER'S STANDARDIZATION SOCIETY (MSS) STANDARD PRACTICE, LATEST EDITION.
- ALL EXPOSED STEEL PARTS (GUIDES, ANCHORS, BOLTS, NUTS, WASHERS, ETC.) SHALL BE HOT GALVANIZED AFTER FABRICATION.
- MISCELLANEOUS METAL ITEMS SUCH AS PIPE SUPPORTS, HANGERS, BRACKETS, SLEEVES, ETC. SHALL BE MANUFACTURED FROM GRADE "C" COLD - FORMED CARBON STEEL WITH A YIELD POINT FY=33KSI.