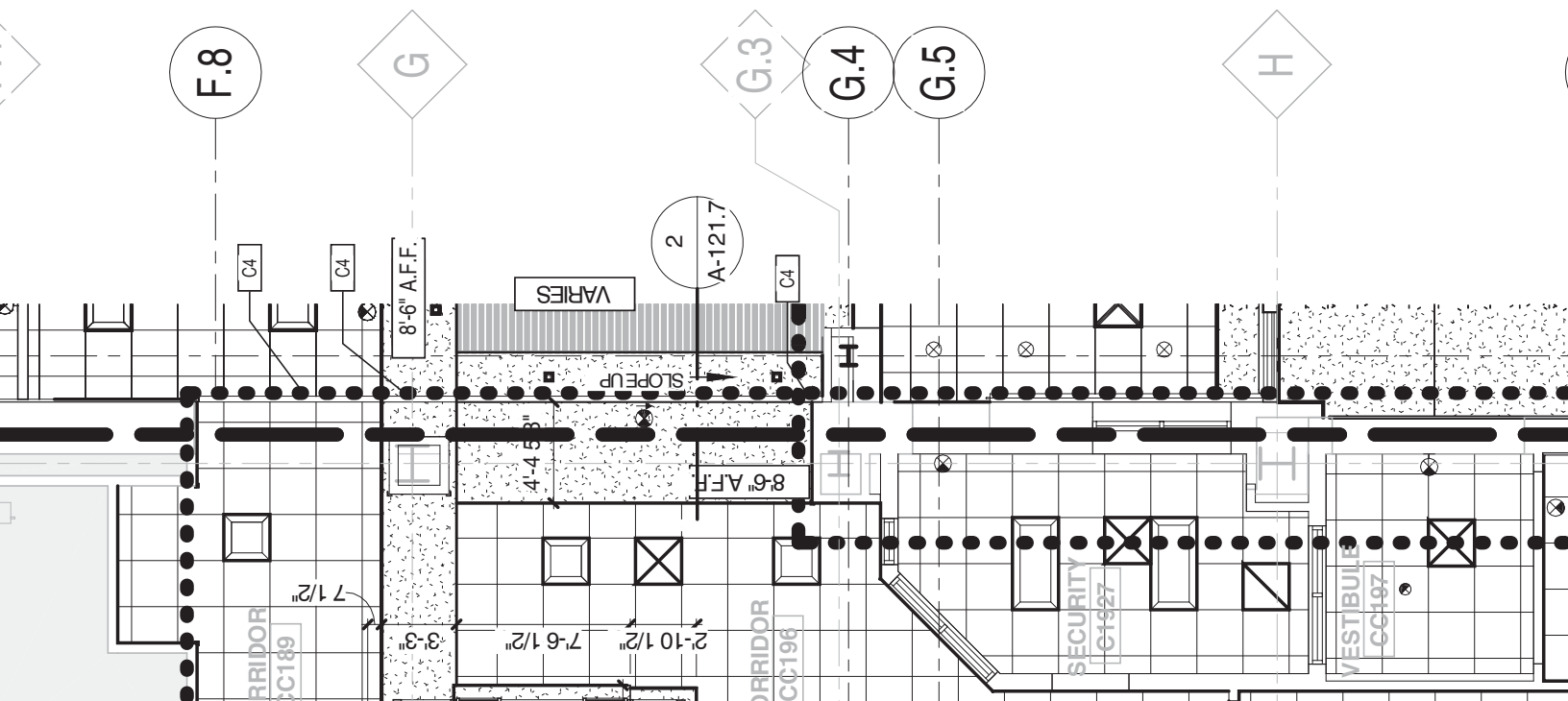
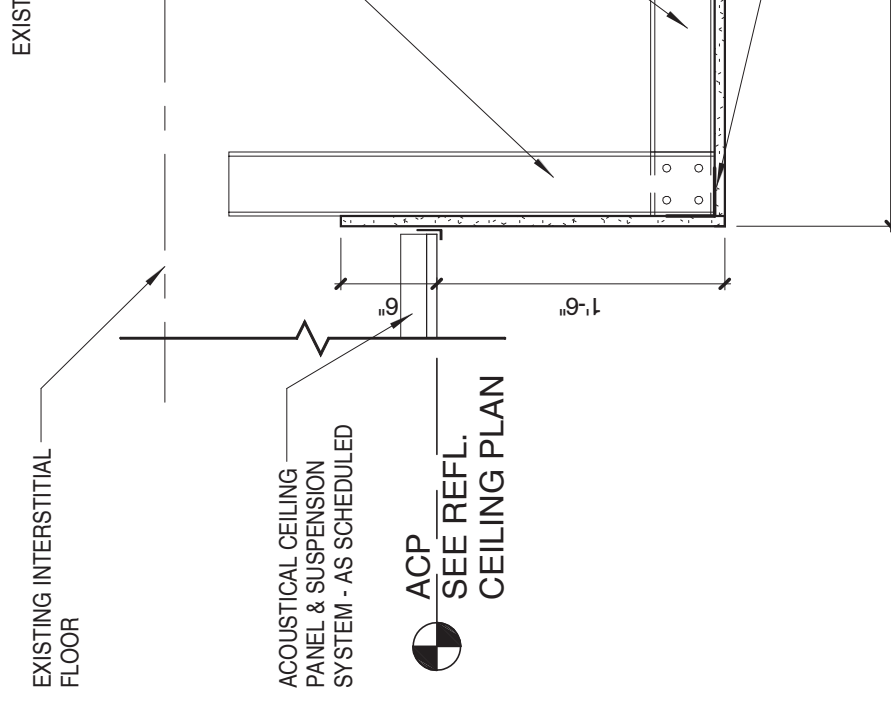
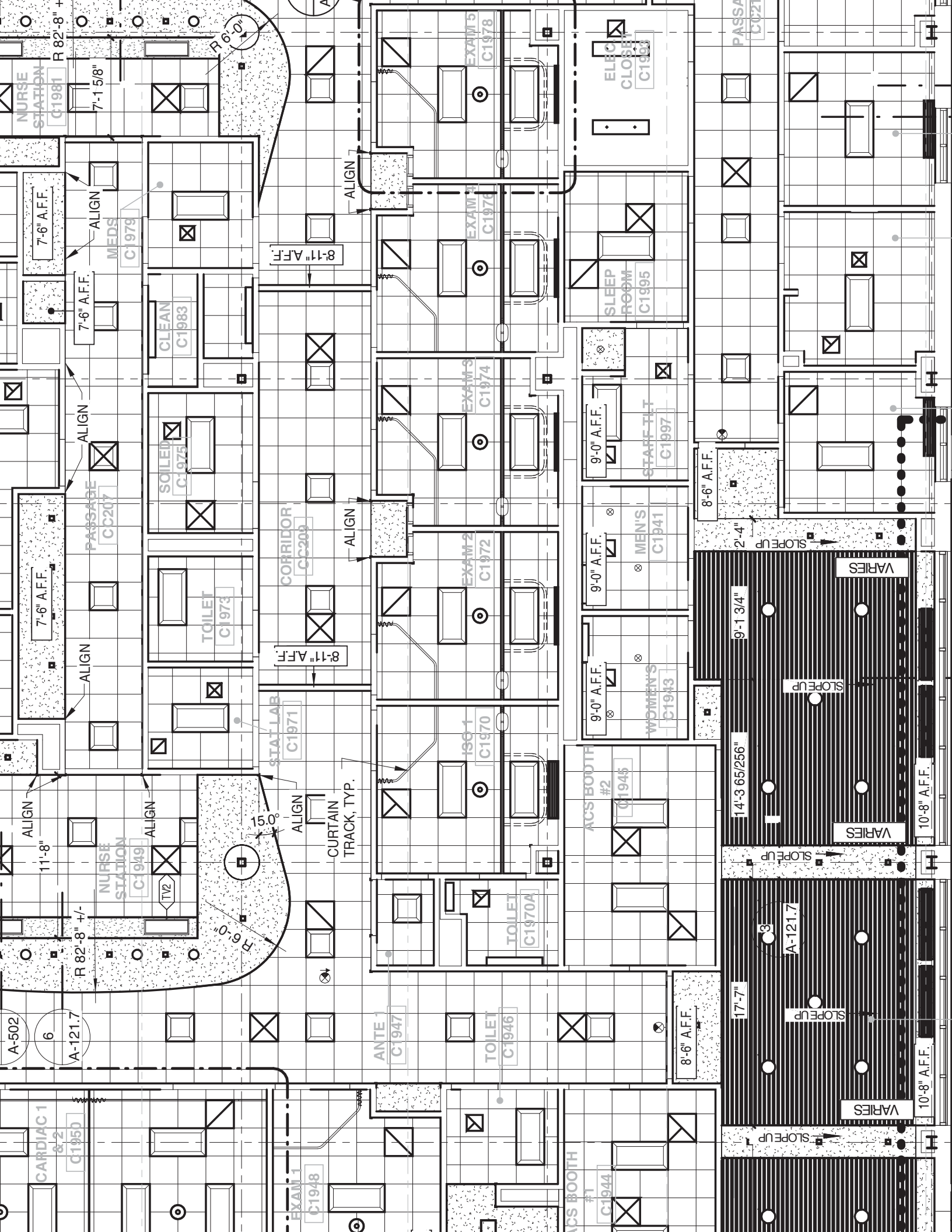


SECTION DETAIL @ REGISTRATION
1/4" = 1'-0"

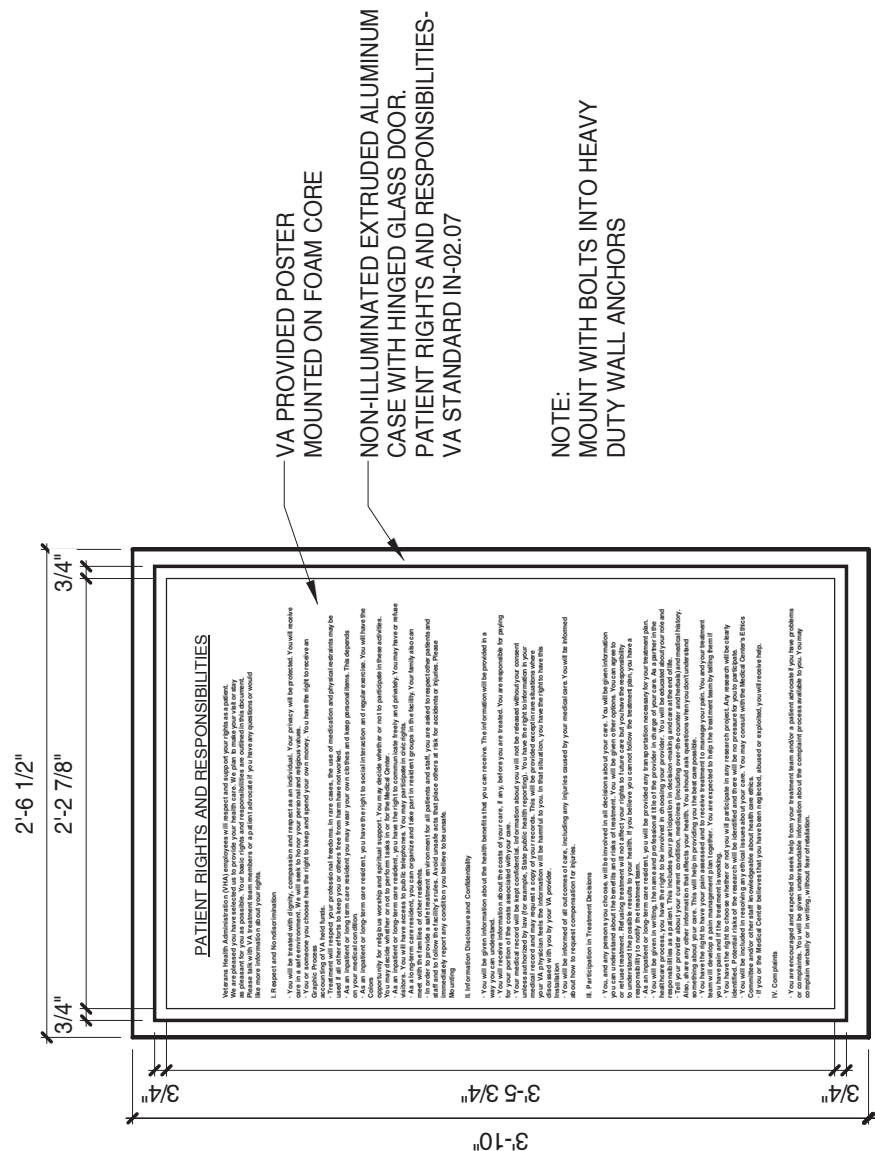
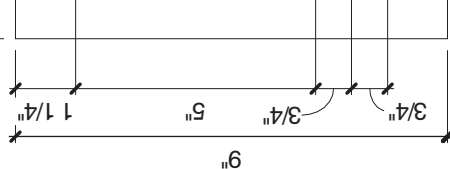




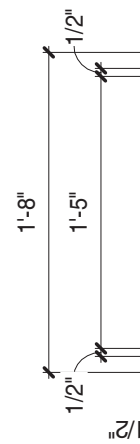
TYPE 'F' S
3" = 1'-0"

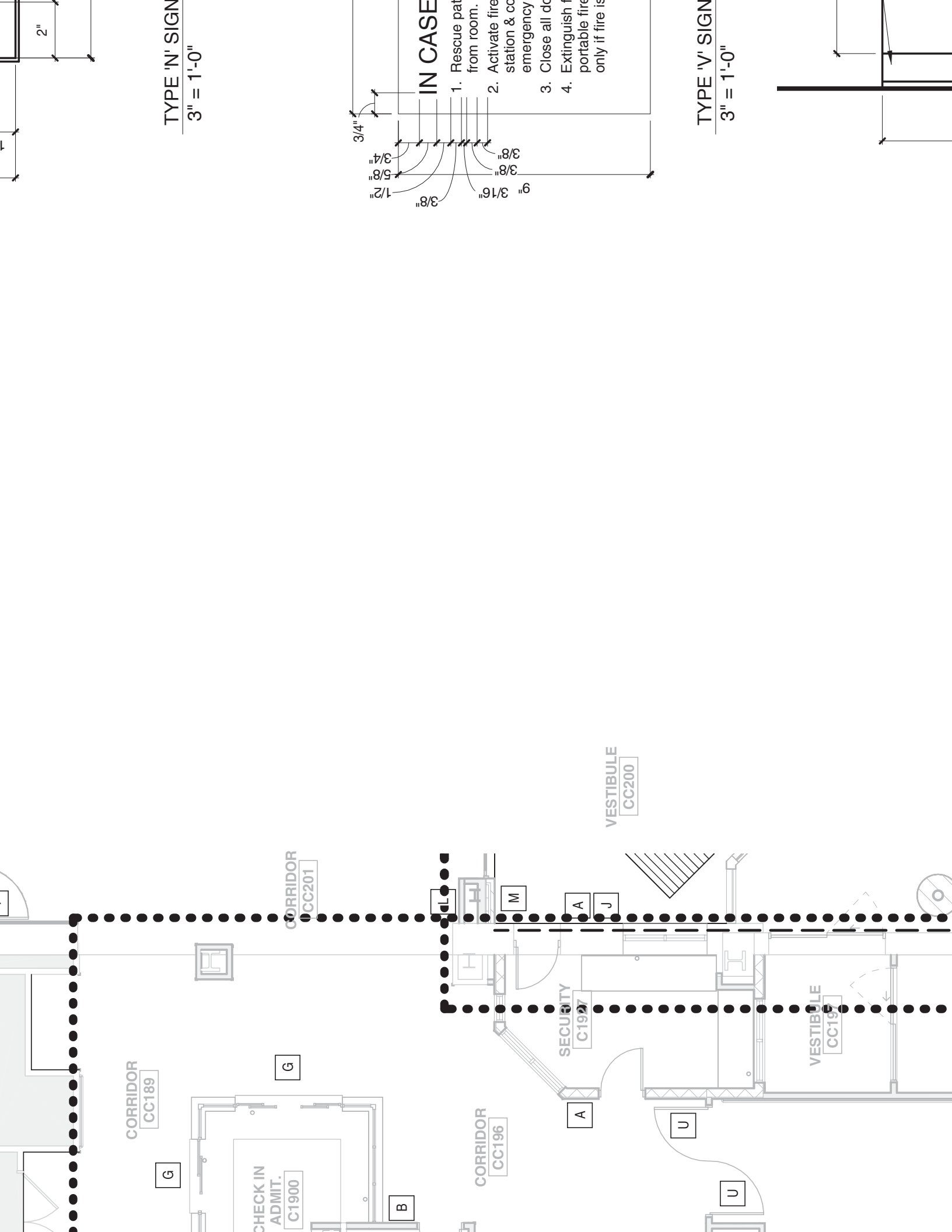


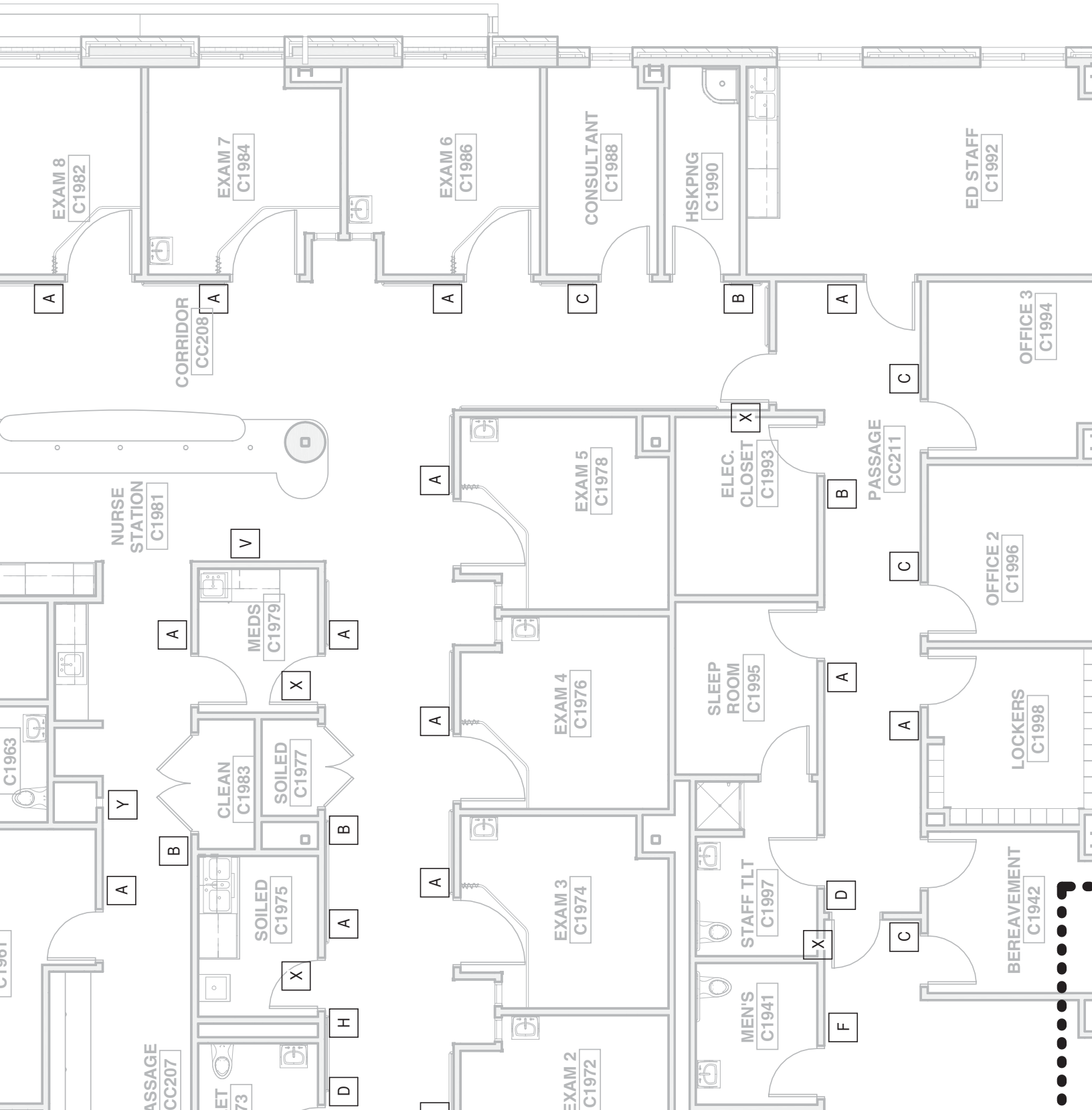
TYPE 'G' S
3" = 1'-0"

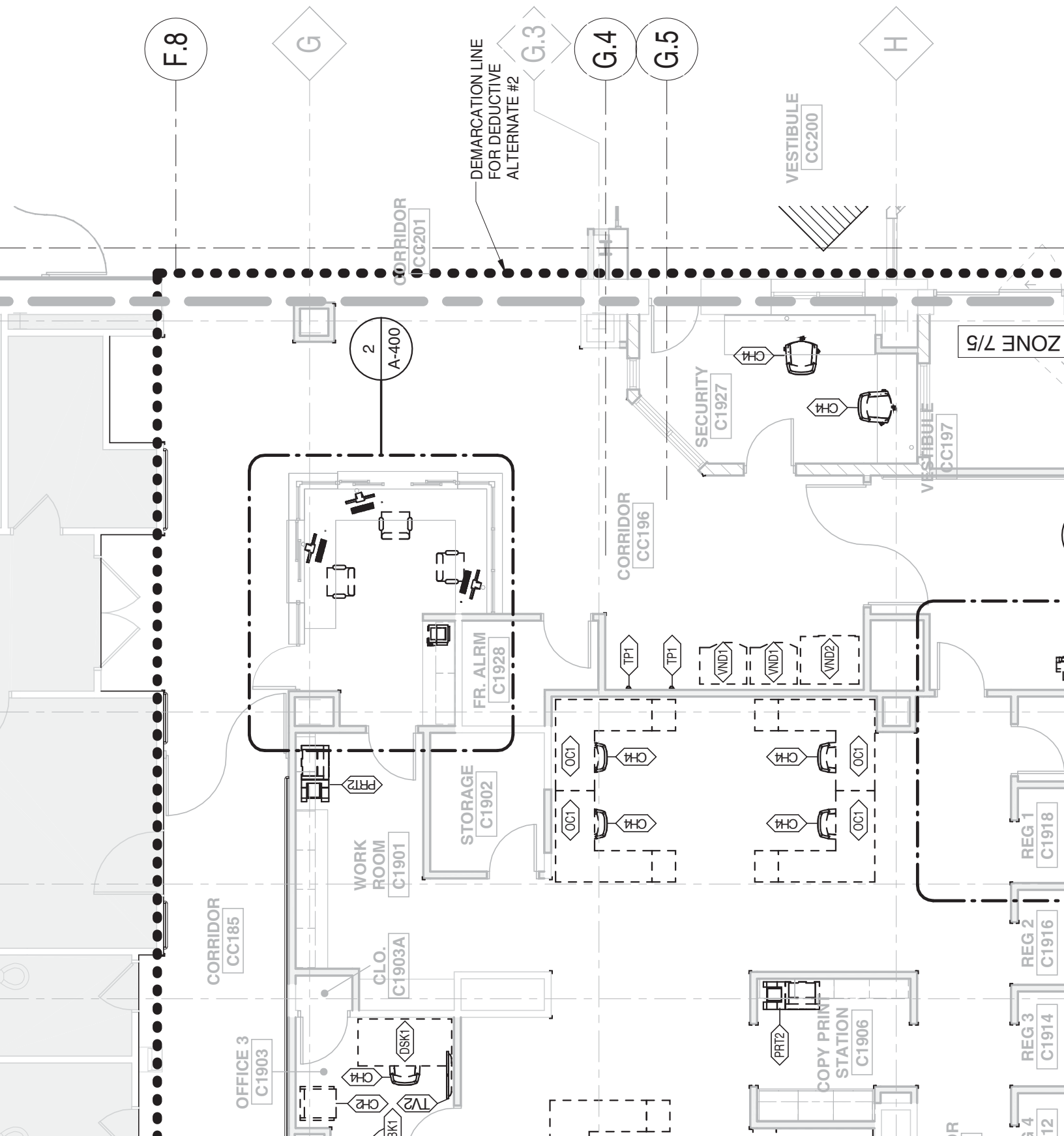


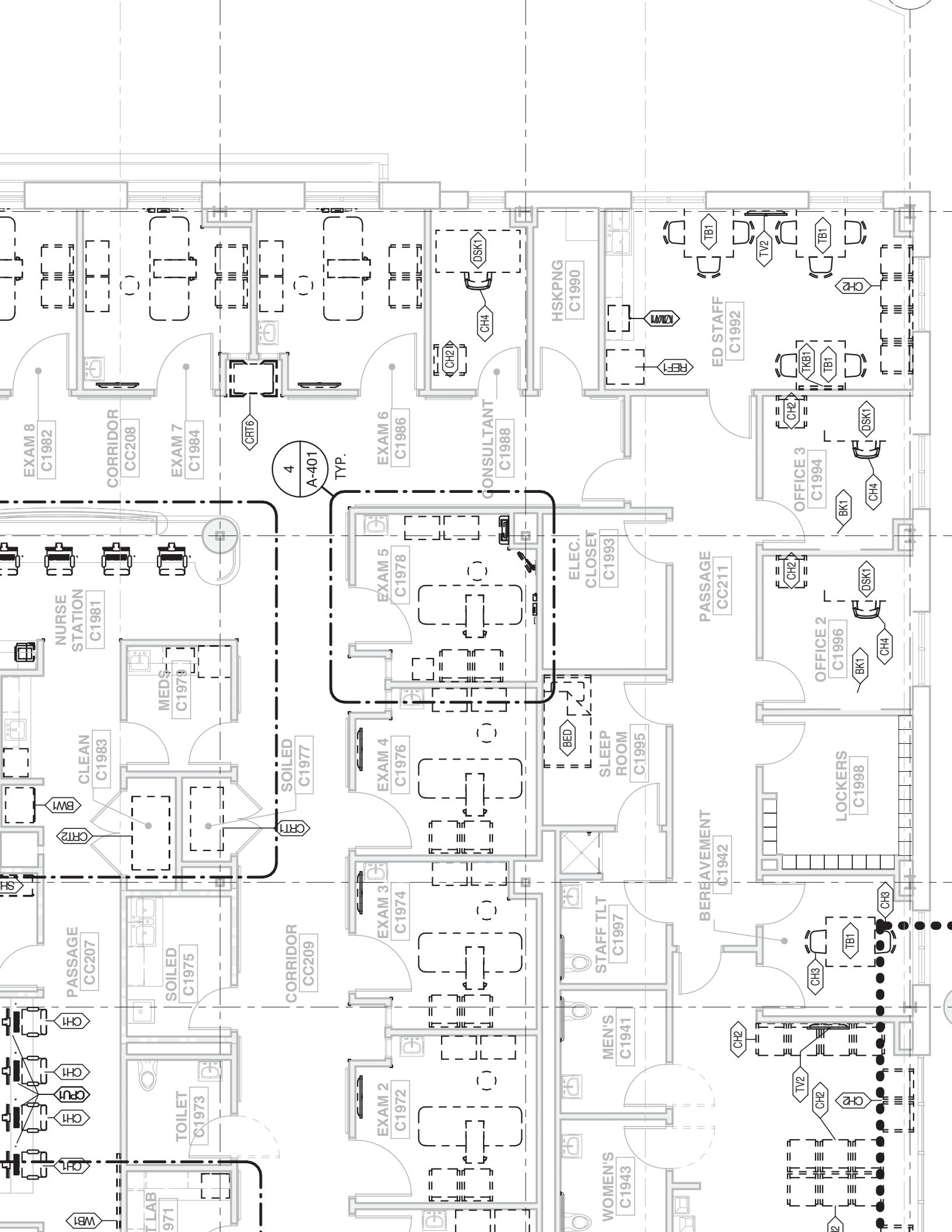
TYPE 'K' SIGNAGE
1" = 1'-0"

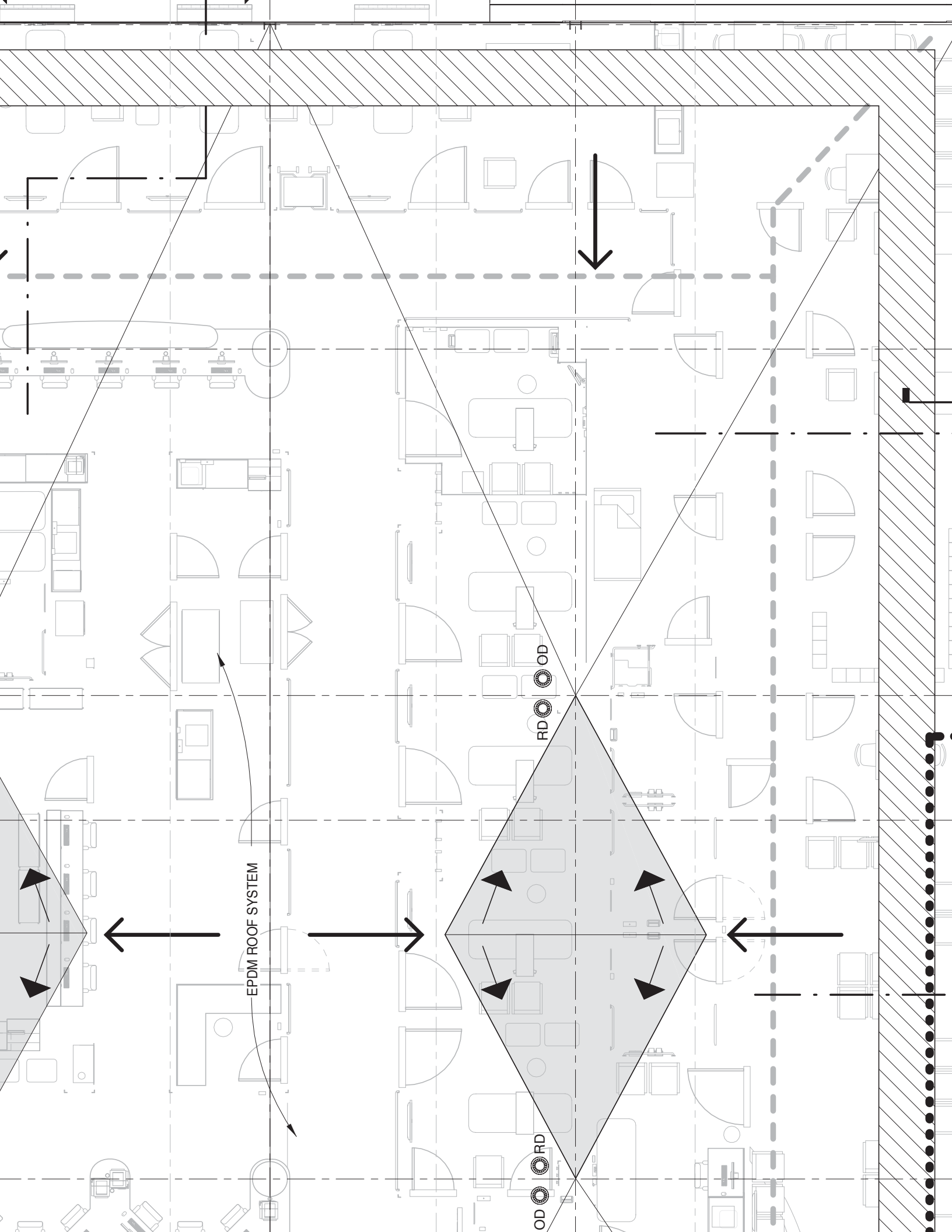


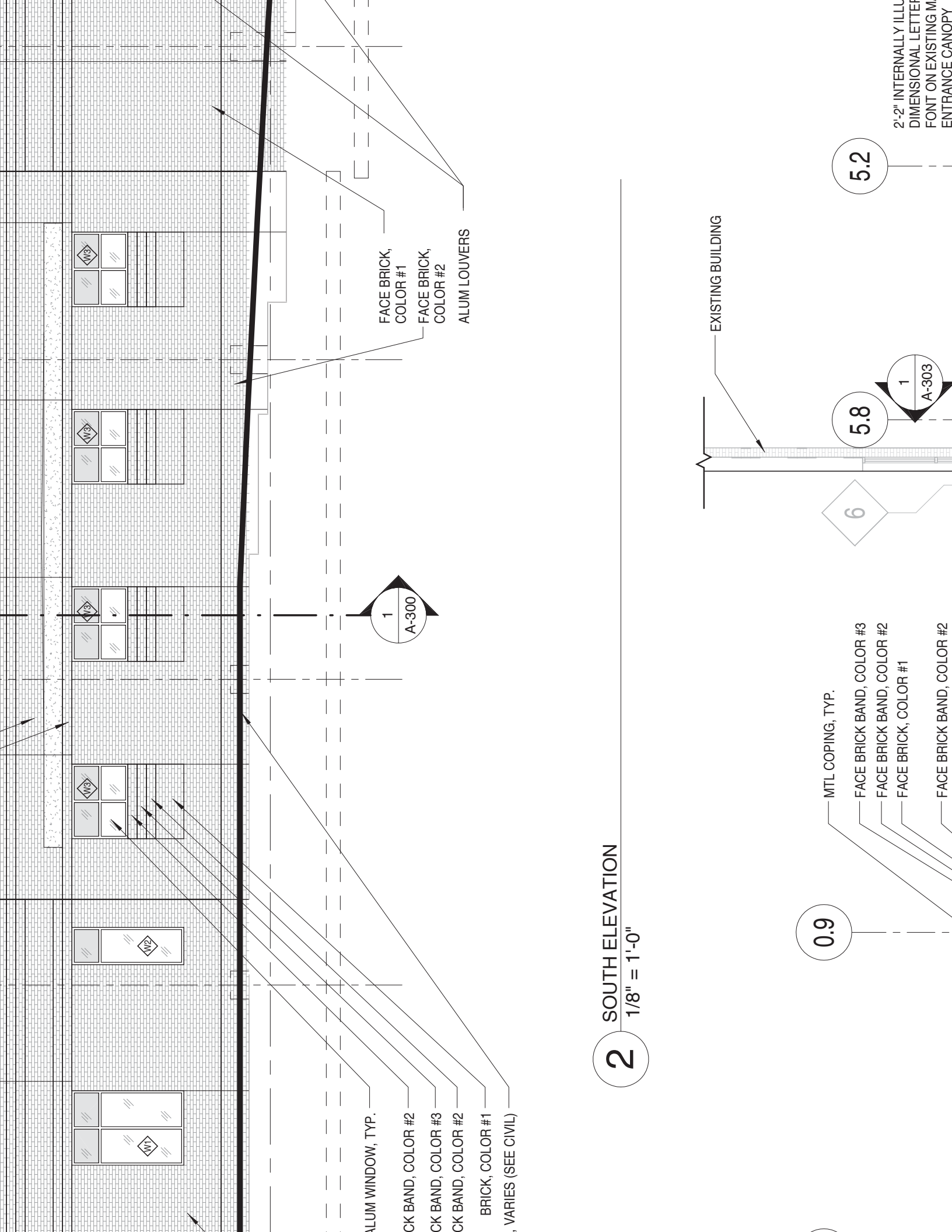












2 SOUTH ELEVATION
1/8" = 1'-0"

- ALUM WINDOW, TYP.
- CK BAND, COLOR #2
- CK BAND, COLOR #3
- CK BAND, COLOR #2
- BRICK, COLOR #1
- , VARIES (SEE CIVIL)
- FACE BRICK, COLOR #1
- FACE BRICK, COLOR #2
- ALUM LOUVERS

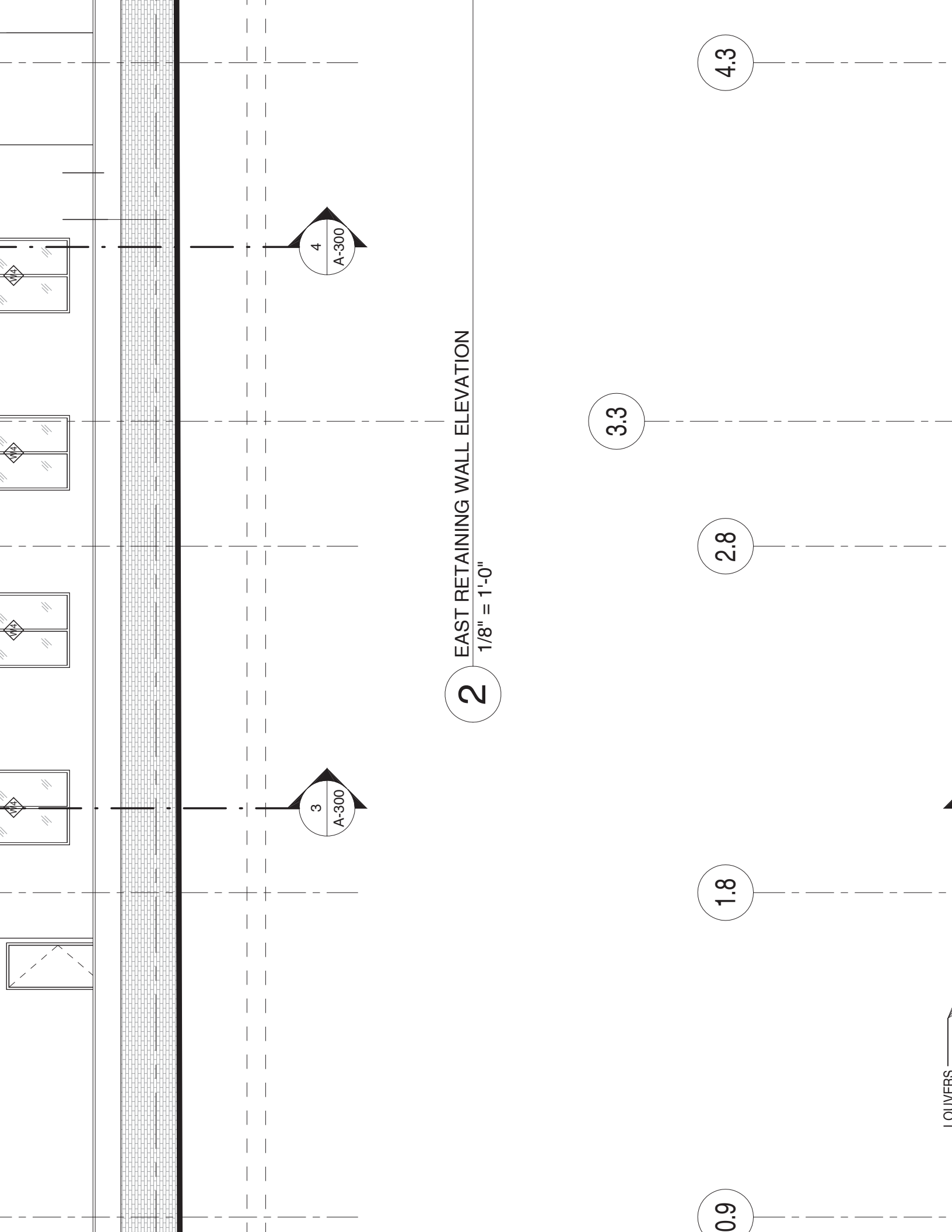
- 0.9
- MTL COPING, TYP.
- FACE BRICK BAND, COLOR #3
- FACE BRICK BAND, COLOR #2
- FACE BRICK, COLOR #1
- FACE BRICK BAND, COLOR #2

- 6
- 5.8
- 1 A-300

5.2

2'-2" INTERNALLY ILLUMINATED
DIMENSIONAL LETTER
FONT ON EXISTING MASONRY
ENTRANCE CANOPY

EXISTING BUILDING



2 EAST RETAINING WALL ELEVATION
1/8" = 1'-0"

4
A-300

3
A-300

4.3

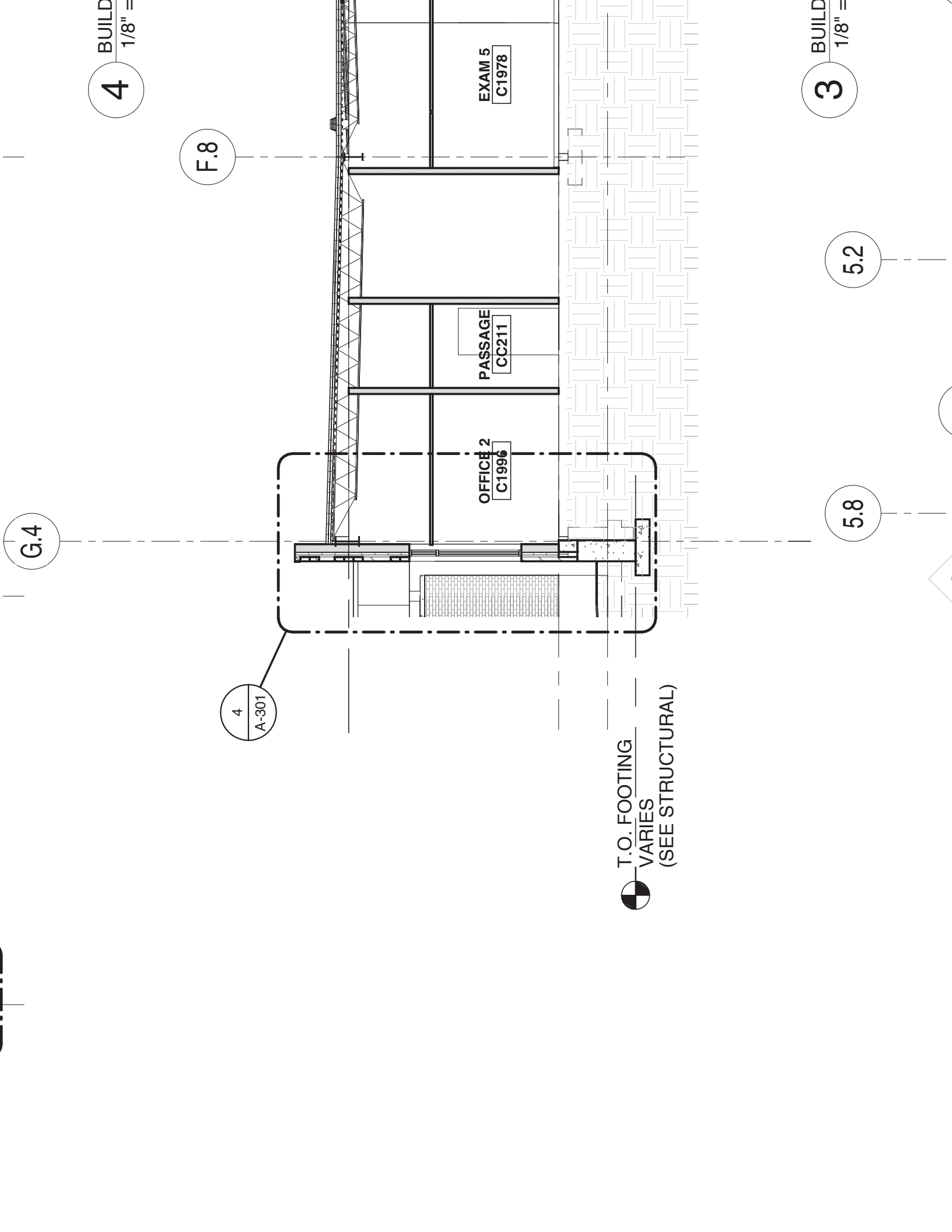
3.3

2.8

1.8

0.9

1 OLIVERS



SEE 1/A-301 FOR
TYPICAL ROOF
NOTES

D.85

● BOTTOM OF DECK
VARIES
(SEE STRUCTURAL)

● BOTTOM OF DECK
VARIES
(SEE STRUCTURAL)

● FIRST FLOOR
INTERSTITIAL
111'-5"

5A

10A

4
A-502

SEE 1/A-301 FOR
TYPICAL ROOF
NOTES

D

SEE 1/A-301 FOR
TYPICAL ROOF
NOTES

RAISE GYP. TO BOTTOM OF
DECK & SEAL TO CREATE
PLENUM (SEE MECH.)

G.3

G.4

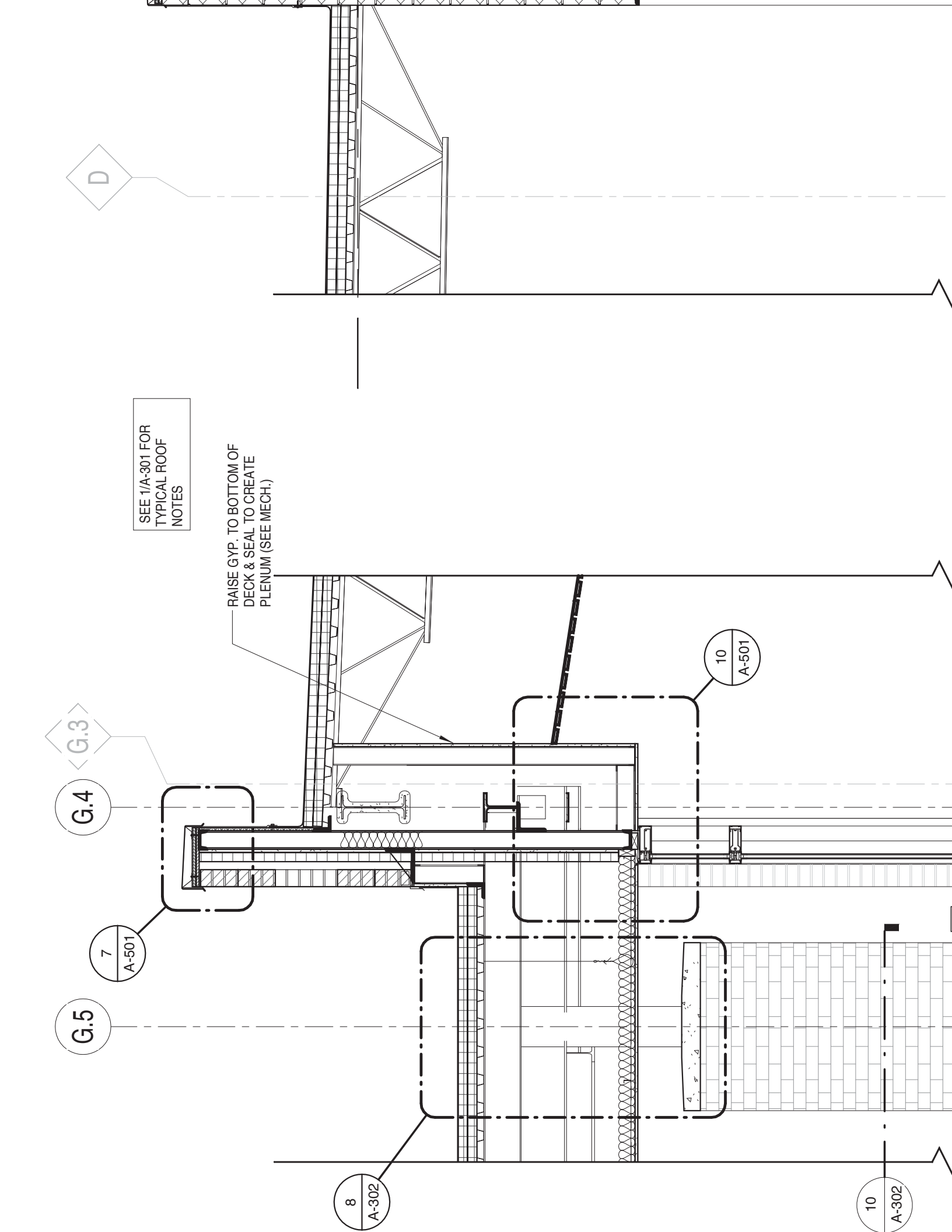
7
A-501

G.5

8
A-302

10
A-501

10
A-302



EPDM ROOFING SYSTEM ON 2
LAYERS OF 2" RIGID INSULATION
ON SLOPED ROOF STRUCTURE

STL. ROOF DECK (SEE STRUCT.)

4" 20 GA. METAL STUDS
BRACING @ 4'-0" O.C. AT
TO STRUCTURE ABOVE

BACKER ROD & SEALANT
ENTIRE PERIMETER

14
A-501

5
A-502

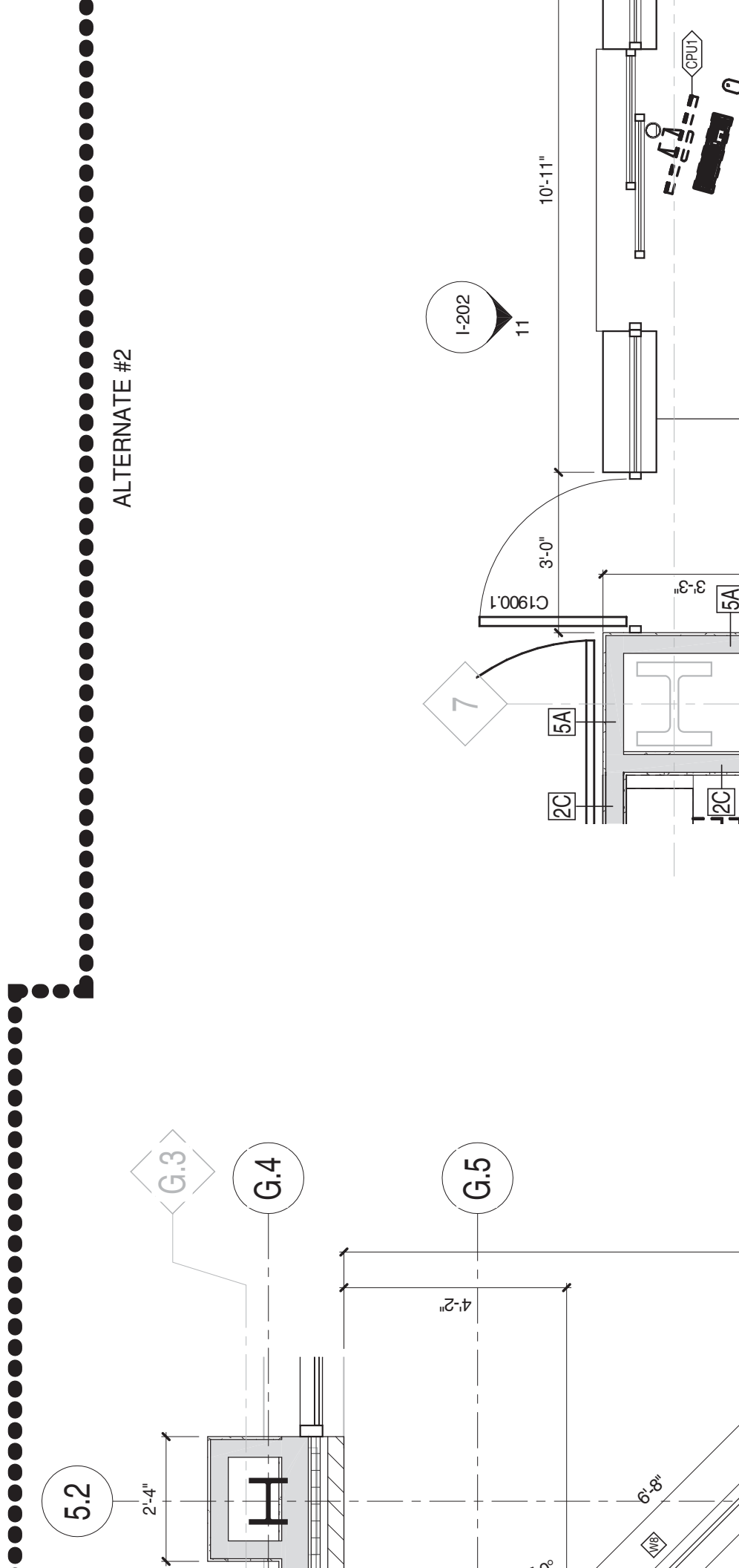
SPRAYED-ON FIREPROOFING
ON STL. BEAMS & JOIST, TYP.
(SEE STRUCT.)

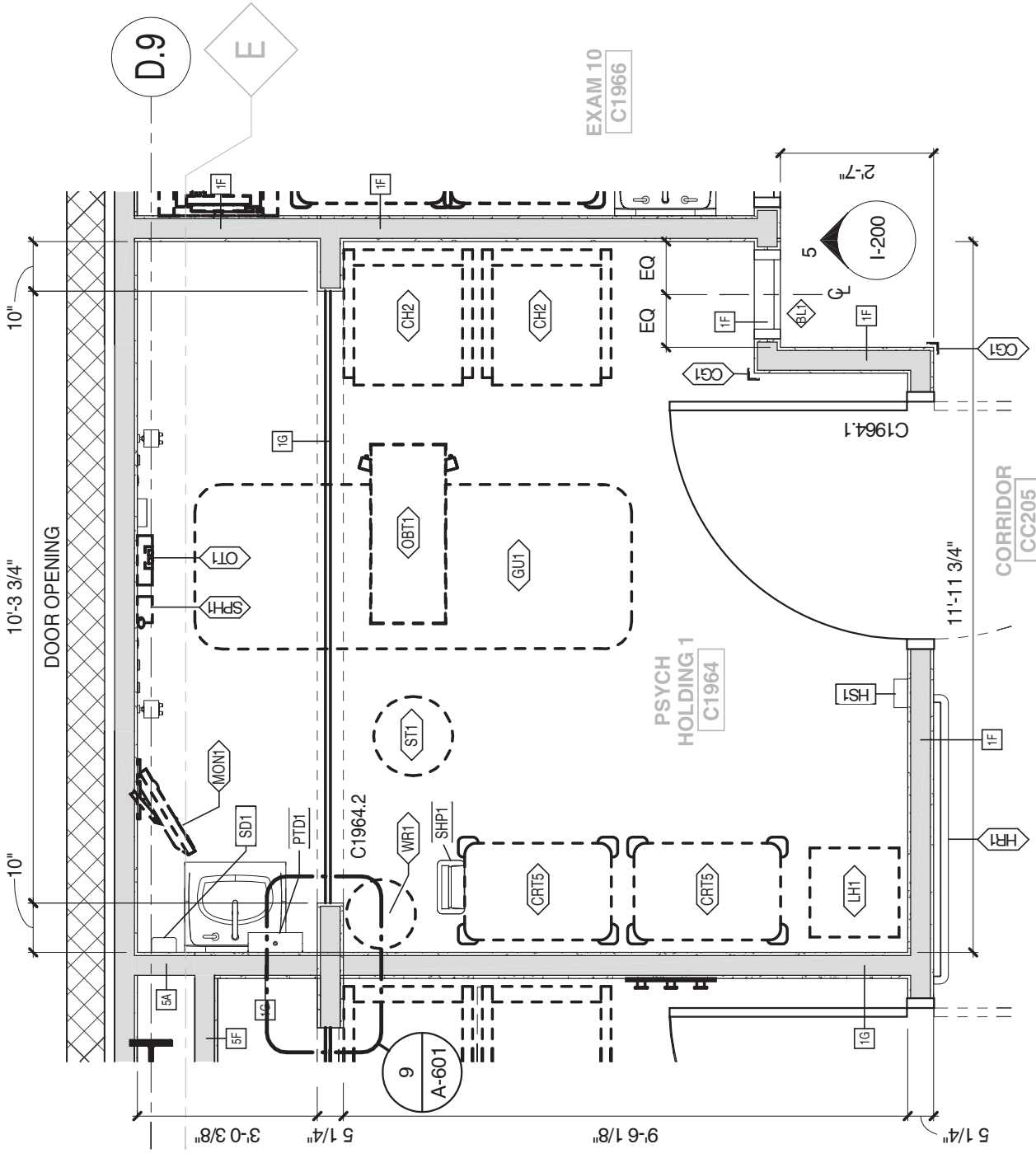
ACT. SEE REFL. CEILING PLAN

1A

EMS VSTBL
CC203

AUTOMATIC ALUMINUM ENTRANCE

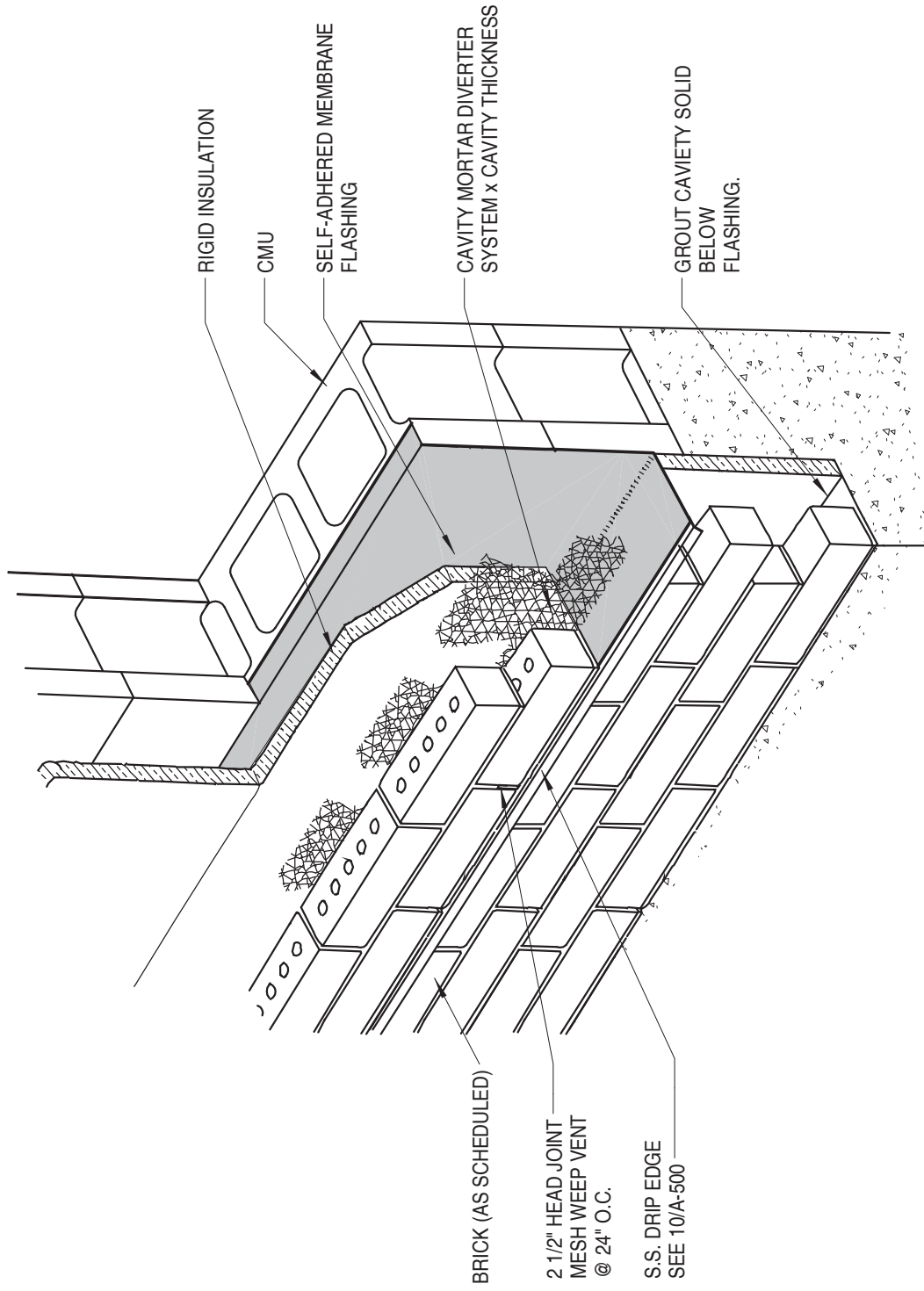




6 TYPICAL PSYCH ROOM
3/8" = 1'-0"

C1960 & C1962 SIM.

5.2

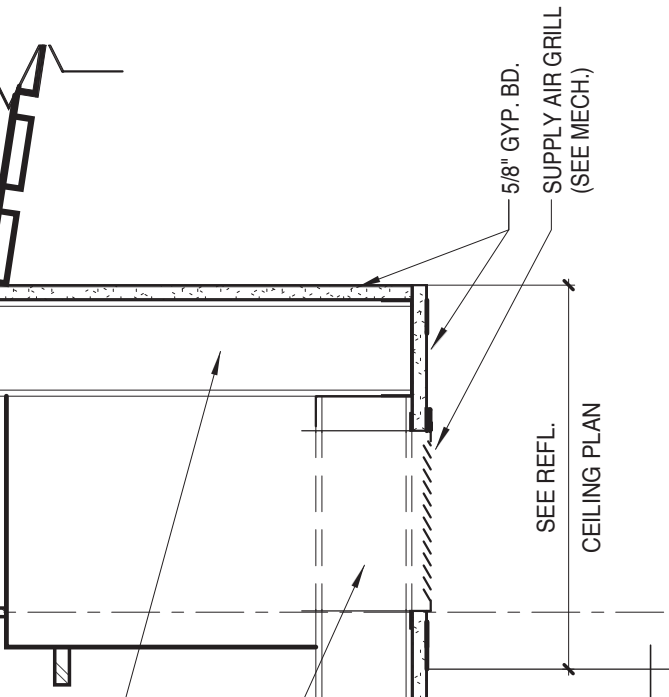
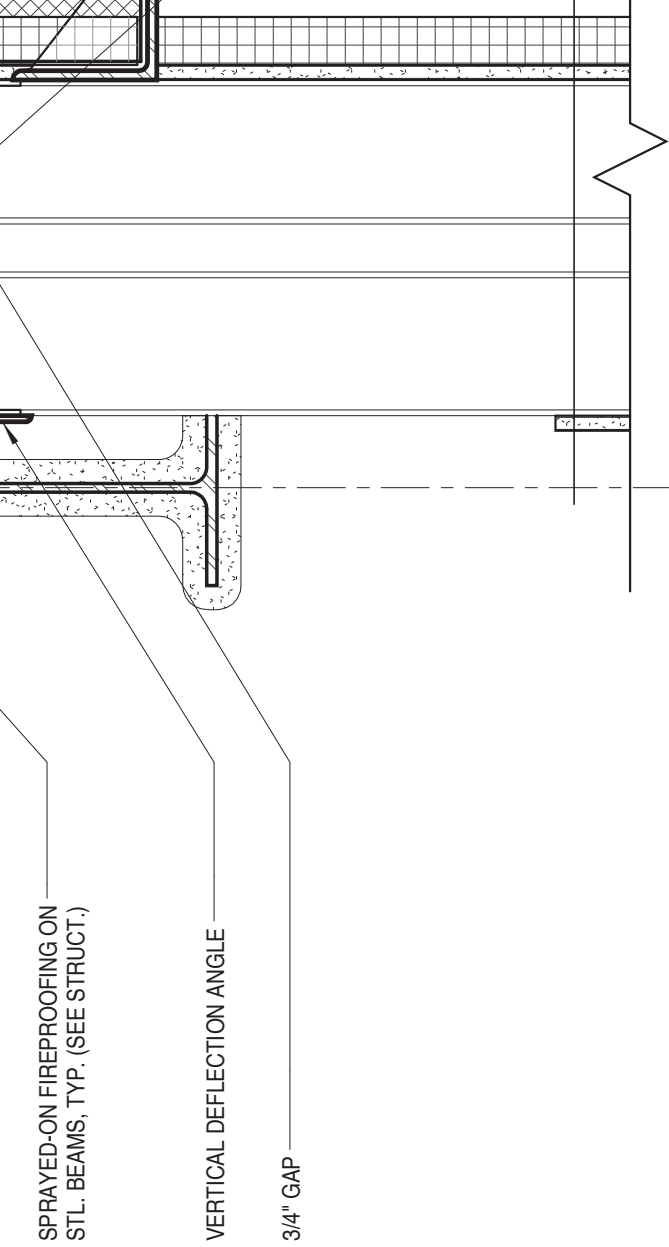


NOTE:
ALL THROUGH-WALL BASE FLASHING AND WEEPS ARE TO OCCUR AT THE
SECOND MORTAR JOINT ABOVE GRADE, SOLID GROUT ANY CAVITY
BELOW. STEP UP & DOWN PER GRADE

11 MASONRY VENEER (ON CMU) BASE FLASHING DETAIL

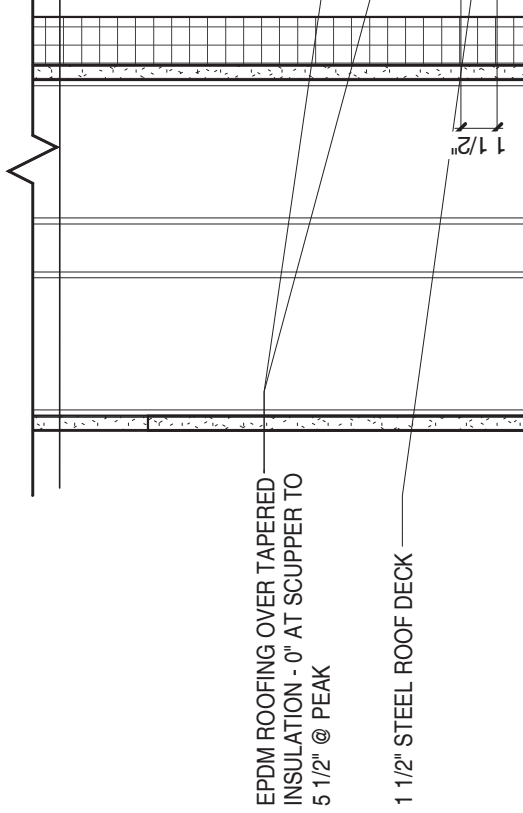
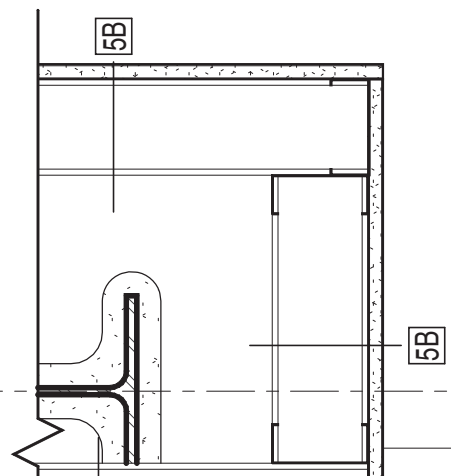
3/4" = 1'-0"

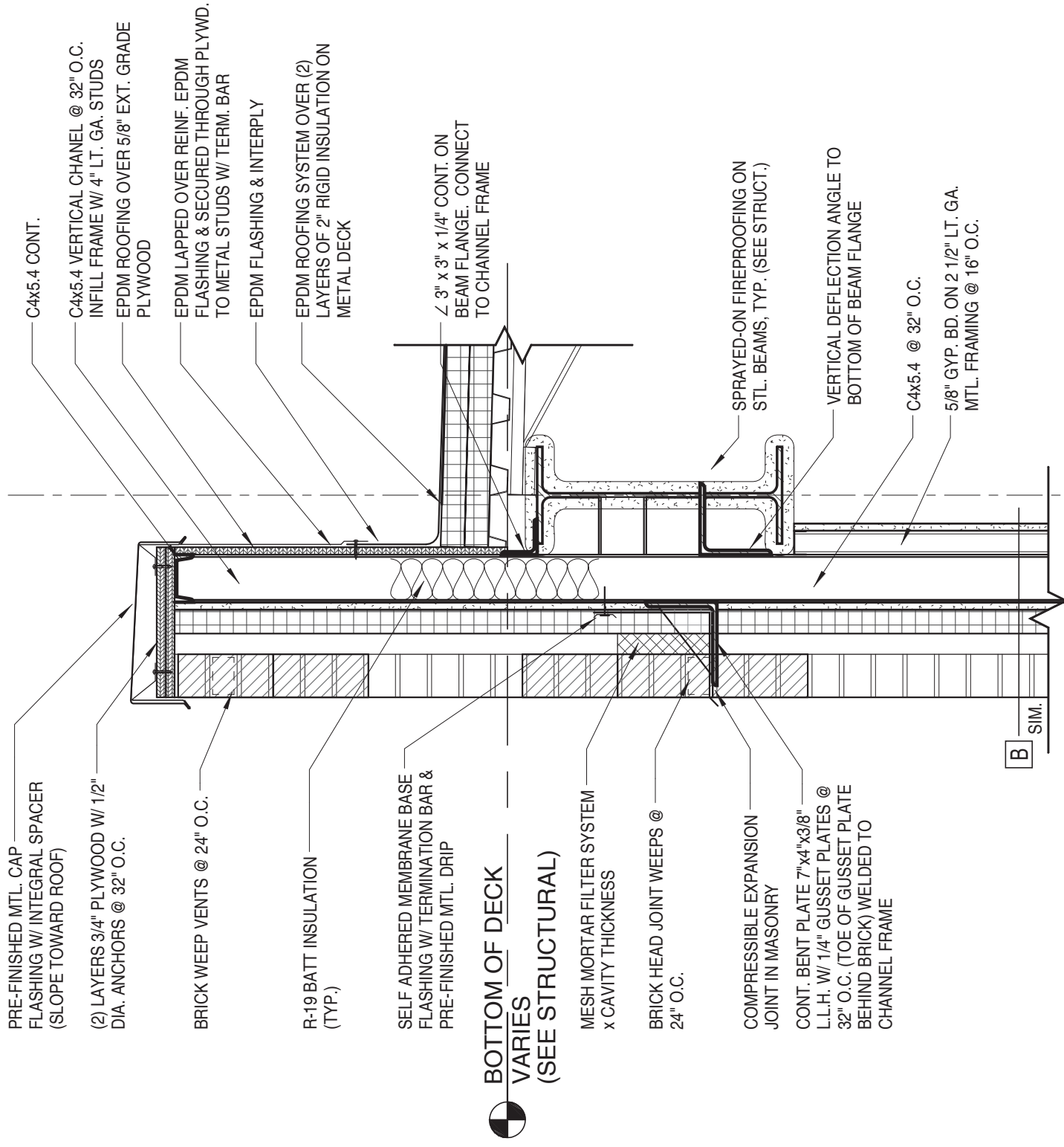
UL.



7 ROOF & TOP OF WALL DETAIL
1 1/2" = 1'-0"

G.4

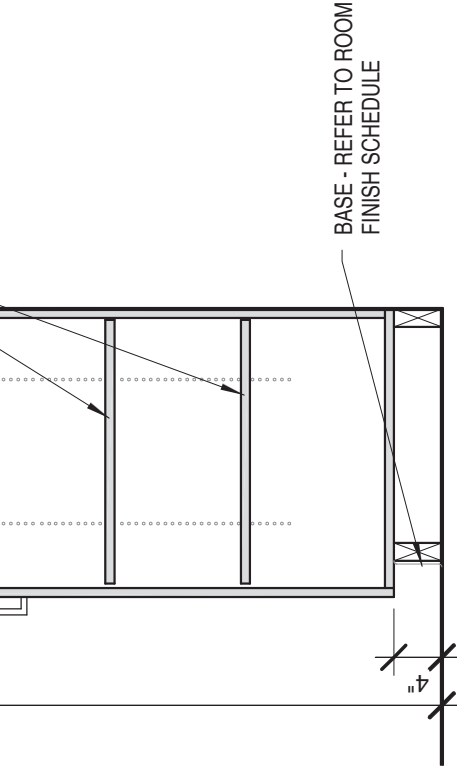




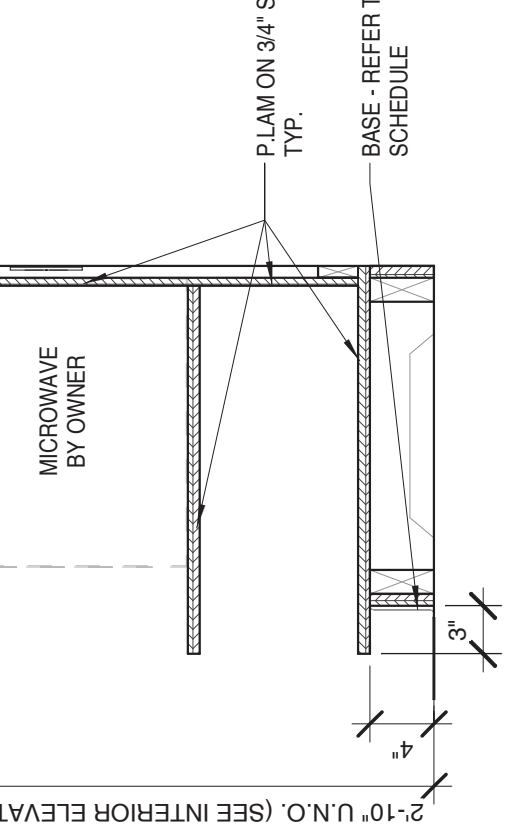
EPDM ROOFING
LAYERS OF 2" RIGID
ON SLOPED ROOF

STL. ROOF DECK

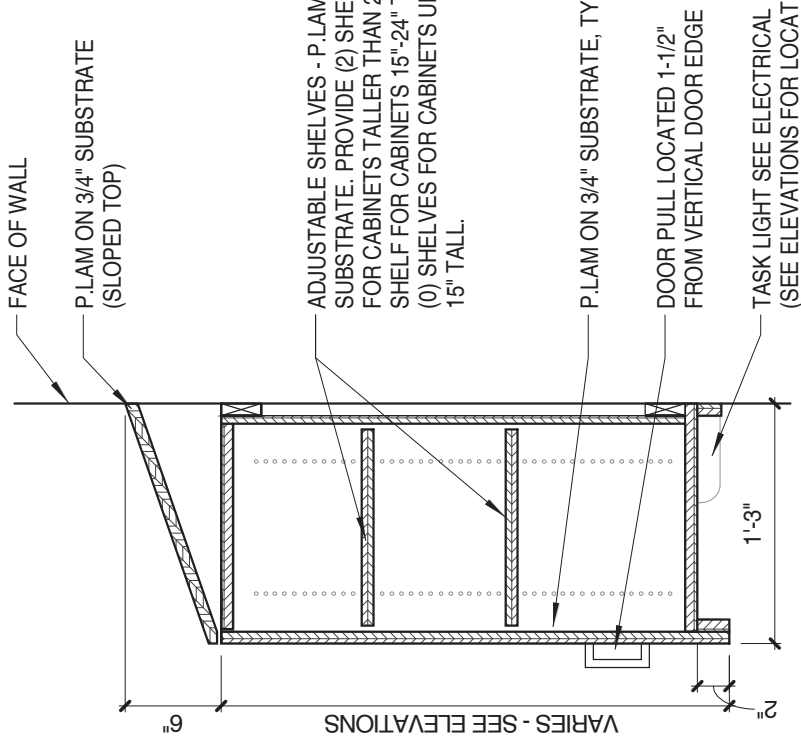
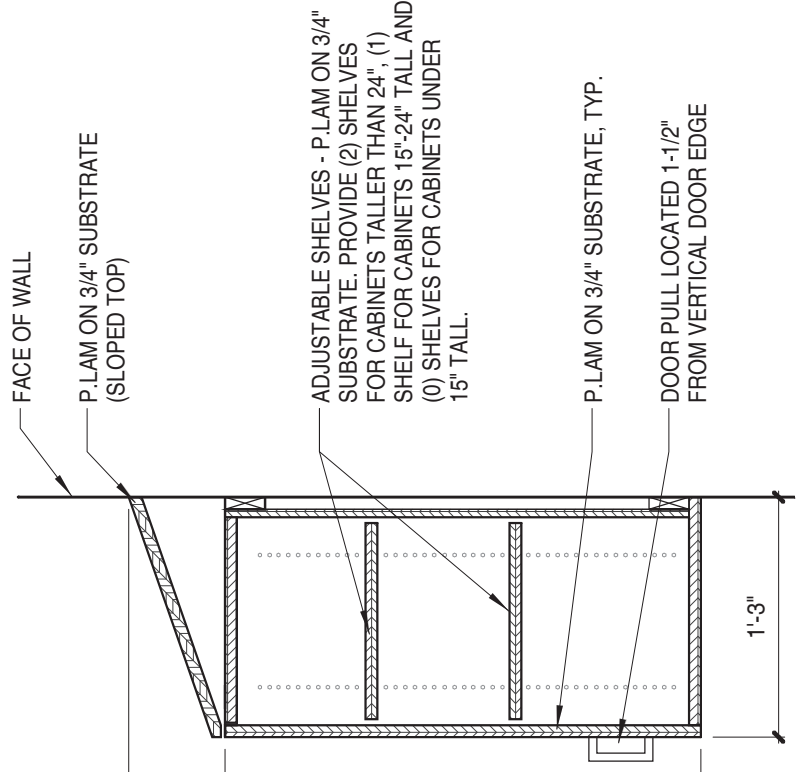
SPRAYED-ON FIREPROOFING
ON STL. BEAMS & JOISTS
(SEE STRUCT.)

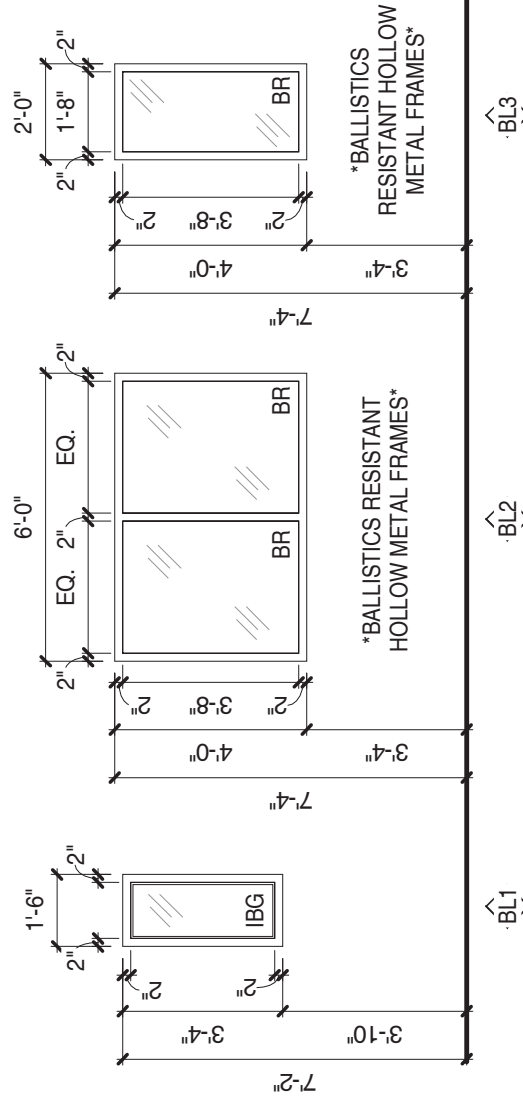
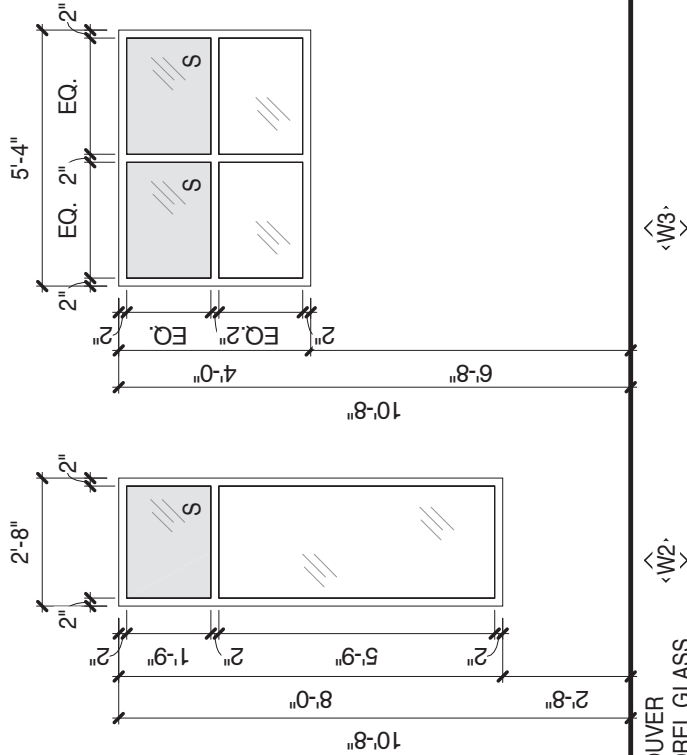


15 MILLWORK TALL CABINET
3/4" = 1'-0"



14 MICROWAVE BASE CABINET
1" = 1'-0"





FRAME TYPES

BORROWED LITE FRAME TYPES

1/4" = 1'-0"

