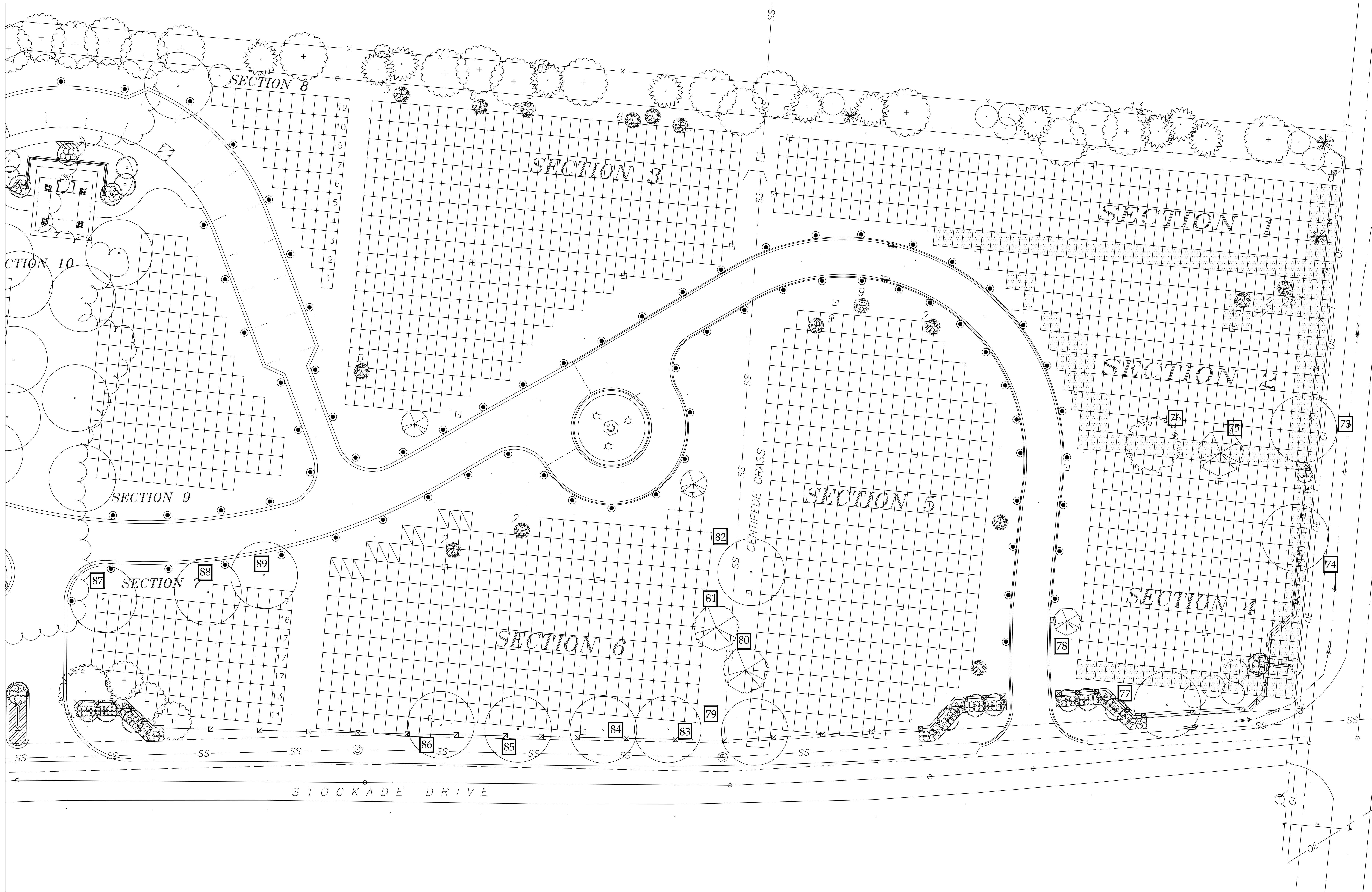


one-eighth inch = one foot
one-quarter inch = one foot
one-half inch = one foot
three-eighths inch = one foot
one inch = one foot
one and one-half inches = one foot
three inches = one foot



| | | | | | | | | | | | | | | | | | | |
|--|--|------------------|--|--|--|--|--|--|---|--|----------------------------|--|--|--|--|--|---|----------------------------|
| UPDATED DRAWING WITH AS-BUILT INFORMATION Revisions | | 10/23/00 Date | | | | | | | National Cemetery System Memorial Service Network II Decatur, Georgia 30033 | | Drawing Title TREE PLAN | APPROVED: APPROVED: APPROVED: CHIEF ENGINEERING SECTION APPROVED: CEMETERY DIRECTOR | APPROVED: APPROVED: APPROVED: APPROVED: | Project Title BURIAL AREA DEVELOPMENT AT FLORENCE NATIONAL CEMETERY | Building Number Checked Drawn MPK | Location FLORENCE NATIONAL CEMETERY FLORENCE, SC | Date 08/17/04 Project No. DRAWING NO. 843PL001 FILE NAME | Veterans Administration |
|--|--|------------------|--|--|--|--|--|--|---|--|----------------------------|--|--|--|--|--|---|----------------------------|