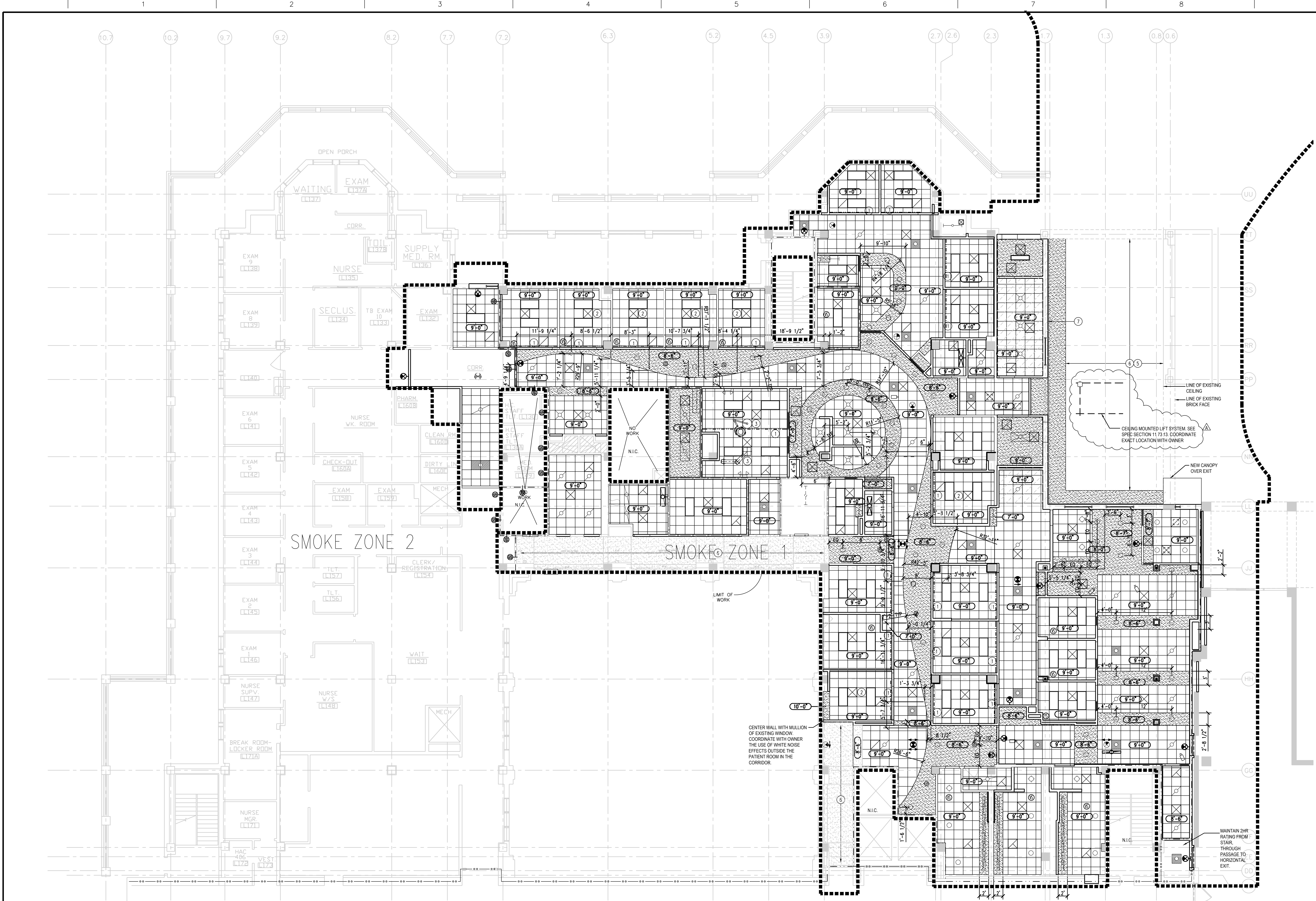


three inches = one foot
one and one half inches = one foot
one inch = one foot
three quarters inch = one foot
three eighths inch = one foot
one half inch = one foot
one quarter inch = one foot
one eighth inch = one foot



CEILING LEGEND

HOURLY RATING

1-HR RATED WALL

2-HR RATED WALL

1-HR SMOKE BARRIER

2-HR SMOKE BARRIER

SMOKE BARRIER

PRIMARY LIMITS OF CONSTRUCTION OR PHASE

EXISTING CONST.

NEW CONSTRUCTION - EXTEND TO UNDERSIDE OF STRUCTURE ABOVE

ACOUSTICAL CEILING TILE

GYPSON BOARD

CEILING HEIGHT ABOVE FLOOR

CUBICLE CURTAIN TRACK

FLUORESCENT LIGHT FIXTURES - RE: E001

RECESSED DOWN LIGHT

EXIT LIGHT

ACCESS PANEL

CAMERA

MECHANICAL SUPPLY DIFFUSER

MECHANICAL RETURN GRILLE

MECHANICAL EXHAUST GRILLE

- SPECIFIC CEILING NOTES
1. REFER TO C SERIES DRAWING FOR GENERAL NOTES.

2. REFER TO C101 FOR LIFE SAFETY PLAN.

3. REFER TO AS01 FOR FIRE PROTECTION DETAILS.

4. MAJOR MECHANICAL AND ELECTRICAL ITEMS ARE SHOWN ON THIS DRAWING FOR GENERAL LOCATION WITHIN THE CEILING SYSTEM. SEE MECHANICAL AND ELECTRICAL DRAWING FOR INFORMATION DESCRIBING THE SYSTEMS TO WHICH THEY BELONG AND FOR ADDITIONAL SECONDARY CEILING MOUNTED DEVICES.

5. CEILING TILES WHICH ARE REMOVED AND REPLACED FOR WORK ABOVE CEILING SHALL BE HANDLED WITH CARE AND PUT BACK IN PLACE. REPLACE BROKEN TILES AND MATCH ADJACENT FROM OWNER STOCK.

- KEYED CEILING NOTES
1. CEILING MOUNTED CURTAIN TRACK.

2. COORDINATE OVERHEAD PATIENT LIFT WITH LIGHT, DIFFUSERS AND ABOVE CEILING UTILITIES.

3. COORDINATE CEILING MOUNTED BOOM AND EXAM LIGHT WITH ABOVE CEILING UTILITIES.

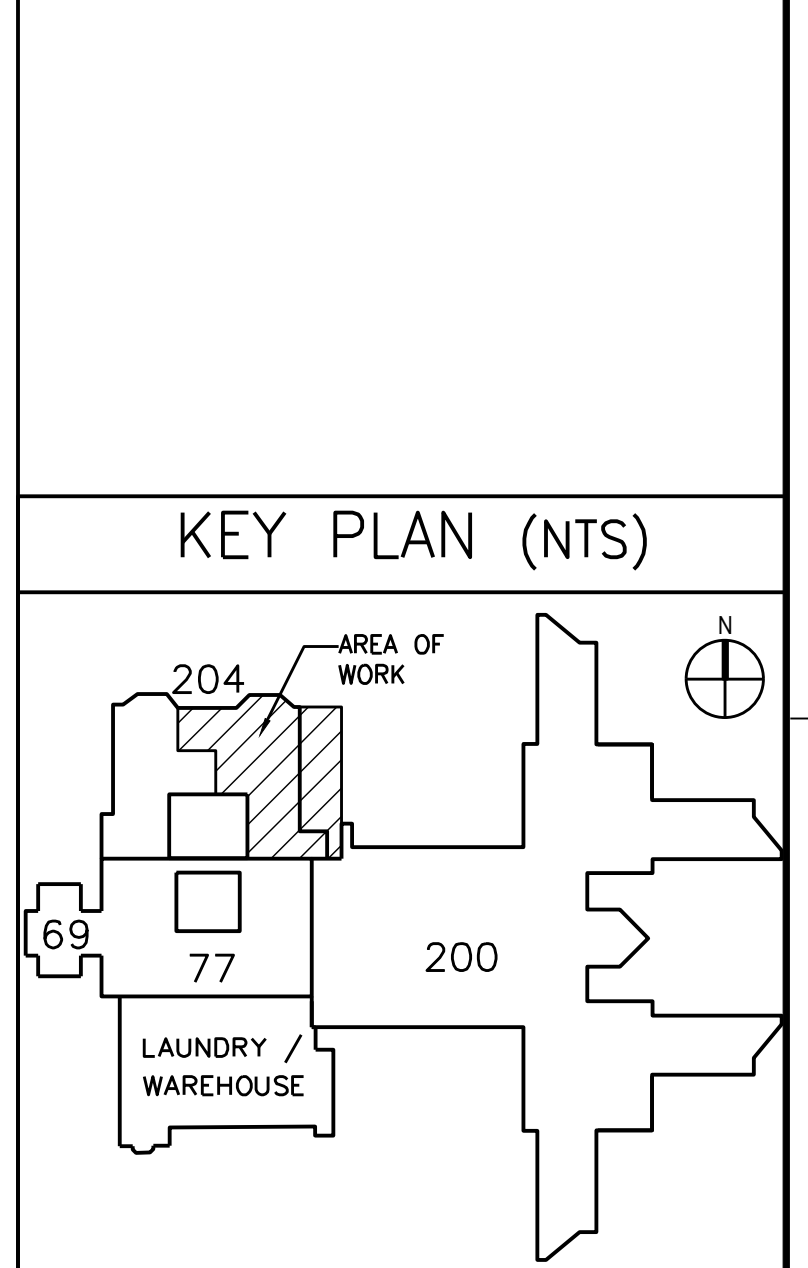
4. PATCH CEILING IN AMBULANCE DROP OFF CANOPY WITH MATERIAL TO MATCH EXISTING CEILING.

5. PREP ENTIRE CEILING TO RECEIVE RECEIVE PAINT.

6. EXISTING GYPSON WALL BOARD CEILING TO REMAIN.

7. NEW 2" WIDE CONTINUOUS ALUMINUM VENT.

8. CONTRACTOR TO PROVIDE DETAILED SPRINKLER HEAD LAYOUT FOR ARCHITECTURAL REVIEW PRIOR TO INSTALLATION OF SPRINKLER LINES.



1 RENOVATED REFLECTED CEILING PLAN

SCALE: 1/8"=1'-0"

<div>CONSULTANTS:</div>		<div>SEALS</div> <div>CHARLES WILLIAM BOYD REGISTERED ARCHITECT 4191 NORTH CAROLINA CHARLOTTE, N.C.</div>	<div>ARCHITECT/ENGINEERS:</div> <div><div>FreemanWhite</div><div>8845 Red Oak Blvd. Charlotte, NC 28217-5593 704.523.2230 phone 704.523.2235 fax</div></div>	<div>Drawing Title</div> <div>ARCHITECTURAL REFLECTED CEILING PLAN</div> <div>Approved Project Director</div>	<div>Project Title</div> <div>PROJECT # 621-320 EXPAND ER BUILDING 204 AT THE JAMES H. OUILLEN VA MEDICAL CENTER</div> <div>Location</div> <div>MOUNTAIN HOME, TN</div> <div>Date</div> <div>02.01.2012</div> <div>Checked</div> <div>CWB</div> <div>Drawn</div> <div>TAA/ CWL</div>	<div>Project Number</div> <div>621-320</div> <div>Building Number</div> <div>204</div> <div>Drawing Number</div> <div>A105</div> <div>Dwg. -- of --</div>	<div>FULLY SPRINKLERED</div> <div>Office of Construction and Facilities Management</div> <div>Department of Veterans Affairs</div>
-------------------------	--	---	--	---	--	---	--