

A
three inches = one foot

B
one and one-half inches = one foot

C
one inch = one foot

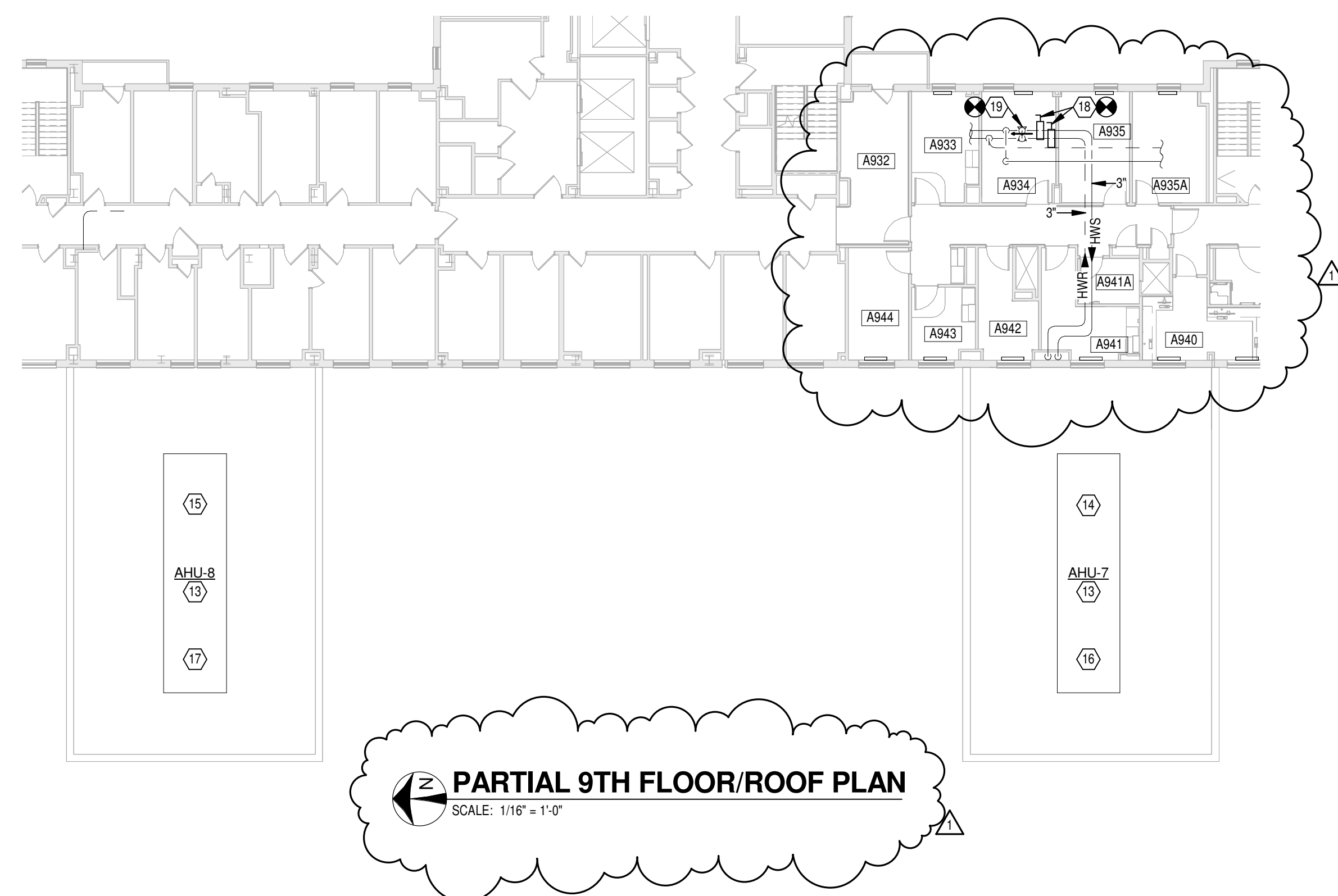
D
three-quarters inch = one foot

one-half inch = one foot

three-eighths inch = one foot

— one-quarter inch = one foot

one-eighth inch = one foot



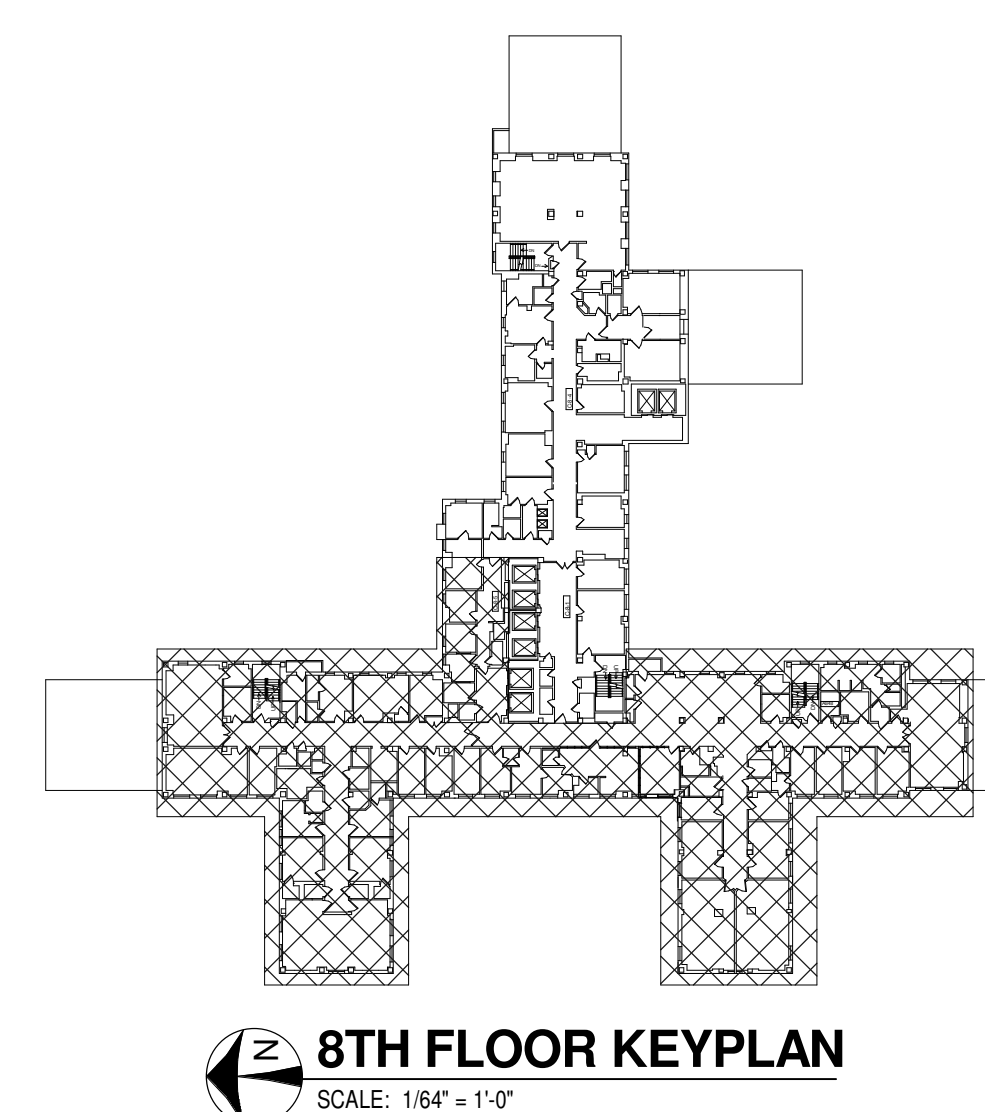
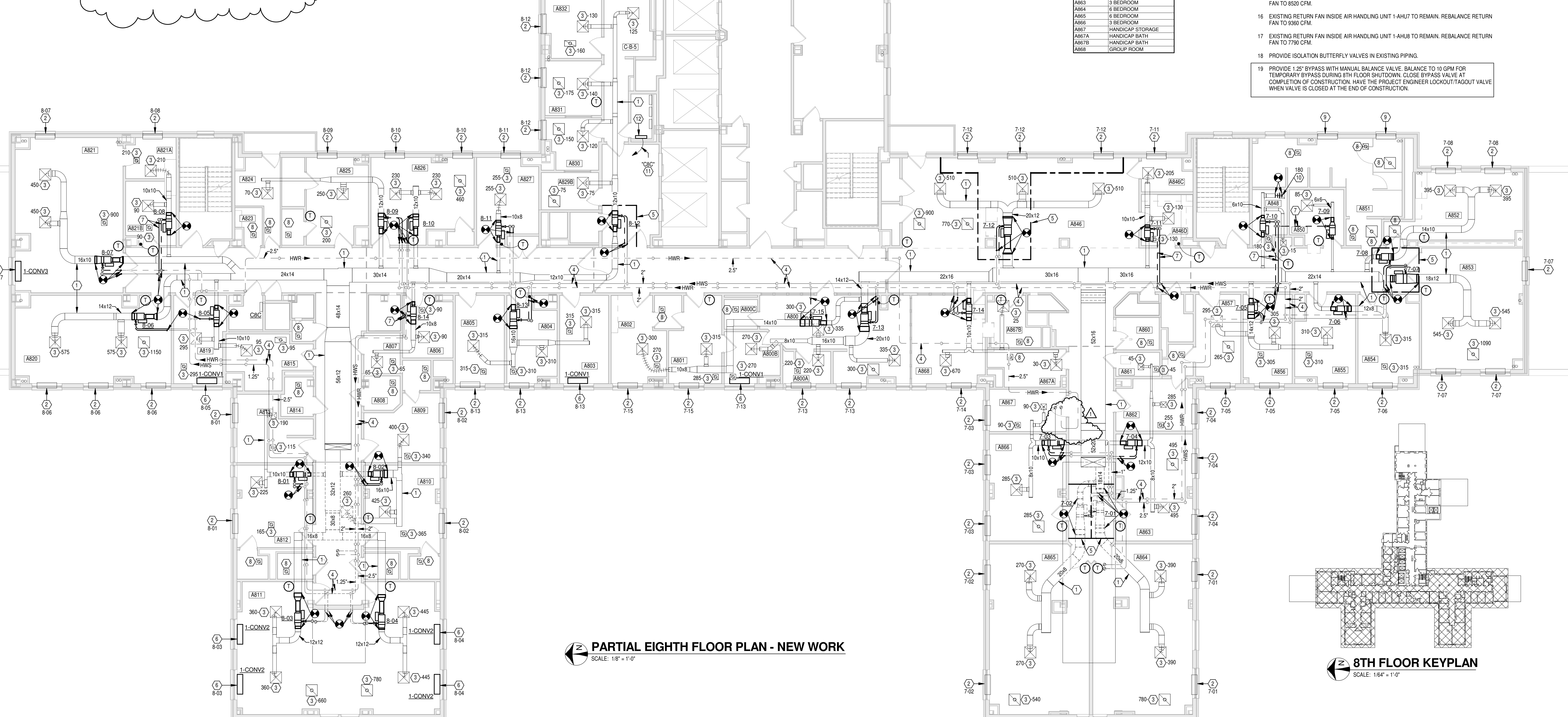
ROOM NAMES AND NUMBERS		
Number	Name	Station
A000	NURSES STATION	
A00A	STORAGE	
A00B	CHARTING ROOM	
A00C	TOILET	
A001	PHYSICIAN OFFICE	
A002	EXAM ROOM	
A003	OFFICE	
A004	PSYCH. OFFICE	
A005	OFFICE	
A006	OFFICE	
A007	OFFICE	
A008	STORAGE	
A009	OFFICE	
A010	GROUP ROOM	
A011	GROUP ROOM	
A012	RESEARCH DIRECTOR	
A013	OFFICE	
A014	BATH	
A015	STORAGE	
A018	COUNSEL OFFICE	
A020	GROUP ROOM	
A021	GROUP ROOM	
A02A	STORAGE	
A018B	OFFICE	
A023	HAC	
A024	HAC	
A025	STORAGE	
A026	DIRECTOR OFFICE	
A027	COORDINATOR OFFICE	
A029B	TECH OFFICE	
A030	OFFICE	
A031	STAT. OFFICE	
A032	OFFICE	
A033	DATA ROOM	
A046C	OFFICE	
A046D	KITCHEN	
A048	LAB	
A050	ADDICTION THERAPY	
A051	SHOWER	
A052	OFFICE	
A053	GROUP ROOM	
A054	OFFICE	
A055	THERAPY OFFICE	
A056	HEAD NURSE OFFICE	
A057	OFFICE	
A060	HAC	
A061	CLEAN LINEN	
A062	OFFICE	
A063	3 BED ROOM	
A064	5 BED ROOM	
A065	5 BED ROOM	
A066	3 BED ROOM	
A067	HANDICAP STORAGE	
A067A	HANDICAP BATH	
A067B	HANDICAP BATH	

GENERAL NOTES

A	REFER TO SHEET M001 FOR LEGEND, ABBREVIATIONS, AND ADDITIONAL GENERAL NOTES.
B	ALL HEATING HOT WATER SUPPLY AND RETURN RUNOUTS TO VAV BOXES SHALL BE 0.75" DIA. UNLESS NOTED OTHERWISE.
C	REFER TO AIR TERMINAL UNIT PIPING DETAILS ON SHEET M501 FOR SCOPE OF REPLACEMENT OF UNIT PIPING SPECIALTIES UNDER BID ITEM 1 AND BID ITEM 2.
D	BALANCING OF AIR DEVICES AND AIR HANDLER FANS SHALL BE DELETED FROM THIS PROJECT UNDER BID ITEM 3. TAB OF VAV BOXES SHALL REMAIN IN THE PROJECT EVEN IF BID ITEM 3 IS TAKEN.

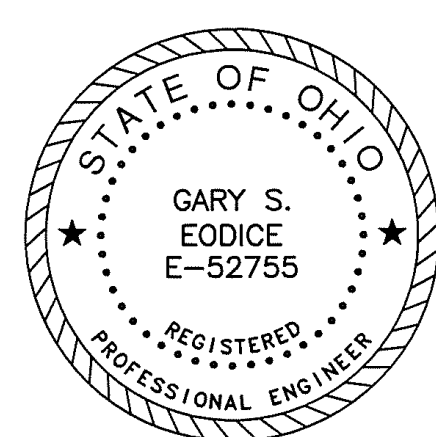
NOTES

1. EXISTING DUCTWORK TO REMAIN.
2. EXISTING RECESSED STEAM CONVECTOR TO REMAIN. RAISE EXISTING STEAM HEATING ELEMENT INSIDE CONVECTOR CABINET AND REPLACE SELF CONTAINED STEAM CONTROL VALVE WITH NEW DDC CONTROL VALVE. REFER TO DETAIL ON SHEET M602. STEAM CONTROL VALVE SHALL BE CONTROLLED BY INDICATED VAN BOX DDC CONTROLLER.
3. EXISTING AIR VALVE DEVICE TO REMAIN. BALANCE TO INDICATED CFM.
4. EXISTING PIPING TO REMAIN.
5. APPROXIMATE LOCATION OF TEMPORARY PLASTIC DUST BARRIER FOR REMOVAL AND REPLACEMENT OF EQUIPMENT INSIDE THIS AREA.
6. PROVIDE NEW WALL HUNG STEAM CONVECTOR. REFER TO SCHEDULE ON SHEET M601 AND DETAIL ON SHEET M602. STEAM CONTROL VALVE SHALL BE CONTROLLED BY INDICATED VAN BOX DDC CONTROLLER.
7. NEW PIPING RUNNINGS TO AIR TERMINAL UNIT AND ASSOCIATED SPECIALTIES TAKEN IN PROJECT EVEN IF BID ITEM 2 IS TAKEN.
8. EXISTING EXHAUST AIR DEVICE TO REMAIN.
9. EXISTING RECESSED STEAM CONVECTOR TO REMAIN. PROVIDE NEW SELF CONTAINED NON-ELECTRIC STEAM CONTROL VALVE WITH REMOTE SENSING ELEMENT MOUNTED BELOW EXISTING STEAM HEATING ELEMENT TO REPLACE CONTROL VALVE. REFER TO DETAIL ON SHEET M602.
10. SUPPLY DIFFUSER IN PLenum ABOVE CEILING TO REMAIN. CLEAN DEVICE AND INSTALL EXISTING CEILING SUPPORTED FROM EXISTING CEILING GRID. BALANCE DEVICE TO INDICATED CFM.
11. UTILIZE EXISTING SPARE 120V-20A IP BREAKER IN EXISTING PANEL "C8C" FOR NEW WORK.
12. PROVIDE DDC NETWORK AREA CONTROLLER, FULLY INTEGRATE ALL NEW DDC TERMINAL UNIT CONTROLLERS TO EXISTING HEAD END THROUGH THIS PANEL. PROVIDE GRAPHICS AS SPECIFIED.
13. EXISTING VARIABLE AIR VOLUME AIR HANDLING UNIT TO REMAIN.
14. EXISTING SUPPLY FAN INSIDE AIR HANDLING UNIT 1-AHJ1 TO REMAIN. REBALANCE SUPPLY FAN TO 8500 CFM.
15. EXISTING SUPPLY FAN INSIDE AIR HANDLING UNIT 1-AHJ2 TO REMAIN. REBALANCE SUPPLY FAN TO 8500 CFM.
16. EXISTING RETURN FAN INSIDE AIR HANDLING UNIT 1-AHJ1 TO REMAIN. REBALANCE RETURN FAN TO 8360 CFM.
17. EXISTING RETURN FAN INSIDE AIR HANDLING UNIT 1-AHJ2 TO REMAIN. REBALANCE RETURN FAN TO 7790 CFM.
18. PROVIDE ISOLATION BUTTERFLY VALVES IN EXISTING PIPING.
19. PROVIDE 1.25" BYPASS WITH MANUAL VALVE BALANCE VALVE. BALANCE TO 10 GPM FOR TEMPORARY BYPASS DURING 8TH FLOOR SHUTDOWN. CLOSE BYPASS VALVE AT COMPLETION OF CONSTRUCTION. HAVE PROJECT ENGINEER LOCKOUT/TAGOUT WHEN VALVE IS TO BE CLOSED.



1	Amendment 1	07-24-2014
Revisions		Date

CONSULTANTS:



ARCHITECT/ENGINEERS:



Drawing Title

EIGHTH FLOOR PLAN - NEW WORK

Approved: Project Director

Project Title

REPLACE PNEUMATIC BOXES
ON 8TH FLOOR

Location

Cincinnati, Ohio

Date	05/22/2014
------	------------

Checked	JAC
---------	-----

Drawn
DBV

Project No.	539-15-203
-------------	------------

Building Number
1

Drawing Number
ML110

Page 5 of 8

Office of
Construction
and Facilities
Management

