



# Sign #1



Side A



Side B

36" x 48" Post and Panels  
Repaint Faces  
Apply New Reflective Lettering

---

# Sign #2



Side A



Side B

48" x 72" Post and Panels  
Repaint faces  
Apply New Reflective Lettering

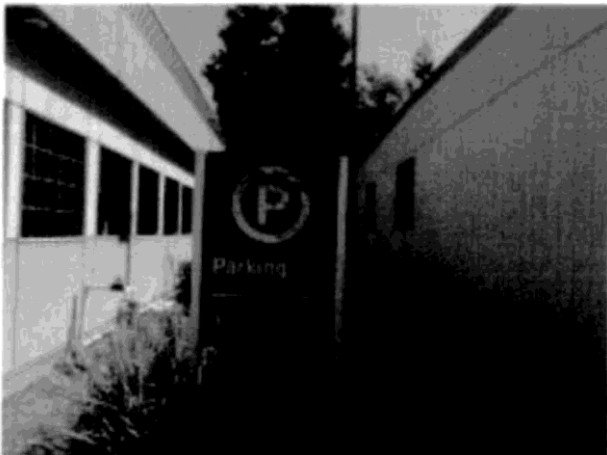
## Sign #3



36" x 36" Aluminum Pan  
Repaint Face  
Apply New Reflective  
Lettering

---

## Sign #4



Side A



Side B

36" x 24" Post and Panels  
Repaint Faces  
Apply New Reflective Lettering

## Sign #5



Side A



Side B

18" x 24" Post and Panels  
Repaint faces  
Apply new Reflective Lettering

---

## Sign #6



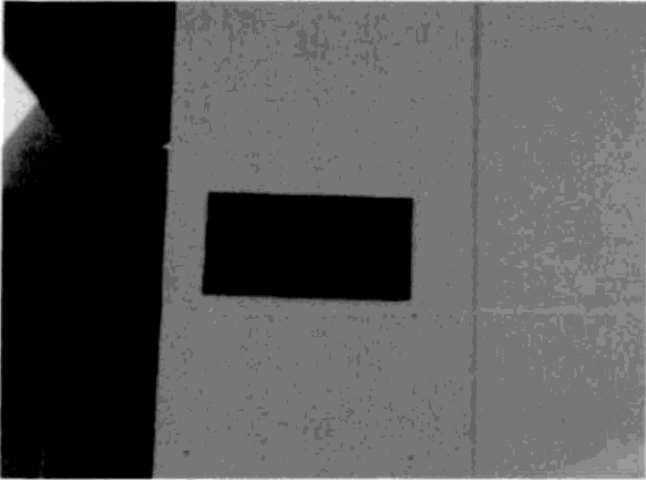
Side A



Side B

48" x 72" Post and Panels  
Repaint Faces  
Apply New Reflective Lettering

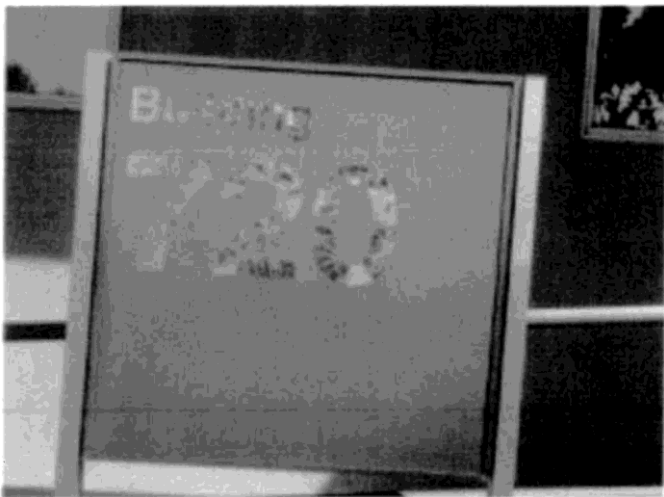
## Sign #7



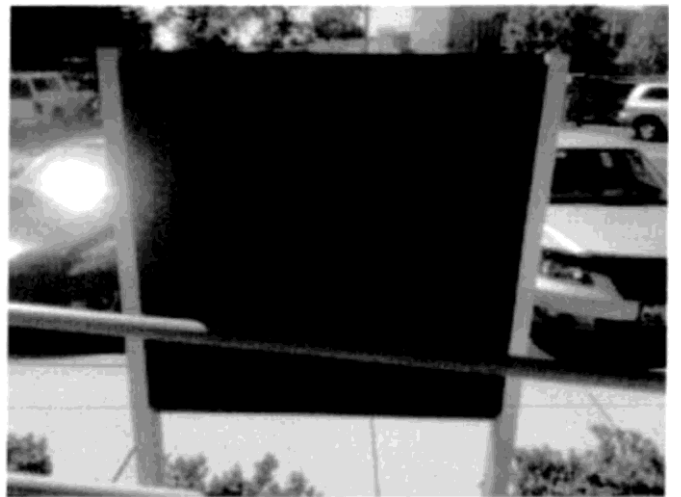
8" x 16"  
Aluminum  
Repaint Face  
Apply New Reflective  
Lettering

---

## Sign #8



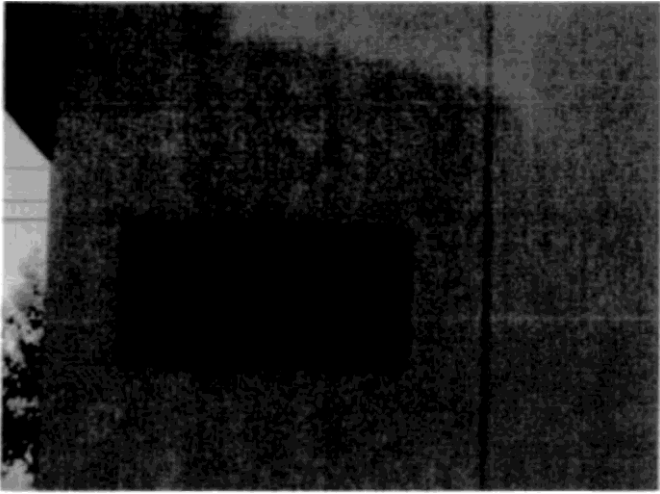
Side A



Side B

36" x 36" Post and Panels  
Repaint faces

## Sign #9



8" x 16" Aluminum  
Repaint face  
Apply New Reflective Lettering

---

## Sign #10



Side A



Side B

36" x 36" Post and Panels  
Repaint Faces  
Apply New Reflective  
Lettering

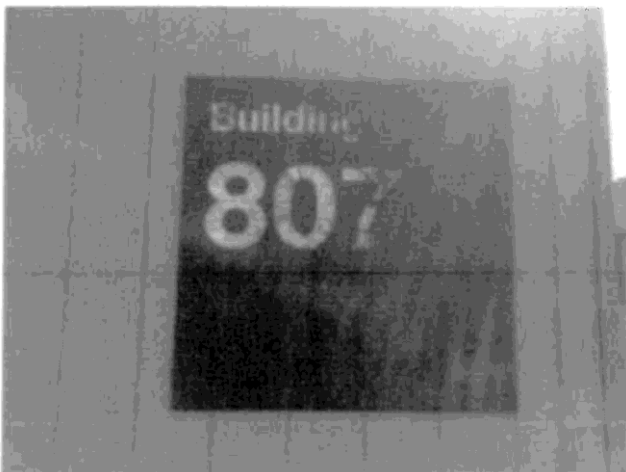
## Sign #1 1



36" x 36" Post and Panels  
Repaint Faces  
Apply New Reflective Lettering

---

## Sign #1 2



36" x 36" Aluminum Pan  
Repaint Face  
Apply New Reflective Lettering

## Sign # 13



24" x 24" Stop Sign  
Reflective

---

## Sign # 14



Side A



Side B

36" x 48" Post and Panels  
Repaint faces  
Apply new Reflective  
Lettering



## Sign # 15



Side A

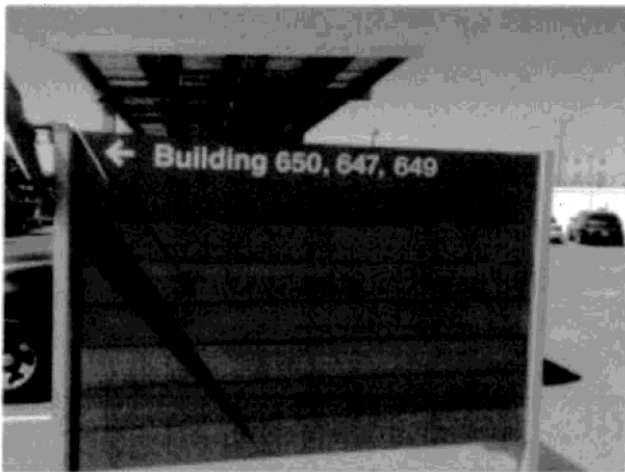


Side B

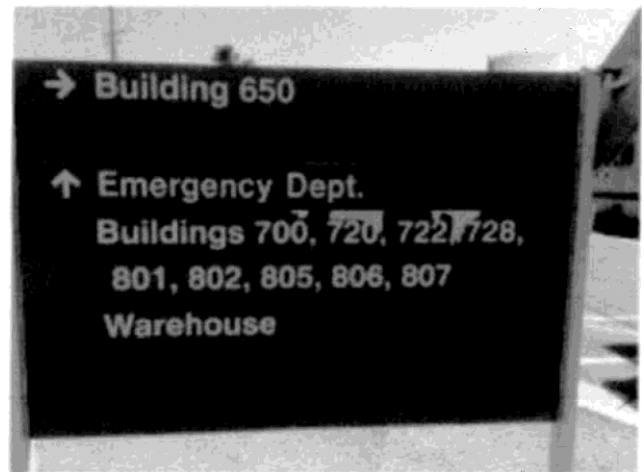
36" x 48" Post and Panels  
Repaint Faces  
Apply New Reflective Lettering

---

## Sign # 16



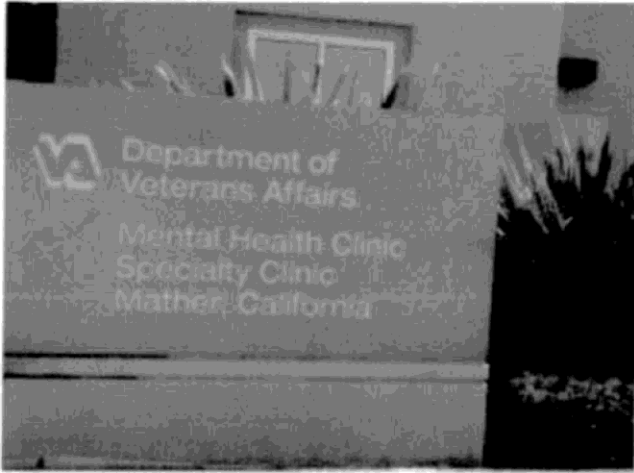
Side A



Side B

48" x 72" Post and Panels  
Repaint Faces  
Apply New Reflective Lettering

## Sign #17



48" x 96" Monument  
Router Cut Aluminum Faces  
with White Acrylic Backing  
Repaint / Refinish Face

---

## Sign #18



18" x 24" Post and Panels  
Repaint Faces  
Apply new Reflective  
Lettering

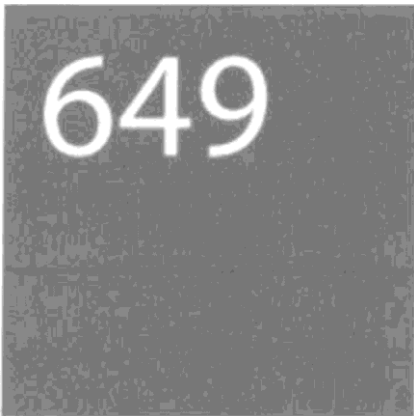
## Sign # 19



18' x 24" Post and Panels  
Repaint Faces  
Apply New Reflective  
Lettering

---

## Sign #20



36" x 36" Aluminum Pan  
New Sign Painted Vets  
Teal/Green  
Reflective Lettering

## Sign #21



Existing Numbers to Match



Apply New Numbers on Glass

6" Vinyl Numbers

---

## Sign #22



Side A



Side B

48" x 72" Post and Panels  
Repaint Faces  
Apply New Reflective Lettering

## Sign #23



Side A



Side B

48" x 72" Post and Panels  
Repaint Faces  
Apply New Reflective Lettering

---

## Sign #24



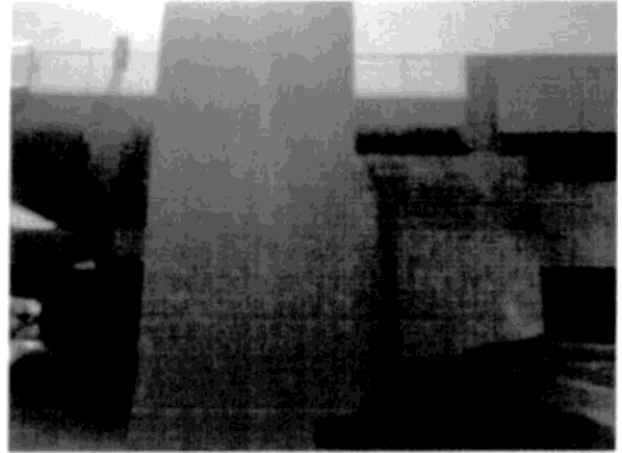
Side A



Side B

36" x 24" Post and Panels  
Repaint Faces  
Apply New Reflective Lettering

## Sign #25



Install location

36" x 63" Aluminum Pan  
New Sign Painted Vets  
Teal/Green Reflective Lettering

---

## Sign #26



Install location

36" x 36" Aluminum Pan  
New Sign Painted Vets  
Teal/Green Reflective Lettering

## Sign #27



Install location

36" x 36" Aluminum Pan  
New Sign Painted Vets  
Teal/Green Reflective  
Lettering

---

## Sign #28



Quantity of 3 New  
36" x 48" Post and Panels  
New Sign Painted Vets Brown  
Inkjet Printed Maps w/  
Lamination

## Sign #29



12" x 18" Aluminum  
Refinish Paint Vets Teal/Green and  
White

---

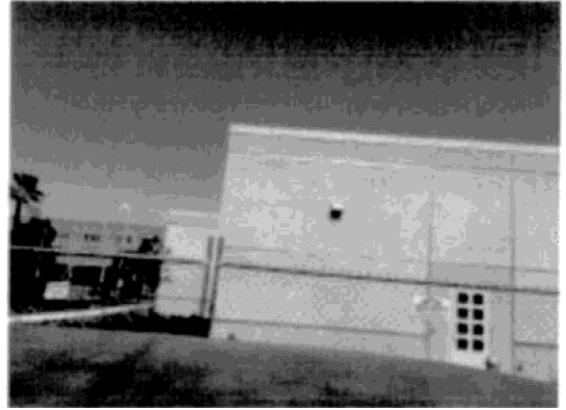
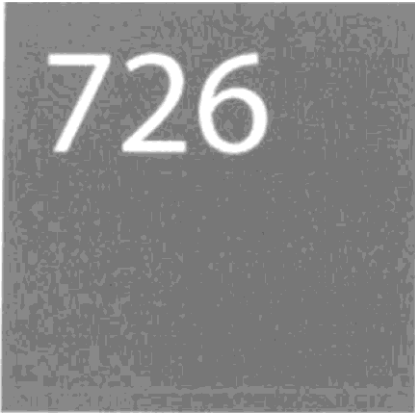
## Sign #30



30" x 24" Aluminum  
New Sign Painted Vets  
Teal/Green  
Reflective Lettering  
Quantity of 3



## Sign #31

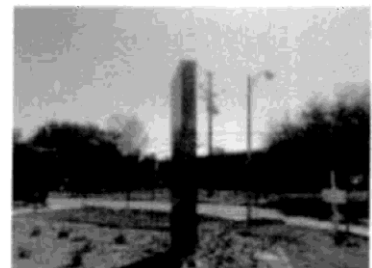


Install location

36" x 36" Aluminum Pan  
New Sign Painted Vets  
Teal/Green  
Reflective Lettering

---

## Sign #32



12' x 5' Aluminum  
Monument Router cut out  
letters/logos Painted vets  
teal/green  
White acrylic backing

## Sign #33



Side A



Side B

48" x 96" Post and  
Panels Repaint faces  
Router Cut Out Letters w/White Acrylic Backing

---

## Sign #34



Side A



Side B

48" x 72" Post and Panels  
Repaint faces  
Router Cut Out Letters w/ White Acrylic Backing

## Sign #35



36" x 36" Aluminum Pan Repaint face  
White Reflective Lettering