

1 PARTIAL GROUND FLOOR PLAN
1/4" = 1'-0"

FULLY SPRINKLERED

ALTERNATE No. 4	07/01/14
ALTERNATE No. 2 and ALTERNATE No. 3	06/19/14
CONSTRUCTION DOCUMENT - 100% SUBMISSION	07/19/13
CONSTRUCTION DOCUMENT - 90% SUBMISSION	04/05/13
FIRE/LIFE SAFETY REVIEW	03/15/13
DESIGN DEVELOPMENT - 60% SUBMISSION (3RD)	11/09/12
DESIGN DEVELOPMENT - 60% SUBMISSION (2ND)	10/05/12
DESIGN DEVELOPMENT - 60% SUBMISSION (1ST)	08/22/12
SCHEMATIC DESIGN - 30% SUBMISSION	09/09/11
Revisions	Date

VA WESTERN NEW YORK HEALTHCARE SYSTEM
222 RICHMOND AVE
BATAVIA, NEW YORK 14020

CANNONDESIGN
2170 Whitehaven Road, Grand Island, New York 14072
T: 716.773.8800 F: 716.773.5909

Boston ■ New York ■ Baltimore ■ Washington DC ■ Buffalo
Toronto ■ Chicago ■ St. Louis ■ Calgary ■ Vancouver
Victoria ■ San Francisco ■ Los Angeles ■ Shanghai

Architect CANNON PROJECT #: 3526.00

stamp

CARDIOLOGY MANAGER	DATE	ENGINEERING MANAGER	DATE
INFECTION CONTROL	DATE	CARELINE MANAGER	DATE
SAFETY OFFICER	DATE	CHIEF OF STAFF	DATE

Drawing Title	
SITE PLAN	
MEDICAL CENTER DIRECTOR	DATE
ASSOCIATE MEDICAL CENTER DIRECTOR	DATE

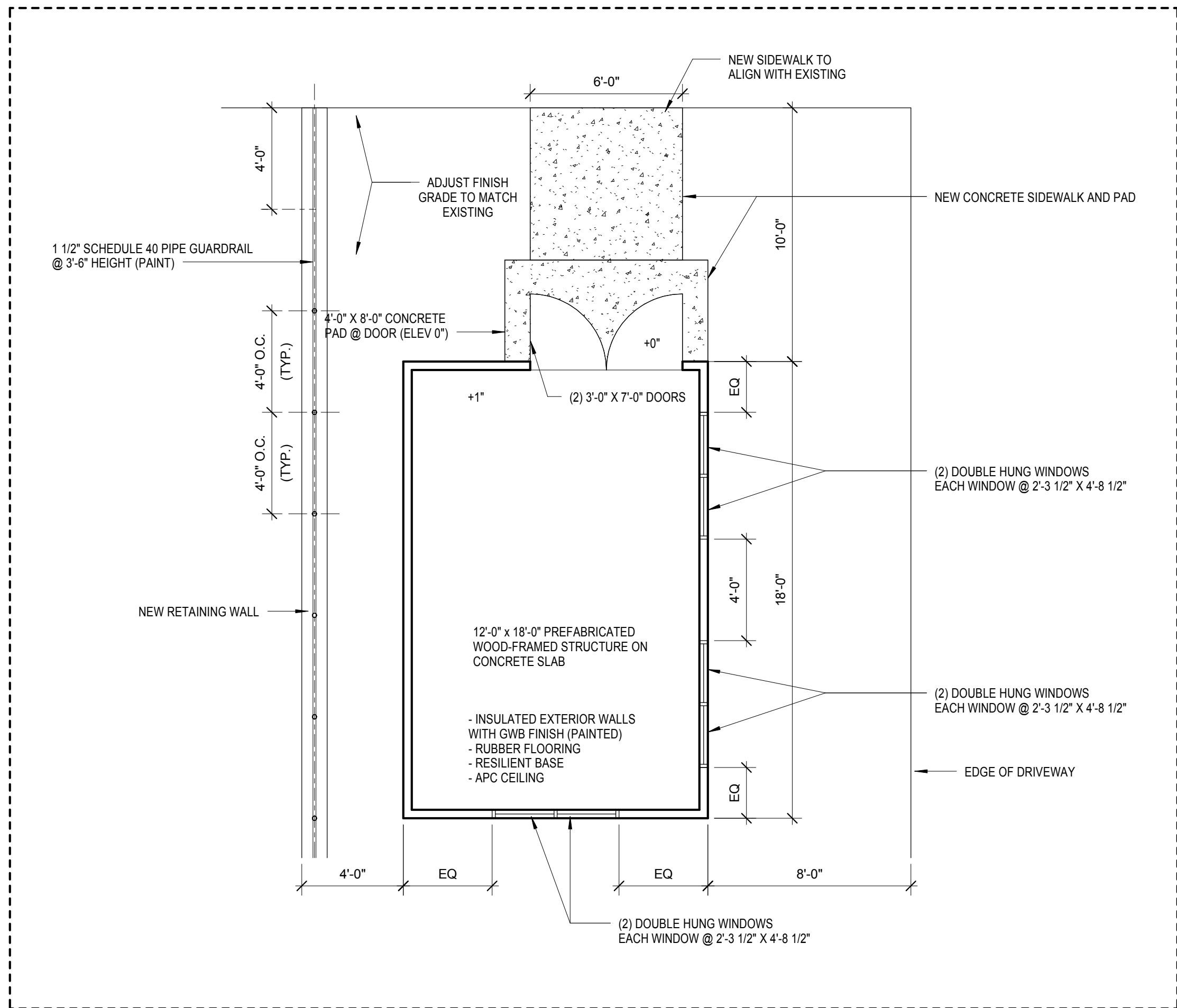
Project Title		
WARD C RENOVATIONS		
Building Number	Checked	Drawn
1	TV	SMP
Location		
V.A.M.C. BATAVIA, NEW YORK		

Date	09/09/11
Station No.	5284
353	CS101



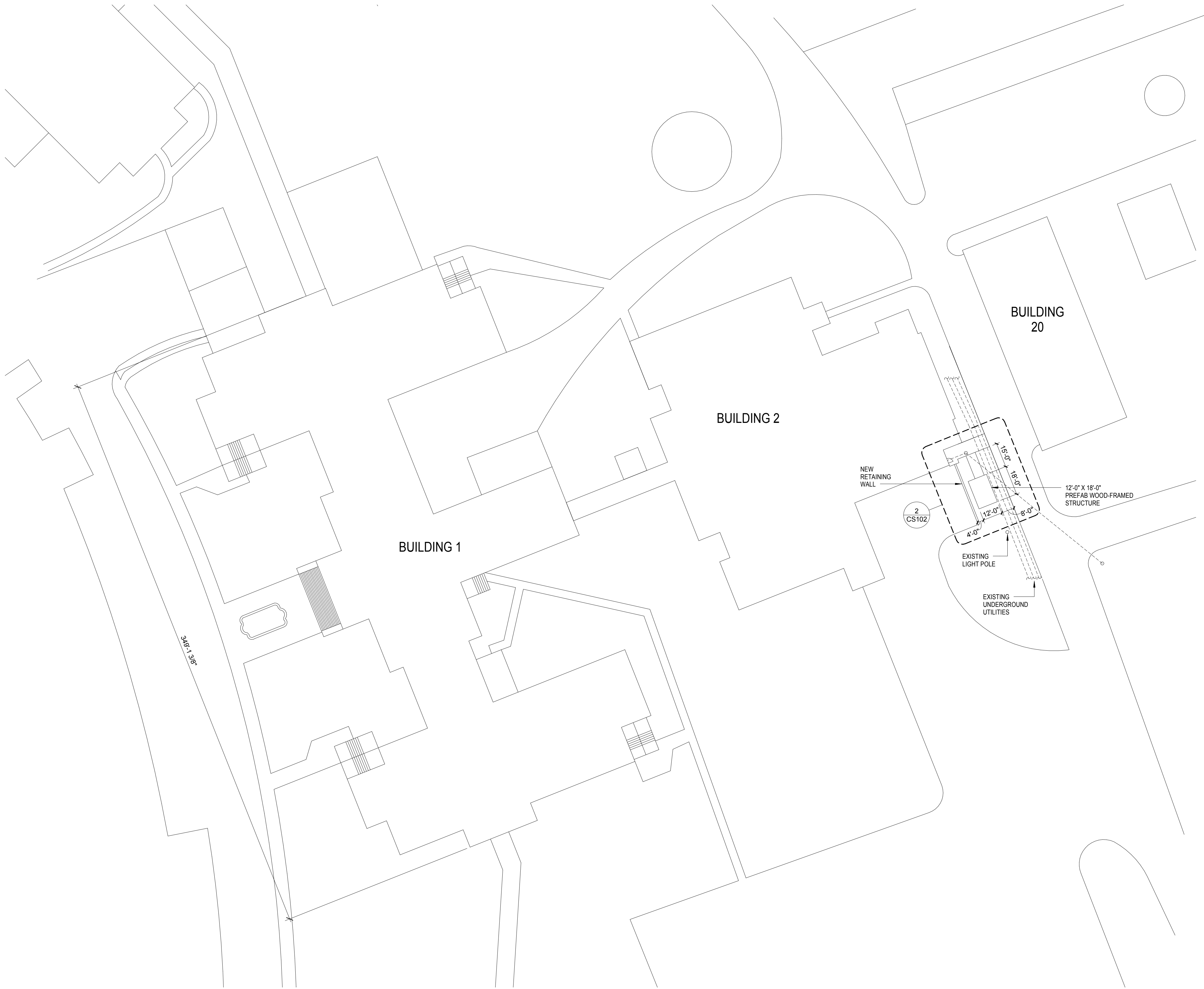
three inches = one foot
one and one-half inch = one foot
one inch = one foot
three-quarters inch = one foot
one-half inch = one foot
three-eighths inch = one foot
one-quarter inch = one foot
one-eighth inch = one foot

A
B
C
D
E
F



ALTERNATE No. 2

2 SMOKE SHED
1/4" = 1'-0"



1 SITE PLAN
1/32" = 1'-0"

FULLY SPRINKLERED

ALTERNATE No. 4	07/01/14
ALTERNATE No. 2 and ALTERNATE No. 3	08/19/14
CONSTRUCTION DOCUMENT - 100% SUBMISSION	07/19/13
CONSTRUCTION DOCUMENT - 90% SUBMISSION	04/05/13
FIRE/LIFE SAFETY REVIEW	03/15/13
DESIGN DEVELOPMENT - 60% SUBMISSION (3RD)	11/09/12
DESIGN DEVELOPMENT - 60% SUBMISSION (2ND)	10/05/12
DESIGN DEVELOPMENT - 60% SUBMISSION (1ST)	08/22/12
SCHEMATIC DESIGN - 30% SUBMISSION	09/09/11
Revisions	Date

VA WESTERN NEW YORK HEALTHCARE SYSTEM
222 RICHMOND AVE
BATAVIA, NEW YORK 14020

CANNONDESIGN

2170 Whitehaven Road, Grand Island, New York 14072
T: 716.773.6800 F: 716.773.5909

Boston ■ New York ■ Baltimore ■ Washington DC ■ Buffalo
Toronto ■ Chicago ■ St. Louis ■ Calgary ■ Vancouver
Victoria ■ San Francisco ■ Los Angeles ■ Shanghai

CANNON PROJECT #: 3526.00

Architect

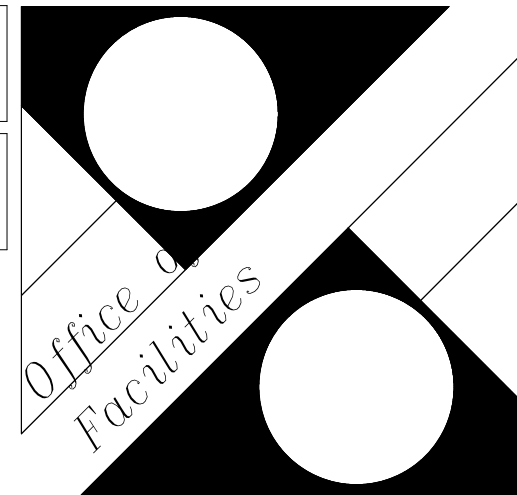
stamp

CARDIOLOGY MANAGER	DATE	ENGINEERING MANAGER	DATE
INFECTION CONTROL	DATE	CARELINE MANAGER	DATE
SAFETY OFFICER	DATE	CHIEF OF STAFF	DATE

Drawing Title	SITE PLAN
MEDICAL CENTER DIRECTOR	DATE
ASSOCIATE MEDICAL CENTER DIRECTOR	DATE

Project Title	WARD C RENOVATIONS
Building Number	1
Location	V.A.M.C. BATAVIA, NEW YORK

Date	09/09/11
Station No.	5284
353	CS102



Department of
Veterans Affairs