

ALTERNATE No. 4	07/01/14
ALTERNATE No. 2 and ALTERNATE No. 3	06/19/14
CONSTRUCTION DOCUMENT - 100% SUBMISSION	07/19/13
CONSTRUCTION DOCUMENT - 90% SUBMISSION	04/05/13
FIRE/LIFE SAFETY REVIEW	03/15/13
DESIGN DEVELOPMENT - 60% SUBMISSION (3RD)	11/09/12
DESIGN DEVELOPMENT - 60% SUBMISSION (2ND)	10/05/12
DESIGN DEVELOPMENT - 60% SUBMISSION (1ST)	08/22/12
SCHEMATIC DESIGN - 30% SUBMISSION	09/09/11
Revisions	Date

VA WESTERN NEW YORK HEALTHCARE SYSTEM
222 RICHMOND AVE
BATAVIA, NEW YORK 14020

CANNONDESIGN

2170 Whitehaven Road, Grand Island, New York 14072
T: 716.773.8800 F: 716.773.5909

Boston ■ New York ■ Baltimore ■ Washington DC ■ Buffalo
Toronto ■ Chicago ■ St. Louis ■ Calgary ■ Vancouver
Victoria ■ San Francisco ■ Los Angeles ■ Shanghai

Architect
CANNON PROJECT #: 3526.00

stamp

CARDIOLOGY MANAGER

DATE

ENGINEERING MANAGER

DATE

INFECTION CONTROL

DATE

CARELINE MANAGER

DATE

SAFETY OFFICER

DATE

CHIEF OF STAFF

DATE

Drawing Title

FIRST, SECOND AND THIRD FLOOR
FIRE PROTECTION PLANS

MEDICAL CENTER DIRECTOR

DATE

ASSOCIATE MEDICAL CENTER DIRECTOR

DATE

Project Title

WARD C RENOVATIONS

Building Number

Checked

JKB

Drawn

DKM

Location

V.A.M.C. BATAVIA, NEW YORK

Date

09/09/11

Station No.

5284

353

F101

FULLY SPRINKLERED



Department of
Veterans Affairs

7 ABBREVIATIONS

EX	EXISTING
FDV	FIRE DEPARTMENT VALVE
FP	FIRE PROTECTION
GMP	GALLONS PER MINUTE
PSI	POUNDS PER SQUARE INCH
SQ/FT	SQUARE FOOT

6 SYMBOLS

FP	FIRE PROTECTION PIPING (FP)
EX. FP	FIRE PROTECTION PIPING (FP) EXISTING
---	FIRE PROTECTION PIPING (FP) DEMO
(X)	KEYED NOTE TAG
(V)	VALVE
(FS)	FLOW SWITCH
(U)	UPRIGHT SPRINKLER HEAD
(R)	SEMI RECESSED SPRINKLER HEAD
(H)	HYDRAULIC NODE

5 GENERAL NOTES

- FIRE PROTECTION CONTRACTOR SHALL COORDINATE LOCATION OF ALL SPRINKLER HEADS AND PIPING WITH STRUCTURAL ELEMENTS, MECHANICAL, PLUMBING, ELECTRICAL EQUIPMENT AND CEILING CONFIGURATION INDICATED ON DRAWINGS. WHERE NECESSARY SPRINKLER CONTRACTOR SHALL PROVIDE ADDITIONAL SPRINKLERS TO ASSURE REQUIRED DISCHARGE PATTERNS AROUND OBSTRUCTIONS AND DIFFERENT CEILING ELEVATIONS TO YIELD A PROPER DENSITY (gpm/sq. ft.) FOR THE DESIGNED HAZARD.
- ALL PIPING, FITTINGS AND JOINTS IN SPRINKLER AND STANDPIPE SYSTEMS SHALL CONFORM TO NFPA 13 & 14, NON-METALLIC PIPE AND FITTINGS ARE UNACCEPTABLE.
- ALL VALVES WILL BE READILY ACCESSIBLE FROM A SAFE HEIGHT ON A SIX FOOT LADDER AND TO BE CLEAR OF ALL OBSTRUCTIONS AND THEIR OPERATION SHALL NOT TO BE ENCUMBERED BY ANY DEVICE OR EQUIPMENT.
- SPRINKLER PIPING IS TO BE BRACED AND RESTRAINED (BRANCH LINES) IN ACCORDANCE WITH NFPA 13 FOR SEISMIC REQUIREMENTS.
- THE ENTIRE RENOVATED AREA SHALL BE COMPLETELY SPRINKLERED WITH A WET PIPE SPRINKLER SYSTEM IN ACCORDANCE WITH NFPA 13.
- SPRINKLER SYSTEM SHALL BE ZONED AS SHOWN ON DRAWINGS.
- REFER TO ARCHITECTURAL REFLECTED CEILING PLANS FOR SPRINKLER HEAD LOCATIONS.
- THESE DRAWINGS ARE DIAGNOSTIC IN NATURE AND MAY NOT SHOW EXACT ROUTING OR ALL REQUIRED OFFSETS, ACCESSORIES, OR APPURTENANCES. CONTRACTOR SHALL PROVIDE AS REQUIRED TO INSTALL A COMPLETE AND COORDINATED JOB, INCLUDING ANY ADDITIONAL ITEMS REQUIRED TO MEET ACTUAL FIELD CONDITIONS AND EQUIPMENT SELECTED.
- DEMOLITION INFORMATION SHOWN ON THE DRAWINGS IS BASED ON SHOP DRAWINGS AND A PRELIMINARY REVIEW OF THE EXISTING CONDITIONS. PERFORM ALL WORK OF A DEMOLITION NATURE THAT MAY BE REQUIRED OR NECESSARY FOR A FULL AND COMPLETE EXECUTION OF THE WORK, WHETHER OR NOT SHOWN OR SPECIFIED. THE EXACT EXTENT OF DEMOLITION MAY NOT BE FULLY INDICATED ON THE DRAWINGS. CONTRACTOR TO FIELD VERIFY EXISTING CONDITIONS PRIOR TO BIDS AND CONFIRM COMPLETE EXTENT OF DEMOLITION REQUIRED.
- MATERIALS AND EQUIPMENT TO BE SALVAGED OR REUSED SHALL BE IDENTIFIED BY THE OWNER. THESE ITEMS ARE THE PROPERTY OF THE OWNER AND SHALL BE RETURNED TO THE OWNERS DESIGNATED STORAGE AREA WHERE REMOVAL IS REQUIRED THE CONTRACTOR SHALL BE RESPONSIBLE FOR CARE TAKEN DURING THE HANDLING OF THESE ITEMS.
- DEMOLISHED MATERIALS AND EQUIPMENT NOT BEING SALVAGED OR REUSED SHALL BECOME THE PROPERTY OF THE CONTRACTOR AND REMOVED FROM THE SITE AND LEGALLY DISPOSED OF.

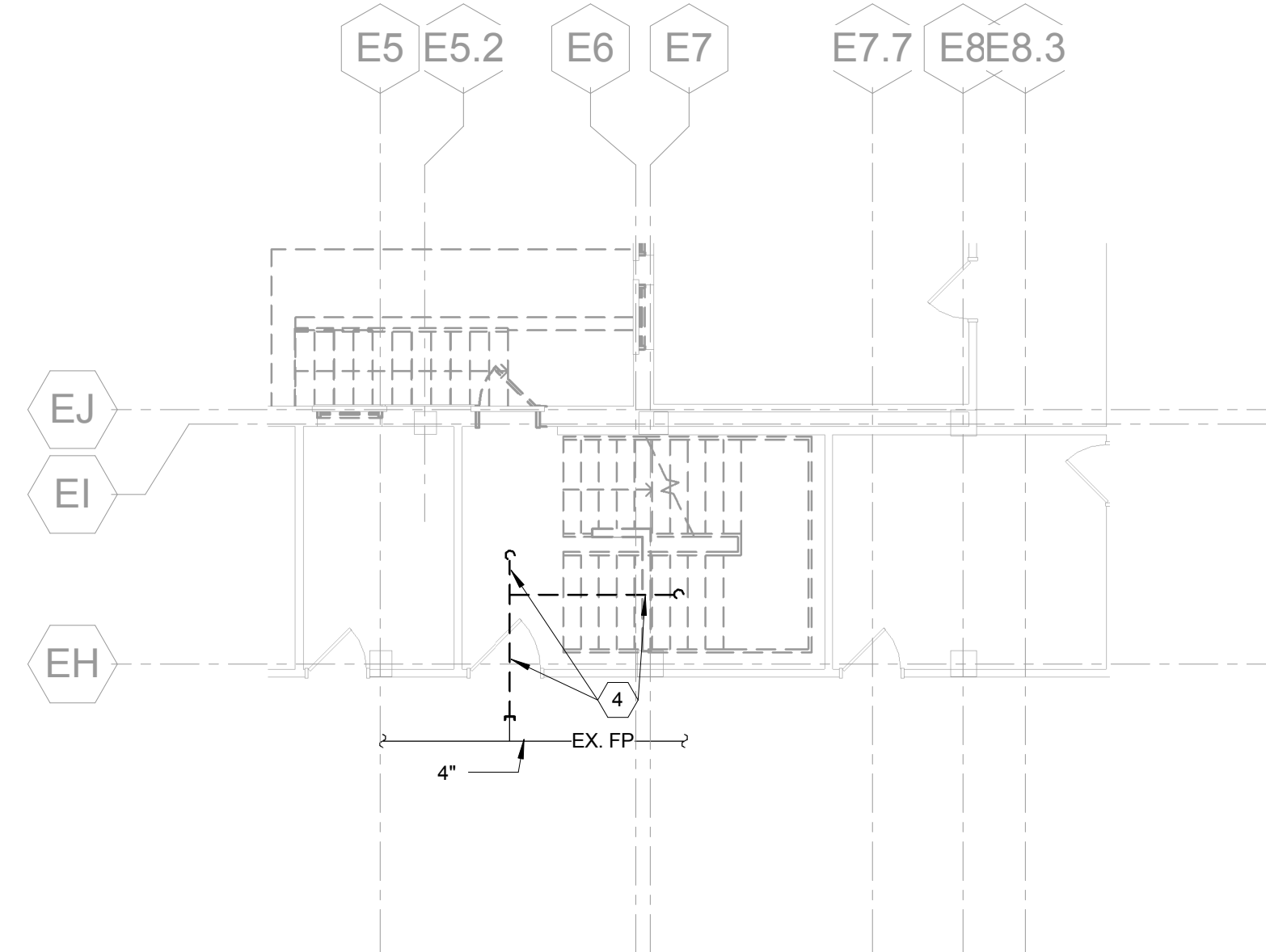
4 NOTES:

- CONNECT NEW FP TO EXISTING.

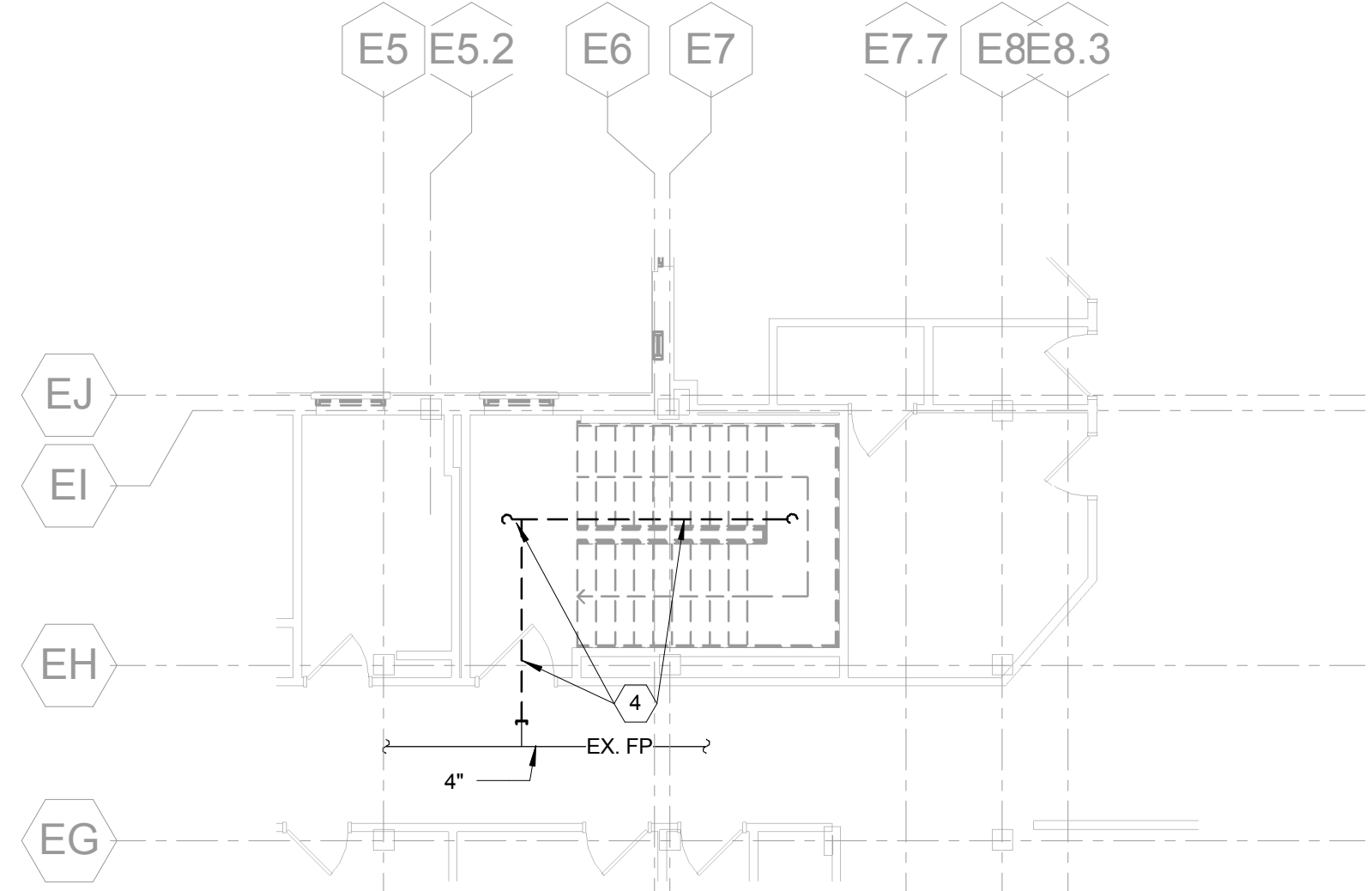
3 PARTIAL FIRST FLOOR FIRE PROTECTION PLAN
SCALE: 1/8" = 1'-0"

2 PARTIAL THIRD FLOOR FIRE PROTECTION PLAN
SCALE: 1/8" = 1'-0"

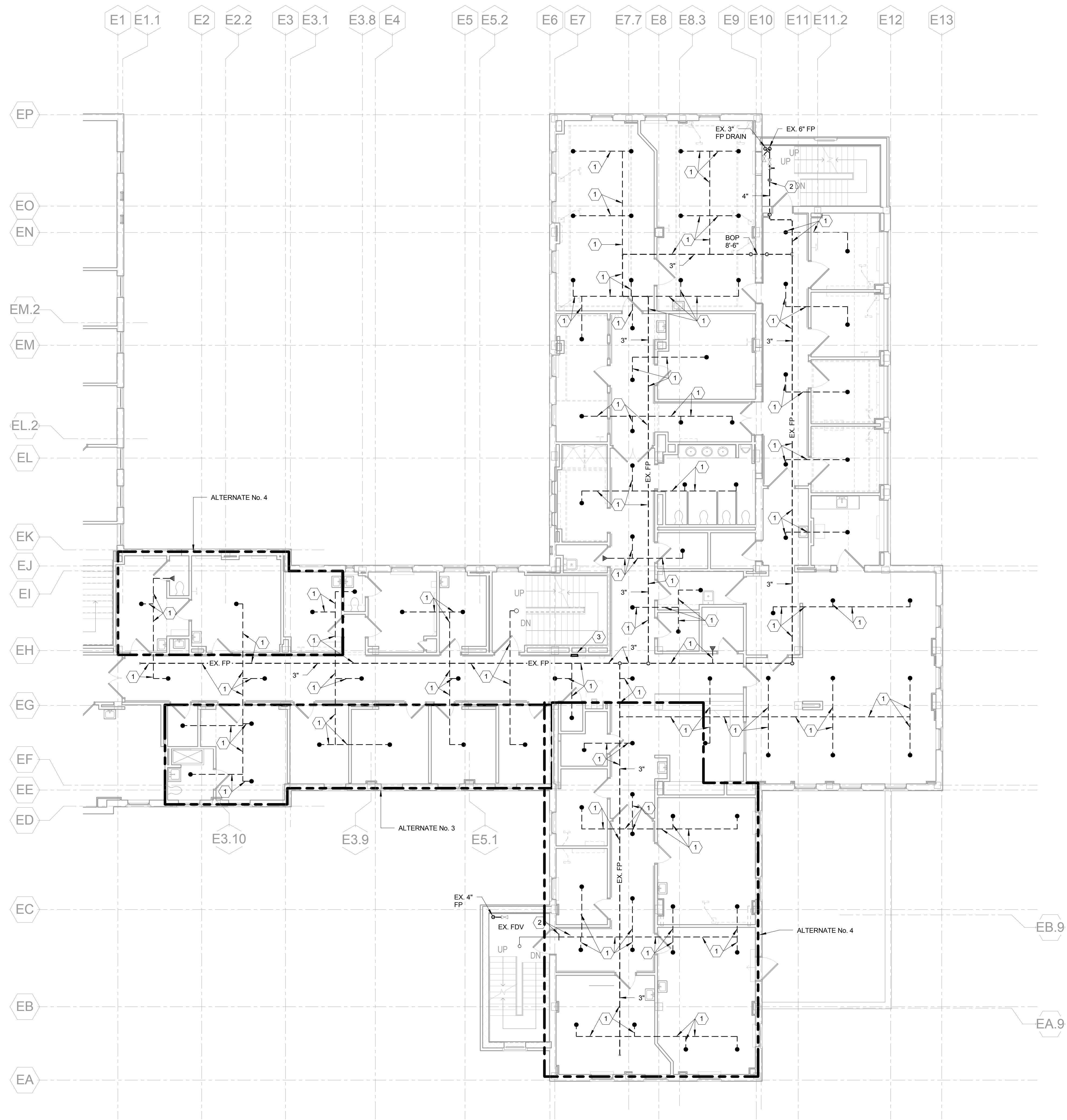
1 SECOND FLOOR FIRE PROTECTION PLAN
SCALE: 1/8" = 1'-0"



3 PARTIAL FIRST FLOOR FIRE PROTECTION DEMOLITION
SCALE: 1/8" = 1'-0"



2 PARTIAL THIRD FLOOR FIRE PROTECTION DEMOLITION
SCALE: 1/8" = 1'-0"



1 SECOND FLOOR FIRE PROTECTION DEMOLITION
SCALE: 1/8" = 1'-0"

- 4 NOTES:
1. DISCONNECT AND REMOVE EXISTING SPRINKLERS AND ASSOCIATED FIRE PROTECTION PIPING IN ITS ENTIRETY.
 2. REMOVE EXISTING FIRE PROTECTION PIPING BACK TO POINT INDICATED AND PREPARE PIPING FOR NEW CONNECTION.
 3. DISCONNECT AND REMOVE EX. FDV AND ALL ASSOCIATED FP PIPING.
 4. DISCONNECT AND REMOVE EXISTING SPRINKLER HEADS AND ASSOCIATED FIRE PROTECTION PIPING BACK TO POINT INDICATED AND CAP.

ALTERNATE No. 4	07/01/14
ALTERNATE No. 2 and ALTERNATE No. 3	06/19/14
CONSTRUCTION DOCUMENT - 100% SUBMISSION	07/19/13
CONSTRUCTION DOCUMENT - 90% SUBMISSION	04/05/13
FIRE/LIFE SAFETY REVIEW	03/15/13
DESIGN DEVELOPMENT - 60% SUBMISSION (3RD)	11/09/12
DESIGN DEVELOPMENT - 60% SUBMISSION (2ND)	10/05/12
DESIGN DEVELOPMENT - 60% SUBMISSION (1ST)	08/22/12
SCHEMATIC DESIGN - 30% SUBMISSION	09/09/11
Revisions	Date

VA WESTERN NEW YORK HEALTHCARE SYSTEM
222 RICHMOND AVE
BATAVIA, NEW YORK 14020

CANNONDESIGN
2170 Whitehaven Road, Grand Island, New York 14072
T: 716.773.6800 F: 716.773.5909

Boston • New York • Baltimore • Washington DC • Buffalo
Toronto • Chicago • St. Louis • Calgary • Vancouver
Victoria • San Francisco • Los Angeles • Shanghai

Architect
CANNON PROJECT #: 3526.00

stamp

CARDIOLOGY MANAGER

DATE

ENGINEERING MANAGER

DATE

INFECTION CONTROL

DATE

CARELINE MANAGER

DATE

SAFETY OFFICER

DATE

CHIEF OF STAFF

DATE

Drawing Title
**FIRST, SECOND AND THIRD FLOOR
FIRE PROTECTION DEMOLITION**

MEDICAL CENTER DIRECTOR

DATE

ASSOCIATE MEDICAL CENTER DIRECTOR

DATE

Project Title
WARD C RENOVATIONS

Building Number

1

Checked

JKB

Drawn

DKM

Location
V.A.M.C. BATAVIA, NEW YORK

Date
09/09/11

Station No.
5284

353

FD101

FULLY SPRINKLERED



Department of
Veterans Affairs