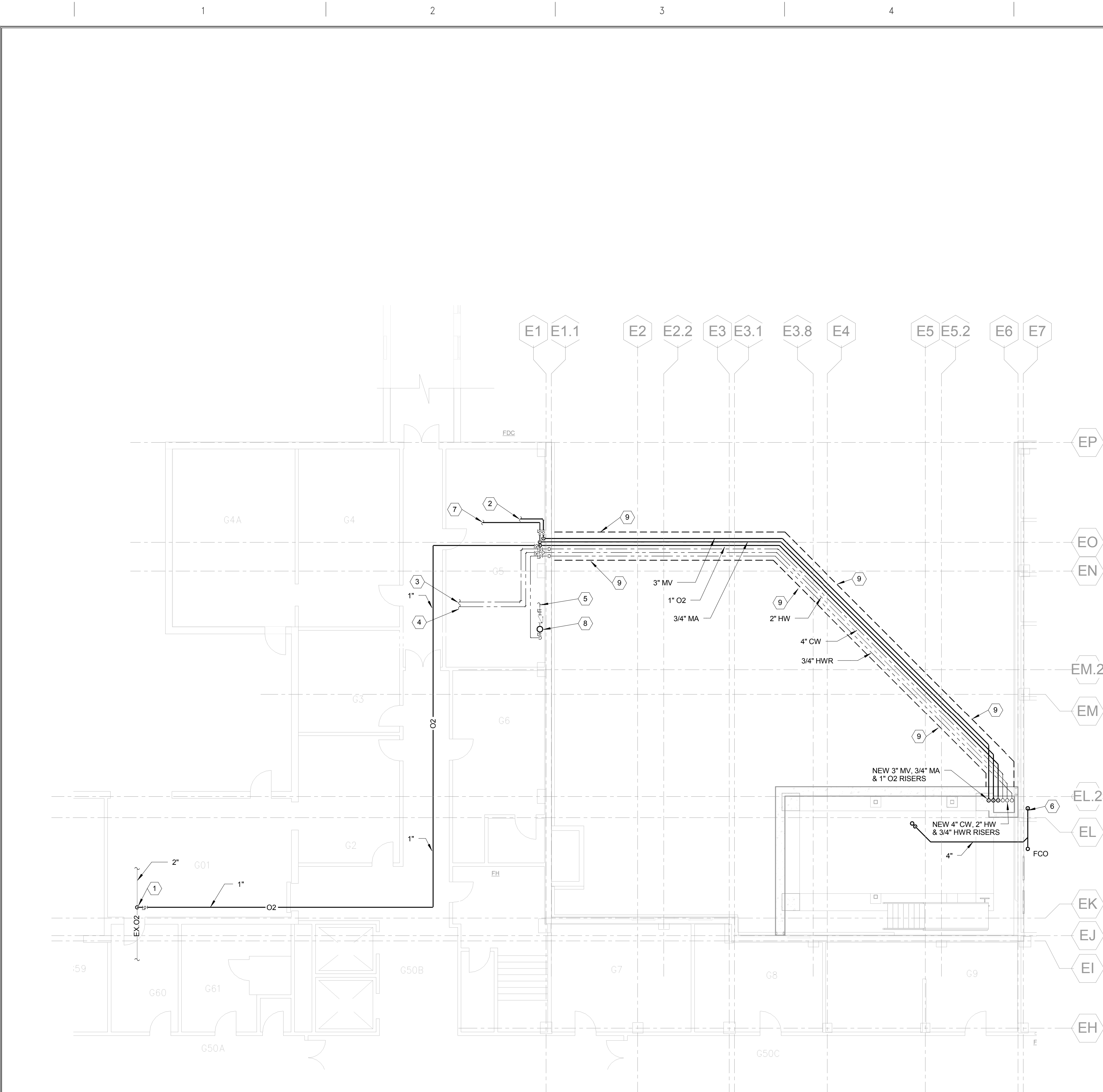


three-eighths inch = one foot  
one-half inch = one foot  
three-quarters inch = one foot  
one-quarter inch = one foot  
one-eighth inch = one foot

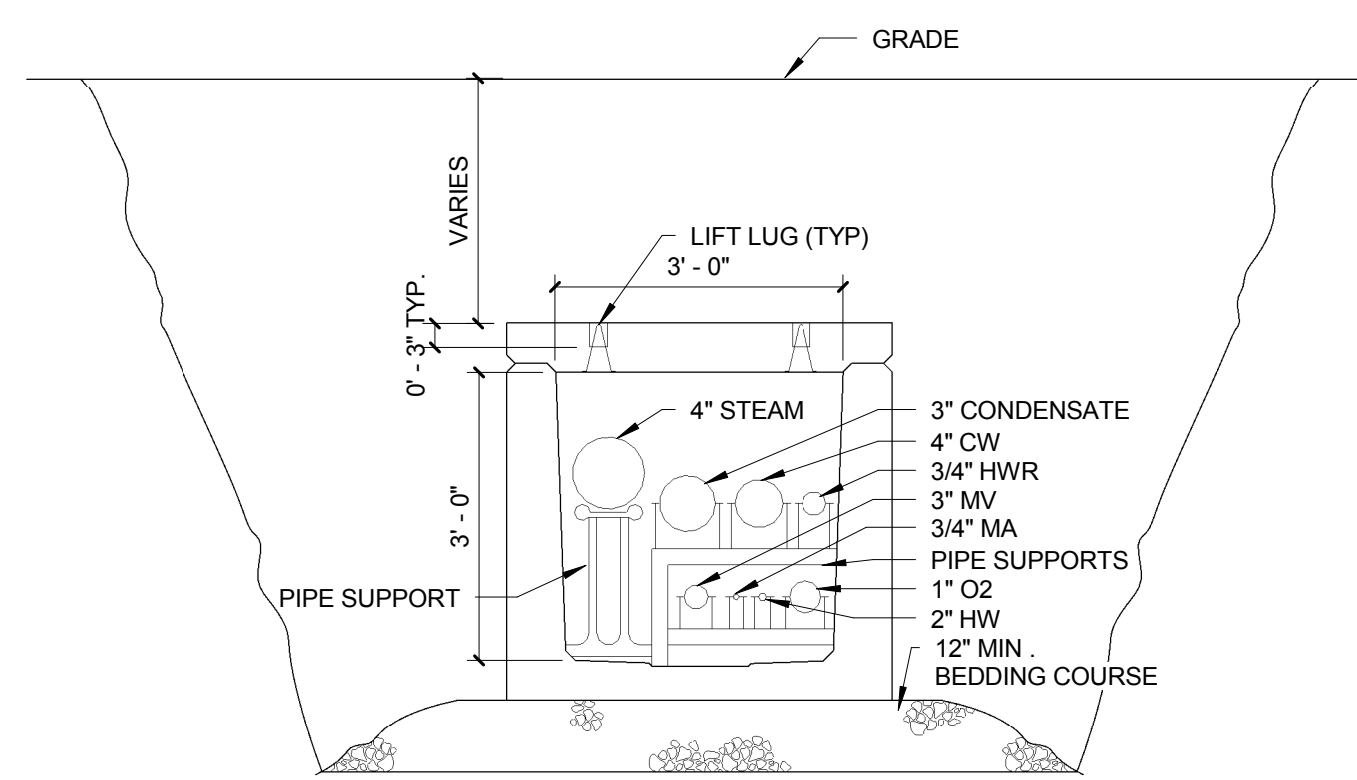


### 8 GROUND FLOOR PLUMBING PLAN

SCALE: 1/8" = 1'-0"

### 9 NOTES:

- CONNECT NEW O2 PIPING TO EX.
- CONNECT NEW MV TO EX. MEDICAL AIR SYSTEM. INCREASE MAIN SIZE FROM PUMPS TO 3" AND CONNECT NEW AND EX MV MAINS.
- CONNECT NEW CW PIPING TO EX.
- CONNECT NEW HW PIPING TO EX.
- CONNECT NEW HWR PIPING TO EX. 1-1/4" HWR. POINT OF CONNECTION SHALL BE DOWN STREAM OF EX. HWR PUMP PRIOR TO COPPER SILVER IONIZATION SYSTEM.
- CONNECT NEW W PIPING TO EX.
- CONNECT NEW MA TO EX. AT MEDICAL AIR SYSTEM. CONNECT NEW 3/4" MA TO EX. MAIN RIGHT OF PUMPS.
- NEW HWR RECIRCULATION PUMP. PUMP CAPACITY SHALL BE 10 GPM AT 20 FOOT OF HEAD.
- PROVIDE PRECAST TUNNEL SEE DWG 7-P101 FOR DETAIL. TUNNEL TO BE SLOPED TOWARDS MECHANICAL ROOM. COORDINATE PIPING LOCATIONS AND SUPPORTS WITH HVAC. PROVIDE LARGER PRECAST SECTIONS AS REQUIRED FOR STEAM PIPING EXPANSION LOOPS. PROVIDE FINAL DETAIL OF TUNNEL AND PIPING LAYOUT FOR REVIEW.



- NOTE:
- SECTION TO BE KISTNER PRECAST TUNNEL T-3 OR APPROVED EQUAL.
  - COORDINATE CONNECTIONS TO PRECAST TUNNEL UNITS TO PROVIDE A SEALED JOINT.
  - PRECAST SECTION TO BE DESIGNED FOR HS20-44 LIVE LOAD.
  - EXTERIOR OF PRECAST TUNNEL TO BE COATED WITH BITUMASTIC WATERPROOFING MATERIAL.
  - ALL JOINTS TO BE WATERTIGHT FOR TUNNEL.

### 7 TUNNEL SECTION

### 6 PLUMBING FIXTURE CONNECTION SCHEDULE

#### FIXTURE ROUGH-IN

ABBREV.	FIXTURE	DRAINAGE		WATER	
		W	V	CW	HW
P-101	WATER CLOSET	4"	2"	1-1/4"	—
P-114	WATER CLOSET	4"	2"	1-1/4"	—
P-402	LAVATORY	1-1/2"	1-1/2"	1/2"	1/2"
P-408	LAVATORY	1-1/2"	1-1/2"	1/2"	1/2"
P-502	MOP SINK	3"	1-1/2"	1/2"	1/2"
P-505	CLINICAL SINK	4"	2"	1-1/4"	1/2"
P-528	SINK	1-1/2"	1-1/2"	1/2"	1/2"
P-702	SHOWER	2"	1-1/2"	1/2"	1/2"
P-705	BATH TUB	2"	1-1/2"	1/2"	1/2"

### 5 WATER CONNECTIONS

(WHERE OTHERWISE NOT SHOWN)

BRANCH PIPE SIZE	1/2"	3/4"	1"	1-1/4"	1-1/2"	2"	2-1/2"
1/2" FIXTURE CONNECTION	2	3 TO 4	5 TO 7	8 TO 13	14 TO 23	—	—
3/4" FIXTURE CONNECTION	—	1	2	3 TO 5	5 TO 9	9 TO 24	—
3/4" FLUSH VALVE	—	—	1	3	4 TO 7	8 TO 24	—
1" FLUSH VALVE	—	—	—	1	2 TO 4	5 TO 12	13 TO 25

### 4 ABBREVIATIONS

CO.	CLEANOUT
CONT.	CONTINUED
CW	COLD WATER
DN	DOWN
DWG	DRAWING
EF	EXISTING FIXTURE TO REMAIN
EX	EXISTING
EXIST	EXISTING
FCO	FLOOR CLEANOUT
FD	FLOOR DRAIN
HVAC	HEATING-VENTILATION-AIR CONDITIONING
HW	HOT WATER
HWR	HOT WATER RETURN
MA	MEDICAL AIR
MV	MEDICAL VACUUM
OFRD	OVERFLOW DRAIN
O2	OXYGEN
S.F.	SQUARE FOOT
ST	STORM SEWER
V	VENT
W	WASTE
W/	WITH
WCO	WALL CLEANOUT
ZVB	ZONE VALVE BOX

### 3 DEMOLITION NOTES

- PERFORM ALL WORK OF A DEMOLITION NATURE THAT MAY BE REQUIRED OR NECESSARY FOR A FULL AND COMPLETE EXECUTION OF THE WORK. WHETHER OR NOT SHOWN OR SPECIFIED, THE EXACT EXTENT OF DEMOLITION MAY NOT BE FULLY INDICATED BY THE DRAWINGS. DETERMINE THE NATURE AND EXTENT OF DEMOLITION THAT WILL BE NECESSARY BY COMPARING THE CONTRACT DOCUMENTS WITH THE EXISTING FIELD CONDITIONS PRIOR TO BIDS.
- MATERIALS AND EQUIPMENT TO BE SALVAGED OR REUSED SHALL BE IDENTIFIED BY THE OWNER. THESE ITEMS ARE THE PROPERTY OF THE OWNER AND SHALL BE RETURNED TO THE OWNERS DESIGNATED STORAGE AREA. WHERE REMOVAL IS REQUIRED THE CONTRACTOR SHALL BE RESPONSIBLE FOR CARE TAKEN DURING THE HANDLING OF THESE ITEMS.
- DEMOLISHED MATERIALS AND EQUIPMENT NOT BEING SALVAGED OR REUSED, SHALL BECOME THE PROPERTY OF THE CONTRACTOR AND REMOVED FROM THE SITE AND LEGALLY DISPOSED OF.
- WHERE EXISTING FIXTURES ARE INDICATED TO BE DEMOLISHED, THIS SHALL INCLUDE ALL ASSOCIATED PIPING, CARRIERS, SUPPORTS, SLEEVES, HANGERS, FITTINGS, AND OTHER ACCESSORIES. PIPING SHALL BE REMOVED TO A LOCATION ABOVE CEILING OR BEHIND WALLS AND CAPPED, HOWEVER NO INACTIVE BRANCH OF MORE THAN 2 FEET IN LENGTH CAN REMAIN ON ANY PIPE. CONTRACTOR SHALL REMOVE AS REQUIRED.
- WHERE DEMOLITION OF FIXTURE AND REMOVAL OF PIPING OR OTHER ACCESSORY LEAVES AN OPENING IN THE FLOOR, WALL, OR CEILING, SAME SHALL BE PATCHED TO MATCH EXISTING ADJACENT FINISH.

### 2 GENERAL NOTES

- ALL VALVES SHALL BE READILY ACCESSIBLE FROM A SAFE HEIGHT ON A SIX FOOT LADDER AND TO BE CLEAR OF ALL OBSTRUCTIONS. OPERATION SHALL NOT TO BE ENCUMBERED BY ANY DEVICE OR EQUIPMENT.
- ALL WATER PIPING SUPPLYING FIXTURES FROM WALLS OR CHASES SHALL BE PIPED FROM A FULL SIZED HORIZONTAL MANIFOLD. VERTICAL BRANCHES FROM THE MANIFOLD, INCLUDING AIR CHAMBERS, SHALL BE ONE PIPE SIZE LARGER THAN THE SIZE INDICATED UNDER "CONNECTIONS" OF THE FIXTURE SPECIFICATIONS. SEE PLANS FOR SUPPLY PIPE SIZING TO WALLS OR CHASES.
- DO NOT SUPPORT PLUMBING PIPING FROM METAL DECK.
- COORDINATE SCHEDULE FOR HOOK-UPS TO EXISTING SYSTEMS AND EQUIPMENT REMOVAL OR RELOCATIONS WITH THE OWNER AND PERFORM THIS WORK AT SUCH TIMES TO ENSURE THAT PERIODS OF SHUTDOWN WILL BE ACCEPTABLE TO THE OWNER.
- VERIFY EXACT LOCATION OF CONNECTION POINTS (NEW TO EXISTING) IN FIELD PRIOR TO CONSTRUCTION.
- COORDINATE INSTALLATION OF NEW PIPING WITH EXISTING BUILDING STRUCTURE, DUCTWORK, PIPING, ELECTRICAL CONDUIT, LIGHTING, ETC.
- RELOCATE EXISTING PIPING IN EXISTING CEILING SPACES TO ACCOMMODATE ALL RENOVATIONS AND ADDITIONS.
- REFER TO ARCHITECTURAL ELEVATION DRAWINGS FOR LOCATION OF WALL MOUNTED MECHANICAL ITEMS.
- THIS PLAN IS APPROVED FOR WORK INDICATED PER THE APPLICABLE DRAWINGS AND SPECIFICATIONS ONLY. ALL OTHER AREAS SHOWN ARE FOR REFERENCE ONLY AND SHALL NOT BE CONSIDERED OR APPROVED TO BE IN ACCORDANCE WITH APPLICABLE CODES OR AUTHORITY HAVING JURISDICTION.
- NOT ALL PIPING AND PIPE SIZES ARE SHOWN ON THE DRAWING FOR CLARITY. REFER TO STACK DIAGRAMS, WATER RISERS, AND MEDICAL GAS RISER FOR ADDITIONAL PIPING AND SIZES.
- CUT PATCH AND MATCH EXISTING CEILINGS, WALLS AND FLOORS AS REQUIRED PER INSTALLATION OF PLUMBING PIPING.
- CAREFULLY REMOVE AND INSTALL EXISTING CEILING TILES AS REQUIRED PER INSTALLATION OF PLUMBING PIPING. DAMAGED CEILING TILES TO BE REPLACED BY PLUMBING CONTRACTOR.
- DO NOT INSTALL ANY NEW WORK DIRECTLY ABOVE ANY ELECTRICAL PANELS AND TRANSFORMERS.

### 1 SYMBOLS

— — — — —	COLD WATER (CW)
— — — — —	COLD WATER (CW) EXISTING
— — — — —	COLD WATER (CW) DEMO
— — — — —	HOT WATER (HW)
— — — — —	HOT WATER (HW) EXISTING
— — — — —	HOT WATER (HW) DEMO
— — — — —	HOT WATER RETURN (HWR)
— — — — —	HOT WATER RETURN (HWR) EXISTING
— — — — —	HOT WATER RETURN (HWR) DEMO
— — — — —	VENT (V)
— — — — —	VENT (V) EXISTING
— — — — —	VENT (V) DEMO
— — — — —	WASTE (W)
— — — — —	WASTE (W) EXISTING
— — — — —	WASTE (W) DEMO
— — — — —	STORM (ST)
— — — — —	STORM (ST) EXISTING
— — — — —	STORM (ST) DEMO
— — — — —	MEDICAL VACUUM (MV)
— — — — —	MEDICAL VACUUM (MV) EXISTING
— — — — —	MEDICAL VACUUM (MV) DEMO
— — — — —	OXYGEN (O2)
— — — — —	OXYGEN (O2) EXISTING
— — — — —	OXYGEN (O2) DEMO
— — — — —	MEDICAL AIR (MA)
— — — — —	MEDICAL AIR (MA) EXISTING
— — — — —	MEDICAL AIR (MA) DEMO
— — — — —	VALVE
— — — — —	BALL VALVE
— — — — —	CHECK VALVE (SHOWN W/FLOW)
— — — — —	BALANCING VALVE
— — — — —	CAPPED PIPING
— — — — —	HOSE BIB (HB)
— — — — —	FLOOR DRAIN (FD)
— — — — —	FLOOR DRAIN (FD)
— — — — —	CLEANOUT (CO)
— — — — —	FLOOR CLEANOUT (FCO)
— — — — —	P-TRAP
— — — — —	WALL CLEANOUT (CO)
— — — — —	BOTTOM DROP
— — — — —	ELBOW DOWN
— — — — —	ELBOW UP
— — — — —	RISE OR DROP
— — — — —	POINT OF CONNECTION (NEW TO EXISTING)
— — — — —	OXYGEN OUTLET
— — — — —	MEDICAL VACUUM OUTLET
— — — — —	MEDICAL AIR OUTLET
— — — — —	ZONE VALVE BOX
— — — — —	KEYED NOTE TAG

FULLY SPRINKLERED

ALTERNATE No. 4	07/01/14
ALTERNATE No. 2 and ALTERNATE No. 3	06/19/14
CONSTRUCTION DOCUMENT - 100% SUBMISSION	07/19/13
CONSTRUCTION DOCUMENT - 90% SUBMISSION	04/05/13
FIRE/LIFE SAFETY REVIEW	03/15/13
DESIGN DEVELOPMENT - 60% SUBMISSION (3RD)	11/09/12
DESIGN DEVELOPMENT - 60% SUBMISSION (2ND)	10/05/12
DESIGN DEVELOPMENT - 60% SUBMISSION (1ST)	08/22/12
SCHEMATIC DESIGN - 30% SUBMISSION	09/09/11
Revisions	Date

VA WESTERN NEW YORK HEALTHCARE SYSTEM  
222 RICHMOND AVE  
BATAVIA, NEW YORK 14020

**CANNON DESIGN**  
2170 Whitehaven Road, Grand Island, New York 14027  
T: 716.773.6800 F: 716.773.5909

Boston • New York • Baltimore • Washington DC • Buffalo  
Toronto • Chicago • St. Louis • Calgary • Vancouver  
Victoria • San Francisco • Los Angeles • Shanghai

Architect CANNON PROJECT #: 3526.00

stamp

CARDIOLOGY MANAGER	DATE	ENGINEERING MANAGER	DATE
INFECTION CONTROL	DATE	CARELINE MANAGER	DATE
SAFETY OFFICER	DATE	CHIEF OF STAFF	DATE

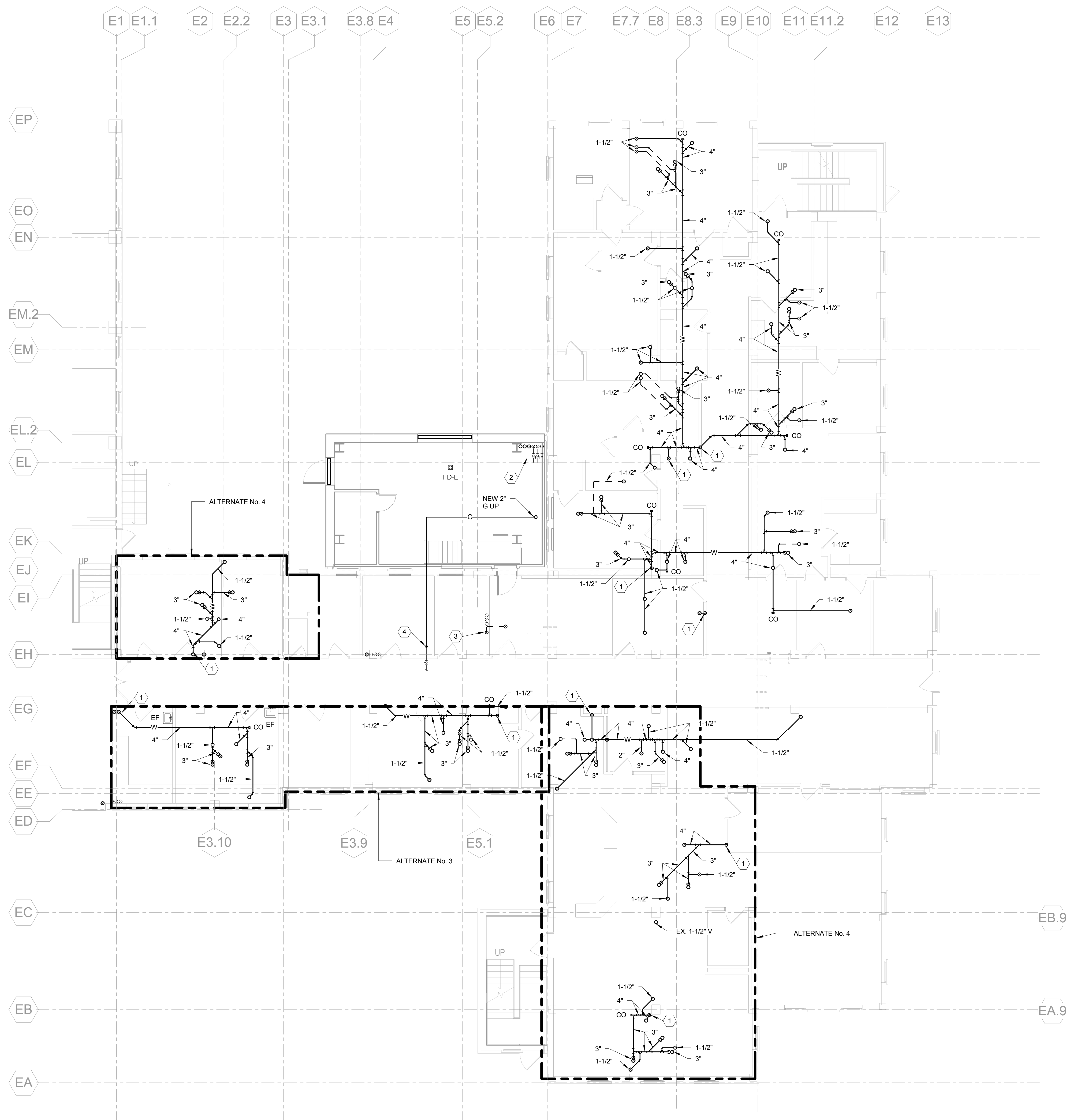
Drawing Title	GROUND FLOOR PLUMBING PLAN
MEDICAL CENTER DIRECTOR	DATE
ASSOCIATE MEDICAL CENTER DIRECTOR	DATE

Project Title	WARD C RENOVATIONS
Building Number	1
Checked	JKB
Drawn	DKM
Location	V.A.M.C. BATAVIA, NEW YORK

Date	09/09/11
Station No.	528A
353	P101



three-eighths inch = one foot  
one-eighth inch = one foot  
one-quarter inch = one foot  
three-quarters inch = one foot  
one-half inch = one foot  
one and one-half inch = one foot  
three inches = one foot



- 2 NOTES:
- CONNECT NEW W PIPING TO EX.
  - PROVIDE 2\" CW, 1-1/2\" HW AND 1/2\" HWR VALVED AND CAPPED CONNECTION FOR FUTURE.
  - CONNECT NEW V PIPING TO EX.
  - CONNECT NEW 2\" G TO EX.

1 FIRST FLOOR PLUMBING PLAN  
SCALE: 1/8\" = 1'-0"

FULLY SPRINKLERED

ALTERNATE No. 4	07/01/14
ALTERNATE No. 2 and ALTERNATE No. 3	06/19/14
CONSTRUCTION DOCUMENT - 100% SUBMISSION	07/19/13
CONSTRUCTION DOCUMENT - 90% SUBMISSION	04/05/13
FIRE/LIFE SAFETY REVIEW	03/15/13
DESIGN DEVELOPMENT - 60% SUBMISSION (3RD)	11/09/12
DESIGN DEVELOPMENT - 60% SUBMISSION (2ND)	10/05/12
DESIGN DEVELOPMENT - 60% SUBMISSION (1ST)	08/22/12
SCHEMATIC DESIGN - 30% SUBMISSION	09/09/11
Revisions	Date

VA WESTERN NEW YORK HEALTHCARE SYSTEM  
222 RICHMOND AVE  
BATAVIA, NEW YORK 14020

**CANNONDESIGN**  
2170 Whitehaven Road, Grand Island, New York 14072  
T: 716.773.6800 F: 716.773.5909

Boston • New York • Baltimore • Washington DC • Buffalo  
Toronto • Chicago • St. Louis • Calgary • Vancouver  
Victoria • San Francisco • Los Angeles • Shanghai

CANNON PROJECT #: 3526.00

Architect

stamp

CARDIOLOGY MANAGER

DATE

ENGINEERING MANAGER

DATE

INFECTION CONTROL

DATE

CARELINE MANAGER

DATE

SAFETY OFFICER

DATE

CHIEF OF STAFF

DATE

Drawing Title

FIRST FLOOR PLUMBING PLAN

Project Title

WARD C RENOVATIONS

Date

09/09/11

Station No.

5284

Building Number

1

Checked

JKB

Drawn

DKM

Location

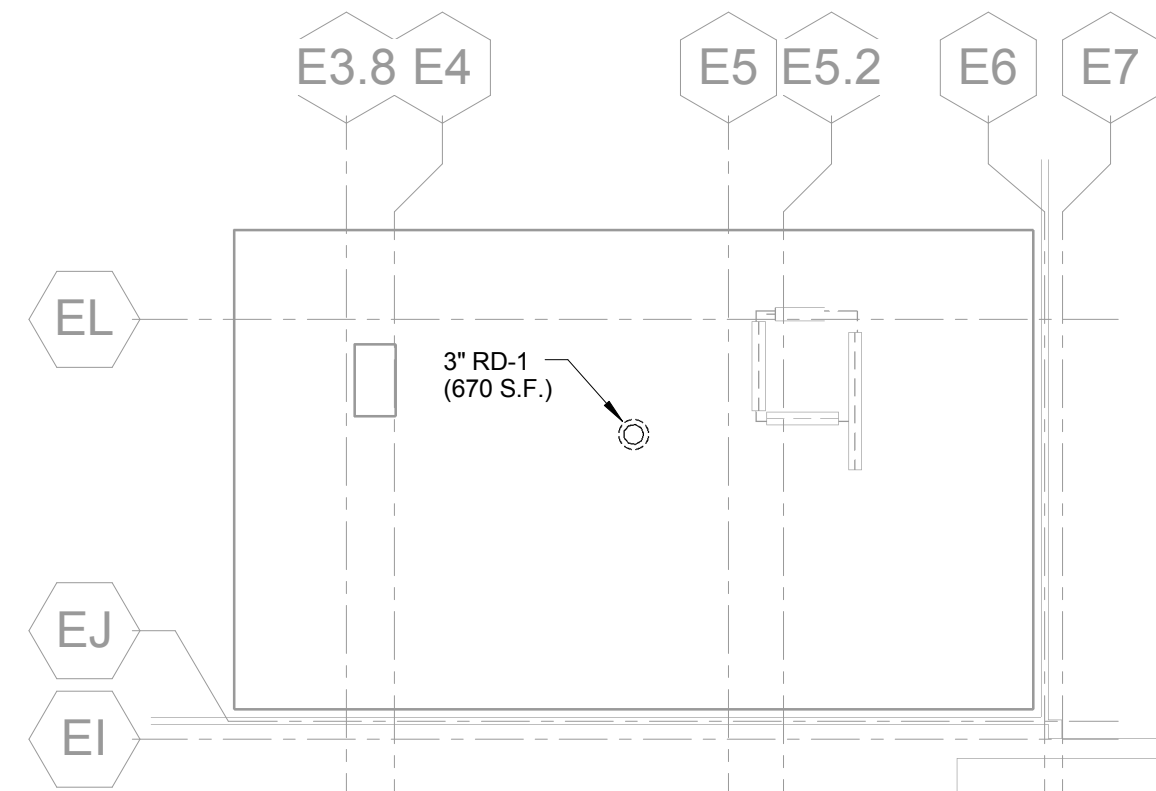
V.A.M.C. BATAVIA, NEW YORK

353

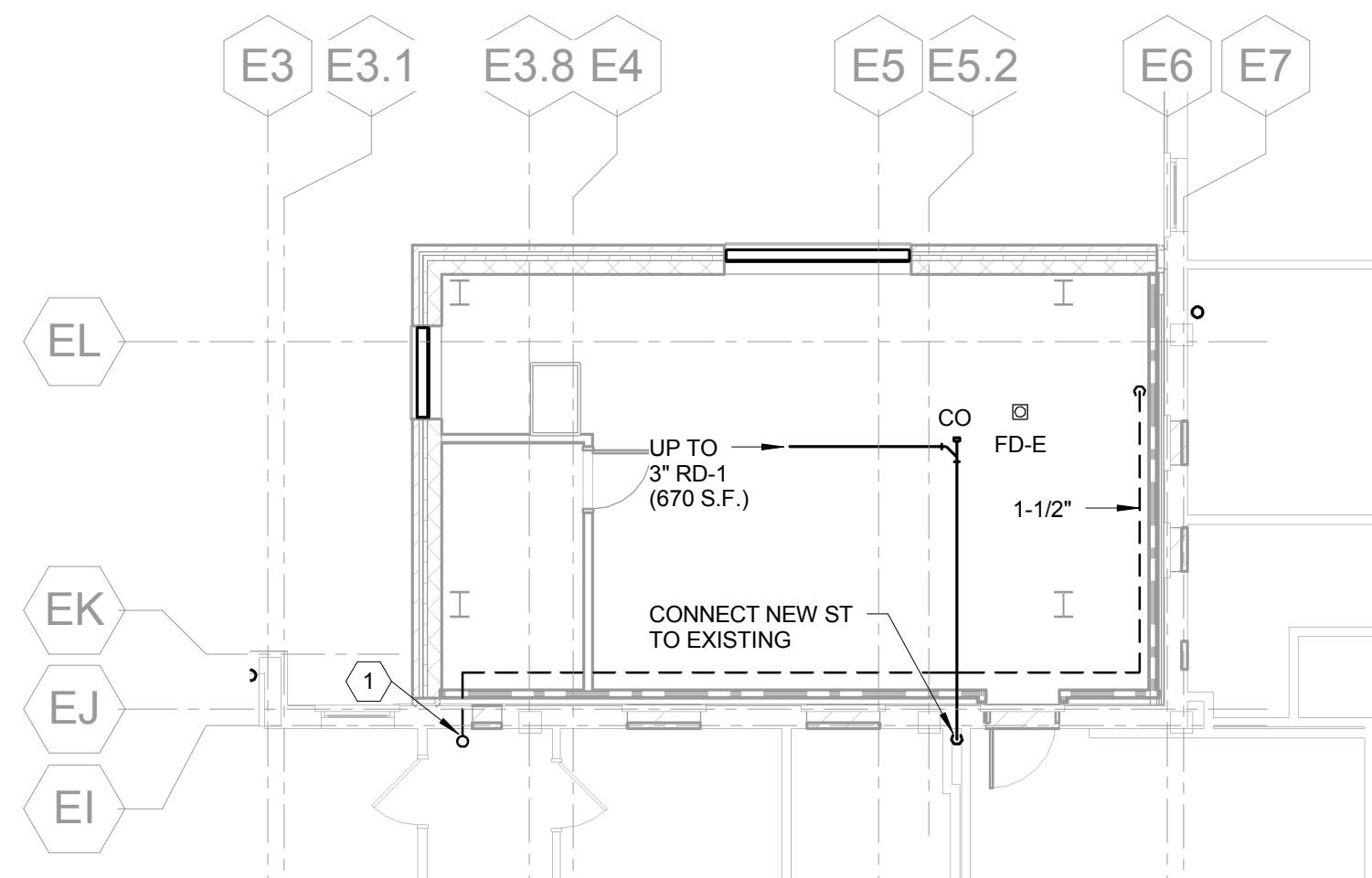
P102



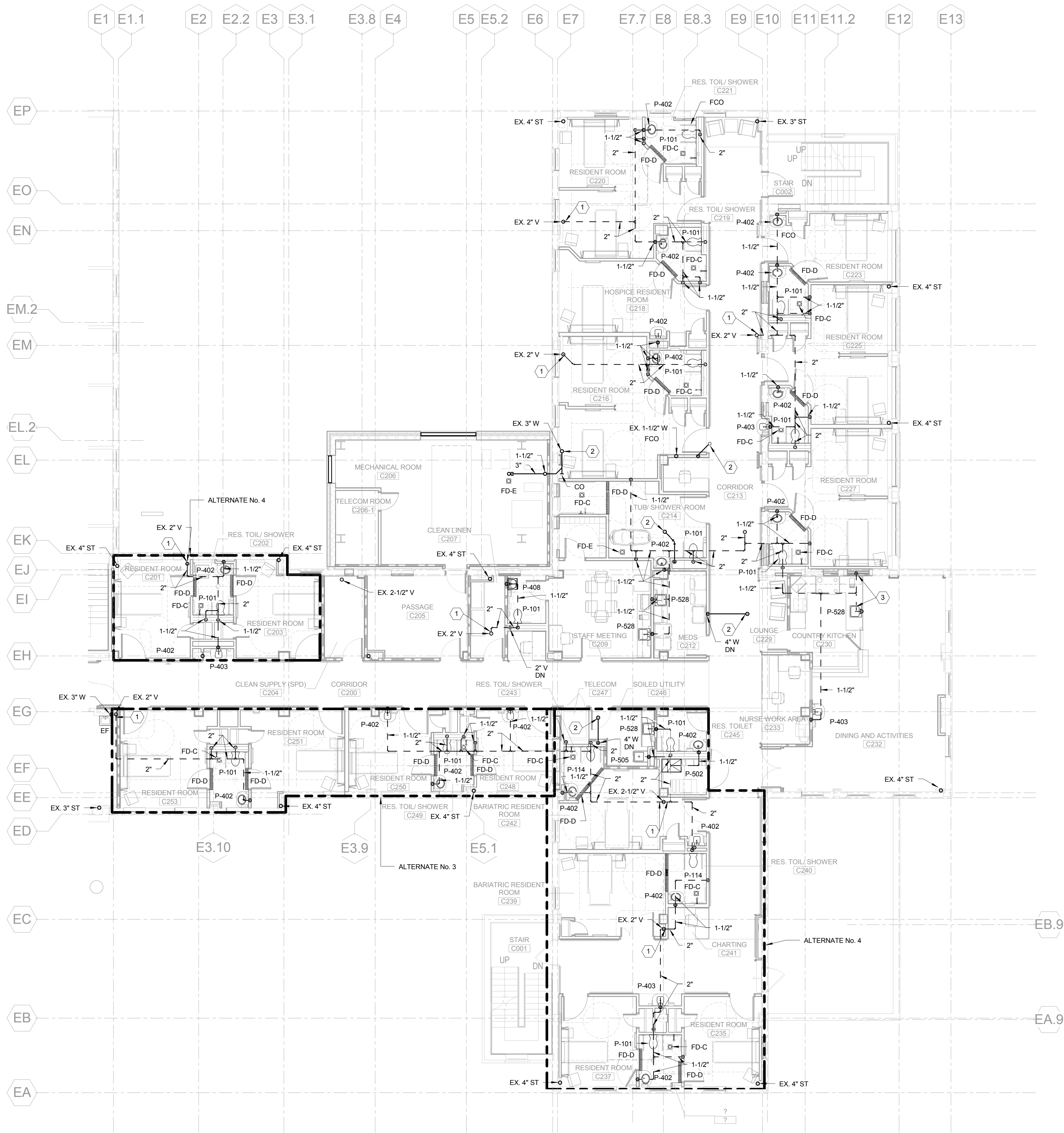
Department of Veterans Affairs



3 PARTIAL ROOF LEVEL PLUMING PLAN



2 PARTIAL THIRD FLOOR PLUMBING PLAN - WASTE AND VENT  
SCALE: 1/8" = 1'-0"



1 SECOND FLOOR PLUMBING PLAN - WASTE AND VENT  
SCALE: 1/8" = 1'-0"

- 4 NOTES:
1. CONNECT NEW V PIPING TO EX.
  2. CONNECT NEW W PIPING TO EX.
  3. ROUTE PIPING UNDER COUNTER TO WALL.
  4. PROVIDE 3/4" CW MAKE-UP WITH INLINE BACKFLOW PREVENTER FOR HVAC ROOF TOP UNIT. CONTINUATION BY HVAC.

ALTERNATE No. 4	07/01/14
ALTERNATE No. 2 and ALTERNATE No. 3	06/19/14
CONSTRUCTION DOCUMENT - 100% SUBMISSION	07/19/13
CONSTRUCTION DOCUMENT - 90% SUBMISSION	04/05/13
FIRE/LIFE SAFETY REVIEW	03/15/13
DESIGN DEVELOPMENT - 60% SUBMISSION (3RD)	11/09/12
DESIGN DEVELOPMENT - 60% SUBMISSION (2ND)	10/05/12
DESIGN DEVELOPMENT - 60% SUBMISSION (1ST)	08/22/12
SCHEMATIC DESIGN - 30% SUBMISSION	09/09/11
Revisions	Date

VA WESTERN NEW YORK HEALTHCARE SYSTEM  
222 RICHMOND AVE  
BATAVIA, NEW YORK 14020

**CANNON**DESIGN

2170 Whitehaven Road, Grand Island, New York 14027  
T: 716.773.6800 F: 716.773.5909

Boston • New York • Baltimore • Washington DC • Buffalo  
Toronto • Chicago • St. Louis • Calgary • Vancouver  
Victoria • San Francisco • Los Angeles • Shanghai

Architect  
CANNON PROJECT #: 3526.00

stamp

CARDIOLOGY MANAGER	DATE	ENGINEERING MANAGER	DATE
INFECTION CONTROL	DATE	CARELINE MANAGER	DATE
SAFETY OFFICER	DATE	CHIEF OF STAFF	DATE

Drawing Title  
**SECOND, THIRD FLOOR AND ROOF  
PLUMBING PLAN**

MEDICAL CENTER DIRECTOR	DATE
ASSOCIATE MEDICAL CENTER DIRECTOR	DATE

Project Title  
**WARD C RENOVATIONS**

Building Number	Checked	Drawn
1	JKB	DKM
Location	V.A.M.C. BATAVIA, NEW YORK	

Date  
**09/09/11**

Station No.  
528A

**353**

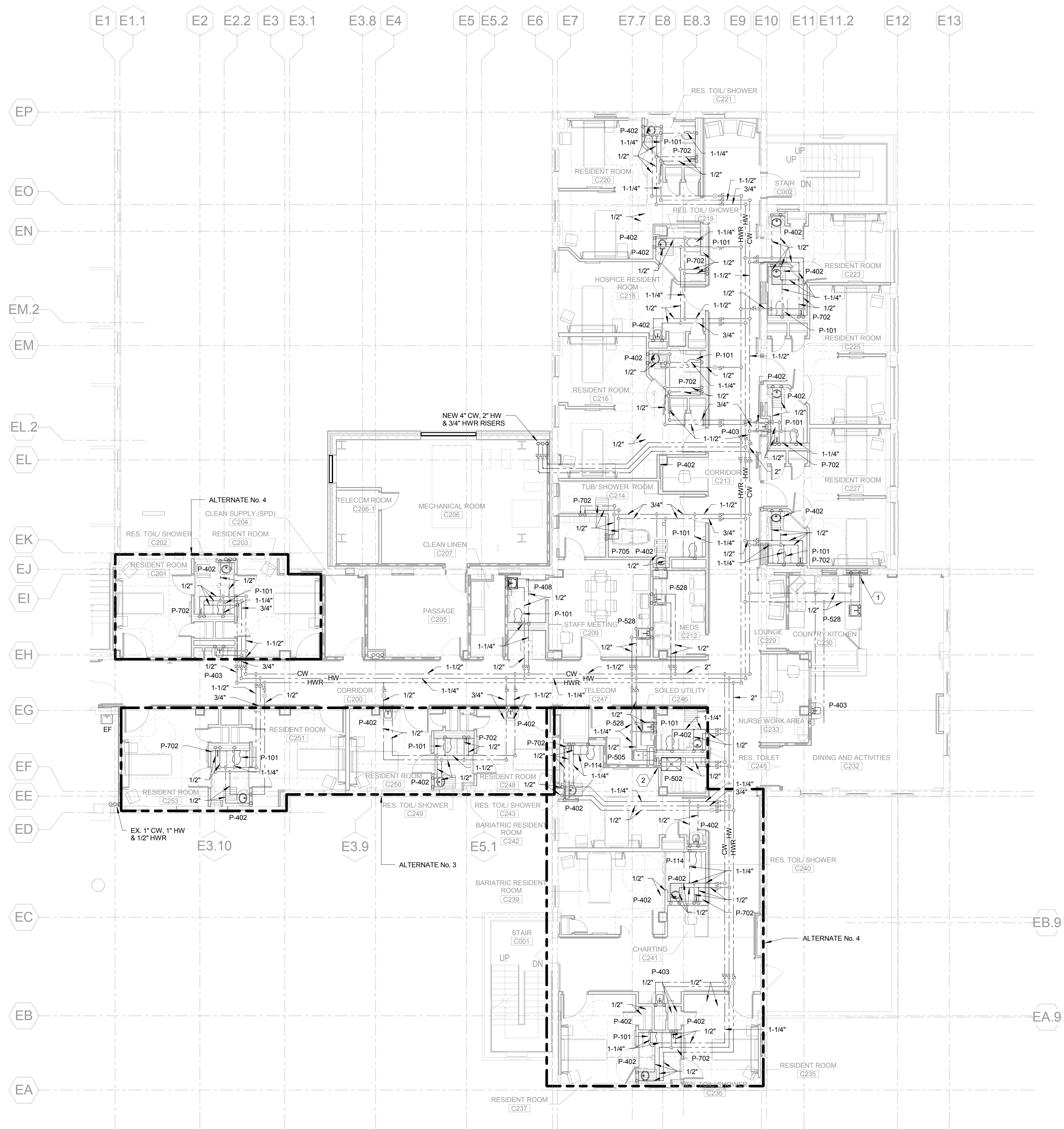
**P103**

FULLY SPRINKLERED

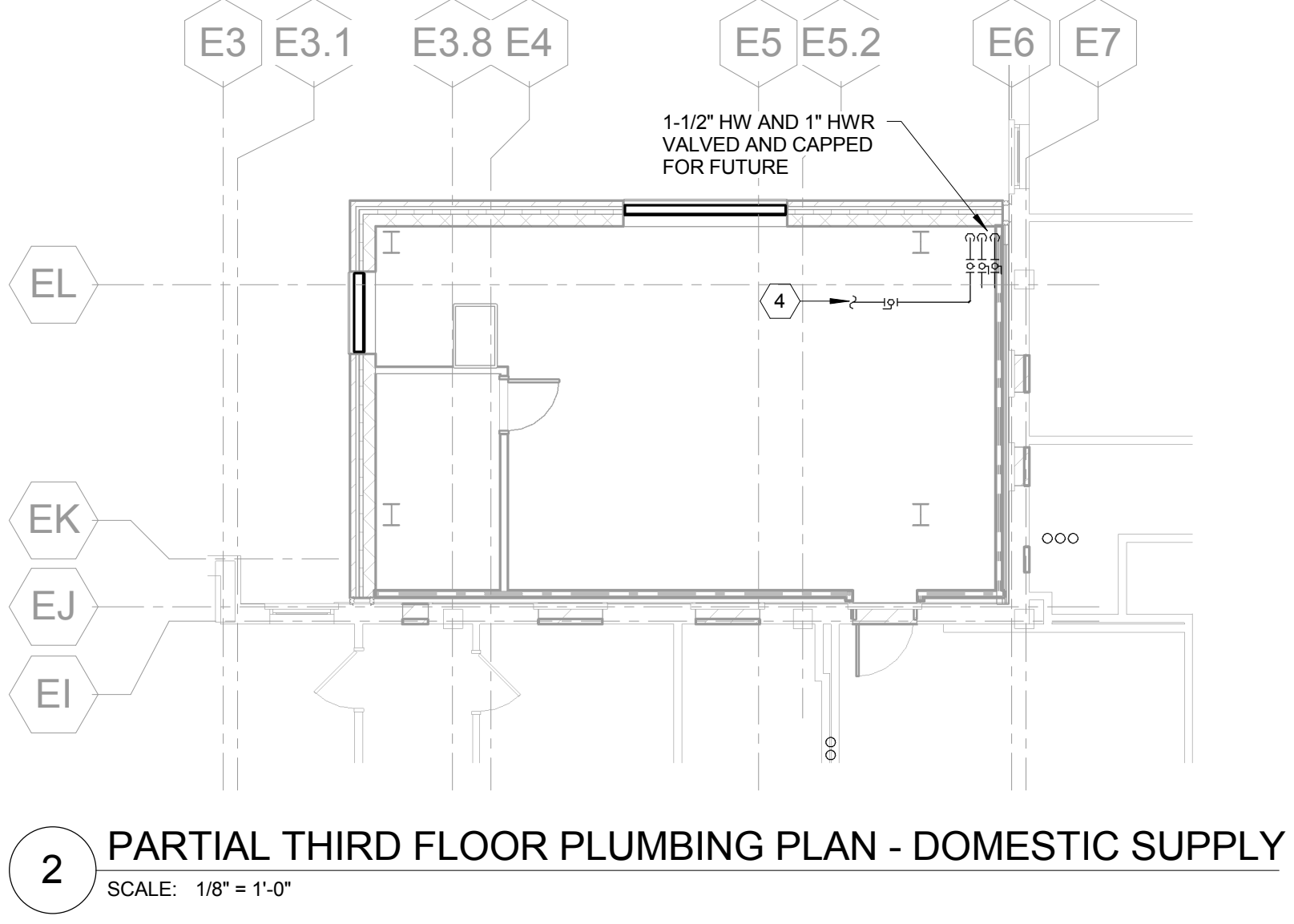


Department of  
Veterans Affairs







- 3 NOTES:
- 2. PROVIDE 2" CW, 1-1/2" HW AND 1/2" HWR VALVED AND CAPPED CONNECTION FOR FUTURE.
  - 2. DROP PIPING IN WALL AND RUN UNDER COUNTER TO SINK.



1 SECOND FLOOR PLUMBING PLAN - DOMESTIC SUPPLY  
SCALE: 1/8" = 1'-0"

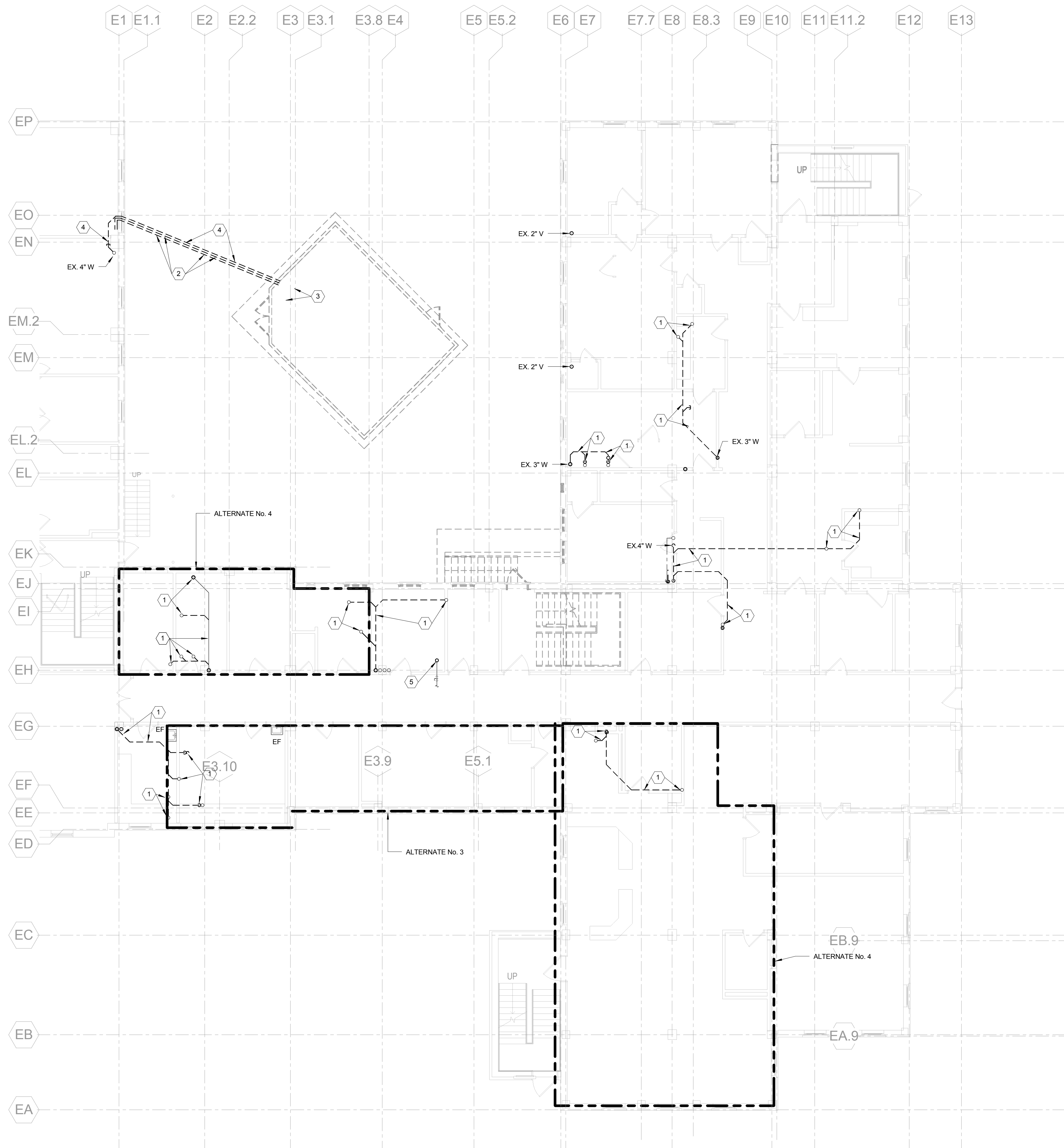
2 PARTIAL THIRD FLOOR PLUMBING PLAN - DOMESTIC SUPPLY  
SCALE: 1/8" = 1'-0"

FULLY SPRINKLERED

<table><tr><td>ALTERNATE No. 4</td><td>07/01/14</td></tr><tr><td>ALTERNATE No. 2 and ALTERNATE No. 3</td><td>06/19/14</td></tr><tr><td>CONSTRUCTION DOCUMENT - 100% SUBMISSION</td><td>07/19/13</td></tr><tr><td>CONSTRUCTION DOCUMENT - 90% SUBMISSION</td><td>04/05/13</td></tr><tr><td>FIRE/LIFE SAFETY REVIEW</td><td>03/15/13</td></tr><tr><td>DESIGN DEVELOPMENT - 60% SUBMISSION (3RD)</td><td>11/09/12</td></tr><tr><td>DESIGN DEVELOPMENT - 60% SUBMISSION (2ND)</td><td>10/05/12</td></tr><tr><td>DESIGN DEVELOPMENT - 60% SUBMISSION (1ST)</td><td>08/22/12</td></tr><tr><td>SCHEMATIC DESIGN - 30% SUBMISSION</td><td>09/09/11</td></tr><tr><td>Revisions</td><td>Date</td></tr></table>	ALTERNATE No. 4	07/01/14	ALTERNATE No. 2 and ALTERNATE No. 3	06/19/14	CONSTRUCTION DOCUMENT - 100% SUBMISSION	07/19/13	CONSTRUCTION DOCUMENT - 90% SUBMISSION	04/05/13	FIRE/LIFE SAFETY REVIEW	03/15/13	DESIGN DEVELOPMENT - 60% SUBMISSION (3RD)	11/09/12	DESIGN DEVELOPMENT - 60% SUBMISSION (2ND)	10/05/12	DESIGN DEVELOPMENT - 60% SUBMISSION (1ST)	08/22/12	SCHEMATIC DESIGN - 30% SUBMISSION	09/09/11	Revisions	Date	<p>VA WESTERN NEW YORK HEALTHCARE SYSTEM 222 RICHMOND AVE BATAVIA, NEW YORK 14020</p>	<p><b>CANNON</b>DESIGN 2170 Whitehaven Road, Grand Island, New York 14072 T: 716.773.6800 F: 716.773.5909</p> <p>Boston • New York • Baltimore • Washington DC • Buffalo Toronto • Chicago • St. Louis • Calgary • Vancouver Victoria • San Francisco • Los Angeles • Shanghai</p> <p>Architect CANNON PROJECT #: 3526.00</p> <p>stamp</p>	<table><tr><td>CARDIOLOGY MANAGER</td><td>DATE</td><td>ENGINEERING MANAGER</td><td>DATE</td></tr><tr><td>INFECTION CONTROL</td><td>DATE</td><td>CARELINE MANAGER</td><td>DATE</td></tr><tr><td>SAFETY OFFICER</td><td>DATE</td><td>CHIEF OF STAFF</td><td>DATE</td></tr></table>	CARDIOLOGY MANAGER	DATE	ENGINEERING MANAGER	DATE	INFECTION CONTROL	DATE	CARELINE MANAGER	DATE	SAFETY OFFICER	DATE	CHIEF OF STAFF	DATE	<table><tr><td colspan="2">Drawing Title <b>SECOND AND THIRD FLOOR PLUMBING SUPPLY PLAN</b></td></tr><tr><td>MEDICAL CENTER DIRECTOR</td><td>DATE</td></tr><tr><td>ASSOCIATE MEDICAL CENTER DIRECTOR</td><td>DATE</td></tr></table>	Drawing Title <b>SECOND AND THIRD FLOOR PLUMBING SUPPLY PLAN</b>		MEDICAL CENTER DIRECTOR	DATE	ASSOCIATE MEDICAL CENTER DIRECTOR	DATE	<table><tr><td colspan="2">Project Title <b>WARD C RENOVATIONS</b></td></tr><tr><td>Building Number 1</td><td>Checked JKB</td></tr><tr><td>Drawn DKM</td><td></td></tr><tr><td colspan="2">Location V.A.M.C. BATAVIA, NEW YORK</td></tr></table>	Project Title <b>WARD C RENOVATIONS</b>		Building Number 1	Checked JKB	Drawn DKM		Location V.A.M.C. BATAVIA, NEW YORK		<table><tr><td>Date <b>09/09/11</b></td></tr><tr><td>Station No. 528A</td></tr><tr><td><b>353</b></td><td><b>P104</b></td></tr></table>	Date <b>09/09/11</b>	Station No. 528A	<b>353</b>	<b>P104</b>	 
ALTERNATE No. 4	07/01/14																																																								
ALTERNATE No. 2 and ALTERNATE No. 3	06/19/14																																																								
CONSTRUCTION DOCUMENT - 100% SUBMISSION	07/19/13																																																								
CONSTRUCTION DOCUMENT - 90% SUBMISSION	04/05/13																																																								
FIRE/LIFE SAFETY REVIEW	03/15/13																																																								
DESIGN DEVELOPMENT - 60% SUBMISSION (3RD)	11/09/12																																																								
DESIGN DEVELOPMENT - 60% SUBMISSION (2ND)	10/05/12																																																								
DESIGN DEVELOPMENT - 60% SUBMISSION (1ST)	08/22/12																																																								
SCHEMATIC DESIGN - 30% SUBMISSION	09/09/11																																																								
Revisions	Date																																																								
CARDIOLOGY MANAGER	DATE	ENGINEERING MANAGER	DATE																																																						
INFECTION CONTROL	DATE	CARELINE MANAGER	DATE																																																						
SAFETY OFFICER	DATE	CHIEF OF STAFF	DATE																																																						
Drawing Title <b>SECOND AND THIRD FLOOR PLUMBING SUPPLY PLAN</b>																																																									
MEDICAL CENTER DIRECTOR	DATE																																																								
ASSOCIATE MEDICAL CENTER DIRECTOR	DATE																																																								
Project Title <b>WARD C RENOVATIONS</b>																																																									
Building Number 1	Checked JKB																																																								
Drawn DKM																																																									
Location V.A.M.C. BATAVIA, NEW YORK																																																									
Date <b>09/09/11</b>																																																									
Station No. 528A																																																									
<b>353</b>	<b>P104</b>																																																								



three-eighths inch = one foot  
one-eighth inch = one foot  
one-quarter inch = one foot  
three-quarters inch = one foot  
one-half inch = one foot  
one and one-half inch = one foot  
three inches = one foot



- 2 NOTES:
- DISCONNECT AND REMOVE EX. W PIPING BACK TO RISER AND PREPARE PIPING FOR NEW CONNECTION.
  - DISCONNECT AND REMOVE EXISTING PLUMBING FIXTURE. REMOVE EX. CW, HW AND V PIPING IN ITS ENTIRETY.
  - DISCONNECT AND REMOVE EX. W PIPING BACK TO POINT INDICATED AND CAP.
  - DISCONNECT AND REMOVE EX. CW AND HW PIPING IN ITS ENTIRETY.
  - DISCONNECT AND REMOVE EX. G RISER. PREPARE PIPING FOR NEW CONNECTION.

1 FIRST FLOOR PLUMBING DEMOLITION  
SCALE: 1/8" = 1'-0"

FULLY SPRINKLERED

ALTERNATE No. 4	07/01/14
ALTERNATE No. 2 and ALTERNATE No. 3	06/19/14
CONSTRUCTION DOCUMENT - 100% SUBMISSION	07/19/13
CONSTRUCTION DOCUMENT - 90% SUBMISSION	04/05/13
FIRE/LIFE SAFETY REVIEW	03/15/13
DESIGN DEVELOPMENT - 60% SUBMISSION (3RD)	11/09/12
DESIGN DEVELOPMENT - 60% SUBMISSION (2ND)	10/05/12
DESIGN DEVELOPMENT - 60% SUBMISSION (1ST)	08/22/12
SCHEMATIC DESIGN - 30% SUBMISSION	09/09/11
Revisions	Date

VA WESTERN NEW YORK HEALTHCARE SYSTEM  
222 RICHMOND AVE  
BATAVIA, NEW YORK 14020

**CANNONDESIGN**  
2170 Whitehaven Road, Grand Island, New York 14072  
T: 716.773.6800 F: 716.773.5909

Boston • New York • Baltimore • Washington DC • Buffalo  
Toronto • Chicago • St. Louis • Calgary • Vancouver  
Victoria • San Francisco • Los Angeles • Shanghai

CANNON PROJECT #: 3526.00

Architect

stamp

CARDIOLOGY MANAGER	DATE	ENGINEERING MANAGER	DATE
INFECTION CONTROL	DATE	CARELINE MANAGER	DATE
SAFETY OFFICER	DATE	CHIEF OF STAFF	DATE

Drawing Title <b>FIRST FLOOR PLUMBING DEMOLITION</b>	
MEDICAL CENTER DIRECTOR	DATE
ASSOCIATE MEDICAL CENTER DIRECTOR	DATE

Project Title <b>WARD C RENOVATIONS</b>		
Building Number 1	Checked JKB	Drawn DKM
Location V.A.M.C. BATAVIA, NEW YORK		

Date	09/09/11
Station No.	528A
353	PD101





1

2

3

4

5

6

7

8

9

2

PARTIAL THIRD FLOOR PLUMBING DEMOLITION

SCALE: 1/8" = 1'-0"

1

SECOND FLOOR PLUMBING DEMOLITION

SCALE: 1/8" = 1'-0"

3

NOTES:

1. DISCONNECT AND REMOVE EXISTING PLUMBING FIXTURE.
2. DISCONNECT AND REMOVE EXISTING 02, MV AND / OR MA OUTLETS AND ASSOCIATED PIPING IN ITS ENTIRETY.
3. DISCONNECT AND REMOVE EXISTING 02, MV AND / OR MA PIPING IN ITS ENTIRETY.
4. DISCONNECT AND REMOVE EXISTING ZVB AND ALARM PANEL. DISCONNECT AND REMOVE EXISTING 02, MA AND MV PIPING IN ITS ENTIRETY.
5. DISCONNECT AND REMOVE EXISTING PRESSURE GAGES AND ASSOCIATED PRESSURE SENSORS.
6. DISCONNECT AND REMOVE EXISTING 02, MA AND MV PIPING BACK TO EXISTING RISERS AND CAP.
7. DISCONNECT AND REMOVE EXISTING ZVB. DISCONNECT AND REMOVE EXISTING 02, MV AND MA PIPING IN ITS ENTIRETY.
8. DISCONNECT AND REMOVE EX. CW, HW AND HWR PIPING IN ITS ENTIRETY.
9. DISCONNECT AND REMOVE EX. CW AND HW PIPING BACK TO THE MAIN RISERS AND CAP.
10. DISCONNECT AND REMOVE EX. V PIPING BACK TO RISER AND PREPARE PIPING FOR NEW CONNECTION.
11. DISCONNECT AND REMOVE EX. FD. CUT BACK EX. W PIPING TO MAIN AND CAP.
12. DISCONNECT AND REMOVE EX. PLUMBING FIXTURE. CUT BACK EX. V, W AND CW PIPING TO RISERS AND CAP.
13. DISCONNECT AND REMOVE EX. CW, HW, W AND V PIPING ROUGH-INS IN THERE ENTIRETY.
14. DISCONNECT AND REMOVE EX. 1-1/2" HUB DRAIN IN ITS ENTIRETY CUT BACK EX. W PIPING TO MAIN BELOW FLOOR.
15. DISCONNECT AND REMOVE EX. HB AND ASSOCIATED CW PIPING IN ITS ENTIRETY.
16. DISCONNECT AND REMOVE EX. CW CONNECTION FROM IM IN ITS ENTIRETY. REMOVE EX. HUB DRAIN AND CUT BACK EX. W PIPING BELOW FLOOR AND CAP AT MAIN.
17. DISCONNECT AND REMOVE EX. PLUMBING FIXTURE. CUT BACK EX. CW, W AND V PIPING TO EX. RISERS OR MAINS AND CAP.
18. DISCONNECT AND REMOVE EX. G PIPING IN ITS ENTIRETY.
19. DISCONNECT AND REMOVE EX. G PIPING BACK TO POINT INDICATED AND PREPARE PIPING FOR NEW CONNECTION.

ALTERNATE No. 4	07/01/14
ALTERNATE No. 2 and ALTERNATE No. 3	06/19/14
CONSTRUCTION DOCUMENT - 100% SUBMISSION	07/19/13
CONSTRUCTION DOCUMENT - 90% SUBMISSION	04/05/13
FIRE/LIFE SAFETY REVIEW	03/15/13
DESIGN DEVELOPMENT - 60% SUBMISSION (3RD)	11/09/12
DESIGN DEVELOPMENT - 60% SUBMISSION (2ND)	10/05/12
DESIGN DEVELOPMENT - 60% SUBMISSION (1ST)	08/22/12
SCHEMATIC DESIGN - 30% SUBMISSION	09/09/11
Revisions	Date

VA WESTERN NEW YORK HEALTHCARE SYSTEM  
222 RICHMOND AVE  
BATAVIA, NEW YORK 14020

**CANNON**DESIGN

2170 Whitehaven Road, Grand Island, New York 14027  
T: 716.773.8800 F: 716.773.5909

Boston ■ New York ■ Baltimore ■ Washington DC ■ Buffalo  
Toronto ■ Chicago ■ St. Louis ■ Calgary ■ Vancouver  
Victoria ■ San Francisco ■ Los Angeles ■ Shanghai

Architect  
CANNON PROJECT #: 3526.00

stamp

CARDIOLOGY MANAGER

DATE

ENGINEERING MANAGER

DATE

INFECTION CONTROL

DATE

CARELINE MANAGER

DATE

SAFETY OFFICER

DATE

CHIEF OF STAFF

DATE

Drawing Title

SECOND FLOOR PLUMBING  
DEMOLITION

MEDICAL CENTER DIRECTOR

DATE

ASSOCIATE MEDICAL CENTER DIRECTOR

DATE

Project Title

WARD C RENOVATIONS

Building Number

1

Checked

JKB

Drawn

DKM

Location

V.A.M.C. BATAVIA, NEW YORK

Date

09/09/11

Station No.

5284

353

PD102

FULLY SPRINKLERED



Department of  
Veterans Affairs