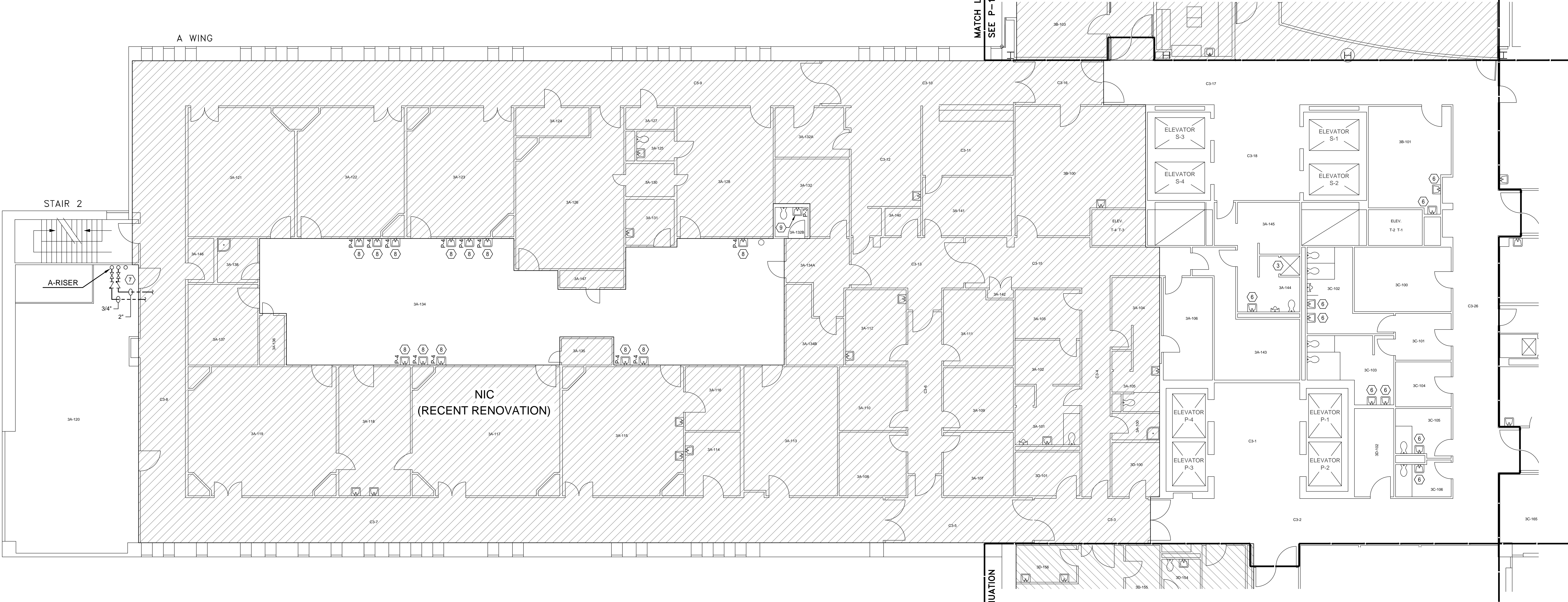


CONSTRUCTION NOTES:

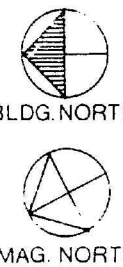
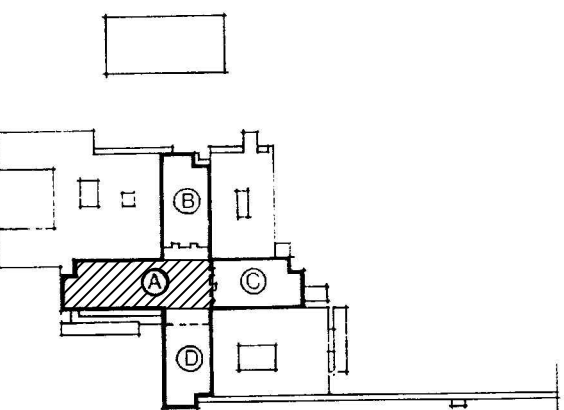
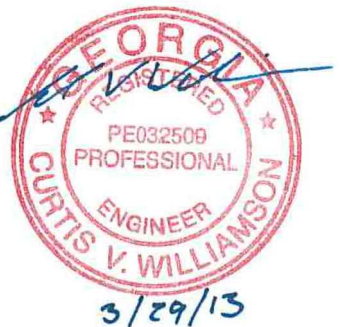
- 1 - LAB FAUCETS: REPLACE EXISTING LABORATORY FAUCETS WITH NEW. INSTALL ISOLATION VALVES ON HOT AND COLD WATER SUPPLY PIPING. INSTALL CHECK VALVE ON HOT WATER SUPPLY PIPING. ALL VALVES SHALL BE LOCATED IN ACCESSIBLE LOCATIONS.
- 2 - MOP SINK FAUCETS: INSTALL CHECK VALVE ON HOT WATER SUPPLY PIPING. ALL VALVES SHALL BE LOCATED IN ACCESSIBLE LOCATIONS.
- 3 - SHOWER VALVES: INSTALL CHECK VALVE ON HOT WATER SUPPLY PIPING. ALL VALVES SHALL BE LOCATED IN ACCESSIBLE LOCATIONS.
- 4 - SENSOR FAUCETS: INSTALL CHECK VALVE ON HOT WATER SUPPLY PIPING. ALL VALVES SHALL BE LOCATED IN ACCESSIBLE LOCATIONS.
- 5 - KNEE PEDAL CONTROL FAUCETS: INSTALL CHECK VALVE ON HOT WATER SUPPLY PIPING. ALL VALVES SHALL BE LOCATED IN ACCESSIBLE LOCATIONS.
- 6 - REMOVE EXISTING AERATORS, WHERE APPLICABLE, AND INSTALL LAMINAR FLOW END DEVICE ON ALL FAUCETS.
- 7 - INSTALL CHECK VALVES ON ALL HOT WATER MAINS AND HOT WATER RECIRCULATING MAINS AT EACH FLOOR. INSTALL NEW ISOLATION VALVE IF NO EXISTING ISOLATION VALVE IS INSTALLED.
- 8 - SURGEON'S SCRUB-IN SINK FAUCETS: REPLACE EXISTING FAUCETS, INCLUDING KNEE CONTROL FITTING AND GOOSENECK SPOUT, WITH NEW. INSTALL CHECK VALVE ON HOT WATER SUPPLY PIPING.
- 9 - LAVATORY FAUCETS: REPLACE EXISTING FAUCETS, INCLUDING FOOT CONTROL FITTING AND GOOSENECK SPOUT, WITH NEW SENSOR FAUCET. INSTALL CHECK VALVE ON HOT WATER SUPPLY PIPING.



ALL EXISTING CONDITIONS ARE FROM RECORD DRAWINGS.  
CONTRACTOR TO FIELD VERIFY ALL CONDITIONS PRIOR  
TO START OF CONSTRUCTION.

I.C. CLASS II  
THIRD FLOOR - A WING  
PLUMBING PLAN

0 1 2 4 8 16 24 FT.  
SCALE: 1/8"=1'-0"



		Drawn By: WBR				Project Title: Replace Water Lines – Phase 6 Building 801 – Downtown Division	Date: 03/29/13		
		Checked: CVW				Drawing Title: THIRD FLOOR – A WING PLUMBING PLAN	Project No. 509-10-124		Drawing No. P-14
									Dwg. 15 of 29
ISSUED FOR CONSTRUCTION	03/29/13								
Revisions:	Date:								