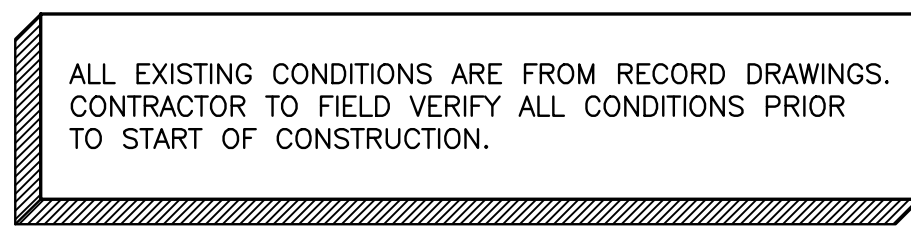
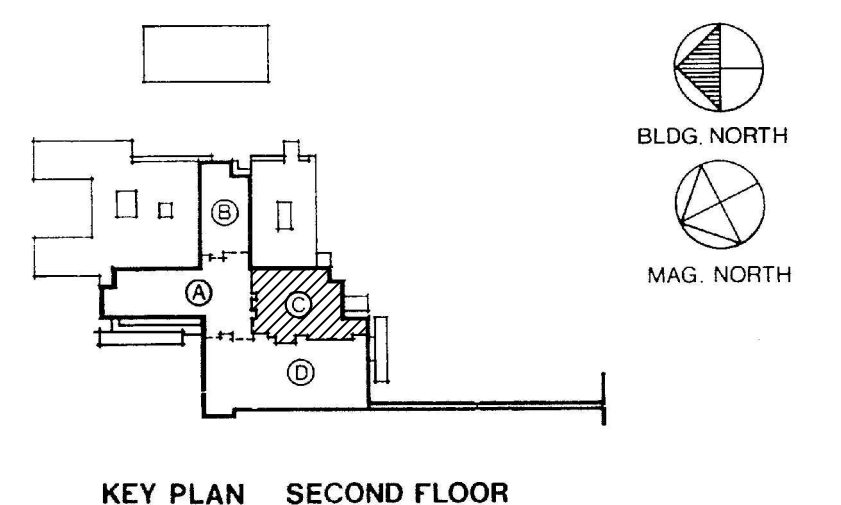



- ① - LAB FAUCETS: REPLACE EXISTING LABORATORY FAUCETS WITH NEW. INSTALL ISOLATION VALVES ON HOT AND COLD WATER SUPPLY PIPING. INSTALL CHECK VALVE ON HOT WATER SUPPLY PIPING. ISOLATION VALVES SHALL BE LOCATED IN ACCESSIBLE LOCATIONS.
- ② - MOP SINK FAUCETS: INSTALL CHECK VALVE ON HOT WATER SUPPLY PIPING. ALL VALVES SHALL BE LOCATED IN ACCESSIBLE LOCATIONS.
- ③ - SHOWER VALVES: INSTALL CHECK VALVE ON HOT WATER SUPPLY PIPING. ALL VALVES SHALL BE LOCATED IN ACCESSIBLE LOCATIONS.
- ④ - SENSOR FAUCETS: INSTALL CHECK VALVE ON HOT WATER SUPPLY PIPING. ALL VALVES SHALL BE LOCATED IN ACCESSIBLE LOCATIONS.
- ⑤ - KNEE PEDAL CONTROL FAUCETS: INSTALL CHECK VALVE ON HOT WATER SUPPLY PIPING. ALL VALVES SHALL BE LOCATED IN ACCESSIBLE LOCATIONS.
- ⑥ - REMOVE EXISTING AERATORS, WHERE APPLICABLE, AND INSTALL LAMINAR FLOW END DEVICE ON ALL FAUCETS.
- ⑦ - INSTALL CHECK VALVES ON ALL HOT WATER MAINS AND HOT WATER RECIRCULATING MAINS AT EACH FLOOR. INSTALL NEW ISOLATION VALVE IF NO EXISTING ISOLATION VALVE IS INSTALLED.



0 1 2 4 8 16 24 FT

SCALE: 1/8"=1'-0"



		<div>Drawn By: WBR</div> <div>Checked: CVW</div> <div></div> <div></div>		<div><div><div><div><div><div></div><div></div></div><div><div></div></div></div><div><div></div><div></div></div></div><div>JOHNSON, LASCHOBBER & ASSOCIATES, P.C. ARCHITECTS • ENGINEERS LANDSCAPE ARCHITECTS 1200 BRIDGEVIEW DRIVE, SUITE 100, ALBUQUERQUE, NM 87111 PHONE: (505) 724-5760 FAX: (505) 724-3955 WEBSITE: WWW.JLA-ARCH-ENR.COM</div></div></div>	<div>Date: 03/29/13</div> <div>Project No. 509-10-124</div>	<div></div> <div>Department of Veterans Affairs VAMC Augusta, Georgia Engineering Service (138)</div>
ISSUED FOR CONSTRUCTION	03/29/13				<div>Drawing Title: SECOND FLOOR - C WING PLUMBING PLAN</div>	<div>Drawing No. P-11</div> <div>Dwg. 12 of 29</div>
Revisions:	Date:					