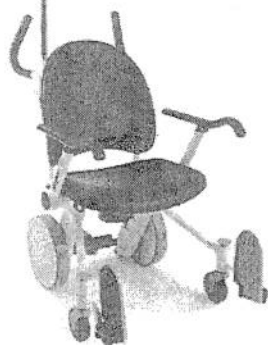


## Prime® TC Transport Chair



### Standard Features

- Stand Assist Armrests
- Flip-up Footrests
- BackSmart Push Handles
- One-touch central brake
- Anti-tip wheels
- Chart holder
- Molded plastic, seamless design
- Power-washable
- Rigid powder-coated steel frame
- Nesting design
- Yellow activation points
- Big Wheel maneuverability
- Non-removable parts

- Flip-up Footrests with Swing Away functionality (model 1460)
- Upright O<sub>2</sub> tank holder
- Chrome-plated, 1" thick IV pole
- IV pole topper available in six color options
- Foley bag hooks

### Specifications

Model Number	1450 (Fixed Flip-up Footrests)
	1460 (Swing Away Flip-up Footrests)
Overall Length	40.2" (102.1 cm)
Overall Width	28.3" (71.8 cm)
Seat Width	21.5" (54.6 cm)
Seat Height	
From Footrest	15" (38.1 cm)
From Floor	21" (53.3 cm)
Chair Height	
With IV Pole	73" (185.4 cm)
Without IV Pole	45" (114.3 cm)
Push Handle Grip Range	
Width	16"-20.5" (40.6-52.1 cm)
Height from Floor	35"-45" (88.9-114.3 cm)
Weight Capacity	500 lbs. (226.8 kg)

### Warranty

## The Stryker Prime TC Transport Chair



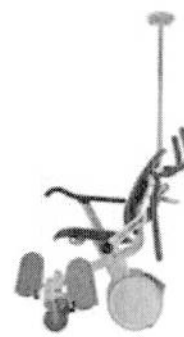
The prime TC Transport Chair



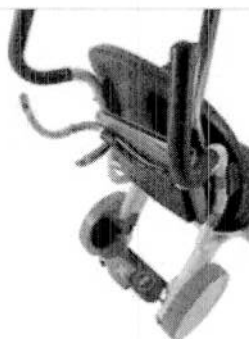
With Foot Supports down



Patient Access



Prime TC Side-View



Prime TC Upright O2 Tank Holder



Exclusive Stryker and Michael Graves design



The Prime TC accessories