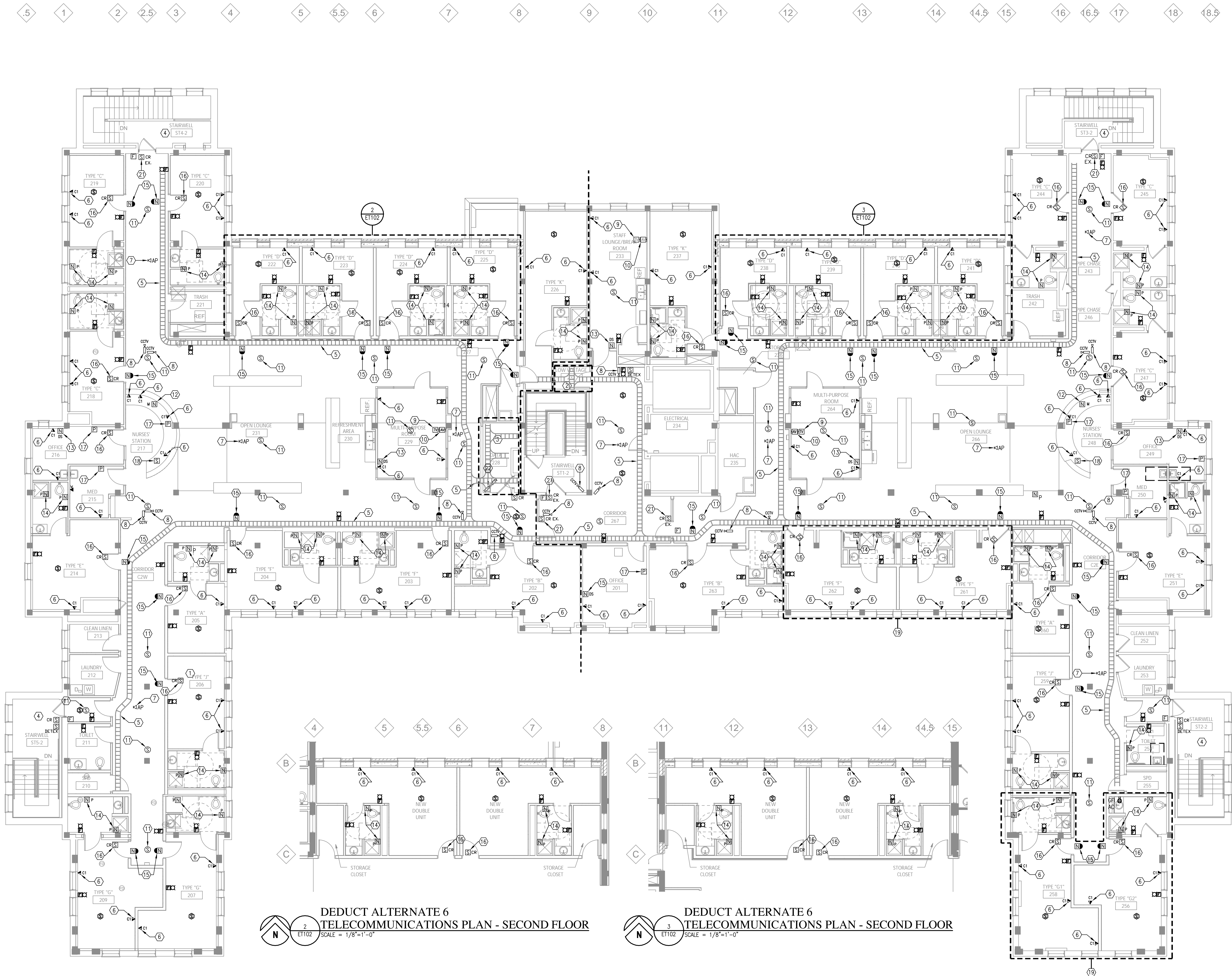


- B. SEAL ALL JOINTS/RACEWAY PENETRATIONS OF SMOKE OR FIRE RATED WALLS OR FLOORS WITH INTENSITUDE TYPE BARRIER.
- C. ALL CONDUITS, BACK BOXES, RACEWAYS, COVERPLATES, ETC. FOR VOICE, DATA, VIDEO, PAGING, NURSE CALL, CCTV AND CARD ACCESS OUTLETS ARE PROVIDED BY DIVISION 26 ELECTRICAL CONTRACTOR AS DESCRIBED IN SPECIFICATION SECTION 26 05 34 AND SHOWN ON ELECTRICAL POWER AND SYSTEMS PLAN AND DETAIL SHEETS.
- D. ALL TECHNOLOGY SYSTEMS CABLEING, DEVICES, EQUIPMENT INSTALLATION, CONNECTIONS AND TESTING FOR VOICE, DATA, VIDEO, PAGING, NURSE CALL, CCTV AND CARD ACCESS OUTLETS ARE TO BE PROVIDED BY A LICENSED LOW VOLTAGE/POWER LIMITED COMMUNICATIONS CONTRACTOR/SUBCONTRACTOR AS SHOWN ON TECHNOLOGY PLAN AND DETAIL SHEETS AND AS SPECIFIED IN DIVISION 27 SPECIFICATION.
- E. ALL NETWORK ELECTRONICS (SWITCHES, SERVERS, ROUTERS, ETC.) AND WIRELESS ACCESS POINTS REQUIRED TO ACTIVATE THE LAN/WAN DATA NETWORK ARE TO BE PROVIDED BY THE OWNER.
- F. PROVIDE PLENUM RATED WIRE FOR ALL TECHNOLOGY CABLEING REQUIRED TO DEVICES LOCATED ON TECHNOLOGY PLAN AND REFER TO TECHNOLOGY DETAIL SHEET AND DIVISION 27 SPECIFICATIONS.
- G. FOR EXACT LOCATION OF CEILING MOUNTED TECHNOLOGY DEVICES SEE ARCHITECTURAL REFLECTED CEILING PLAN. FOR WALL MOUNTED DEVICES REFER TO ARCHITECTURAL INTERIOR ELEVATIONS.
- H. TECHNOLOGY DEVICES EQUIPMENT, COMPONENTS, ETC SHOWN SHOWN LIGHTLY SHADED ARE EXISTING TO REMAIN UNLESS NOTED OTHERWISE. DEVICES, ETC SHOWN SOLID ARE NEW AND SHALL BE PROVIDED UNDER THIS CONTRACT.
- I. MODIFY EXISTING FIRE ALARM AND PAGING SYSTEMS FOR THE ADDITION OF NEW DEVICES. PROVIDE ALL PROGRAMMING AND COMPONENTS AS REQUIRED FOR A COMPLETE AND OPERATIONAL SYSTEM.
- J. CONTRACTOR SHALL REMOVE AND THEN REINSTALL CEILING TILES FOR HIS/HER WORK. PROVIDE ALL MATERIALS, SUPPLIES AND ADDITIONAL COST TO THE OWNER. REFER TO SPECIFICATION FOR FURTHER INFORMATION.
- K. WHERE NO CABLE TRAYS ARE SHOWN SUPPORT ALL CABLES EVERY 48"-60" USING APPROVED J-HOOK HANGERS AS DESCRIBED IN SECTION 27 13 00.
- L. ALL NEW TECHNOLOGY DEVICES SHALL BE INSTALLED ON EXISTING BLOCK WALLS SHALL BE INSTALLED IN SURFACE RACEWAY PROVIDED BY DIVISION 26 ELECTRICAL CONTRACTOR. TECHNICAL TECHNOLOGY CONTRACTOR IS RESPONSIBLE FOR PROVIDING COVERPLATES FOR TECHNOLOGY DEVICE MOUNTING.
- M. ALL NEW TECHNOLOGY DEVICES SHOWN TO BE INSTALLED ON EXISTING SHEET AND NEW ROCK WALLS SHALL BE FLUSH MOUNTED IN RECESSED BACKBOXES PROVIDED BY DIVISION 26 ELECTRICAL CONTRACTOR.
- N. PROVIDE NEW COMMUNICATIONS BACK IN NEW TELECOMMUNICATIONS ROOM, CATEGORY 6 PATCH PANELS AS REQUIRED TO TERMINATE ALL DATA OUTLETS, 110-STYE TERMINATION BLOCKS AS REQUIRED TO TERMINATE ALL VOICE OUTLETS, VERTICAL AND HORIZONTAL CABLE MANAGEMENT, POWER STRIPS, AND GROUND NEW COMMUNICATIONS RACK.
- O. PROVIDE NEW HORIZONTAL UTP CATEGORY 5e 50P COPPER CABLEING FOR ALL NEW TECHNOLOGY VOICE AND DATA OUTLETS, AND NURSE CALL, ROUTING TO NEW TELECOMMUNICATIONS ROOM, TERMINATE, AND TEST.
- P. PROVIDE NEW PLENUM RATED WIRING TO ALL NURSE CALL DEVICE LOCATIONS SHOWN AS REQUIRED. IN ACCORDANCE WITH ALL LOCAL MANUFACTURERS CABLEING REQUIREMENTS, TO NEW LOW VOLTAGE EQUIPMENT RACK.
- Q. PROVIDE NEW PLENUM RATED WIRING TO ALL CARD READER/CARD ACCESS DEVICE LOCATIONS SHOWN AND ROUTE TO CARD READER HANGING/CARD IN NEW LOW VOLTAGE EQUIPMENT ROOM.
- R. PROVIDE #6 AWG GREEN JACKETED COPPER GROUND WIRE BETWEEN THE TELECOMMUNICATIONS GROUNDING BUSBAR (TGB OR TGB) PROVIDED BY ELECTRICAL CONTRACTOR AND EACH VIDEO, PAGING, NURSE CALL AND WARE GROUNDING CONNECTION. REFER TO TECHNOLOGY DETAILS ON DIVISION 27 SPECIFICATIONS.

- ① RELOCATE EXISTING NURSE CALL HEADEND SYSTEM TO NEW LOW VOLTAGE ROOM 237. ELIMINATE ALL EXISTING CABLING AND INTEGRATE NEW NURSE CALL DEVICES AND ASSOCIATED CABLING TO RELOCATED EXISTING NURSE CALL HEADEND SYSTEM.
- ② NEW LOW VOLTAGE ROOM FOR EXISTING EXPANDED NURSE CALL, CCTV, AND CARD ACCESS HEADEND EQUIPMENT AND CABLE TERMINATION.
- ③ NEW TELECOMMUNICATIONS ROOM FOR TERMINATION OF CATEGORY 6 HORIZONTAL CABLING AND COPPER/FIBER BACKBONE CABLING TERMINATIONS. REFER TO ENLARGED FLOOR PLAN FOR ADDITIONAL INFORMATION.
- ④ NO WORK IN THIS AREA MAINTAIN EXISTING TECHNOLOGY UNLESS NOTED OTHERWISE.
- ⑤ CABLE TRAY ABOVE ACCESSIBLE CEILING PROVIDED BY ELECTRICAL FOR ROUTING LOW VOLTAGE CABLE. COORDINATE WITH ALL TRADES PRIOR TO CABLE INSTALLATION.
- ⑥ PROVIDE COMBINATION VOICE/DATA CATEGORY 6e CABLEING, DEVICE COMMUNICATIONS OUTLET AT LOCATION SHOWN AND ROUTE TO TELECOMMUNICATIONS ROOM (TR) ON SAME FLOOR. ELECTRICAL CONTRACTOR TO PROVIDE 3/4" CONDUIT TO EXISTING CABLE TRAY FROM DEVICE.
- ⑦ PROVIDE ONE (1) CATEGORY 5e CABLE TO CEILING MOUNTED WIRELESS ACCESS POINT OUTLET LOCATION SHOWN FOR CONNECTION TO FUTURE WIRELESS ACCESS POINT AND ROUTE TO TELECOMMUNICATIONS ROOM (TR) ON SAME FLOOR. ELECTRICAL CONTRACTOR TO PROVIDE 3/4" CONDUIT TO EXISTING CABLE TRAY FROM DEVICE. ELECTRICAL CONTRACTOR TO PROVIDE 3/4" CONDUIT TO EXISTING CABLE TRAY FROM DEVICE.
- ⑧ PROVIDE ONE (1) RG-6/U CABLE, BNC CONNECTOR AND FIXED ANALOG CCTV CAMERA AT LOCATION SHOWN. ELECTRICAL CONTRACTOR TO PROVIDE 3/4" CONDUIT TO EXISTING CABLE TRAY FROM DEVICE.
- ⑨ PROVIDE ONE (1) RG-6/U COAXIAL CABLE, F-TYPE CONNECTOR AND TELEVISION LCD MONITOR AT TV OUTLET TO LOCATION SHOWN. ELECTRICAL CONTRACTOR TO PROVIDE 3/4" CONDUIT TO EXISTING CABLE TRAY FROM DEVICE.
- ⑩ PROVIDE LOW AUDIO/VISUAL OUTLET WITH HDMI, VGA, C-VIDEO, AUDIO L/R CABLES ROUTED TO TV OUTLET FOR CONNECTION OF OTHER EQUIPMENT TO TV MONITOR. ELECTRICAL CONTRACTOR TO PROVIDE (2) 1" CONDUITS TO EXISTING CABLE TRAY FROM DEVICE.
- ⑪ PROVIDE NEW CEILING MOUNTED FIRE ALARM SPEAKER/INTERCOM (PAGING) SPEAKER (SPEAKER BY DIVISION 28) AND TWO INTO EXISTING FIRE ALARM AND INTERCOM (PAGING) SYSTEMS. REFER TO SPECIFICATIONS AND ELECTRICAL DETAILS FOR FURTHER INFORMATION.
- ⑫ PROVIDE NURSE CALL MASTER STATION AT LOCATION SHOWN AND ROUTE CABLING TO NURSE CALL HEADEND IN LOW VOLTAGE EQUIPMENT ROOM AND TERMINATE.
- ⑬ PROVIDE NURSE CALL DUTY STATION AT LOCATION SHOWN AND ROUTE CABLING TO NURSE CALL HEADEND IN LOW VOLTAGE EQUIPMENT ROOM AND TERMINATE.
- ⑭ PROVIDE NURSE CALL PULL-STATION AT LOCATION SHOWN AND ROUTE CABLING TO NURSE CALL HEADEND IN LOW VOLTAGE EQUIPMENT ROOM AND TERMINATE.
- ⑮ PROVIDE NURSE CALL HOME LIGHT ABOVE DOOR AT LOCATION SHOWN AND ROUTE CABLING TO NURSE CALL HEADEND IN LOW VOLTAGE EQUIPMENT ROOM AND TERMINATE.
- ⑯ PROVIDE INTEGRATED DOOR MOUNTED STANDBY-ALONE BATTERY OPERATED CARD READER AT EACH DOOR LOCATION SHOWN THAT CONNECT VIA WIRELESS COMMUNICATION TO CARD ACCESS SYSTEM IN LOW VOLTAGE EQUIPMENT ROOM.
- ⑰ PROVIDE PANIC BUTTON CONNECTED TO SECURITY SYSTEM AND INTEGRATED WITH CAMPUS-WIDE SECURITY SYSTEM TO SIGNAL MAIN SECURITY STATION IN ROOM 68.
- ⑱ PROVIDE REMOTE MONITOR STATION FOR CCTV SURVEILLANCE SYSTEM AT LOCATION SHOWN.
- ⑲ UNDER ALTERNATE AREA SHOWN IS TO REMAIN AS-IS. REFER TO DEMOLITION PLANS FOR EXISTING DEVICE LOCATIONS. REWIRE ALL EXISTING SYSTEMS AND PROVIDE NEW DEVICES FOR DATA, TELEPHONE, SECURITY, AND NURSE CALL.
- ⑳ UNDER ALTERNATE #4 PROVIDE ONLY WORK SHOWN IN DETAILS 2 AND 3 ON THIS SHEET.
- ㉑ RETAIN EXISTING CARD READERS AND CARD ACCESS DEVICES FROM DEMOLITION AND REINSTALL AT LOCATION SHOWN.
- ㉒ APC (AMERICAN POWER CONVERSION) NETBOTZ ROOM MONITOR - MODEL 355 OR APPROVED EQUIV. PROVIDE DATA CONNECTION TO THE CAMERA

1	UPDATED RM 228 CAMERA (Amendment No3)	5/30/14
No	REVISION	DATE



DEDUCT ALTERNATE 6
TELECOMMUNICATIONS PLAN - SECOND FLOOR
N 2 ET102 SCALE = 1/8"=1'-0"


 DEDUCT ALTERNATE 6
 3 TELECOMMUNICATIONS PLAN - SECOND FLOOR
 ET102 SCALE = 1/8"=1'-0"

TELECOMMUNICATIONS PLAN - SECOND FLOOR

100% CD SET



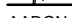
Alexandria Office	St. Cloud Office
120 17th Avenue W.	3339 West St. Germain, Suite 250
Alexandria, MN 56308	St. Cloud, MN 56301
(320) 762-1290	(320) 217-5557



Alexandria
525 Broadway Street
Alexandria, MN 56308
phone 320.759.9030
facsimile 320.759.9062
www.jlgarchitects.com
copyright © 2013

DTE 02212001

STAMPING:
I HEREBY CERTIFY THAT THIS PLAN, SPECIFICATION OR REPORT WAS PREPARED BY ME OR UNDER MY DIRECT SUPERVISION, AND THAT I AM A DULY LICENSED PROFESSIONAL ENGINEER UNDER THE LAWS OF THE STATE OF MINNESOTA.

 MN 4611

AARON R. MUELLER, PE REG. N

DATE: 12-20-2013

DRAWING TITLE	
TELECOMMUNICATIONS PLAN - SECOND FLOOR	
APPROVED: PROJECT DIRECTOR	DATE:

PROJECT TITLE RECONFIGURE/EXPAND BUILDINGS 28 & 9 RESIDENTIAL REHABILITATION TREATMENT PROGRAM		
BUILDING No 28	CHECKED BY ARM	TRAIN CAB/DL
LOCATION SOUTH VA MEDICAL CENTER		

DATE 2/20/2013	
PRINT SIZE IS NOTED	
CHECK NO. 56-12-339	
D FILE	
AWAY NO.	