

AREAS - BASEMENT										
NO.	Name	Area	Area Use Group	Occupancy Type	Use Group Area	OCC LOAD	STAIRWAY FACTOR	REQ'D STAIRWAY WIDTH	EGRESS WIDTH FACTOR	REQ'D EGRESS WIDTH
001	STAIR A	292 SF	(none)	(none)			0.3		0.2	
002	STAIR B	292 SF	(none)	(none)			0.3		0.2	
003	BASEMENT CIRCULATION	6711 SF	(none)	(none)			0.3		0.2	
003	STAIR C	269 SF	(none)	(none)			0.3		0.2	
004	STAIR D	269 SF	(none)	(none)			0.3		0.2	
005	EX. OFFICE	1642 SF	B	BUSINESS AREA	100	17	0.3	5 1/16"	0.2	3 3/8"
006	EX. OFFICE	581 SF	B	BUSINESS AREA	100	6	0.3	1 29/32"	0.2	1 1/4"
007	WEST BASEMENT OFFICE	1184 SF	B	BUSINESS AREA	100	12	0.3	3 23/32"	0.2	2 15/32"
008	MECHANICAL	455 SF	S-1	ACCESSORY STORAGE, MECH EQUIPMENT ROOM	300	2	0.3	19/32"	0.2	13/32"
009	MECHANICAL	1395 SF	S-1	ACCESSORY STORAGE, MECH EQUIPMENT ROOM	300	5	0.3	1 17/32"	0.2	1 1/32"
010	EAST BASEMENT OFFICE	1833 SF	B	BUSINESS AREA	100	19	0.3	5 21/32"	0.2	3 25/32"
011	EX. OFFICE	584 SF	B	BUSINESS AREA	100	6	0.3	1 29/32"	0.2	1 9/32"
012	EX. OFFICE	263 SF	B	BUSINESS AREA	100	3	0.3	15/16"	0.2	5/8"
013	EX. OFFICE	270 SF	B	BUSINESS AREA	100	3	0.3	31/32"	0.2	5/8"
014	EX. OFFICE	1561 SF	B	BUSINESS AREA	100	16	0.3	4 27/32"	0.2	3 7/32"
015	EX. OFFICE	412 SF	B	BUSINESS AREA	100	5	0.3	1 3/8"	0.2	15/16"
016	EX. OFFICE	1197 SF	B	BUSINESS AREA	100	12	0.3	3 3/4"	0.2	2 1/2"
017	EX. OFFICE	1996 SF	B	BUSINESS AREA	100	20	0.3	6 1/8"	0.2	4 3/32"
018	EX. OFFICE	215 SF	B	BUSINESS AREA	100	3	0.3	25/32"	0.2	17/32"
019	MECH	143 SF	B	ACCESSORY STORAGE, MECH EQUIPMENT ROOM	300	1	0.3	9/32"	0.2	3/16"
020	OFFICES	287 SF	B	BUSINESS AREA	100	3	0.3	1"	0.2	11/16"
					21851 SF	133	PROVIDED:	40 15/32"	26 31/32"	228"

AREAS - LEVEL 1										
NO	Name	Area	Area Use Group	Occupancy Type	Use Group Area	OCC LOAD	STAIRWAY FACTOR	REQ'D STAIRWAY WIDTH	EGRESS WIDTH	REQ'D EGRESS WIDTH
101	STAIR A	298 SF	(none)	(none)			0.3		0.2	
102	STAIR B	298 SF	(none)	(none)			0.3		0.2	
103	STAIR C	267 SF	(none)	(none)			0.3		0.2	
104	STAIR D	267 SF	(none)	(none)			0.3		0.2	
105	OFFICES	615 SF	B	BUSINESS AREA	100	7	0.3	2"	0.2	1 11/32"
106	CIRCULATION	5629 SF	(none)	(none)			0.3		0.2	
107	WEST OFFICE	1592 SF	B	BUSINESS AREA	100	16	0.3	4 15/16"	0.2	3 9/32"
108	OFFICES	1095 SF	B	BUSINESS AREA	100	11	0.3	3 7/16"	0.2	2 9/32"
109	SUPPORT	85 SF	(none)	ACCESSORY STORAGE, MECH EQUIPMENT ROOM	300	1	0.3	1/4"	0.2	5/32"
110	EAST OFFICE	1854 SF	B	BUSINESS AREA	100	19	0.3	5 23/32"	0.2	3 13/16"
111	OFFICES	478 SF	B	BUSINESS AREA	100	5	0.3	1 19/32"	0.2	1 1/16"
112	OFFICES	631 SF	B	BUSINESS AREA	100	7	0.3	2 1/32"	0.2	1 3/8"
113	OFFICES	627 SF	B	BUSINESS AREA	100	7	0.3	2 1/32"	0.2	1 11/32"
115	OFFICES	697 SF	B	BUSINESS AREA	100	7	0.3	2 1/4"	0.2	1 1/2"
116	OFFICES	921 SF	B	BUSINESS AREA	100	10	0.3	2 29/32"	0.2	1 15/16"
117	OFFICES	431 SF	B	BUSINESS AREA	100	5	0.3	1 7/16"	0.2	31/32"
118	OFFICES	1017 SF	B	BUSINESS AREA	100	11	0.3	3 3/16"	0.2	2 1/8"
119	OPEN OFFICE	2097 SF	B	BUSINESS AREA	100	21	0.3	6 7/16"	0.2	4 9/32"
120	OPEN OFFICE	573 SF	B	BUSINESS AREA	100	6	0.3	1 7/8"	0.2	1 1/4"
121	GROUP ROOM	638 SF	B	BUSINESS AREA	100	7	0.3	2 1/16"	0.2	1 3/8"
123	OFFICE	195 SF	B	BUSINESS AREA	100	2	0.3	3/4"	0.2	1/2"
124	OFFICE	216 SF	B	BUSINESS AREA	100	3	0.3	25/32"	0.2	17/32"
					20519 SF	145	43 21/32" PROVIDED:		29 1/8" 228"	

AREAS - LEVEL 2										
No.	Name	Area	Area Use Group	Occupancy Type	Use Group Area	Occ Load	STAIRWAY FACTOR	REQ'D STAIRWAY WIDTH	EGRESS WIDTH FACTOR	EGRESS WIDTH REQ'D
201	STAIR A	298 SF	(none)	(none)			0.3		0.2	
202	STAIR B	298 SF	(none)	(none)			0.3		0.2	
203	STAIR C	267 SF	(none)	(none)			0.3		0.2	
204	STAIR D	267 SF	(none)	(none)			0.3		0.2	
205	PATIENT UNITS	604 SF	I-2	INSTITUTIONAL AREA - SLEEPING	120	6	0.3	1 21/32"	0.2	1 3/32"
206	TRASH	83 SF	ACCESSORY USE	ACCESSORY STORAGE, MECH EQUIPMENT ROOM	300	1	0.3	7/32"	0.2	5/32"
207	PATIENT UNITS	1765 SF	I-2	INSTITUTIONAL AREA - SLEEPING	120	15	0.3	4 9/16"	0.2	3 1/32"
208	STORAGE	33 SF	ACCESSORY USE	ACCESSORY STORAGE, MECH EQUIPMENT ROOM	300	1	0.3	3/16"	0.2	1/8"
209	OFFICE	310 SF	B	BUSINESS AREA	100	4	0.3	1 3/32"	0.2	23/32"
210	PATIENT UNITS	1758 SF	I-2	INSTITUTIONAL AREA - SLEEPING	120	15	0.3	4 17/32"	0.2	3 1/32"
211	TRASH	96 SF	ACCESSORY USE	ACCESSORY STORAGE, MECH EQUIPMENT ROOM	300	1	0.3	1/4"	0.2	5/32"
212	PATIENT UNITS	618 SF	I-2	INSTITUTIONAL AREA - SLEEPING	120	6	0.3	1 11/16"	0.2	1 1/8"
213	OFFICES	278 SF	B	BUSINESS AREA	100	3	0.3	1"	0.2	21/32"
214	COMMON AREA	984 SF	A-3	ASSEMBLY - W/O FIXED SEATING - UNCONCENTRATED	15	66	0.3	19 13/16"	0.2	13 7/32"
215	STORAGE	73 SF	ACCESSORY USE	ACCESSORY STORAGE, MECH EQUIPMENT ROOM	300	1	0.3	7/32"	0.2	5/32"
216	ELEC	83 SF	ACCESSORY USE	ACCESSORY STORAGE, MECH EQUIPMENT ROOM	300	1	0.3	7/32"	0.2	5/32"
218	DATA	40 SF	ACCESSORY USE	ACCESSORY STORAGE, MECH EQUIPMENT ROOM	300	1	0.3	3/16"	0.2	1/8"
220	STORAGE	109 SF	(none)	ACCESSORY STORAGE, MECH EQUIPMENT ROOM	300	1	0.3	1/4"	0.2	3/16"
221	COMMON AREA	970 SF	A-3	ASSEMBLY - W/O FIXED SEATING - UNCONCENTRATED	15	65	0.3	19 9/16"	0.2	13 1/32"
222	OFFICES	279 SF	B	BUSINESS AREA	100	3	0.3	1"	0.2	21/32"
223	PATIENT UNIT	354 SF	I-2	INSTITUTIONAL AREA - SLEEPING	120	3	0.3	1 1/32"	0.2	11/16"
224	OFFICE	208 SF	B	BUSINESS AREA	100	3	0.3	25/32"	0.2	1/2"
225	PATIENT UNIT	382 SF	I-2	INSTITUTIONAL AREA - SLEEPING	120	4	0.3	1 3/32"	0.2	3/4"
226	LINEN	62 SF	ACCESSORY USE	ACCESSORY STORAGE, MECH EQUIPMENT ROOM	300	1	0.3	7/32"	0.2	5/32"
227	LAUNDRY	83 SF	ACCESSORY USE	ACCESSORY STORAGE, MECH EQUIPMENT ROOM	300	1	0.3	7/32"	0.2	5/32"
228	STORAGE	42 SF	ACCESSORY USE	ACCESSORY STORAGE, MECH EQUIPMENT ROOM	300	1	0.3	3/16"	0.2	1/8"
229	PATIENT UNITS	2490 SF	I-2	INSTITUTIONAL AREA - SLEEPING	120	21	0.3	6 3/8"	0.2	4 1/4"
230	PATIENT UNITS	2575 SF	I-2	INSTITUTIONAL AREA - SLEEPING	120	22	0.3	6 19/32"	0.2	4 13/32"
231	LINEN	58 SF	ACCESSORY USE	ACCESSORY STORAGE, MECH EQUIPMENT ROOM	300	1	0.3	7/32"	0.2	1/8"
232	LAUNDRY	88 SF	ACCESSORY USE	ACCESSORY STORAGE, MECH EQUIPMENT ROOM	300	1	0.3	1/4"	0.2	5/32"
233	STORAGE	42 SF	ACCESSORY USE	ACCESSORY STORAGE, MECH EQUIPMENT ROOM	300	1	0.3	3/16"	0.2	1/8"
234	CIRCULATION	6440 SF	(none)	(none)						
					22035 SF	249	PROVIDED:	73 19/32"		49 1/16"
								192"		186"

Travel Distances	
Path ID	Travel Distance
007	0'
008	96'
010a	168'
010b	55'
107	135'
110a	154'
110b	121'
200a	165'
200b	30'

Travel Distances	
Path ID	Travel Distance
207	144'
209	65'
210	135'
213	71'
222	74'
229a	56'
229b	131'
230a	135'
230b	53'
Grand total:	1815'
101	

CODE PLAN GENERAL NOTES

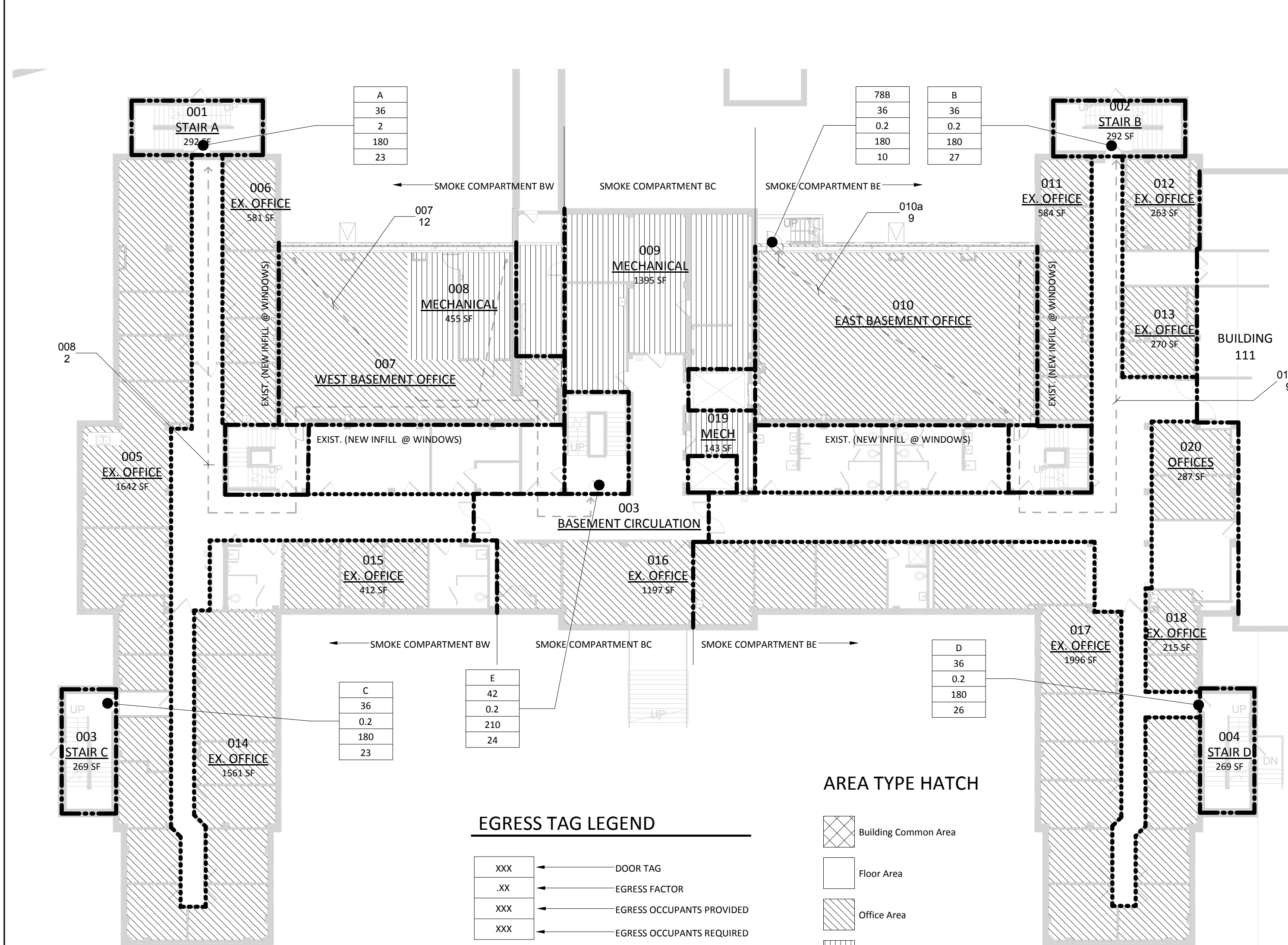
- MAXIMUM TRAVEL DISTANCE = 200'
- MAXIMUM COMMON PATH OF TRAVEL DISTANCE = 75'
- ALLOWED DEADEND CORRIDOR = 50'
- MAXIMUM SMOKE COMPARTMENT = 22,500 SF
- CORRIDOR WALLS TO TERMINATE AT UNDERSIDE OF FLOOR STRUCTURE AND BE BUILT AS 1-HOUR RATED CONSTRUCTION (20-MINUTE DOORS, NO CLOSERS INSTALLED ON DOORS AT THIS TIME).
- ALL FLOOR TO BE CONSTRUCTED AS 2 HOUR SMOKE BARRIERS.

CODE PLAN LEGEND

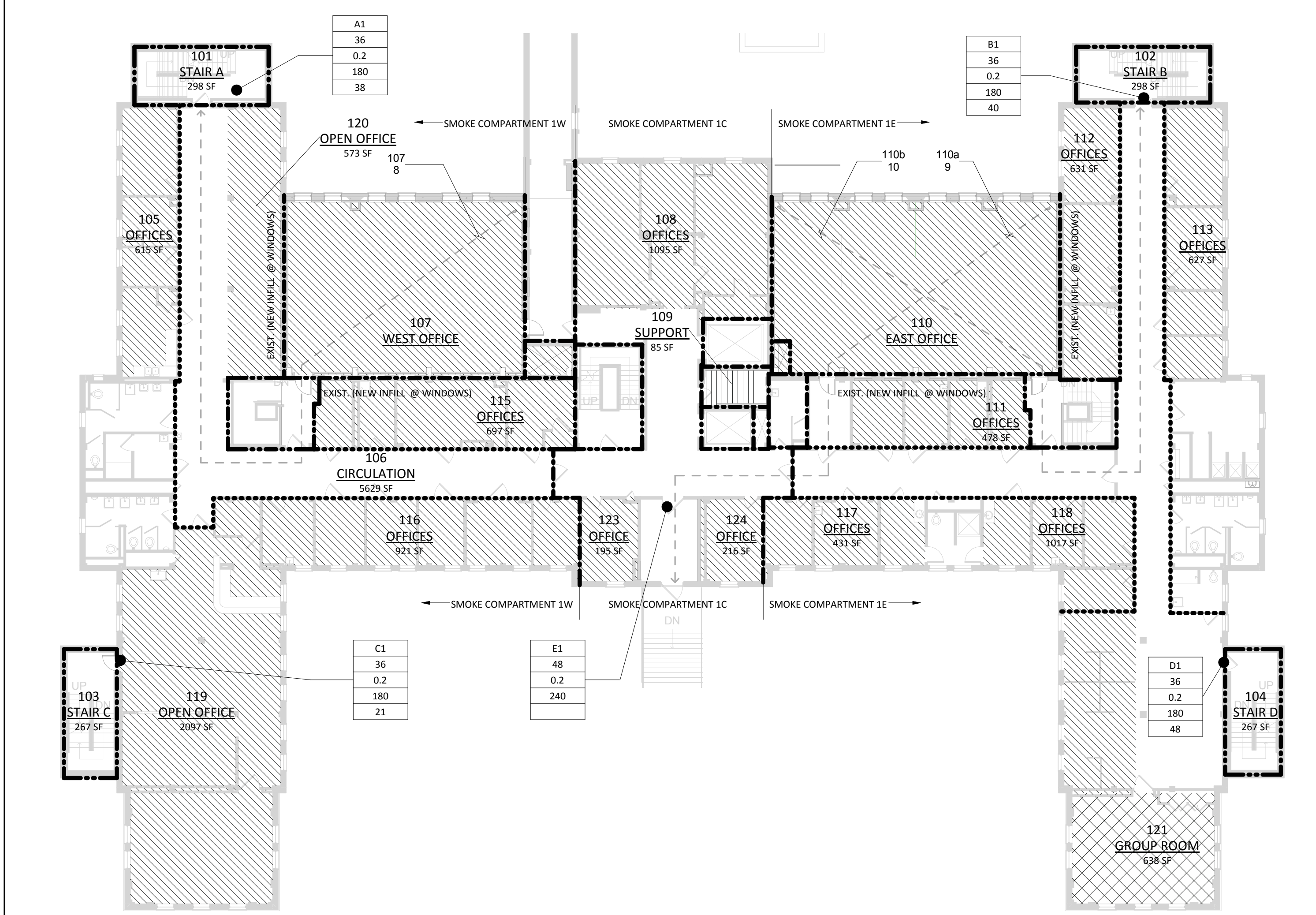
- 2 HOUR FIRE BARRIER
- 1 HOUR SMOKE BARRIER
- 1 HOUR SMOKE BARRIER AT SMOKE COMPARTMENT WALL
- SMOKE PARTITION
- TRAVEL DISTANCE

CODE SUMMARY

- APPLICABLE CODES & STANDARDS:
 - DEPT. OF VETERANS AFFAIRS - DESIGN MANUALS & STANDARDS
 - 2009 NFPA 101 LIFE SAFETY CODE
 - 2009 INTERNATIONAL BUILDING CODE (IBC)
 - UNIFORM FEDERAL ACCESSIBILITY STANDARDS (UFAS) - INCLUDING VA SUPPLEMENT, BARRIER FREE DESIGN
 - ENERGY POLICY ACT OF 2005 (EPAC)
 - 2009 NFPA NATIONAL FIRE CODES WITH THE EXCEPTION OF NFPA 5000 AND NFPA 900
 - 2012 NATIONAL ELECTRICAL CODE (NEC)
 - 2009 NATIONAL STANDARD PLUMBING CODE
 - 2009 INTERNATIONAL MECHANICAL CODE
 - 2009 INTERNATIONAL FUEL GAS CODE
 - OCCUPATIONAL SAFETY AND HEALTH ADMINISTRATION (OSHA) STANDARDS
 - GUIDELINES FOR DESIGN AND CONSTRUCTION OF HOSPITAL & HEALTHCARE FACILITIES
- 2006
- LOCAL CODES: AS AN AGENCY OF THE FEDERAL GOVERNMENT, THE VA IS NOT SUBJECT TO LOCAL IMPOSITION OF CODE REINFORCEMENT PROCEDURES.
- OCCUPANCY GROUP CLASSIFICATION:
 - NEW HEALTH CARE (NHPA)
 - INSTITUTIONAL GROUP I-1 (IBC)
- TYPE OF CONSTRUCTION:
 - TYPE II (222) - (NHPA)
 - II (IBC)
- NUMBER OF STORIES:
 - 3
- SQUARE FOOTAGE/HEIGHT:
 - 54,405 SF
- OCCUPANT LOAD:
 - 527
- EXITS REQUIRED:
 - 4
- EXITS PROVIDED:
 - 5
- SMOKE DETECTION:
 - PER 2009 NFPA 101 LIFE SAFETY CODE
- FIRE PROTECTION:
 - FULLY SPRINKLED - QUICK RESPONSE



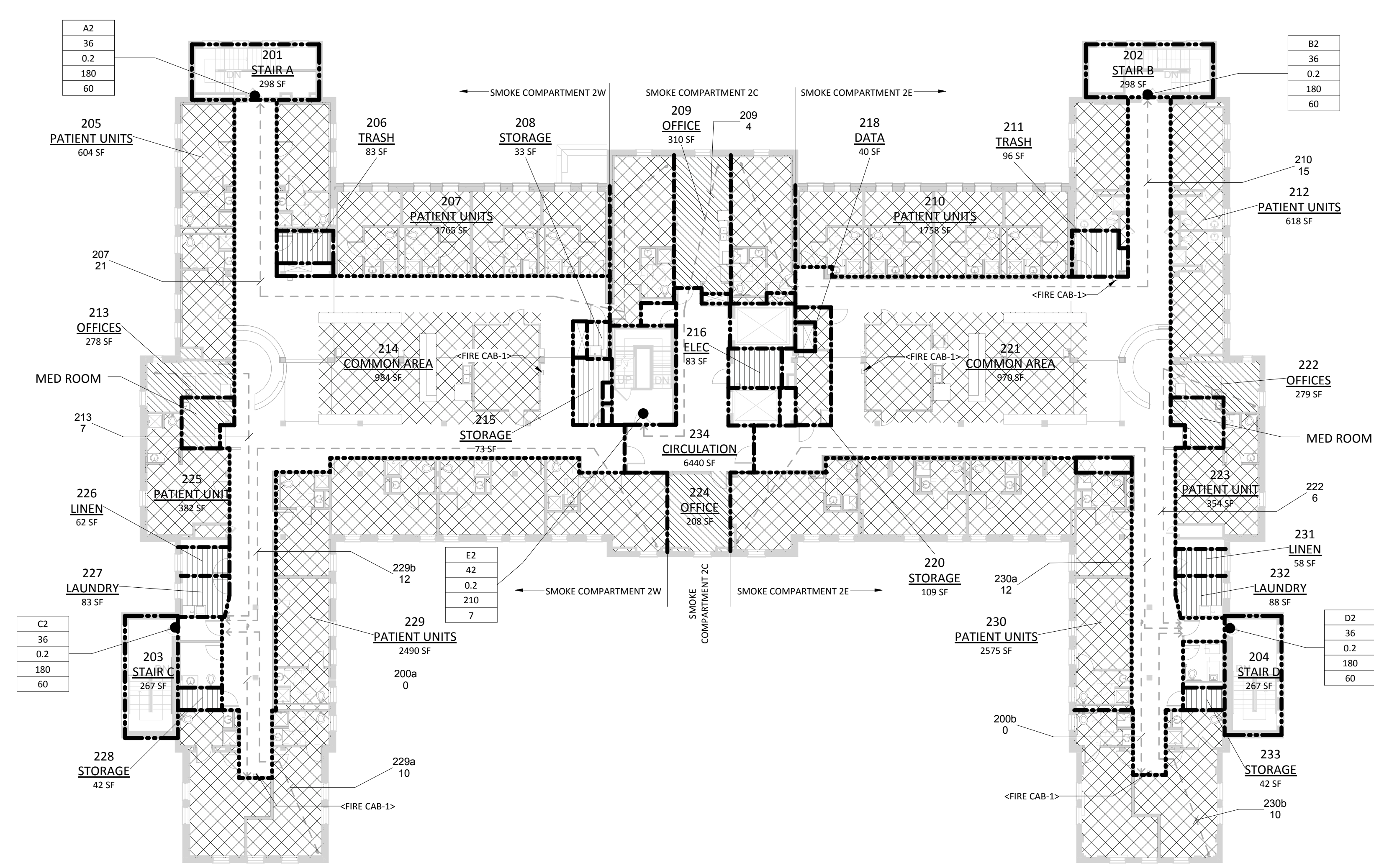
5 BASEMENT
1/16" = 1'-0"



1 FIRST FLOOR
1/16" = 1'-0"

Amendment No3		7.30.14
No	REVISION	DATE

VA FORM 28-6231



2 SECOND FLOOR
1/16" = 1'-0"

I HAVE REVIEWED THE ATTACHED CODE PLAN AND
WARRANTED TO BE IN GENERAL CONFORMANCE
WITH THE CODES AND STANDARDS LISTED AND THAT
I AM A QUALIFIED FIRE PROTECTION ENGINEER
UNDER THE LAWS OF THE STATE OF MINNESOTA

Lewis E. Anderson
LEWIS E. ANDERSON, PE REG. NO.
DATE: 12-31-2013



Alexandria
525 Broadway Street
Alexandria, MN 56308
phone 320.759.9300
facsimile 320.759.9306
www.jlgarchitects.com
copyright © 2013

JLG 11129

STAMPED:
DESIGNED BY: [Signature]
CHECKED BY: [Signature]
DATE: 12-20-2013

DRAWING TITLE
CODE SHEET

PROJECT TITLE
RECONFIGURE/EXPAND
BUILDINGS 28 & 9 FOR
RESIDENTIAL REHABILITATION
TREATMENT PROGRAM

DATE: 12.20.13
PROJECT NO: 656-12-339
DRAWING NO: G1001



100% CD SET

FOR CONSTRUCTION