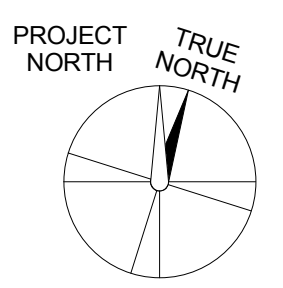


1 LEVEL 1 EQUIPMENT PLAN
1/4" = 1'-0"



DEDUCTIVE ALTERNATE #11: REDUCTION OF WET LAB AREA @ 1ST FLOOR LEVEL
ADD DOORS IN EAST HALLWAY FOR SECURITY AND DOOR TO SMALL T.C. ROOM
DOORS USED FOR THIS DEDUCTIVE ALTERNATE AS INDICATED ON SHEETS AS1-11b AND AS1-21b, ARE TO BE THE DOORS IN THE SAME LOCATION AS SCHEDULED ON THIS SHEET.

DOOR SCHEDULE - N.I.C. DOORS IN DEMOUNTABLE WALLS @ LEVEL 1																							
ROOM NAME	OPENING NUMBER	FURNISHED & INSTALLED	ASSEMBLY RATING	DOOR								FRAME							HARDWARE	DETAILS			
				TYPE	DOOR PANEL		HEIGHT	MATL	FINISH	GLAZING	FRAME CONSTRUCTION	FRAME DEPTH	FRAME WIDTH - OVERALL	FRAME WIDTH HINGE SIDE	FRAME WIDTH LOCK SIDE	FRAME WIDTH HEAD	HEAD	JAMB		SILL	NOTES		
					WIDTH ACTIVE	WIDTH INACTIVE																	
NORTH HALLWAY	G102	VV	NR	D1	3' - 0"		7' - 0"	ALUM	ANODIZED	GL-5	WRAP	6 1/4"	3' - 4"	2"	2"	2"	2,4,7,10,13	1A/AS6-12	1B/AS6-12		CLEAR GLASS		
T.C. SMALL	G104	VV	NR	AS	4' - 1 1/4"		7' - 0"	ALUM	ANODIZED		WRAP	6 1/4"	4' - 2 1/2"	2"	2"	4"	9	3A/AS6-12	3B/AS6-12	3C/AS6-12			
T.C. LARGE	G106.1	VV	NR	AS	4' - 1 1/4"		7' - 0"	ALUM	ANODIZED		WRAP	6 1/4"	4' - 2 1/2"	2"	2"	4"	9	3A/AS6-12	3B/AS6-12	3C/AS6-12			
T.C. LARGE	G106.2	VV	NR	AS	4' - 1 1/4"		7' - 0"	ALUM	ANODIZED		WRAP	6 1/4"	4' - 2 1/2"	2"	2"	4"	9	3A/AS6-12	3B/AS6-12	3C/AS6-12			
SOUTH HALLWAY	G108	VV	NR	BA	3' - 0"	1' - 6"	7' - 0"	ALUM	ANODIZED	GL-5	WRAP	6 1/4"	4' - 10"	2"		2"	2,4,7,8B,10	1A/AS6-12	1B/AS6-12				
FLEX / DARK LAB	G111	VV	NR	AS	4' - 1 1/4"		7' - 0"	ALUM	ANODIZED		WRAP	6 1/4"	4' - 2 1/2"	2"	2"	4"	9	3A/AS6-12	3B/AS6-12	3C/AS6-12			
F.S. RISER	G115	VV	NR	A	3' - 0"		7' - 0"	ALUM	ANODIZED		WRAP	6 1/4"	3' - 4"	2"	2"	2"	3,4,10,13	1A/AS6-12	1B/AS6-12				

ARCHITECT/ENGINEERS:



251 Post Street, Suite 620
San Francisco, CA 94108-5017
Tel 415 989 6400, Fax 415 989 3056
www.HilliardArchitects.com

Drawing Title
**EQUIPMENT & MOVEABLE WALL
PLAN - LEVEL 1**

Approved: Project Director

Project Title
**GENOMICS CLINICAL
RESEARCH CENTER,
PALO ALTO**

Location
VAPAHCS - PALO ALTO

Date
06/20/2014

Checked
HA

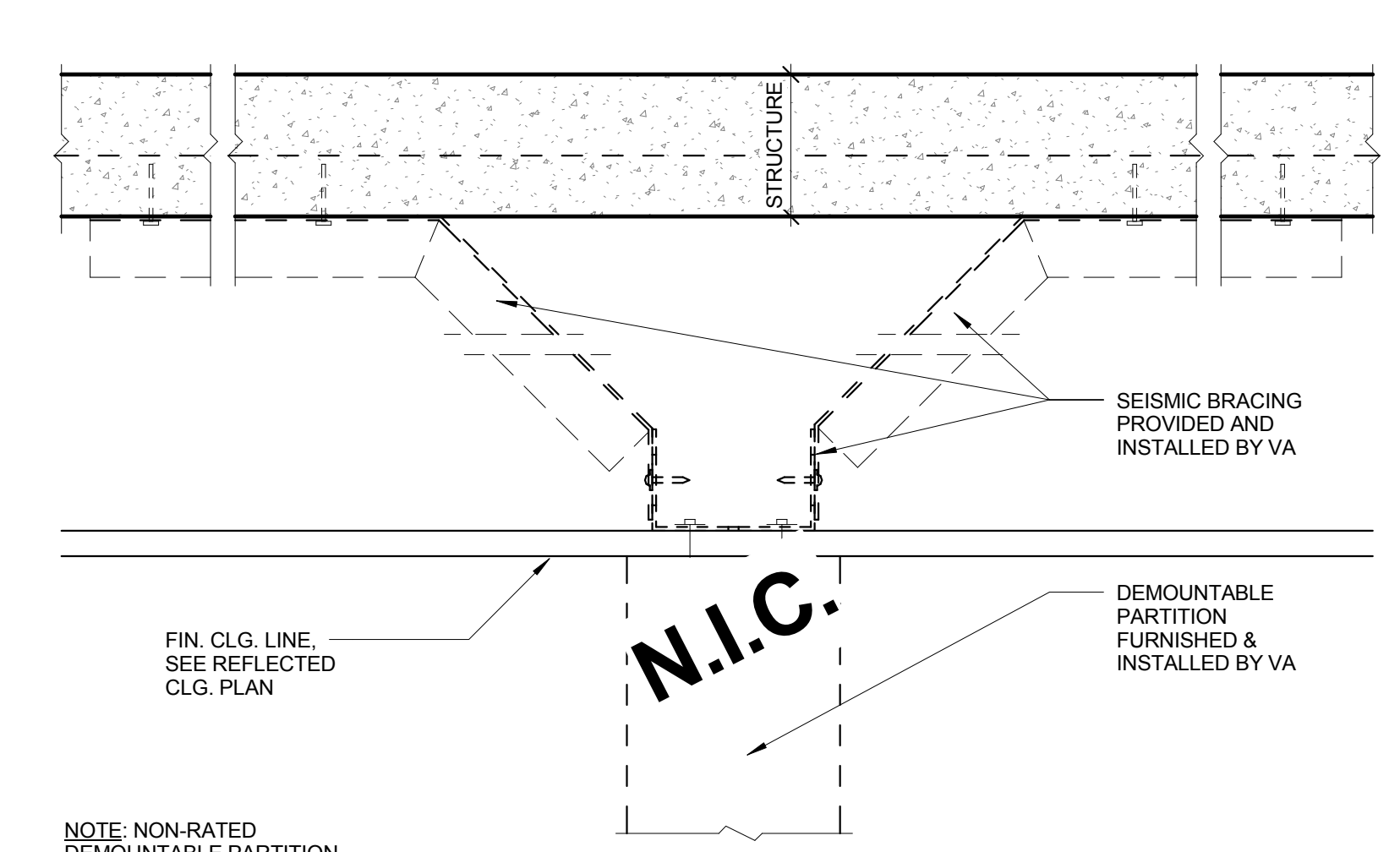
Project Number
640-389

Building Number
51

Drawing Number
AS7-16

Office of
Construction
and Facilities
Management

Department of
Veterans Affairs



DEMOUNTABLE PARTITION
BRACING
3" = 1'-0"

N.I.C. INTERIOR WALL TYPE

PD PARTITION - DEMOUNTABLE

FURNISHED BY VA (VENDOR) AND INSTALLED BY VA (VENDOR)

PLAN VIEW SYMBOL

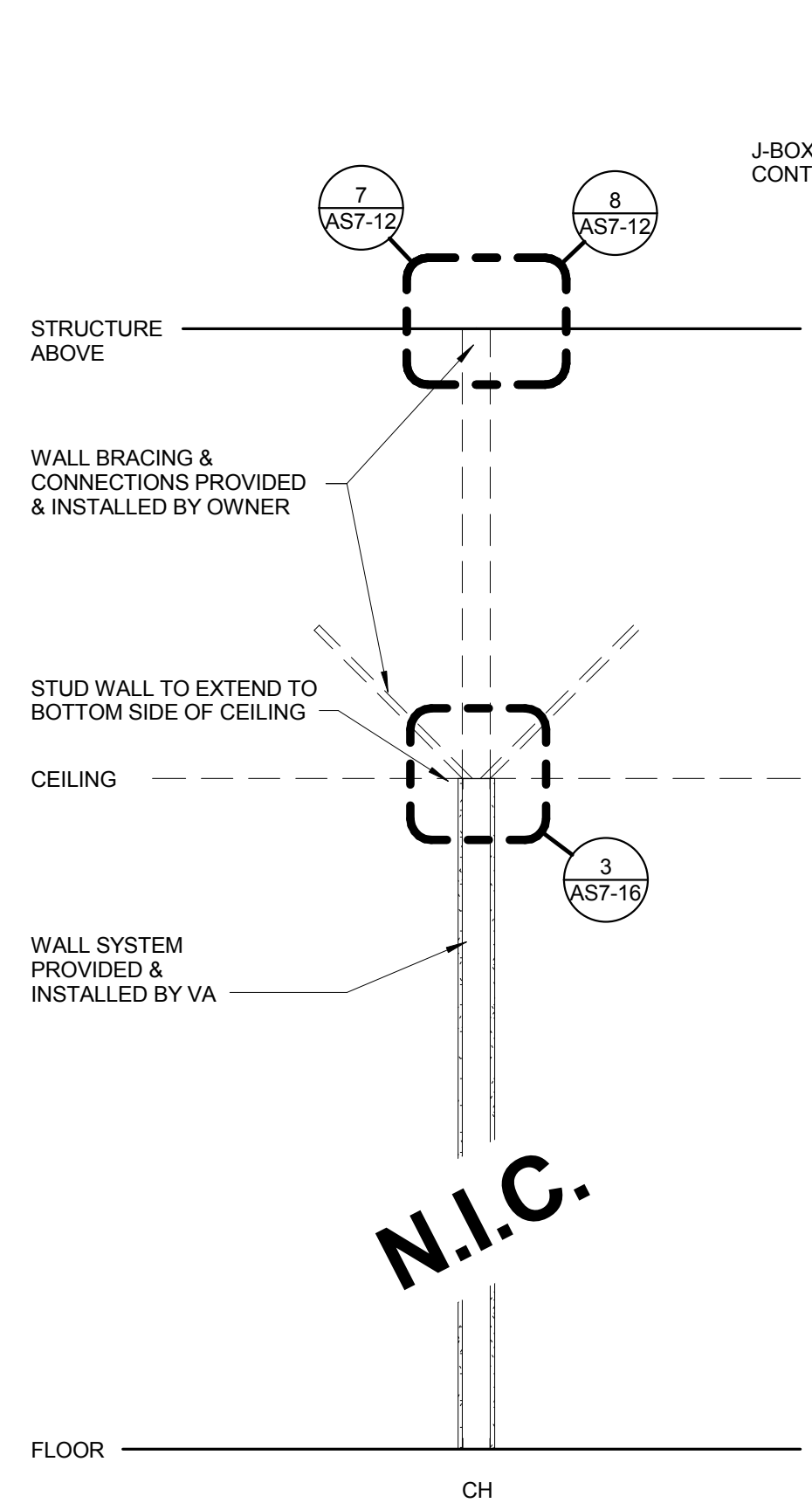
GENERAL CONTRACTOR TO COORDINATE BUILDING CONSTRUCTION WITH VA (VENDOR) AND INSTALLER OF DEMOUNTABLE PARTITION WALL SYSTEM

OVERALL WIDTH

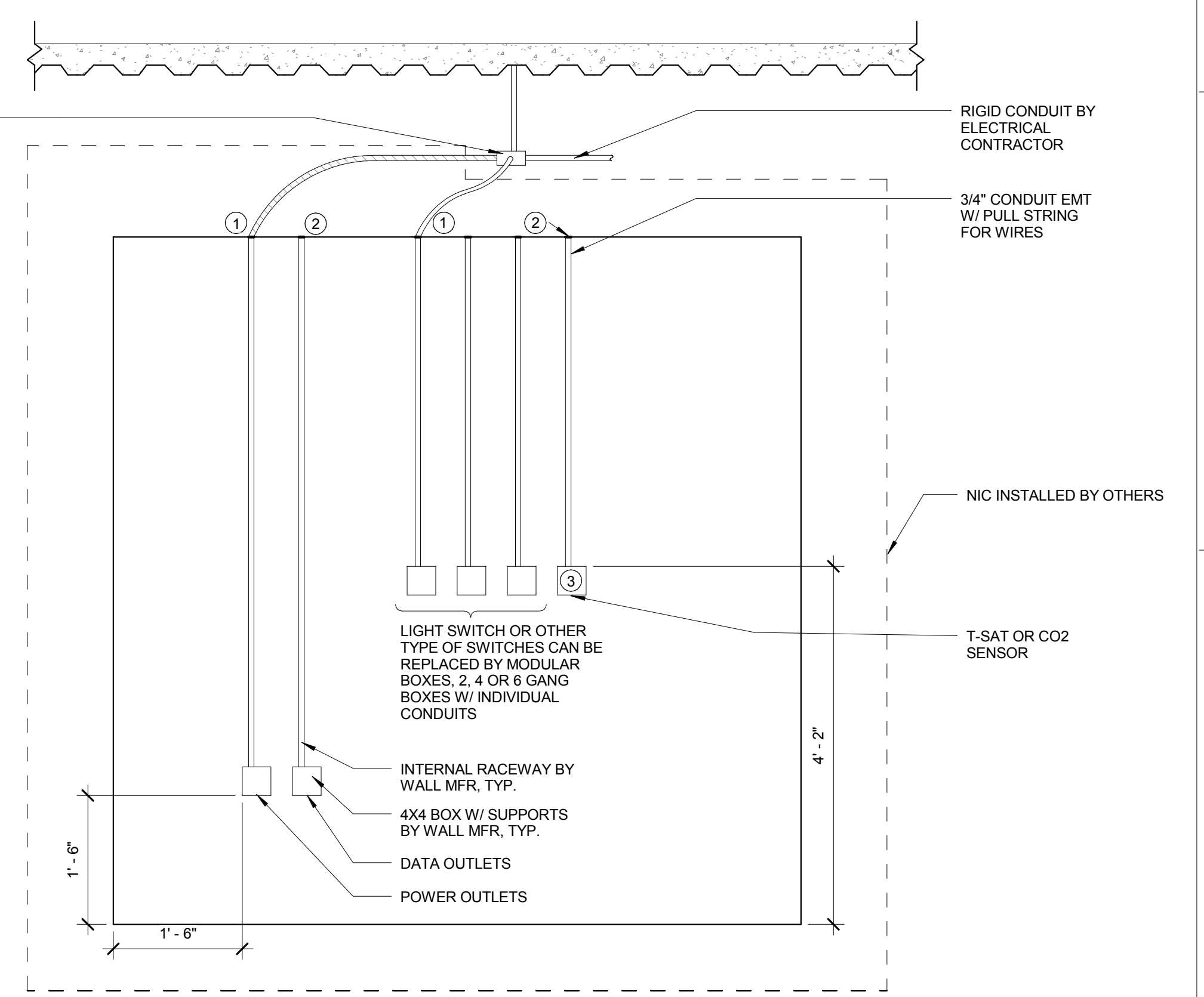
TO BE DETERMINED

N.I.C.

DEMOUNTABLE WALL SYSTEM



WALL HEIGHT LEGEND - DEMOUNTABLE WALL



- GENERAL NOTES:
- REFER TO ARCHITECTURAL CONSTRUCTION DRAWINGS FOR LOCATION OF DEMOUNTABLE PARTITION WALLS
 - ELECTRICAL CONTRACTOR SHALL EXTEND BRANCH CIRCUIT FEEDERS TO OUTLETS AND SWITCHES. EXTEND WIRES TO OUTLET AND SWITCHES. INSTALL ALL WIRING DEVICES
 - PROVIDE SOFT BUSHING FOR THE DATA AND CONTROL CONDUITS. TELECOM SHALL PULL DATA CABLES TO DEVICES. CONTROLS CONTRACTOR TO PULL CONTROL WIRING FOR T-STAT AND CO2 SENSORS.
 - LOW VOLTAGE WIRING TO THERMOSTAT AND CO2 SENSOR BY CONTROL CONTRACTOR.

N.I.C. DEMOUNTABLE PARTITION
WALL
2 3/4" = 1'-0"

EQUIPMENT SHOWN WITH DASHED LINES IS NOT IN CONTRACT (NIC) SHOWN FOR REFERENCE ONLY

DEMOUNTABLE WALL, N.I.C. SHOWN FOR REFERENCE ONLY

CONTRACTOR FURNISHED AND INSTALLED

FINAL BID DOCUMENTS

7/29/2014 10:14:11 AM HILLIARD ARCHITECTS INC. COPYRIGHT

Revision	Date
Revision 3	07.30.2014
Revisions:	Date