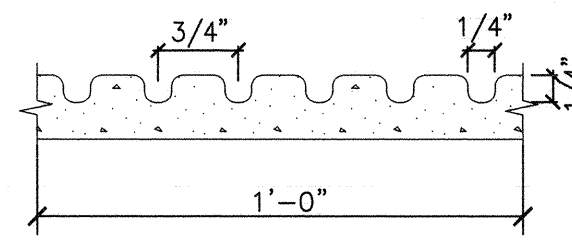


NOTES:
1. INSTALLATION TO BE COMPLETED IN ACCORDANCE WITH MANUFACTURERS SPECIFICATIONS.
2. DO NOT SCALE DRAWINGS.
3. CONTRACTORS NOTE: FOR PRODUCT AND COMPANY INFORMATION VISIT www.CADdetails.com/info REFERENCE NUMBER 382-029.

1890 BOLLARD - PERMANENT - 30" HIGH

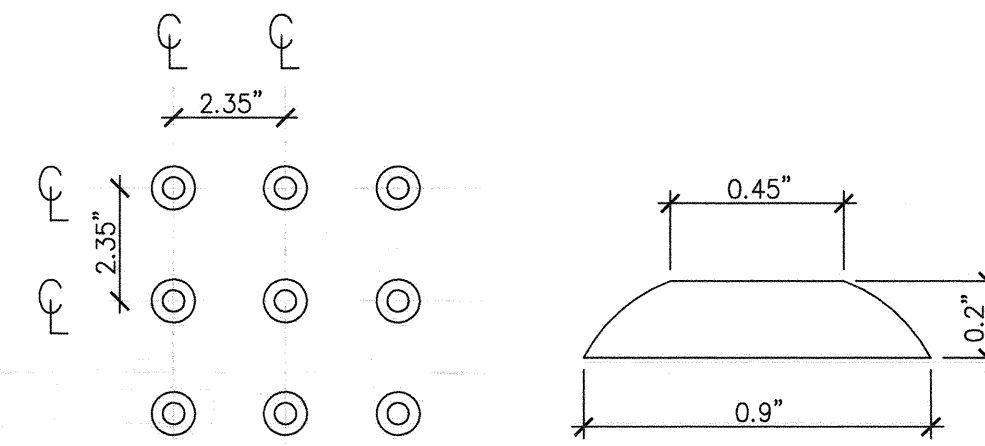
C1 ORNAMENTAL BOLLARD

NOT TO SCALE



A4 RAMP GROOVED BORDER

NOT TO SCALE



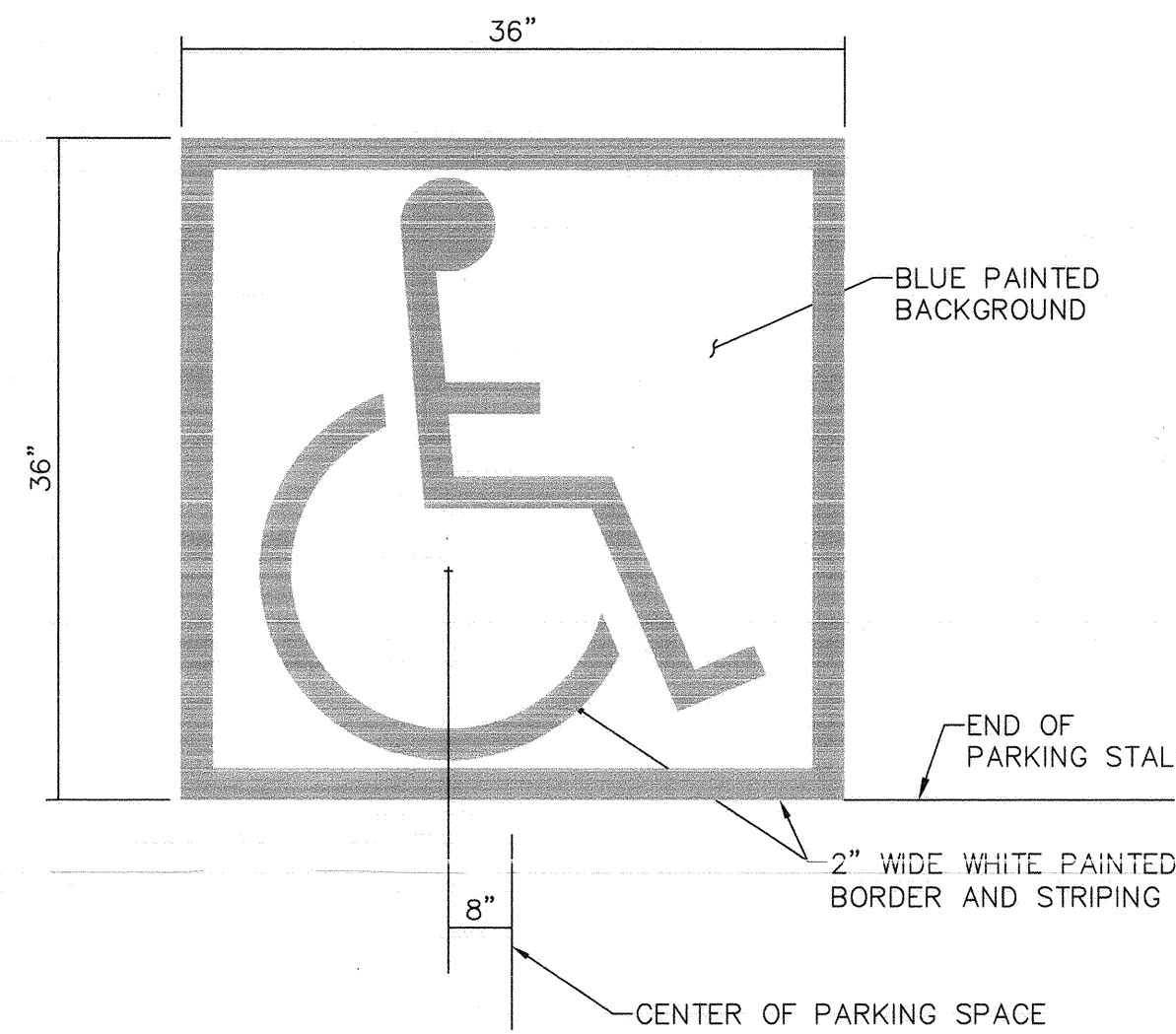
PLAN

SECTION

NOTE: DETECTABLE WARNING PER ADA SECTION 4.29; SHALL CONSIST OF RAISED TRUNCATED DOMES. COLOR TO CONTRAST FROM ADJACENT SURFACE. COLOR TO BE SELECTED FROM MANUFACTURER'S COLOR CHART BY COR AND MSN ENGINEER DURING SUBMITTAL REVIEW PROCESS.

B4 DETECTABLE WARNING SURFACE

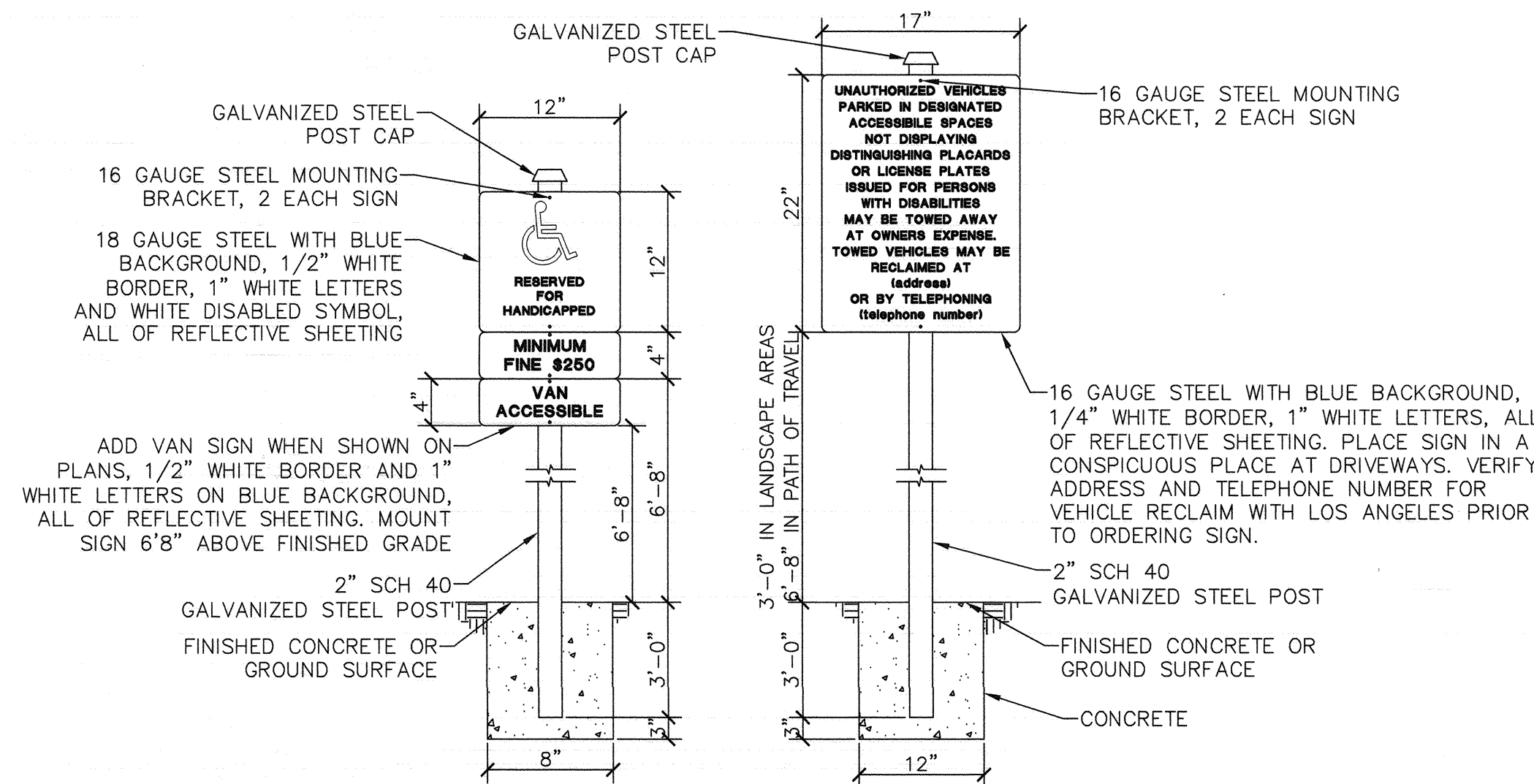
NOT TO SCALE



NOTE: PROPORTION PER AMERICANS WITH DISABILITIES ACT ACCESSIBILITY GUIDELINES FIGURE 43(A).

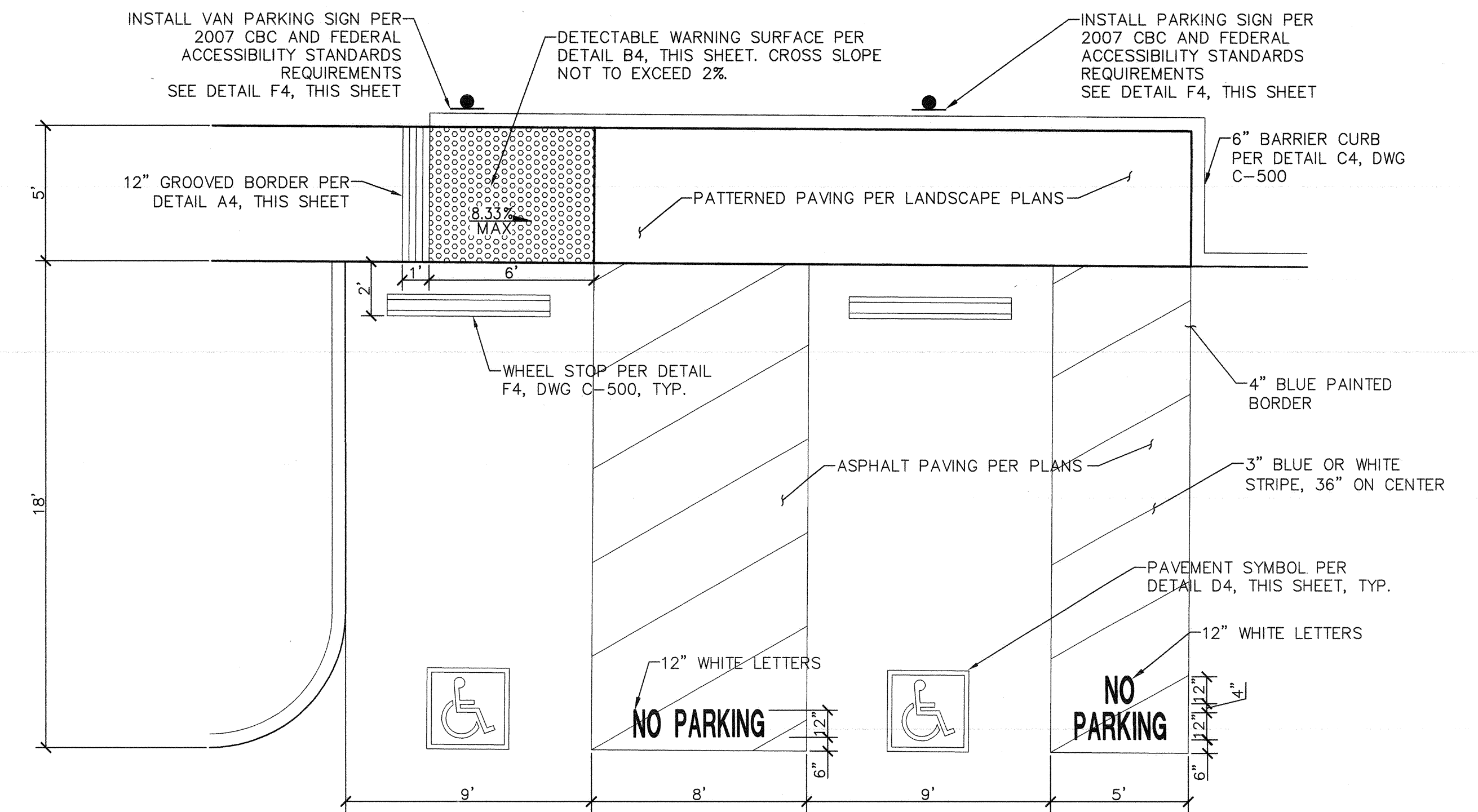
D4 ACCESSIBLE STALL SYMBOL

NOT TO SCALE



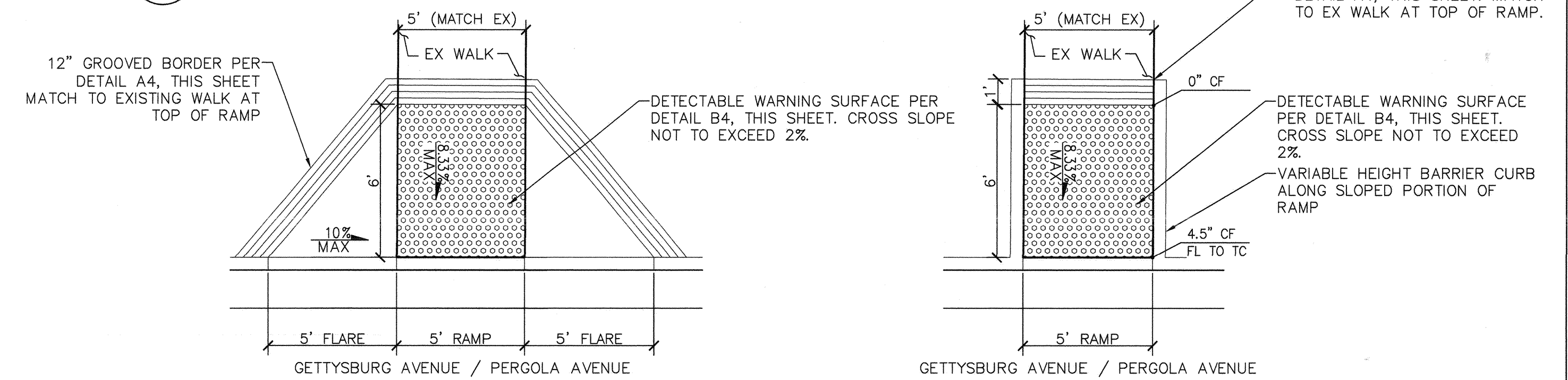
F4 ACCESSIBLE PARKING SIGNAGE

NOT TO SCALE



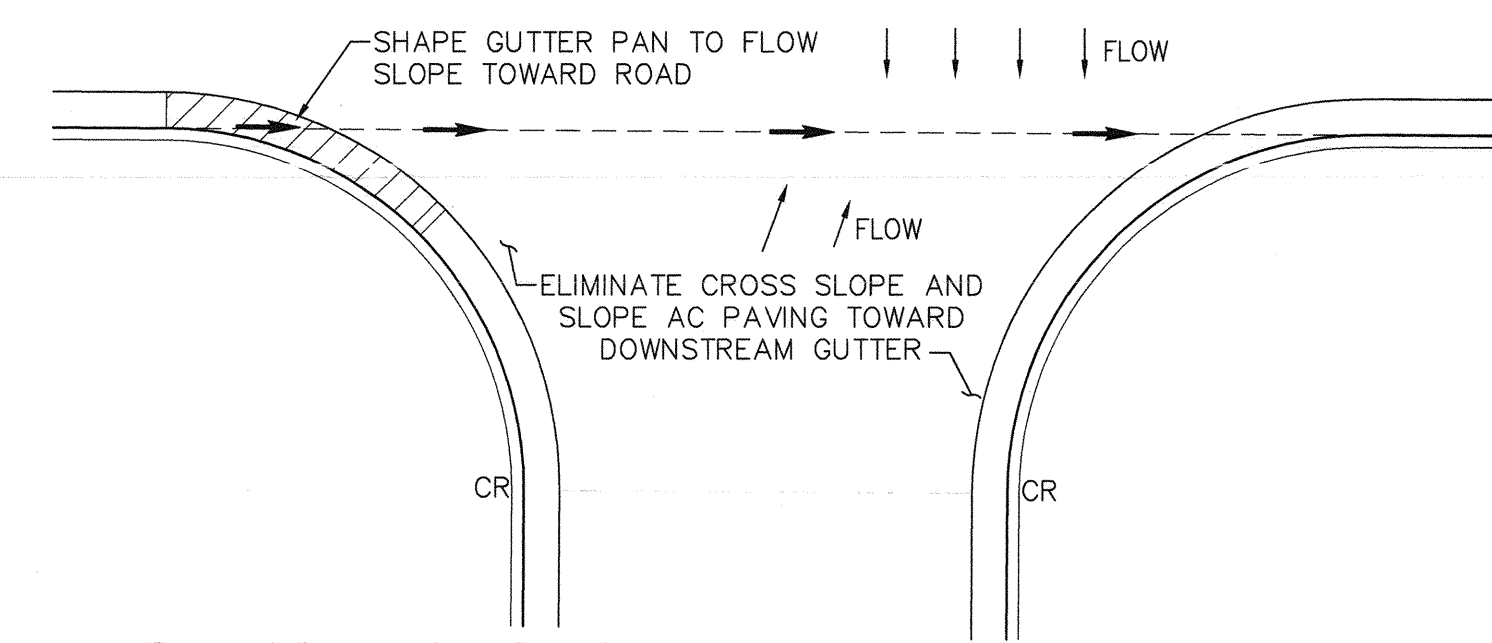
B7 ACCESSIBLE PARKING AREA

NOT TO SCALE



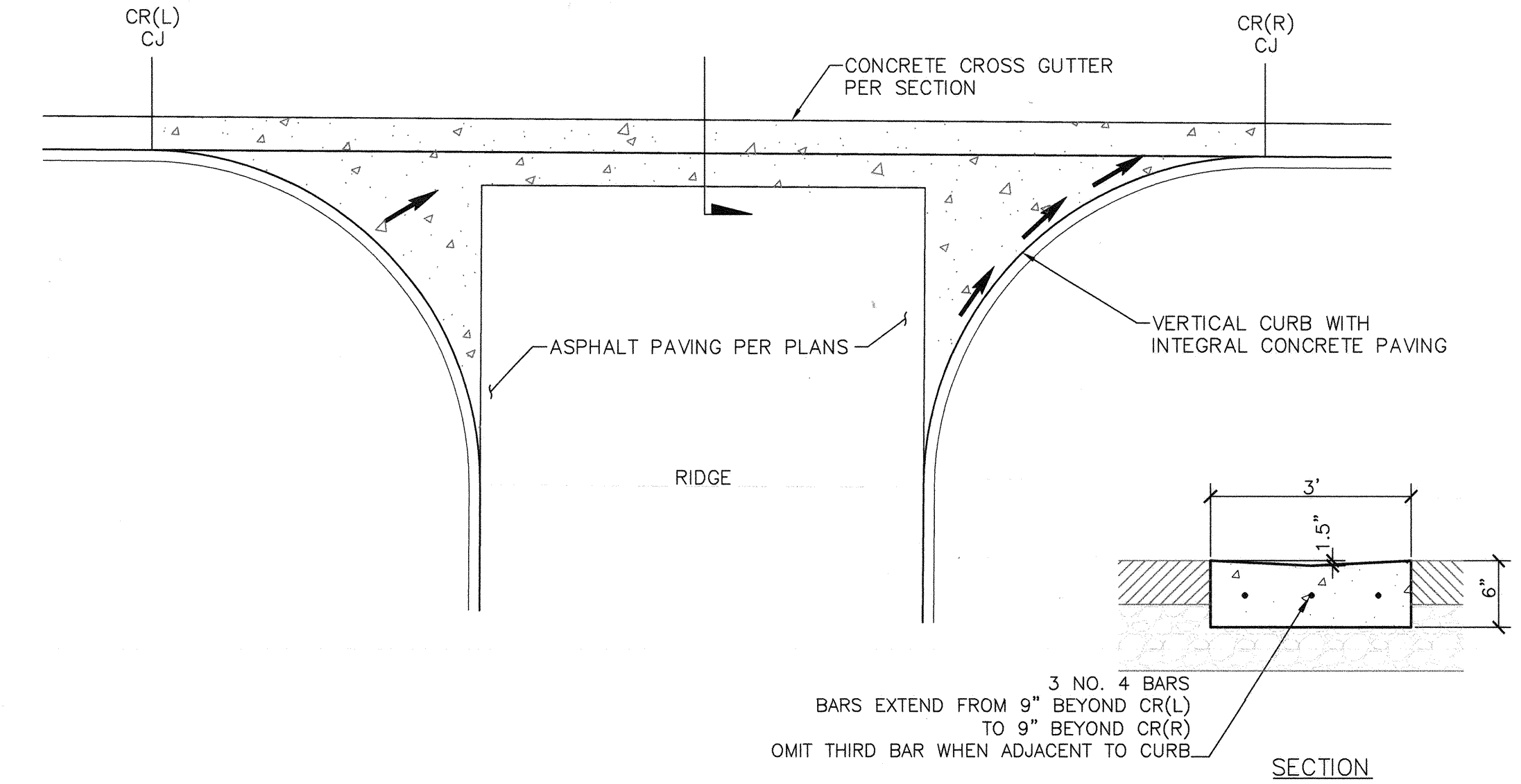
C7 PEDESTRIAN RAMP AT FLAG CIRCLE

NOT TO SCALE



D7 ASPHALT SWALE

NOT TO SCALE



F7 CROSS GUTTER AT DRIVEWAY (ADD ALTERNATE 1)

NOT TO SCALE

- 1 DETECTABLE WARNING ALONG FULL RAMP PER DETAIL B4, THIS DWG.
- 2 REFER TO LANDSCAPE PLANS FOR DECORATIVE PAVEMENT PATTERN AND COLOR.
- 3 12" GROOVED BORDER PER DETAIL A4, THIS DWG.
- 4 6" BARRIER CURB PER DETAIL C4, DWG C-500.
- 5 BOLLARD, PAINTED BLACK, 5' CLEAR BETWEEN.

F1 PEDESTRIAN RAMPS AND CROSSING AT CONSTITUTION AVE

NOT TO SCALE

- 6 FLUSH CURB AT CROSSWALK PER DTL C4, DWG C-500
- 7 TRANSITION FLUSH CURB TO VERTICAL CURB PER DTL F7, DWG C-500 (SIM)

CONSTRUCTION DOCUMENTS

| | | | | | | | | | | | | | | | | | | | | | | | |
|-----------|--|------|--|---|--|--|--|--|--|---|--|--------------------------|--|-----------------------------|--|---|--|--------------------|--|---|--|--------------------|--|
| Revisions | | Date | | Architecture / Engineering | | Subconsultant List | | SURVEY | | ELECTRICAL | | COST ESTIMATE | | GEOTECHNICAL ENGINEER | | NATIONAL CEMETERY ADMINISTRATION | | Drawing Title | | Project Title | | Date: | |
| | | | | JACOBS | | WAGNER ENGINEERING & SURVEY, INC. | | ECOM ENGINEERING, INC. | | THE SIERRA WEST GROUP, L.L.C. | | STEVENS FERRONE & BAILEY | | 1050 20TH STREET, SUITE 200 | | 16933 PARTHENIA STREET, SUITE 100, NORTHridge, CA 91343, 818.892.6565 | | SECTIONS & DETAILS | | LOS ANGELES NATIONAL CEMETERY REPLACE ROADS AND CURBS | | September 13, 2013 | |
| | | | | 1050 20TH STREET, SUITE 200 | | 1796 TRIBUTE ROAD, SUITE 100, SACRAMENTO, CA 95815, 916.641.5600 | | 9700 BUSINESS PARK DRIVE, SUITE 102, SACRAMENTO, CA 95827 (916) 925-4000 | | 1600 WILLOW PASS COURT, CONCORD, CA 94520, 925.688.1001 | | | | | | | | | | | | Project No. | |
| | | | | PHONE (916) 929-3323 FAX (916) 929-1772 | | | | | | | | | | | | | | | | | | 898CM3024 | |
| | | | | | | | | | | | | | | | | | | | | | | Drawing No. | |
| | | | | | | | | | | | | | | | | | | | | | | C-501 | |
| | | | | | | | | | | | | | | | | | | | | | | Sht. 49 of 53 | |

GENERAL NOTES

1. IT IS THE INTENT OF THESE PLANS AND SPECIFICATIONS THAT A COMPLETE AND WORKABLE ELECTRICAL INSTALLATION BE PROVIDED FOR ALL THE EQUIPMENT DESCRIBED OR SHOWN AS BEING IN THIS CONTRACT. FURNISH ALL LABOR AND TOOLS NECESSARY. FURNISH AND INSTALL ALL APPARATUS, MATERIALS AND EQUIPMENT IN A FASHION COMPLYING WITH ALL APPLICABLE CODES, INCLUDING ITEMS REQUIRED BUT NOT NORMALLY SHOWN, SUCH AS COUPLING, HANGERS, BRACKETS, CLAMPS, BOXES, CONNECTORS AND HARDWARE.
2. DIMENSIONS SHALL TAKE PRECEDENCE OVER DRAWINGS. LARGE SCALE DRAWINGS TAKE PRECEDENCE OVER SMALLER SCALE. OBTAIN CLARIFICATION FROM THE ENGINEER WHEN ANY DIMENSION CANNOT BE CLEARLY DERIVED FROM THE DRAWINGS. DO NOT USE SCALED DIMENSION WITHOUT PRIOR APPROVAL FROM THE ENGINEER.
3. THE REPRESENTATION OF PHYSICAL PLACEMENT OF EXISTING CONDUITS HAS BEEN DEVELOPED FROM THE BEST INFORMATION AVAILABLE FROM THE VA AT THE TIME THE DRAWINGS WERE PREPARED. THE VA PROVIDES THIS ONLY AS A GENERAL GUIDELINE FROM THE CONVENIENCE OF BIDDERS/CONTRACTORS AND DOES NOT GUARANTEE OR WARRANT IN ANY WAY EXPRESSLY AFFECTS IN ANY WAY THE DUTY OF THE CONTRACTOR TO FURNISH ACCURATE "AS BUILT DRAWINGS" AFTER THE COMPLETION OF THE CONTRACT.
4. CONTRACTOR SHALL COMPLY WITH ALL REGULATIONS AND LAWS OF AUTHORITIES HAVING JURISDICTION.
5. ALL PRODUCTS USED ON THE PROJECT SHALL COMPLY WITH SPECIFICATIONS & BE APPROVED BY THE ENGINEER PRIOR TO INSPECTION
6. THE CONTRACTOR SHALL OBTAIN ALL NECESSARY PERMITS FROM THE APPLICABLE DIVISION OF INDUSTRIAL SAFETY FOR ANY TRENCHES OR EXCAVATIONS, 5'-0" OR MORE IN DEPTH.
7. COORDINATE ALL SITE SIGNAL, ELECTRICAL, DATA WORK TO PROVIDE COMPLETE OPERATING SYSTEM.
8. PROVIDE BARRICADE AND PEDESTRAIN PROTECTION AS REQUIRED BY BUILDING DEPARTMENT AND LOCAL JURISDICTION.
9. ALL TRENCHES OUTSIDE OF THE BARRICADE LIMITS SHALL BE BACKFILLD AND PAVED NOT LATER THAN 72 HOURS AFTER BEING OPENED. DURING THE TIME THE TRENCHES ARE OPEN IN TRAFFIC AREAS, THE CONTRACTOR SHALL PROVIDE TRAFFIC PLATES AND SIGNS, COORDINATE WORK WITH THE VA FOR VISUAL AND SAFETY REASONS.
10. CONTRACTOR SHALL PROTECT ALL EXCAVATION AND CONSTRUCTION FROM RAIN OR WATER DAMAGE.
11. SLOPE ALL FINISH GRADES AT A MINIMUM OF 2% AWAY FROM BUILDING.
12. ALL EXPOSED CONDUITS RACEWAY AND BOXES SHALL BE PAINTED TO MATCH THE SURFACES WHERE INSTALLED.
13. ALL EXISTING MATERIALS REMOVED FROM BUILDING SHALL BE REMOVED FROM SITE.
14. ALL EXISTING ELECTRICAL EQUIPMENT, CONDUIT, WIRE, ETC NOT SHOWN AS ALTERED SHALL REMAIN IN USE.
15. PATCH, REPAIR AND PAINT EXISTING SURFACES DAMAGED WITH NEW CONSTRUCTION.
16. USE HAND TOOLS TO REMOVE SOIL, PAVING AND OTHER CONSTRUCTION WORK, WITHIN 15 INCHES OF EXISTING BUILDINGS.
17. IF STRUCTURAL MEMBERS NOT INDICATED TO BE REMOVED ARE INTERFERING WITH NEW CONSTRUCTION, OBTAIN WRITTEN AUTHORIZATION FROM STRUCTURAL ENGINEER OF RECORD OF ALL FACILITIES NECESSARY TO BE KEPT IN OPERATION.

ABBREVIATIONS

| | |
|-------|----------------------------------|
| AC | ALTERNATING CURRENT |
| AFF | ABOVE FINISH FLOOR |
| AFG | ABOVE FINISH GRADE |
| A | AMPERE |
| ANN | ANNUNCIATOR |
| ATS | AUTOMATIC TRANSFER SWITCH |
| BATT | BATTERY |
| BLDG | BUILDING |
| BRKR | BREAKER |
| C | CONDUIT |
| CATV | CABLE TELEVISION |
| CB | CIRCUIT BREAKER |
| CKT | CIRCUIT |
| CO | CONDUIT ONLY |
| COMM | COMMUNICATIONS |
| COMP | COMPUTER NETWORK |
| CONT | CONTINUE |
| CLS | CLASS ROOM |
| CT | CURRENT TRANSFORMER |
| CTC | CLOCK TERMINAL CABINET |
| CU | COPPER |
| DB | DIRECT BURIED |
| DEF | DUAL ELEMENT FUSE |
| DEMO | DEMOLISH |
| E | EXISTING DEVICE TO REMAIN |
| EM | EMERGENCY |
| EMT | ELECTRICAL METALLIC TUBING |
| EOL | END OF LINE RESISTOR |
| EQUIP | EQUIPMENT |
| ER | EXISTING TO BE RELOCATED |
| EXIST | EXISTING |
| F | FUSE |
| FACP | FIRE ALARM CONTROL PANEL |
| FATC | FIRE ALARM TERMINAL CABINET |
| FLA | FULL LOAD AMP |
| FO | FIBER OPTIC |
| FOPP | FIBER OPTIC PATCH PANEL |
| FLEX | FLEXIBLE METALIC CONDUIT |
| G | GROUND |
| GND | GROUND |
| GFCI | GROUND FAULT CIRCUIT INTERRUPTER |
| HV | HIGH VOLTAGE |
| IC | INTERCOMM |
| IG | ISOLATED GROUND |
| J, JB | JUNCTION BOX |
| J-BOX | JUNCTION BOX |
| KCMIL | THOUSAND CIRCULAR MILS |
| KO | KNOCKOUT |
| LCL | LONG CONTINUOUS LOAD |
| LRA | LOCKED ROTOR AMP |
| N | NEUTRAL |
| NEC | NATIONAL ELECTRICAL CODE |
| NF | NONFUSED |
| NIC | NOT IN CONTRACT |
| NTS | NOT TO SCALE |
| (N) | NEW |
| PA | PUBLIC ADDRESS |
| PATC | PUBLIC ADDRESS TERMINAL CABINET |
| PB | PULL BOX |
| PNL | PANEL |
| PWR | POWER |
| R | EXISTING DEVICES TO BE REMOVED |
| SEC | SECURITY |
| SECTC | SECURITY TERMINAL CABINET |
| TC | TIME CLOCK |
| TEL | TELEPHONE |
| TETC | TELEPHONE TERMINAL CABINET |
| TEMP | TEMPORARY |
| TSP | TWISTED SHIELD PAIR CABLE |
| TVTC | TELEVISION TERMINAL CABINET |
| TYP | TYPICAL |
| TP | TWISTED PAIR |
| UG | UNDERGROUND |
| UON | UNLESS OTHERWISE NOTED |
| W | WATTS |
| WM | WIREMOLD |
| W/O | WITHOUT |
| WP | WEATHERPROOF |
| X | EXISTING TO BE REMOVED |
| XFMR | "T1" TRANSFORMER |

SYMBOL LIST

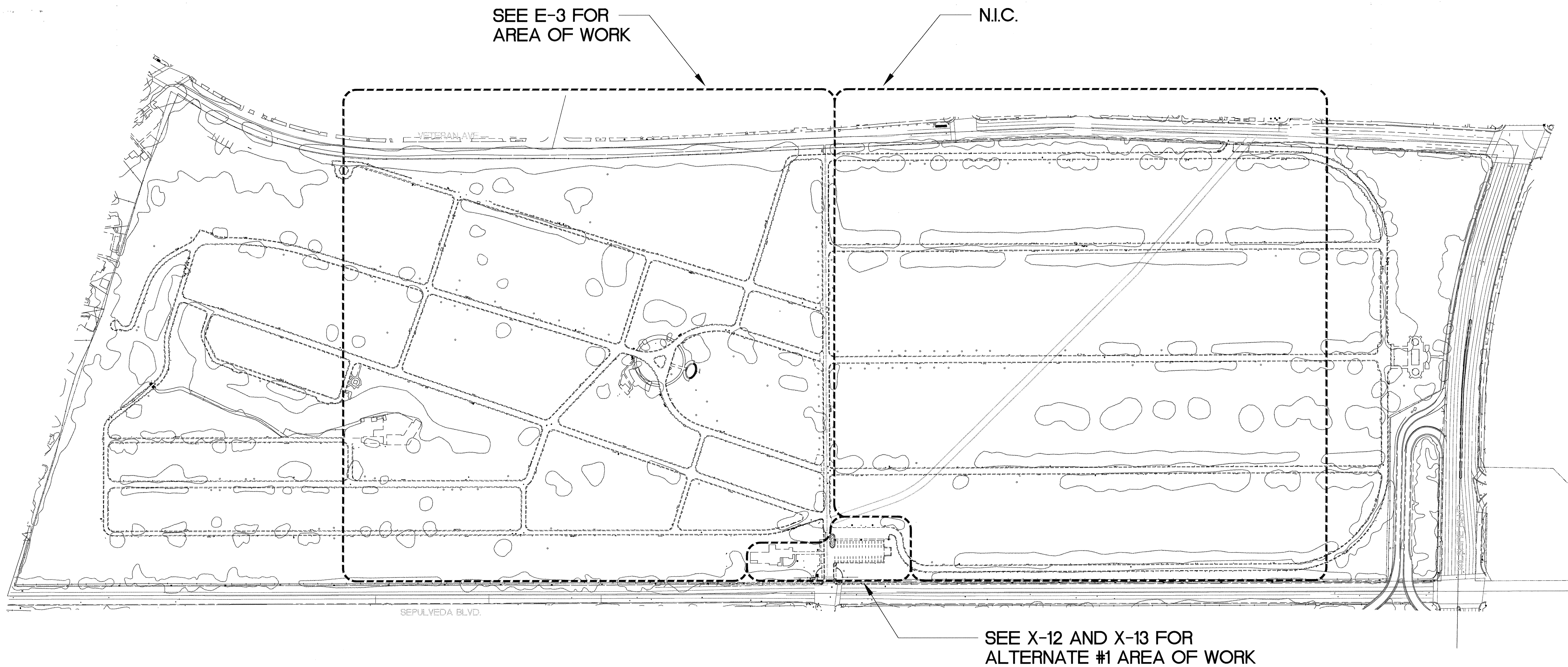
| | |
|--|---|
| | DISCONNECT SWITCH (NEMA TYPE "3R" OR U.O.N.) |
| | MOLDED CASE CIRCUIT BREAKER. |
| | TRANSFORMER W/ SECONDARY GROUND. |
| | GROUND CONNECTION TO MAIN BUILDING GROUNDING SYSTEM U.O.N. |
| | CONDUIT HOMERUN TO PANEL "A"; CIRCUITS NO. 1,3 DASHES INDICATE NUMBER OF WIRES. |
| | CONDUIT RUN CONCEALED UNDER FLOOR OR BELOW GRADE |
| | EXISTING CONDUIT |
| | EXISTING CONDUIT RUN TO BE ABANDONED. |
| | CONDUIT STUB-OUT, CAPPED |
| | CONDUIT UP |
| | CONDUIT DOWN |
| | 2#10 & 1#10 (GND) |
| | 2#10, 1#10 (N) & 1#10 (GND) |
| | INDICATES 3#6 & 1#10 GND. CONDUCTORS IN CONDUIT. |
| | TERMINAL CABINET (SIZE AS NOTED) |
| | PANELBOARD |
| | UNDERGROUND PULL BOX |
| | REFERENCE NOTES (NUMBER 3) |
| | LUMINAIRE MOUNTED ON CONCRETE POLE |
| | EXISTING. |
| | RELOCATE. |
| | EXISTING RELOCATED IN LOCATION SHOWN. |

SHEET INDEX

| SHEET | DESCRIPTION |
|-------|--|
| E-1 | SYMBOLS, GENERAL NOTES, ABBREVIATIONS |
| E-2 | OVERALL EXISTING SITE PLAN - ELECTRICAL |
| E-3 | ENLARGED MAINTENANCE YARD & COLUMBARUM AREA - NEW ELECTRICAL |
| E-4 | ELECTRICAL DETAILS |

CONSTRUCTION DOCUMENTS

| | | | | | | | | | | | | | | | | | | | | | | | | | |
|---|--|---|--|---|--|---|--|--|--|---|--|-----------------------------|--|---|--|----------------------|--|----------------|--|--|--|--|--|-------------------------------------|--|
| ECOM ENGINEERING INC. 1796 TRIBUTE ROAD, SUITE 100 SACRAMENTO, CA 95815 916.641.5600 916.641.1640 FAX WWW.ECOMENG.COM JOB NO. 2009-D216 RL MAC DESIGNERS MAC/ZS/MD | | JACOBS ENGINEERING GROUP, INC. 180 PROMENADE CIR. STE 300 SACRAMENTO, CA 95834 PHONE (916) 929-3323 FAX (916) 929-1772 | | N ATIONAL C EMETERY A DMINISTRATION | | <table><tr><td colspan="2">Drawing Title SYMBOLS, GENERAL NOTES, ABBREVIATIONS</td><td colspan="2">Project Title LOS ANGELES NATIONAL CEMETERY REPLACE ROADS AND CURBS</td><td colspan="2">Date: September 13, 2013</td></tr><tr><td colspan="2">Approved: Director, Office of Construction Management</td><td colspan="2">Building Number -</td><td colspan="2">Checked MAC</td></tr><tr><td colspan="2">Approved: Director, Project Management Service</td><td colspan="2">Location LOS ANGELES NATIONAL CEMETERY LOS ANGELES, CALIFORNIA</td><td colspan="2">DRAWING NO. E-1 Dwg. 50 OF 53</td></tr></table> | | Drawing Title SYMBOLS, GENERAL NOTES, ABBREVIATIONS | | Project Title LOS ANGELES NATIONAL CEMETERY REPLACE ROADS AND CURBS | | Date: September 13, 2013 | | Approved: Director, Office of Construction Management | | Building Number - | | Checked MAC | | Approved: Director, Project Management Service | | Location LOS ANGELES NATIONAL CEMETERY LOS ANGELES, CALIFORNIA | | DRAWING NO. E-1 Dwg. 50 OF 53 | |
| Drawing Title SYMBOLS, GENERAL NOTES, ABBREVIATIONS | | Project Title LOS ANGELES NATIONAL CEMETERY REPLACE ROADS AND CURBS | | Date: September 13, 2013 | | | | | | | | | | | | | | | | | | | | | |
| Approved: Director, Office of Construction Management | | Building Number - | | Checked MAC | | | | | | | | | | | | | | | | | | | | | |
| Approved: Director, Project Management Service | | Location LOS ANGELES NATIONAL CEMETERY LOS ANGELES, CALIFORNIA | | DRAWING NO. E-1 Dwg. 50 OF 53 | | | | | | | | | | | | | | | | | | | | | |



1 OVERALL EXISTING SITE PLAN - ELECTRICAL

SCALE: 1" = 150'-0"



C:\Projects\2009-D216\Drawings\base_e_2.dwg 9/10/13 08:32:13 AM mcastellanos

CONSTRUCTION DOCUMENTS


| Revisions | Date |
|-----------|------|
| | |
| | |
| | |
| | |
| | |
| | |
| | |
| | |
| | |
| | |

ECOM ENGINEERING INC.
1796 TRIBUTE ROAD, SUITE 100
SACRAMENTO, CA. 95815
916.641.5600
916.641.1640 FAX
WWW.ECOMENG.COM

JOB NO. 2009-D216 PM MAC
DESIGNERS MAC/ZS/MD

REGISTERED PROFESSIONAL ENGINEER
No. E 017376
Exp. 2-28-14
ELECTRICAL
STATE OF CALIFORNIA

JACOBS
JACOBS ENGINEERING GROUP, INC.
180 PROMENADE CIR. STE 300
SACRAMENTO, CA 95834
PHONE (916) 929-5323 FAX (916) 929-1772

 **N ATIONAL
C EMETERY
A DMINISTRATION**

Drawing Title
**OVERALL EXISTING SITE PLAN -
ELECTRICAL**

Approved: Director, Office of Construction Management

Approved: Director, Project Management Service

Project Title
**LOS ANGELES NATIONAL CEMETERY
REPLACE ROADS AND CURBS**

Building Number
-

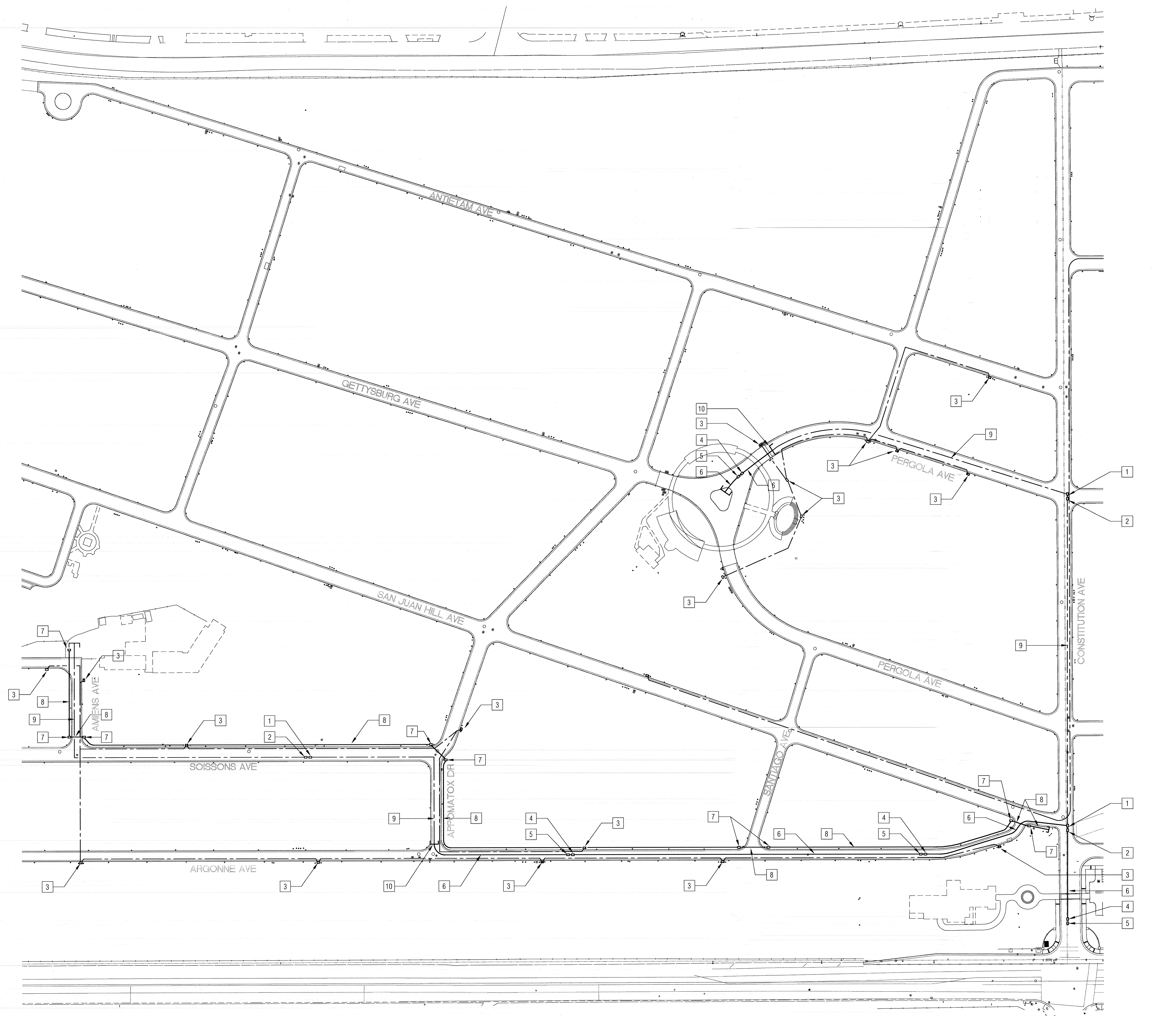
Location
**LOS ANGELES NATIONAL CEMETERY
LOS ANGELES, CALIFORNIA**

Date:
September 13, 2013

Project No.
898CM3024

DRAWING NO.
E-2

Dwg. 51 of 53



①

SCALE: 1" = 60'-0"

[illegible]

ECOM ENGINEERING INC.

1796 TRIBUTE ROAD, SUITE 100
SACRAMENTO, CA. 95815

916.641.5600
916.641.1640 FAX
WWW.ECOMENG.COM

JOB NO. 2009-0216 PM. MAC

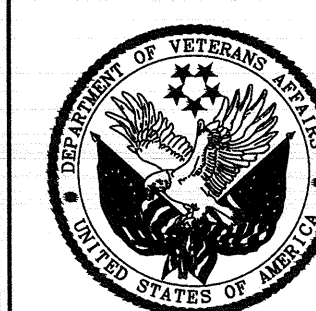
DESIGNERS MAC/ZS/MD

REGISTERED PROFESSIONAL ENGINEER
HP SHAW DONN LEE
No. E 017376
Exp. 9-30-14
ELECTRICAL
STATE OF CALIFORNIA

JACOBS™

JACOBS ENGINEERING GROUP, INC.

180 PROMENADE CIR. STE 300
SACRAMENTO, CA 95834
PHONE (916) 929-3323 FAX (916) 929-1772

[illegible]

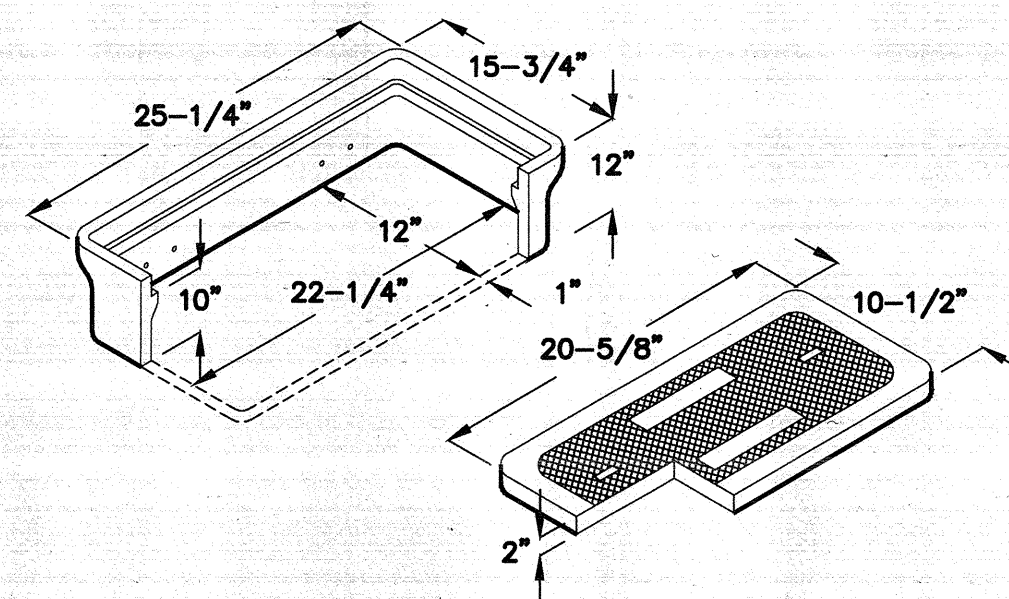
NATIONAL
CEMETERY
ADMINISTRATION

| |
|---|
| Drawing Title |
| ENLARGED MAINTENANCE YARD & COLUMBARIUM AREA — NEW ELECTRICAL |
| Approved: Director, Office of Construction Management |
| Approved: Director, Project Management Service |

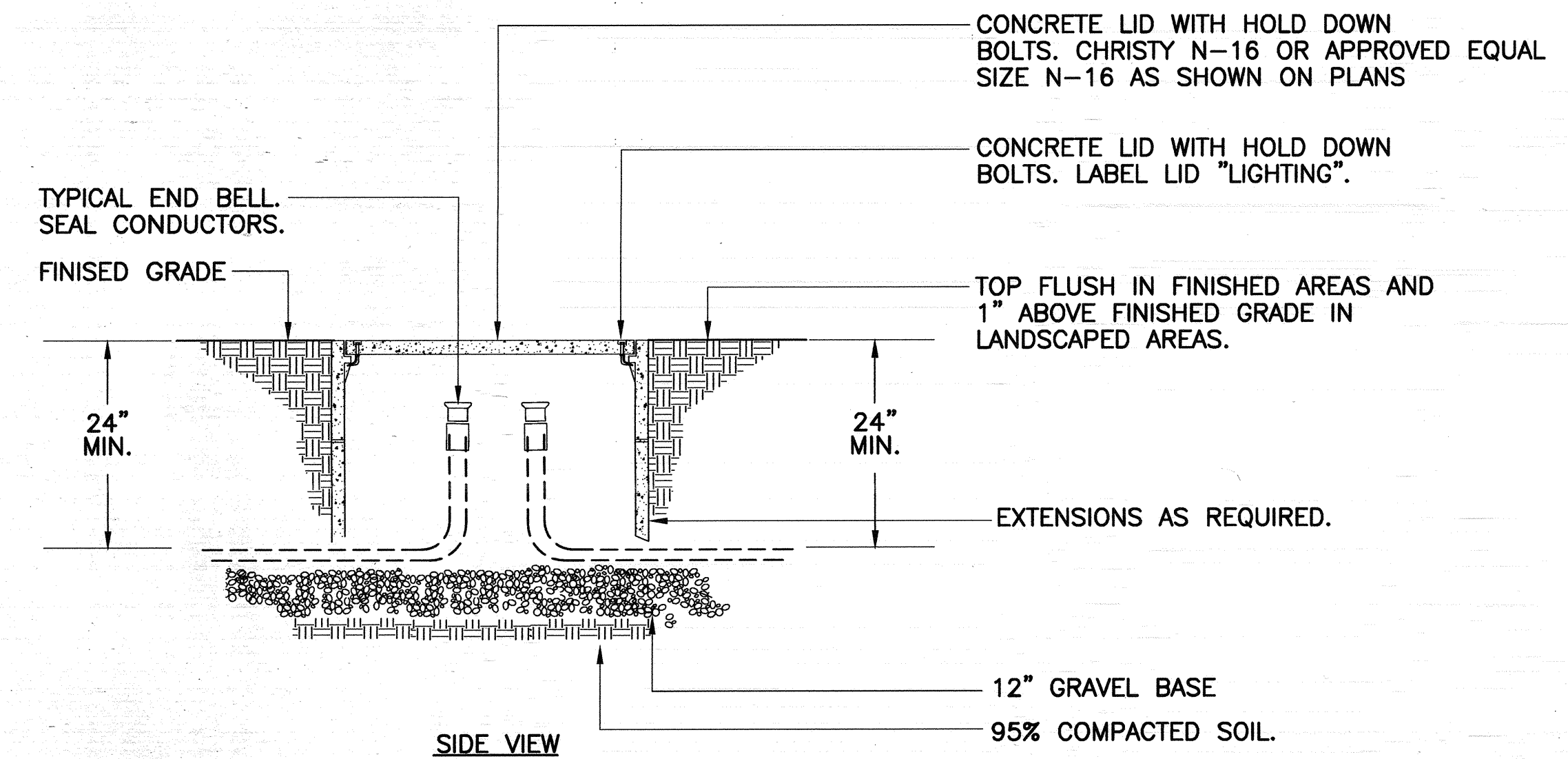
| | | |
|--|------------|-----------------------------|
| Project Title | | Date: |
| LOS ANGELES NATIONAL CEMETERY REPLACE ROADS AND CURBS | | September 13, 2013 |
| | | Project No. |
| | | 898CM3024 |
| Building Number | Checked | Drawn |
| — | MAC | MAC |
| Location | | DRAWING NO. |
| LOS ANGELES NATIONAL CEMETERY LOS ANGELES, CALIFORNIA | | E-3 |
| | | Dwg. 52 Of 53 |

N16 ELECTRICAL HANDHOLE

12" x 22-1/4" x 10"
(INSIDE DIMENSIONS)



- NOTES:
1. PROVIDE FULL TRAFFIC PULL BOX AND LID IN PAVED AREA.
 2. N16 IS MINIMUM SIZE FOR "LIGHTING" PULL BOX.

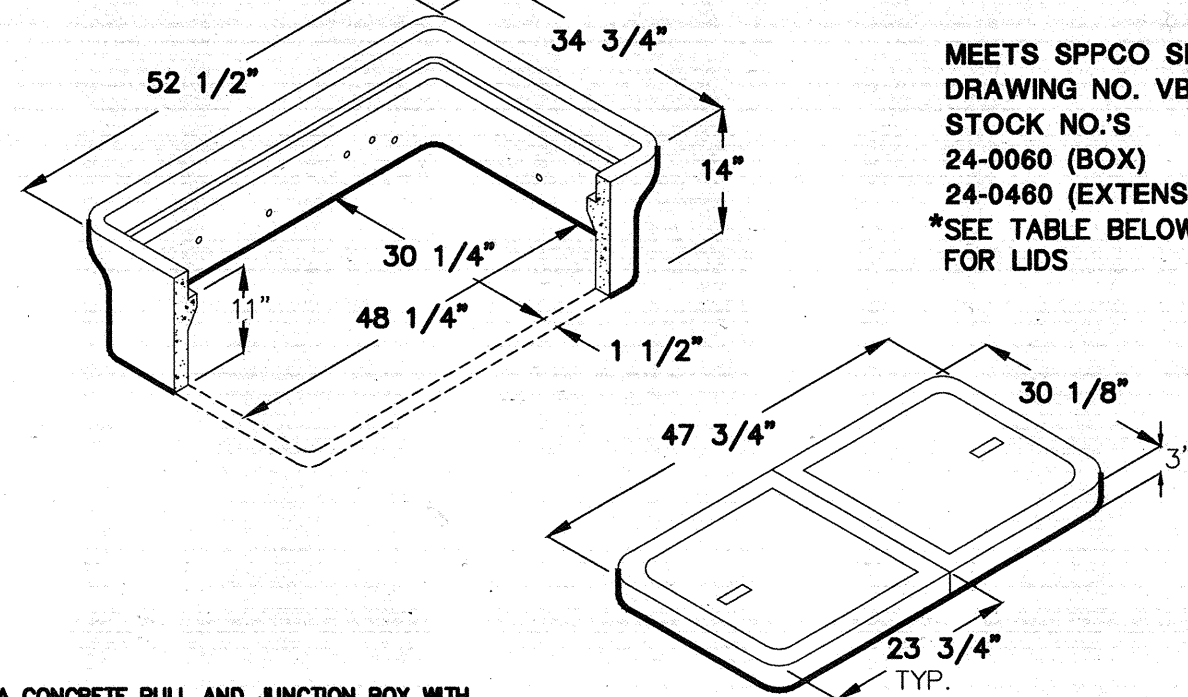


2 LIGHTING PULL BOX DETAIL

SCALE: NONE

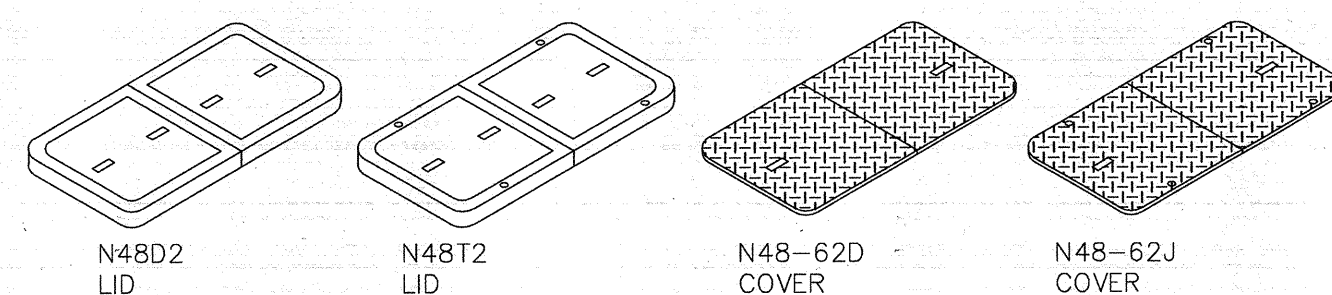
N48 ELECTRICAL HANDHOLE

30 1/4" x 48 1/4" x 11"
(INSIDE DIMENSIONS)



MEETS SPPCO SPECS.
DRAWING NO. V80060 U
STOCK NO.'S
24-0060 (BOX)
24-0460 (EXTENSION)
*SEE TABLE BELOW
FOR LIDS

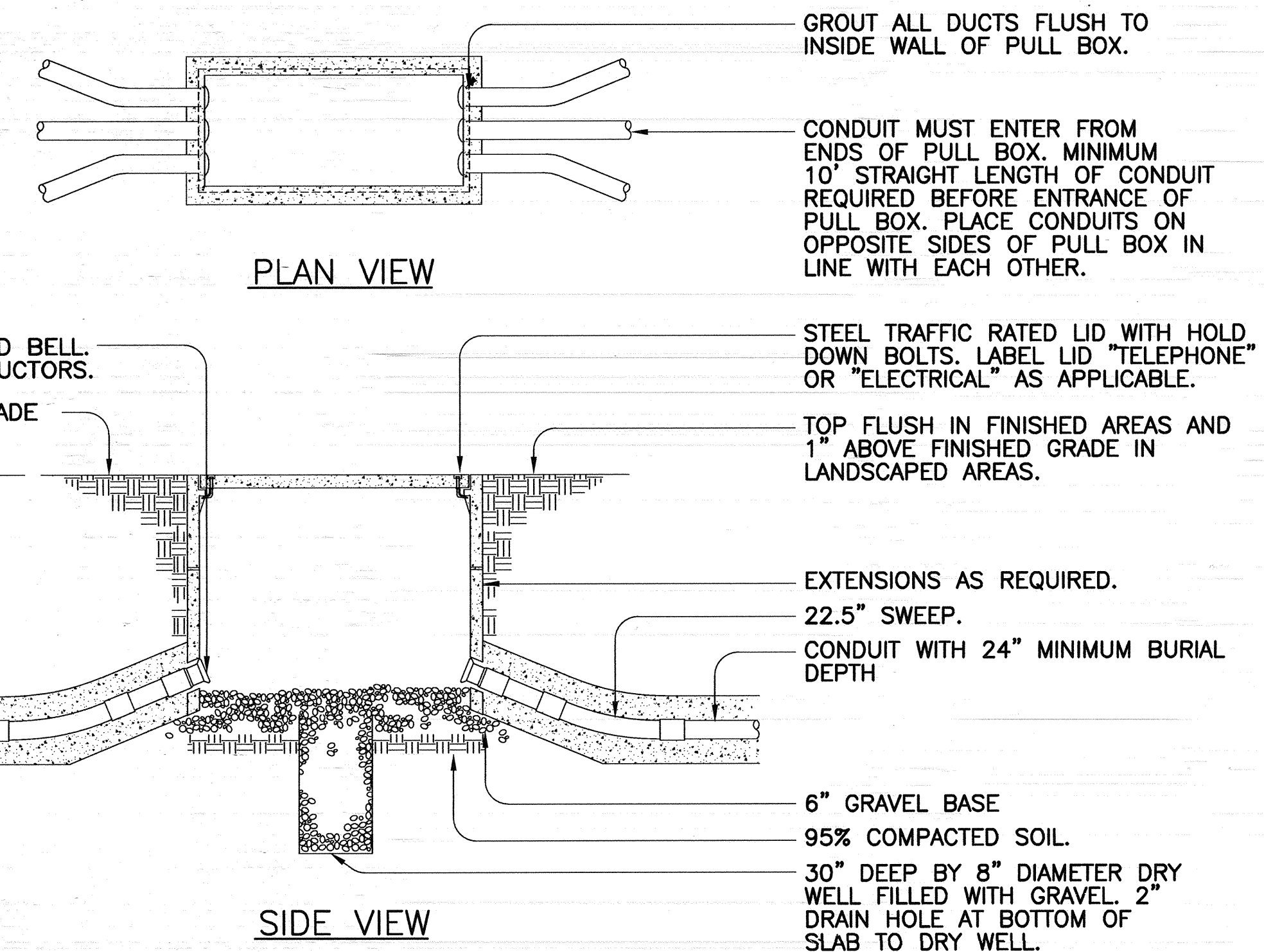
A CONCRETE PULL AND JUNCTION BOX WITH NON-SETTLING SHOULDERS TO MAINTAIN GRADE LEVEL. END AND SIDE PROCKOUTS ARE PROVIDED ON EXTENSION FOR FLEXIBILITY OF INSTALLATION.



| CATALOG NUMBER | PRODUCT | DESCRIPTION | APPROX. WT. (LBS.) |
|----------------|-----------|--|--------------------|
| N48 | BOX | REINFORCED CONCRETE | 382 |
| N48D2 | LID | 2 PIECE REINFORCED CONCRETE | 339 |
| N48T2 | LID | 2 PIECE REINFORCED CONCRETE WITH HOLD DOWN BOLTS | 338 |
| N48-62D | COVER | 2 PIECE STEEL CHECKER PLATE | 155 |
| N48-62J | COVER | 2 PIECE STEEL CHECKER PLATE WITH HOLD DOWN BOLTS | 154 |
| N48X10 | EXTENSION | 10" HIGH REINFORCED CONCRETE | 280 |
| N48SL | SLAB | REINFORCED CONCRETE | 417 |

4/10/97
N48-62J
© 1997 Jensen Precast

JENSEN
PRECAST



3 ELECTRICAL AND TELE/DATA PULL BOX DETAIL

SCALE: NONE

CONSTRUCTION DOCUMENTS

| | | | | | | | | | | | |
|--|--|--|--|--|--|---|--|---|--|------------------------------------|--|
| ECOM ENGINEERING INC. 1796 TRIBUTE ROAD, SUITE 100 SACRAMENTO, CA. 95815 916.641.5600 916.641.1640 FAX WWW.ECOMENG.COM JOB NO. 2009-D216 IN. MAC DESIGNER: MAC/ZS/MD | | JACOBS JACOBS ENGINEERING GROUP, INC. 180 PROMENADE CIR. STE 300 SACRAMENTO, CA 95834 PHONE (916) 929-3353 FAX (916) 929-1772 | | N ATIONAL C EMETERY A DMINISTRATION | | Drawing Title ELECTRICAL DETAILS | | Project Title LOS ANGELES NATIONAL CEMETERY REPLACE ROADS AND CURBS | | Date: September 13, 2013 | |
| | | | | | | Approved: Director, Office of Construction Management | | Building Number - | | Checked MAC | |
| | | | | | | Approved: Director, Project Management Service | | Location LOS ANGELES NATIONAL CEMETERY LOS ANGELES, CALIFORNIA | | Project No. 898CM3024 | |
| | | | | | | | | | | DRAWING NO. E-4 | |
| | | | | | | | | | | Desg. 53 of 53 | |

C:\Projects\2009-D216\00-Drawing\Notes_e-4.dwg 9-10-13 08:33:05 AM mcs:tlm