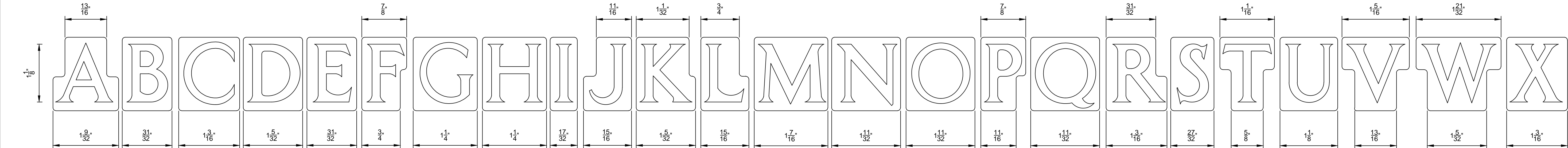
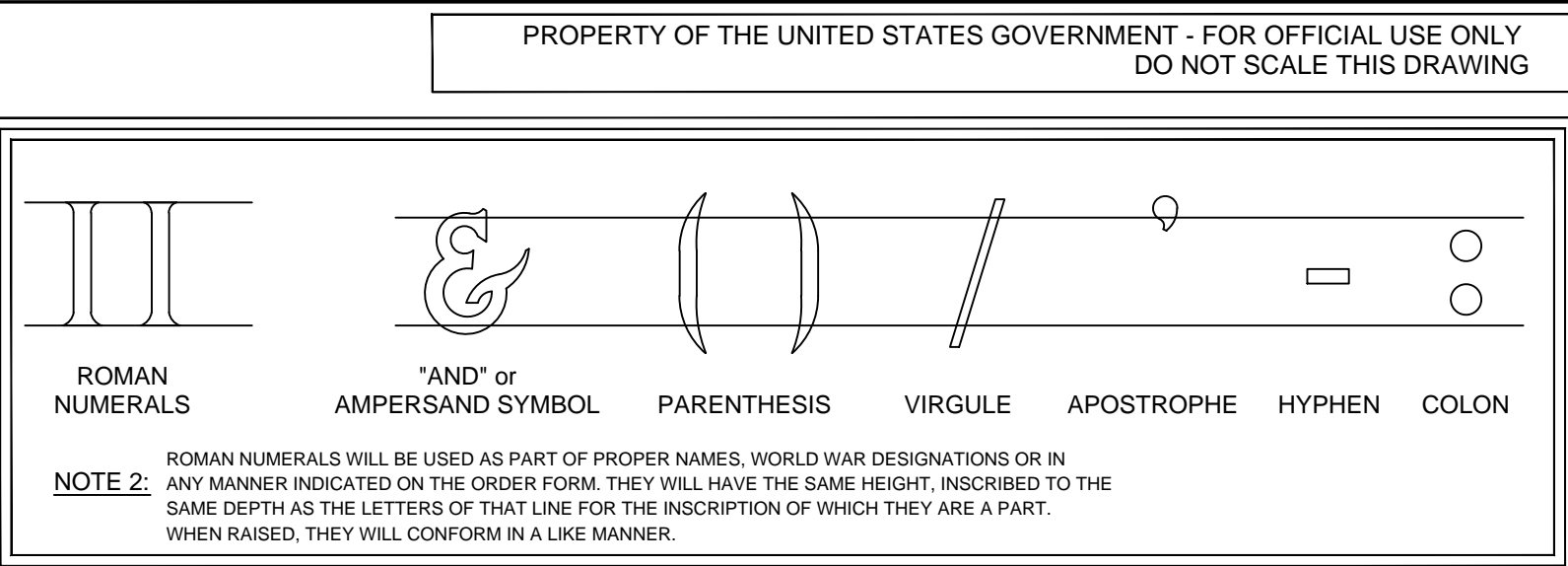
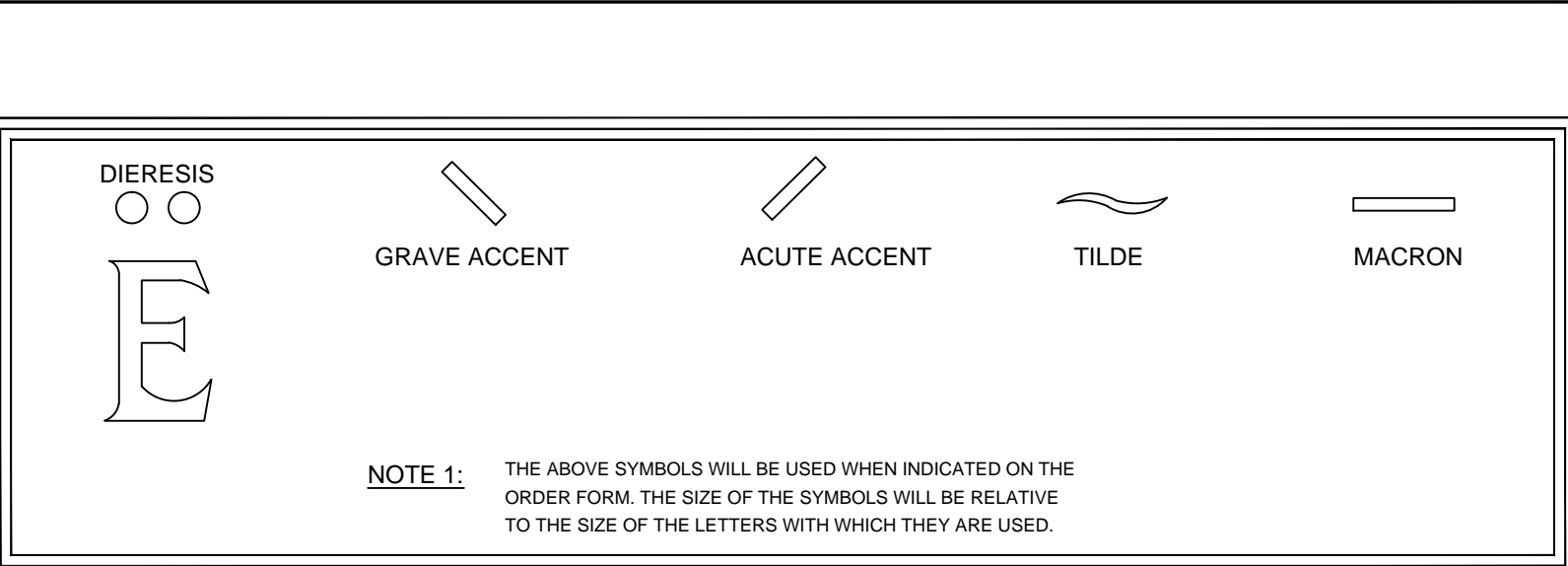
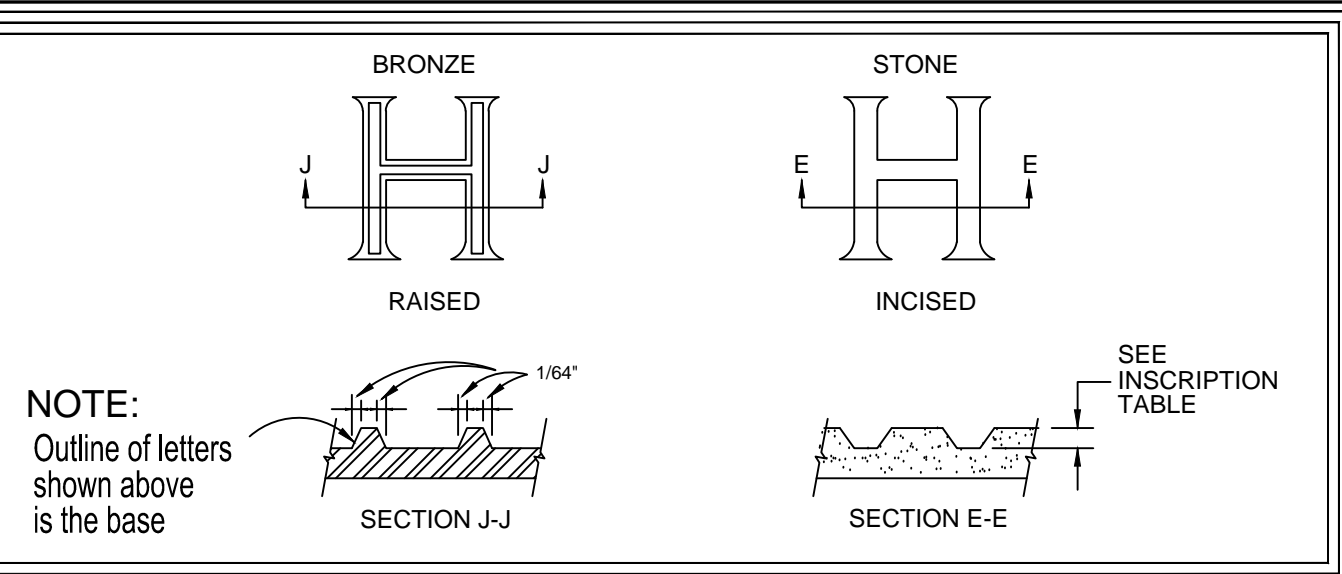


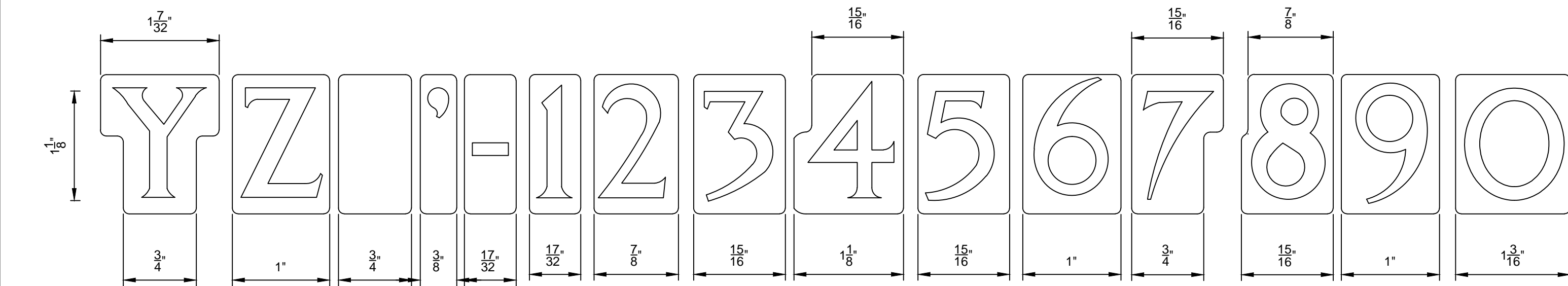
DRAWING LOCATION	MARKER TYPE	ITEM NAME AND LETTER HEIGHT								
		L1	L2	L3	L4	L5	L6	L7	EMBLEM	
		1 1/8"	1"	7/8"	3/4"	7/16"	3/8"	5/8"	2" OR 3"	
		DEPTH BY MARKER TYPE								
A-B1	B1	N/A	3/32"	N/A	3/32"	N/A	N/A	N/A	3/32"	
A-F-1	F1	7/32" - 9/32"	N/A	6/32" - 7/32"	6/32" - 7/32"	N/A	N/A	N/A	7/32" - 9/32"	
A-G1/J1/L1	G1/J1/L1	7/32" - 9/32"	N/A	6/32" - 7/32"	6/32" - 7/32"	N/A	N/A	N/A	7/32" - 9/32"	
A-MW-1/23	A1/C1	N/A	N/A	N/A	N/A	4/32" - 5/32"	N/A	4/32" - 5/32"	4/32" - 5/32"	
A-NCIS-1/2	E1/H1/I1	5/32" - 7/32"	4/32" - 6/32"	4/32" - 6/32"	4/32" - 6/32"	N/A	N/A	N/A	5/32" - 7/32"	
A-U1-1/2	U1	7/32" - 9/32"	6/32" - 7/32"	6/32" - 7/32"	6/32" - 7/32"	N/A	N/A	N/A	7/32" - 9/32"	
A-V1/W1	V1/W1	7/32" - 9/32"	N/A	6/32" - 7/32"	6/32" - 7/32"	N/A	N/A	N/A	7/32" - 9/32"	
A-XA/XB/XC	XA/XB/XC	N/A	3/16" RAISED AND INSCRIBED	N/A	N/A	N/A	N/A	N/A	N/A	
A-YA	YA	N/A	3/16" RAISED AND INSCRIBED	N/A	N/A	N/A	N/A	N/A	N/A	
A-Z1	Z1	N/A	N/A	N/A	N/A	3/32"	3/32"	N/A	3/32"	

DEPTH BY TYPE

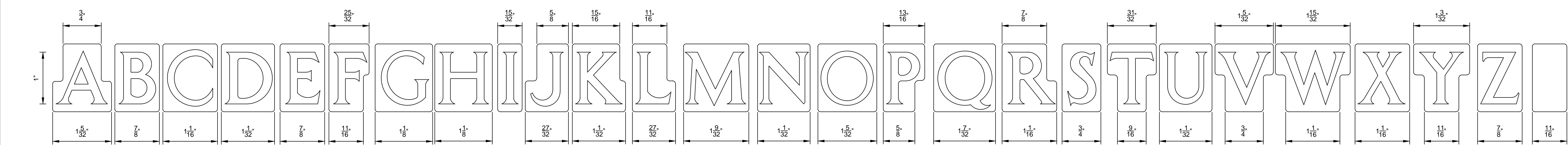
NOTE: AS OF OCTOBER 1, 2013 THE DEPTHS SURROUNDED BY BOLD BORDERS SUPERCEDE DEPTHS WHICH WERE PREVIOUSLY SPECIFIED AND MUST BE FOLLOWED IN LIEU OF DEPTHS SHOWN IN DRAWINGS RELATED TO SPECIFIC MONUMENT TYPES.



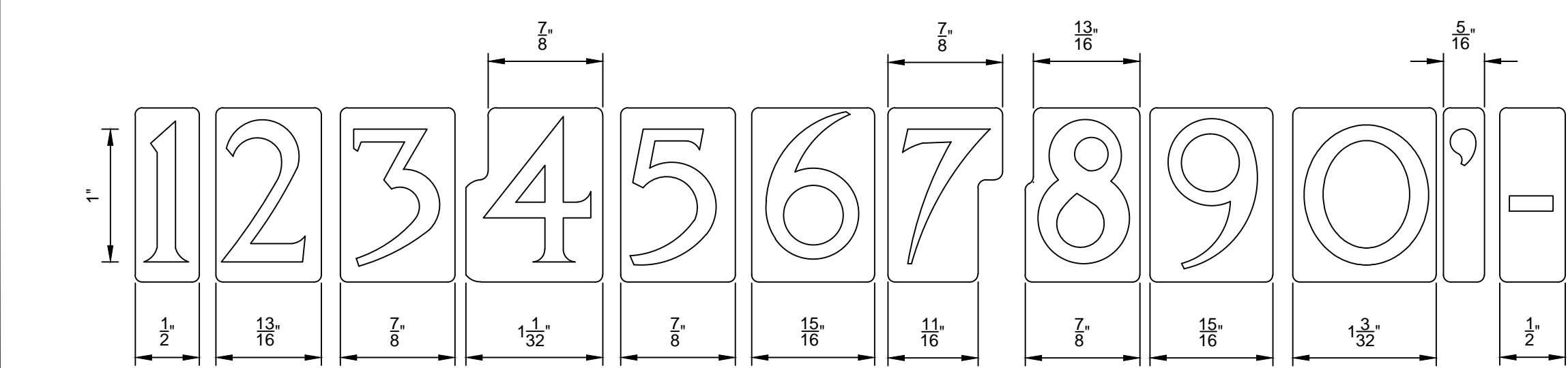
ITEM L-1



ITEM L-1 CONTINUED



ITEM L-2



ITEM L-2 CONTINUED

B

ADDED L5 & L6 & L7 FONTS, UPDATED INSCRIPTION TABLE. ADD SHT 2 & 3

11/26/13

A

MOVED INCISED DETAILS TO SHT 2, DELETED EMBLEM 50, ADDED ACCENT MARKS & CHARACTERS

03-01-07

-

SUPERSEDES DRAWING ID-4 DATED 12-2-99

06/05/03

Revisions

Date

GENERAL NOTES

1. FOR MARBLE AND GRANITE NICHE COVERS, SMALL CAPITAL LETTERS WILL BE USED IN THE FOLLOWING MANNER:
FOR "C" IN MC DONALD, "AC" IN MAC DONALD, "R" IN JR, "2D" IN 2D, "LIEUTENANT, "LT" IN 1ST, "LIEUTENANT, ETC. THEY WILL HAVE THE SAME DEPTH OR RISE AS THE LARGE LETTERS. THE SIZE OF THE LETTERING WILL BE ITEM L-3 WHEN USED WITH ITEM L-1 AND ITEM L-4 WHEN USED WITH ITEM L-3.

2. THE COTR MAY PROVIDE WRITTEN APPROVAL TO SLIGHTLY REVISE THE CENTER AREA OF LETTERS, NUMBERS, AND OTHER CHARACTERS TO PREVENT BLOWOUT.

NATIONAL CEMETERY ADMINISTRATION

Drawing Title
LETTERS, FONTS, NUMBERS & OTHER CHARACTERS

Approved: Director, Memorial Programs Service
Signed

Approved: Chief of Operations, Memorial Programs Service
Signed

Project Title
GOVERNMENT HEADSTONES, MARKERS, AND NICHE COVERS

Marker Type
REFER TO DEPTH CHART

Location
A-LFN&OC-1.DWG 24" x 36" SHEET

Date
NOVEMBER 26, 2013

Project No.

DRAWING NO.
A-LFN&OC-1

Sheet 1 of 3