

A

B

C

D

E

F

G

A

B

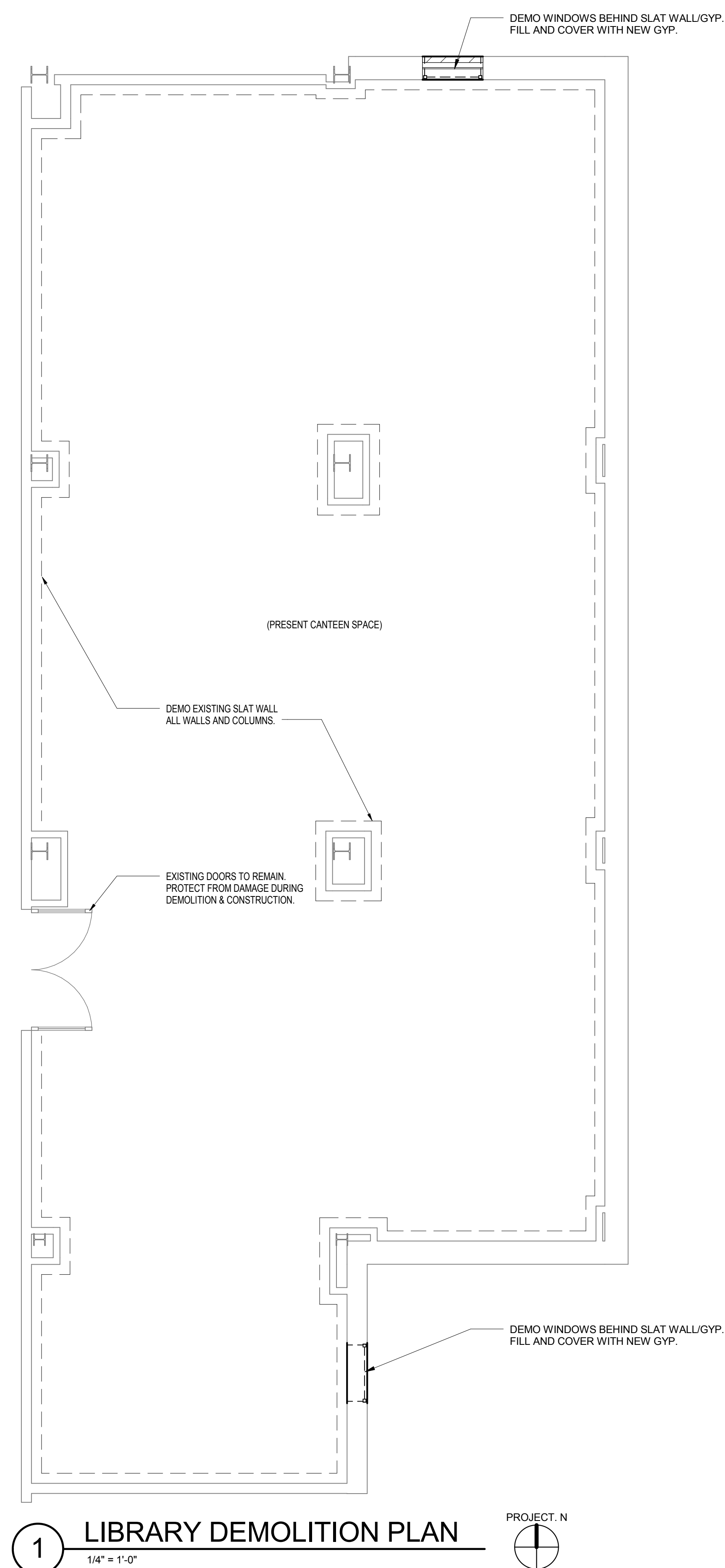
C

D

E

F

G



GENERAL DEMOLITION NOTES

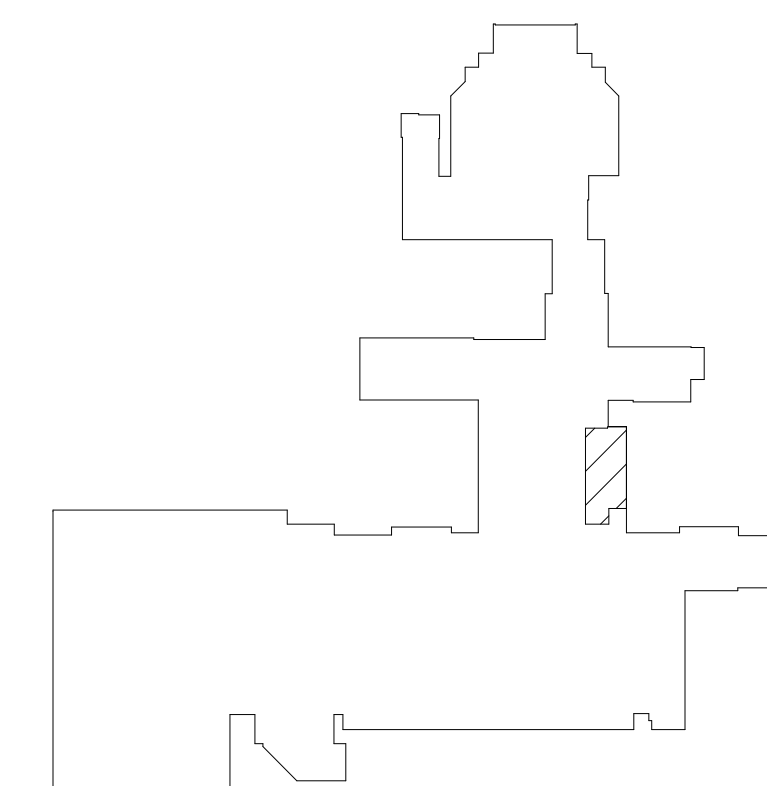
1/4" = 1'-0"

- 1) DEMO ALL FLOORING, LEVEL AND PREPARE SUB FLOOR FOR NEW FLOORING PER MANUFACTURERS RECOMMENDATIONS.
- 2) DEMO EXISTING CEILING GRID, ACT, LIGHT FIXTURES AND DIFFUSER GRILLS. REFERENCE MEP DRAWINGS FOR MORE DETAILED INFORMATION & LOCATIONS.

DEMOLITION LEGEND

1/4" = 1'-0"

- == == == == INTERIOR WALL OR ITEM TO BE REMOVED
- == ==
DOOR AND FRAME TO BE REMOVED
- ===== INTERIOR WALL OR ITEM TO BE REMAIN



1 LIBRARY DEMOLITION PLAN

$$1/4'' = 1'-0''$$


ARCHITECTS/ENGINEERS/CONSULTANTS:

[illegible]

$$\frac{1}{4}'' = 1'-0''$$

1) DEMO ALL FLOORING. LEVEL AND PREPARE SUB FLOOR FOR NEW FLOORING PER MANUFACTURERS RECOMMENDATIONS.

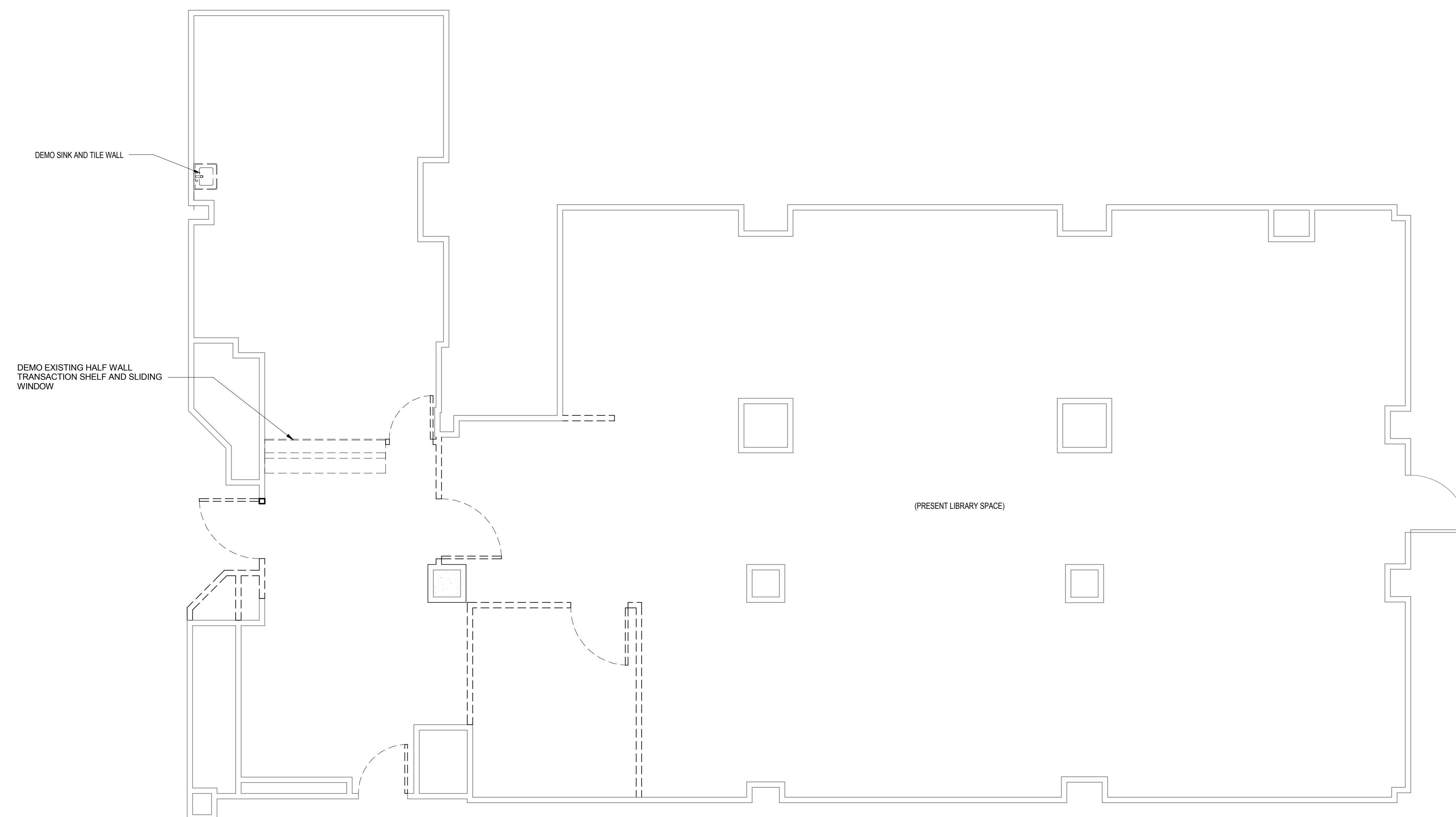
2) DEMO EXISTING CEILING GRID, ACT, LIGHT FIXTURES AND DIFFUSER GRILLS. REFERENCE MEP DRAWINGS FOR MORE DETAILED INFORMATION & LOCATIONS.

$$\frac{1}{4}'' = 1'-0''$$

— — — — — INTERIOR WALL OR ITEM TO BE REMOVED

DOOR AND FRAME TO BE REMOVED

____ INTERIOR WALL OR ITEM TO BE REMAIN



1 CANTEN DEMOLITION PLAN



100% Construction Documents	
99% Construction Documents	
65% Design Development	03/22/2013
35% Schematic Design	09/24/2012
Revisions:	

ARCHITECT

SPUR DESIGN
7700 NORTH HURON
SUITE 9
OKLAHOMA CITY, OK 73121
405.462.1111
www.spurdesign.com

MEP ENGINEER

PROJECT SOLU

2005 W. BROADWAY
SUITE 210
COLUMBIA, MO 65203

CIVIL ENGINEER

SPUR DESIGN, LLC
7700 NORTH HUDSON AVE
SUITE 9
OKLAHOMA CITY, OK 73116

STRUCTURAL ENGINEER

SPUR DESIGN, LLC
7700 NORTH HUDSON AVE
SUITE 9
OKLAHOMA CITY, OK 73116

COST ESTIMATOR

SPUR DESIGN, LLC
7700 NORTH HUDSON AVE
SUITE 9
OKLAHOMA CITY, OK 73116

[illegible]

7700 NORTH HUDSON, SUITE 100
OKLAHOMA CITY, OK 73111
PHONE: 405.842.6100
WWW.SPIR-DESIGN.COM

Drawing Title
**CANTEEN DEMOLITION
PLAN**

Medical Center Director

Chief Engineer

Project Title	CANTEEN AND LIBRARY
---------------	---------------------

Location	OKLAHOMA CITY VAMC
----------	--------------------

Date
4/28/2014

Project Number	635-12-314
----------------	------------

Building Number

Building Number

Drawing Number

Checked	GAR
---------	-----

Drawn	EKC
-------	-----

AD-102

Office of
Construction
and Facilities
Management



A

B

C

D

E

F

G

A

B

C

D

E

F

G

GENERAL DEMOLITION NOTES

1/4" = 1'-0"

- 1) DEMO ALL FLOORING. LEVEL AND PREPARE SUB FLOOR FOR NEW FLOORING PER MANUFACTURERS RECOMMENDATIONS.
- 2) DEMO EXISTING CEILING GRID, ACT, LIGHT FIXTURES AND DIFFUSER GRILLS. REFERENCE MEP DRAWINGS FOR MORE DETAILED INFORMATION & LOCATIONS.

DEMOLITION LEGEND

1/4" = 1'-0"

--- INTERIOR WALL OR ITEM TO BE REMOVED

DOOR AND FRAME TO BE REMOVED

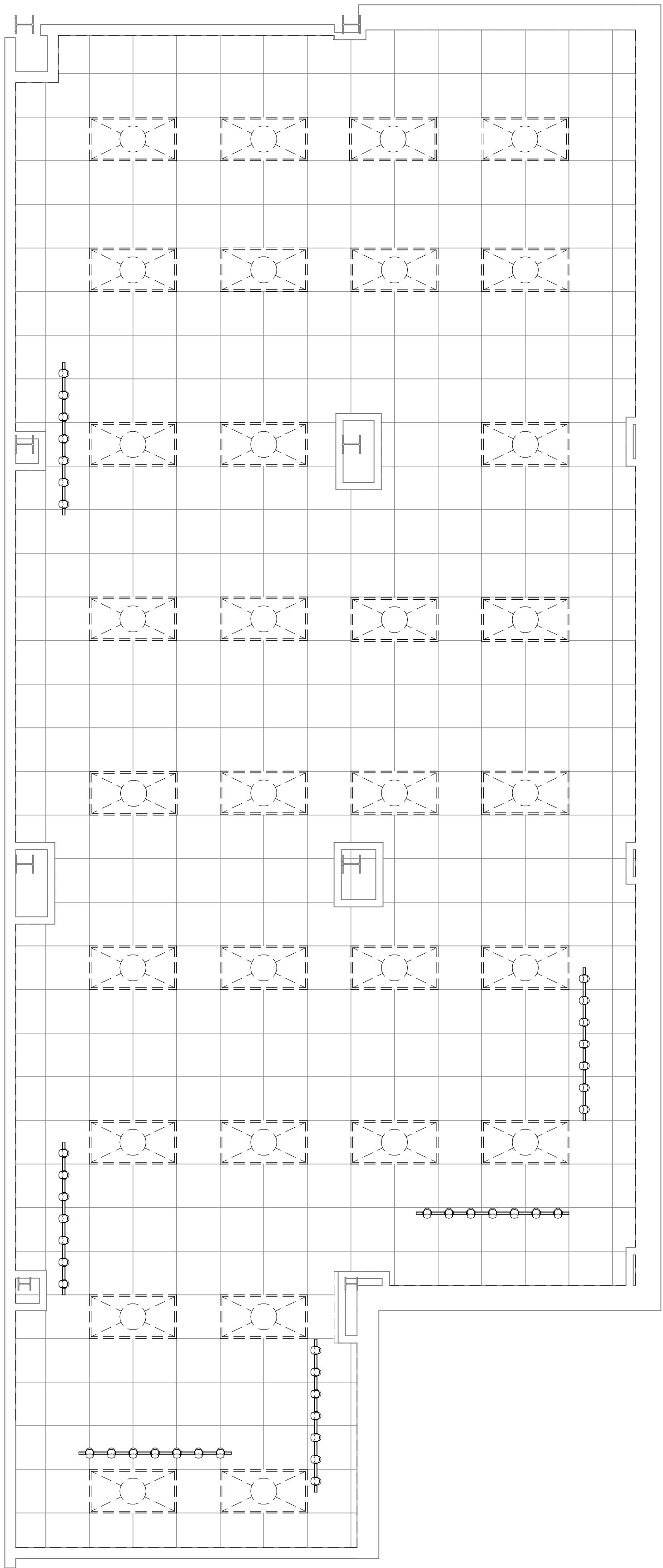
===== INTERIOR WALL OR ITEM TO BE REMAIN

DEMO LIGHTING LEGEND

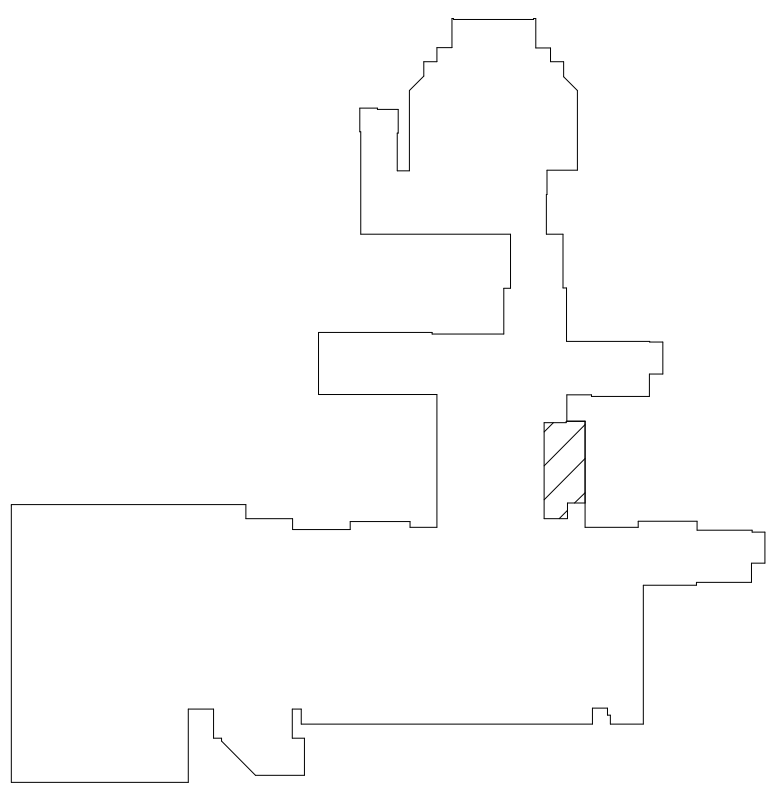
2 X 4 TROFFER

1 X 4 TROFFER

TRACK LIGHTING



1 LIBRARY RCP DEMOLITION PLAN
1/4" = 1'-0"



ARCHITECTS/ENGINEERS/CONSULTANTS:

100% Construction Documents	
99% Construction Documents	
65% Design Development	03/22/2013
35% Schematic Design	09/24/2012
Revisions:	

ARCHITECT
SPUR DESIGN, LLC
7700 NORTH HUDSON AVE
SUITE 9
OKLAHOMA CITY, OK 73116

MEP ENGINEER
PROJECT SOLUTIONS
2005 W. BROADWAY
SUITE 210
COLUMBIA, MO 65203

CIVIL ENGINEER
SPUR DESIGN, LLC
7700 NORTH HUDSON AVE
SUITE 9
OKLAHOMA CITY, OK 73116

STRUCTURAL ENGINEER
SPUR DESIGN, LLC
7700 NORTH HUDSON AVE
SUITE 9
OKLAHOMA CITY, OK 73116

COST ESTIMATOR
SPUR DESIGN, LLC
7700 NORTH HUDSON AVE
SUITE 9
OKLAHOMA CITY, OK 73116



Drawing Title LIBRARY REFELCTED CEILING DEMOLITION PLAN
Medical Center Director
Chief Engineer

Project Title CANTEEN AND LIBRARY
Location OKLAHOMA CITY VAMC
Date 4/28/2014
Checked GAR
Drawn EKC

Project Number 635-12-314
Building Number
Drawing Number AD-201



A

B

C

D

E

F

G

GENERAL DEMOLITION NOTES

1/4" = 1'-0"

- 1) DEMO ALL FLOORING, LEVEL AND PREPARE SUB FLOOR FOR NEW FLOORING PER MANUFACTURERS RECOMMENDATIONS.
- 2) DEMO EXISTING CEILING GRID, ACT, LIGHT FIXTURES AND DIFFUSER GRILLS. REFERENCE MEP DRAWINGS FOR MORE DETAILED INFORMATION & LOCATIONS.

DEMOLITION LEGEND

1/4" = 1'-0"

--- INTERIOR WALL OR ITEM TO BE REMOVED

--- DOOR AND FRAME TO BE REMOVED

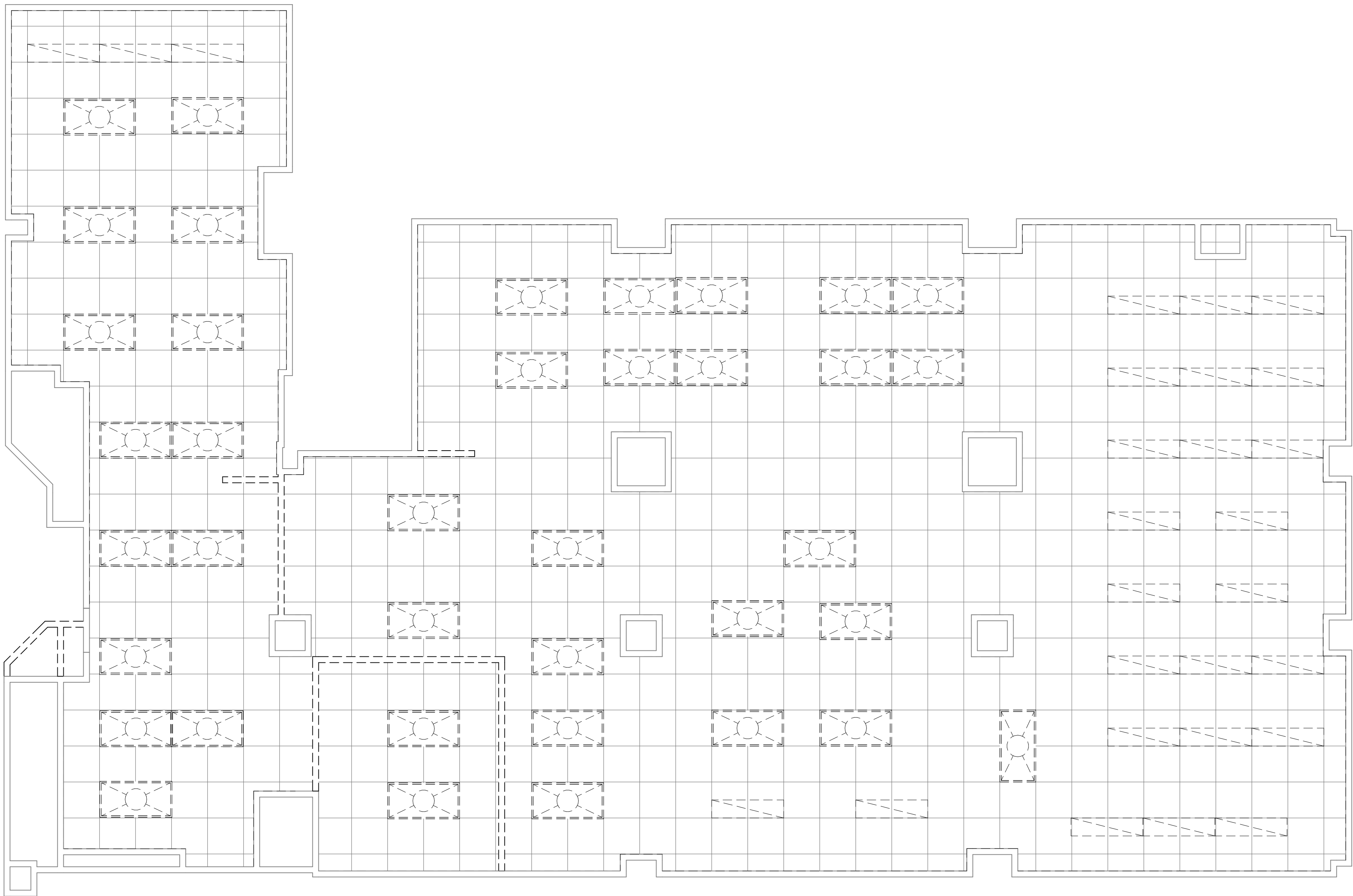
=== INTERIOR WALL OR ITEM TO BE REMAIN

DEMO LIGHTING LEGEND

2 X 4 TROFFER

1 X 4 TROFFER

TRACK LIGHTING



1 CANTEN RCP DEMOLITION PLAN
1/4" = 1'-0"



ARCHITECTS/ENGINEERS/CONSULTANTS:

100% Construction Documents	
99% Construction Documents	
65% Design Development	03/22/2013
35% Schematic Design	09/24/2012
Revisions:	

ARCHITECT

SPUR DESIGN, LLC
7700 NORTH HUDSON AVE
SUITE 9
OKLAHOMA CITY, OK 73116

MEP ENGINEER

PROJECT SOLUTIONS
2005 W. BROADWAY
SUITE 210
COLUMBIA, MO 65203

CIVIL ENGINEER

SPUR DESIGN, LLC
7700 NORTH HUDSON AVE
SUITE 9
OKLAHOMA CITY, OK 73116

STRUCTURAL ENGINEER

SPUR DESIGN, LLC
7700 NORTH HUDSON AVE
SUITE 9
OKLAHOMA CITY, OK 73116

COST ESTIMATOR

SPUR DESIGN, LLC
7700 NORTH HUDSON AVE
SUITE 9
OKLAHOMA CITY, OK 73116



OKLAHOMA CERTIFICATE OF AUTHORITY: 02295



7700 NORTH HUDSON, SUITE 9
OKLAHOMA CITY, OK 73116
PHONE: 405.842.6100
WWW.SPUR-DESIGN.COM

Drawing Title	CANTEN REFLECTED CEILING DEMOLITION PLAN
Medical Center Director	
Chief Engineer	

Project Title	CANTEN AND LIBRARY
Location	OKLAHOMA CITY VAMC
Date	4/28/2014
Checked	GAR
Drawn	EKC

Project Number	635-12-314
Building Number	
Drawing Number	AD-202

Office of
Construction
and Facilities
Management



1

2

3

4

5

6

7

8

9

10

1/4" = 1'-0"

1) COORDINATE ALL CANTEN WORK WITH DRAWINGS PROVIDED BY VCS.

2) ALL TRACK LIGHTING TO BE INSTALLED BY VCS.

3) REFER MECHANICAL, ELECTRICAL AND FIRE PROTECTION DRAWINGS FOR MORE DETAILED INFORMATION AND LOCATIONS.

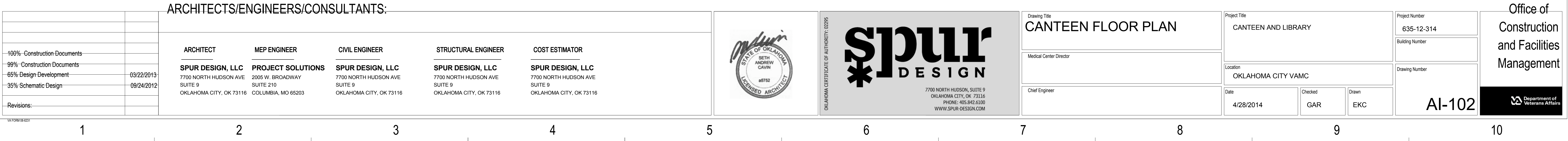
4) ALL FURNITURE ON DRAWINGS IS FOR REFERENCE ONLY. UNLESS NOTED OTHERWISE.

1/4" = 1'-0"

EXISTING WALL TO REMAIN

NEW WALL - TYPE "A" UNLESS NOTED OTHERWISE.

NEW DOOR - REF. DOOR TYPES & SCHEDULE.



A

B

C

D

E

F

G

GENERAL NOTES

1/4" = 1'-0"

1) COORDINATE ALL CANTEEN WORK WITH DRAWINGS PROVIDED BY VCS.

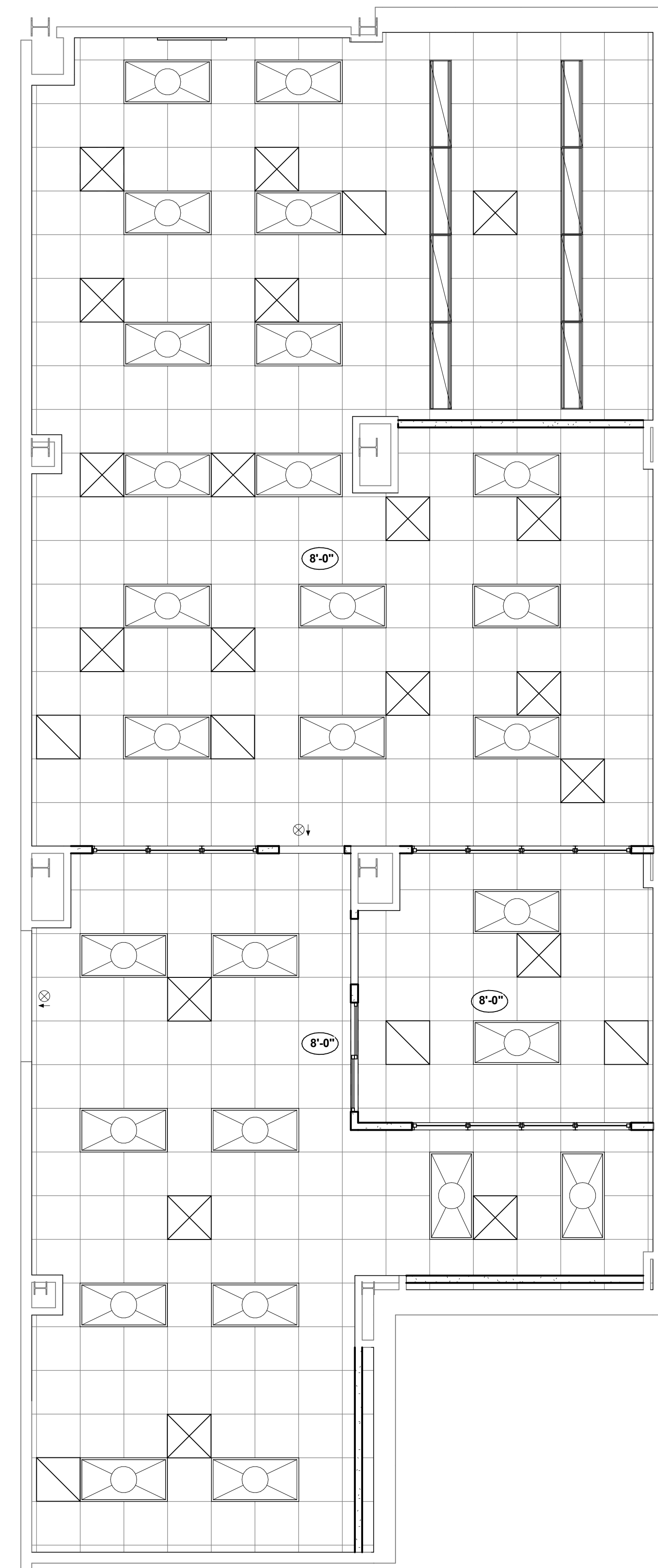
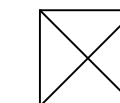
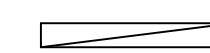
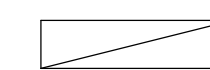
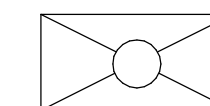
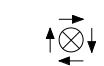
2) ALL TRACK LIGHTING TO BE INSTALLED BY VCS.

3) REFER MECHANICAL, ELECTRICAL AND FIRE PROTECTION DRAWINGS FOR MORE DETAILED INFORMATION AND LOCATIONS.

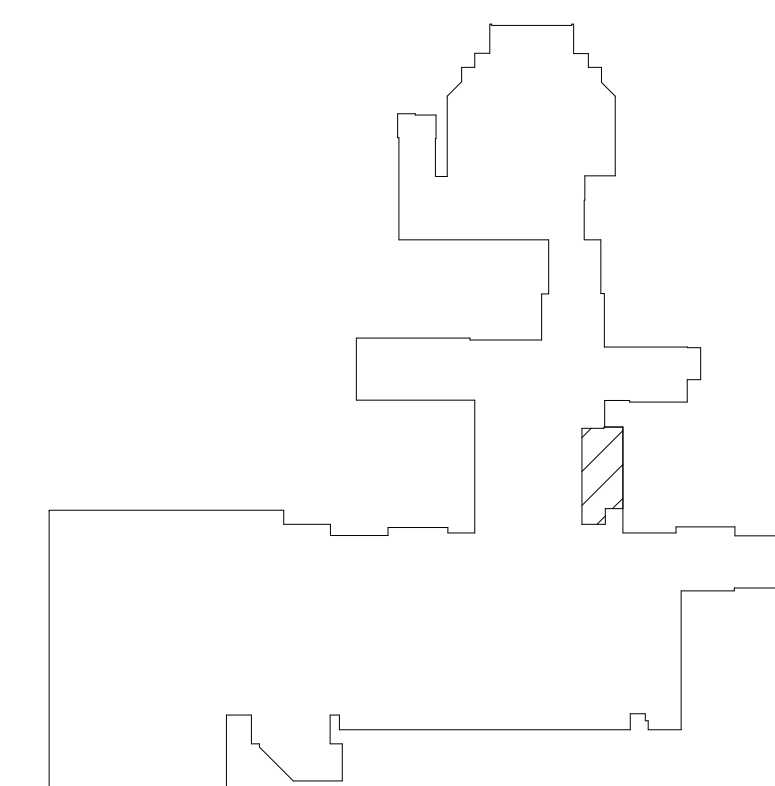
4) ALL FURNITURE ON DRAWINGS IS FOR REFERENCE ONLY,
UNLESS NOTED OTHERWISE.

CEILING LEGEND

1/4" = 1'-0"



1 LIBRARY REFLECTED CEILING PLAN

$$1/4^* = 1'-0$$


~~ARCHITECTS/ENGINEERS/CONSULTANTS:~~

[illegible]

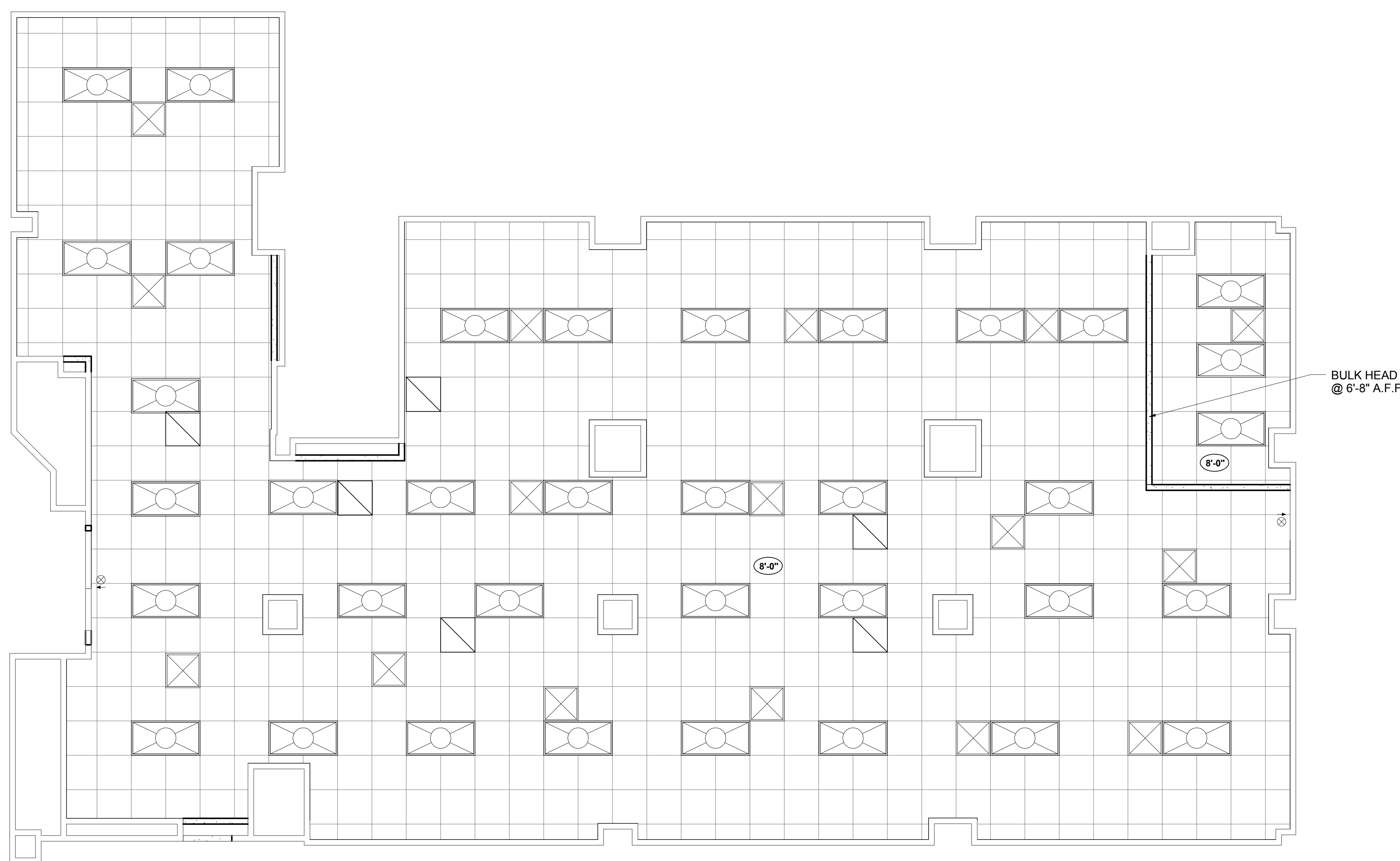
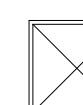
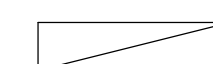
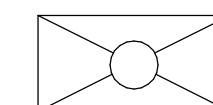
GENERAL NOTES

$$1/4'' = 1'-0''$$

- 1) COORDINATE ALL CANTEEN WORK WITH DRAWINGS PROVIDED BY VCS.
- 2) ALL TRACK LIGHTING TO BE INSTALLED BY VCS.
- 3) REFER MECHANICAL, ELECTRICAL AND FIRE PROTECTION DRAWINGS FOR MORE DETAILED INFORMATION AND LOCATIONS.
- 4) ALL FURNITURE ON DRAWINGS IS FOR REFERENCE ONLY, UNLESS NOTED OTHERWISE.

CEILING LEGEND

1/4" = 1'-0"



FIRST FLOOR - REFLECTED CEILING
PLAN

1/4" = 1'-0"



ARCHITECTS/ENGINEERS/CONSULTANTS:

[illegible]

A

B

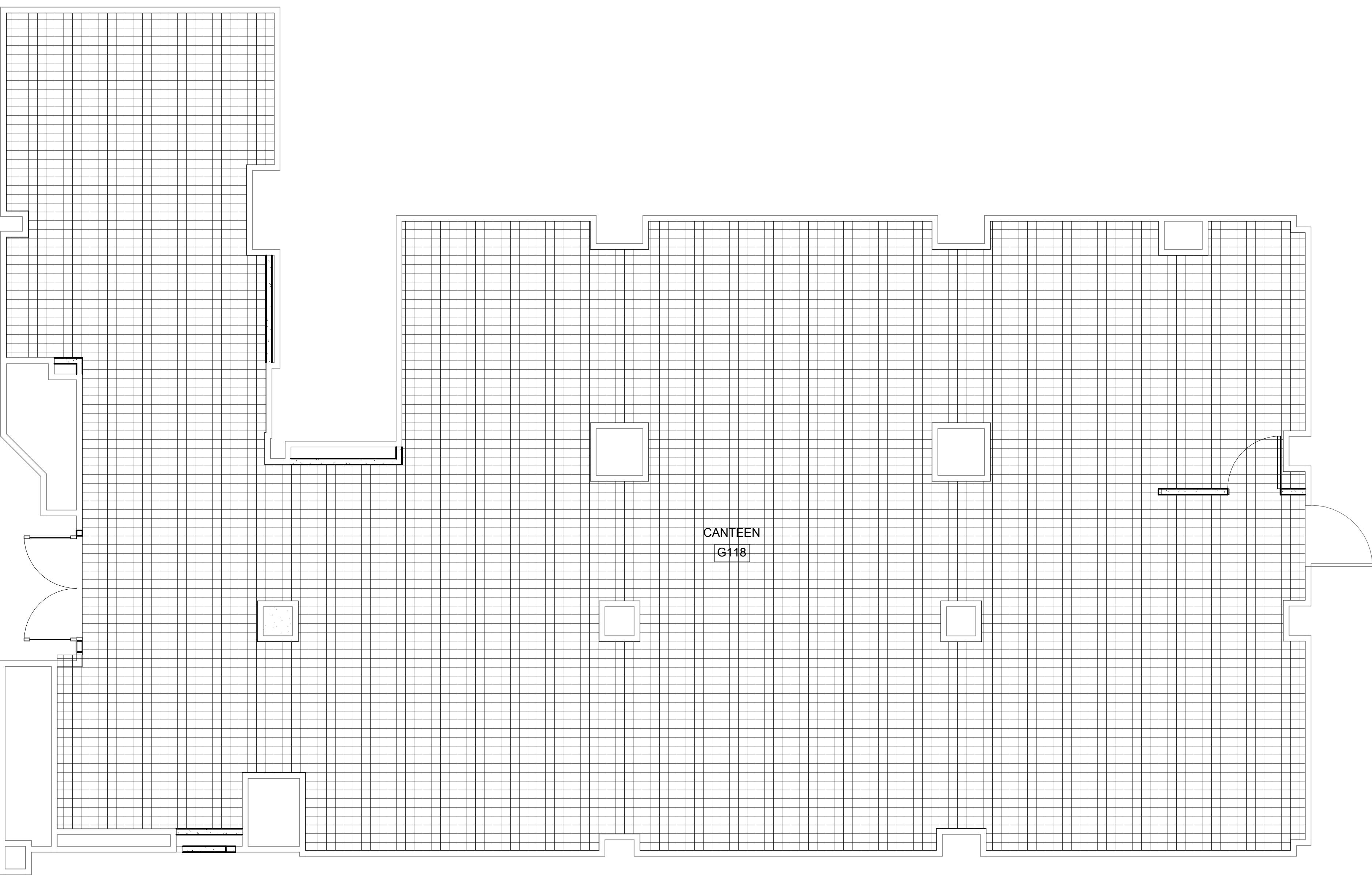
C

D

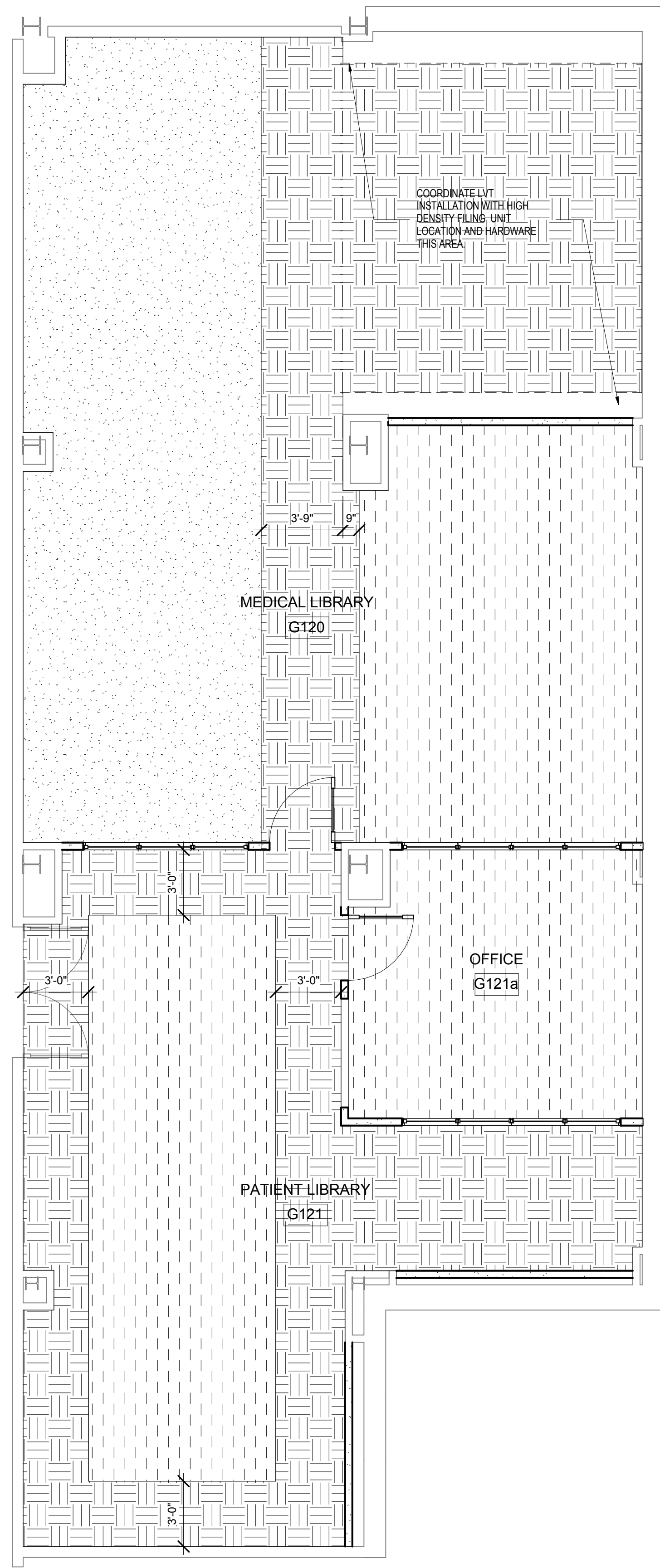
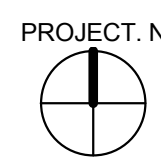
E

F

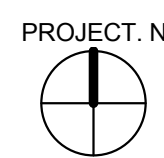
G



2 CANTEEN FLOOR FINISH PLAN
1/4" = 1'-0"



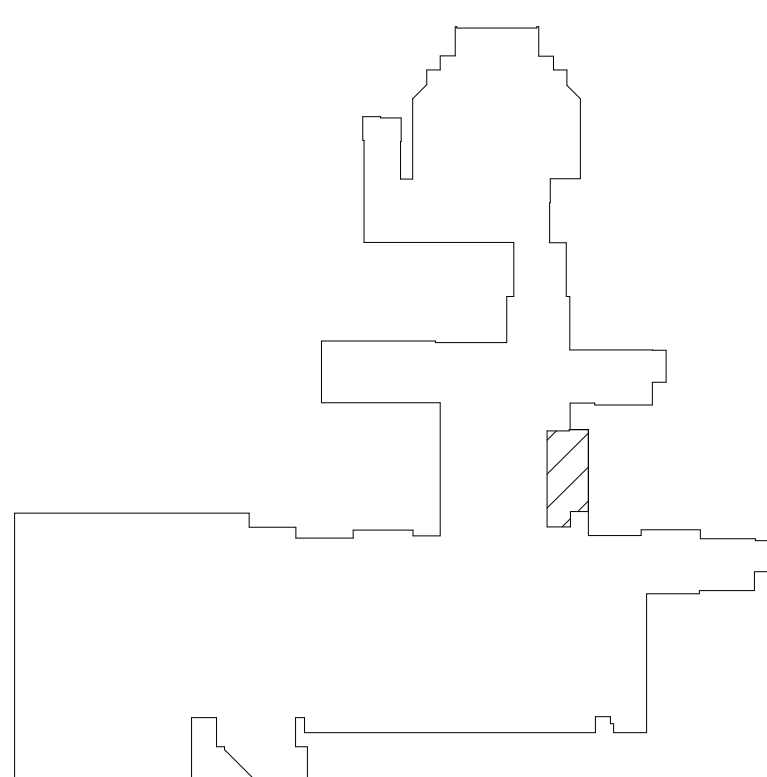
1 LIBRARY FLOOR FINISH PLAN
1/4" = 1'-0"



FLOOR FINISH LEGEND

1/8" = 1'-0"

- LUXURY VINYL TILE (LVT 1)
- LUXURY VINYL TILE (LVT 2)
- CARPET TILE
- LUXURY VINYL TILE (LVT 3) (CANTEEN ONLY)



ARCHITECTS/ENGINEERS/CONSULTANTS:

100% Construction Documents	
99% Construction Documents	
65% Design Development	03/22/2013
35% Schematic Design	09/24/2012
Revisions:	

ARCHITECT
SPUR DESIGN, LLC
7700 NORTH HUDSON AVE.
SUITE 9
OKLAHOMA CITY, OK 73116

MEP ENGINEER
PROJECT SOLUTIONS
2005 W. BROADWAY
SUITE 210
COLUMBIA, MO 65203

CIVIL ENGINEER
SPUR DESIGN, LLC
7700 NORTH HUDSON AVE.
SUITE 9
OKLAHOMA CITY, OK 73116

STRUCTURAL ENGINEER
SPUR DESIGN, LLC
7700 NORTH HUDSON AVE.
SUITE 9
OKLAHOMA CITY, OK 73116

COST ESTIMATOR
SPUR DESIGN, LLC
7700 NORTH HUDSON AVE.
SUITE 9
OKLAHOMA CITY, OK 73116



OKLAHOMA CERTIFICATE OF AUTHORITY: 02295

SPUR DESIGN

7700 NORTH HUDSON, SUITE 9
OKLAHOMA CITY, OK 73116
PHONE: 405.842.6100
WWW.SPUR-DESIGN.COM

Drawing Title FLOOR FINISH PLANS
Medical Center Director
Chief Engineer

Project Title CANTEEN AND LIBRARY
Location OKLAHOMA CITY VAMC
Date 4/28/2014
Checked GAR
Drawn EKC

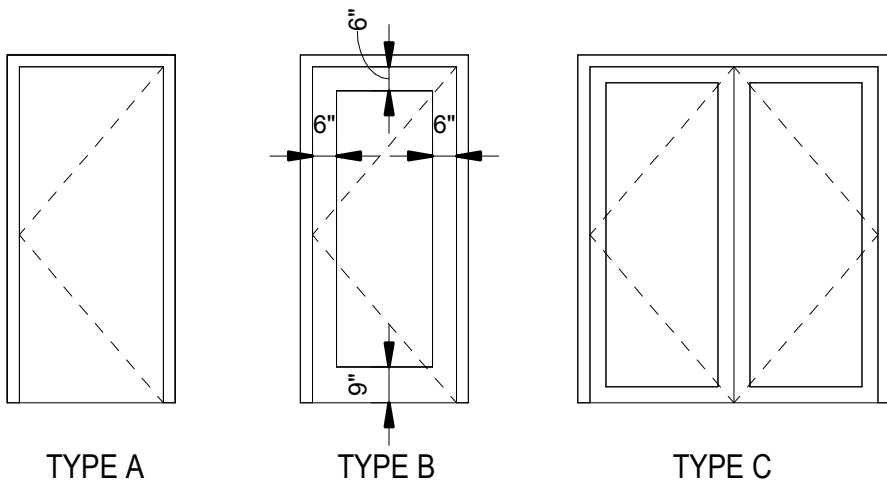
Project Number 635-12-314
Building Number
Drawing Number AI-301

Office of
Construction
and Facilities
Management

Department of
Veterans Affairs

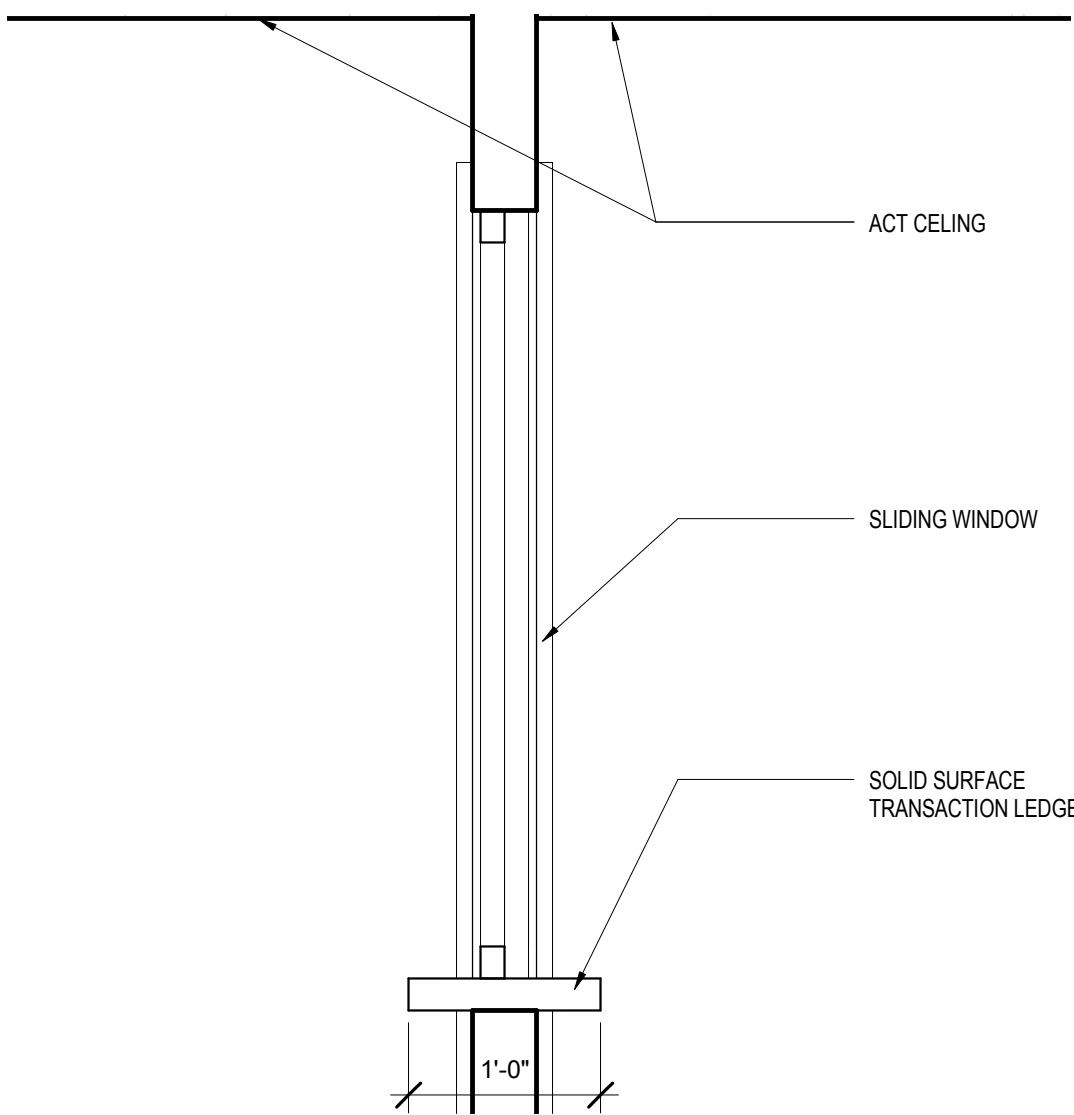
INTERIOR FINISH SCHEDULE										
NO.	ROOM NAME	FLOOR	BASE	WALL FINISH				CEILING		REMARKS
				NORTH	EAST	SOUTH	WEST	FINISH	HEIGHT	
G118	CANTEEN	LVT 3	RB 1	P3	P3	P3	P3	ACT 1	8'-0"	AMTICO AMERICAN CHERRY W745
G120	MEDICAL LIBRARY	CPT1/LVT1/LVT2	RB 1	P1	P1	P1	P1	ACT 1	8'-0"	REF. AI-301 FLOOR FINISH PLAN
G121	PATIENT LIBRARY	LVT1/LVT2	RB 1	P1	P1	P1	P1	ACT 1	8'-0"	REF. AI-301 FLOOR FINISH PLAN
G121a	OFFICE	LVT2	RB 1	P1	P1	P1	P1	ACT 1	8'-0"	

DOOR SCHEDULE										
Door Number	Type	DOOR			Material	Finish	FRAME		Hardware	Comments
		Width	Height	Thickness			Material	Finish		
G118	C	6'-0"	7'-0"	2"	SWD	STAIN	HM	P2		ADA PWR
G118A	A	3'-0"	7'-0"	2"	HM	P2	HM	P2		
G119	B	3'-0"	7'-0"	2"	SWD	STAIN	HM	P2		
G120d	B	3'-0"	7'-0"	2"	SWD	STAIN	HM	P2		
G121	C	6'-0"	7'-0"	2"	SWD	STAIN	HM	P2		ADA PWR
G126	E	3'-8"	7'-0"	2"						
G127	A	3'-0"	7'-0"	2"						
G128	D	3'-6"	7'-0"	2"						
G129	E	3'-8"	7'-0"	2"						
G130	10	2'-8"	7'-0"	2"						
G131	D	3'-6"	7'-0"	2"						



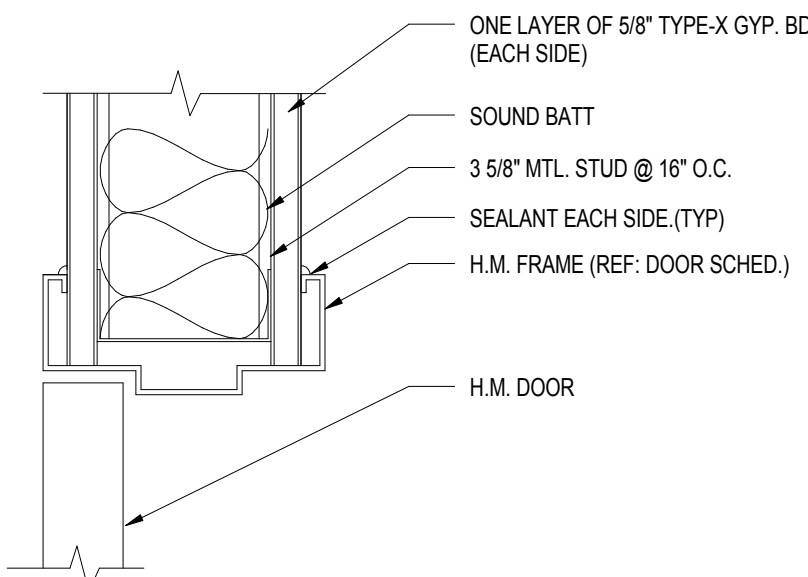
DOOR TYPES

1/4" = 1'-0"



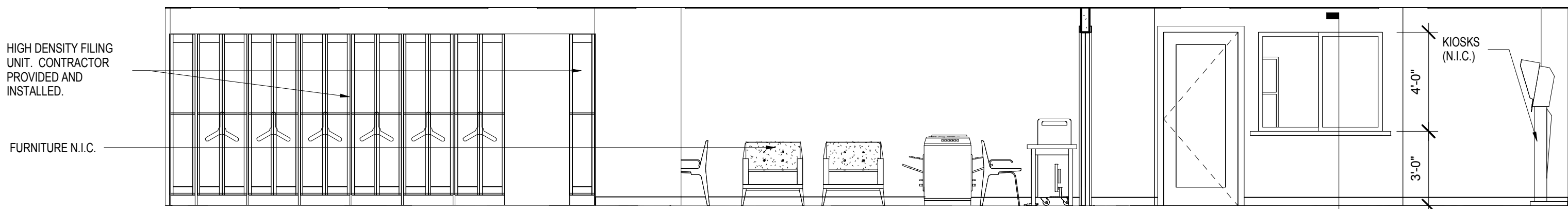
TRANSACTION WINDOW DETAIL

1" = 1'-0"



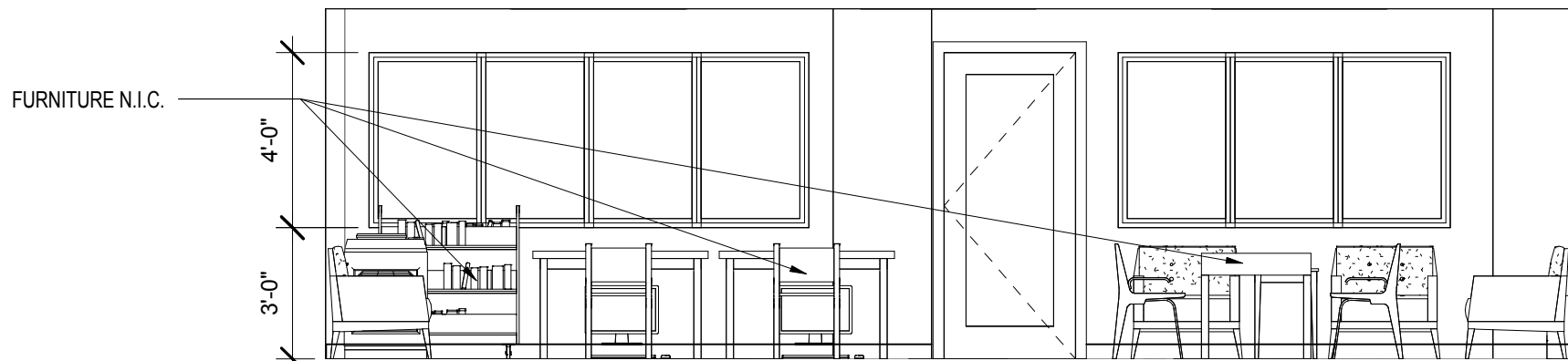
TYP. HEAD DETAIL

3" = 1'-0"



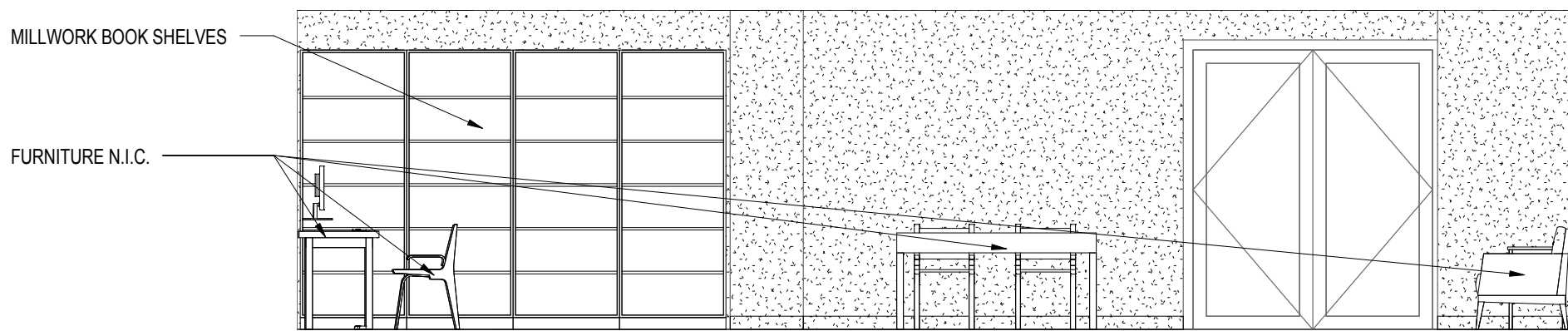
ELEVATION G120 EAST

1/4" = 1'-0"



ELEVATION G120 SOUTH

1/4" = 1'-0"



ELEVATION G121 WEST

1/4" = 1'-0"

ARCHITECTS/ENGINEERS/CONSULTANTS:

ARCHITECT		MEP ENGINEER		CIVIL ENGINEER		STRUCTURAL ENGINEER		COST ESTIMATOR	
SPUR DESIGN, LLC 7700 NORTH HUDSON AVE SUITE 9 OKLAHOMA CITY, OK 73116		PROJECT SOLUTIONS 2005 W. BROADWAY SUITE 210 COLUMBIA, MO 65203		SPUR DESIGN, LLC 7700 NORTH HUDSON AVE SUITE 9 OKLAHOMA CITY, OK 73116		SPUR DESIGN, LLC 7700 NORTH HUDSON AVE SUITE 9 OKLAHOMA CITY, OK 73116		SPUR DESIGN, LLC 7700 NORTH HUDSON AVE SUITE 9 OKLAHOMA CITY, OK 73116	



Drawing Title INTERIOR ELEVATIONS AND DETAILS	
Medical Center Director	
Chief Engineer	

Project Title CANTEEN AND LIBRARY	
Location OKLAHOMA CITY VAMC	
Date 4/28/2014	Checked GAR
Drawn EKC	

Project Number 635-12-314
Building Number
Drawing Number AI-501

