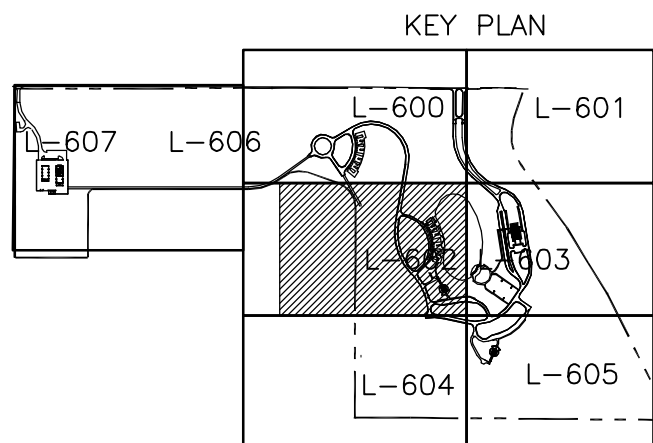
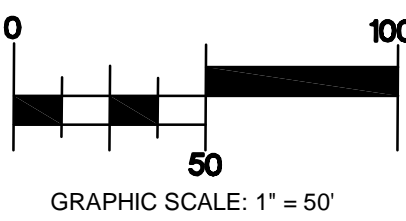
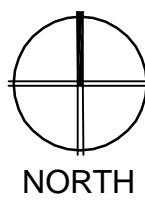



DRAINAGE AND UTILITY LEGEND

KEY	SITE ELEMENT	DETAIL REFERENCE
Ⓐ	4" Domestic Water Main (PE Pipe)	C3
Ⓑ	1" RP Backflow Device	E61V
Ⓒ	3/4" Service Tap, Valve and Box	
Ⓓ	2 1/2" Domestic Service	
Ⓔ	2 1/2" RP Backflow Device	C3 E61V E61V
Ⓕ	6" Perforated Crypt Underdrain	
Ⓖ	Roll Curb Inlet	E8 E609
Ⓗ	Field Inlet	F1 F1 E609
Ⓙ	Drop Inlet	
Ⓜ	Storm Drain Pipe	
Ⓚ	Pond Supply Line (Existing)	
Ⓛ	Connect to SID Turnout	
Ⓜ	Septic Disposal Field	Refer to Septic Plans
Ⓝ	Septic Disposal Field (Replacement)	Refer to Septic Plans
Ⓞ	Septic and Pretreatment Tank	Refer to Septic Plans
Ⓟ	Performance Well	Refer to Septic Plans
Ⓠ	4" ABS Waste Line	Refer to Septic Plans
Ⓡ	Watering Station	F1 F1 E61V
Ⓢ	Irrigation Main	
Ⓣ	16" Pond Suction Line	Refer to Planting Plan
Ⓤ	Outfall to Swale/ Inlet to Pump Sta.	F3 E609 E609
Ⓥ	Irrigation Pump and Filter Station	
Ⓦ	Detention Area	F4 E61V E61V
Ⓧ	Lift Pump (crypt underdrains)	F4 E609
Ⓩ	Gate Valve	
AA	Fast Track Drainage to be Abandoned with Construction of Phase I Drainage. See Grading Plans.	
AB	Cleanout (Storm or Sewer)	E9 E5 E609 E61V
AG	48" Storm Drain Manhole	
AD	60" Storm Drain Manhole	
AE	72" Storm Drain Manhole	
AF	Stand Pipe	E8 E609
AG	Storm Drain Lift Pump	
AH	Water Service Stub	
AI	Sewer Service Stub	
AJ	Area Drain	E8 E609
AK	Junction Box	F3 E609
AL	Barricade	D4 E61V
AM	48" Storm Drain Manhole w/ Roll Curb Inlet Frame & Grate	C1 E8 E609 E609
AN	Sampling Station	F7 E61V
AQ	60" Flat Top Storm Drain Manhole	C5 E609
AP	SID Turnout and Meter	C1 E61V
AQ	SID Spillway	C7 E61V
AR	4" Perforated Corrugated HDPE	F4 E61V E61V
AS	4" Domestic Water Backflow Preventer	
AT	4'x4" Screen Intake Box with Concrete Pad	B1 E61V
AU	20" Intake Line	
AV	2 1/2" Domestic Backflow Preventer	
AW	2" Blow Off Assembly	C5 E61V
AY	24" HDPE Pipe Culvert with Flared End Sections	
AZ	Flared End Sections per Pipe Diameter, ADS or Approved Equal	
BA	6" Ductile Iron Waterline Crossing	

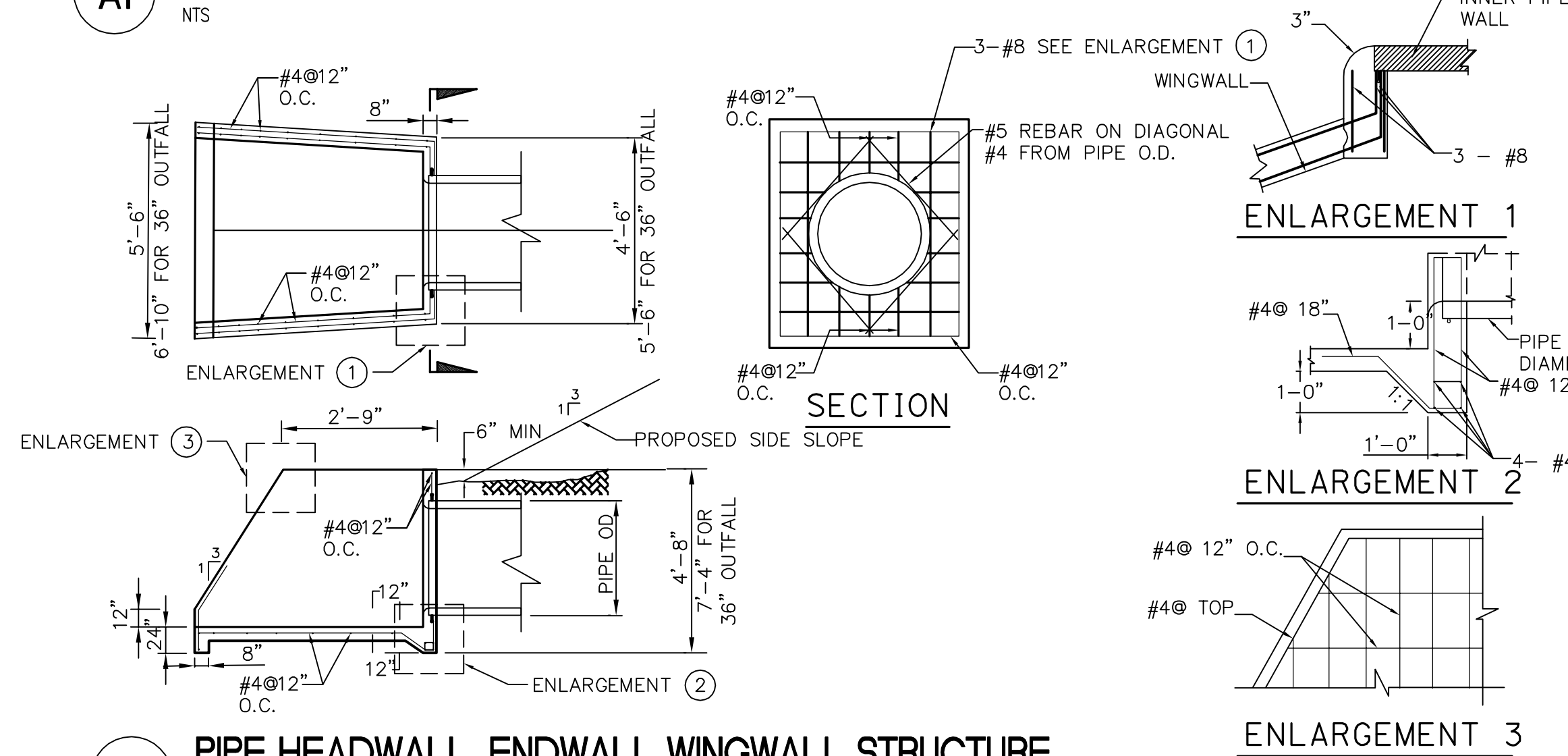


AS - BUILT DRAWINGS

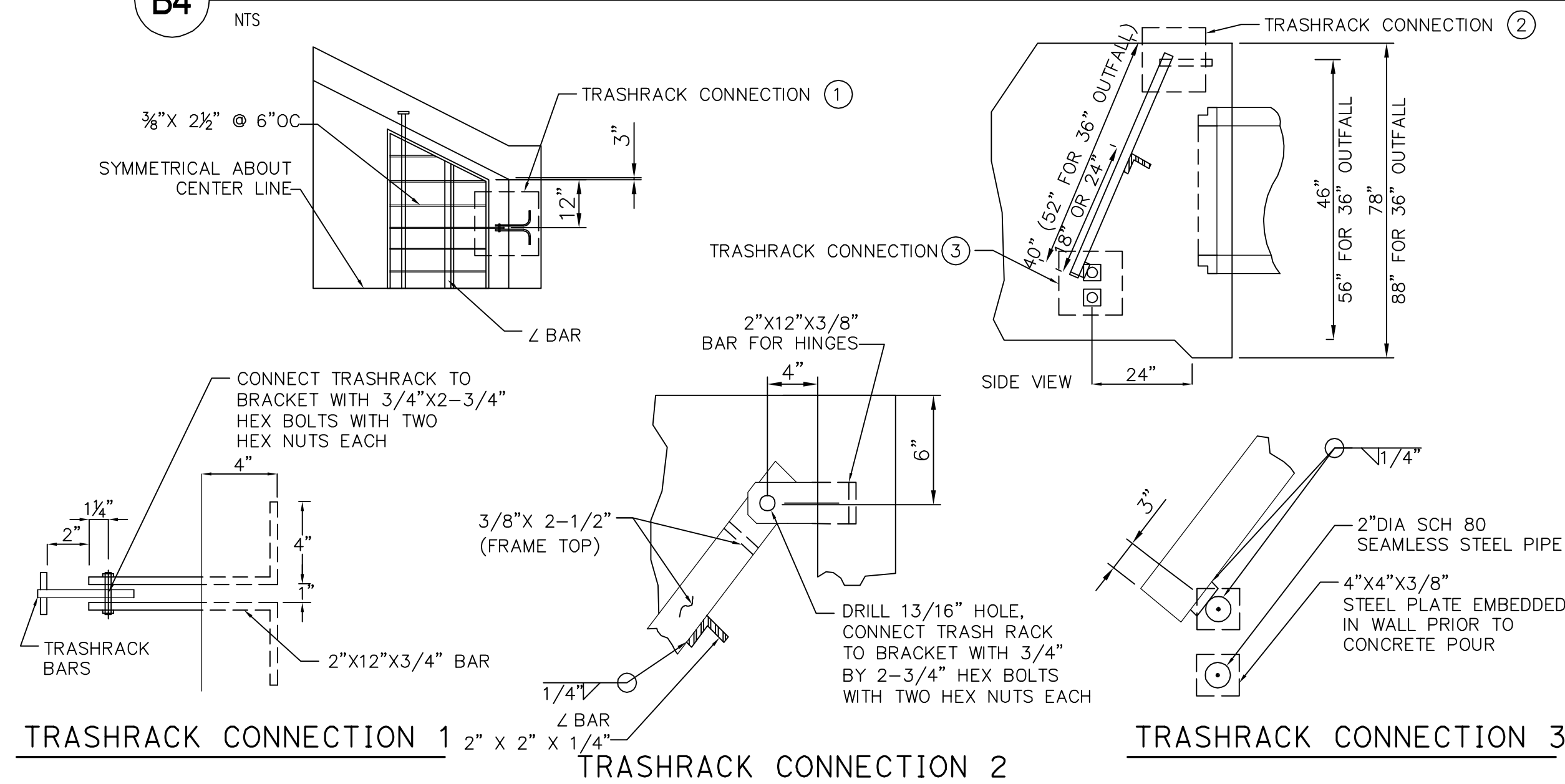
	MARCH 2010	AS-BUILT DRAWINGS	<div>CarterBurgess</div> <div>A Wholly Owned Subsidiary of Jacobs</div> <div>Consultants in Architecture, Engineering, Planning, and the Environment</div> <div>Sacramento Office 180 Promenade Circle, Suite 300 Sacramento, California 95834 (916) 929-3323 Fax (916) 929-1772</div>	Subconsultant List		<div></div> <div>N ATIONAL C EMETERY A DMINISTRATION</div>	Drawing Title		Project Title		Date:	
		PREPARED FROM AS-BUILT DRAWINGS PROVIDED BY CLARK & SULLIVAN, FEBRUARY, 2010. INFORMATION HAS NOT BEEN FIELD VERIFIED BY A/E.		DREYFUSS & BLACKFORD 3540 FOLSOM BLVD., SACRAMENTO, CA. 95816 (916) 453-1234	DRAINAGE & UTILITIES PLAN		NEW NATIONAL CEMETERY PHASE IB DEVELOPMENT		MARCH 2010			
				CAPITAL ENGINEERING CONSULTANTS 11020 SUN CENTER DR., STE. 100 RANCHO CORDOVA, CA. 95670 (916) 851-3500					Project No.			
				ECOM ENGINEERING CONSULTANTS 1796 TRIBUTE RD., SUITE 100, SACRAMENTO, CA. 95815 (916) 641-5600					921CM2001B			
				BUEHLER & BUEHLER ASSOCIATES 600 Q STREET, STE. 200, SACRAMENTO, CA. 95814 (916) 443-0303					DRAWING NO.			
			THE SIERRA WEST GROUP, LLC 2730 GATEWAY OAKS DRIVE, STE. 110 SACRAMENTO, CA. 95833 (916) 925-4000							L-602		
			MARCUS H. BOLE & ASSOCIATES 104 BLOCK DR. WHEATLAND, CA. 95692 (530) 633-0117							Dwg. 80 of 222		
			PAR ENVIRONMENTAL 1906 21ST STREET, SACRAMENTO, CA. 95816 (916) 739-8356									
			ESPANA GEOTECH CONSULTING (FUGRO) 502 GIUSEPPE CT., ROSEVILLE, CA. 95678 (916) 773-2600									
			PERRY DESIGN 2091 HIDDEN GOLD TRAIL, COOL, CA 95614 (530) 823-2621									
Revisions	Date						Approved: Director, Office of Construction Management		Building Number	Checked JAT	Drawn WWR	
							Approved: Director, Project Management Service		Location		SACRAMENTO VALLEY VA NATIONAL CEMETERY SOLANO COUNTY, CALIFORNIA	



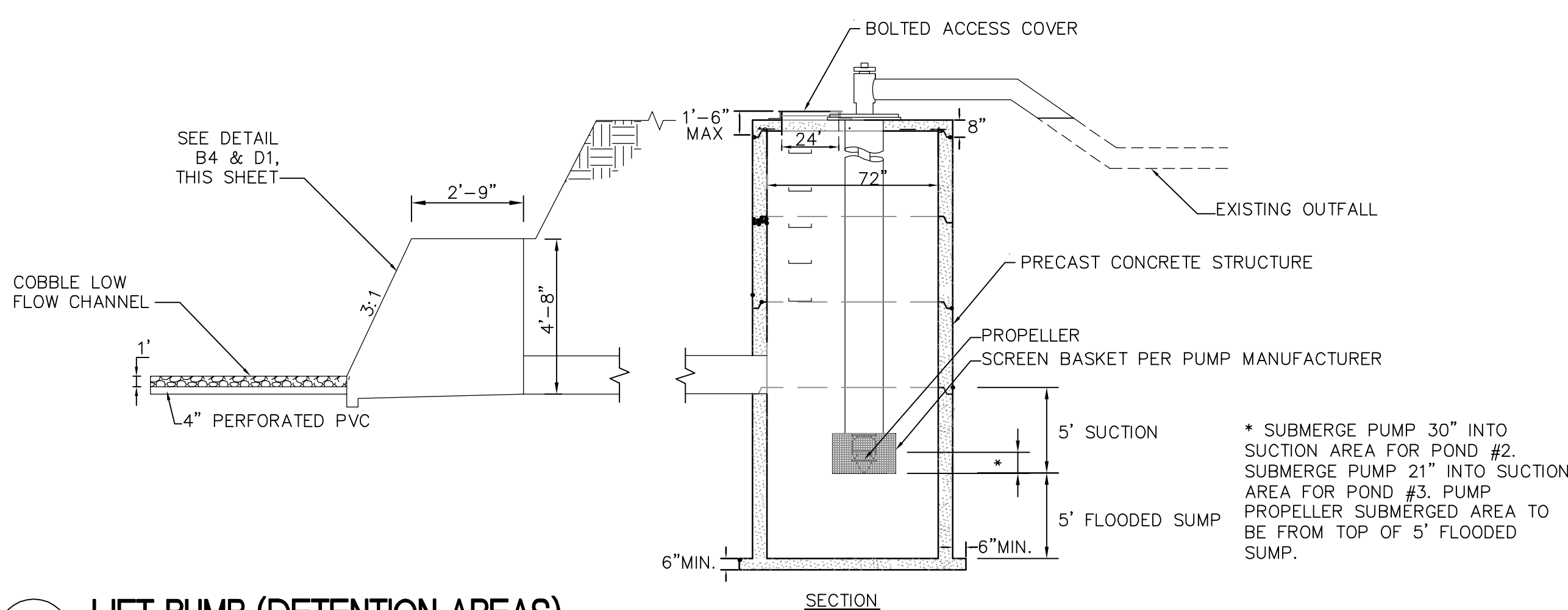
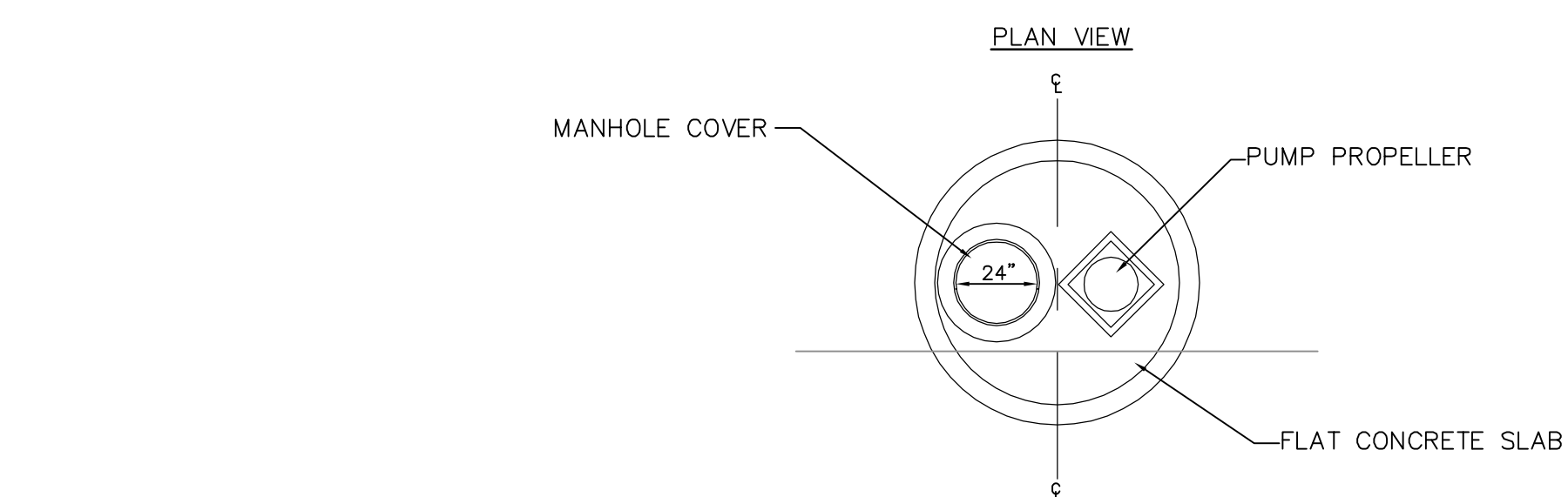
## A1 TYPICAL WET UTILITY PLACEMENT



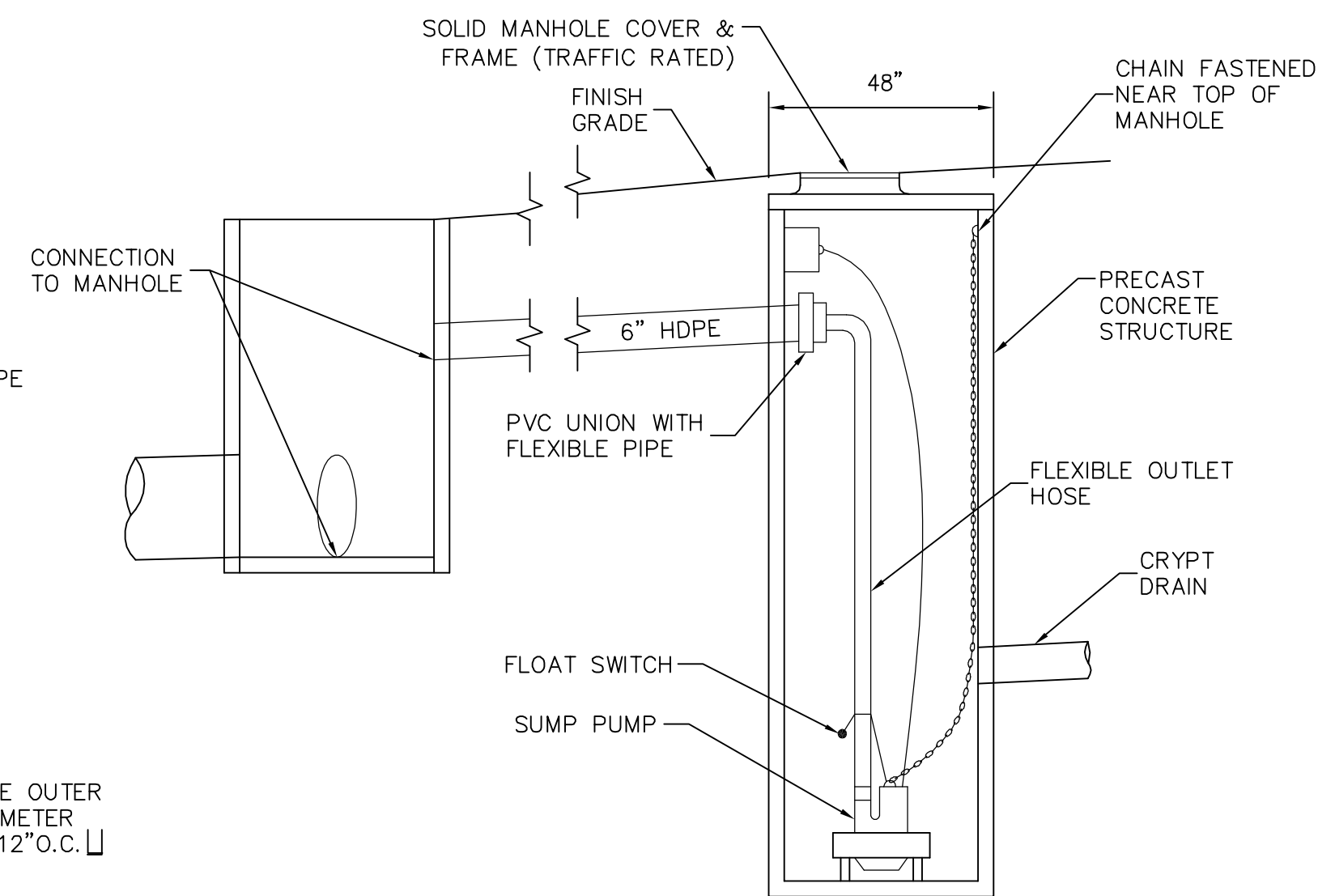
**R4** PIPE HEADWALL, ENDWALL WINGWALL STRUCTURE



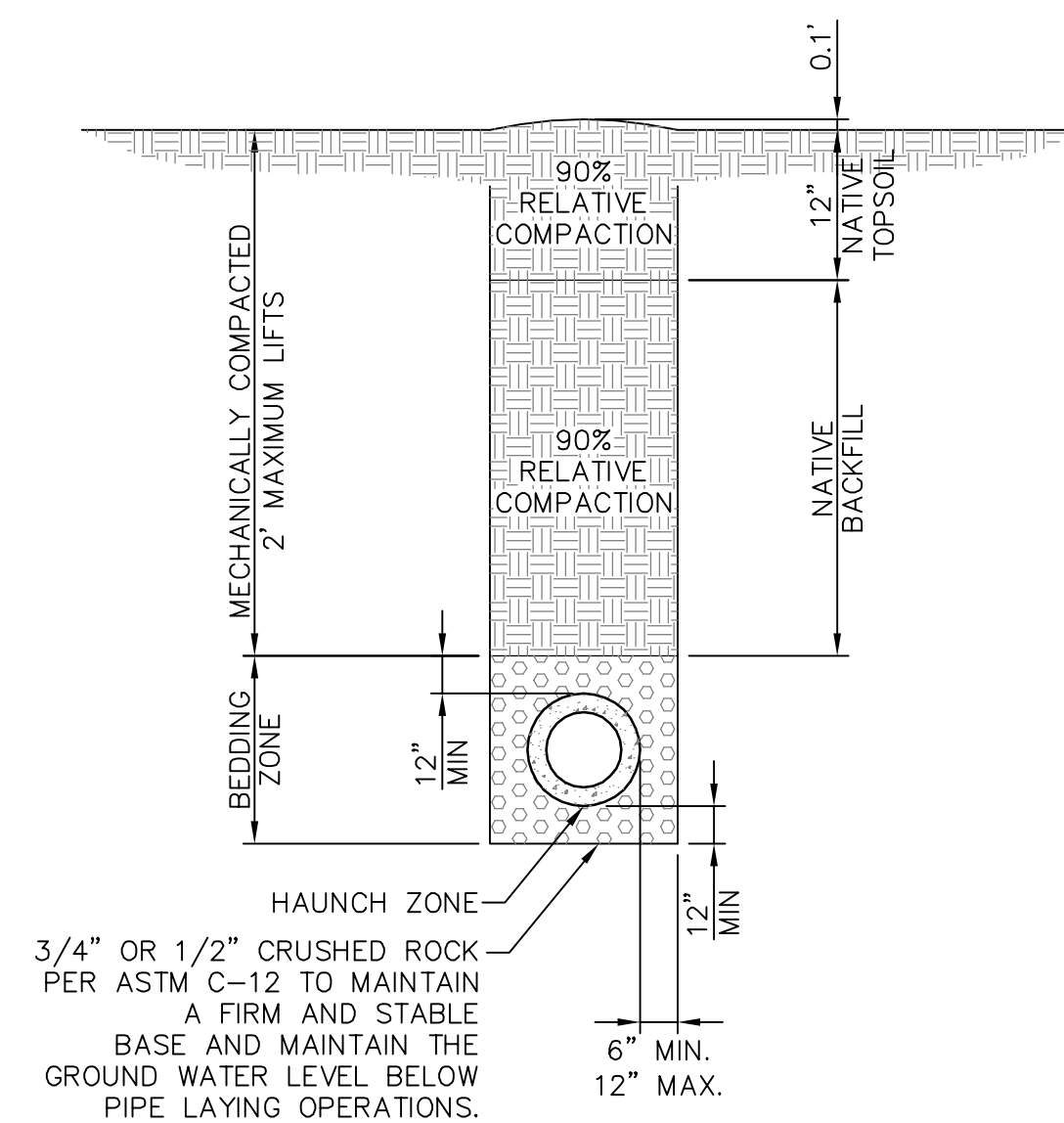
## D1 PIPE HEADWALL, ENDWALL AND WINGWALL STRUCTURE WITH TRASH RACK



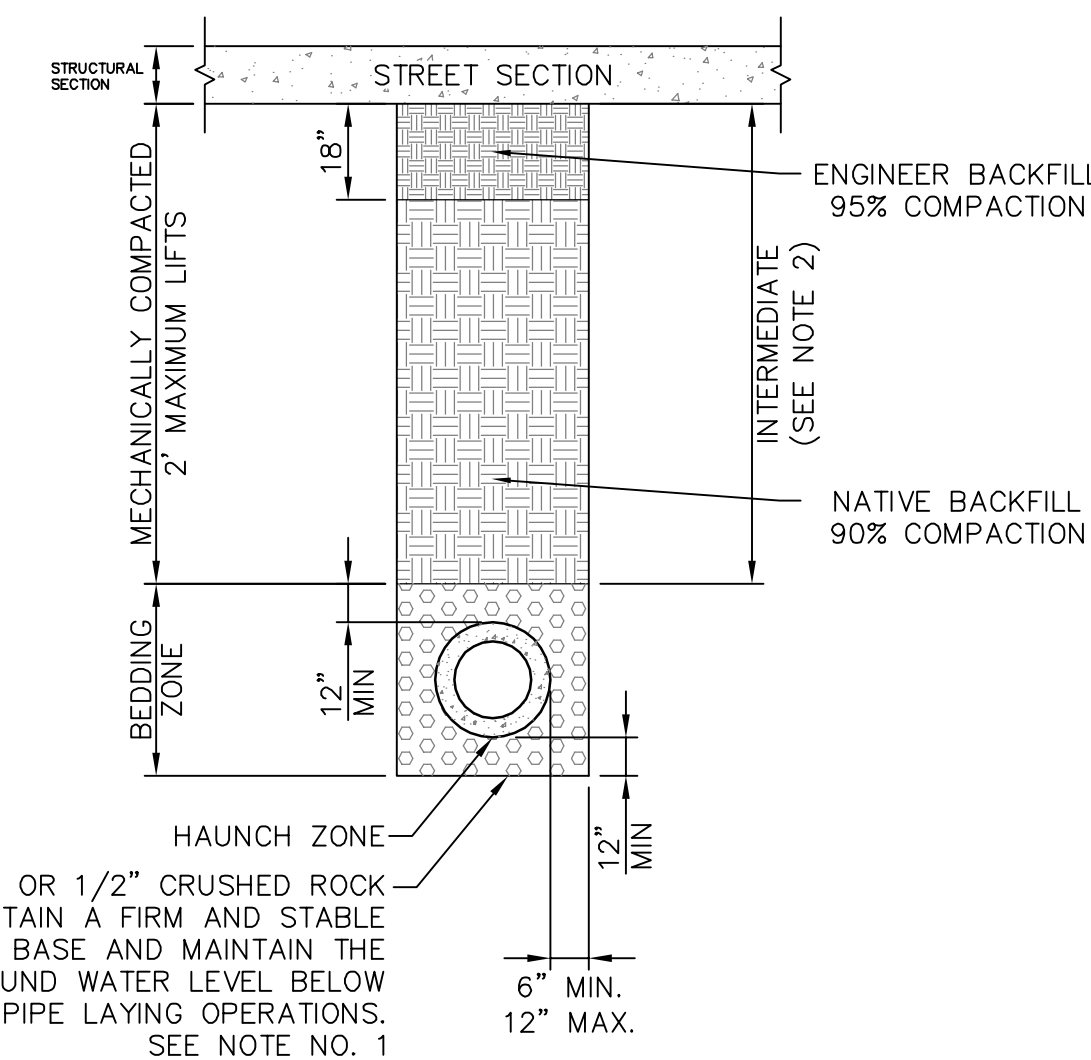
**E1 LIFT PUMP (DETENTION AREAS)**



**B4 LIFT PUMP (CRYPT UNDERDRAINS)**



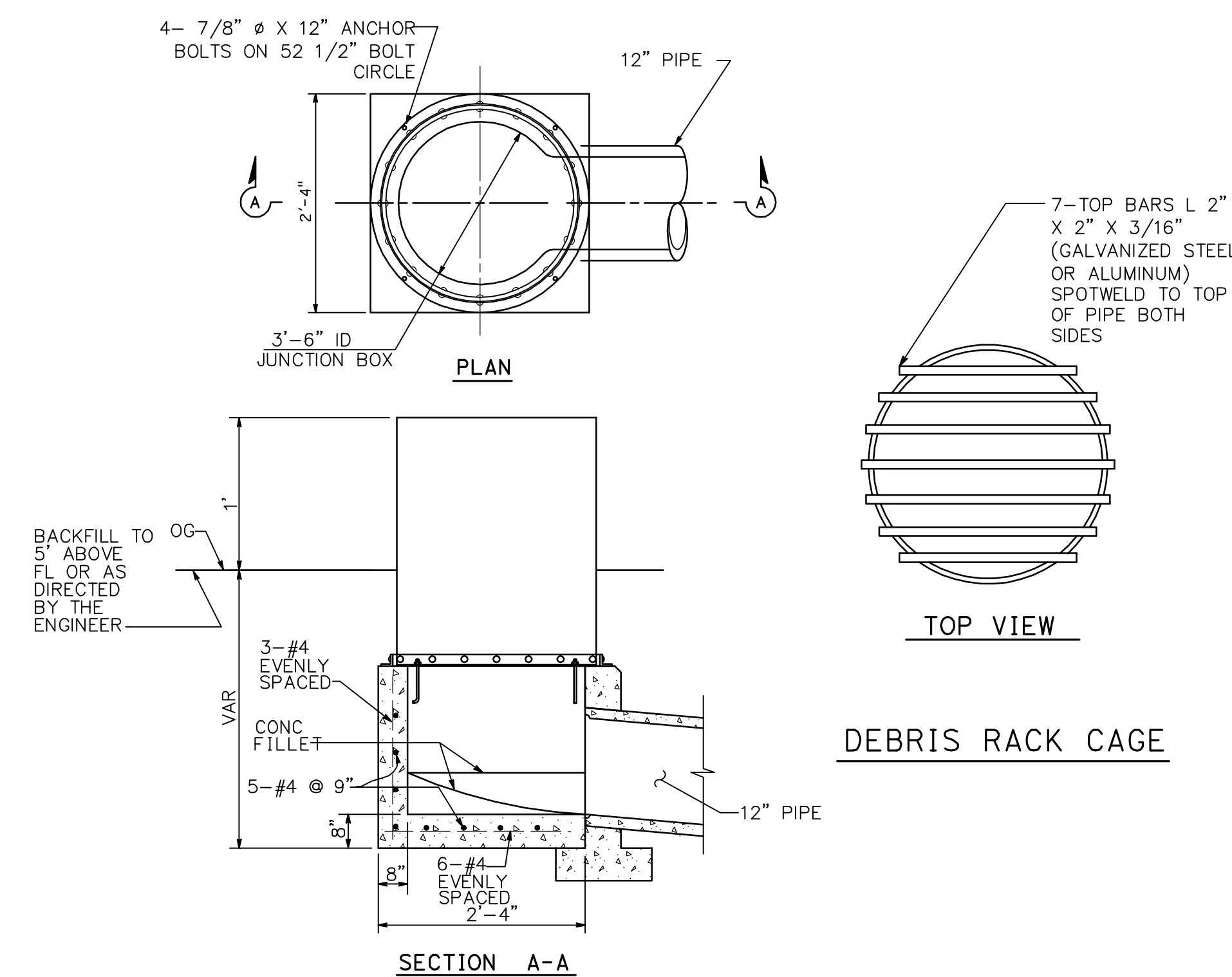
**R6 TRENCH BACKFILL (OUTSIDE PAVED AREAS)**



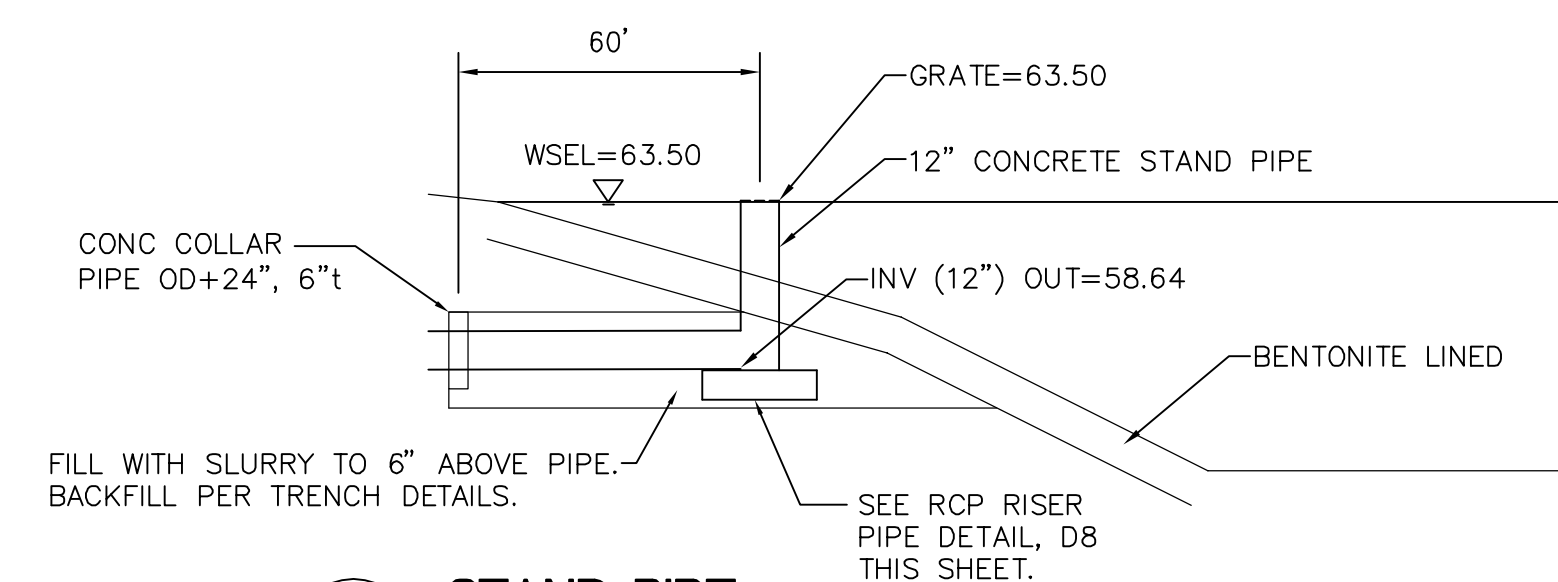
NOTES:

1. BEDDING ZONE SHALL CONSIST OF 3/4" OR 1/2" CRUSHED ROCK AS PER ASTM C-12. CRUSHED ROCK SHALL BE PLACED IN A MANNER SUCH AS SHOVEL-SLICING SPADE OR SHOVEL RODDING TO INSURE CONSOLIDATION OF HAUNCH ZONE.
2. INTERMEDIATE BACKFILL REQUIREMENTS SHALL BE AS SPECIFIED BY THE SOILS ENGINEER, OR THE DESIGN ENGINEER IN ACCORDANCE WITH THE SOIL REPORT.

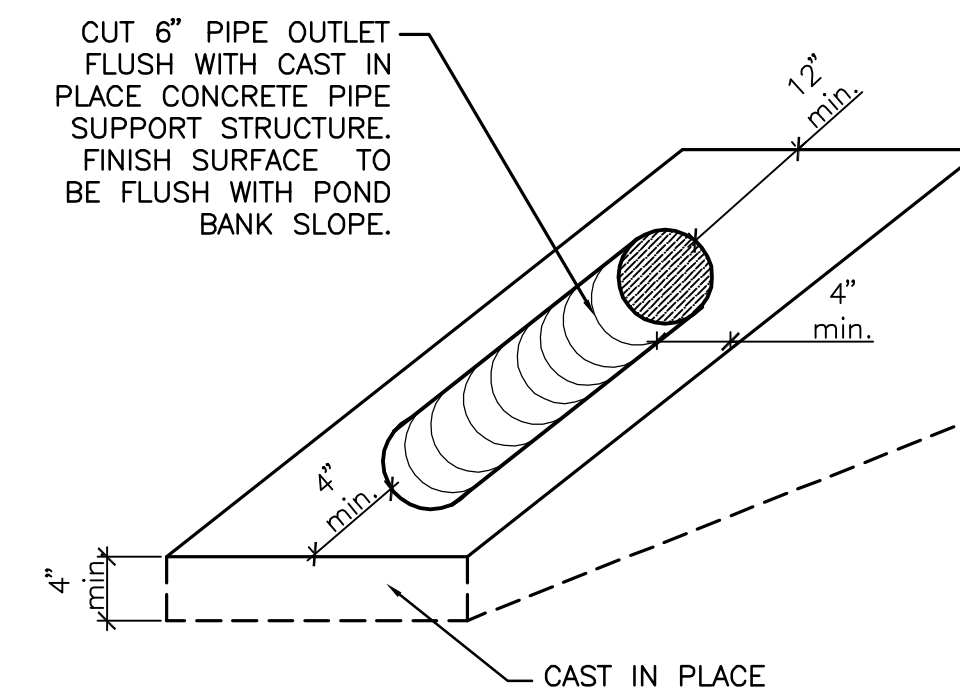
**P8 TRENCH BACKFILL (EXISTING AND NEW STREETS)**



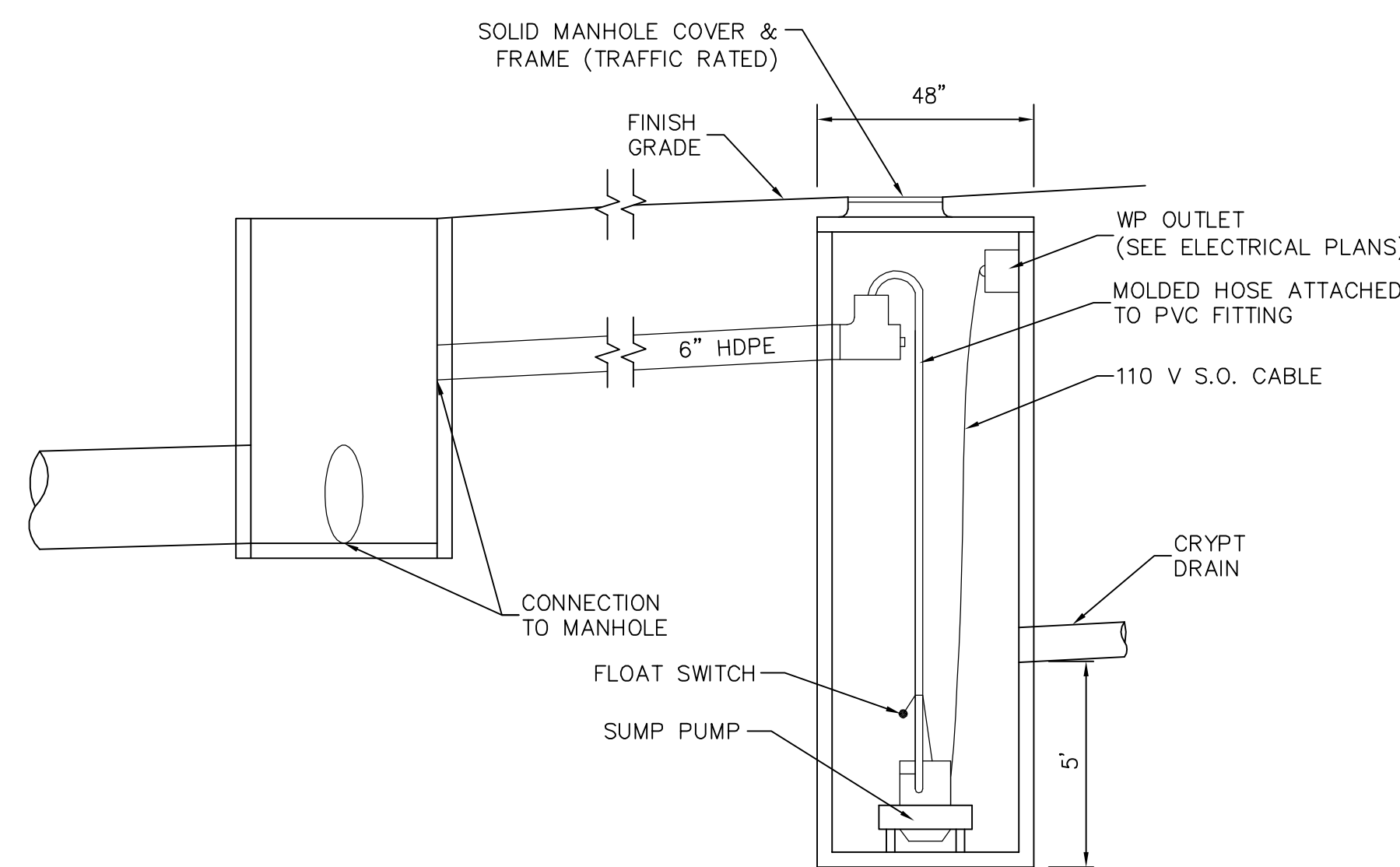
**D8 RCP RISER PIPE DETAIL**



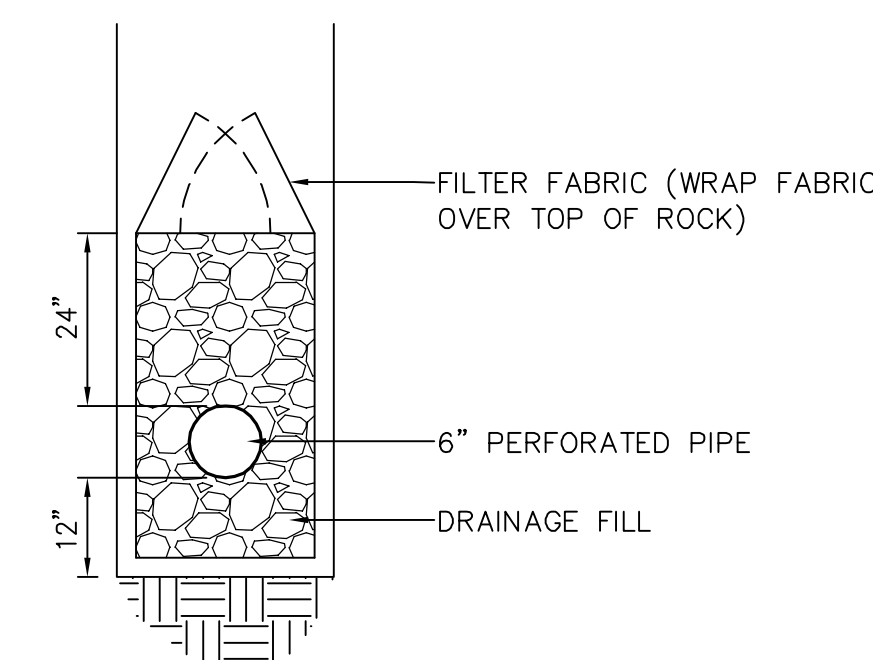
## E8 STAND PIPE



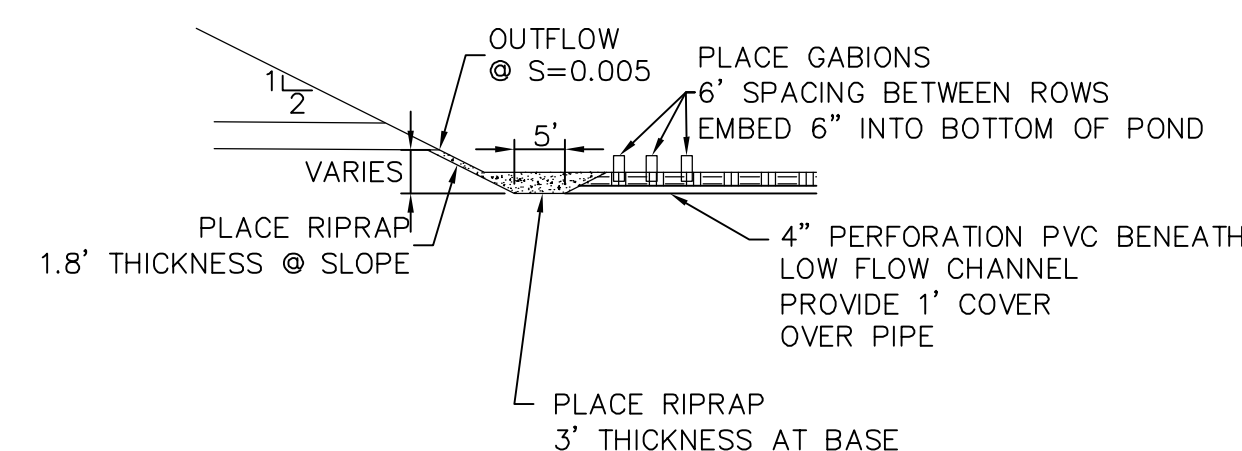
**E9** **OUTFALL TO POND**



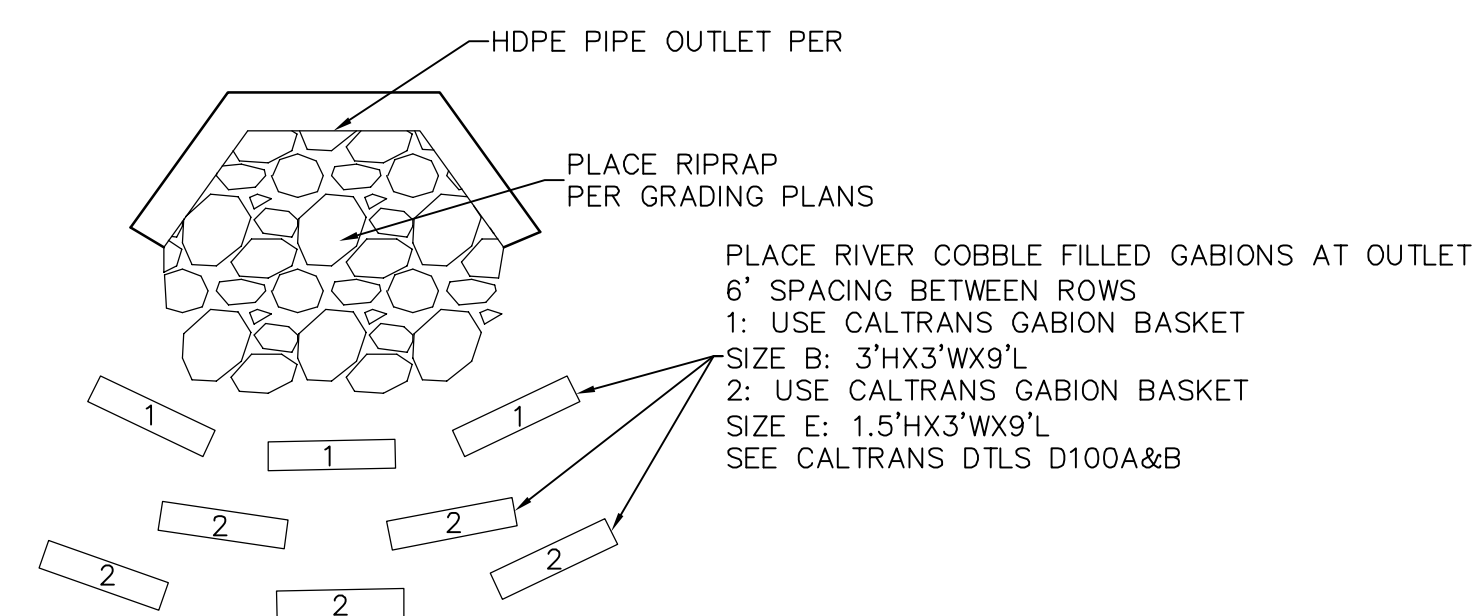
**D5 ALTERNATIVE LIFT PUMP (CRYPT UNDERDRAINS)**



**E5 SUBDRAIN**



**E5** HDPE PIPE OUTLET



AS - BUILT DRAWINGS

	MARCH 2010	AS-BUILT DRAWINGS	<div><div><div>Subconsultant List</div><div>DREYFUSS &amp; BLACKFORD 3540 FOLSOM BLVD., SACRAMENTO, CA. 95816 (916) 453-1234</div><div>CAPITAL ENGINEERING CONSULTANTS 11020 SUN CENTER DR., STE. 100 RANCHO CORDOVA, CA. 95670 (916) 851-3500</div><div>ECOM ENGINEERING CONSULTANTS 1796 TRIBUTE RD., SUITE 100, SACRAMENTO, CA 95815 (916) 641-5600</div><div>BUEHLER &amp; BUEHLER ASSOCIATES 600 Q STREET, STE. 200, SACRAMENTO, CA. 95814 (916) 443-0303</div><div>THE SIERRA WEST GROUP, LLC 2730 GATEWAY OAKS DRIVE, STE. 110 SACRAMENTO, CA. 95833 (916) 925-4000</div><div>MARCUS H. BOLE &amp; ASSOCIATES 104 BLOCK DR. WHEATLAND, CA. 95692 (530) 633-0117</div><div>PAR ENVIRONMENTAL 1906 21ST STREET, SACRAMENTO, CA. 95816 (916) 739-8356</div><div>ESPANA GEOTECH CONSULTING (FUGRO) 502 GIUSEPPE CT., ROSEVILLE, CA. 95678 (916) 773-2600</div><div>PERRY DESIGN 2091 HIDDEN GOLD TRAIL, COOL, CA 95614 (530) 823-2621</div></div></div>	<div><div><div><div><div><div></div><div>SEAL OF THE STATE OF CALIFORNIA</div><div>DEPARTMENT OF PUBLIC SAFETY</div></div><div><div></div><div>STATE OF CALIFORNIA</div><div>DEPARTMENT OF PUBLIC SAFETY</div></div></div><div><div></div><div>NEW NATIONAL CEMETERY</div><div>ADMINISTRATION</div></div></div></div></div>	<div><div><div>Drawing Title</div><div>DRAINAGE &amp; UTILITIES DETAILS</div></div><div><div><div>Approved: Director, Office of Construction Management</div><div>Approved: Director, Project Management Service</div></div><div><div>Project Title</div><div>NEW NATIONAL CEMETERY PHASE IB DEVELOPMENT</div></div><div><div><div>Building Number</div><div>Checked JAT</div><div>Drawn WMR</div></div><div><div>Location</div><div>SACRAMENTO VALLEY VA NATIONAL CEMETERY SOLANO COUNTY, CALIFORNIA</div></div></div><div><div>Date:</div><div>MARCH 2010</div></div><div><div>Project No.</div><div>921CM2001B</div></div><div><div>DRAWING NO.</div><div>L-609</div></div><div><div>Dwg.</div><div>87 Of 222</div></div></div></div>
		PREPARED FROM AS-BUILT DRAWINGS PROVIDED BY CLARK & SULLIVAN, FEBRUARY, 2010. INFORMATION HAS NOT BEEN FIELD VERIFIED BY A/E.			
		<div><div><div><div>CarterBurgess</div><div>A Wholly Owned Subsidiary of Jacobs Consultants in Architecture, Engineering, Planning, and the Environment</div><div>Sacramento Office 180 Promenade Circle, Suite 300 Sacramento, California 95834 (916) 929-3323 Fax (916) 929-1772</div></div></div></div>			
Revisions	Date				