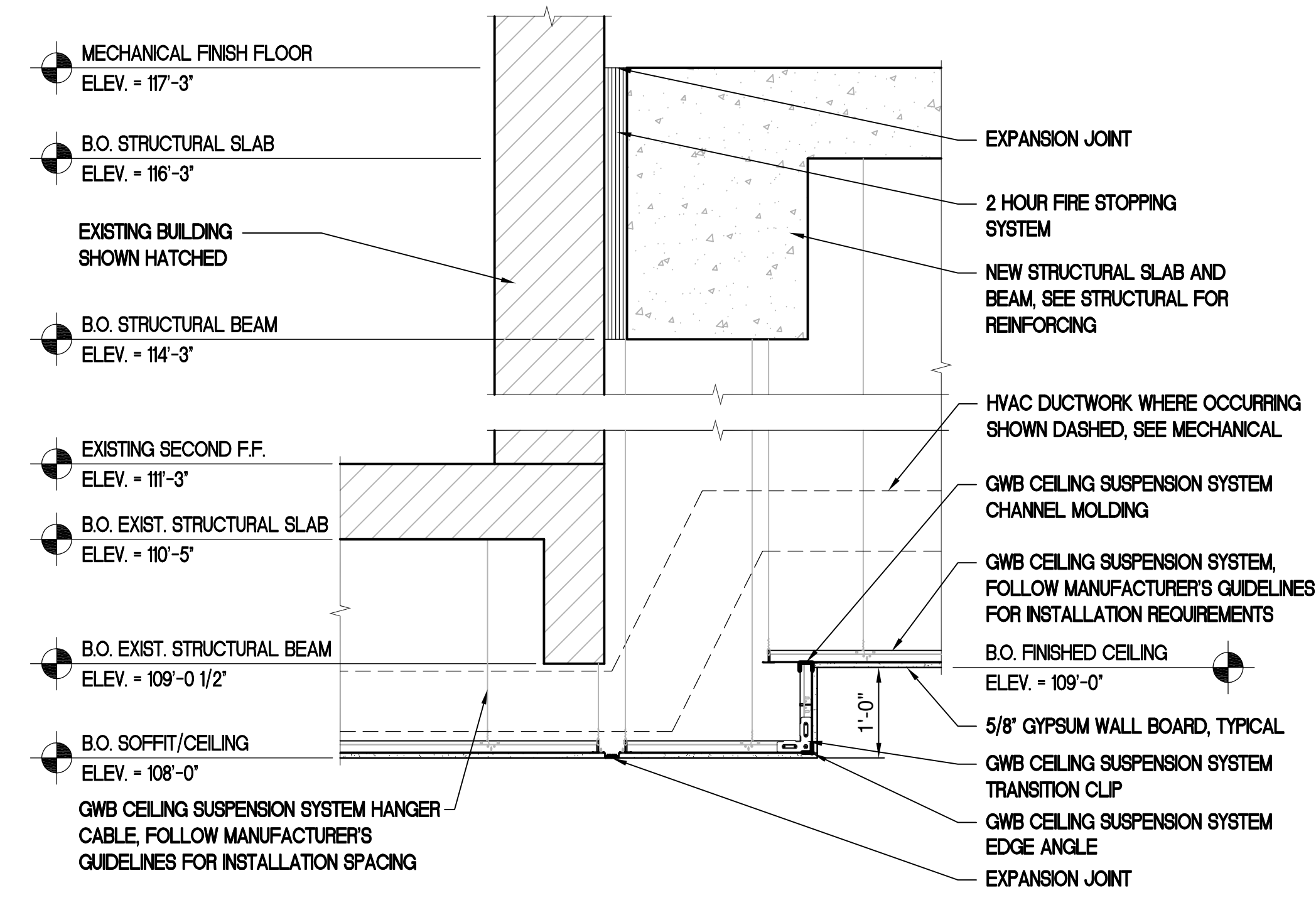
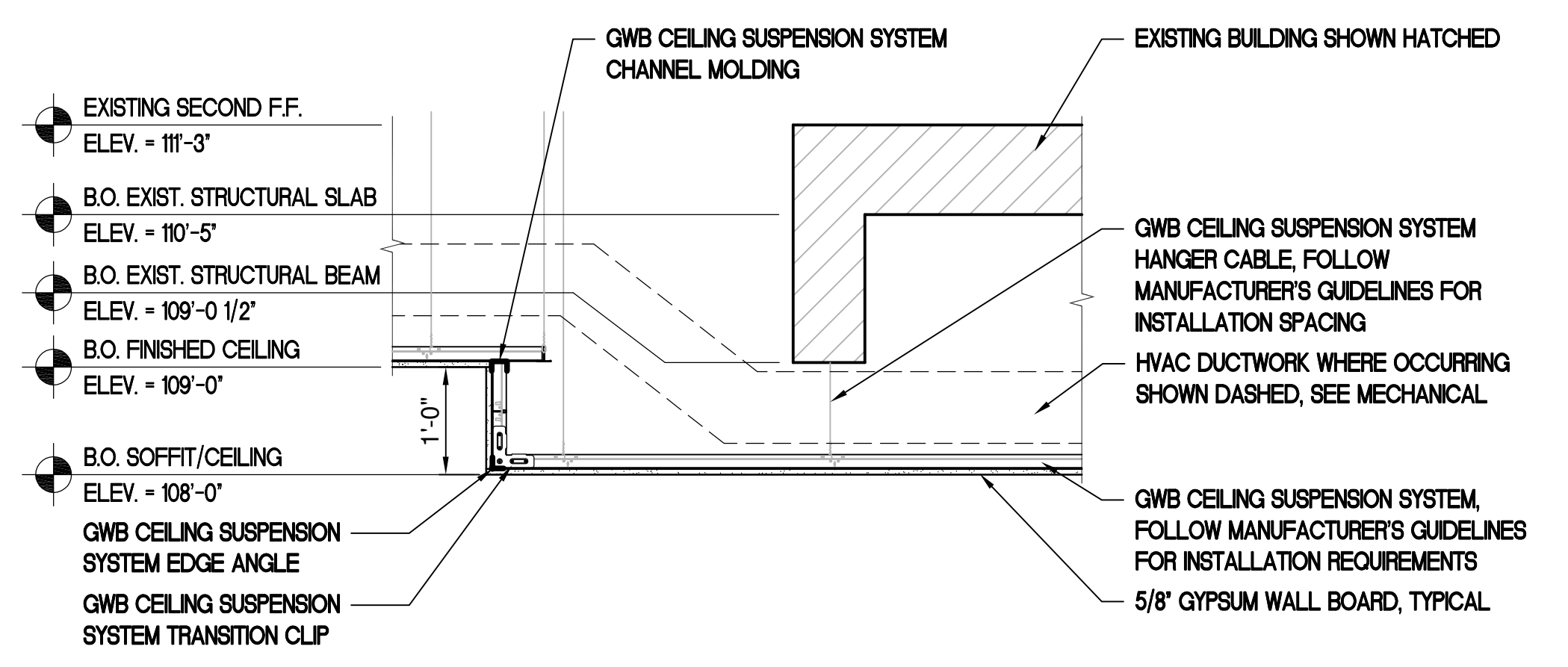


three inches = one foot  
one and one half inches = one foot  
one inch = one foot  
three quarters inch = one foot  
one half inch = one foot  
three eighths inch = one foot  
one quarter inch = one foot  
one eighth inch = one foot



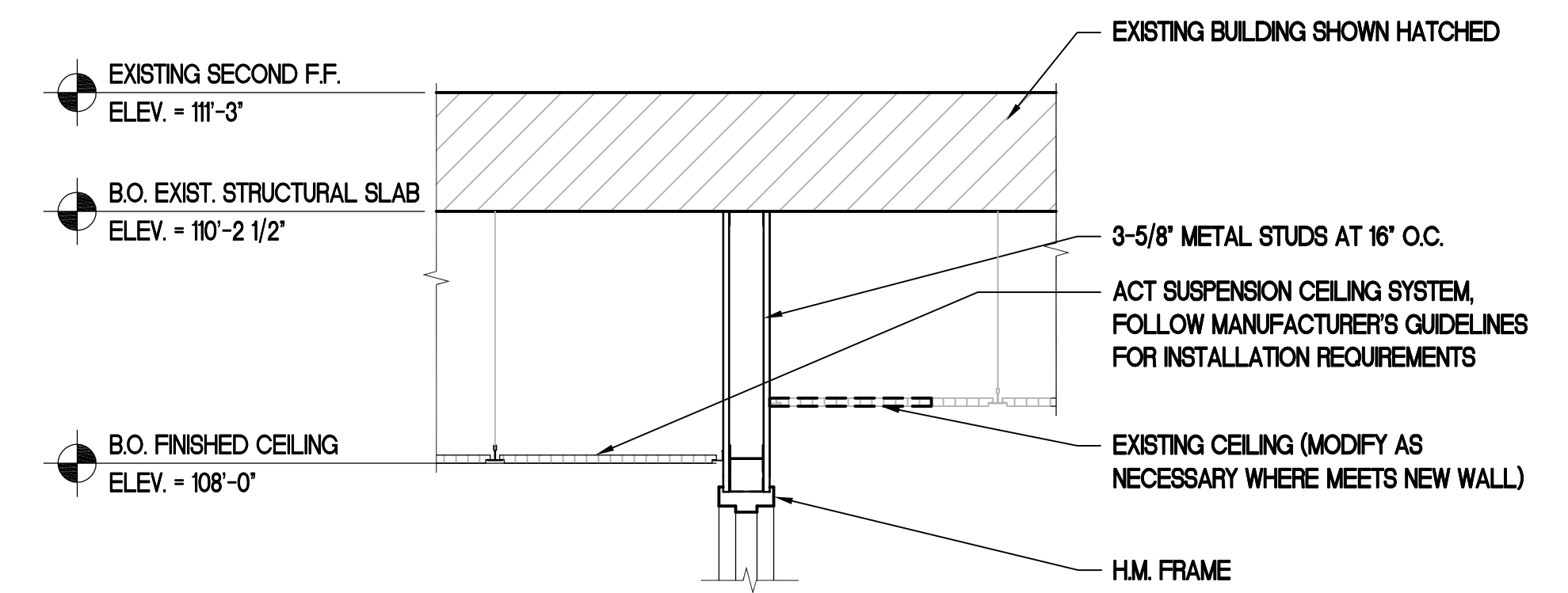
5 SOFFIT DETAIL

0 1 2 3 4 3/4'



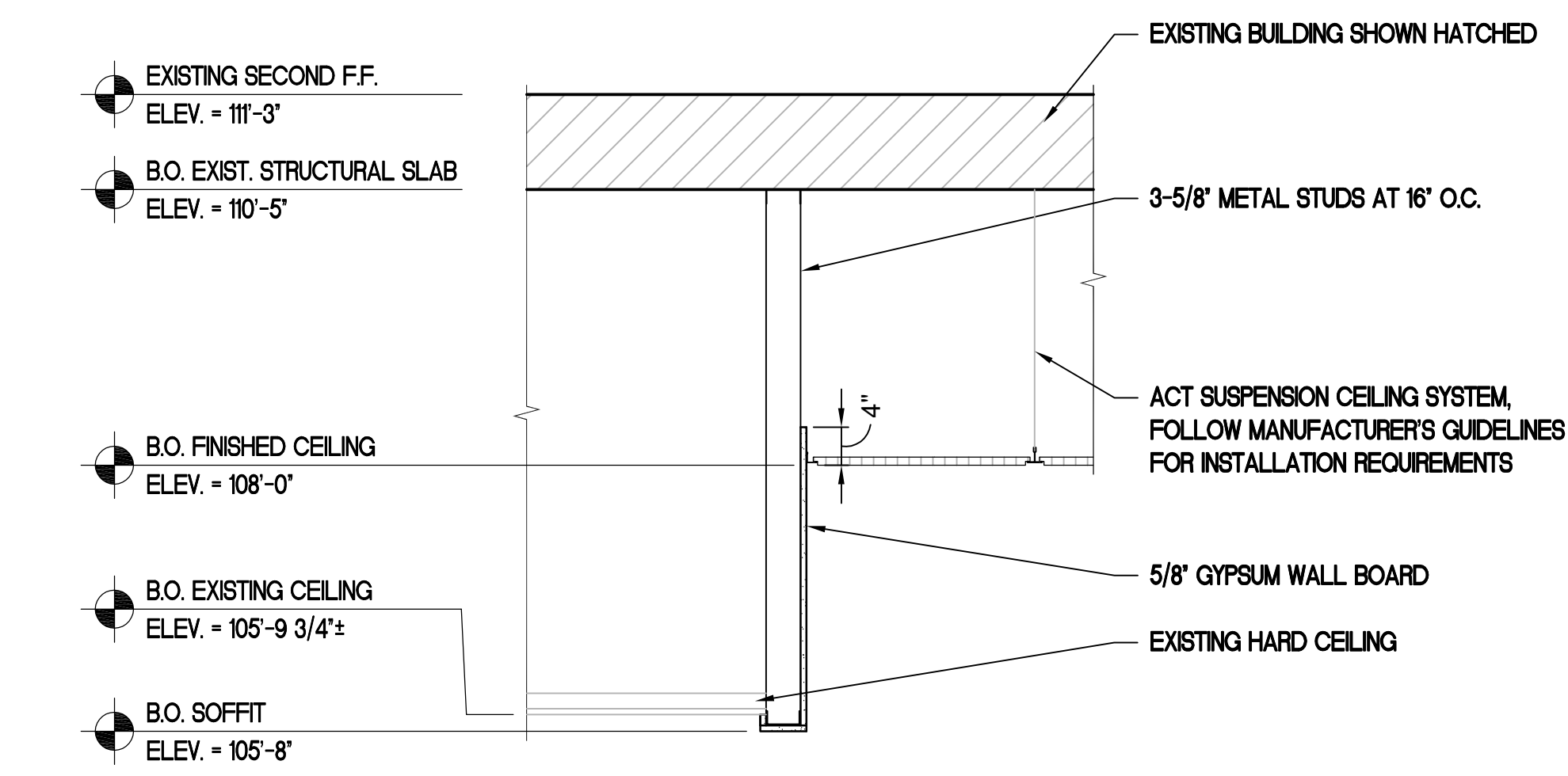
4 SOFFIT DETAIL

0 1 2 3 4 3/4'



6 SOFFIT DETAIL

0 1 2 3 4 3/4'



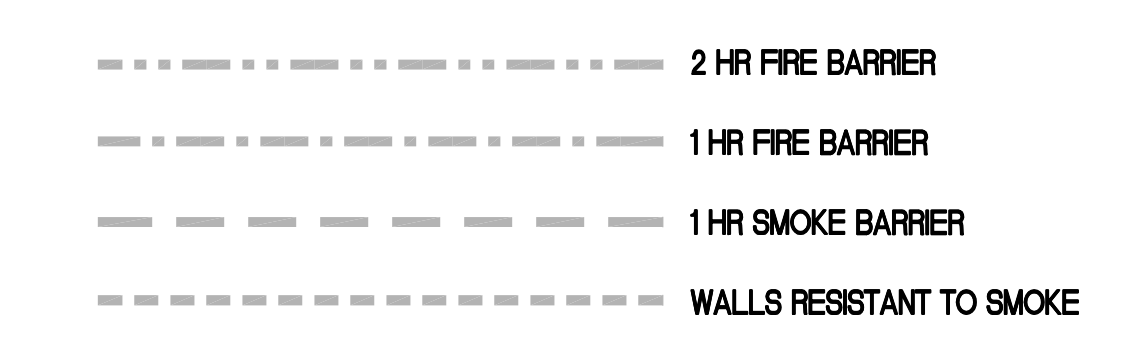
3 SOFFIT DETAIL

0 1 2 3 4 3/4'

REFLECTED CEILING PLAN KEYNOTES

- 1 OPEN TO STRUCTURE ABOVE
- 2 EXISTING CEILING TO REMAIN

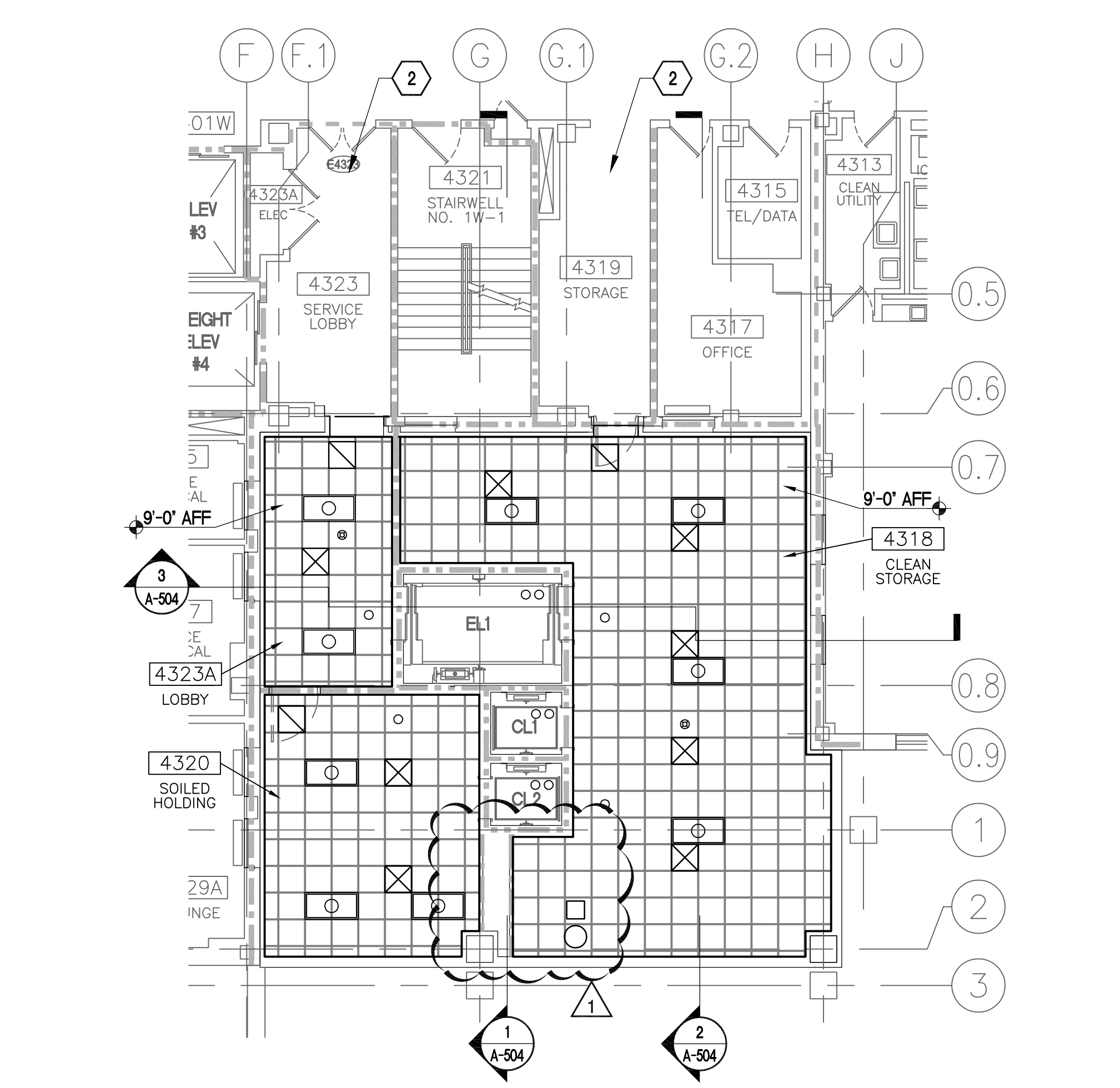
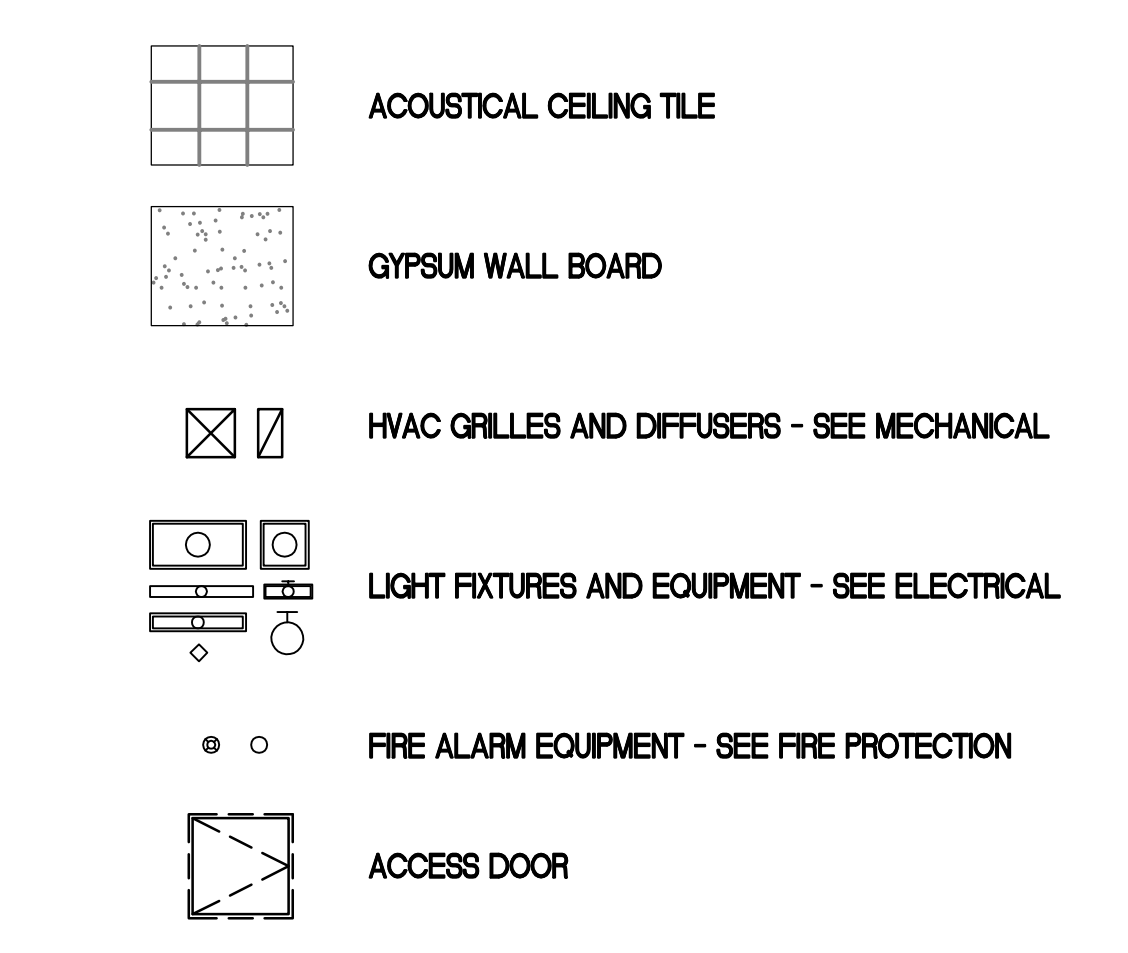
RATED WALL LEGEND



REFLECTED CEILING PLAN GENERAL NOTES

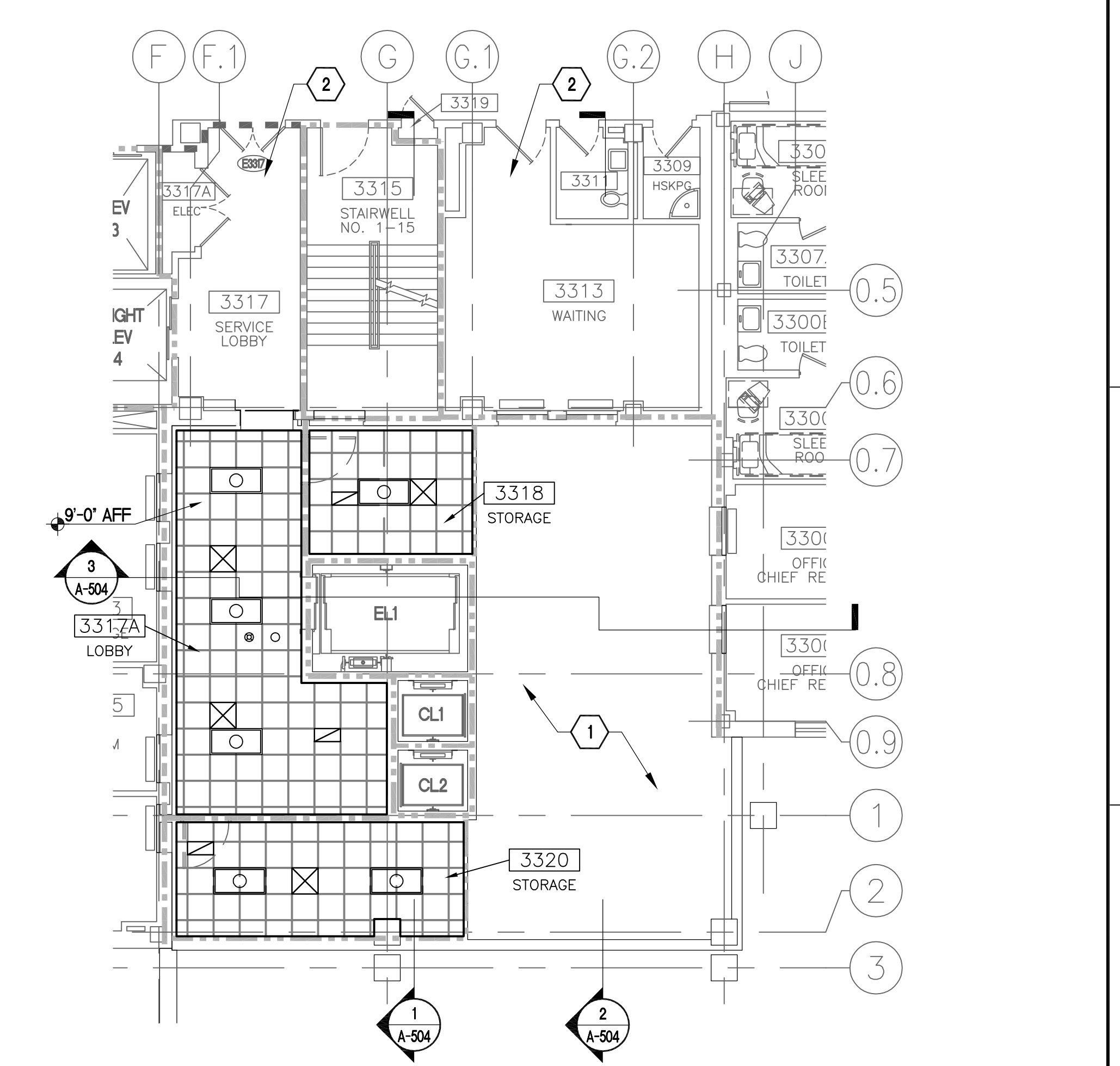
- 1 ALL CEILING GRID SHALL BE CENTERED IN THE ROOM OR CORRIDOR IN WHICH IT OCCURS, UNLESS SHOWN OTHERWISE.
- 2 ALL ACOUSTICAL TILE CEILING SHALL BE INSTALLED AT 8'-0" AFF, UNLESS NOTED OTHERWISE.
- 3 ALL GYPSUM WALL BOARD CEILING SHALL BE INSTALLED AT 9'-0" AFF, UNLESS NOTED OTHERWISE.
- 4 OMIT THE REQUIREMENT FOR PHASING UNDER ALTERNATE DEDUCT #1

REFLECTED CEILING PLAN LEGEND



2 FOURTH FLOOR REFLECTED CEILING PLAN (PHASE TWO)

0 8 16 24 1/8'



1 THIRD FLOOR REFLECTED CEILING PLAN (PHASE TWO)

0 8 16 24 1/8'

<b>CONSULTANTS:</b>		<b>ARCHITECT/ENGINEERS:</b>		<b>Drawing Title</b>		<b>Project Title</b>		<b>Project Number</b>		<b>Office of Construction and Facilities Management</b> Department of Veterans Affairs	
		<b>KHA</b> Kenneth Hahn Architects 1343 South 75th Street   Omaha, NE 68124-1610   402.391.2111   www.kharch.com AE Project # 171-001		THIRD AND FOURTH FLOOR REFLECTED CEILING PLANS AND CEILING DETAILS		BUILD SUPPLY, PROCESSING AND DISTRIBUTION		636-121			
				Approved Project Director		Location VAMC DES MONES IOWA		Building Number BUILDING 1W			
						Date 13 FEBRUARY 2014		Checked NAS			
#1 AMENDMENT 002 Revisions		08-07-14 Date						Drawing Number A-331		Dwg. 42 of 235	