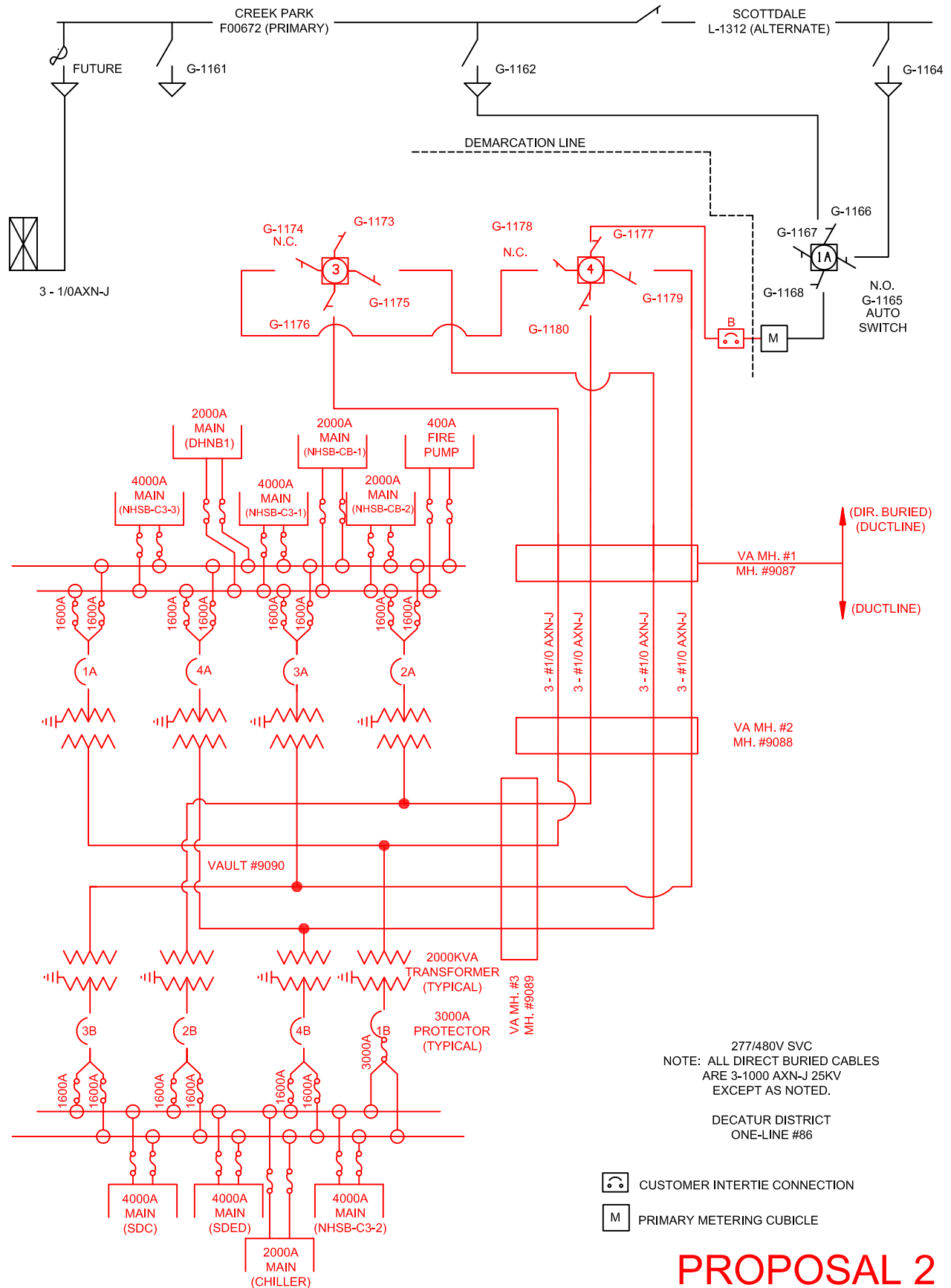


GEORGIA POWER COMPANY - ATLANTA, GEORGIA

1678 CLAIRMONT RD.



277/480V SVC
NOTE: ALL DIRECT BURIED CABLES
ARE 3-1000 AXN-J 25KV
EXCEPT AS NOTED.

DECATUR DISTRICT
ONE-LINE #86

 CUSTOMER INTERTIE CONNECTION

M PRIMARY METERING CUBICLE

PROPOSAL 2

VETERANS HOSPITAL

DRAWN BY: JAG

APPROVED: JAG

DATE: 4/1/09

SCALE: NTS

REVISIONS:

#1 PLT 10-13-94 GENERAL
#2 WEST 5 - 2 - 01 ADD TRANS, 2B & 4B
#3 Added #1B and #3A, Split Bus

19-9090-A-1