

REQUEST FOR INFORMATION (RFI)

VA-251-14-B-0054

PROJECT NUMBER:	553-303a	Please ensure that before submitting questions or requests for clarification that you thoroughly read the solicitation, specifications, drawings and other pertinent documents. When submitting questions on this project the Government requires contractors to specifically identify the specification and/or solicitation section(s) or drawing number(s) in reference to the question or request for clarification submitted. No question or request for clarification will be answered by the Government unless the above requirements are met. Failure to comply may prevent the Government from responding in a timely manner.	
PROJECT TITLE:	Expand Emergency Center		
PROJECT LOCATION:	Department of Veterans Affairs VA Medical Center 4646 John R. Street Detroit, MI 48201		
SUBMITTED BY:	DBC	City/State:	
PHONE NO.:			

TO:

Aleda E. Lutz VAMC
Department of Veterans Affairs
Attn: Contracting Office, 90CSC
1500 Weiss Street
Saginaw, MI 48602

RFI NO.:	DATE: 8/8/14	SPEC/DWG. REFERENCE:
REPLY NEEDED BY:		

INFORMATION NEEDED:

PLEASE ANSWER ATTACHED QUESTIONS.

REPLY:

Refer to pages 4 and 5 for full responses.

REPLY FROM:	Scott Floyd, PE, C2AE	DATE:	August 13, 2014
ATTACHMENTS:		COPY TO:	

VA ER Expansion Project# 11-0049 RFI

General Questions:

- ~~1- Page 27-31-31 18 Are we providing any quotes for Data, Voice and TV Equipment?~~
- 2- Page 27-11-00 28 Item E. 1. ; not clear what do they mean with the Connectors Panel.
- 3- Page 27-11-00 29 Item b. 1) are they requesting a Patch Panel with pass thru for all their cabling with regular Module Jack to be terminated on the cable?
- 4- Page 27-15-00 20 Item c. 1). They are requesting a 400 Pair STP from Telephone service room to MDF, can you emphasis on that and locations, what will be terminated on?
- 5- Page 27-15-00 22 Fiber Optics, what is the scope of the Fiber Optics Termination, location, and where from and to?

Sheet E-502 – Note 1,2,3

- 1- Are we tying in to the Duress System
- 2- Where is the Communication room location for Zone 5 and 7?

Sheet E-502 – Note# 6

- 1- Line item 1, specs and type of audio Cables (RCA or Just Coaxial)
- 2- Line item 6, what is the current TV System that all TVs need to be integrated with, and is it part of the cope you are looking from us to perform

Sheet E-502 – Note# 7 TYPE 5:






- 1- Upper Faceplate Parts Calls for dual Faceplate Part IMF2W. However, the diagram shows 2 Single Gang Faceplate.
- 2- Upper Faceplate Parts Calls for a Blank Unit Part IMB1W. However, the diagram shows no Blank Units needed
- 3- Upper Faceplate Parts doesn't include any VGA and HDMI. However, the diagram shows both. If required what are the specs.
- 4- What is the approximate location between upper and lower faceplate of the AV System
- 5- Item line 10, requiring an Engraved Lamacoid engraved labels and laser printed labels. Which one is true?

Sheet E-500 – Note 10

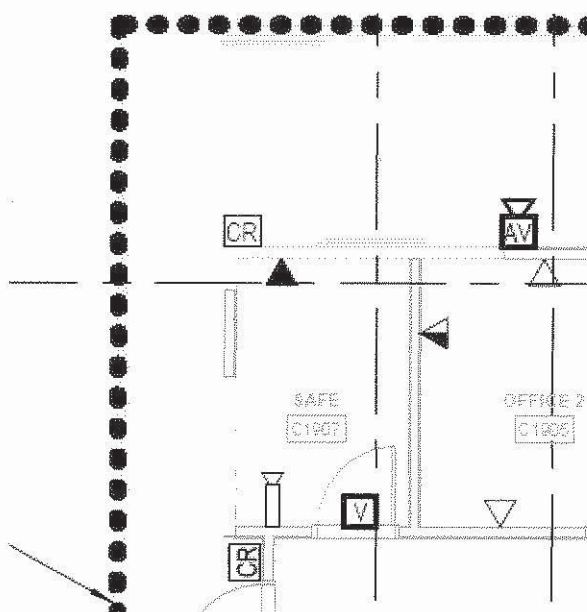
- 1- What is the scope of the Fiber Optics Work that needs to be performed
- 2- Location from and to
- 3- On sheet E-501 it is asking for rerouting and re-cabling of data cable in manhole after demolition. Is the scope of work required form us to perform that too?

Sheet E-600

- 1- Symbol Legend of Communication System does not coincide with Sheet E-502 Notes 1,2 and 3. The Triangle Symbols do not match and especially the Solid Triangle signal see Pic:

	CABLE TV CONNECTION: 96" COAX CONNECTION. UON. SEE DETAILS
	PUBLIC TELEPHONE: TYPE 1 FACEPLATE. UON. SEE DETAILS.
	VOICE/ DATA OUTLET: TYPE 2 FACEPLATE. UON. SEE DETAILS.
	VOICE/ DATA OUTLET: TYPE 3 FACEPLATE. UON. SEE DETAILS.
	VOICE/ DATA OUTLET: TYPE 4 FACEPLATE. UON. SEE DETAILS.

- 2- If it is a Typo, does the Solid Triangle mean anything in specific especially that there is one location on Sheet ES-131.7 Safe Room C1907 see pic



Sheet ES-131.7

- 1- Where is the Data Room
- 2- Keynotes 2,3,4 require extra cable to be ran for furniture. Is there any specs on termination type for faceplates or surface mount boxes?
- 3- TV Termination location?
- 4- TV Interconnection system, is it within our Scope of work? If so where does it terminate at and what is the System Specs
- 5- Are there any Wireless AP's

Sheet ES-131.11

- 1- Are there any layout of the Data Room layout; ladder racking, network post, network cabinets...
- 2- TV Question, Same questions as Sheet ES-131.7
- 3- Wireless AP's

General Responses

2. Specification section 271100,2.2E(1) Refers to equipment requirements, cross connection system.
3. Review all of specification 271100 for clarity and requirements.
4. See E-502 for network riser information.
5. See E-502 for network riser information regarding fiber requirements.

E-502 Note 1, 2, 3

1. Yes.
2. See A-131.11 for room names for expansion. Existing IT room is located in zone 9 and serves zone 5 and 7. Coordinate with COR for visit to site.

E-502 Note #6

1. See 7/E-502 for additional connectivity requirements of 6/E-502.
2. TV's to be integrated with current TV system. See 5/E502 for typical riser.

E-502 Note 7 Type 5

1. Provide (2) single gang faceplates.
2. Blank not required for top plate, only for bottom plate.
3. VGA and HDMI based on Hubbell iStation IM15315, and HDMI feed through compatible with plate for both upper and lower plates including Hubbell netselect FPTV cover per television mounting detail 6/E-502.
4. See ES drawings for actual description on locations of upper/ lower faceplates. Typical location of lower plate is below TV at 18", see architectural plans for elevation of TV locations.
5. Provide label strip as noted. Engraved lamacoid labels are not required for coverplate designations. See specifications for additional naming and labeling requirements.

E-500 Note 10

1. See 10/E-502 for requirements of fiber.
2. See 10/E-502 for requirements of fiber.
3. Yes. See other RFI's for clarification of data cable.

E-600

1. Revise symbol legend for solid triangle to designate Type 1 faceplate and add solid triangle to part description on 1/E-502. TV connection in legend to reference 6/E-502 and 7/E-502.
2. See clarification above. Safe location to receive single data location for integration of safe with IT system for monitoring.

ES-131.7

1. See response above and see A-131.11 for room names for expansion. Existing IT room is located in zone 9 and serves zone 5 and 7. Coordinate with COR for visit to site.
2. Contractor shall provide type 3 coverplates completely recessed in owner provided furniture. Surface mounting is not acceptable.
3. See 5/E502 and previous responses from same contractor.
4. Yes. Interconnection to existing TV system is part of this contract. See prior responses from this RFI and 5/E502.
5. Wireless access points are not currently part of this contract.

ES-131.11

1. Contractor required to provide layout to be approved as part of the shop drawing submittal process.
2. See responses above regarding integration of TV systems.
3. See response above regarding wireless access points.

Scott Floyd, PE, C2AE
August 13, 2014



Digitally signed by Warren J. Brown
DN: c=US, cn=Warren J. Brown,
o=VAMC Detroit, ou=Facility
Engineering
Date: 2014.08.13 15:11:28 -04'00'