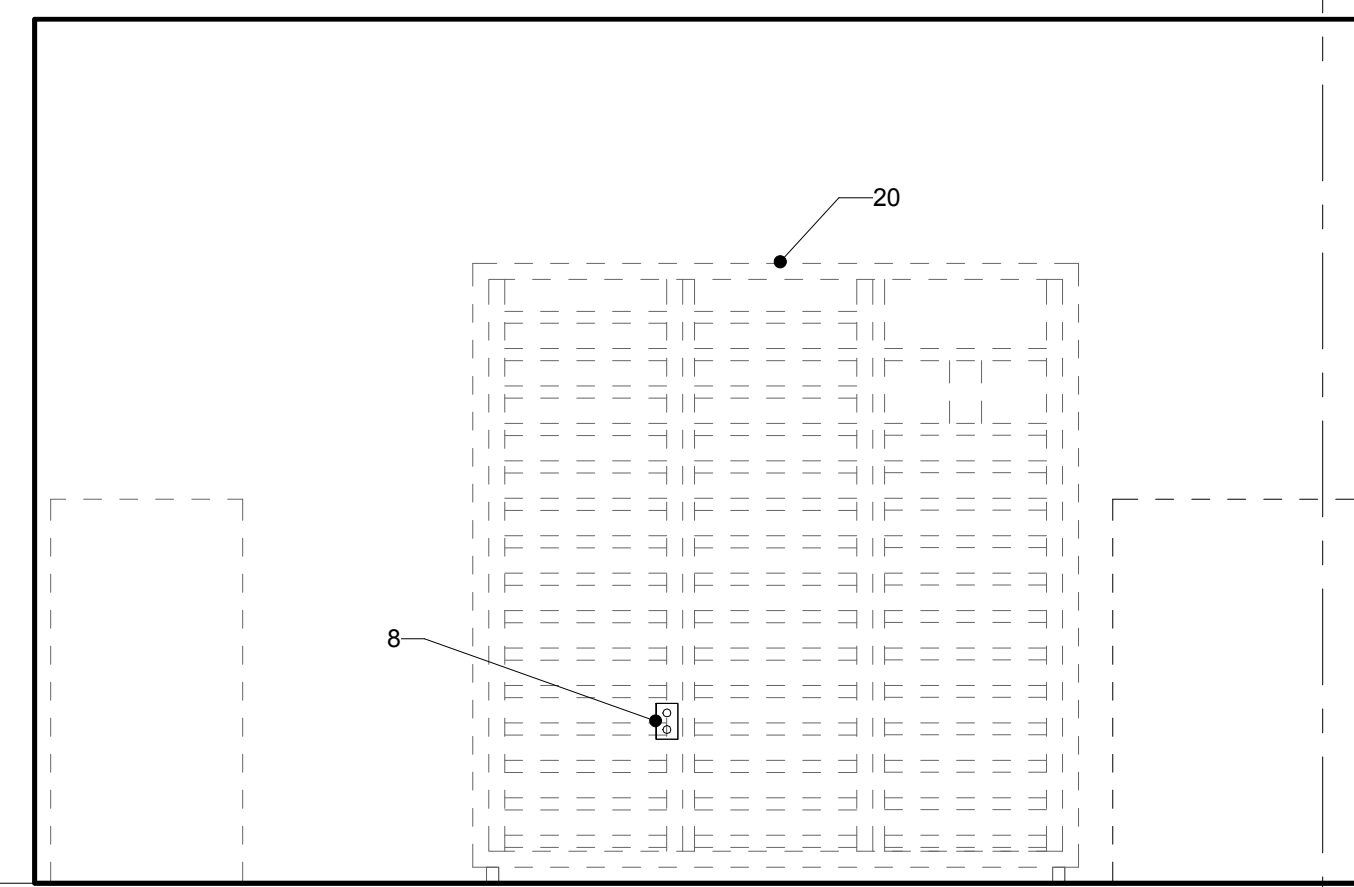
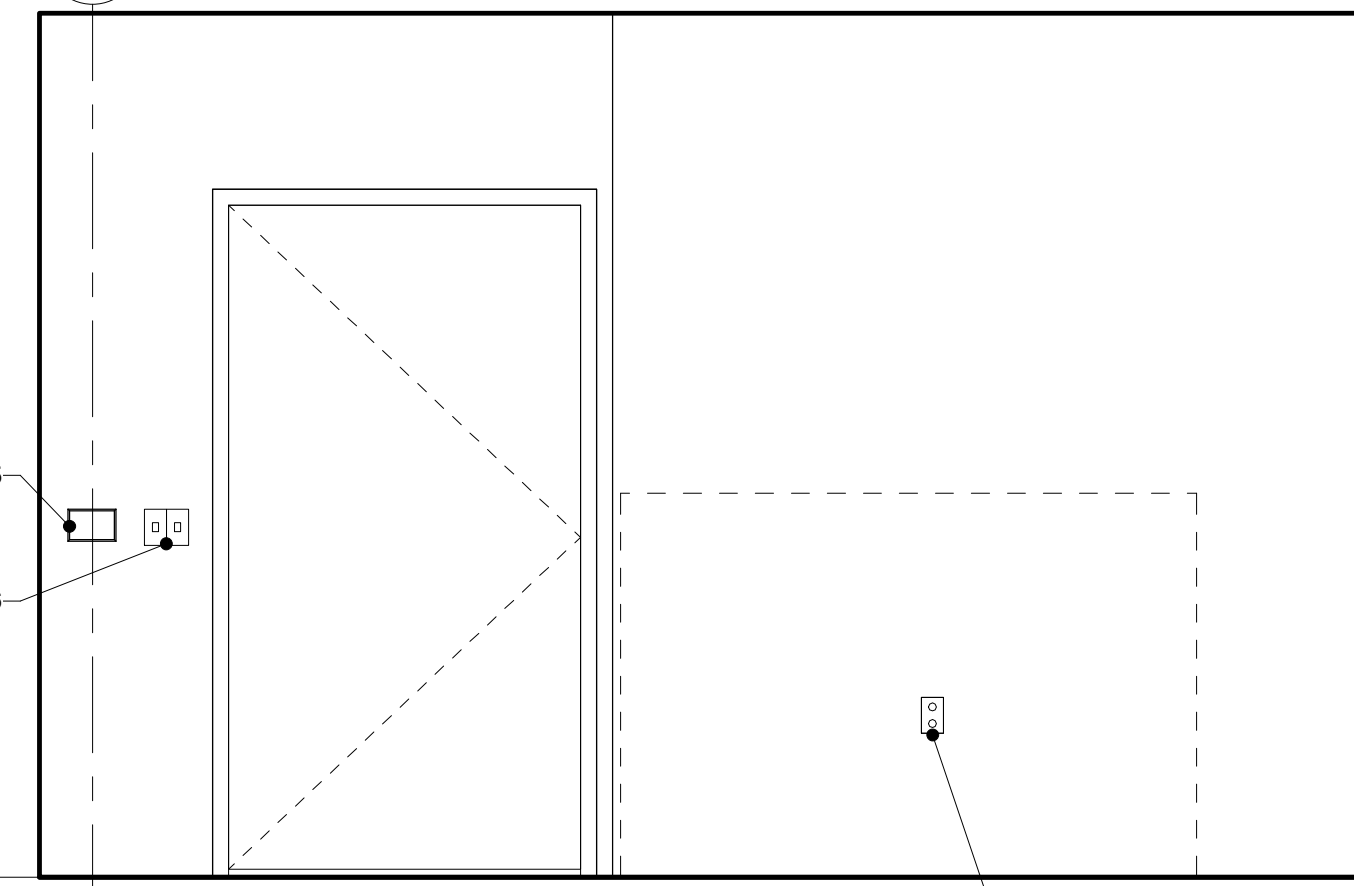


KEYNOTES

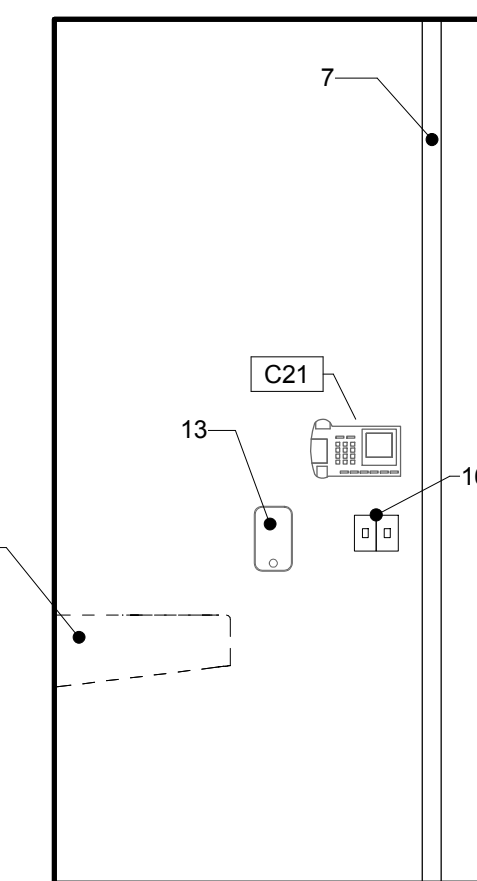
1	BED LIGHT
2	HAND TOWEL DISPENSER
3	BUMPER GUARD
4	NURSE CALL SYSTEM DEVICE
5	WALL HUNG SINK
6	FLUSH MOUNT CORNER GUARD
7	2 HOUR FR CORNER GUARD - SEE SHEET AS7-22
8	EMERGENCY POWER OUTLETS - TYP MOUNTING U.O.N.
9	VOICE/DATA DEVICE
10	CARD READER
11	DOOR SWITCH
12	NURSE CALL LIGHT
13	SOAP DISPENSER
14	PRE-WIRED HEADWALL UNIT
15	THERMOSTAT
16	(E) WALL MOUNTED TELEPHONE
17	POWER OUTLETS - TYP MOUNTING U.O.N.
18	COAT HOOK
19	WASTEBASKET
20	OMNI-CELL UNITS



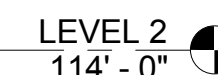
15 CLEAN SUPPLY - EAST



25 CLEAN SUPPLY - WEST



36 HOLD MONITOR - SOUTH



50

VA FORM 08-6231

Date _____



Hilliard
ARCHITECTS

www.HilliardArchitects.com



Approved: Project Director

Drawn

Dwg. of

Department of
Veterans Affairs

100% CONSTRUCTION DOCUMENTS

A

B

C

D

E

F

A

B

C

D

E

F

ELEVATION NOTES

KEYNOTES	
1	FIELD-INSTALL GROMMET(S) ON MILLWORK FOR POWER AND DATA ACCESS, TYP.
2	STEEL FRAMED, SPECIALTY GLAZED WINDOW - SEE SPECIFICATIONS
3	NURSE CALL SYSTEM DEVICE
4	DISCOVERY MAIN DISCONNECT
5	BUMPER GUARD
6	FLUSH MOUNT CORNER GUARD
7	SOAP DISPENSER
8	LOCKABLE CABINETS WITH MOVEABLE SHELVES, WINDOWS, AND FINISH TO MATCH EXISTING
9	150 AMP LOCAL SERVICE DISCONNECT FOR LOCK-OUT/TAG-OUT CAPABILITY (MAY BE FUSED DISCONNECT, CIRCUIT BREAKER OR SAFETY SWITCH)
10	EMERGENCY POWER OUTLETS - TYP MOUNTING U.O.N.
11	POWER OUTLETS - TYP MOUNTING U.O.N.
12	VOICE/DATA DEVICE
13	(E) WALL MOUNTED TELEPHONE
14	THERMOSTAT
15	WALL MOUNTED EQUIPMENT BY OPERATOR - N.I.C.

100% CONSTRUCTION DOCUMENTS



7/11/2014 1:31:21 PM
HILLIARD ARCHITECTS INC. COPYRIGHT

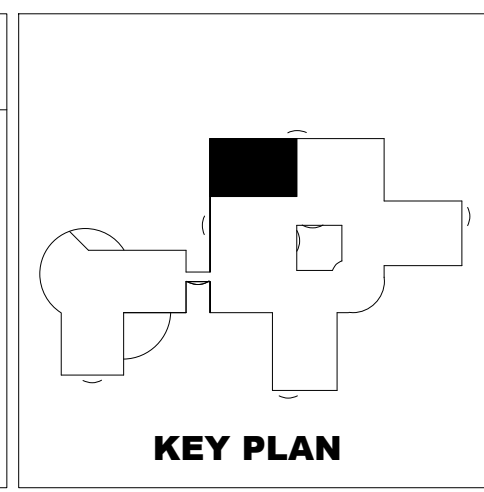
Revisions:	Date

CONSULTANTS:	

ARCHITECT/ENGINEERS:



251 Post Street, Suite 620
San Francisco, CA 94108
Tel 415 989 6400
www.HilliardArchitects.com



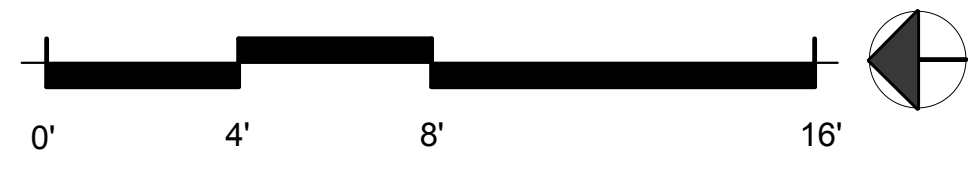
Drawing Title
PHASE 2 - HYBRID CONTROL, GEN, SCRUB ELEV
Approved: Project Director

Project Title		Project Number
VA PALO ALTO B-100 CATH LAB RENOVATION & HYBRID OR		640-13-134
Location		Building Number
VAPAHCS - PALO ALTO CAMPUS 3801 MIRANDA AVE, PALO ALTO, CA 94304		100
Date	Checked	Drawing Number
07.09.2014		AS4-28
	Drawn	Dwg. of

Office of Construction and Facilities Management



Department of Veterans Affairs



CONSTRUCTION NOTES

KEYNOTES

PLUMBING FIXTURE SCHEDULE - PHASE 3

Type Mark	Type Comments	Description
-----------	---------------	-------------

100% CONSTRUCTION DOCUMENTS

		CONSULTANTS:		ARCHITECT/ENGINEERS:		<div><div></div><div>251 Post Street, Suite 620 San Francisco, CA 94108 Tel 415 989 6400 www.HilliardArchitects.com</div></div>		<div><p>KEY PLAN</p></div>		<div>Drawing Title PHASE 3 - CATH LAB ENLARGED PLAN</div> <div>Approved: Project Director</div>		<div><div>Drawing Title VA PALO ALTO B-100 CATH LAB RENOVATION & HYBRID OR</div><div>Location VAPAHCS - PALO ALTO CAMPUS 3801 MIRANDA AVE, PALO ALTO, CA 94304</div><div><div>Date 07.09.2014</div><div>Checked</div><div>Drawn</div></div></div>		<div><div>Project Number 640-13-134</div><div>Building Number 100</div><div>Drawing Number AS4-31</div><div>Dwg. of</div></div>		<div>Office of Construction and Facilities Management</div> <div> Department of Veterans Affairs</div>	
Revisions:		Date															



1 LEVEL 2 - CATH LAB FINISH PLAN

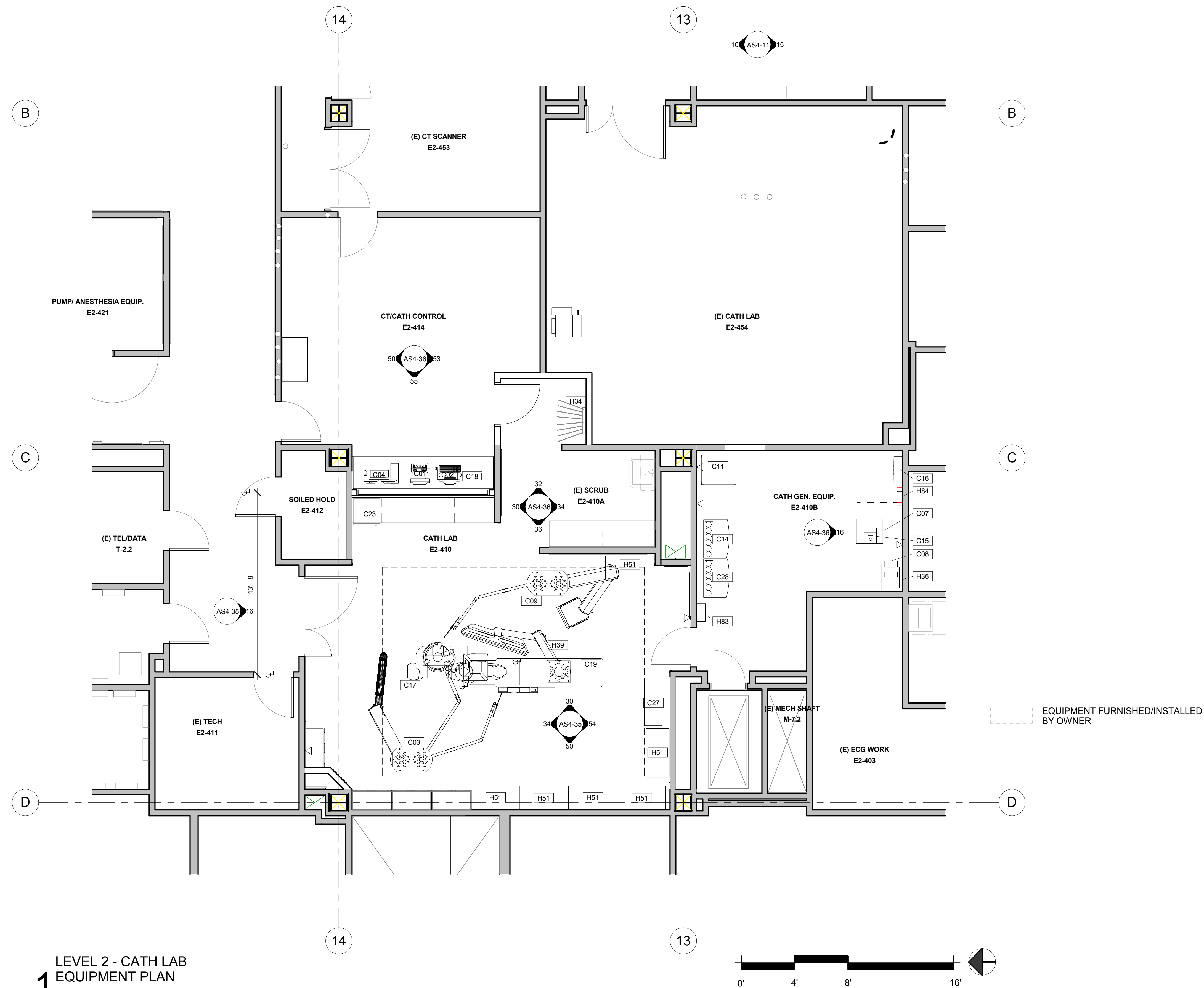
FINISH LEGEND					
TYPE	MARK	FINISH ITEM	MANUFACTURER	COLOR	NOTES
FLOORS	MP-1	MONOPUR RESIN FLOOR	RPM/BELGIUM N.V.		COVERED BASE
	PT-1	PORCELAIN TILE (2x2, COVED BASE)	DATILE	KEYSTONE - DESERT GRAY D014	PER VA; OPTION FOR TOILET ROOMS
	PT-2	PORCELAIN TILE (2x2, COVED BASE)	DATILE	KEYSTONE - URBAN PUTTY D161	PER VA; OPTION FOR TOILET ROOMS
	RB-1	6" RESILIENT BASE	JONSONITE (OR APPROVED EQUAL)	[SELECT 1: SILVER GREY OR ZEPHYR]	PER VA
	RSF-1	RESILIENT SHEET FLOORING (3mm)	NORA (OR APPROVED EQUAL)	2944 LOTUS FLOWER & BASE	PER VA; WELDED; SEE PLANS FOR FLOOR PATTERN IN OR & CORRIDORS
	RSF-2	RESILIENT SHEET FLOORING (3mm)	NORA (OR APPROVED EQUAL)	2938 BELLFLOWER	PER VA; WELDED; SEE PLANS FOR FLOOR PATTERN IN OR
	RSF-3	RESILIENT SHEET FLOORING (3mm)	NORA (OR APPROVED EQUAL)	2959 YARROW	PER VA; WELDED; SEE PLANS FOR FLOOR PATTERN IN OR
	RSF-4	RESILIENT SHEET FLOORING (3mm)	NORA (OR APPROVED EQUAL)	2936 FLAX	PER VA; WELDED; SEE PLANS FOR FLOOR PATTERN IN CORRIDORS
	RT-1	RECYCLED TILE (4x4, 4x8, COVED BASE)	DATILE	ENDURANCE PROFESSIONAL - SILVER EN02	PER VA; OPTION FOR TOILET ROOMS
	RT-2	RECYCLED TILE (4x4, 4x8, COVED BASE)	DATILE	ENDURANCE PROFESSIONAL - BARIUM EN08	PER VA; OPTION FOR TOILET ROOMS
WALLS	VCT-1	RESILIENT TILE FLOORING			PER VA
	WSF-1	WELDED SEAM SHEET FLOORING (HEAT WELDED WITH ROD)			
	CG-1	CORNER GUARD (FULL-HEIGHT)	ACROVYN (OR APPROVED EQUAL)	949 WHITE OR MATCH ADJACENT WALL; TEXTURE: SUEDE	PER VA; FLUSH MOUNT
	CR-1	CRASH / BUMPER RAIL			PER VA
	CT-1	CERAMIC TILE	DATILE (OR APPROVED EQUAL)	MODERN DIMENSIONS - ARCTIC WHITE 0190 (1)	PER VA
	CT-2	CERAMIC TILE	DATILE (OR APPROVED EQUAL)	MODERN DIMENSIONS - BISCUIT K175 (1)	PER VA
	CT-3	CERAMIC TILE	DATILE (OR APPROVED EQUAL)	MODERN DIMENSIONS - URBAN PUTTY 0160 (1)	PER VA
	CT-4	CERAMIC TILE	DATILE (OR APPROVED EQUAL)	MODERN DIMENSIONS - DESERT GRAY X114 (1)	PER VA
	CT-5	CERAMIC TILE	DATILE (OR APPROVED EQUAL)	MODERN DIMENSIONS	PER VA
	GT-1	GLASS MOSAIC TILE (FLAT TOP COVE BASE)	DATILE	COLOR WAVE CLASSIC BLENDS	PER VA; ACCENT FOR TOILET ROOMS
CEILINGS	GT-2	GLASS MOSAIC TILE (FLAT TOP COVE BASE)	DATILE	COLOR WAVE CLASSIC SOLIDS	PER VA; ACCENT FOR TOILET ROOMS
	WP-1	HIGH-IMPACT WALL PROTECTION			PER VA
	AT-1	ACOUSTIC CEILING TILE (WASHABLE)			PER VA
	AT-2	ACOUSTIC CEILING TILE			PER VA
	GWB-1	GYP. WALL BOARD (SPECIAL COATING)			PER VA
	GWB-2	GYP. WALL BOARD			PER VA
					PER VA
					PER VA
					PER VA
					PER VA
PAINT	P-1	PAINT (SPECIAL COATING)			PER VA
	P-2	PAINT	KELLY MOORE (OR APPROVED EQUAL)	OW225-1 PRISTINE LINEN	PER VA; PRIMARY
	P-3	PAINT	KELLY MOORE (OR APPROVED EQUAL)	[SELECT 1 TO PROPOSE IN OVERALL FINISH PKG: KM3405-2 PORTSMOUTH OLIVE / KM3420-2 FRONTENAC HILLS / KM3411-1 HILLSMERE / KM3805-2 CUBICLE BLUES / KM3852-2 CONSTANCE / KM4031-3 AFRICAN DESERT / KM4030-2 SUPREME BEAN / KM3541-2 HACIENDA CLAY]	PER VA; ACCENT
CASEWORK	PLAM-1	PLASTIC LAMINATE	WILSONART CONTRACT (OR APPROVED EQUAL)	KENSINGTON MAPLE 10776 [SELECT APPROPRIATE OPTION: CHEMSUR OR SOLICOR]	PER VA
	S-1	SOLID SURFACE	DUPONT (OR APPROVED EQUAL)	CORIAN TERRA COLLECTION, RICE PAPER	PER VA

FINISH SCHEDULE - PHASE 3												
ROOM NUMBER	ROOM NAME	WALLS				CEILING		FLOOR			CASEWORK COUNTER TOPS	REMARKS
		NORTH	EAST	SOUTH	WEST	MATERIAL	FINISH	MATERIAL	BASE	CABINETS		
E2-410	CATH LAB	P-1	P-1	P-1	P-1	GWB-1 W/ P-1; INTEGRATED SYSTEM	SPECIAL	RSF-1; RSF-2; RSF-3	RB-1	CUSTOM	S-1	CG-1; CR-1; INTEGRAL BASE; CUSTOM MODULAR AUTOMATED DISPENSING CABINETS; SEE PLAN FOR FLOOR PATTERN
E2-410A	(E) SCRUB	P-1	P-1	P-1	P-1	AT-2	STANDARD	RSF	RB-1			CG-1; INTEGRAL BASE
E2-410B	CATH GEN. EQUIP.	P	P	P	P	AT		RSF	RB-1			INTEGRAL BASE
E2-412	SOILED HOLD	P-1	P-1	P-1	P-1	GWB-1	SPECIAL	WSF-1	WSF-1			
E2-414	CT/CATH CONTROL	P	P	P	P	AT-2	STANDARD	RSF	RB-1	PLAM-1	PLAM-1	CG-1; CR-1; INTEGRAL BASE

FINISH NOTES	
ALL PROCEDURE ROOMS AND CONTROL ROOMS WITHIN AREA OF WORK SHALL MEET THE FOLLOWING:	
1. DESKS AND TABLES SHALL HAVE BULL-NOSED EDGE RATHER THAN SQUARED EDGE.	
2. IN ORDER TO AVOID DIRT COLLECTION, TRANSITION BETWEEN DESKS / TABLETOPS AND HEADWALL SHALL BE ROUNDED RATHER THAN 90-DEGREE CORNERS.	
3. FLOORING SHALL BE COVERED UP SMOOTHLY, ADJACENT TO EQUIPMENT AND WALLS.	
4. IN ORDER TO AVOID INJURY OR DAMAGE, NO SHARP METAL TRIM BETWEEN COVING AND WALLS SHALL BE INSTALLED.	
5. INSTALL STEEL PLATE TO PROTECT AGAINST COLLISION WITH MONITORS.	

7/11/2014 1:31:25 PM HILLIARD ARCHITECTS INC. COPYRIGHT

CONSULTANTS:		ARCHITECT/ENGINEERS:		 <div>251 Post Street, Suite 620 San Francisco, CA 94108 Tel 415 989 6400 www.HilliardArchitects.com</div>	 <div>KEY PLAN</div>	Drawing Title PHASE 3 - CATH LAB FINISH PLAN	Project Title VA PALO ALTO B-100 CATH LAB RENOVATION & HYBRID OR	Project Number 640-13-134	Office of Construction and Facilities Management 	
Revisions:		Date				Approved: Project Director	Location VAPAHCs - PALO ALTO CAMPUS 3801 MIRANDA AVE, PALO ALTO, CA 94304	Building Number		
							Date 07.09.2014	Checked	Drawing Number AS4-33	
								Drawn		
								Author	Dwg. of	



KEYNOTES

A
B
C
D
E
F

VA FOIA b7
Re [] [] [] [] [] [] [] [] [] []
7/11/2014 1:31:28 PM
HILLIARD ARCHITECTS INC. COPYRIGHT

CONSULTANTS:	



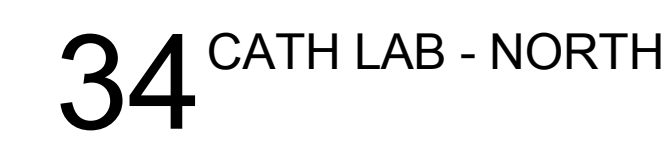
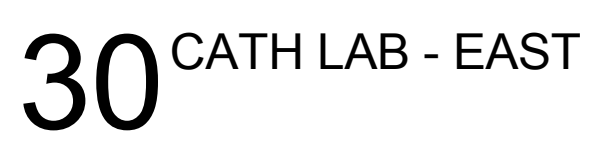
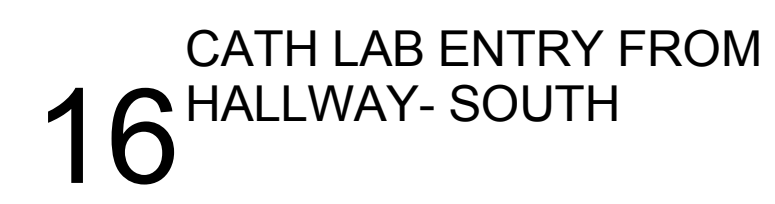
Hilliard
ARCHITECTS

KEY PLAN

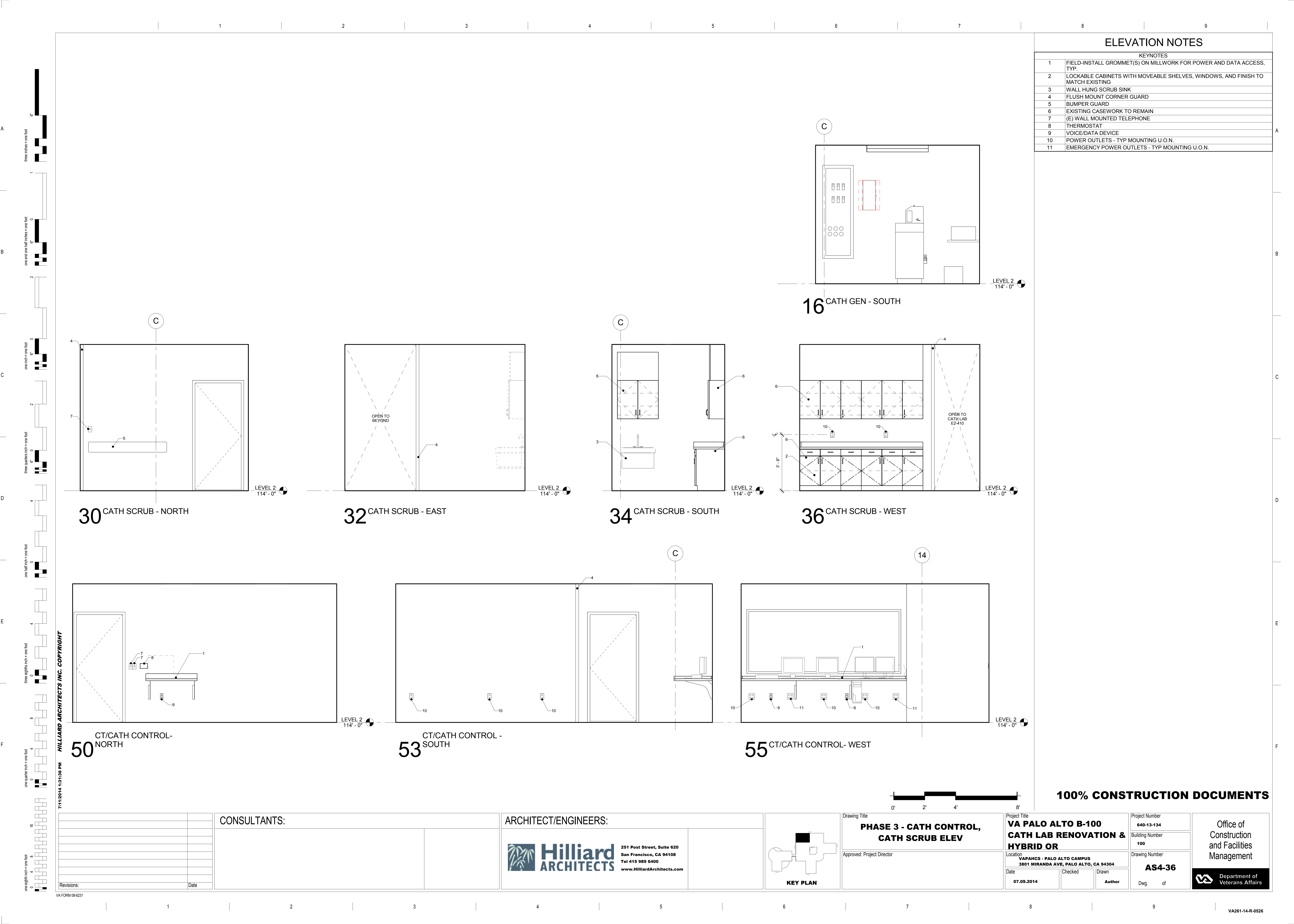
Approved: Project Director

 Department of
Veterans Affairs

A261-14-R-0526



VA261-14-R-0526



A

B

C

D

E

F

A

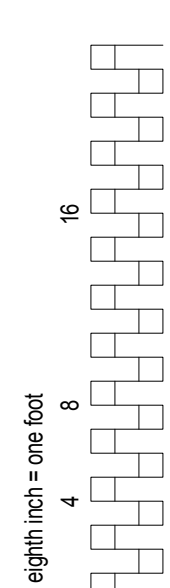
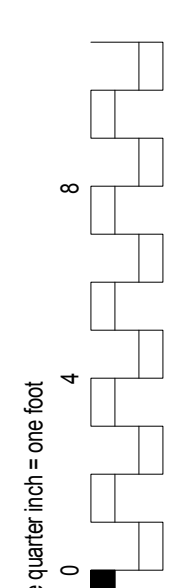
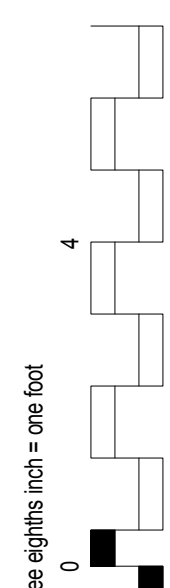
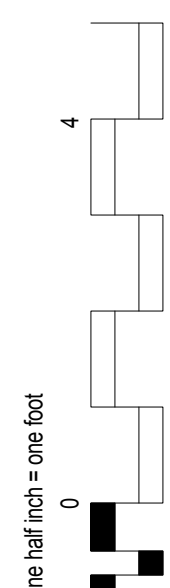
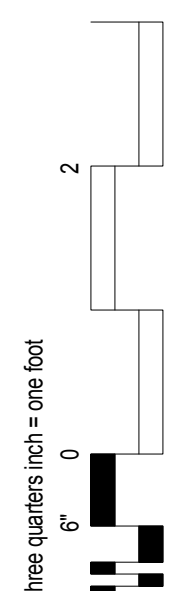
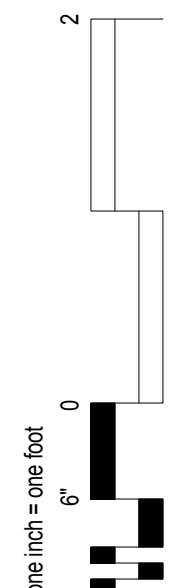
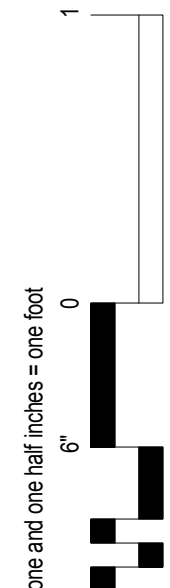
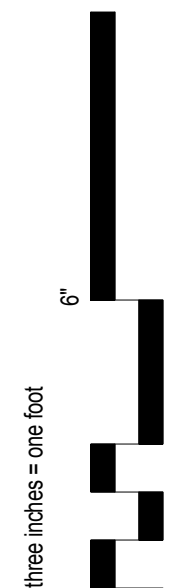
B

C

D

E

F



7/11/2014 1:31:37 PM HILLIARD ARCHITECTS INC. COPYRIGHT

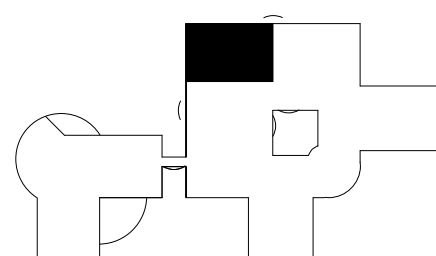
VA FORM 08-6231

CONSULTANTS:

ARCHITECT/ENGINEERS:



**Hilliard
ARCHITECTS**
251 Post Street, Suite 620
San Francisco, CA 94108
Tel 415 989 6400
www.HilliardArchitects.com



KEY PLAN

Drawing Title

EXTERIOR DETAILS

Approved: Project Director

Project Title

**VA PALO ALTO B-100
CATH LAB RENOVATION &
HYBRID OR**

Location
**VAPAHCs - PALO ALTO CAMPUS
3801 MIRANDA AVE, PALO ALTO, CA 94304**

Date
07.09.2014

Checked
Checker

Drawn
Author

Project Number

640-13-134

Building Number

100

Drawing Number

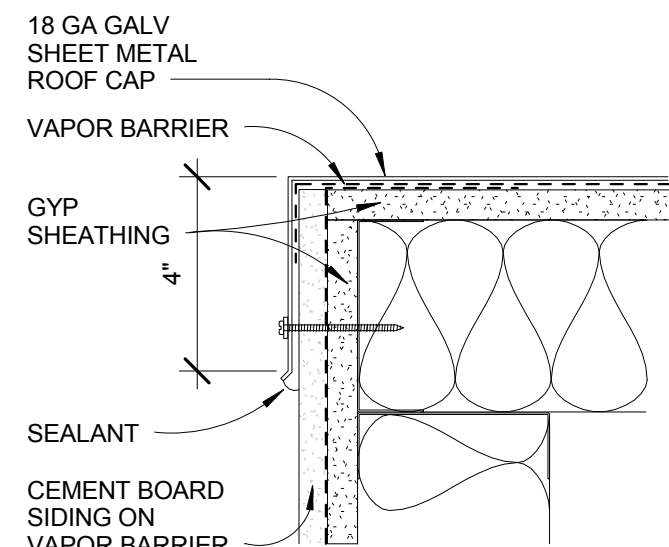
AS5-11

Dwg. of

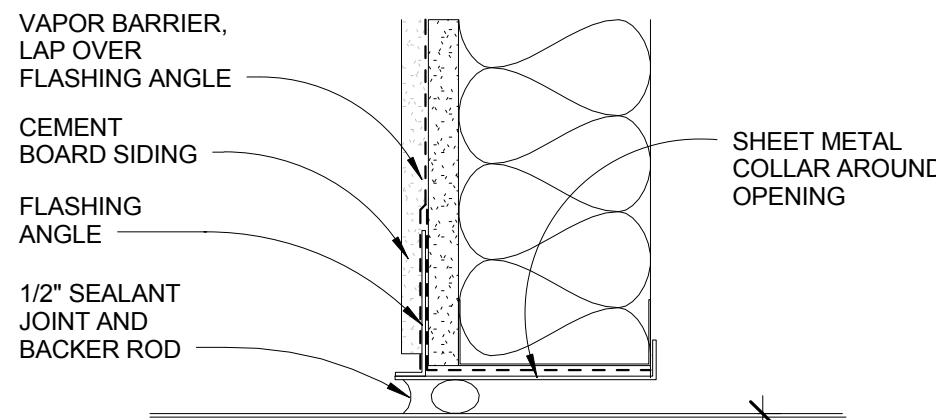
Office of
Construction
and Facilities
Management



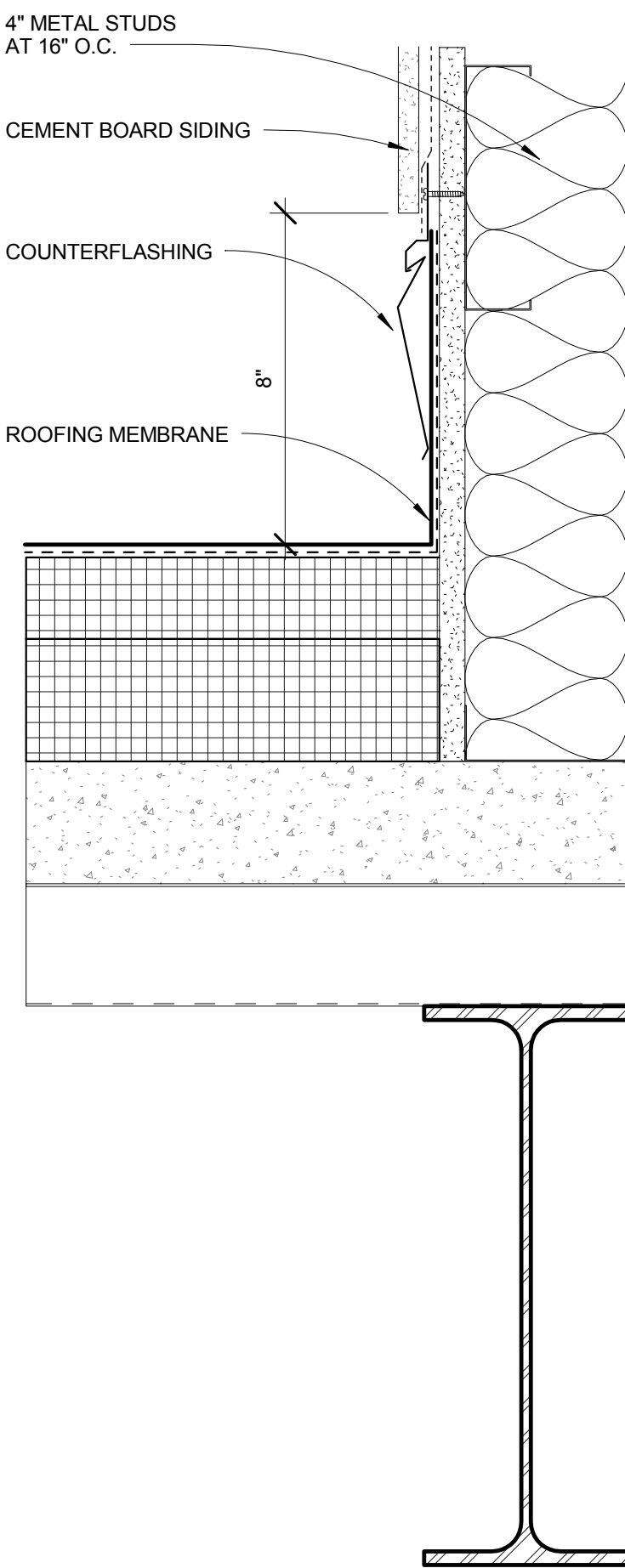
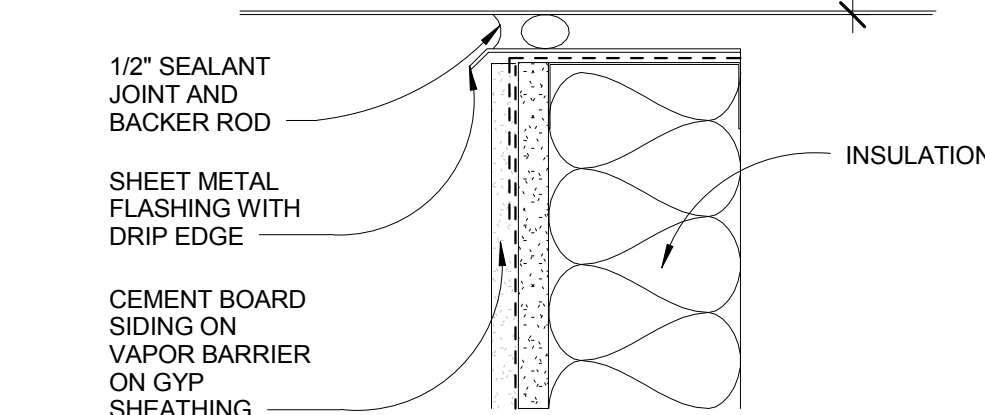
VA261-14-R-0526



08 ROOF - DOGHOUSE ROOF
EDGE



28 ROOF - DUCT
PENETRATION DETAIL



58 ROOF - MECH DOGHOUSE
AT ROOF

100% CONSTRUCTION DOCUMENTS

DOOR SIZES										
MK	WIDTH			HEIGHT			MK	HEIGHT		
	IN	(mm)		IN	(mm)			IN	(mm)	
A	1'-6"	(457)	6'-8"	(2032)	N	2'-0"	(610)	7'-0"	(2134)	
B	2'-0"	(610)	6'-8"	(2032)	O	2'-6"	(660)	7'-0"	(2134)	
C	2'-2"	(660)	6'-8"	(2032)	P	2'-4"	(711)	7'-0"	(2134)	
D	2'-4"	(711)	6'-8"	(2032)	Q	2'-6"	(762)	7'-0"	(2134)	
E	2'-6"	(762)	6'-8"	(2032)	R	2'-8"	(813)	7'-0"	(2134)	
F	2'-8"	(813)	6'-8"	(2032)	S	3'-0"	(914)	7'-0"	(2134)	
G	2'-10"	(864)	6'-8"	(2032)	T	3'-4"	(1016)	7'-0"	(2134)	
H	3'-0"	(914)	6'-8"	(2032)	U	3'-8"	(1067)	7'-0"	(2134)	
I	3'-2"	(965)	6'-8"	(2032)	V	3'-6"	(1118)	7'-0"	(2134)	
J	3'-4"	(1016)	6'-8"	(2032)	W	3'-10"	(1168)	7'-0"	(2134)	
K	3'-8"	(1118)	6'-8"	(2032)	X	4'-0"	(1219)	7'-0"	(2134)	
L	3'-10"	(1168)	6'-8"	(2032)	Y	3'-0"	(914)	8'-0"	(2438)	
M	1'-6"	(457)	7'-8"	(2337)	Z	4'-6"	(1332)	7'-0"	(2134)	

DOOR MODIFICATIONS
A LAMINATED GLASS
D DOUBLE GLAZED
 TEMPERED GLASS
H ELECTRIC HOLD
L LOUVER
LP LIGHT PROOF LOUVER
M MECH. SEAL FOR
 LIGHT PROOF &
 SOUND RETARDING DOOR
T TEMPERED GLASS
U UNDERCUT 1" [25mm]
V LEAD GLASS
F FIRE RATED GLAZING

DOOR SYMBOL

FRAME TYPE (JAMB DETAIL)



DOOR TYPE

DOOR SIZE

DOUBLE LETTERS
EQUAL SIZE OF
LEAF FOR PAIR
OF DOORS

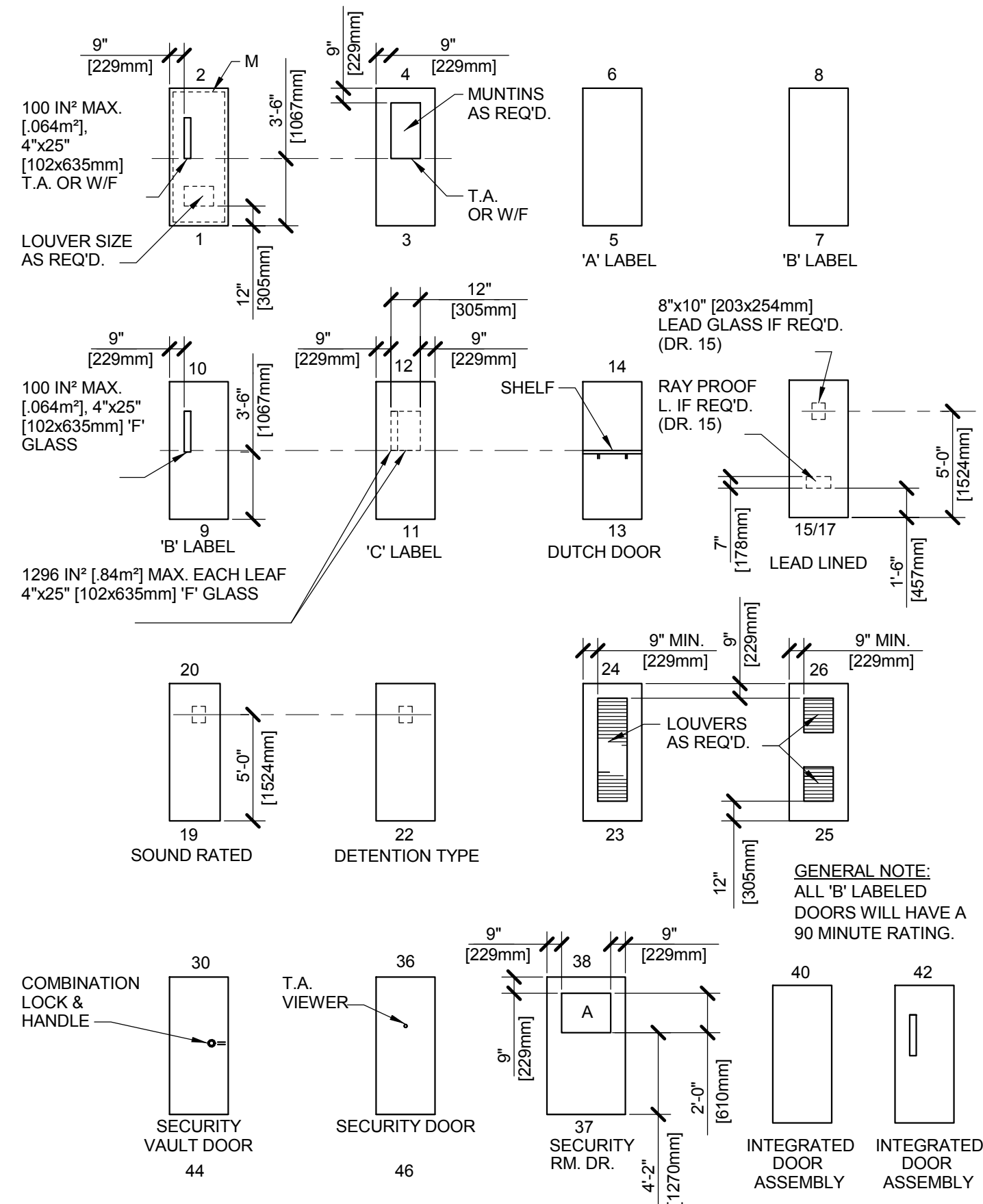
DOOR
MODIFICATION

LEGEND (SEE ELEVATIONS)

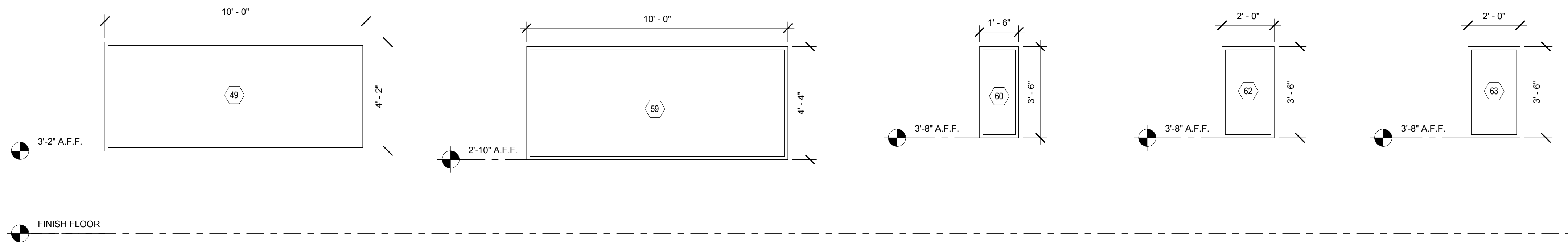
	GLASS OR LOUVER REQUIRED BY MODIFICATION
	GLASS OR LOUVER REQUIRED BY ELEVATION TYPE

NOTES:

1. ALL DOORS SHALL BE FLUSH - 1 3/4" [44mm] THICK UNLESS NOTED OTHERWISE.
2. TOP & SIDE RAILS SHALL BE 9" [229mm] MIN. BOTTOM RAILS SHALL BE 12" MIN. [305mm]
3. DOOR TYPES 7, 8, & 9 SHALL NOT BE USED FOR OPPOSING DOORS.
4. FOR SCHEDULING DOOR TYPES, SEE PG-18-14.
5. EVEN NUMBERS ARE METAL; ODD NUMBERS ARE WOOD.
6. FIRE RATING (B = 90MIN., C = 45MIN., N = NON-RATED)



2 DOOR TYPES



DOOR SCHEDULE

ID	DESCRIPTION	FIRE RATING	DOOR TYPE	DOOR LEAF SIZE	WIDTH	HEIGHT	THICKNESS	FRAME TYPE	FRAME MATERIAL	HARDWARE GROUP	COMMENTS
N2.1	DOUBLE EVEN	1 HR	6	VV	7'- 4"	7'- 0"	0'- 1 1/2"	1	HM	SH-3C	
N2.2	UNEQUAL SINGLE EGRESS W VISION PANEL	N.A.	15	XN	4'- 0"	7'- 0"	0'- 1 1/2"	2	HM	10H	LEADLINED: VA to confirm: actuator on BOTH sides of door?
N2.3	SINGLE FLUSH SOLID	N.A.	1/2	S	3'- 0"	7'- 0"	0'- 1 1/2"	1	HM	4Q	
N2.4	SINGLE FLUSH SOLID	N.A.	1/2	U	3'- 6"	7'- 0"	0'- 1 1/2"	1	HM	4K	
N2.5	SINGLE FLUSH SOLID	N.A.	1/2	S	3'- 0"	7'- 0"	0'- 1 1/2"	1	HM	SH-3C	
N2.6	SINGLE FLUSH SOLID	N.A.	1/2	S	3'- 0"	7'- 0"	0'- 1 1/2"	1	HM	1	
N2.7	SINGLE FLUSH VISION PANEL	N.A.	15	S	3'- 0"	7'- 0"	0'- 1 1/2"	2	HM	4K	LEADLINED DOOR AND FRAME
N2.8	SINGLE FLUSH SOLID	N.A.	6	S	3'- 0"	7'- 0"	0'- 1 1/2"	1	HM	29/4U10	
N2.9	SINGLE FLUSH SOLID	N.A.	6	S	3'- 0"	7'- 0"	0'- 1 1/2"	1	HM	29/4U10	
N2.10	SINGLE FLUSH SOLID	1 HR	6	X	4'- 0"	7'- 0"	0'- 1 1/2"	1	HM	SH-10	
N2.11	SINGLE FLUSH VISION PANEL	N.A.	11/12	V	3'- 8"	7'- 0"	0'- 1 1/2"	1	HM	4F	
N2.12	SINGLE FLUSH SOLID	N.A.	1/2	S	3'- 0"	7'- 0"	0'- 1 1/2"	1	HM	4K	
N2.15	DOUBLE UNEVEN	(E)	(E)	S	6'- 0"	7'- 0"	0'- 2"	1	HM		(E) door to receive (N) door controls
N3.1	SINGLE FLUSH SOLID	N.A.	1/2	S	3'- 0"	7'- 0"	0'- 1 1/2"	1	HM	4Q	
N3.3	DOUBLE UNEVEN	(E)	(E)	S	6'- 0"	7'- 0"	0'- 2"	1	HM		(E) door to receive (N) door controls
N3.4	SINGLE FLUSH SOLID	N.A.	1/2	S	3'- 0"	7'- 0"	0'- 2"	1	HM	4K	

KEY - HARDWARE GROUP	
HARDWARE GROUP	COMMENTS
INT - GENERAL	
HW-2	
HW-3	
HW-5	
HW-8	
INT- SECURITY	
SH3	
SH10	

WINDOW SCHEDULE

Mark	To Room: Number	To Room: Name	Description	Width	Height	Comments
49	E2-410	CATH LAB		10' - 0"	4' - 2"	
59	E2-427	HYBRID OR		10' - 0"	4' - 4"	LEADED GLAZING
60	E2-427	HYBRID OR		1' - 6"	3' - 6"	LEADED GLAZING
62	E2-425A	HYBRID CONTROL		2' - 0"	3' - 6"	
63	E2-C33	SEMI-RESTRICTED HALLWAY		2' - 0"	3' - 6"	

7/11/2014 1:31:39 PM **HILLIARD ARCHITECTS INC. COPYRIGHT**

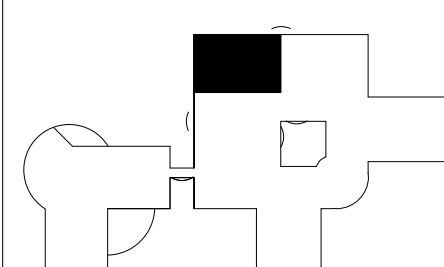
[illegible]

CONSULTANTS:

ARCHITECT/ENGINEERS:



**251 Post Street, Suite 620
San Francisco, CA 94108
Tel 415 989 6400
www.HilliardArchitects.com**



KEY PLAN

Drawing Title

DOOR & WINDOW SCHEDULE

Approved: Project Director

Project Title

**VA PALO ALTO B-100
CATH LAB RENOVATION &
HYBRID OR**

Location	VAPAHCS - PALO ALTO CAMPUS 3801 MIRANDA AVE, PALO ALTO, CA 94304
----------	---

Date

☒ Checked

Drawn

Project Number

640-13-134

Building Number

Drawing Number

AS6-12

Down of

Office of
Construction
and Facilities
Management

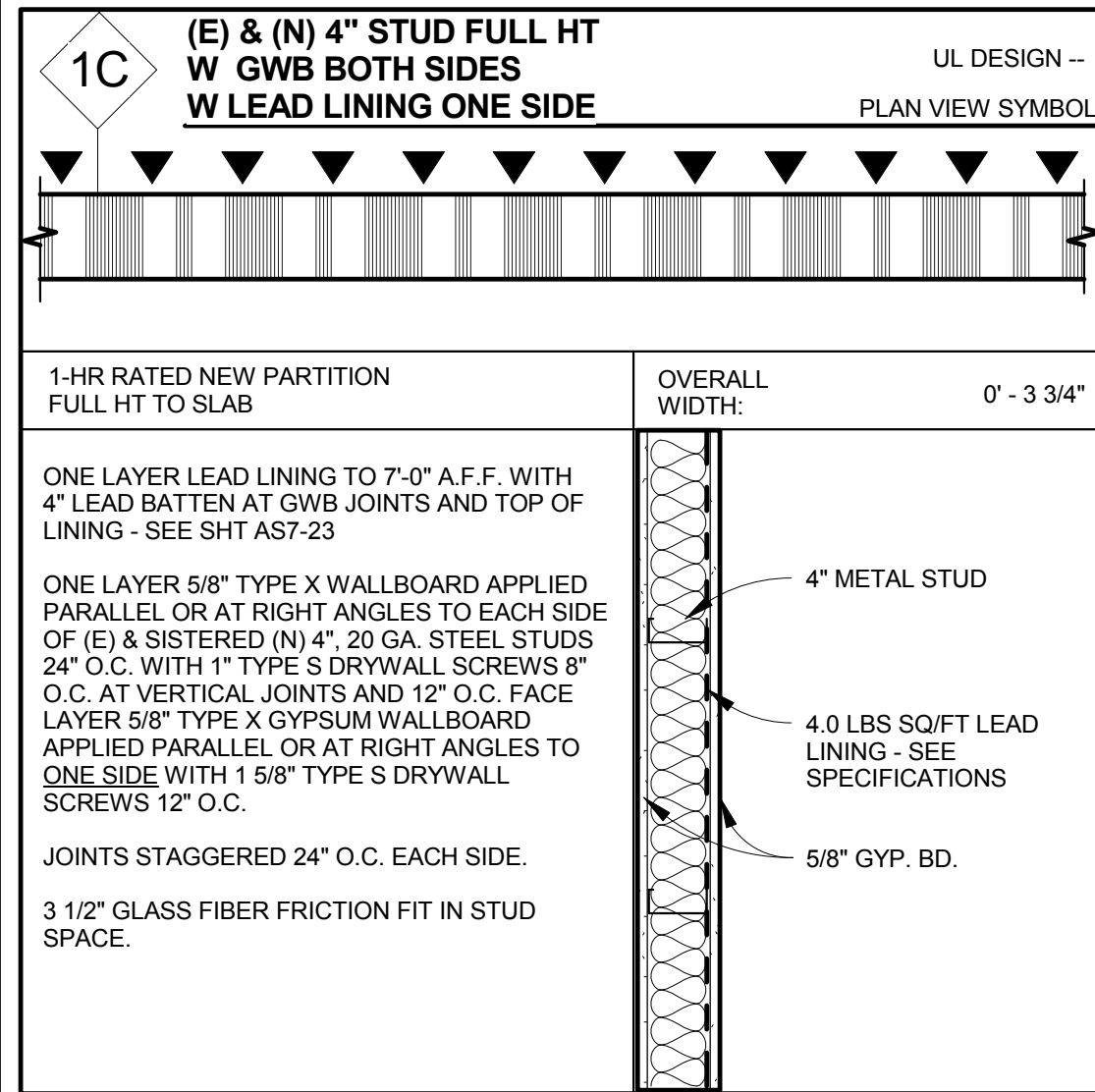
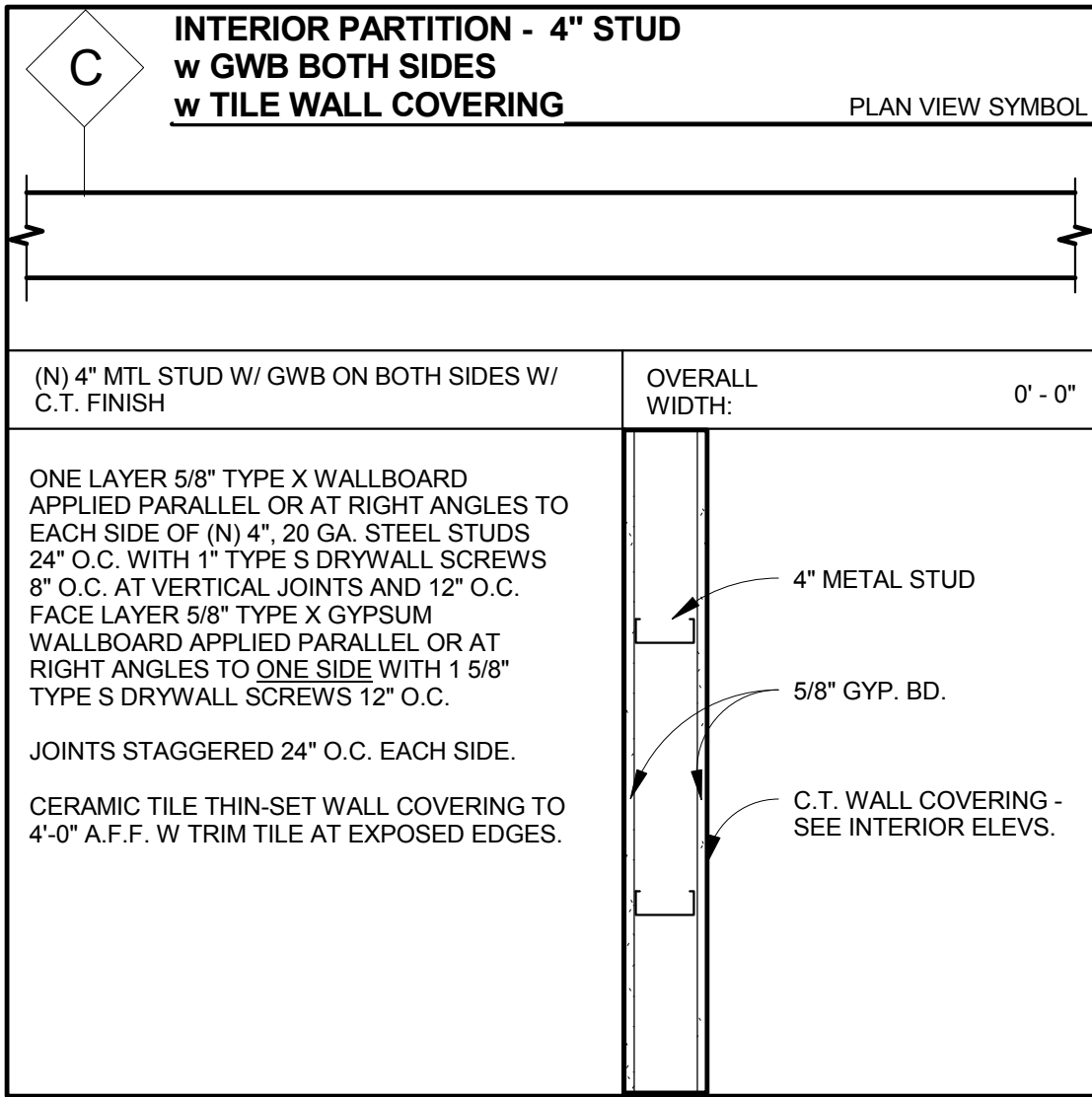
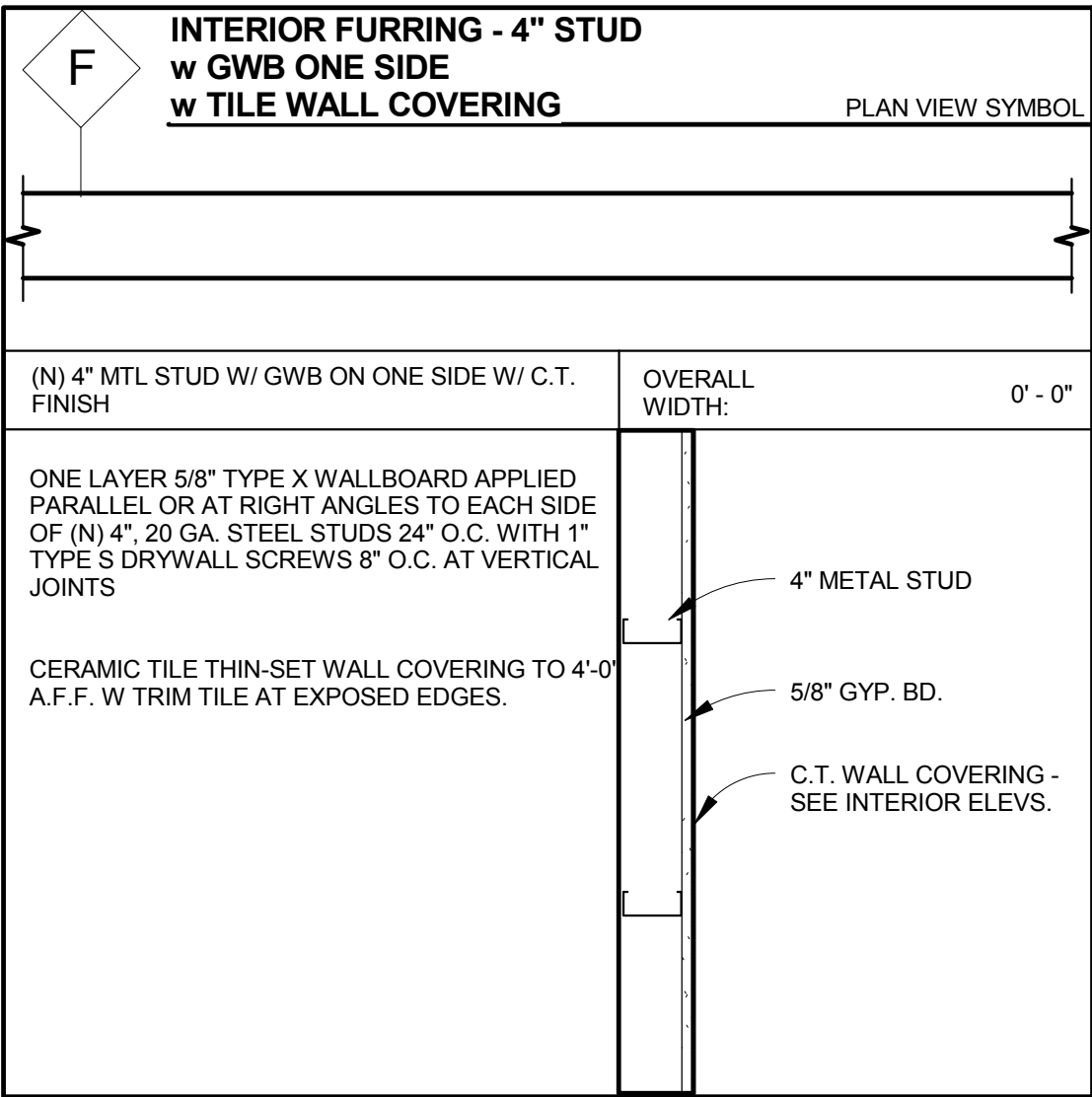
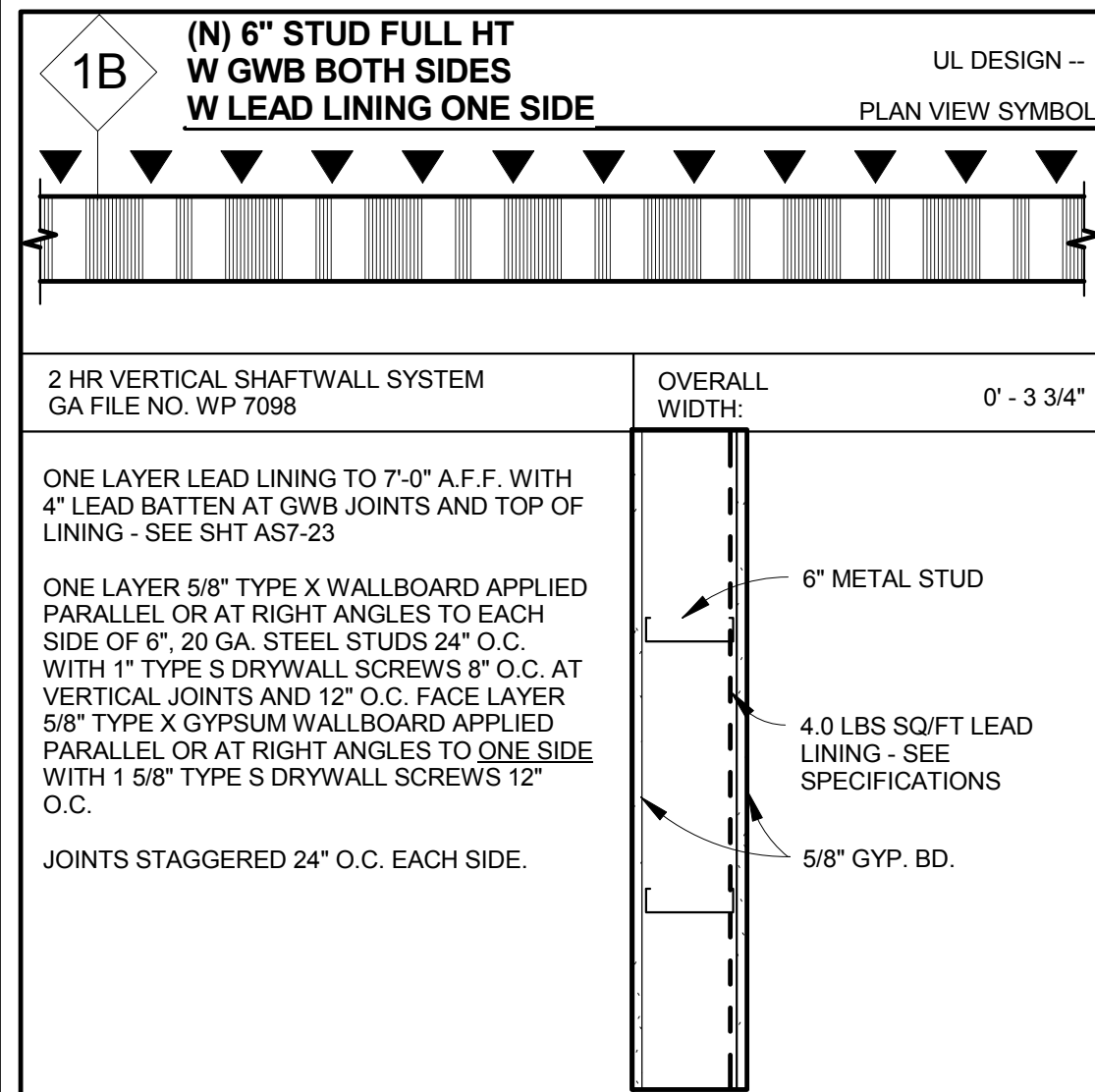
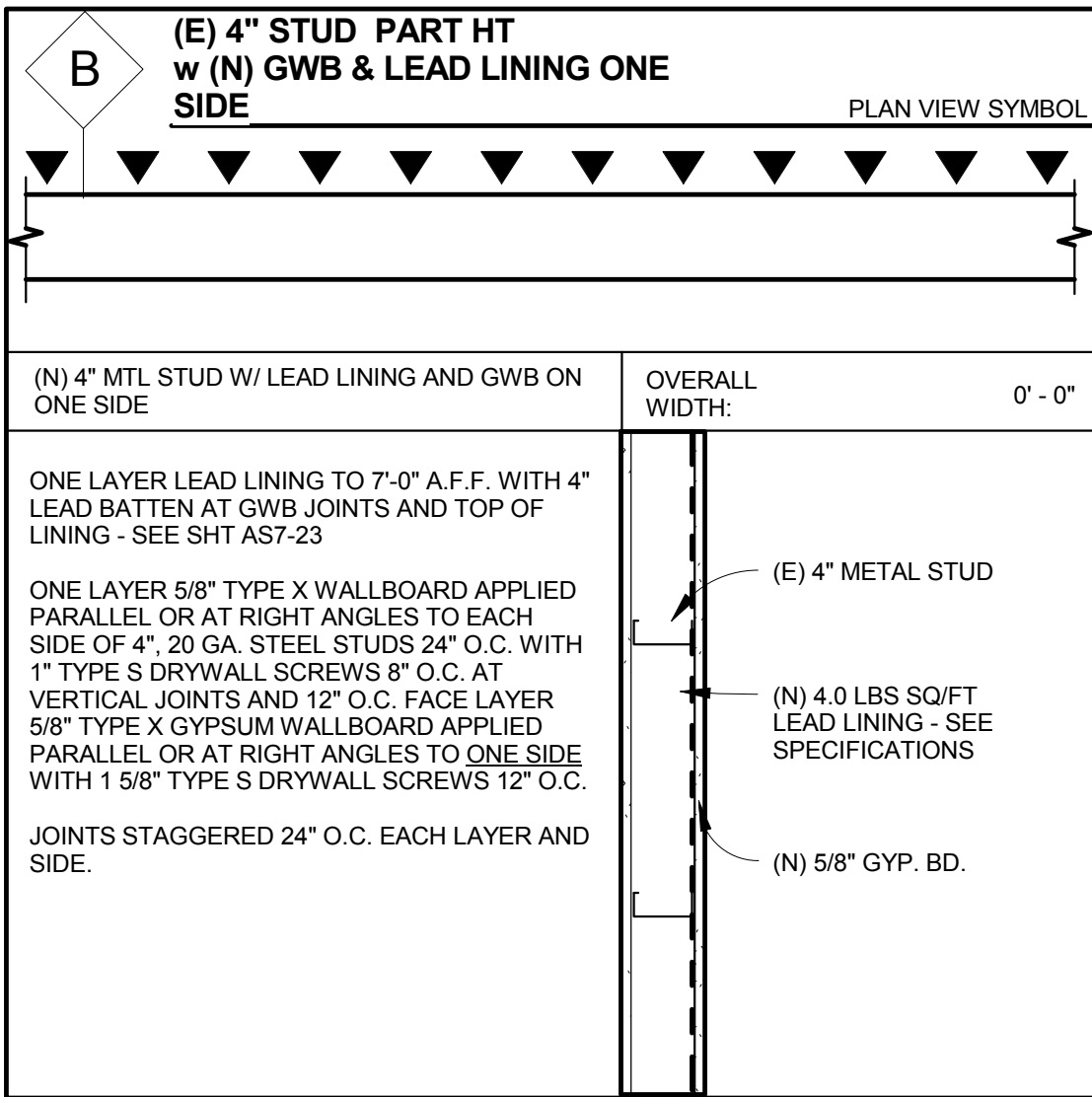
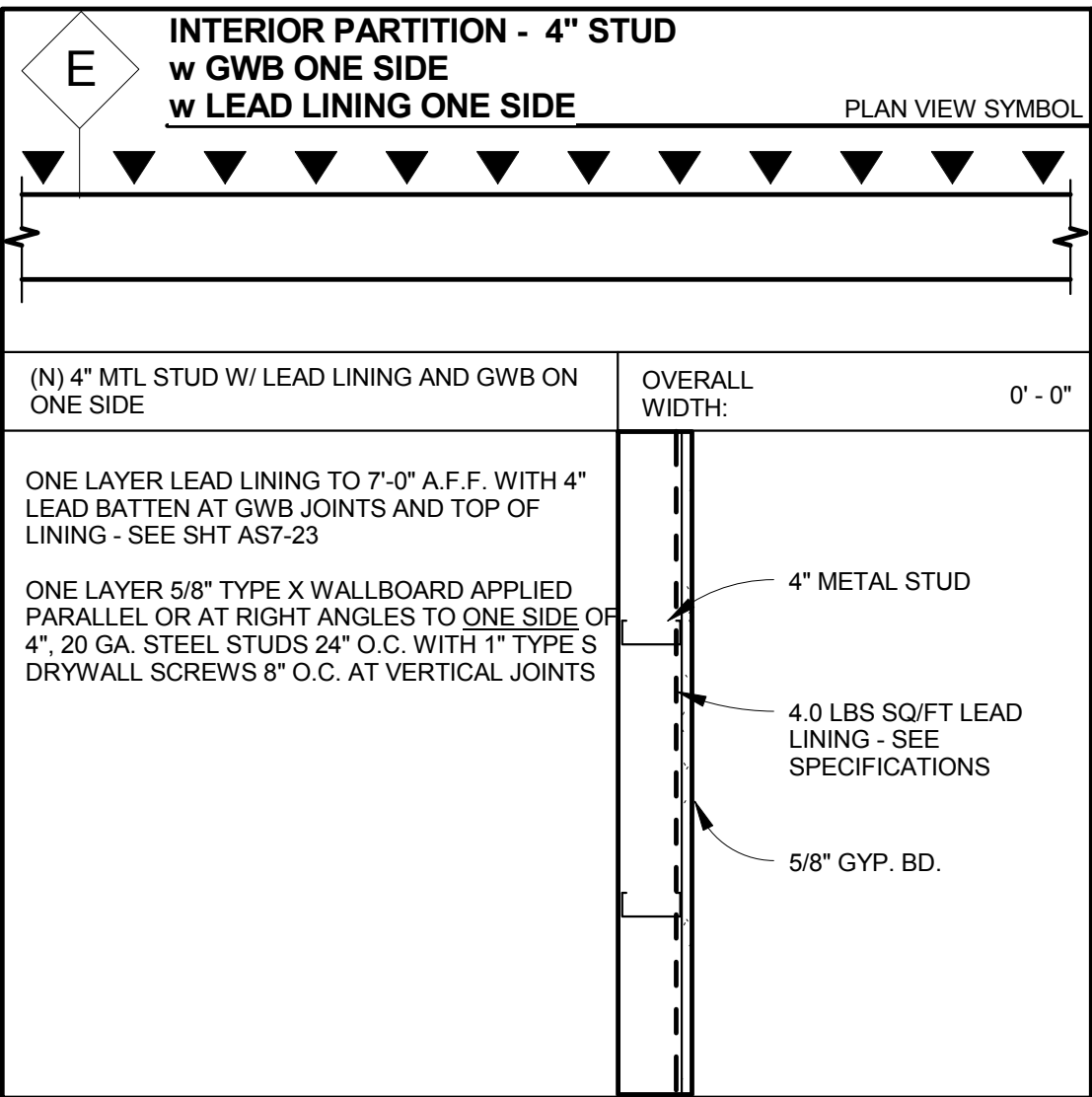
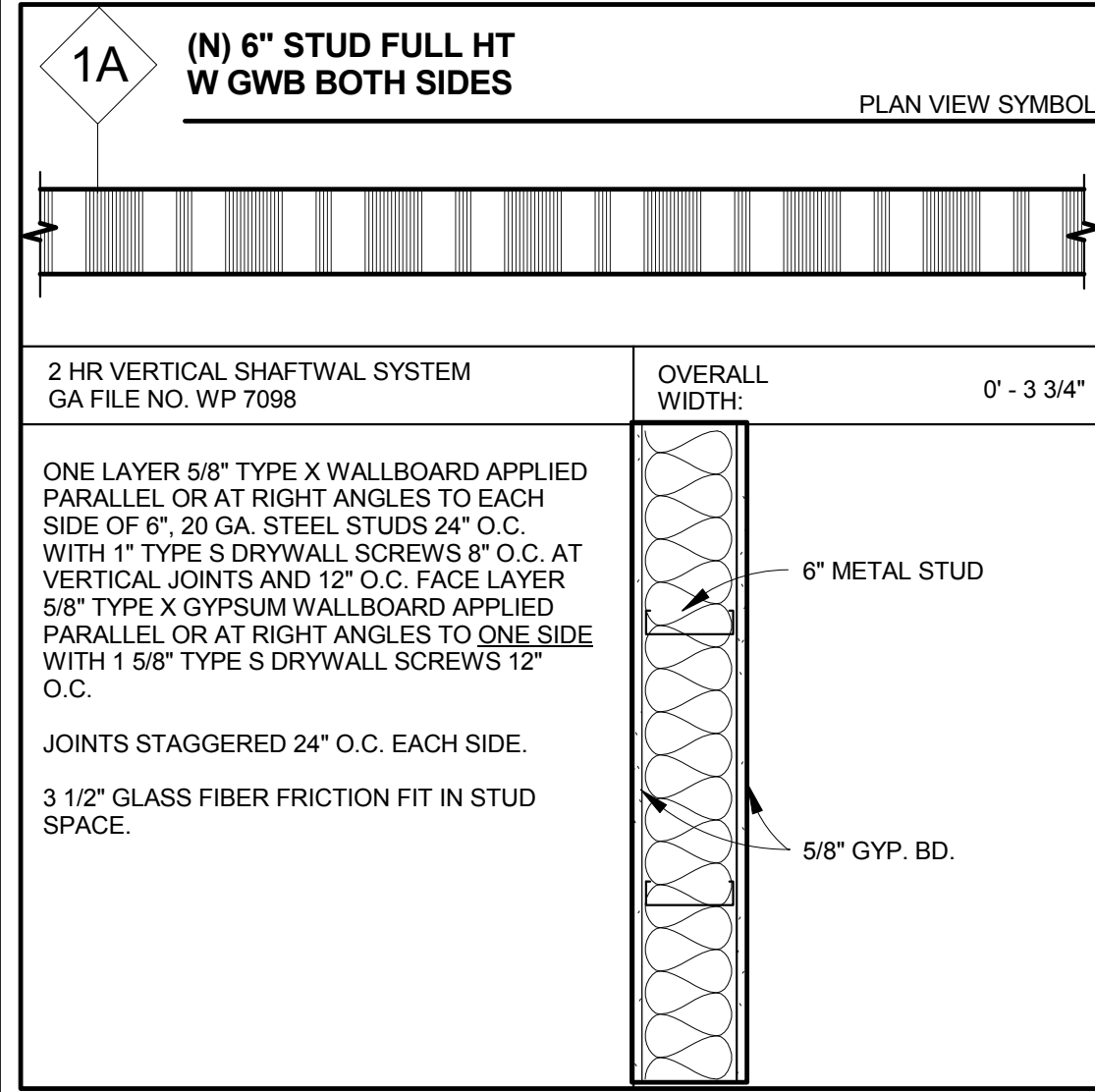
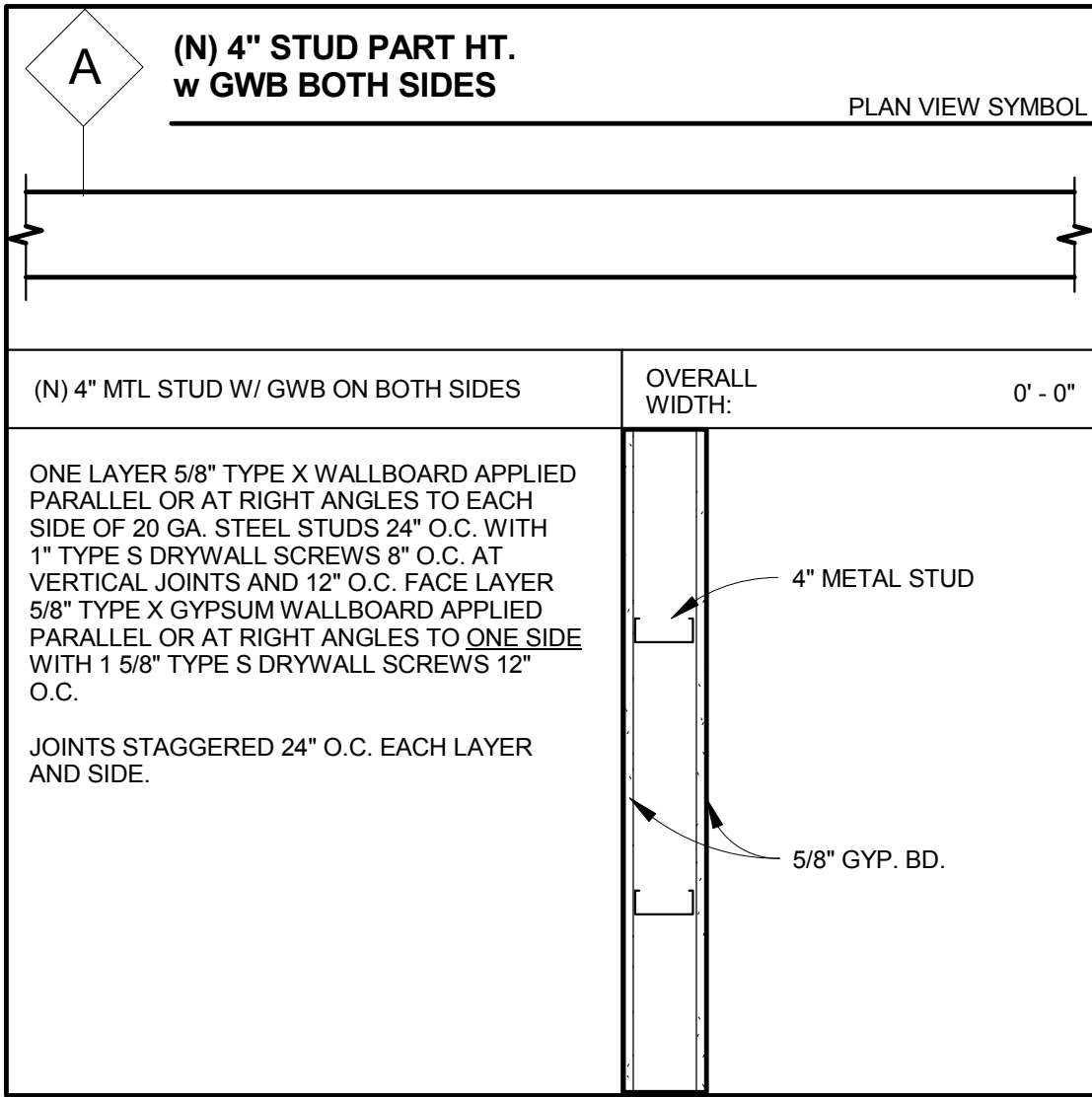
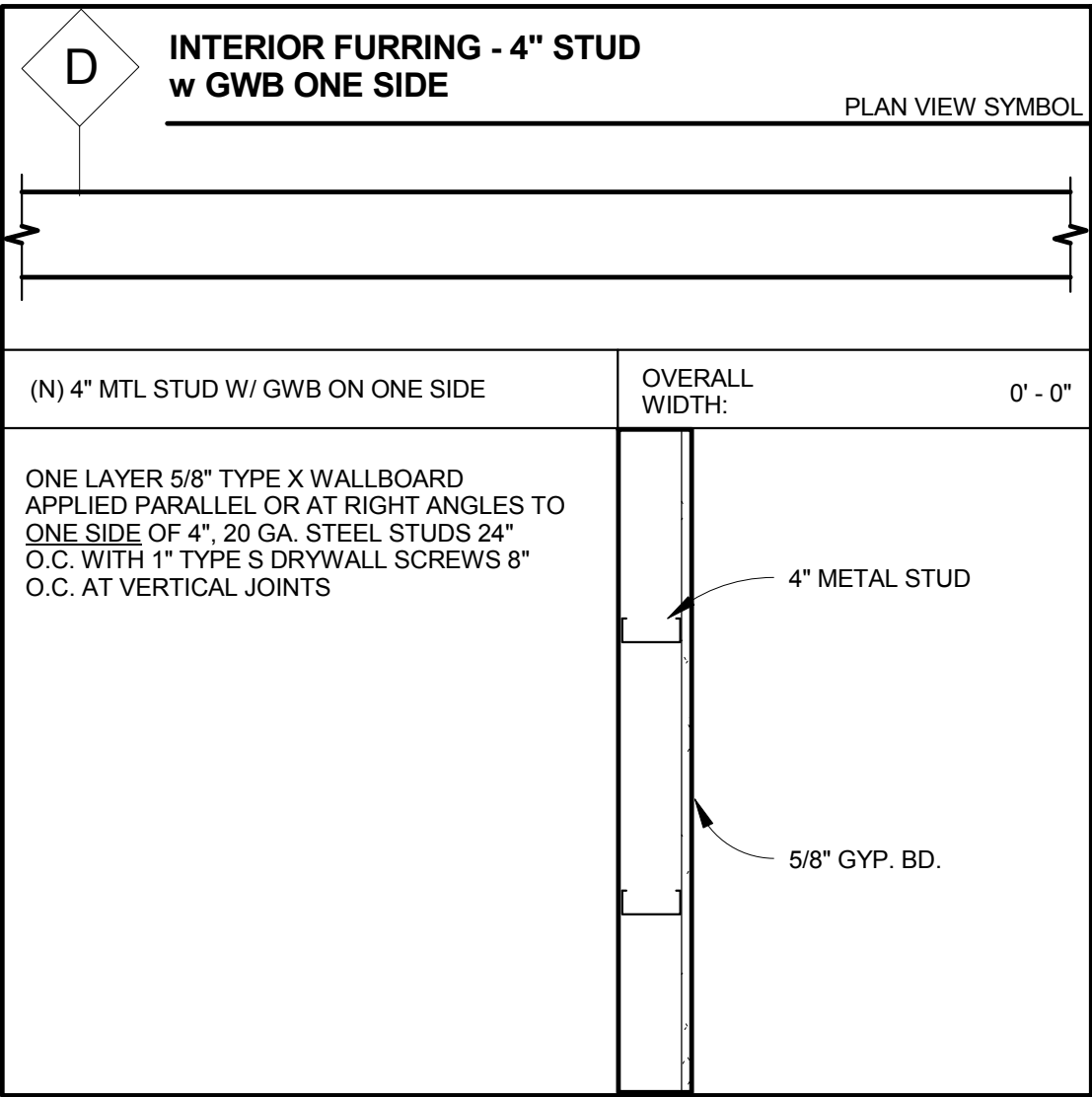
Department of
Veterans Affairs

[illegible]

NON-RATED

1 HOUR

INTERIOR WALLS



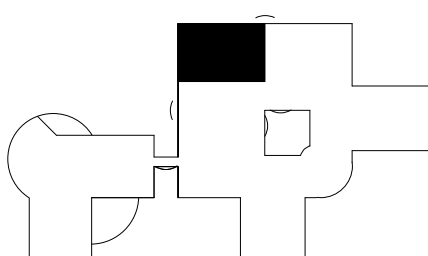
CONSULTANTS:

ARCHITECT/ENGINEERS:



Hilliard
ARCHITECTS

251 Post Street, Suite 620
San Francisco, CA 94108
Tel 415 989 6400
www.HilliardArchitects.com



KEY PLAN

PARTITION SCHEDULE

Project Title
**VA PALO ALTO B-100
CATH LAB RENOVATION &
HYBRID OR**

Location
**VAPAHCs - PALO ALTO CAMPUS
3801 MIRANDA AVE, PALO ALTO, CA 94304**

Date
07.09.2014

Checked

Drawn

Author

Project Number
640-13-134

Building Number
100

Drawing Number
AS6-15

Dwg. of

Office of
Construction
and Facilities
Management



Department of
Veterans Affairs

100% CONSTRUCTION DOCUMENTS

10 RATED PARTN TO DECK
-PARALLEL

12 PARTITION TO DECK
PARALLEL

14 FLUSH MOUNT CORNER GUARD

16 CORNER GUARD

24 2 HOUR FR CORNER
GUARD

34 ALIGNED PARTITION

36 CRASH RAIL SECTION

28 STUD BRACING @ DECK

38 COLUMN FURRING

30 RATED PARTITION TO
DECK -PERPENDICULAR

32 PARTITION TO DECK -
PERPENDICULAR

54 PARTITION INTERSECTION

46 COVERED BASE

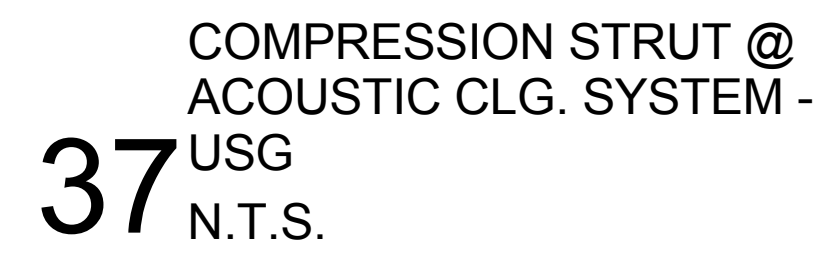
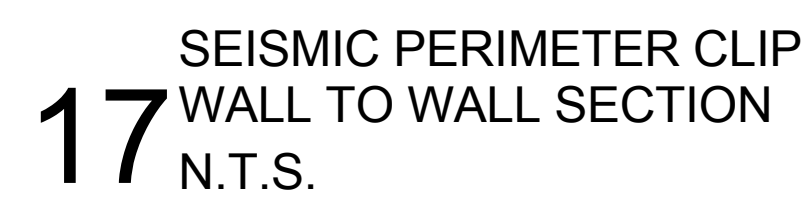
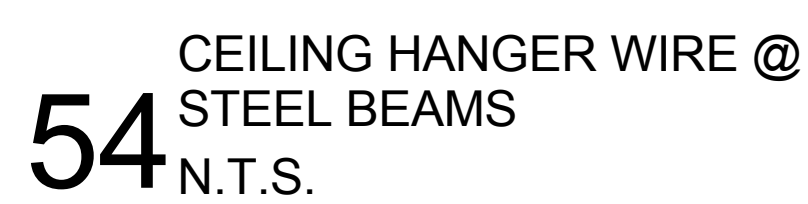
56^{BASE @ FURRING}

58 BACKING PLATE **100**

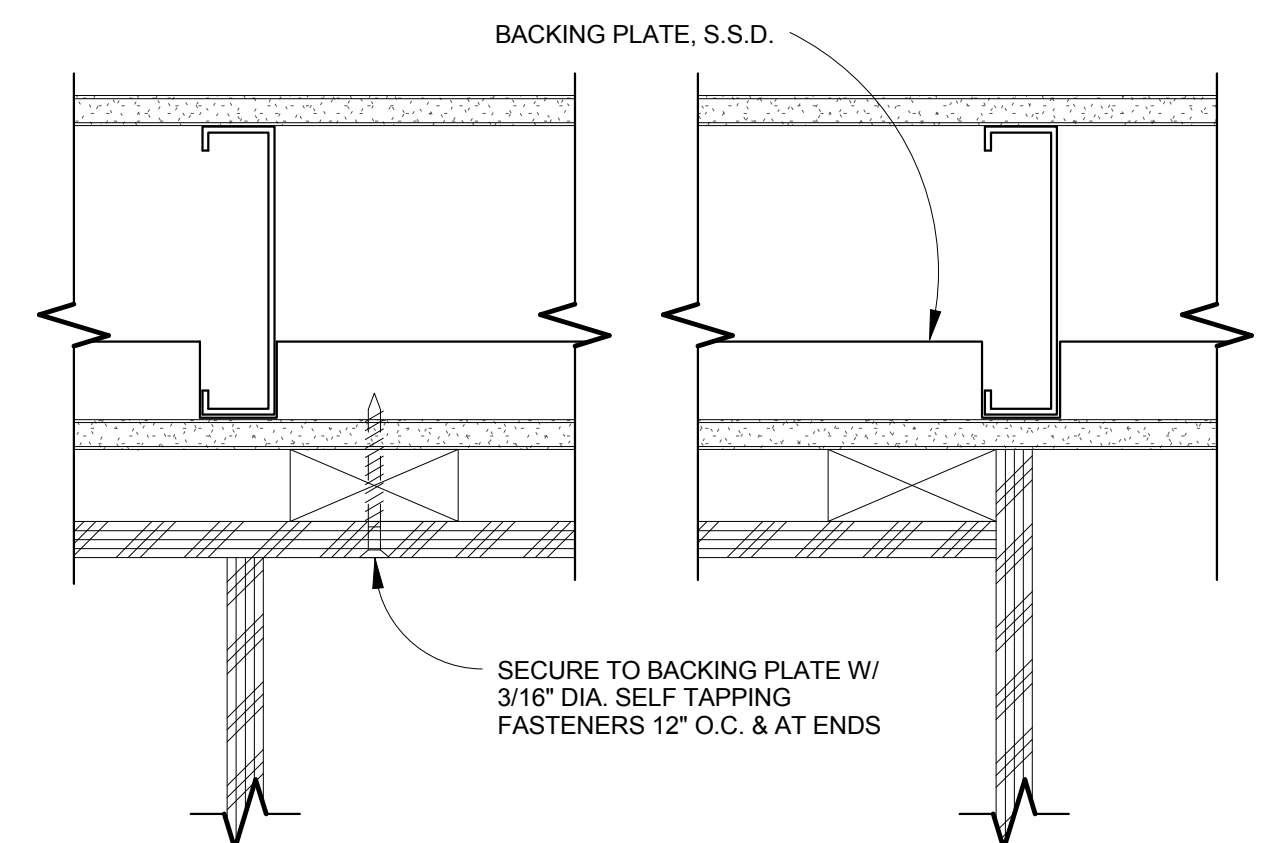
100% CONSTRUCTION DOCUMENTS

[illegible]





VA261-14-R-0526



58 CABINET ANCHORAGE AT WALL

VA261-14-R-0526

		CONSULTANTS:		ARCHITECT/ENGINEERS:		 <div> 251 Post Street, Suite 620 San Francisco, CA 94108 Tel 415 989 6400 www.HilliardArchitects.com </div>		 <p>KEY PLAN</p>		Drawing Title CASEWORK ELEV, SECTIONS, SCHEDULE & DETAILS		Project Title VA PALO ALTO B-100 CATH LAB RENOVATION & HYBRID OR		Project Number 640-13-134		Office of Construction and Facilities Management  Department of Veterans Affairs	
						Approved: Project Director		Location VAPAHCS - PALO ALTO CAMPUS 3801 MIRANDA AVE, PALO ALTO, CA 94304		Building Number 100		Drawing Number AS7-25					
						Date 07.09.2014		Checked Checker		Drawn Author		Dwg. of					
Revisions:		Date															