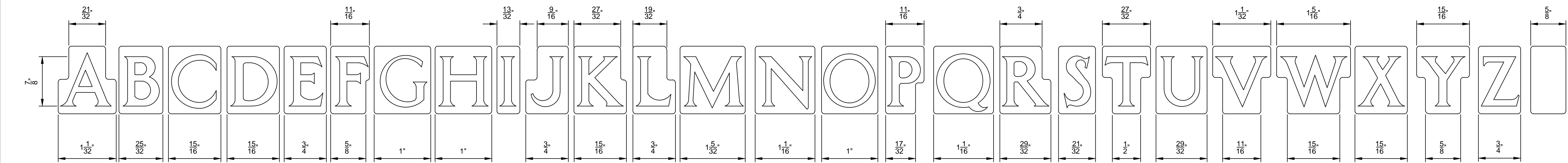
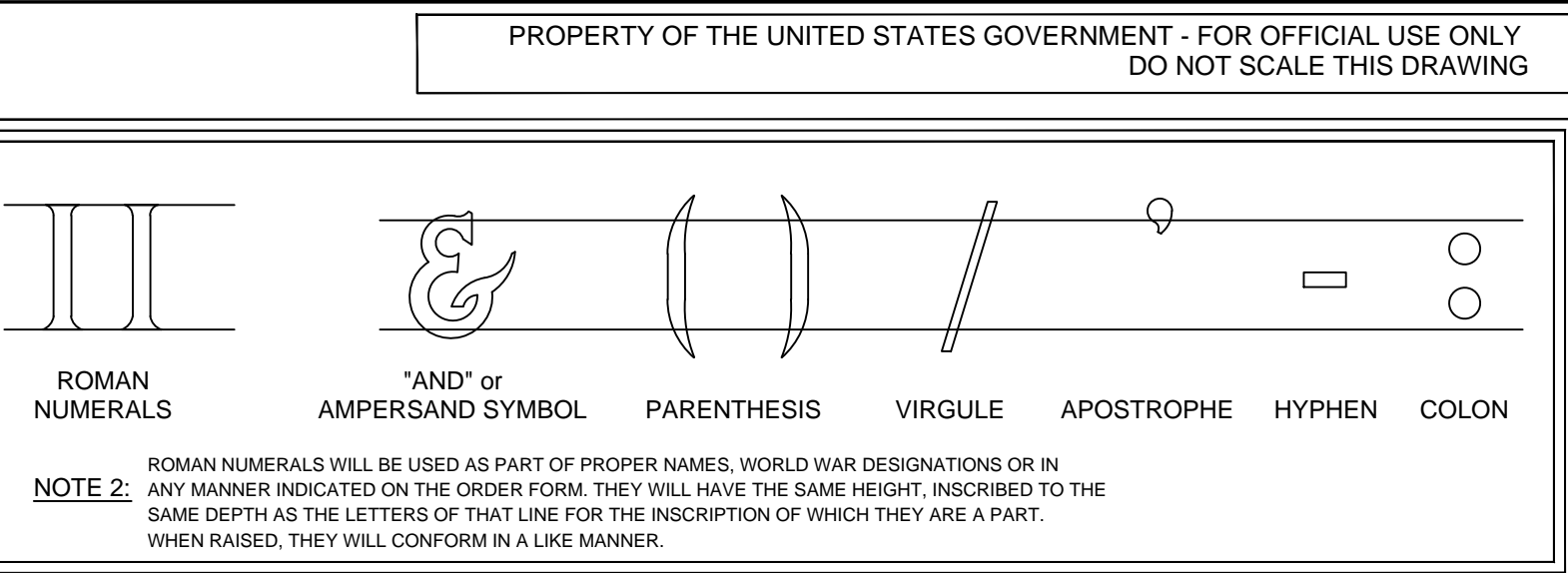
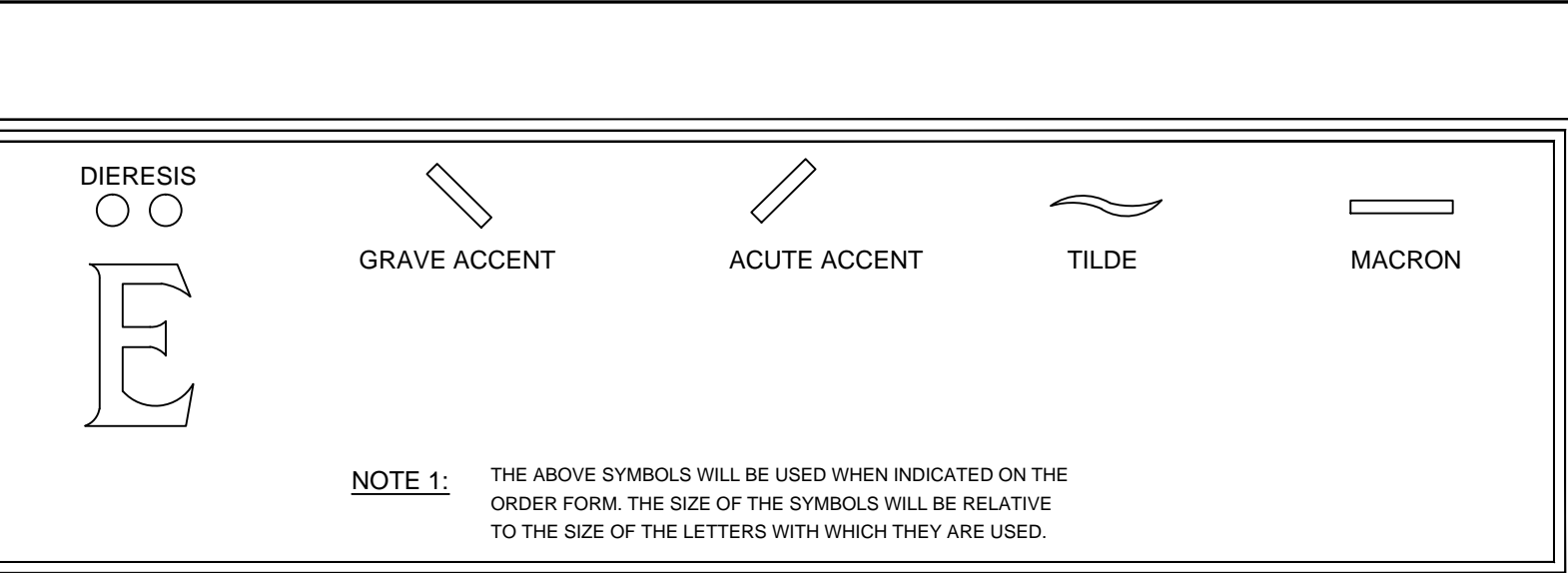
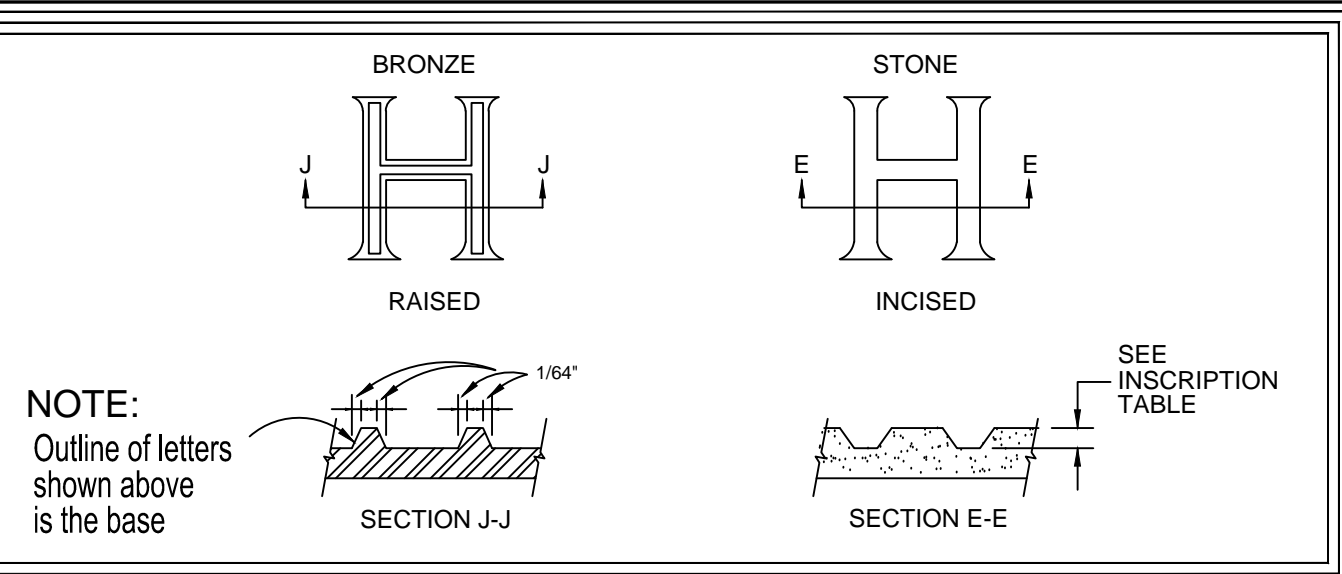


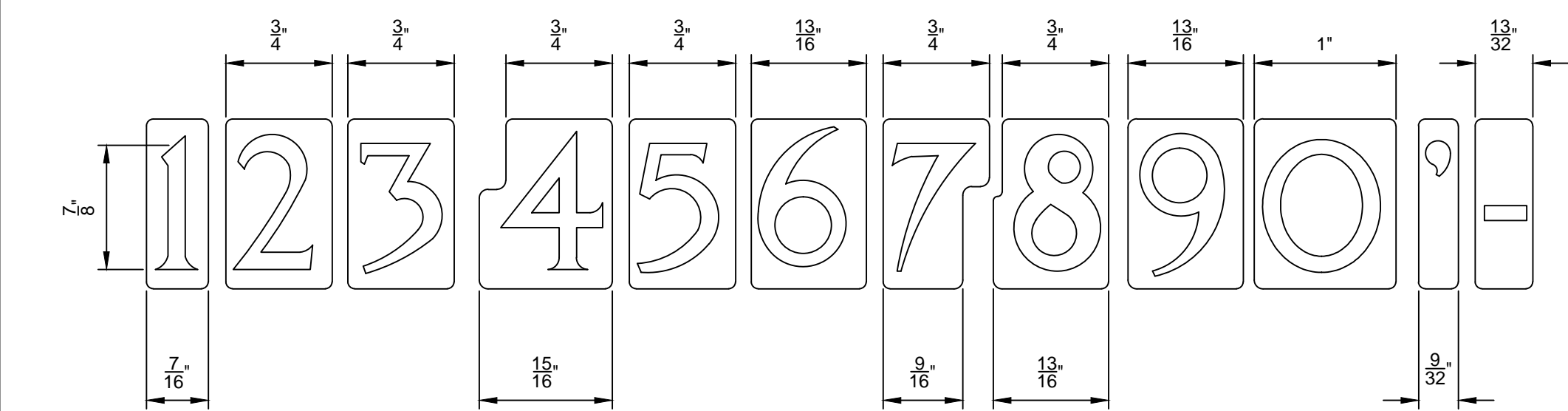
DRAWING LOCATION	MARKER TYPE	ITEM NAME AND LETTER HEIGHT								EMBLEM
		L1	L2	L3	L4	L5	L6	L7		
		1 1/8"	1"	7/8"	3/4"	7/16"	3/8"	5/8"	2" OR 3"	
DEPTH BY MARKER TYPE										
A-B1	B1	N/A	3/32"	N/A	3/32"	N/A	N/A	N/A	N/A	3/32"
A-F-1	F1	7/32" - 9/32"	N/A	6/32" - 7/32"	6/32" - 7/32"	N/A	N/A	N/A	N/A	7/32" - 9/32"
A-G1/J1/L1	G1/J1/L1	7/32" - 9/32"	N/A	6/32" - 7/32"	6/32" - 7/32"	N/A	N/A	N/A	N/A	7/32" - 9/32"
A-MW-1/2/3	A1/C1	N/A	N/A	N/A	N/A	4/32" - 5/32"	N/A	4/32" - 5/32"	4/32" - 5/32"	
A-NCIS-1/2	E1/H1/I1	5/32" - 7/32"	4/32" - 6/32"	4/32" - 6/32"	4/32" - 6/32"	N/A	N/A	N/A	N/A	5/32" - 7/32"
A-U1-1/2	U1	7/32" - 9/32"	N/A	6/32" - 7/32"	6/32" - 7/32"	N/A	N/A	N/A	N/A	7/32" - 9/32"
A-V1/W1	V1/W1	7/32" - 9/32"	N/A	6/32" - 7/32"	6/32" - 7/32"	N/A	N/A	N/A	N/A	7/32" - 9/32"
A-XA/XB/XC	XA/XB/XC	N/A	3/16" RAISED AND INSCRIBED	N/A	N/A	N/A	N/A	N/A	N/A	
A-YA	YA	N/A	3/16" RAISED AND INSCRIBED	N/A	N/A	N/A	N/A	N/A	N/A	
A-Z1	Z1	N/A	N/A	N/A	N/A	3/32"	3/32"	N/A	N/A	3/32"

DEPTH BY TYPE

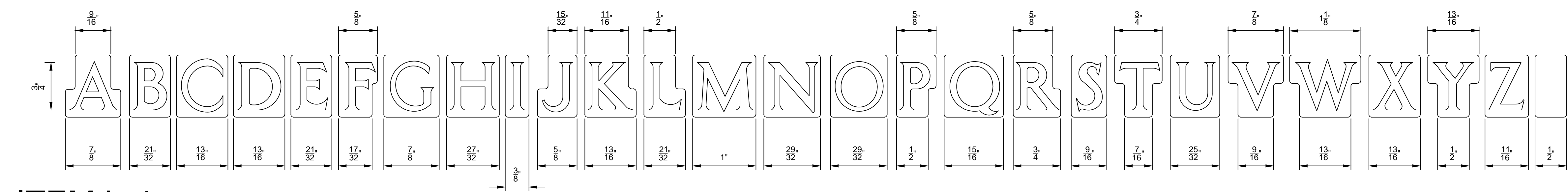
NOTE: AS OF OCTOBER 1, 2013 THE DEPTHS SURROUNDED BY BOLD BORDERS SUPERCEDE DEPTHS WHICH WERE PREVIOUSLY SPECIFIED AND MUST BE FOLLOWED IN LIEU OF DEPTHS SHOWN IN DRAWINGS RELATED TO SPECIFIC MONUMENT TYPES.



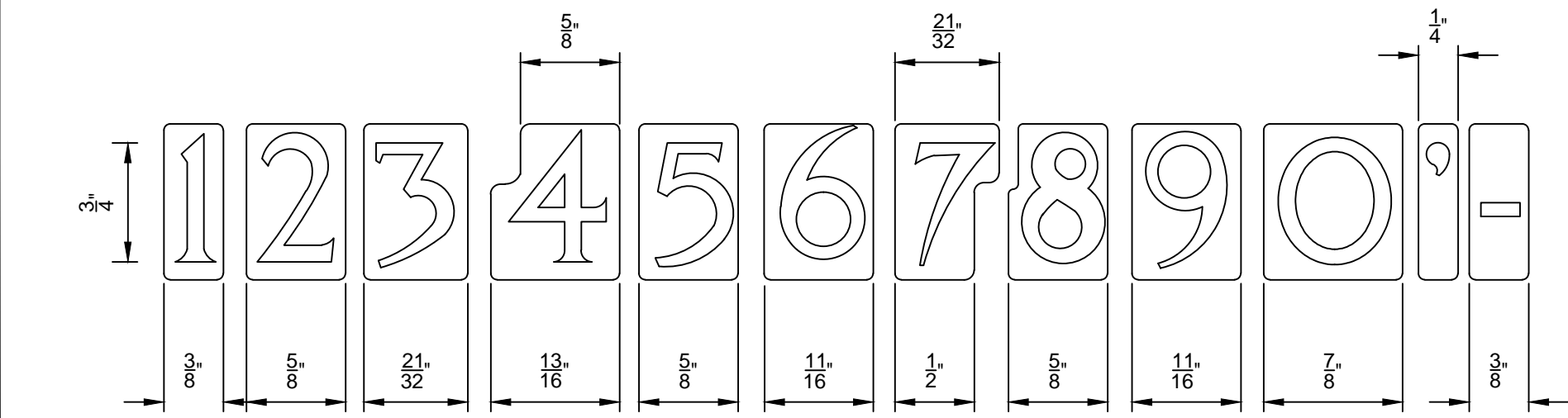
ITEM L-3




ITEM L-3 CONTINUED



ITEM L-4



B	ADDED L5 & L6 & L7 FONTS, UPDATED INSCRIPTION TABLE	11/26/13	<div>GENERAL NOTES</div> <div>1. FOR MARBLE AND GRANITE NICHE COVERS: SMALL CAPITAL LETTERS WILL BE USED IN THE FOLLOWING MANNER: FOR "C" IN MACDONALD, "AC" IN MACDONALD, "R" IN JR, "D" IN 2D LIEUTENANT, "ST" IN 1ST LIEUTENANT, ETC. THEY WILL HAVE THE SAME DEPTH OR RISE AS THE LARGE LETTERS. THE SIZE OF THE LETTERING WILL BE ITEM L-3 WHEN USED WITH ITEM L-1 AND ITEM L-4 WHEN USED WITH ITEM L-3.</div> <div>2. UPON WRITTEN APPROVAL OF THE COTR, SLIGHT REVISIONS MAY BE MADE TO L-3 AND L-4 LETTERS USED ON STONE NICHE COVERS WHICH ENLARGE THE CENTER AREAS OF LETTERS / NUMERALS TO PREVENT BLOWN LETTERING. REVISIONS ARE NOT TO CHANGE THE OVERALL SIZE, STYLE OR APPEARANCE OF LETTERING.</div>	<div><div>10</div><div>1</div><div>2</div><div>3</div><div>4</div></div> <div>1" = 1" GRAPHIC SCALE</div>	<div><div>NATIONAL CEMETERY ADMINISTRATION</div></div>	<div>Drawing Title</div> LETTERS, FONTS, NUMBERS & OTHER CHARACTERS	<div>Project Title</div> GOVERNMENT HEADSTONES, MARKERS, AND NICHE COVERS	<div>Date</div> NOVEMBER 26, 2013				
	A	MOVED INCISED DETAILS TO SHT 2, DELETED EMBLEM 50, ADDED ACCENT MARKS & CHARACTERS				03-01-07	<div>Approved: Director, Memorial Programs Service</div> <div>Signed</div>	<div>Marker Type</div> REFER TO DEPTH CHART	<div>Checked</div> KEE/KS	<div>Drawn</div> MLT	<div>Systems</div>	<div>DRAWING NO.</div> A-LFN&OC-2
		-				SUPERSEDES DRAWING ID-4 DATED 12-2-99	06/05/03	<div>Approved: Chief of Operations, Memorial Programs Service</div> <div>Signed</div>	<div>Location</div> -	<div>Digital File</div> A-LFN&OC-2.DWG 24" x 36" SHEET	<div>Sheet</div> 2	<div>Of</div> 3
Revisions		Date										