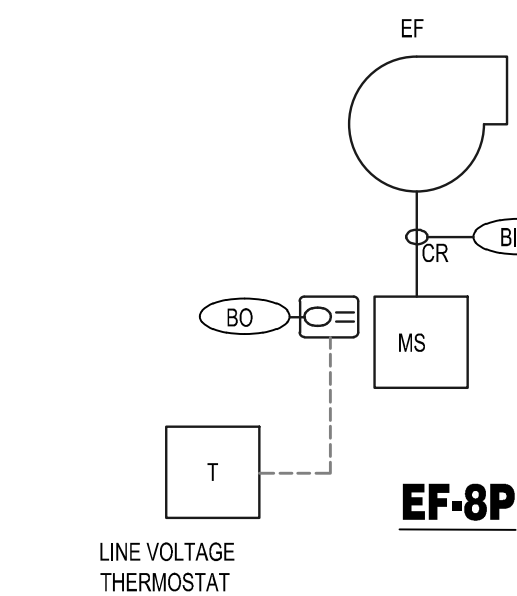
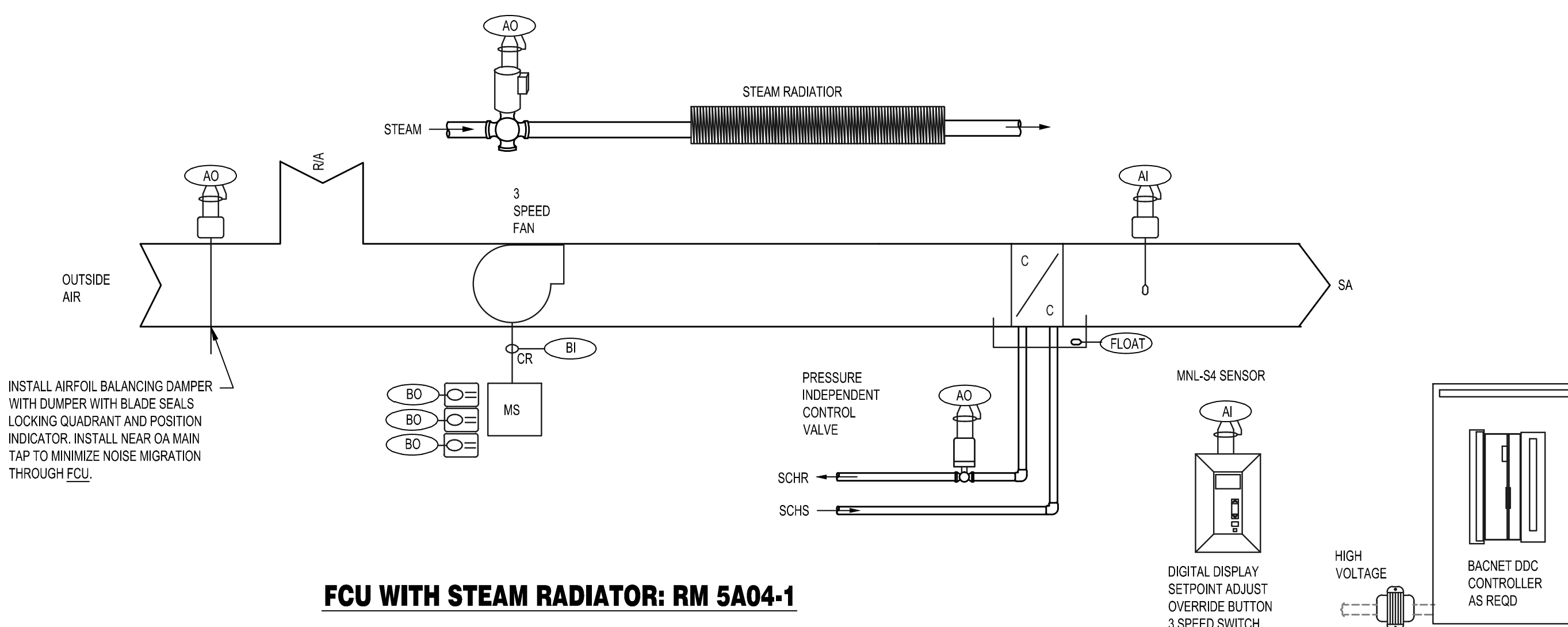
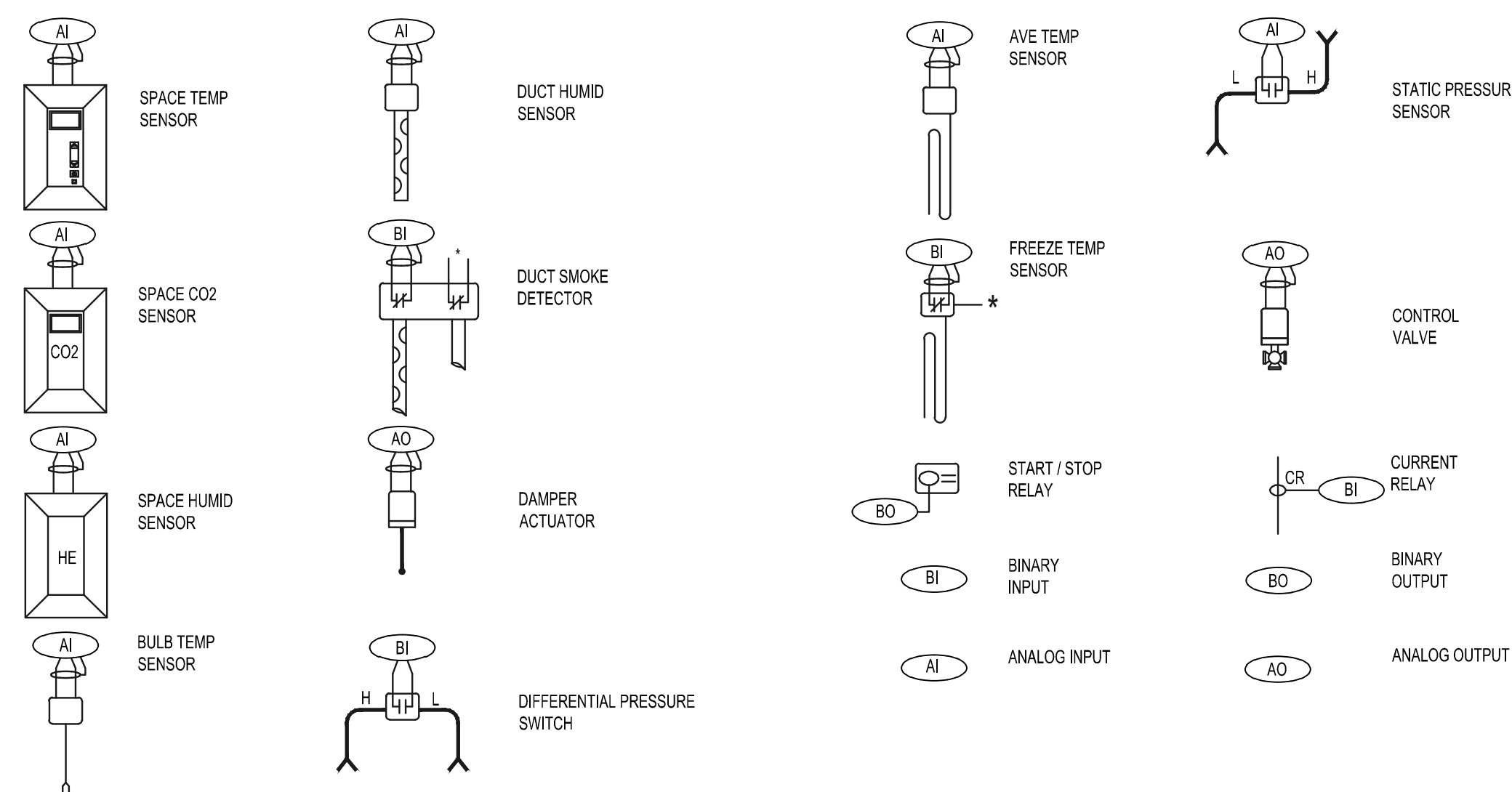


- FAN COIL UNIT (FCU) SEQUENCE OF OPERATION**
- GENERAL:**
1. THE SUPPLY FAN SHALL BE STARTED AND STOPPED BY THE DDC SYSTEM VIA AN ADJUSTABLE TIME SCHEDULE, MANUAL BUTTON ON GRAPHIC SCREEN OR BY THE H-O-A SWITCH. WHEN THE UNIT IS OFF THE CHILLED WATER AND HEAT VALVES SHALL CLOSE AND THE FAN SHALL STOP.
 2. THE SPACE TEMPERATURE SENSOR SHALL HAVE A 3 SPEED FAN SWITCH. THE ROOM OCCUPANT CAN SELECT FROM 3 FAN SPEEDS.
 3. A COOLING DRAIN PAN SWITCH SHALL DISABLE THE UNIT AND ALARM THE BMS.
 4. THE AUDIOLOGY UNIT SHALL HAVE A BUTTON TO TEMPORARILY DISABLE THE FAN DURING TESTING. PRESSING THE BUTTON FOR SECOND TIME WILL RETURN THE UNIT TO NORMAL OPERATION.
 5. PROVIDE VALVE POSITION FOR ALL COOLING AND HEATING VALVES AT THE OPERATORS WORKSTATION GRAPHIC SCREEN.
- TEMPERATURE CONTROL:**
1. THE TEMPERATURE SETPOINT SHALL BE ADJUSTABLE WITHIN LIMITS ESTABLISHED BY THE BMS COMPUTER. THE CHILLED WATER VALVE AND HEATING VALVE (UNIT MOUNTED OR REMOTE) SHALL MODULATE IN SEQUENCE TO MAINTAIN THE ROOM SETPOINT.



LEGEND

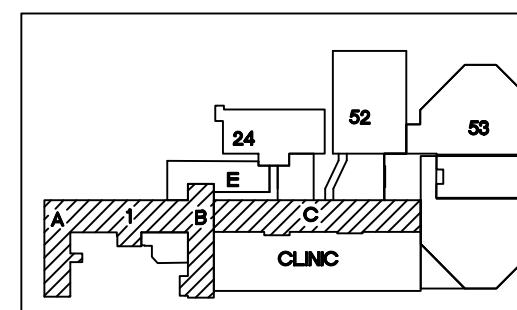


NOTES:
INTERLOCK OUTSIDE AIR DAMPER WITH FAN MOTOR. WHEN OVERRIDE IS ACTIVE, STEAM AND CHILLED WATER VALVES CLOSE. FAN STOPS AND OA DAMPER CLOSSES.

The seal appearing on this document was authorized by Robert M. Danner, 200703 on 03/03/13. It is intended for use in documents prepared by or on behalf of the Oklahoma Engineering Practice Act.



5/28/2013



KEY PLAN
SCALE: NO SCALE
PROJECT NORTH

REVISIONS	DESCRIPTION	DATE



Dept. of Veterans Affairs
Jack C. Montgomery
Medical Center
1011 Honor Heights Drive
Muskogee, Oklahoma 74401

ENGINEER:

RMD CONSULTING, LLC
2815 VALLEY VIEW LANE, STE. 214
DALLAS, TX 75234
P: 972-488-8077 F: 972-488-8174
PROJECT NUMBER: 11-5801
OK REG. ENGINEERING FIRM: 5183

CONSULTANTS:

ARCHITECT:
ARCHITECTURAL CONCEPTS, INC.
669 AIRPORT FREEWAY, STE. 300
HURST, TX 76053
P: 817-285-8885 F: 817-285-8021

APPROVED:

APPROVED:	APPROVED: Interior Designer	APPROVED: Safety Manager	APPROVED: Medical Center Director
APPROVED:	APPROVED:	APPROVED: Infection Control Nurse	APPROVED: Associate Director
APPROVED:	APPROVED:	APPROVED: Industrial Hygienist	APPROVED: Chief of Staff
APPROVED:	APPROVED:	APPROVED: President A.P.C.E. 2250	APPROVED: Chief of Engineering Service

DRAWING TITLE

HVAC CONTROLS

PROJECT NO. 623-10-104 CONTRACT NO. VA256-P-1355

BUILDING NO. 01 AUTOCAD FILE NAME:

LOCATION Jack C. Montgomery VA Medical Center

PROJECT TITLE

REPLACE INDUCTION
UNITS IN BLDG. #1

DESIGNED BY: DRAWN BY: CHECKED BY:

DRAWING NO. 1-MH10.1

DWG. 52 OF 97

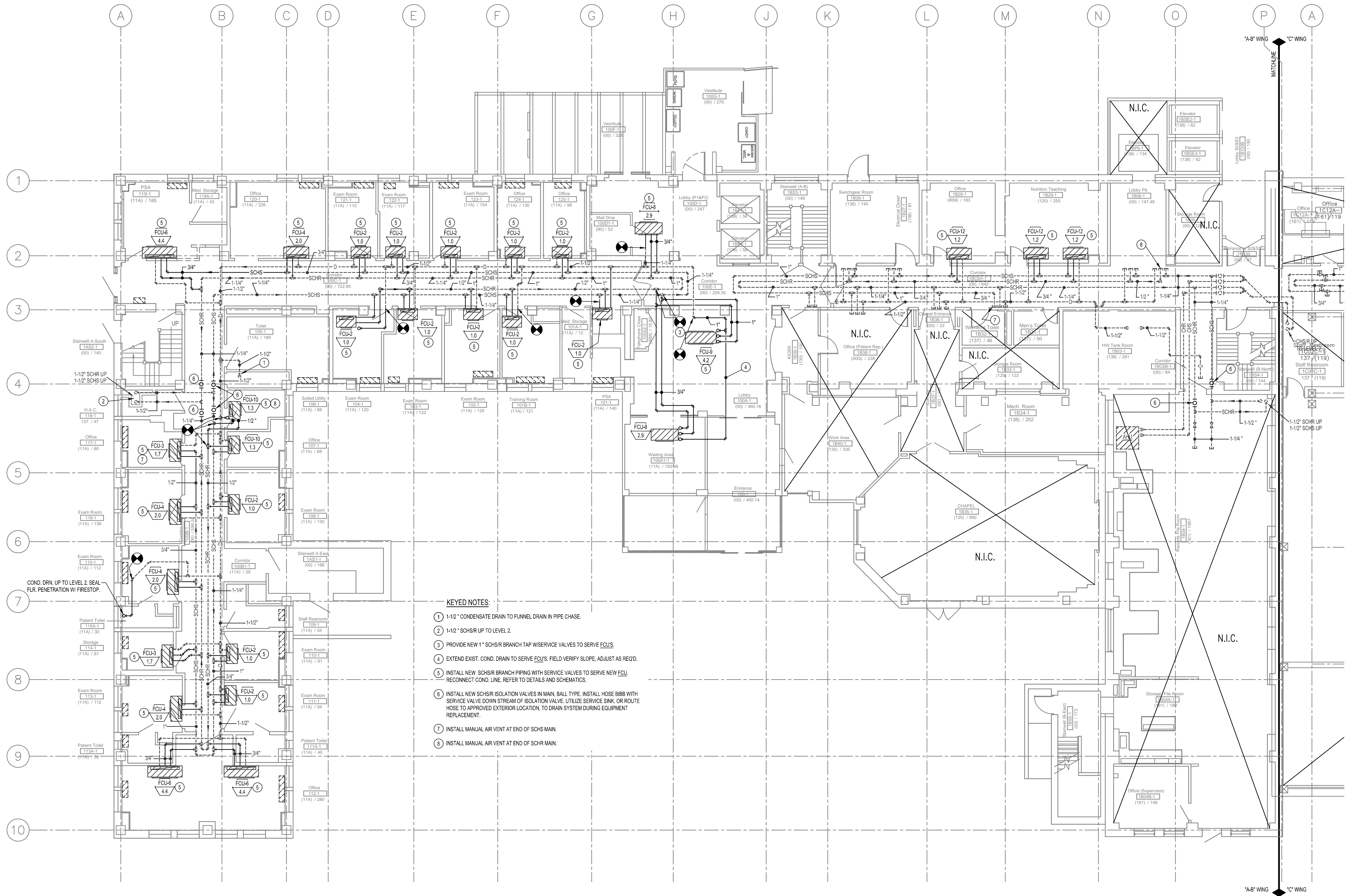
DATE

5/28/2013

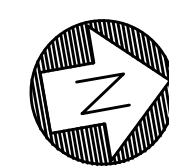
SCALE: AS NOTED

DWG. 52 OF 97

DEPARTMENT OF
VETERANS AFFAIRS

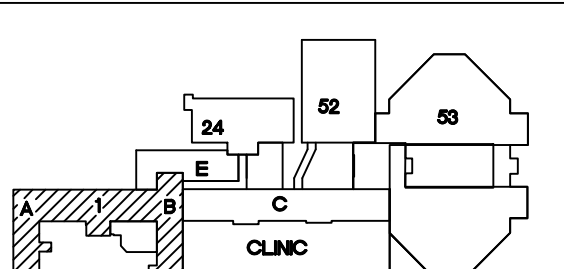
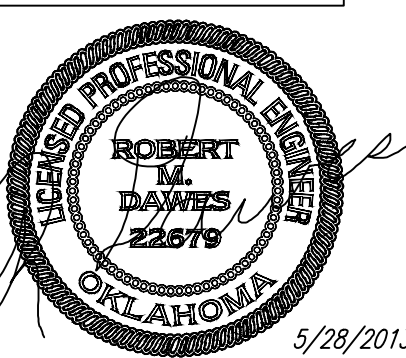


- KEYED NOTES:
- 1-1/2" CONDENSATE DRAIN TO FUNNEL DRAIN IN PIPE CHASE.
 - 1-1/2" SCHSR UP TO LEVEL 2.
 - PROVIDE NEW 1" SCHSR BRANCH TAP W/SERVICE VALVES TO SERVE FOU'S.
 - EXTEND EXIST. COND. DRAIN TO SERVE FOU'S. FIELD VERIFY SLOPE, ADJUST AS REQ'D.
 - INSTALL NEW SCHSR BRANCH PIPING WITH SERVICE VALVES TO SERVE NEW FOU. RECONNECT COND. LINE. REFER TO DETAILS AND SCHEMATICS.
 - INSTALL NEW SCHSR ISOLATION VALVES IN MAIN. BALL TYPE. INSTALL HOSE BIBB WITH SERVICE VALVE DOWN STREAM OF ISOLATION VALVE. UTILIZE SERVICE SINK. OR ROUTE HOSE TO APPROVED EXTERIOR LOCATION. TO DRAIN SYSTEM DURING EQUIPMENT REPLACEMENT.
 - INSTALL MANUAL AIR VENT AT END OF SCHS MAIN.
 - INSTALL MANUAL AIR VENT AT END OF SCHR MAIN.



1 LEVEL 1, A-B WING: HVAC CW PIPING PLAN
1/8"=1'-0"

This seal appearing on this document was
authorized by Robert M. Dawns, 20878 on
05/28/2013. Alteration of a sealed document
without proper notation to the responsible
engineer is an offense under the
Oklahoma Engineering Practice Act.



KEY PLAN
SCALE: NO SCALE
PROJECT NORTH

ASBESTOS NOTE:
IF THE EXECUTION OF THIS WORK REQUIRES THE DISTURBING OF ANY SUBSTANCE WHICH APPEARS TO BE ASBESTOS OR WHICH MAY CONTAIN ASBESTOS FIBER, NOTIFY THE OWNER BEFORE CONTINUING WORK AT THE SUSPECT LOCATION. ANY MATERIAL TESTING POSITIVE SHALL BE REMOVED BY THE OWNER BEFORE WORK CONTINUES.

NOTE: EXISTING CONDITIONS SHOWN WERE DERIVED FROM OWNER FURNISHED DRAWINGS AND FIELD OBSERVATIONS. SOME BUILDING FEATURES AND MEP SYSTEMS ARE NOT SHOWN FOR CLARITY. FIELD VERIFY BUILDING CONSTRUCTION. FIELD VERIFY THE LOCATION, SIZE AND QUANTITY OF ALL EQUIPMENT.

NOTE: REFER TO DETAILS AND SCHEMATICS FOR PIPING, VALVES, FITTINGS AND OTHER APPURTENANCES REQUIRED, BUT NOT SHOWN FOR CLARITY.

REVISIONS	DESCRIPTION	DATE



Dept. of Veterans Affairs
Jack C. Montgomery
Medical Center
1011 Honor Heights Drive
Muskogee, Oklahoma 74401

ENGINEER:

RMD CONSULTING, LLC
2815 VALLEY VIEW LANE, STE. 214
DALLAS, TX 75234
P: 972-488-8077 F: 972-488-8174
PROJECT NUMBER: 11-5801
OK REG. ENGINEERING FIRM: 5183

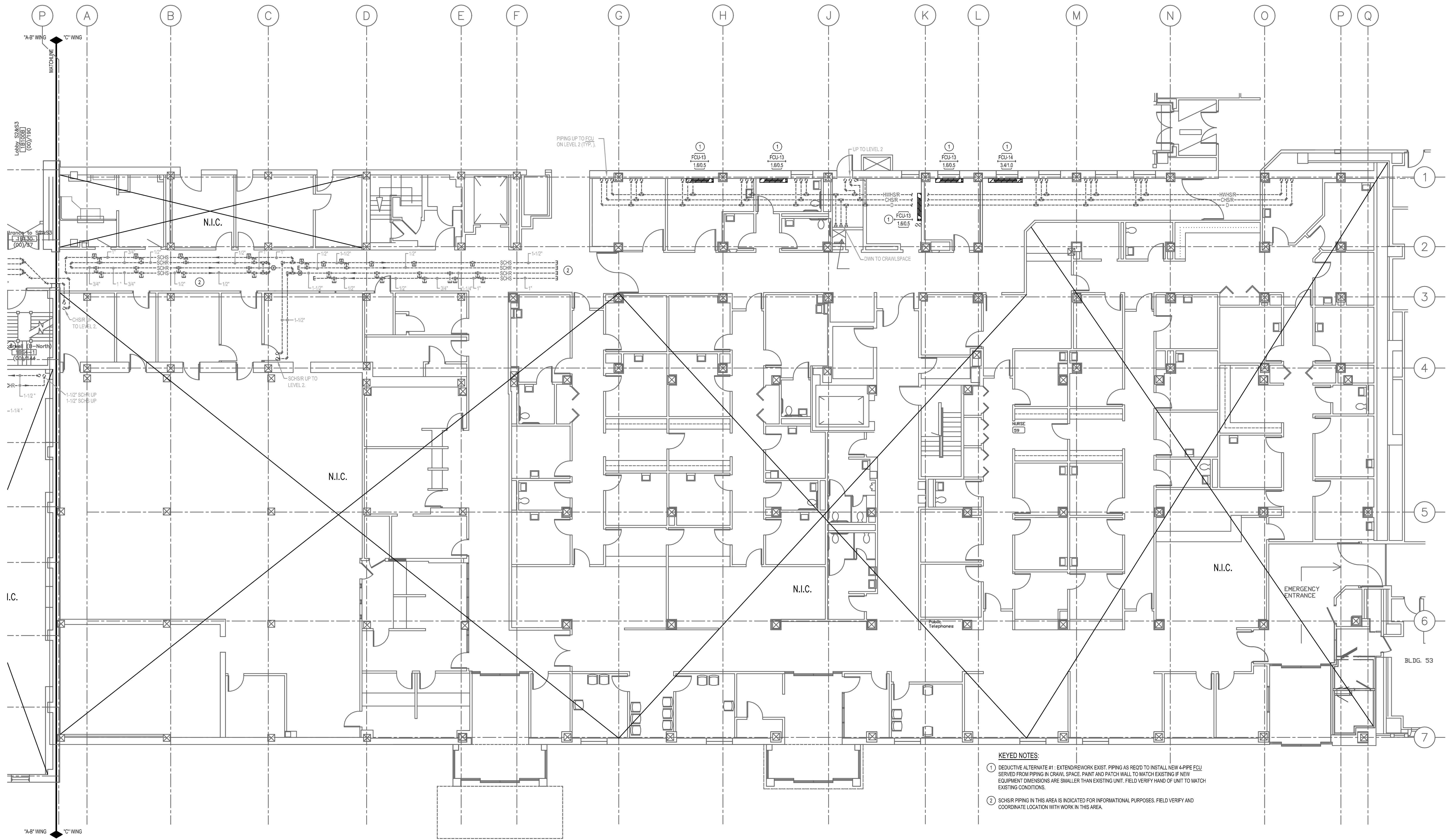
CONSULTANTS:

ARCHITECT:
ARCHITECTURAL CONCEPTS, INC.
669 AIRPORT FREEWAY, STE. 300
HURST, TX 76053
P: 817-285-8885 F: 817-285-8021

APPROVED:	APPROVED: Interior Designer	APPROVED: Safety Manager	APPROVED: Medical Center Director
APPROVED:	APPROVED:	APPROVED: Infection Control Nurse	APPROVED: Associate Director
APPROVED:	APPROVED:	APPROVED: Industrial Hygienist	APPROVED: Chief of Staff
APPROVED:	APPROVED:	APPROVED: President A.F.G.E. 2250	APPROVED: Chief of Engineering Service

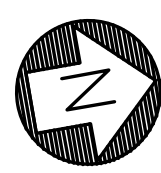
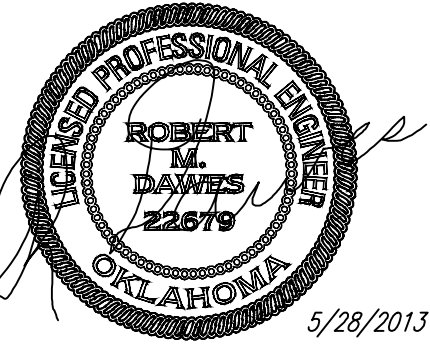
DRAWING TITLE	PROJECT TITLE	DATE
LEVEL 1, A-B WING: HVAC CW PIPING PLAN	REPLACE INDUCTION UNITS IN BLDG. #1	5/28/2013
PROJECT NO.	DESIGNED BY:	SCALE:
623-10-104	DRAWN BY:	AS NOTED
BUILDING NO.	CHECKED BY:	DRAWING NO.
01	LOCATION	1-MP1.0
	Jack C. Montgomery VA Medical Center	DWG. 53 OF 97

DEPARTMENT OF
VETERANS AFFAIRS



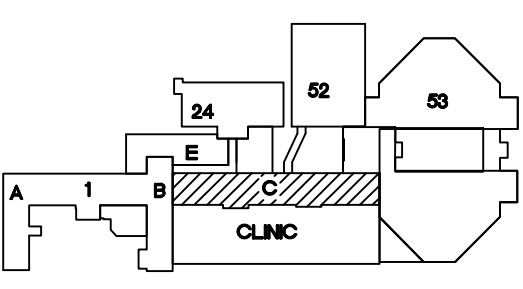
KEYED NOTES:
① DEDUCTIVE ALTERNATE #1 - EXTENDING WORK EXIST. PIPING AS REQ'D TO INSTALL NEW 4" PIPE FCU SERVED FROM PIPING IN CRAWL SPACE. PAINT AND PATCH WALL TO MATCH EXISTING IF NEW EQUIPMENT DIMENSIONS ARE SMALLER THAN EXISTING UNIT. FIELD VERIFY HAND OF UNIT TO MATCH EXISTING CONDITIONS.
② SCHSR PIPING IN THIS AREA IS INDICATED FOR INFORMATIONAL PURPOSES. FIELD VERIFY AND COORDINATE LOCATION WITH WORK IN THIS AREA.

This seal according to this document was authorized by Robert M. Dawkins, 20075 on 05/28/2013. Alteration of a sealed document without proper notation to the responsible engineer is an offense under the Oklahoma Engineering Practice Act.



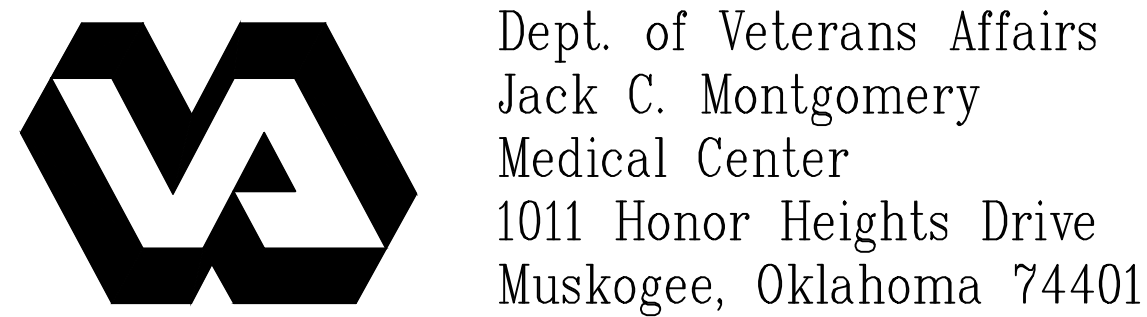
1 LEVEL 1, C WING: HVAC PIPING PLAN
1/8"=1'-0"

ASBESTOS NOTE:
IF THE EXECUTION OF THIS WORK REQUIRES THE DISTURBING OF ANY SUBSTANCE WHICH APPEARS TO BE ASBESTOS OR WHICH MAY CONTAIN ASBESTOS FIBER, NOTIFY THE OWNER BEFORE CONTINUING WORK AT THE SUSPECT LOCATION. ANY MATERIAL TESTING POSITIVE SHALL BE REMOVED BY THE OWNER BEFORE WORK CONTINUES.
NOTE: EXISTING CONDITIONS SHOWN WERE DERIVED FROM OWNER FURNISHED DRAWINGS AND FIELD OBSERVATIONS. SOME BUILDING FEATURES AND MEP SYSTEMS ARE NOT SHOWN FOR CLARITY. FIELD VERIFY BUILDING CONSTRUCTION. FIELD VERIFY THE LOCATION, SIZE AND QUANTITY OF ALL EQUIPMENT.
NOTE: REFER TO DETAILS AND SCHEMATICS FOR PIPING, VALVES, FITTINGS AND OTHER APPURTENANCES REQUIRED, BUT NOT SHOWN FOR CLARITY.



KEY PLAN
SCALE: NO SCALE
PROJECT NORTH

REVISIONS	DESCRIPTION	DATE



Dept. of Veterans Affairs
Jack C. Montgomery
Medical Center
1011 Honor Heights Drive
Muskogee, Oklahoma 74401

ENGINEER:
RMD CONSULTING, LLC
2815 VALLEY VIEW LANE, STE. 214
DALLAS, TX 75234
P: 972-488-8077 F: 972-488-8174
PROJECT NUMBER: 11-5801
OK REG. ENGINEERING FIRM: 5183

CONSULTANTS:
ARCHITECT:
ARCHITECTURAL CONCEPTS, INC.
669 AIRPORT FREEWAY, STE. 300
HURST, TX 76053
P: 817-285-8885 F: 817-285-8021

APPROVED:	APPROVED: Interior Designer	APPROVED: Safety Manager	APPROVED: Medical Center Director
APPROVED:	APPROVED:	APPROVED: Infection Control Nurse	APPROVED: Associate Director
APPROVED:	APPROVED:	APPROVED: Industrial Hygienist	APPROVED: Chief of Staff
APPROVED:	APPROVED:	APPROVED: President A.F.C.E. 2250	APPROVED: Chief of Engineering Service

DRAWING TITLE LEVEL 1, C WING: HVAC PIPING PLAN		PROJECT TITLE REPLACE INDUCTION UNITS IN BLDG. #1	
PROJECT NO. 623-10-104	CONTRACT NO. VA256-P-1355	DESIGNED BY:	DRAWN BY:
BUILDING NO. 01	AUTOCAD FILE NAME:	CHECKED BY:	DATE 5/28/2013
LOCATION Jack C. Montgomery VA Medical Center		SCALE: AS NOTED	

DRAWING NO. 1-MP1.1 DWG. 54 OF 97	DEPARTMENT OF VETERANS AFFAIRS
--	-----------------------------------