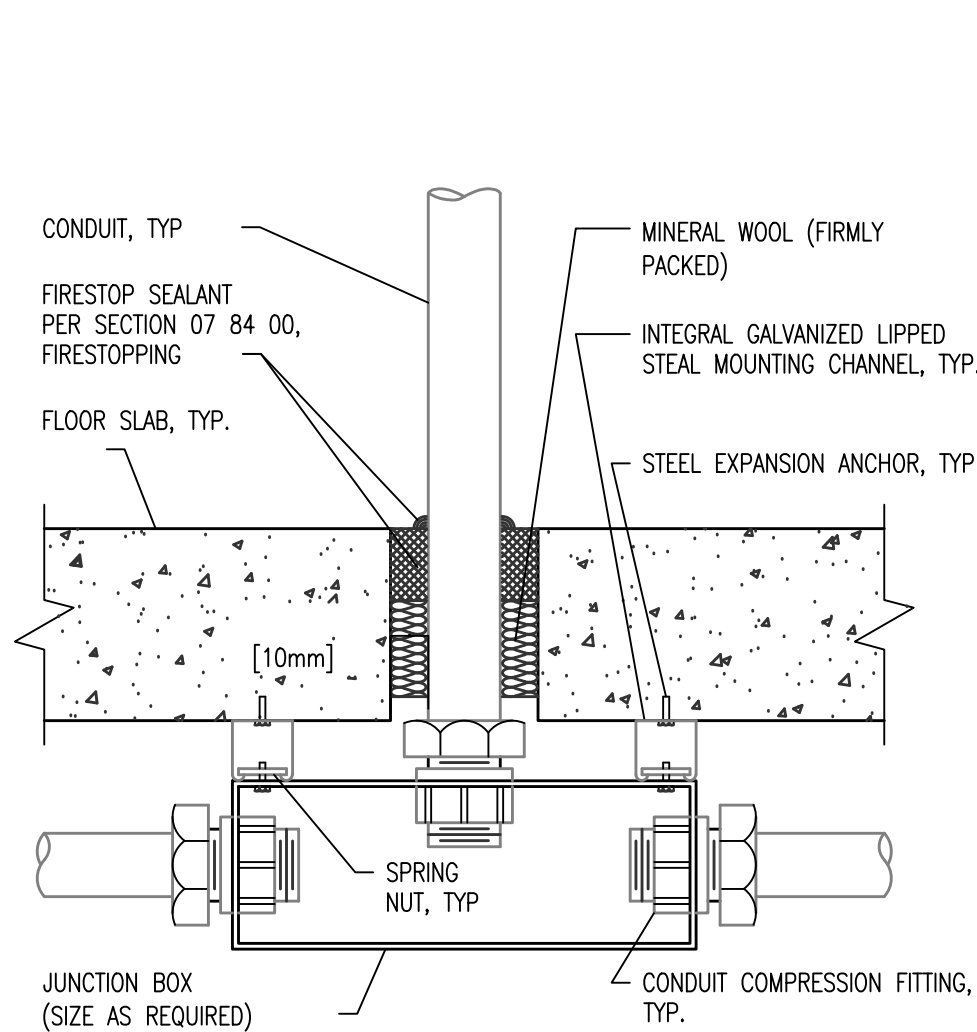


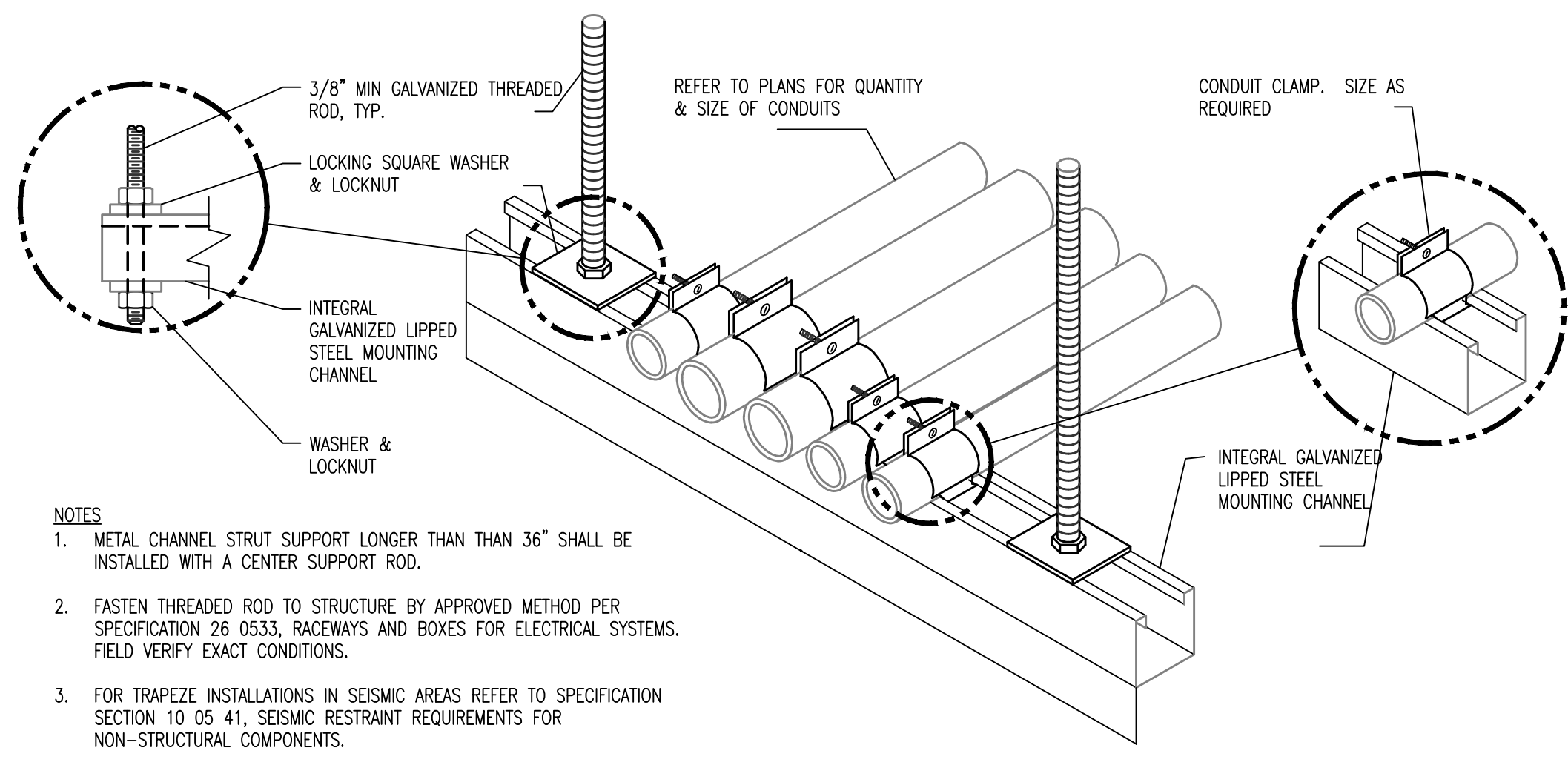
1 ELECTRICAL RISER DIAGRAM  
SCALE NONE

EXISTING MOTOR CONTROL CENTER "MCC2"												
DESIGNATION		MCC2	VOLTAGE		480Y/277, 3Ø, 3W		TYPE		MCC		ENCLOSURE	NEMA 1
MAINS		600 AMP M.L.O.	HORIZONTAL BUS		600A		VERTICAL BUS		600A (SEC.1)		GROUND BUS	FULL LENGTH
INTERRUPTING RATING		65,000 AIC		CONTROLS		AS NOTED		300A (ALL OTHERS)		WIRING CLASS		
LOCATION		INTERSTITIAL EQUIPMENT ROOM 3C01-1		MANUFACTURER		WESTINGHOUSE		MODEL				
(SECT. 4 IS NEWER CUTLER HAMMER)												
SECT. NO.	CIRC./CUBICLE NO.	EQUIPMENT DESIGNATION	HP	KVA	RLA	NO. OF POLES	COMB. STARTER NEMA SIZE	OVERCURRENT PROTECTION		CONTROL VOLTAGE	NOTES	
								FRAME	C.B.			
1	1	"1-CP2" DUPLEX (STEAM PUMP / COND. PUMP)	(2) 1	-	1.4	3	1	-	15	-		
1	2	SUPPLY FAN "1-SF2"	3	-	4.8	3	1	-	15	-		
1	3	RETURN FAN "1-RF2"	2	-	3.4	3	1	-	15	-		
1	4	SUPPLY FAN "1-SF4"	5	-	7.6	3	1	-	15	-		
1	5	RETURN FAN "1-RF4"	2	-	3.4	3	1	-	15	-		
1	6	SPACE										
2	7	PUMP "1-P1"	2	-	3.4	3	1	-	15	-		
2	8	CONTROLS AIR COMPRESSOR	-	-	-	3	NONE	-	40	-		
2	9	BACK-UP H.W. PUMP	-	-	-	3	-	-	-	-		
2	10	SUPPLY FAN "1-SF3"	15	-	21	3	1	-	40	-		
2	11	RETURN FAN "1-RF3"	5	-	7.6	3	1	-	15	-		
2	12	RETURN FAN "1-RF7" (AHU-7)	5	-	7.6	3	1	-	15	-		
3	13	SUPPLY FAN "1-SF7" (AHU-7)	15	-	21	3	1	-	40	-		
3	14	SUPPLY FAN "1-SF6" (AHU-6)	7.5	-	11	3	1	-	20	-		
3	15	RETURN FAN "1-RF6" (AHU-6)	2	-	3.4	3	1	-	15	-		
3	16	SUPPLY FAN "1-SF5" (AHU-5)- SPARE	7.5	-	11	3	1	-	20	-		
3	17	RETURN FAN "1-RF5" (AHU-5)- NEW "1-EF5A"	5	-	7.6	3	1	-	15	-		
3	18	PUMP "1-P2"	3/4	-	1.4	3	1	-	15	-		
4	19	"AHU-2B1" (NUC. MED.)	-	-	-	3	-	-	-	-		
4	20	"AHU-2B1" (NUC. MED.)	-	-	-	3	-	-	-	-		
4	21	TRANSFORMER SERVING "MC-2"	-	-	31.3	2	NONE	-	40	-		
4	22	NEW "AHU-5"	-	-	26.3	3	NONE	100	35	-	WIRE & CONDUIT AS INDICATED ON POWER PLAN	
4	23	15KVA TRANSFORMER	--	--	--	--	--	--	--	--	TRANSFORMER MTD IN MCC ENCLOSURE	
5	24	EXHAUST FAN 2 (CLINICAL 'C' WING)	-	-	-	3	-	-	-	-		
5	25	SPARE	-	-	-	3	1	30A/60A FUSIBLE SWITCH	-	-		
5	26	SPARE	-	-	-	3	1	-	30	-		
5	27	NEW "HRU-5"	-	-	44.1	3	NONE	-	50	-	WIRE & CONDUIT AS INDICATED ON POWER PLAN	
5	28	SPACE	-	-	-	3	-	-	-	-		

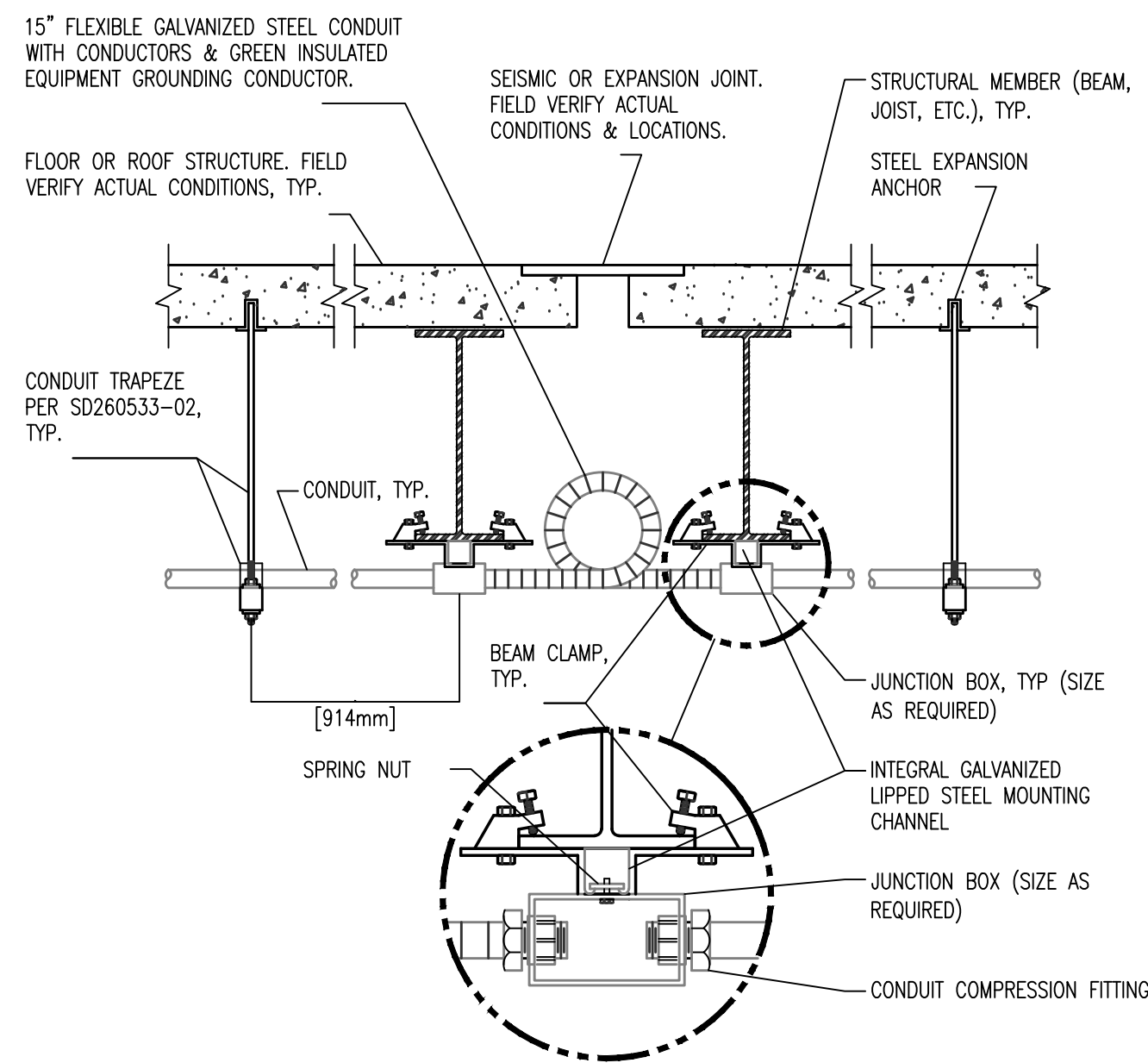
- "MCC2" SCHEDULE KEYED NOTES:**
- EXISTING STARTER/OCPP NO LONGER USED - RE-LABEL THIS MCC BUCKET AS "SPARE".
  - FURNISH & INSTALL NEW OCPD DEVICE IN AVAILABLE SPACE AS INDICATED TO SERVE NEW "AHU-5" AS INDICATED. RE-LABEL MCC BUCKET "AHU-5". THIS NEW CIRCUIT BREAKER SHALL BE CUTLER HAMMER AND SHALL BE THE SAME TYPE AND HAVE THE SAME INTERRUPTING RATING AS SIMILAR EXISTING CIRCUIT BREAKERS ALREADY INSTALLED IN THIS SECTION OF THIS EXISTING MOTOR CONTROL CENTER.
  - UTILIZE EXISTING 50A/3P SPARE CIRCUIT BREAKER TO SERVE NEW "HRU-5" AS INDICATED. RE-LABEL MCC BUCKET "HRU-5".
  - CONNECT NEW "1-EFSA" TO EXISTING 15A/3P CIRCUIT BREAKER - STARTER IS NOT NEEDED - BYPASS STARTER AS REQUIRED. RE-LABEL MCC BUCKET "1-EFSA".



2 FLOOR SLAB PENETRATION DETAIL  
SCALE NONE



3 CONDUIT TRAPEZE MOUNTING DETAIL  
SCALE NONE



4 CONDUIT JOINT CROSSING DETAIL  
SCALE NONE

REVISIONS	DESCRIPTION	DATE



Dept. of Veterans Affairs  
Jack C. Montgomery  
Medical Center  
1011 Honor Height Drive  
Muskogee, Oklahoma 74401

**ENGINEER:**

RMD CONSULTING, LLC  
2815 VALLEY VIEW LANE, STE. 214  
DALLAS, TX 75234  
P: 972-488-8077 F: 972-488-8174  
OK REG. ENGINEERING FIRM: 5183

**CONSULTANTS:**

ARCHITECT:  
ARCHITECTURAL CONCEPTS, INC.  
669 AIRPORT FREEWAY, STE. 300  
HURST, TX 76053  
P: 817-285-8885 F: 817-285-8021

APPROVED:	APPROVED: Interior Designer
APPROVED:	APPROVED:
APPROVED:	APPROVED:
APPROVED:	APPROVED:

APPROVED: Safety Manager
APPROVED: Infection Control Nurse
APPROVED: Industrial Hygienist
APPROVED: President A.F.G.E. 2250

APPROVED: Medical Center Director
APPROVED: Associate Director
APPROVED: Chief of Staff
APPROVED: Chief of Engineering Service

DRAWING TITLE
PARTIAL ELECTRICAL RISER DIAGRAM, DETAILS, & SCHEDULES
PROJECT NO.
623-11-107
CONTRACT NO.
VA256-12-C-0295
BUILDING NO.
CLINICAL

DESIGNED BY:
TGB
DRAWN BY:
TGB
CHECKED BY:
SRC

DATE
8/19/2013
SCALE
AS SHOWN
DRAWING NO.
EP4.0
DWG. 35 OF 40

PROJECT TITLE
REPLACE LABORATORY AIR HANDLING UNITS
LOCATION
Jack C. Montgomery VA Medical Center

The seal appearing on this document was  
authorized by Stanley H. Curtis, 20189 on  
08/19/2013. Attention: If a sealed document  
without proper notification to the responsible  
engineer is reproduced under the  
Oklahoma Engineering Practice Act.



DEPARTMENT OF  
VETERANS AFFAIRS