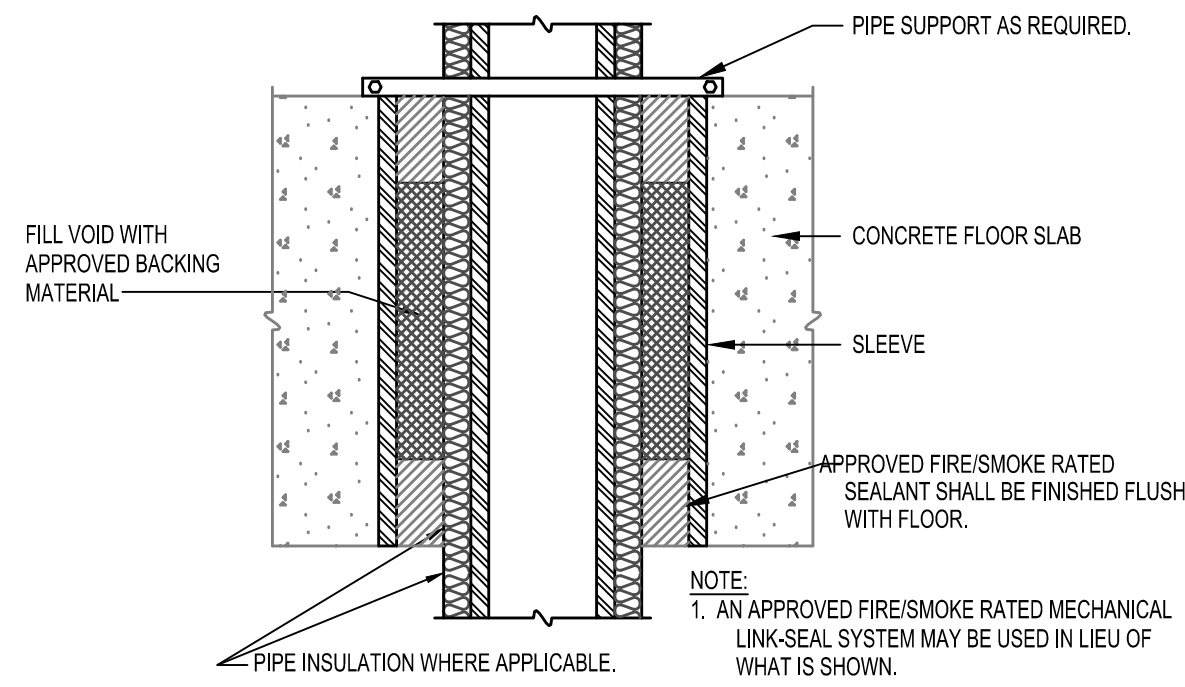
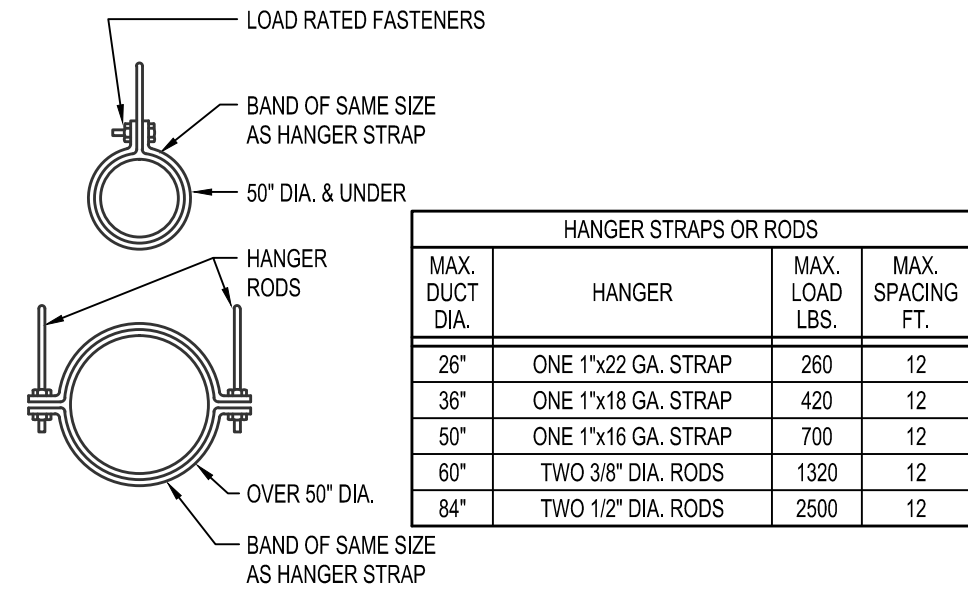


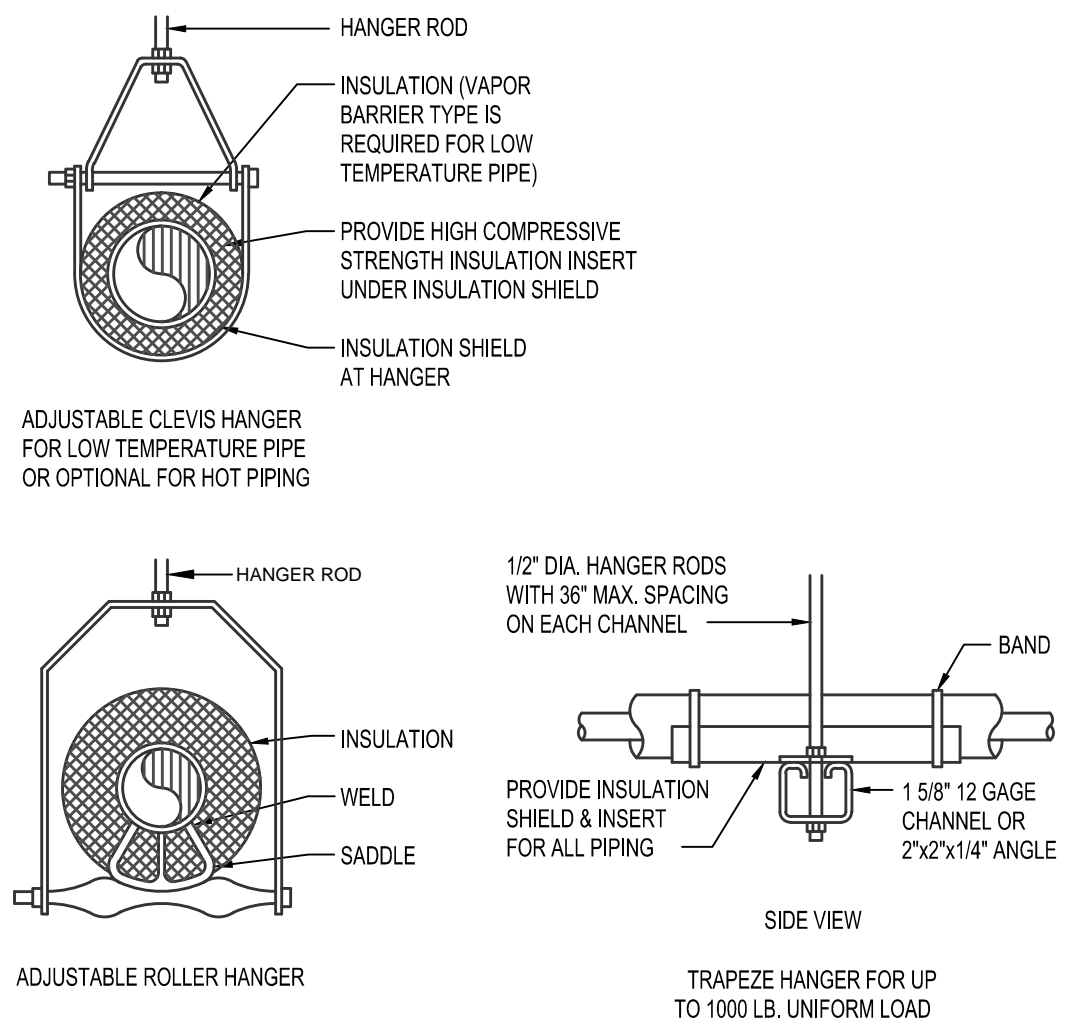
1 PIPE SLEEVE THRU FLOOR
NOT TO SCALE



2 PIPE SLEEVE THRU FIRE RATED FLOOR
NOT TO SCALE



3 ROUND DUCT HANGERS
NOT TO SCALE



MAXIMUM PIPE/TUBING SUPPORT SPACING, FEET																							
NOM. SIZE	THRU	75	1	1 1/2	1 3/4	2	2 1/2	3	4	5	6	8	10	12	14	16	18	20	24				
PIPE	7 FT.	7	7	8	10	11	12	14	16	17	19	22	23	25	27	28	30	32					
TUBING	5 FT.	6	7	8	9	9	10	12	13	14	16												

NOTE: FOR TRAPEZE HANGER TAKE SPACING OF SMALLEST SIZE ON TRAPEZE

4 TYPICAL PIPE HANGERS
NOT TO SCALE

TABLE 1: STRAP HANGERS (PAIR) SPACED				
W/D	MAX.	10" GA.	8" GA.	5" GA. OR LESS
72"	1" x 16 GA.	1" x 20 GA.	1" x 22 GA.	
96"	1" x 16 GA.	1" x 18 GA.	1" x 20 GA.	
120"	1" x 16 GA.	1" x 16 GA.	1" x 18 GA.	
144"	1" x 16 GA.	1" x 16 GA.	1" x 16 GA.	
192"	SPECIAL ANALYSIS REQUIRED			

TABLE 2: ALLOWABLE HANGER LOAD MAX.				
STRAPS	LBS.	RODS	LBS.	
2 - 1/22 GA.	520	2 - 1/4" DIA.	540	
2 - 1/20 GA.	640	2 - 3/8" DIA.	1360	
2 - 1/18 GA.	840	2 - 1/2" DIA.	2930	
2 - 1/16 GA.	1400	2 - 5/8" DIA.	4000	
		2 - 3/4" DIA.	6000	

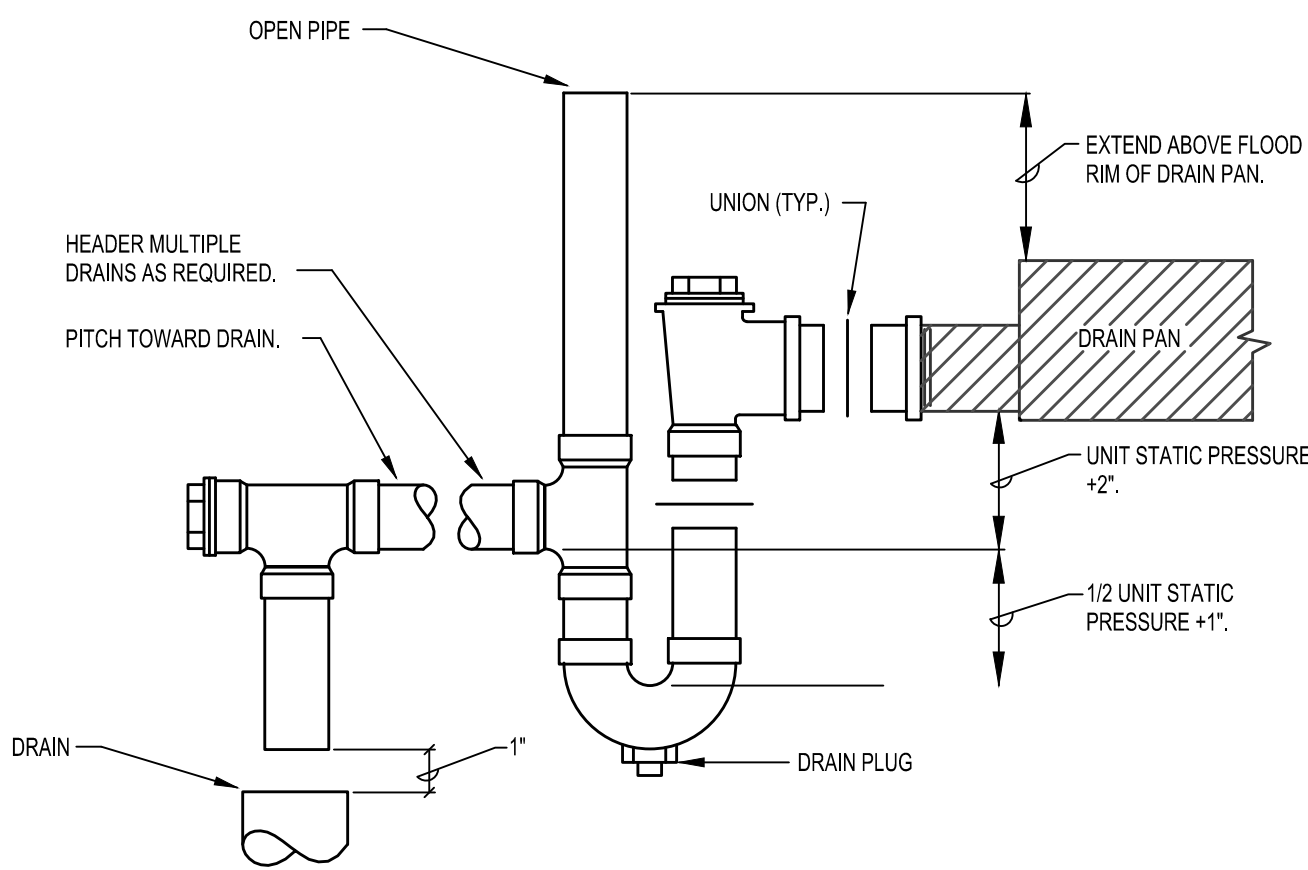
TABLE 3: TRAPEZOID ANGLE LOAD MAX.			
L	2 1/2" x 1 1/4"	2 1/2" x 1 1/2" x 1 1/4"	
36"	1200 LBS.	1940 LBS.	
48"	1160 LBS.	1900 LBS.	
60"	1060 LBS.	1800 LBS.	
72"	900 LBS.	1640 LBS.	
84"	660 LBS.	1400 LBS.	
96"	320 LBS.	1060 LBS.	

NOTES:

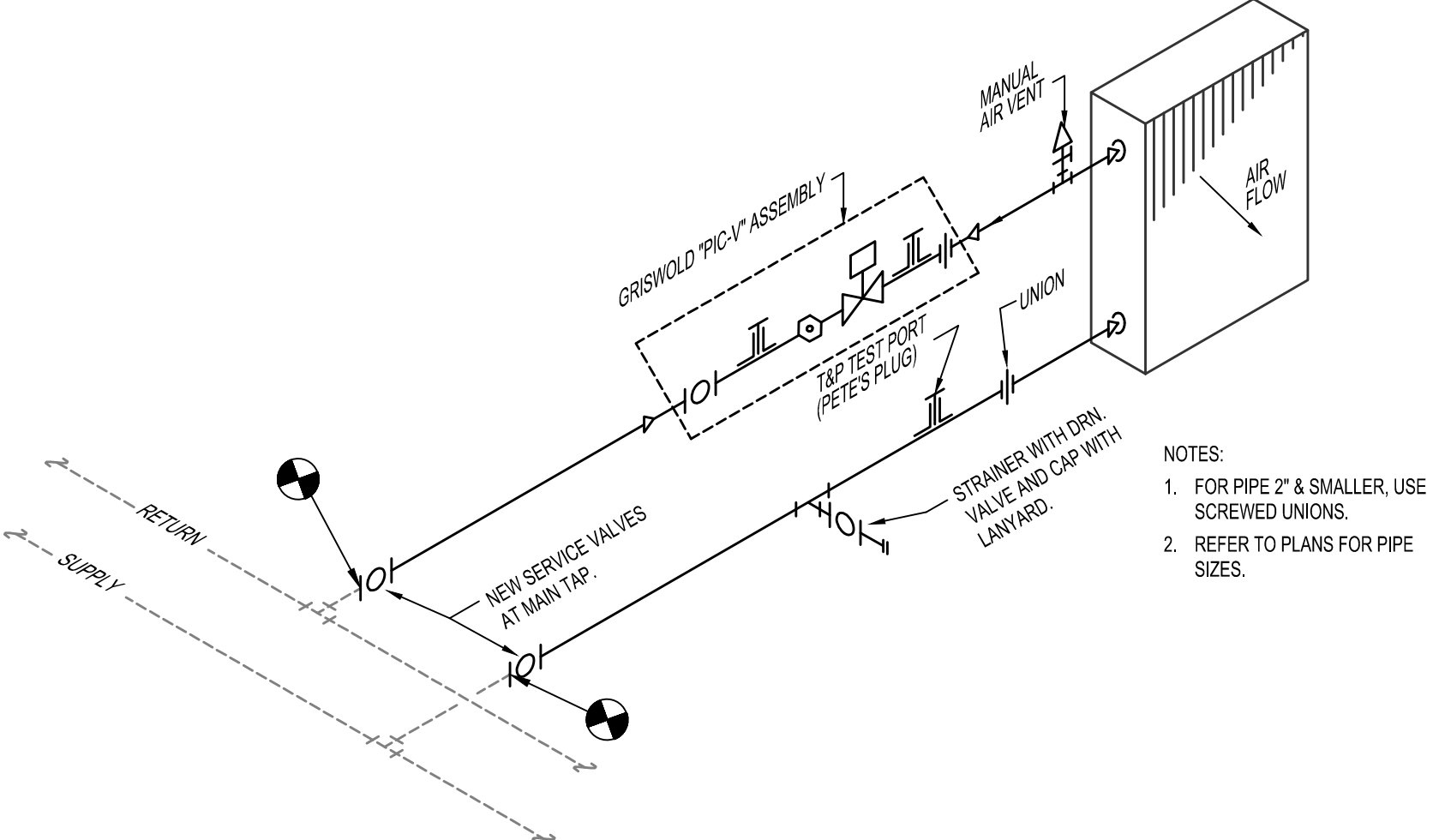
1. TABULATED DATA FROM SMACNA ALLOYS FOR COLD REINFORCING AND INSULATION, BUT NO EXTERNAL LOAD.
2. PROVIDE HIGH DENSITY INSERT AT TRAPEZOID FOR INSULATED DUCTS.

- NOTES:
1. PROVIDE ALL DRIP POINTS ON STEAM MAINS WITH A 1/2\"/>

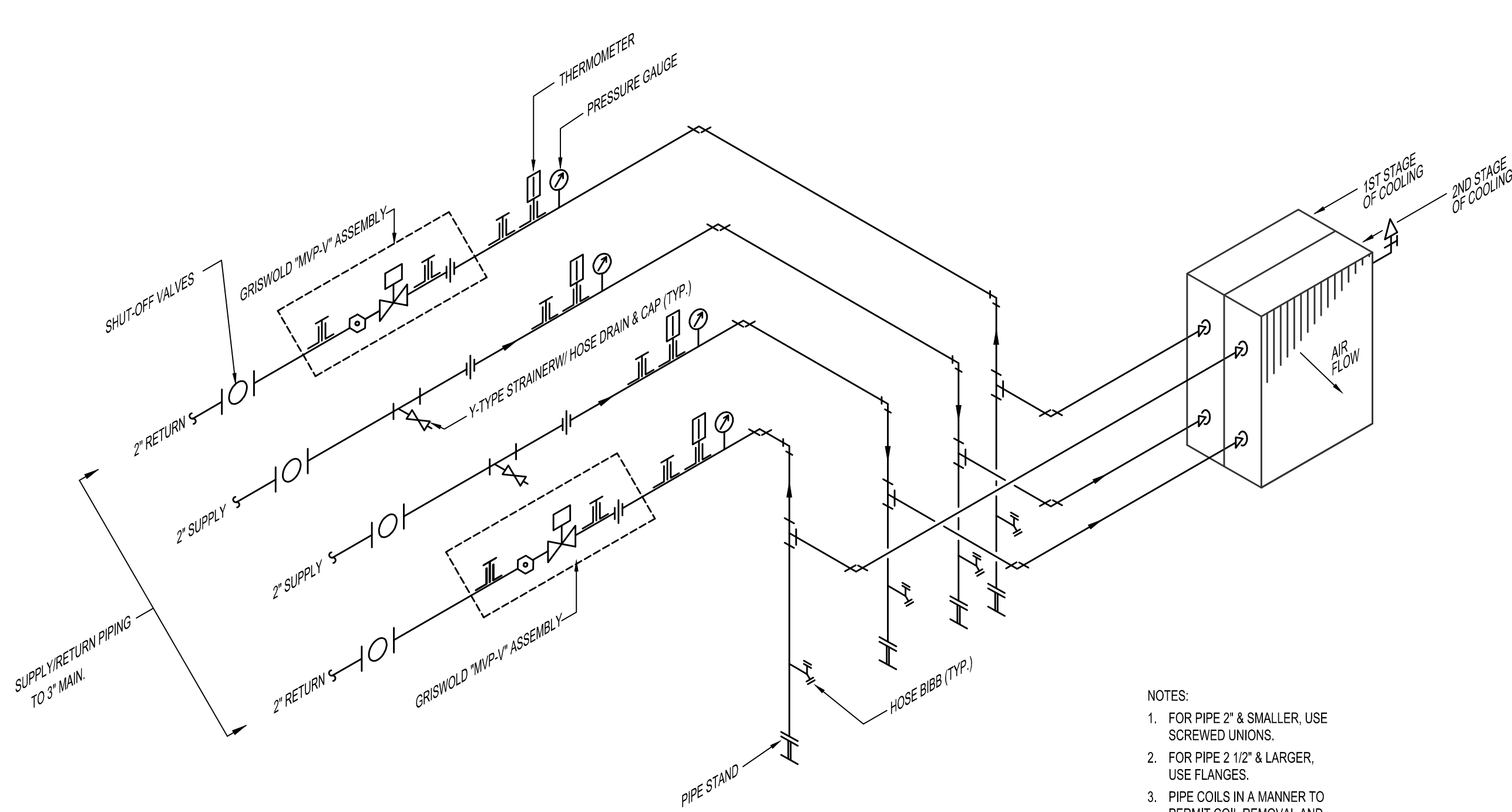
5 FLOAT AND THERMOSTATIC AND/OR INVERTED BUCKET TRAP SET CONNECTIONS
NOT TO SCALE



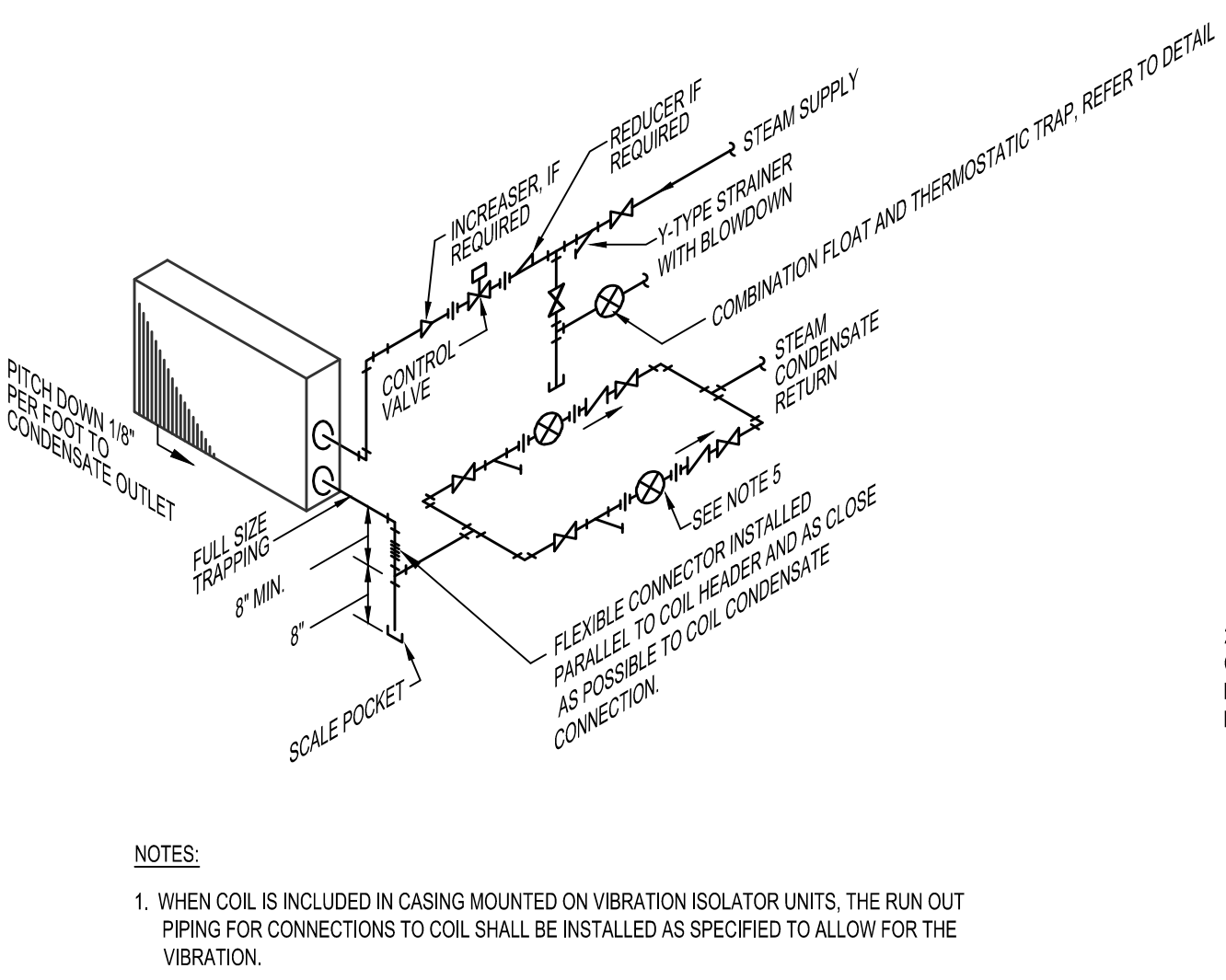
6 A.H.U. DRAIN PIPING
NOT TO SCALE



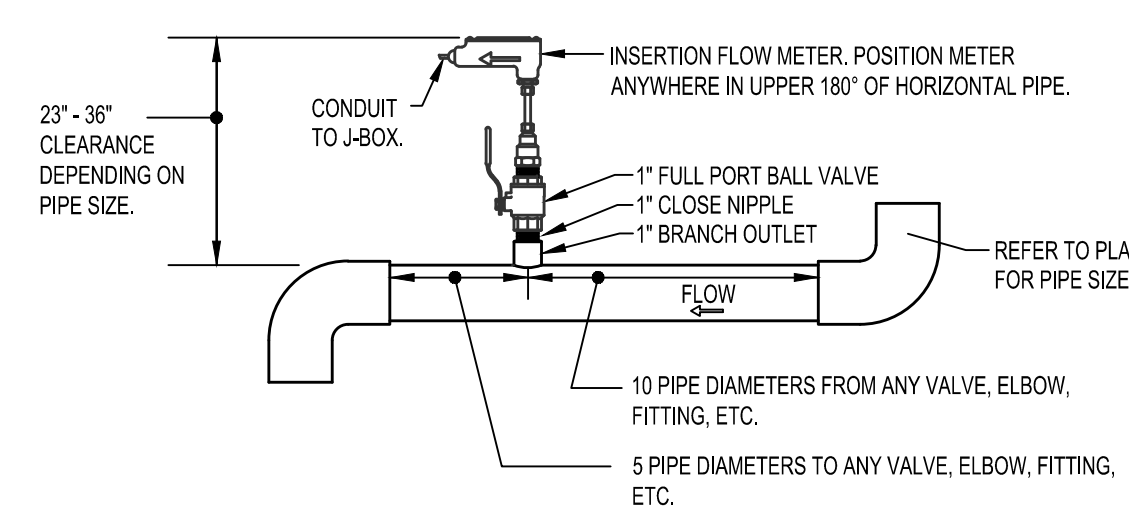
7 TERMINAL AIR DEVICE HW PIPING SCHEMATIC
NOT TO SCALE



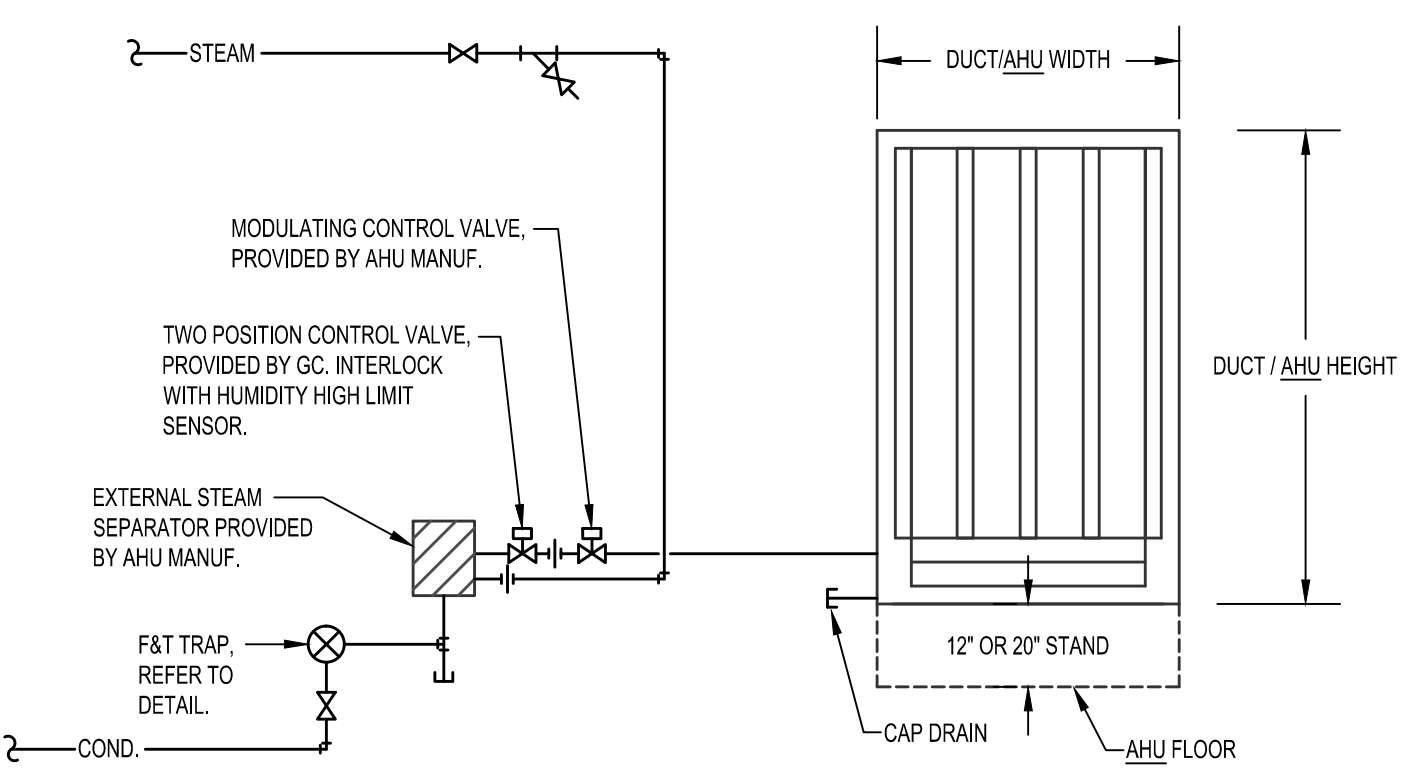
9 COOLING COIL PIPING SCHEMATIC - AHU-5 (TYP. OF 2)
NOT TO SCALE



10 STEAM COIL PIPING SCHEMATIC - PHC-5
NOT TO SCALE



11 INSERTION FLOW METER
N.T.S.



12 SCHEMATIC: H-5
NOT TO SCALE

REVISIONS	DESCRIPTION	DATE



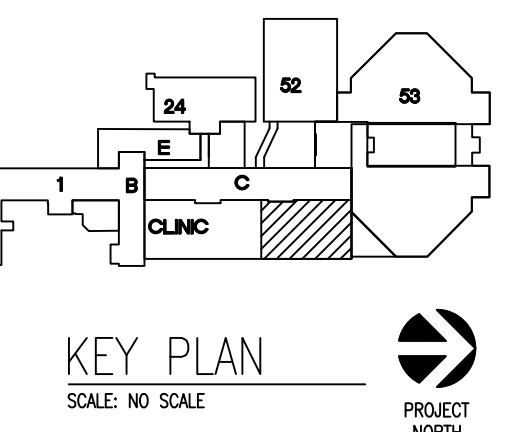
Dept. of Veterans Affairs
Jack C. Montgomery
Medical Center
1011 Honor Height Drive
Muskogee, Oklahoma 74401

ENGINEER:
RMD CONSULTING, LLC
2815 VALLEY VIEW LANE, STE. 214
DALLAS, TX 75234
P: 972-488-8077 F: 972-488-8174
OK REG. ENGINEERING FIRM: 5183

CONSULTANTS:
ARCHITECT:
ARCHITECTURAL CONCEPTS, INC.
669 AIRPORT FREEWAY, STE. 300
HURST, TX 76053
P: 817-285-8885 F: 817-285-8021

APPROVED:	APPROVED: Interior Designer	APPROVED: Safety Manager	APPROVED: Medical Center Director
APPROVED:	APPROVED:	APPROVED: Infection Control Nurse	APPROVED: Associate Director
APPROVED:	APPROVED:	APPROVED: Industrial Hygienist	APPROVED: Chief of Staff
APPROVED:	APPROVED:	APPROVED: President A.F.G.E. 2250	APPROVED: Chief of Engineering Service

DRAWING TITLE HVAC DETAILS		PROJECT TITLE REPLACE LABORATORY AIR HANDLING UNITS	
PROJECT NO. 623-11-107	CONTRACT NO. VA256-12-C-0295	DESIGNED BY:	DRAWN BY: C. A. B.
BUILDING NO. CLINICAL	AUTOCAD FILE NAME:	LOCATION Jack C. Montgomery VA Medical Center	DRAWING NO. MH4.0



DATE
8/19/2013
SCALE
AS SHOWN
DRAWING NO.
MH4.0
DWG. 19 OF 40

DEPARTMENT OF
VETERANS AFFAIRS