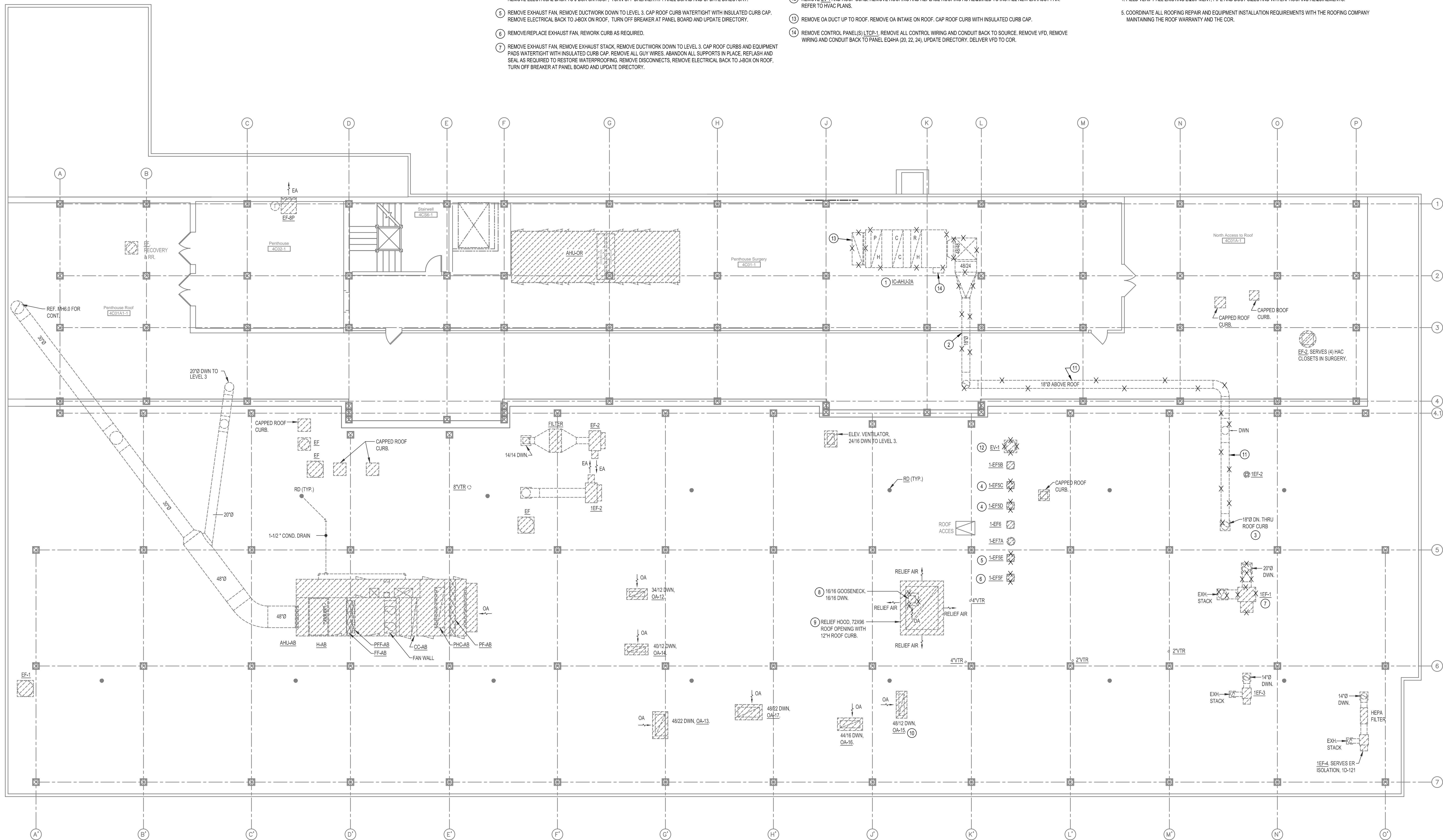


## KEYED NOTES:

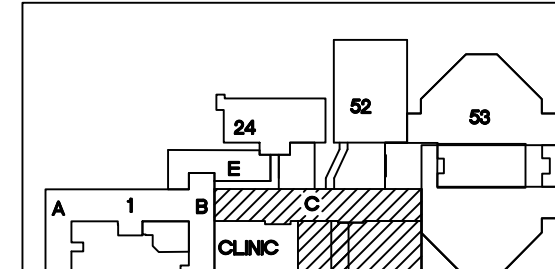
- 1 AHU IC-AHU-2A WILL BE RE-SHEAVED AND REBALANCED TO PROVIDE ADDITIONAL COOLING DURING PHASED CONSTRUCTION. REFER TO PHASING PLAN FOR DETAILS. AFTER AHU-5 AND HRL-5 ARE INSTALLED AND OPERATIONAL, REMOVE IC-AHU-2A COMPLETE. REMOVE ALL SUPPLY AND OUTSIDE AIR DUCTWORK. REMOVE ALL DUCTWORK SUPPORTS AND HANGERS. REMOVE ALL CONTROLS AND CONTROL VALVES AND DEVICES. REMOVE ALL CONTROL WIRING AND CONDUIT BACK TO SOURCE. REMOVE ALL PNEUMATIC TUBING BACK TO SOURCE AND CAP AT SOURCE. REMOVE ALL ELECTRICAL WIRING AND CONDUIT BACK TO ELECTRICAL PANEL AND UPDATE DIRECTORY. CONCRETE EQUIPMENT PADS TO REMAIN.
- 2 PATCH WALL TO MATCH EXISTING MATERIAL. PRIME AND PAINT EXTERIOR TO MATCH EXISTING COLOR.
- 3 REMOVE DUCTWORK DOWN TO LEVEL 3. CAP ROOF CURB WATERTIGHT WITH INSULATED CURB CAP.
- 4 REMOVE EXHAUST FAN, CAP ROOF CURB WATERTIGHT WITH INSULATED CURB CAP. DUCTWORK ON LEVEL 3 TO REMAIN. REMOVE ELECTRICAL BACK TO J-BOX ON ROOF. TURN OFF BREAKER AT PANEL BOARD AND UPDATE DIRECTORY.
- 5 REMOVE EXHAUST FAN, REMOVE DUCTWORK DOWN TO LEVEL 3. CAP ROOF CURB WATERTIGHT WITH INSULATED CURB CAP. REMOVE ELECTRICAL BACK TO J-BOX ON ROOF. TURN OFF BREAKER AT PANEL BOARD AND UPDATE DIRECTORY.
- 6 REMOVE/REPLACE EXHAUST FAN, REWORK CURB AS REQUIRED.
- 7 REMOVE EXHAUST FAN, REMOVE EXHAUST STACK. REMOVE DUCTWORK DOWN TO LEVEL 3. CAP ROOF CURBS AND EQUIPMENT PADS WATERTIGHT WITH INSULATED CURB CAP. REMOVE ALL 6X4 WIRES. ABANDON ALL SUPPORTS IN PLACE. REFLASH AND SEAL AS REQUIRED TO RESTORE WATERPROOFING. REMOVE DISCONNECTS. REMOVE ELECTRICAL BACK TO J-BOX ON ROOF. TURN OFF BREAKER AT PANEL BOARD AND UPDATE DIRECTORY.
- 8 REMOVE GOOSENECK AND 16"16 OUTSIDE AIR DUCT DOWN TO MECHANICAL ROOM. CAP ROOF CURB WATERTIGHT WITH INSULATED CURB CAP.
- 9 REMOVE RELIEF HOOD TO ACCESS MECHANICAL ROOM FOR DEMOLITION AND REMOVAL OF EXISTING EQUIPMENT AND INSTALLATION OF NEW EQUIPMENT. PROVIDE TEMPORARY VENTILATED COVER DURING CONSTRUCTION AS REQ'D TO MAINTAIN WATERPROOF INTEGRITY OF THE ROOF OPENING. REINSTALL RELIEF HOOD AFTER NEW EQUIPMENT HAS BEEN INSTALLED.
- 10 REMOVE OA-15. REMOVE DUCTWORK BELOW THE ROOF SERVING AHU-5. CAP ROOF CURB WATERTIGHT WITH INSULATED CURB CAP.
- 11 ABANDON ALL SUPPORTS IN PLACE. REFLASH AND SEAL PITCH PANS AS REQUIRED TO RESTORE WATERPROOFING.
- 12 REMOVE EV-1 AND ROOF CURB. REMOVE ROOFING AND REPLACE ROOFING AS REQUIRED TO INSTALL NEW EXHAUST FAN. REFER TO TRAC PLANS.
- 13 REMOVE OA DUCT UP TO ROOF. REMOVE OA INTAKE ON ROOF. CAP ROOF CURB WITH INSULATED CURB CAP.
- 14 REMOVE CONTROL PANEL(S) LTCP-1. REMOVE ALL CONTROL WIRING AND CONDUIT BACK TO SOURCE. REMOVE VFD. REMOVE WIRING AND CONDUIT BACK TO PANEL EQ444 (20, 22, 24). UPDATE DIRECTORY. DELIVER VFD TO COR.

## GENERAL NOTES:

1. COORDINATE ALL DEMOLITION WORK WITH PHASING PLAN, NEW WORK AND THE COR. ALL ABANDONED CONTROL DEVICES ARE NOT SHOWN FOR CLARITY. REMOVE ALL ABANDONED CONTROL DEVICES SERVING AHU IC-AHU-2A AS DIRECTED BY COR.
2. EQUIPMENT REMOVED FROM AND INSTALLED IN THE LEVEL 3 INTERSTITIAL MECHANICAL ROOM SHALL BE HOISTED THROUGH THE RELIEF HOOD ROOF OPENING. DISASSEMBLE EXISTING EQUIPMENT AS REQ'D BY HOISTING LIMITATIONS. COORDINATE ALL NEW EQUIPMENT SIZES, LIFTING REQUIREMENTS AND SHIPPING SPLITS WITH THE MANUFACTURER.
3. COORDINATE AND SCHEDULE ALL EQUIPMENT DELIVERIES AND CRANEHOISTING REQUIREMENTS WITH THE COR. USE OF THE PARKING LOT TO STAGE EQUIPMENT AND CRANE WILL BE RESTRICTED TO AFTER NORMAL WORKING HOURS AND WEEKENDS AS APPROVED BY THE COR.
4. FIELD VERIFY ALL EXISTING EQUIPMENT, PIPE AND DUCT SIZES AND WATERPROOFING REQUIREMENTS.
5. COORDINATE ALL ROOFING REPAIR AND EQUIPMENT INSTALLATION REQUIREMENTS WITH THE ROOFING COMPANY MAINTAINING THE ROOF WARRANTY AND THE COR.



This seal according to this document was  
authorized by Robert M. Dames, 20270 on  
01/19/2013. Alteration of a sealed document  
without proper notation to the responsible  
engineer is an offense under the  
Oklahoma Engineering Practice Act.



KEY PLAN

SCALE: NO SCALE

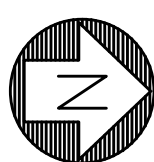
PROJECT  
NORTH

## ASBESTOS NOTE:

IF THE EXECUTION OF THIS WORK REQUIRES THE DISTURBING OF ANY SUBSTANCE WHICH APPEARS TO BE ASBESTOS OR WHICH MAY CONTAIN ASBESTOS FIBER, NOTIFY THE OWNER BEFORE CONTINUING WORK AT THE SUSPECT LOCATION. ANY MATERIAL TESTING POSITIVE SHALL BE REMOVED BY THE OWNER BEFORE WORK CONTINUES.

NOTE: EXISTING CONDITIONS SHOWN WERE DERIVED FROM OWNER FURNISHED DRAWINGS AND FIELD OBSERVATIONS. SOME BUILDING FEATURES AND MEP SYSTEMS ARE NOT SHOWN FOR CLARITY. FIELD VERIFY BUILDING CONSTRUCTION. FIELD VERIFY THE LOCATION, SIZE AND QUANTITY OF ALL EQUIPMENT.

NOTE: REFER TO DETAILS AND SCHEMATICS FOR PIPING, VALVES, FITTINGS AND OTHER APPURTENANCES REQUIRED, BUT NOT SHOWN FOR CLARITY.



## 1 LEVEL 4, WING C: PENTHOUSE &amp; ROOF HVAC DEMO PLAN

12'x12'

REVISIONS	DESCRIPTION	DATE



Dept. of Veterans Affairs  
Jack C. Montgomery  
Medical Center  
1011 Honor Height Drive  
Muskogee, Oklahoma 74401

## ENGINEER:

RMD CONSULTING, LLC  
2815 VALLEY VIEW LANE, STE. 214  
DALLAS, TX 75234  
P: 972-488-8077 F: 972-488-8174  
OK REG. ENGINEERING FIRM: 5183

## CONSULTANTS:

ARCHITECT:  
ARCHITECTURAL CONCEPTS, INC.  
669 AIRPORT FREEWAY, STE. 300  
HURST, TX 76053  
P: 817-285-8885 F: 817-285-8021

## APPROVED:

## APPROVED:

## APPROVED:

## APPROVED:

## APPROVED: Interior Designer

## APPROVED:

## APPROVED:

## APPROVED:

## APPROVED: Safety Manager

## APPROVED: Infection Control Nurse

## APPROVED: Industrial Hygienist

## APPROVED: President A.F.G.E. 2250

## APPROVED: Medical Center Director

## APPROVED: Associate Director

## APPROVED: Chief of Staff

## APPROVED: Chief of Engineering Service

DRAWING TITLE  
LEVEL 4, WING C:  
PENTHOUSE & ROOF  
HVAC DEMO PLAN

PROJECT NO.  
623-11-107

BUILDING NO.  
CLINICAL

CONTRACT NO.  
VA256-12-C-0295

AUTOCAD FILE NAME:

PROJECT TITLE  
REPLACE LABORATORY  
AIR HANDLING UNITS

DESIGNED BY:

DRAWN BY:

CHECKED BY:

LOCATION  
Jack C. Montgomery VA Medical CenterDATE  
8/19/2013SCALE  
AS SHOWNDRAWING NO.  
MHD3.0

DWG. 11 OF 40

DEPARTMENT OF  
VETERANS AFFAIRS