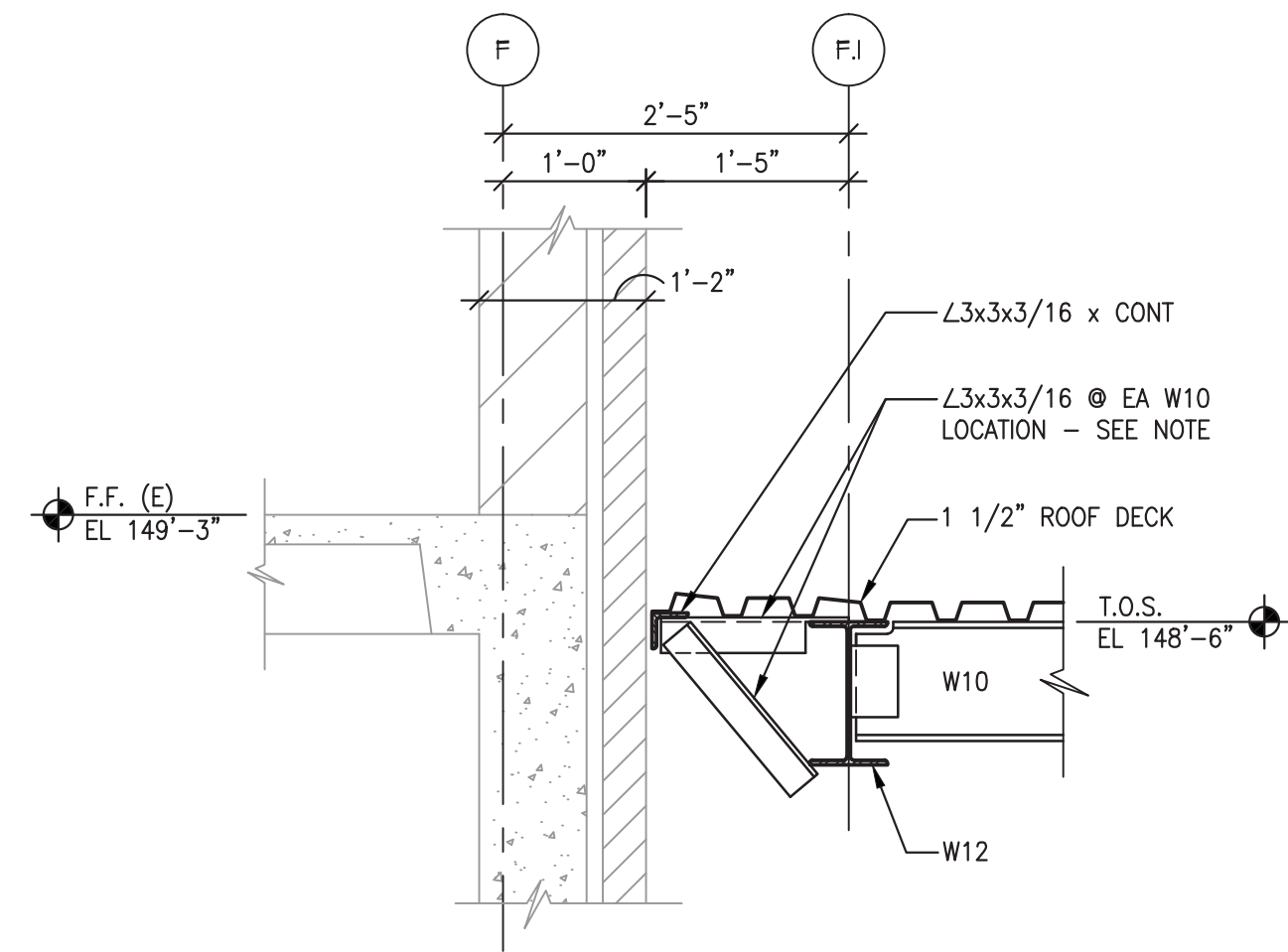
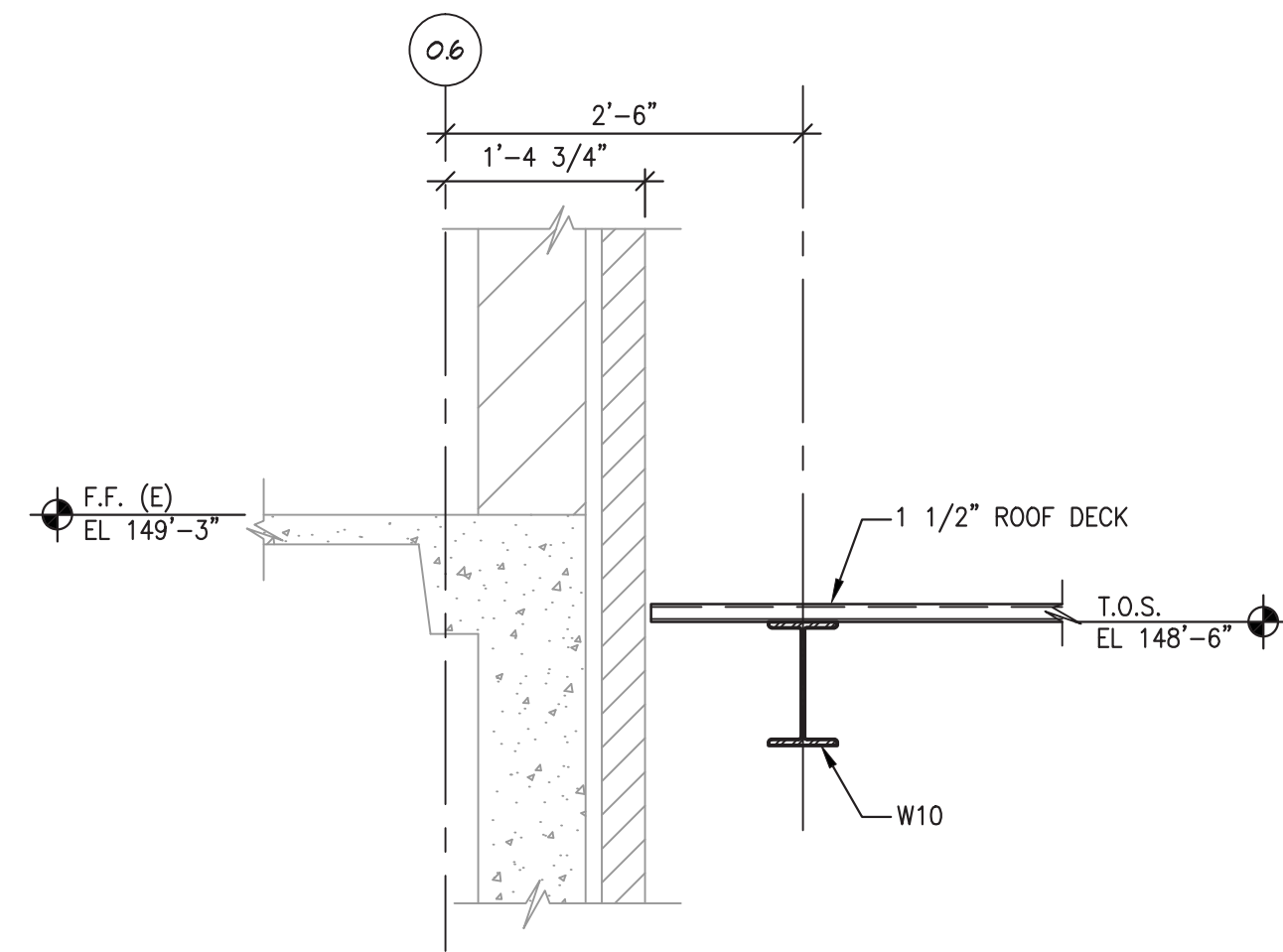


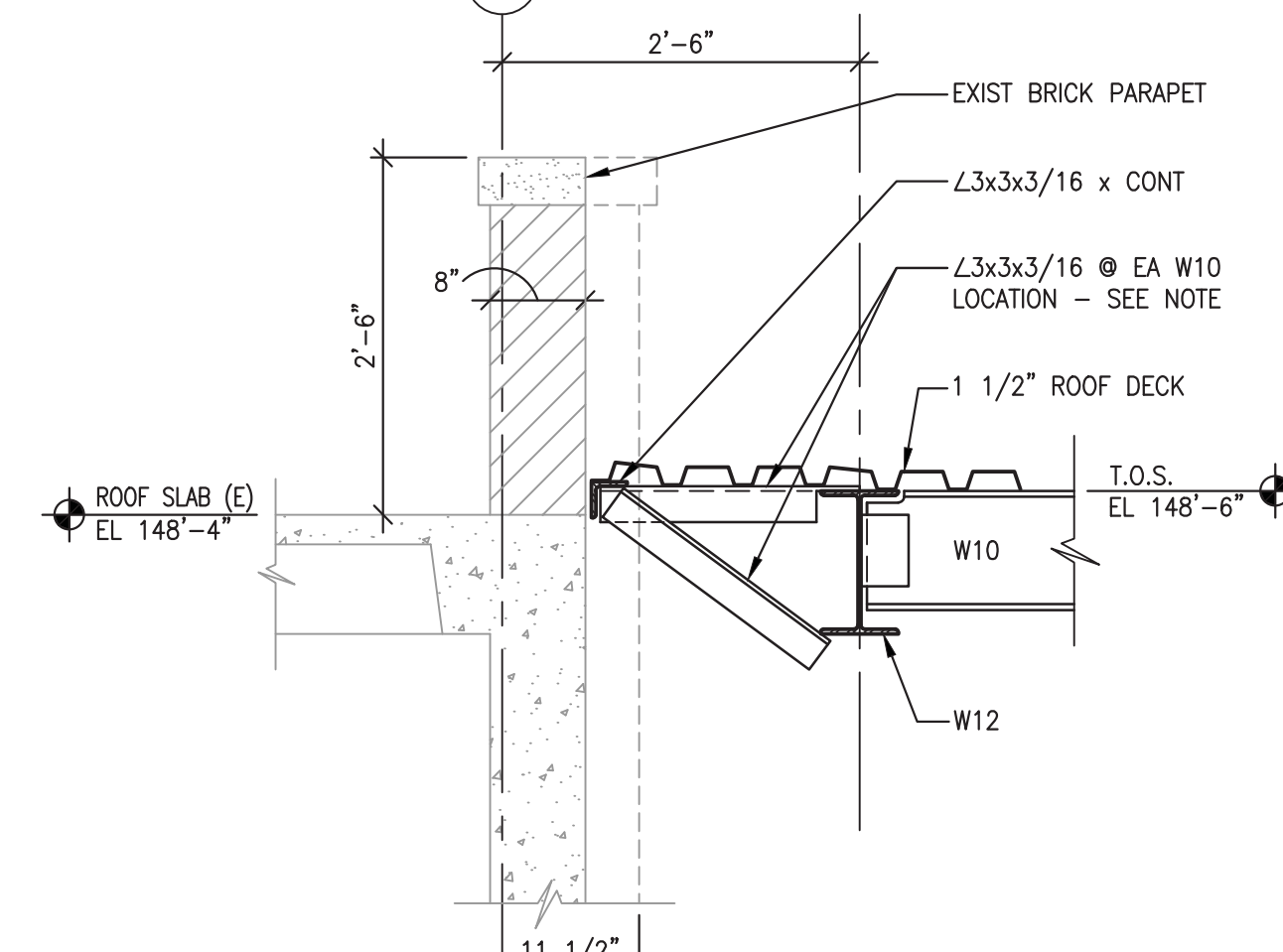
12-095 KHA Des Moines VA Addition/Struct/12-095_S-504.dwg 5-28-14 09:33:17 AM Tosh
VA FORM 08-6231



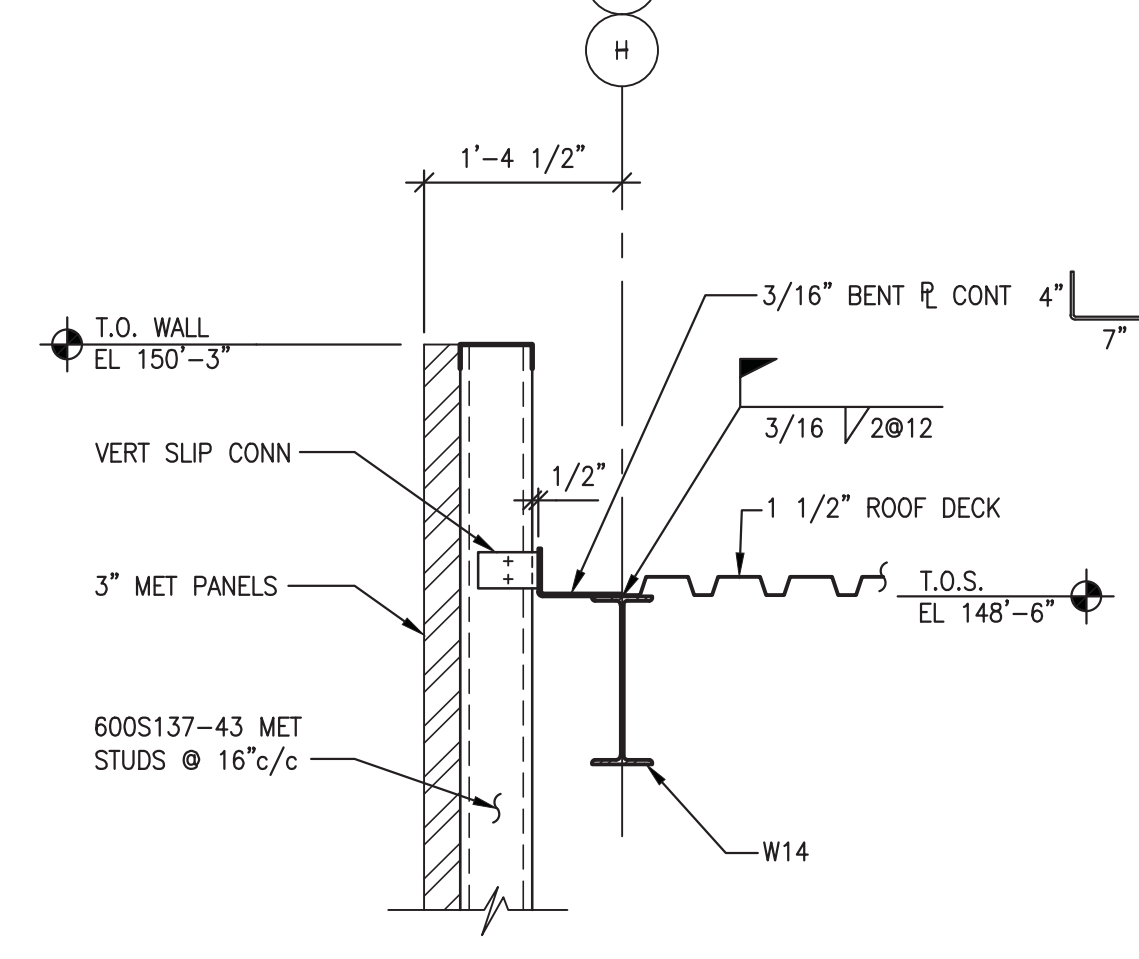
1 FRAMING DETAIL
S-504 SCALE : 3/4" = 1'-0"



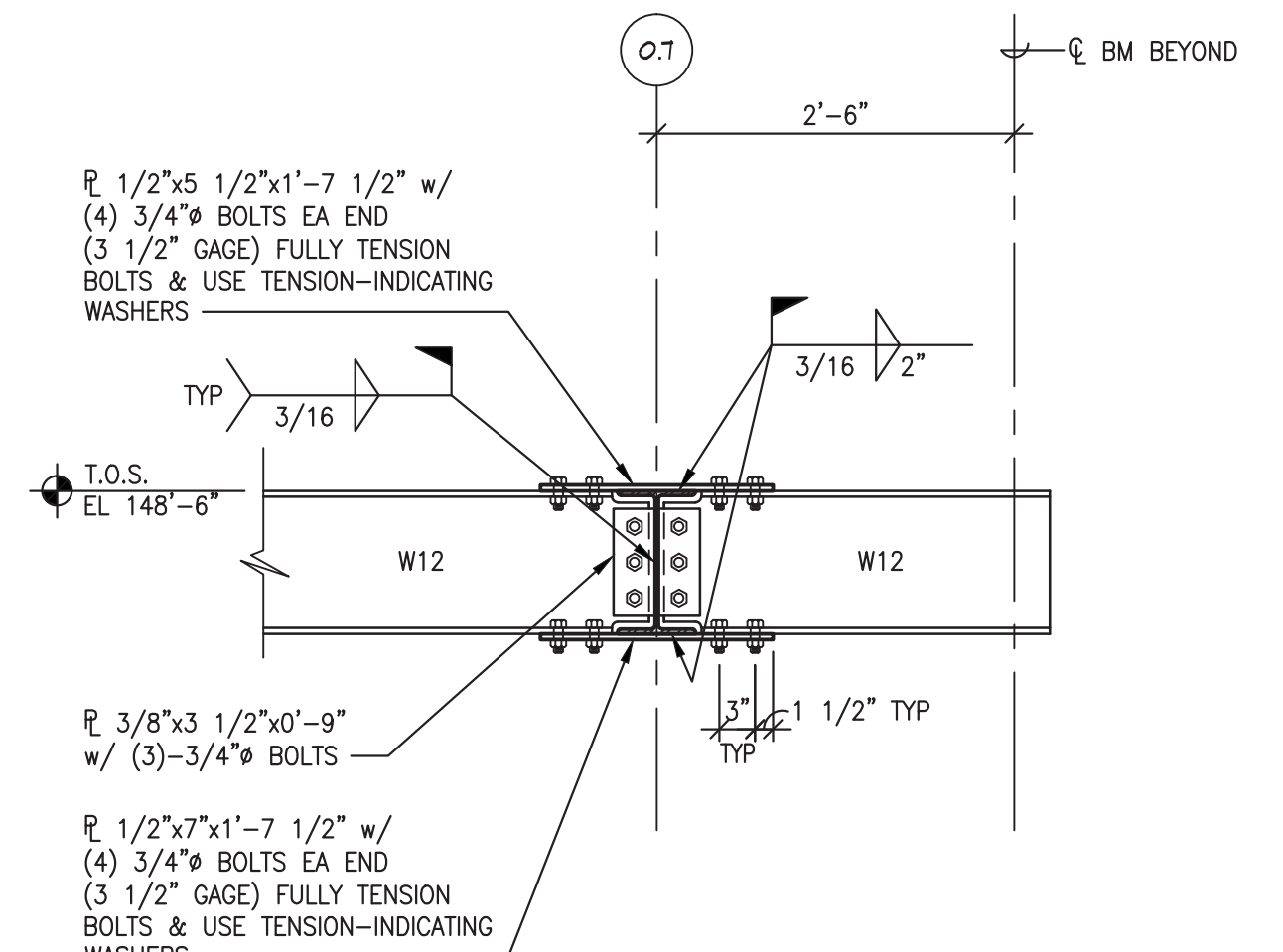
2 FRAMING DETAIL
S-504 SCALE : 3/4" = 1'-0"



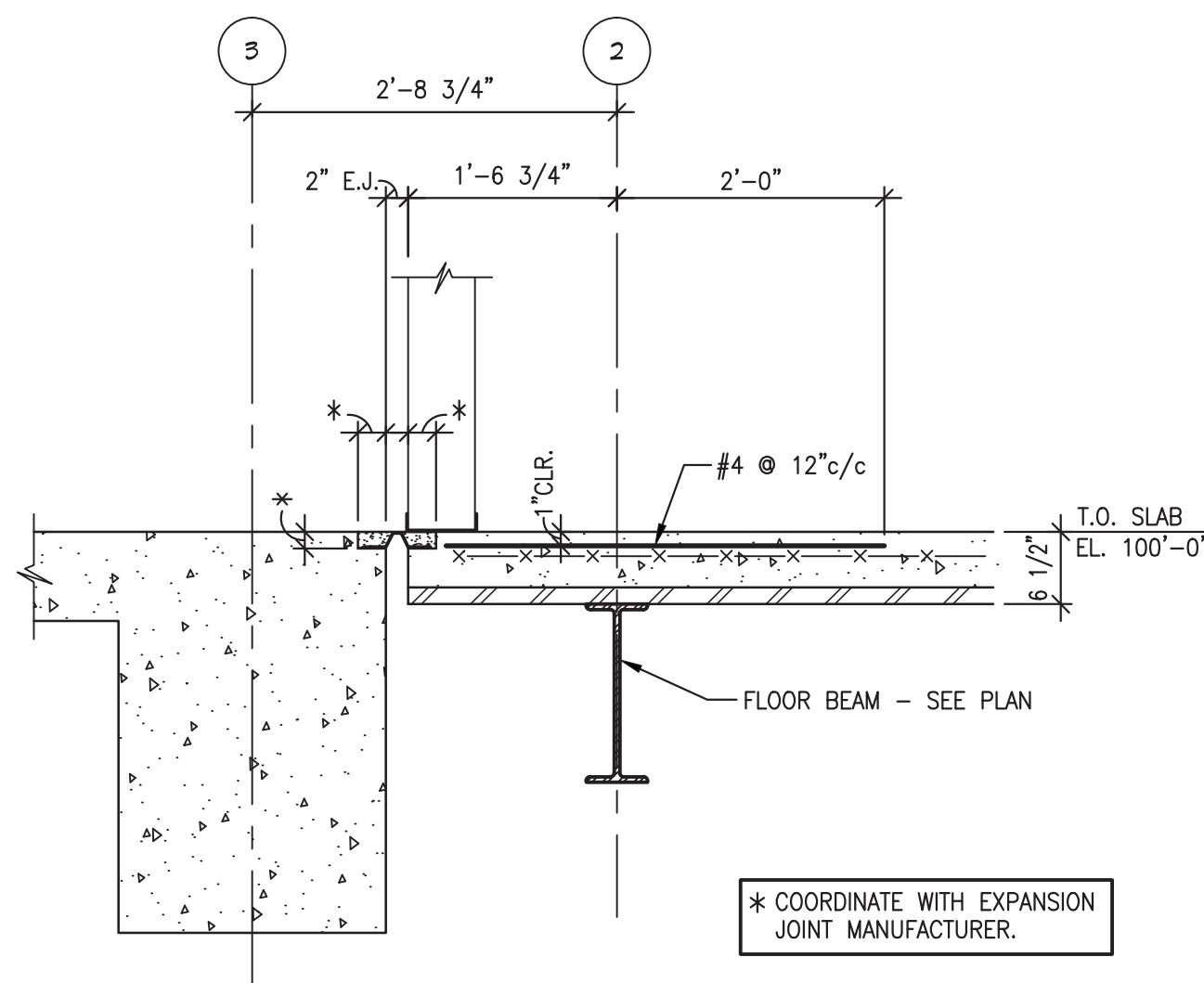
3 FRAMING DETAIL
S-504 SCALE : 3/4" = 1'-0"



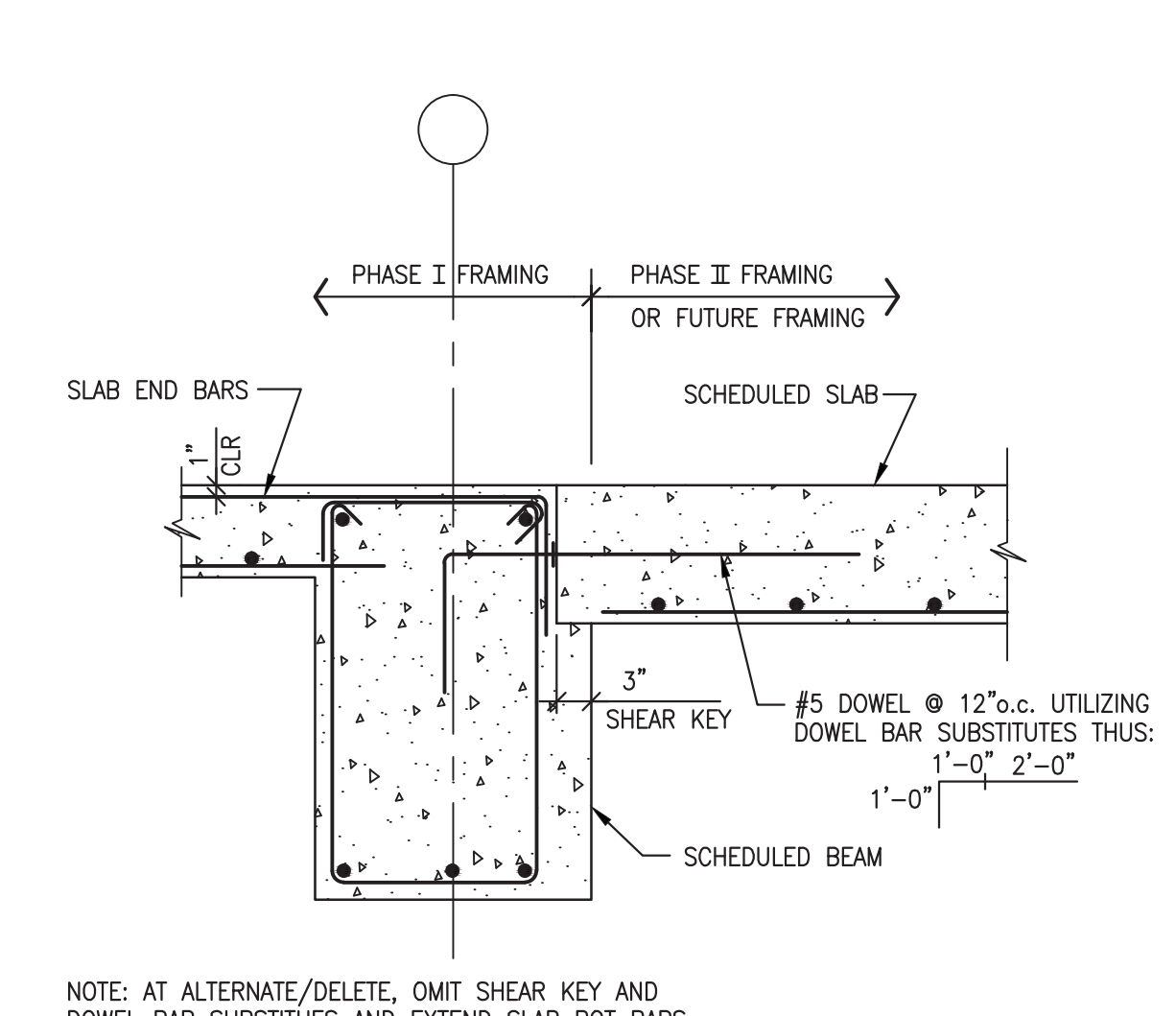
4 FRAMING DETAIL
S-504 SCALE : 3/4" = 1'-0"



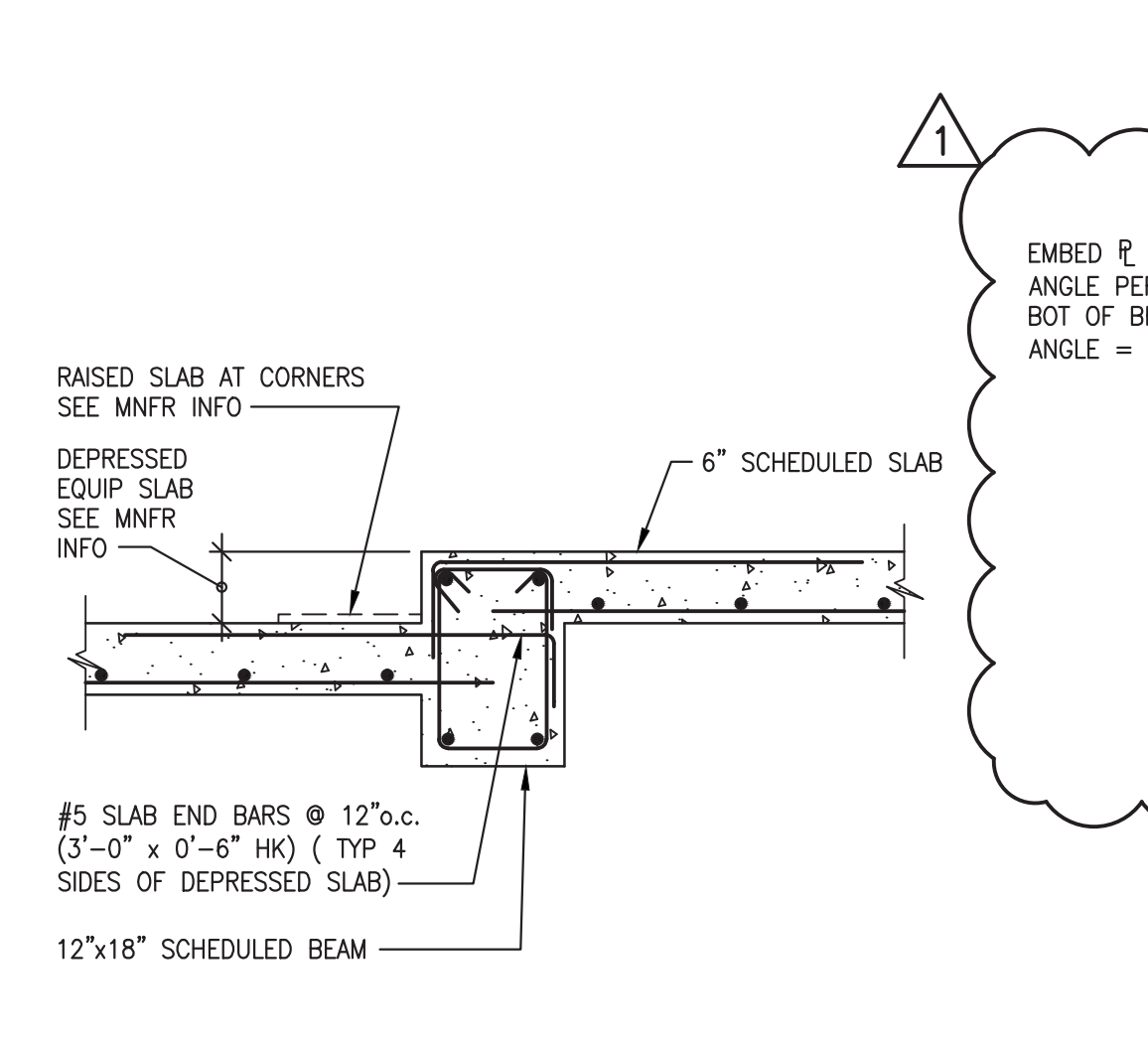
5 MOMENT CONNECTION DETAIL
S-504 SCALE : 3/4" = 1'-0"



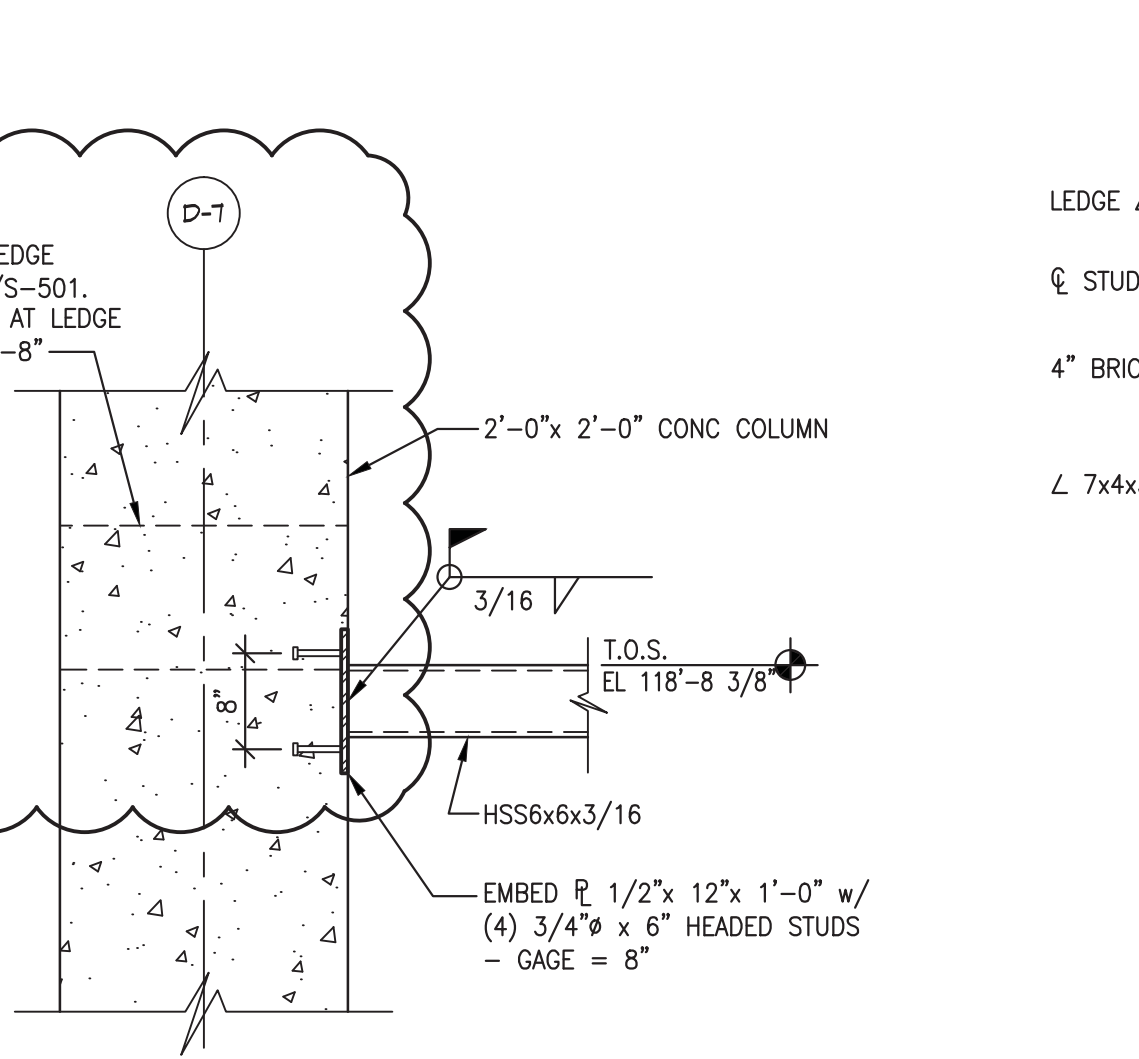
6 FRAMING DETAIL
S-504 SCALE : 3/4" = 1'-0"



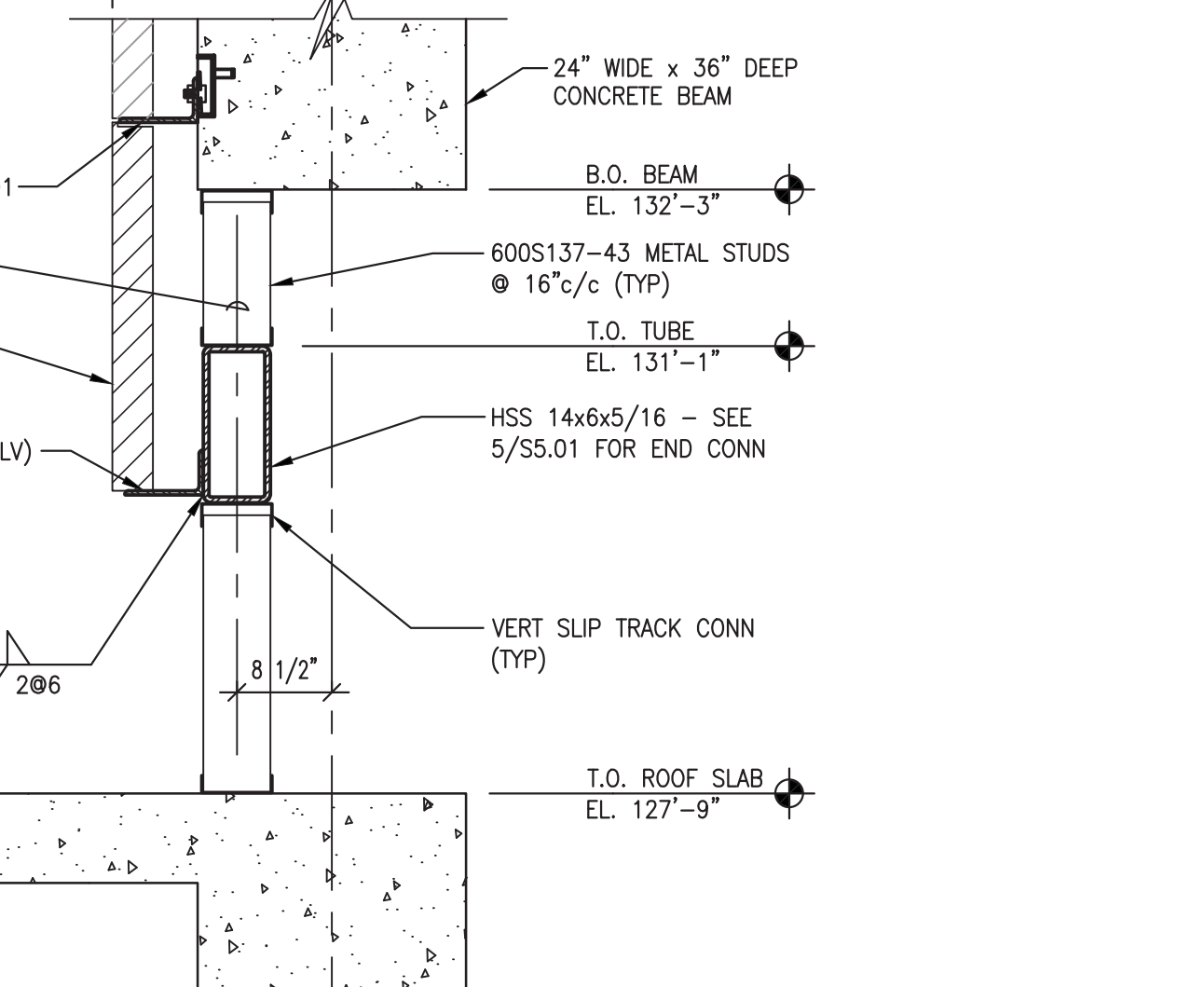
7 FRAMING DETAIL
S-504 SCALE : 3/4" = 1'-0"



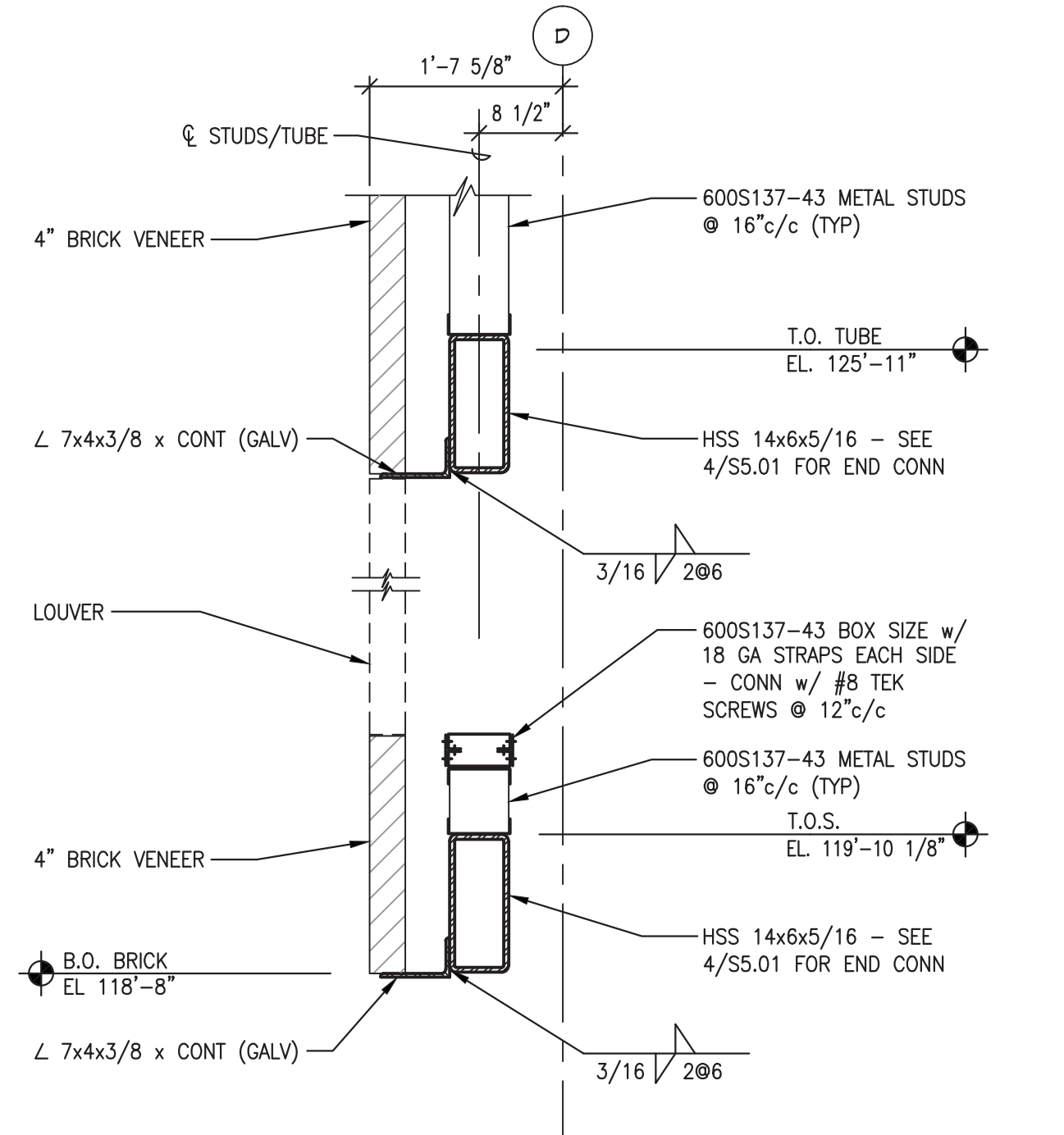
8 FRAMING DETAIL
S-504 SCALE : 3/4" = 1'-0"



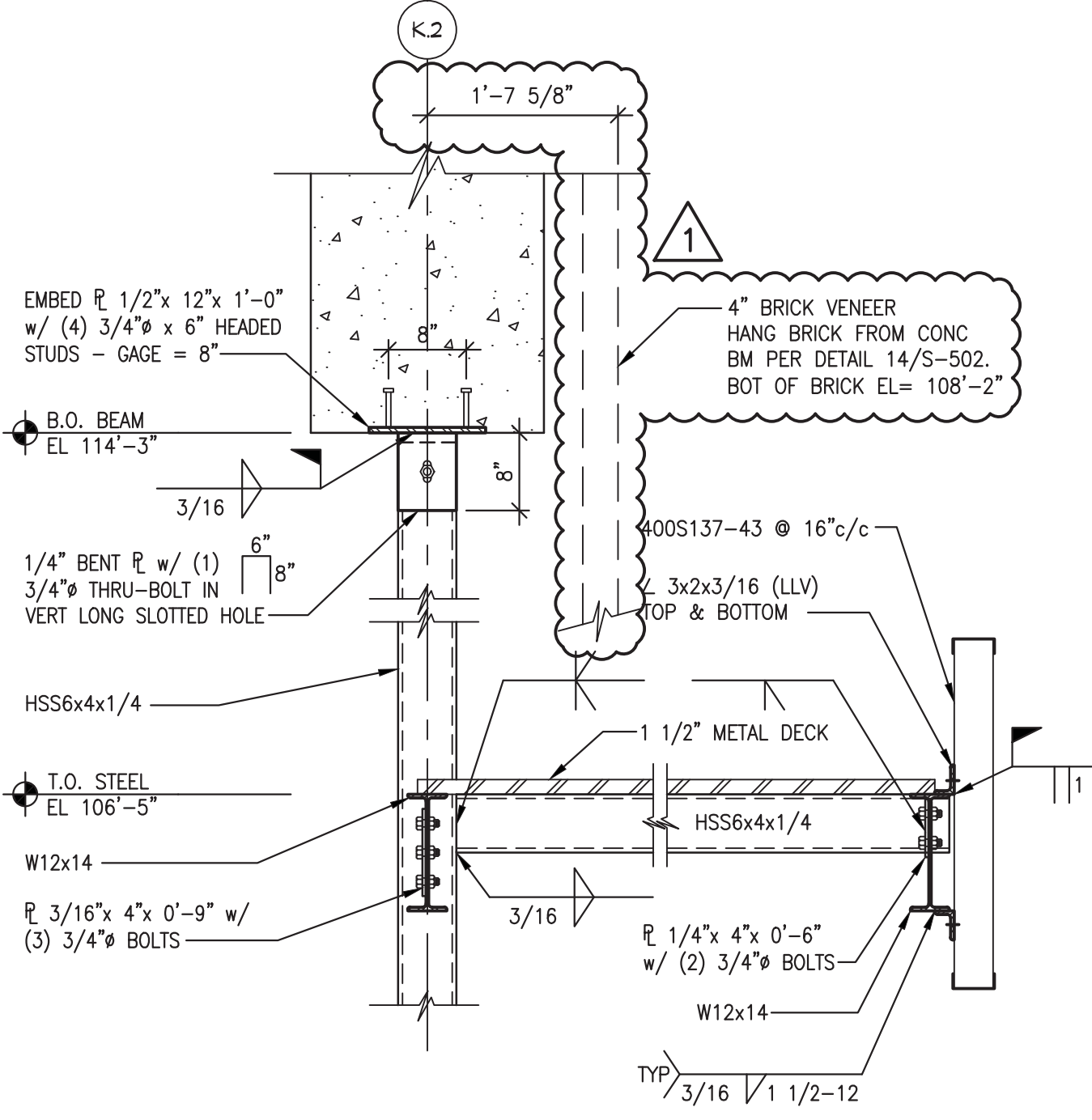
9 FRAMING DETAIL
S-504 SCALE : 3/4" = 1'-0"



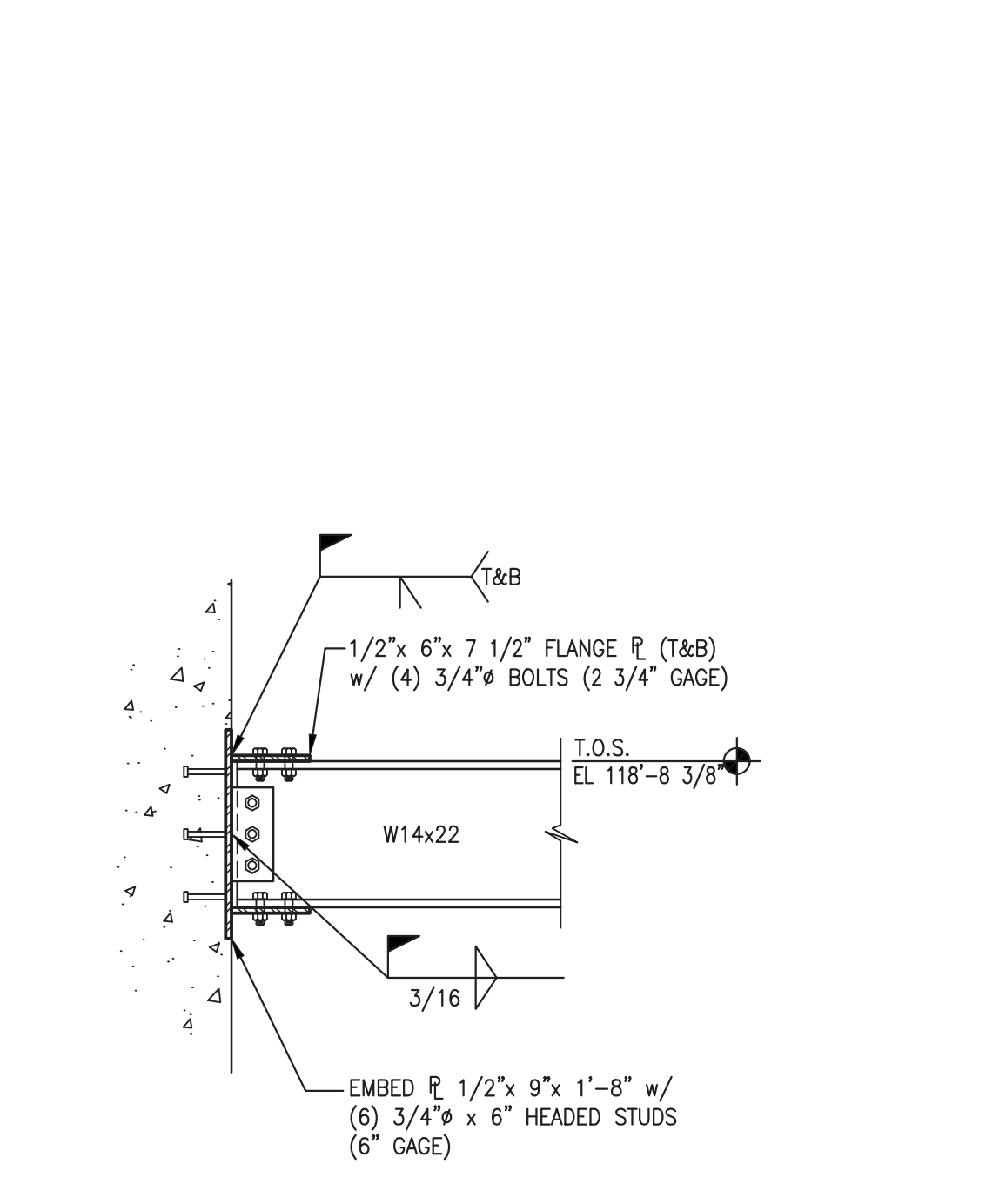
10 FRAMING DETAIL
S-504 SCALE : 3/4" = 1'-0"



11 FRAMING DETAIL
S-504 SCALE : 3/4" = 1'-0"



12 FRAMING DETAIL
S-504 SCALE : 3/4" = 1'-0"



13 FRAMING DETAIL
S-504 SCALE : 3/4" = 1'-0"

CONSULTANTS:

NIELSEN - BAUMERT ENGINEERING INC.
9802 NICHOLAS STREET, SUITE 105 Omaha, NE 68114
(402) 496-4750 FAX (402) 496-1147

ARCHITECT/ENGINEERS:

KHA
Kenneth Hahn
Architects

1343 South 75th Street | Omaha, NE 68124-1610 | 402.391.2111 | www.kharch.com

Drawing Title
FRAMING DETAILS

Approved Project Director

AE Project #
171-001

Project Title
BUILD SUPPLY, PROCESSING
AND DISTRIBUTION

Location
VAMC DES MOINES IOWA

Date
13 FEBRUARY 2014

Checked
KPK

Drawn
Tosh/JLM

Project Number
636-121

Building Number
BUILDING 1W

Drawing Number

S-504

Dwg. 95 of 235

Office of
Construction
and Facilities
Management

Department of
Veterans Affairs