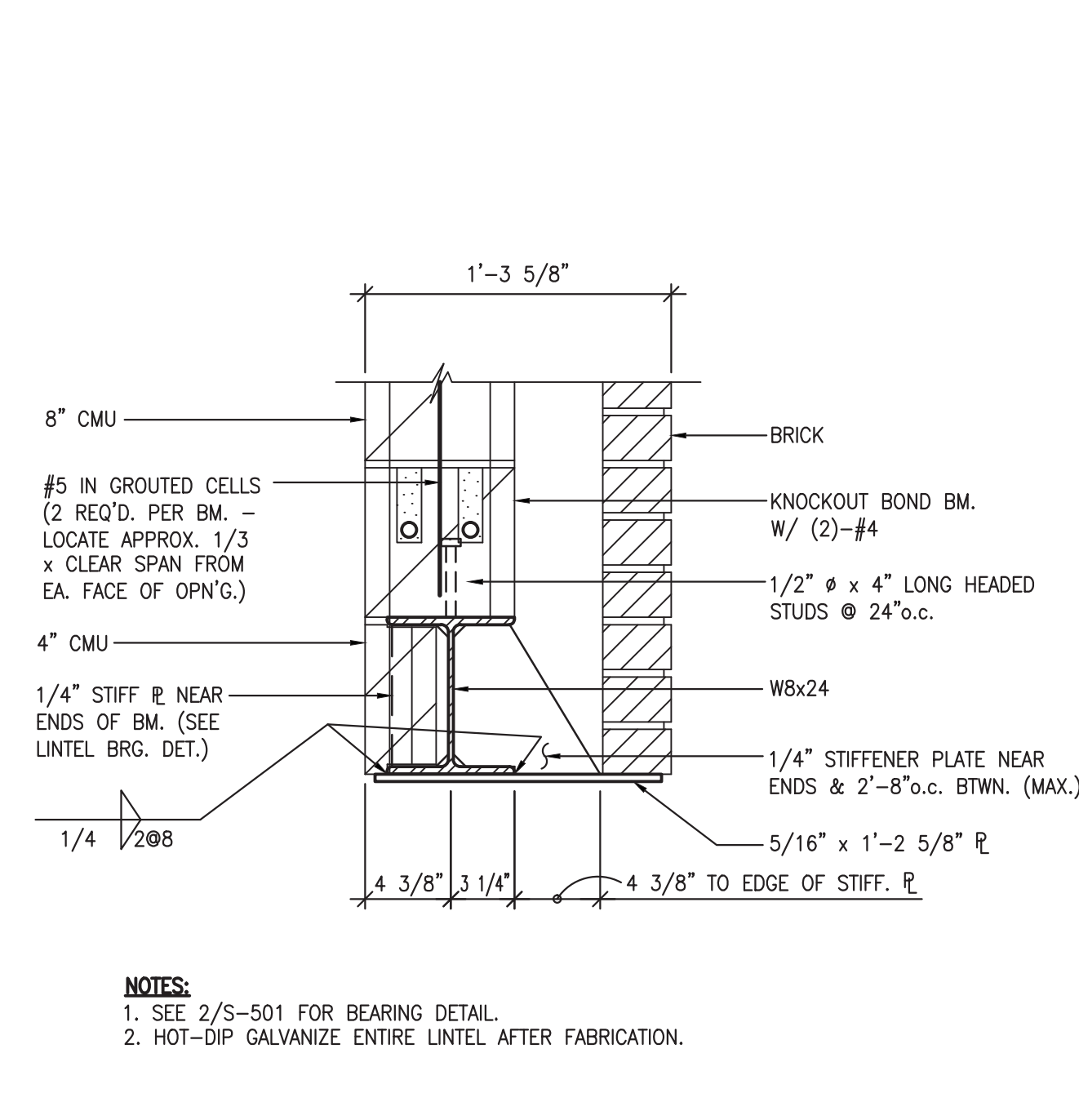
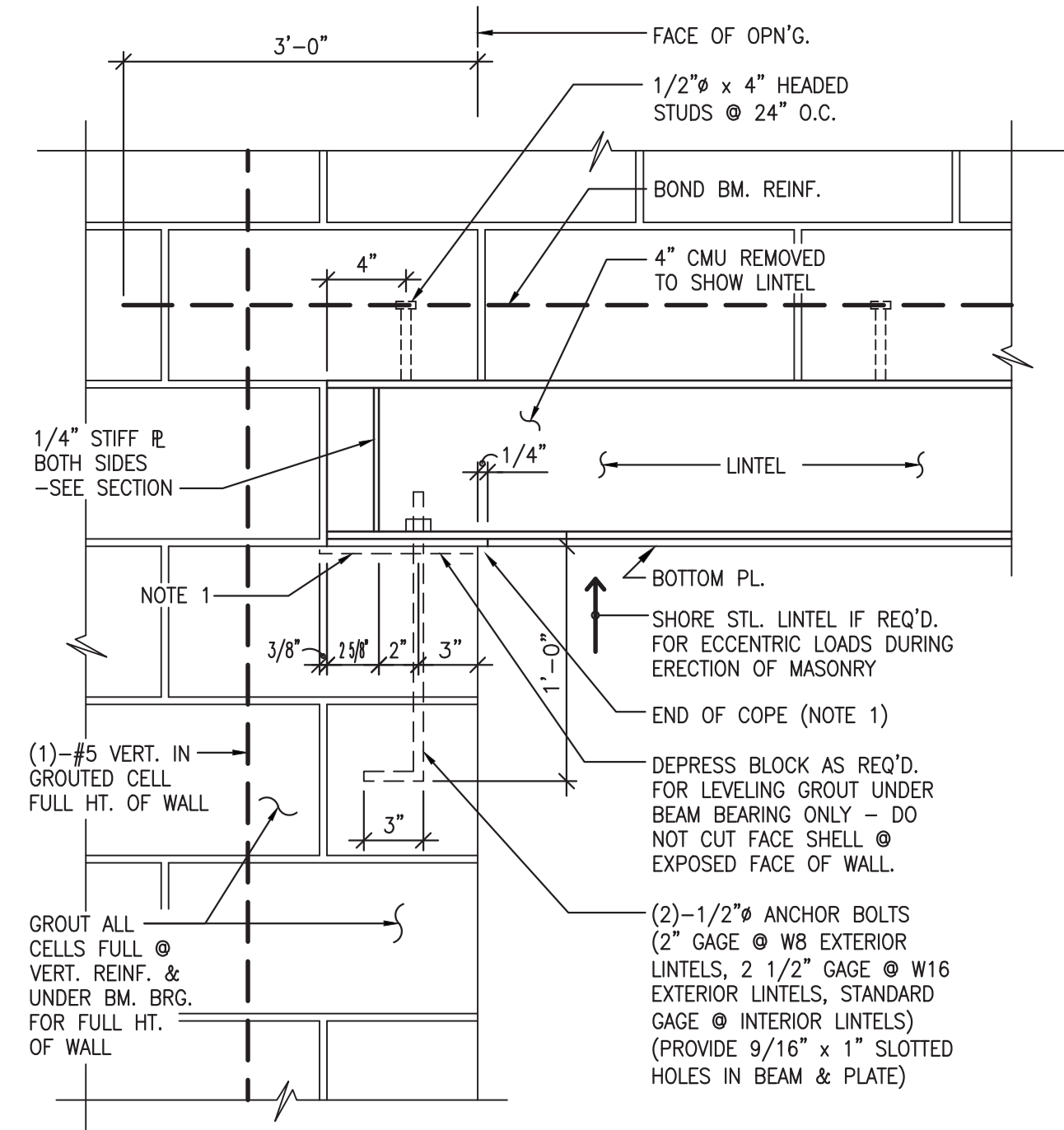


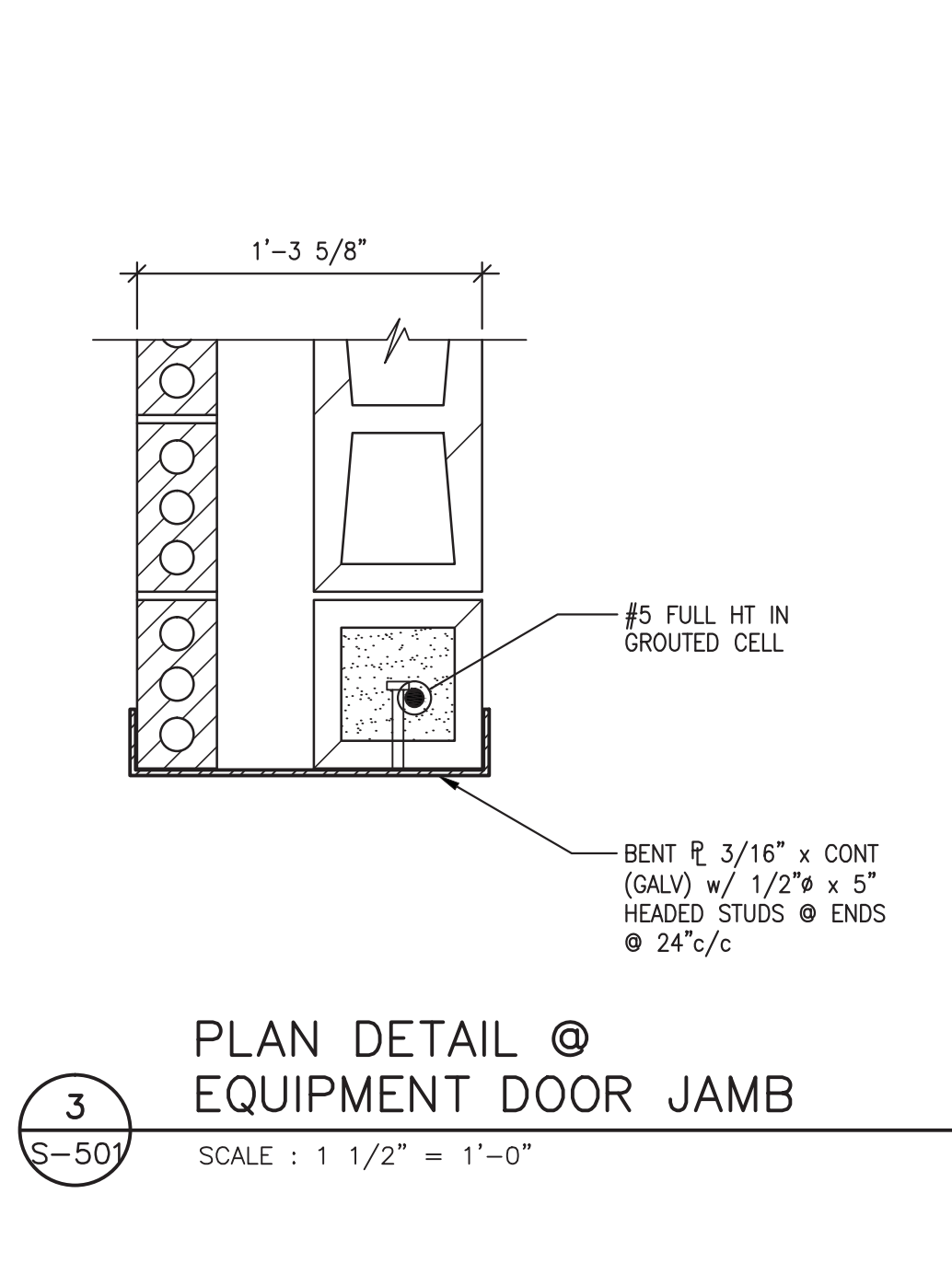
12-095 KHA Des Moines VA Addition\Struct\12-095\_S-501.dwg 5-28-14 09:31:05 AM Tosh  
12-095  
VA FORM 08-6231



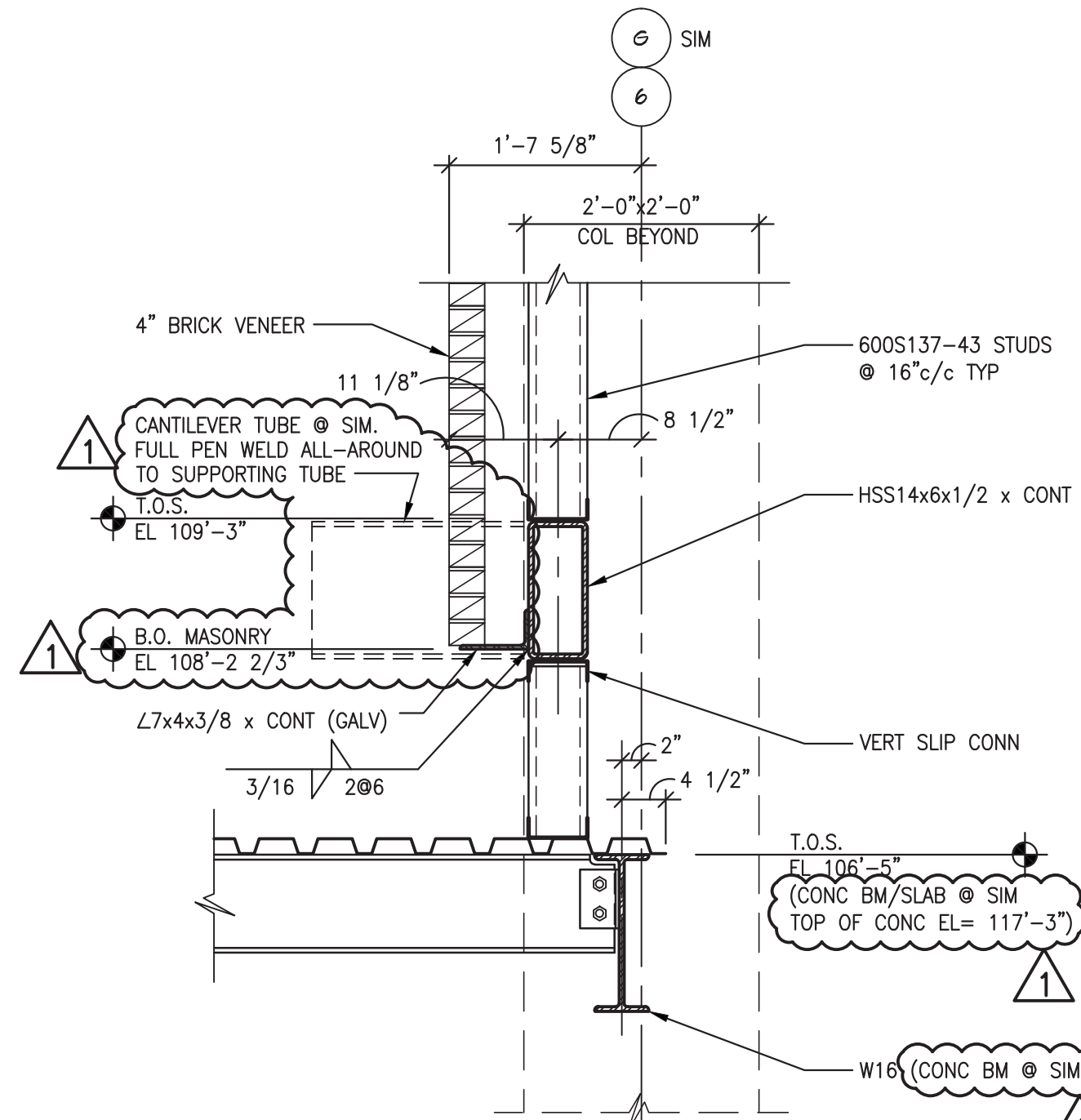
1 LINTEL DETAIL  
S-501 SCALE : 1 1/2" = 1'-0"



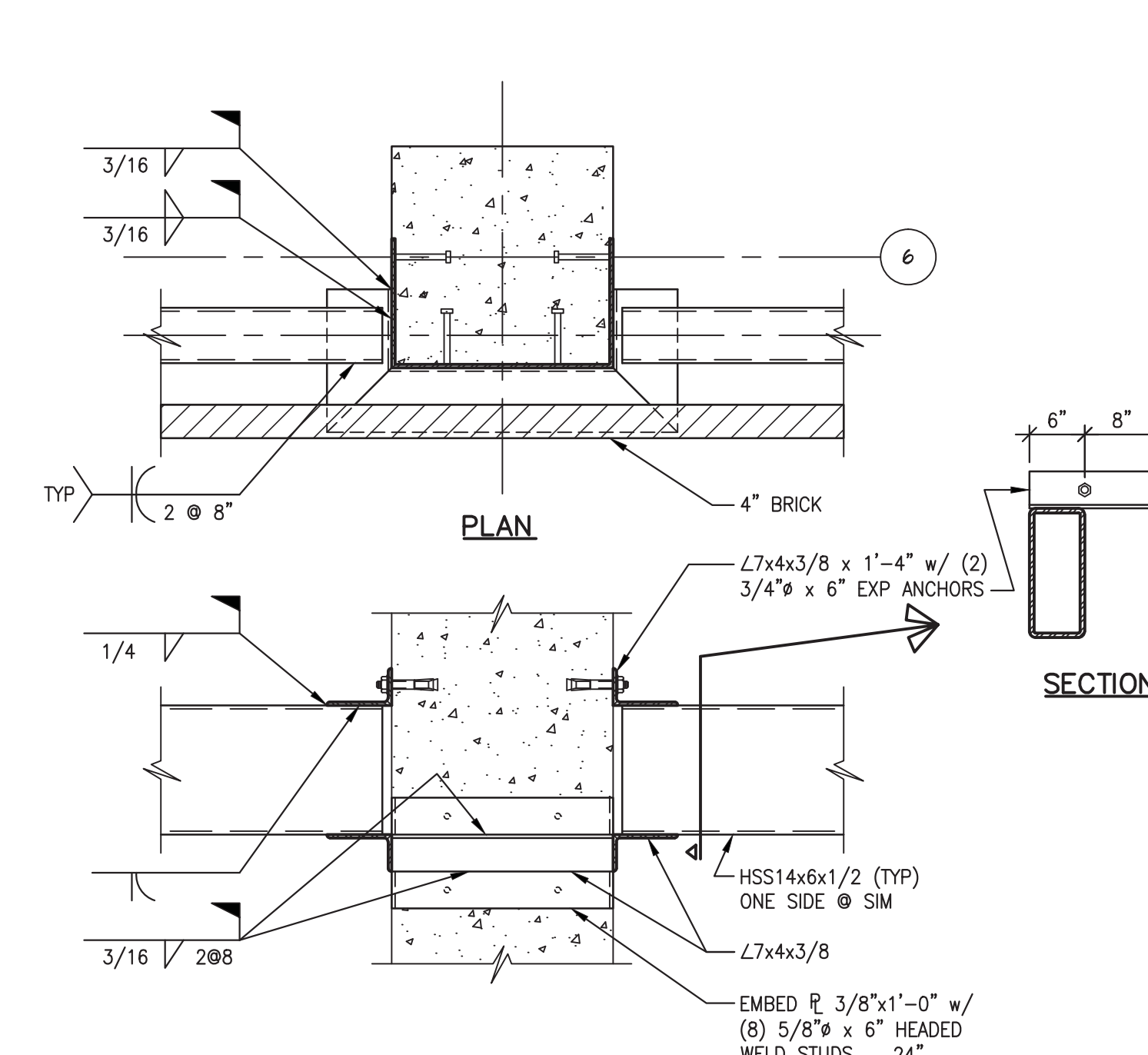
2 TYP. LINTEL BRG. DETAIL  
S-501 SCALE : 1 1/2" = 1'-0"



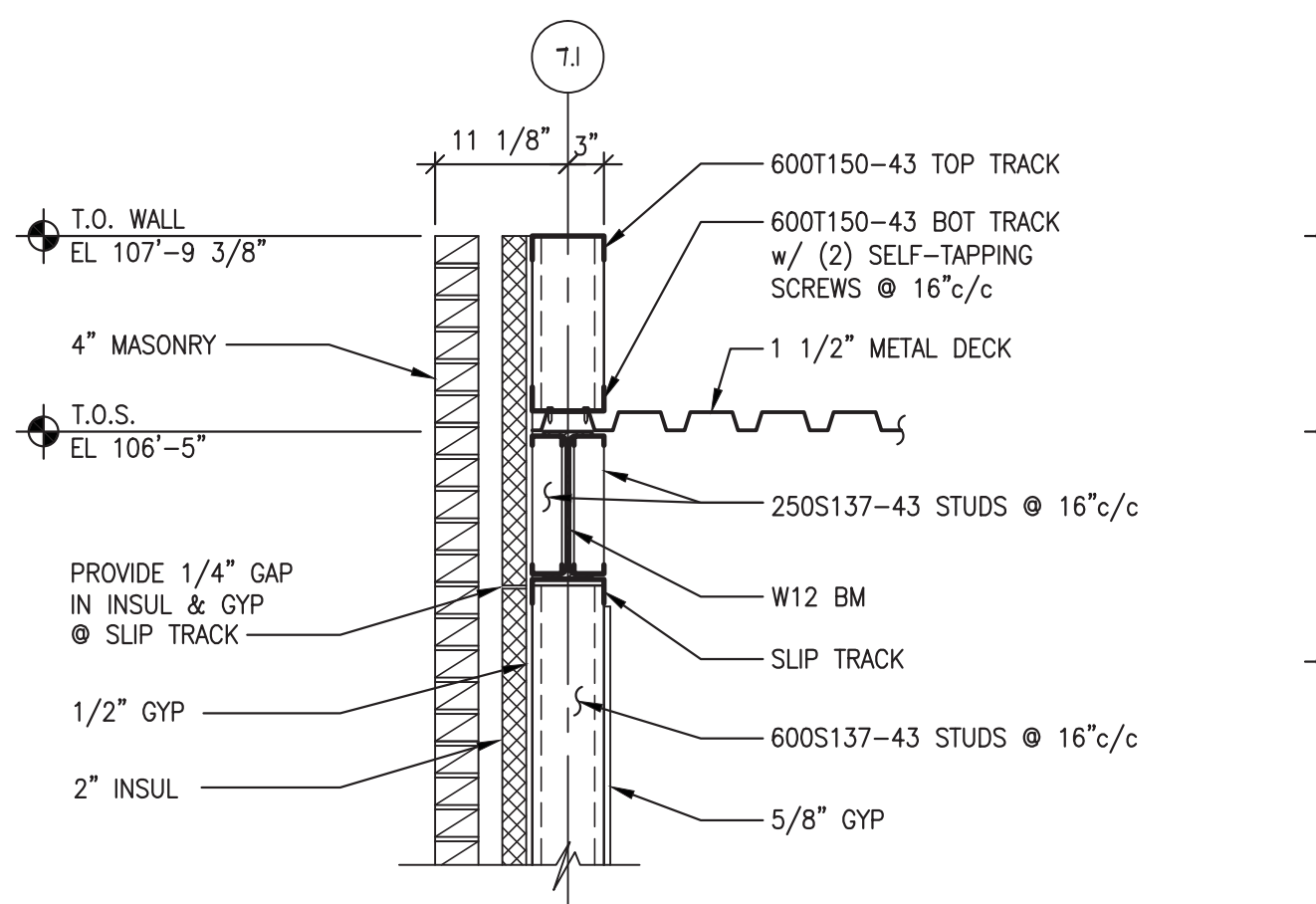
3 PLAN DETAIL @ EQUIPMENT DOOR JAMB  
S-501 SCALE : 1 1/2" = 1'-0"



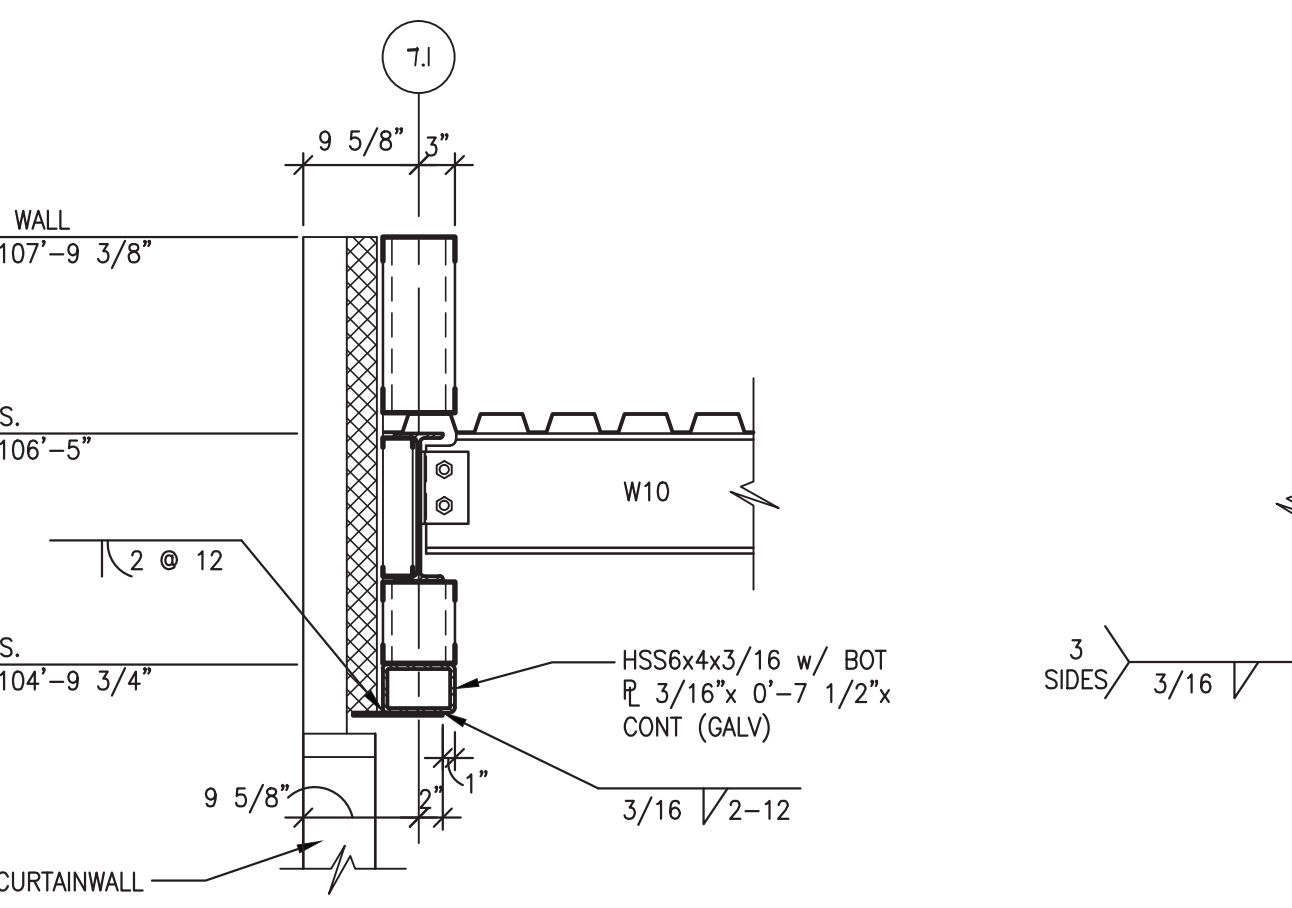
4 WALL FRAMING DETAIL  
S-501 SCALE : 3/4" = 1'-0"



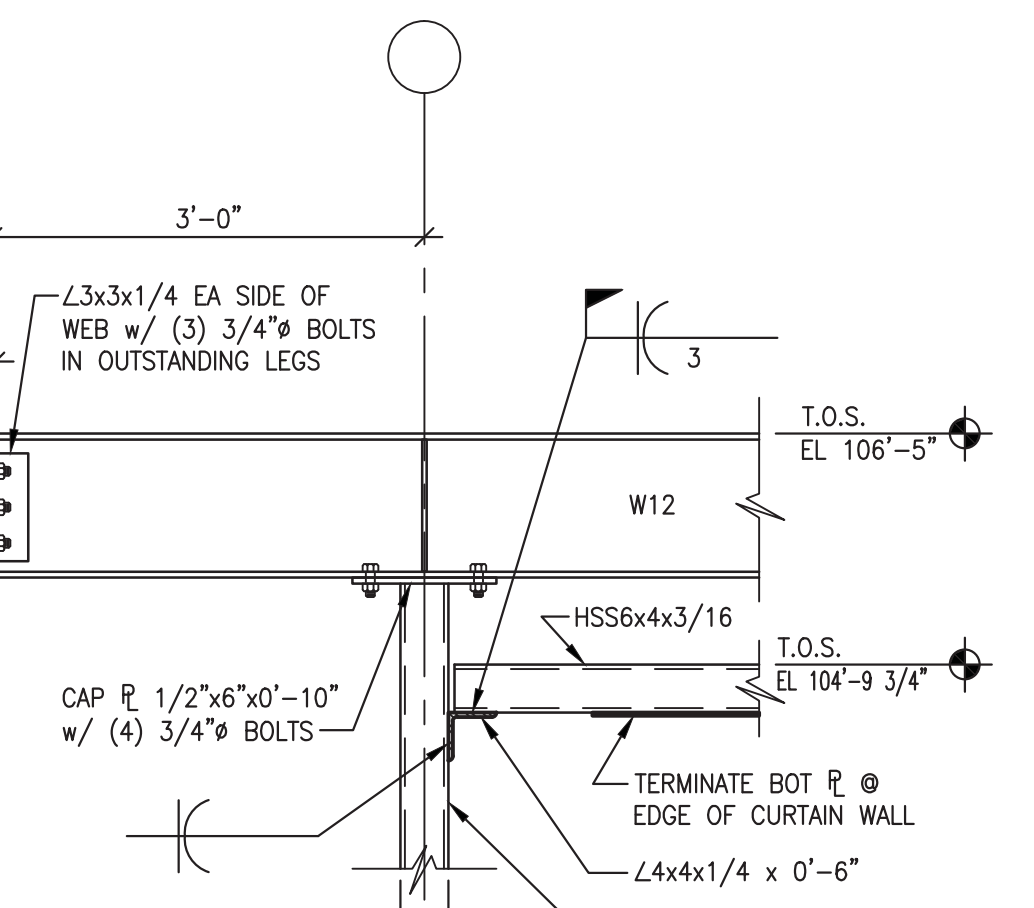
5 STEEL CONNECTION DETAIL  
S-501 SCALE : 3/4" = 1'-0"



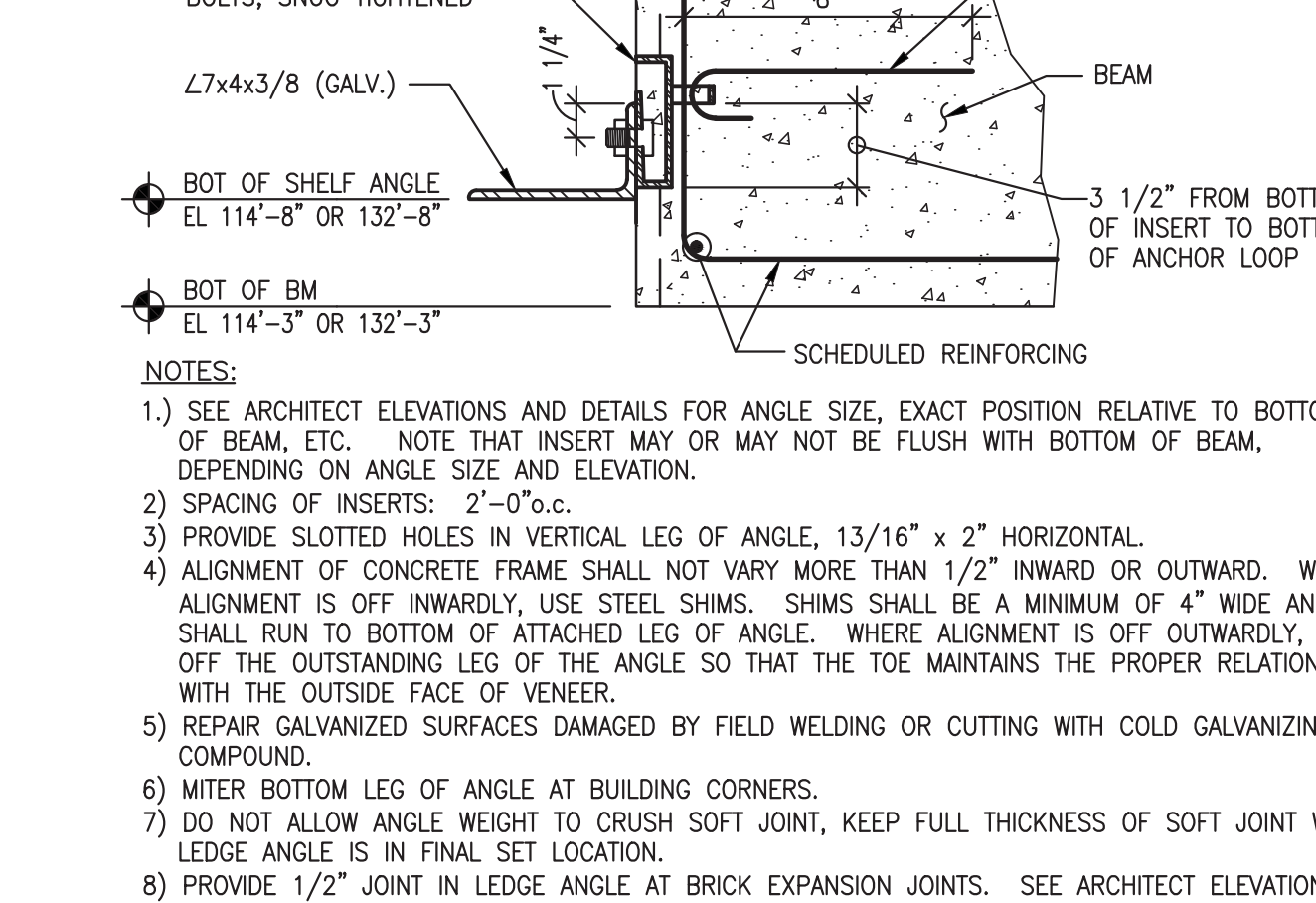
6 WALL FRAMING DETAIL  
S-501 SCALE : 3/4" = 1'-0"



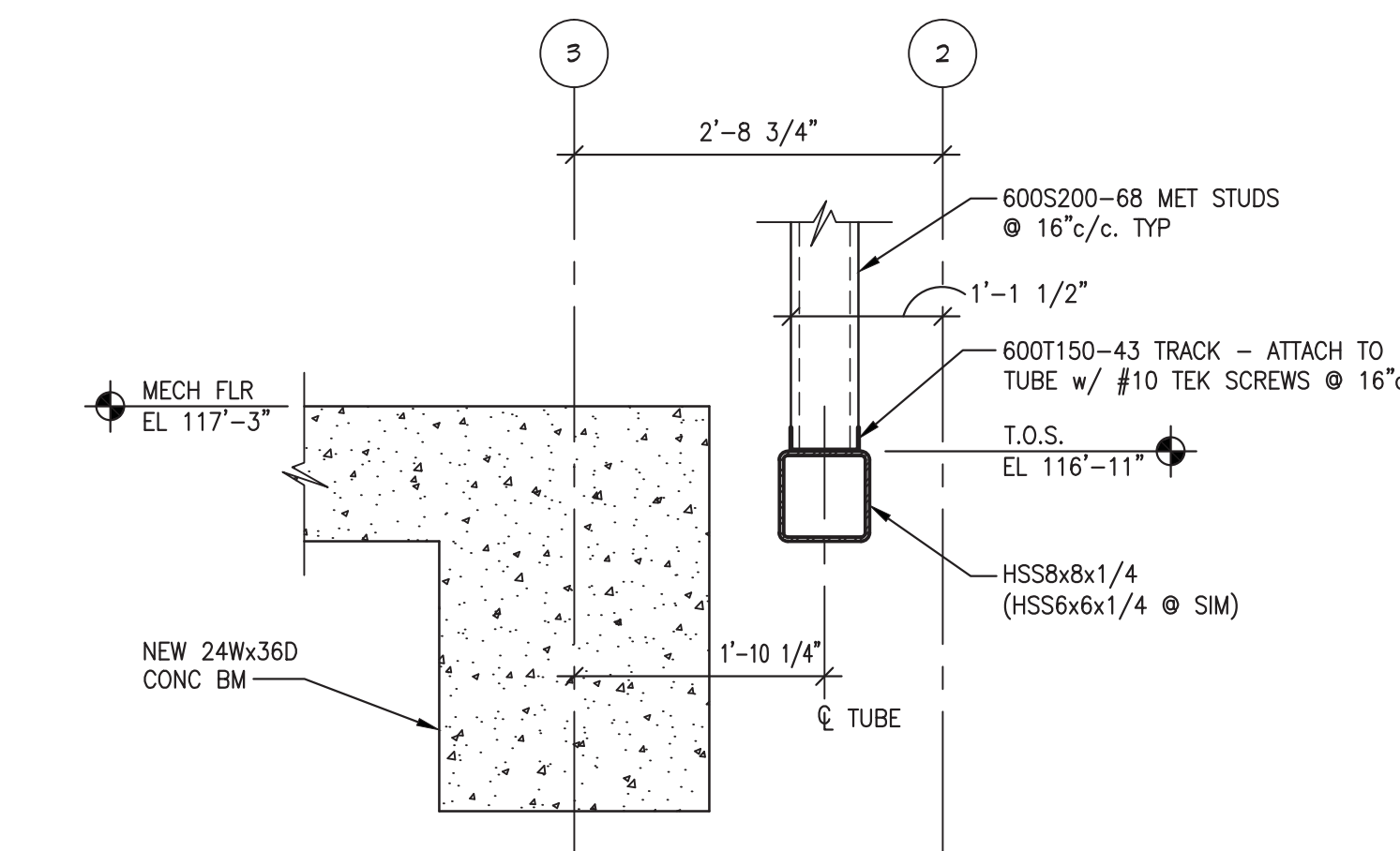
7 ROOF/WALL FRAMING DETAIL  
S-501 SCALE : 3/4" = 1'-0"



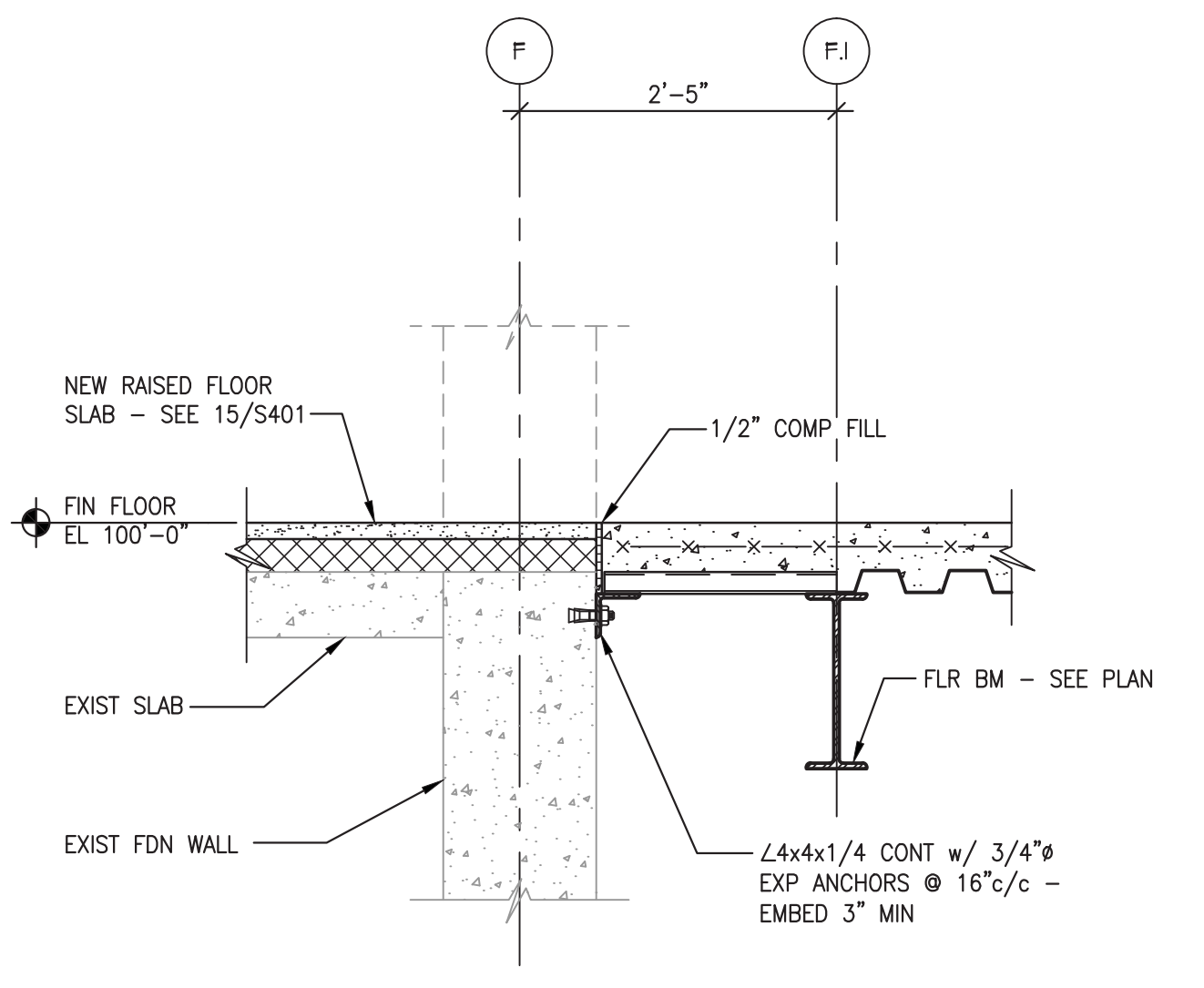
8 FRAMING DETAIL  
S-501 SCALE : 3/4" = 1'-0"



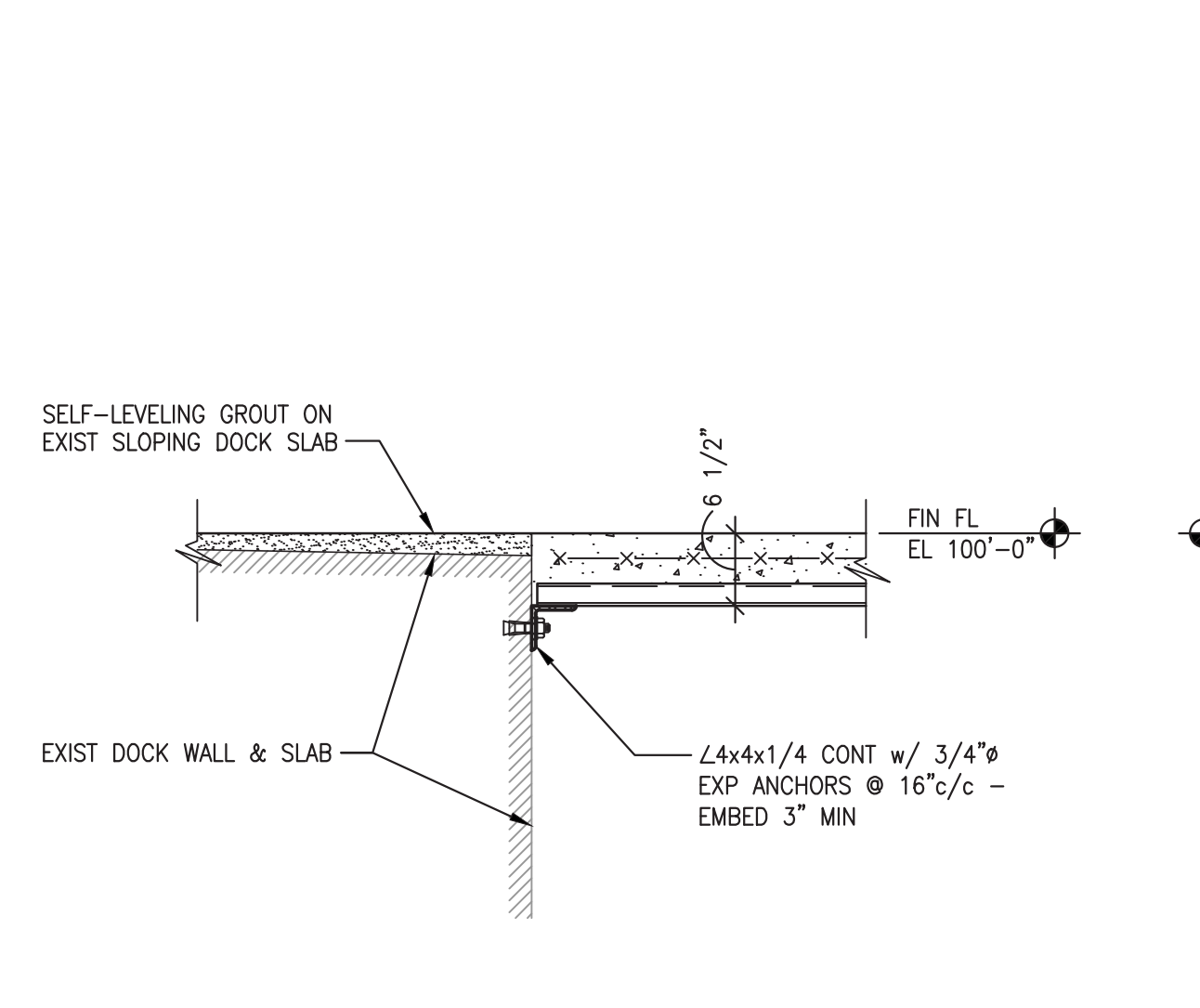
9 TYPICAL LEDGE ANGLE DETAIL  
S-501 SCALE : 3/4" = 1'-0"



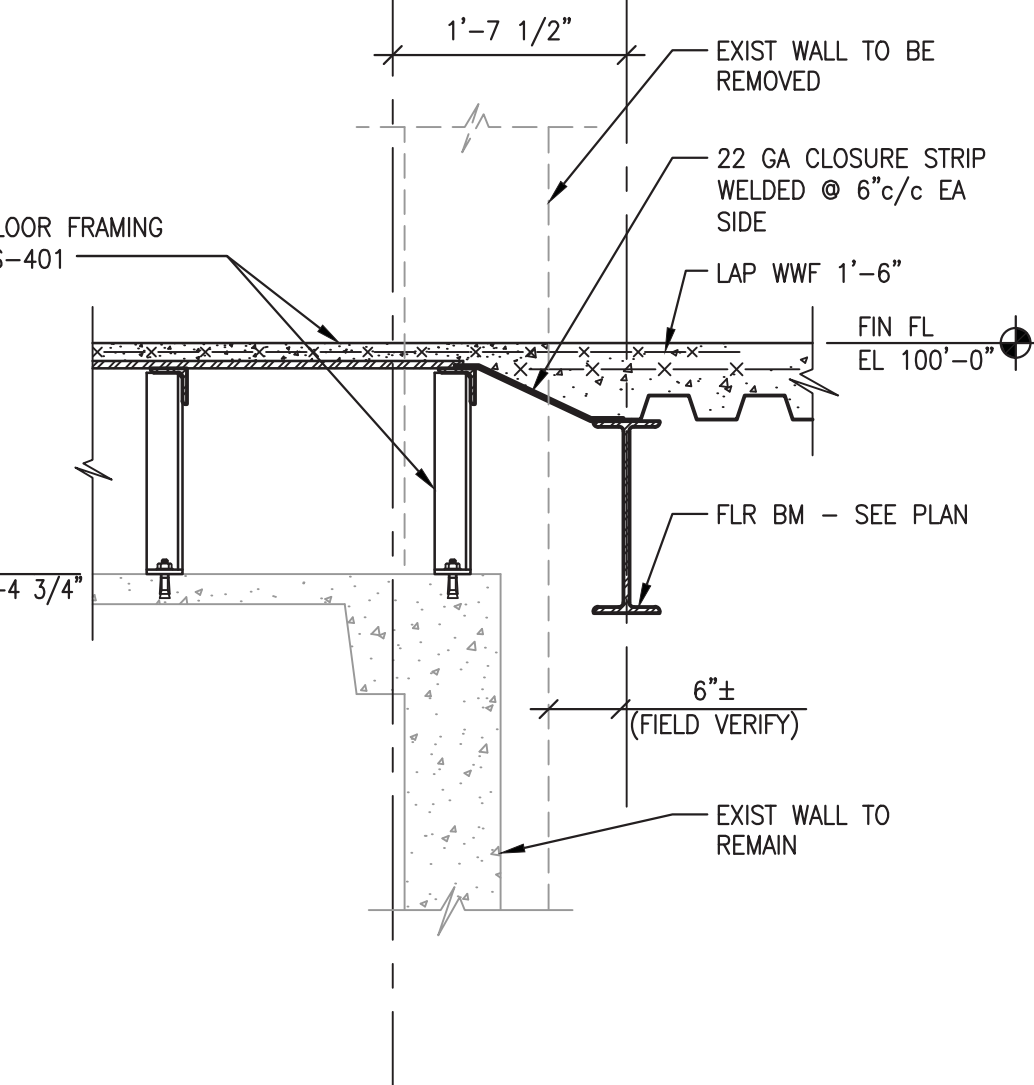
10 WALL FRAMING DETAIL  
S-501 SCALE : 3/4" = 1'-0"



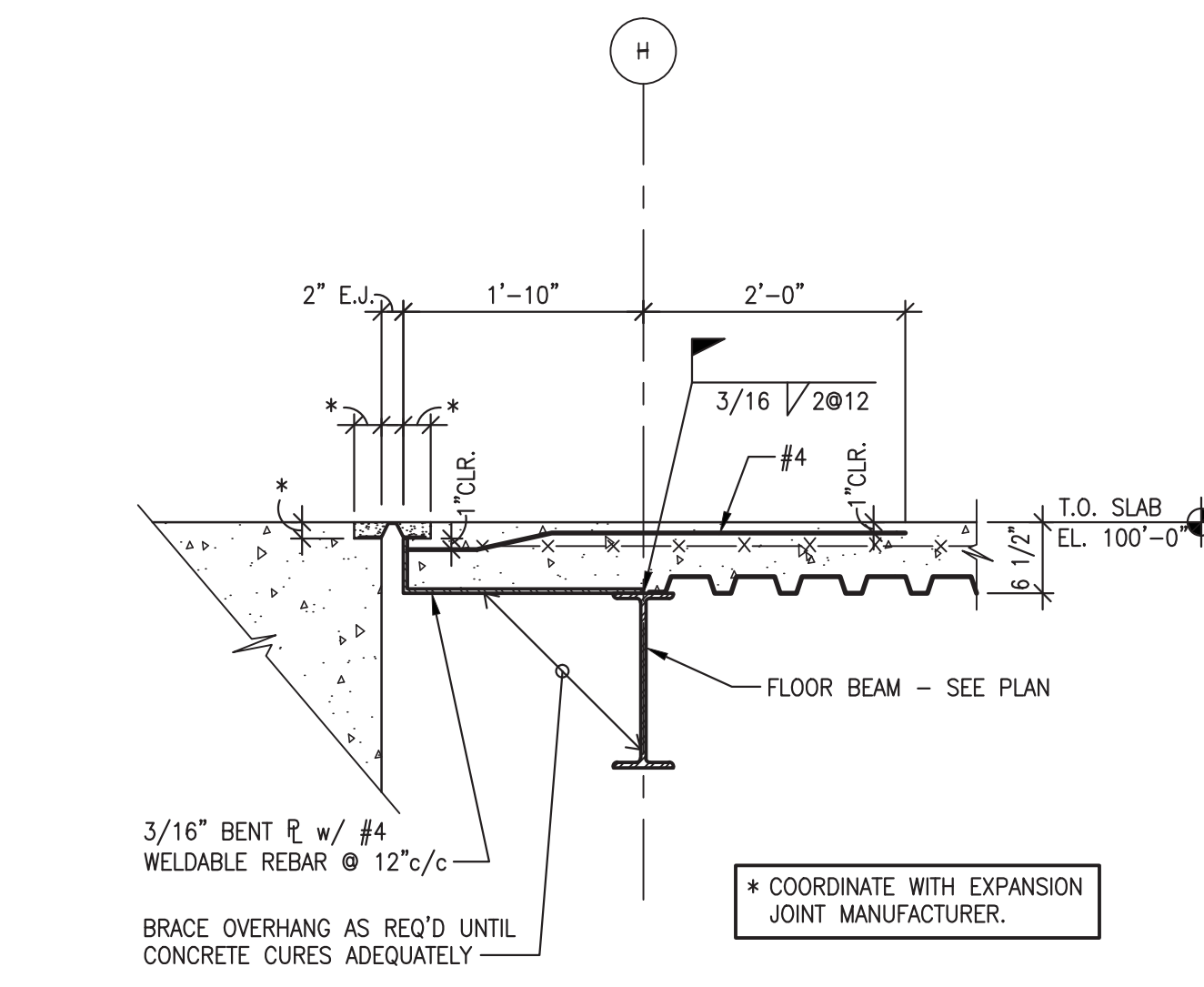
11 FRAMING DETAIL  
S-501 SCALE : 3/4" = 1'-0"



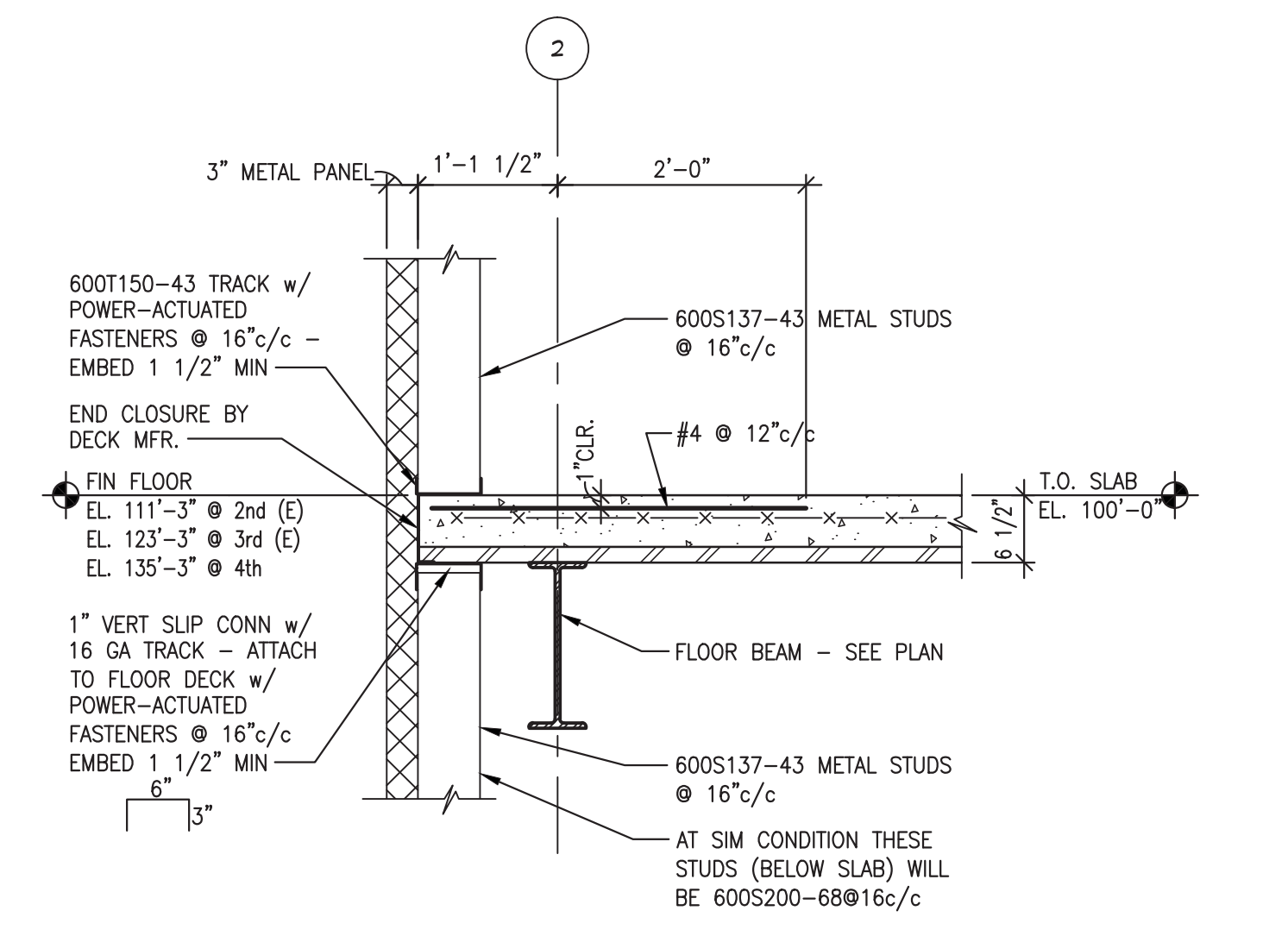
12 FRAMING DETAIL  
S-501 SCALE : 3/4" = 1'-0"



13 FRAMING DETAIL  
S-501 SCALE : 3/4" = 1'-0"



14 FRAMING DETAIL  
S-501 SCALE : 3/4" = 1'-0"



15 FRAMING DETAIL  
S-501 SCALE : 3/4" = 1'-0"

CONSULTANTS:

NIELSEN - BAUMERT ENGINEERING INC.  
9802 NICHOLAS STREET, SUITE 105 Omaha, NE 68114  
(402) 496-4750 FAX (402) 496-1147

ARCHITECT/ENGINEERS:

**KHA**  
Kenneth Hahn Architects

1343 South 75th Street | Omaha, NE 68124-1610 | 402.391.2111 | www.kharch.com

Drawing Title

FRAMING DETAILS

Approved Project Director

AE Project #  
171-001

Project Title  
BUILD SUPPLY, PROCESSING  
AND DISTRIBUTION

Location

VAMC DES MOINES

Date  
13 FEBRUARY 2014

Checked

KPK

Drawn

Tosh/JLM

Project Number

636-121

Building Number

BUILDING 1W

Drawing Number

S-501

Dwg. 92 of 235

Office of  
Construction  
and Facilities  
Management

Department of  
Veterans Affairs